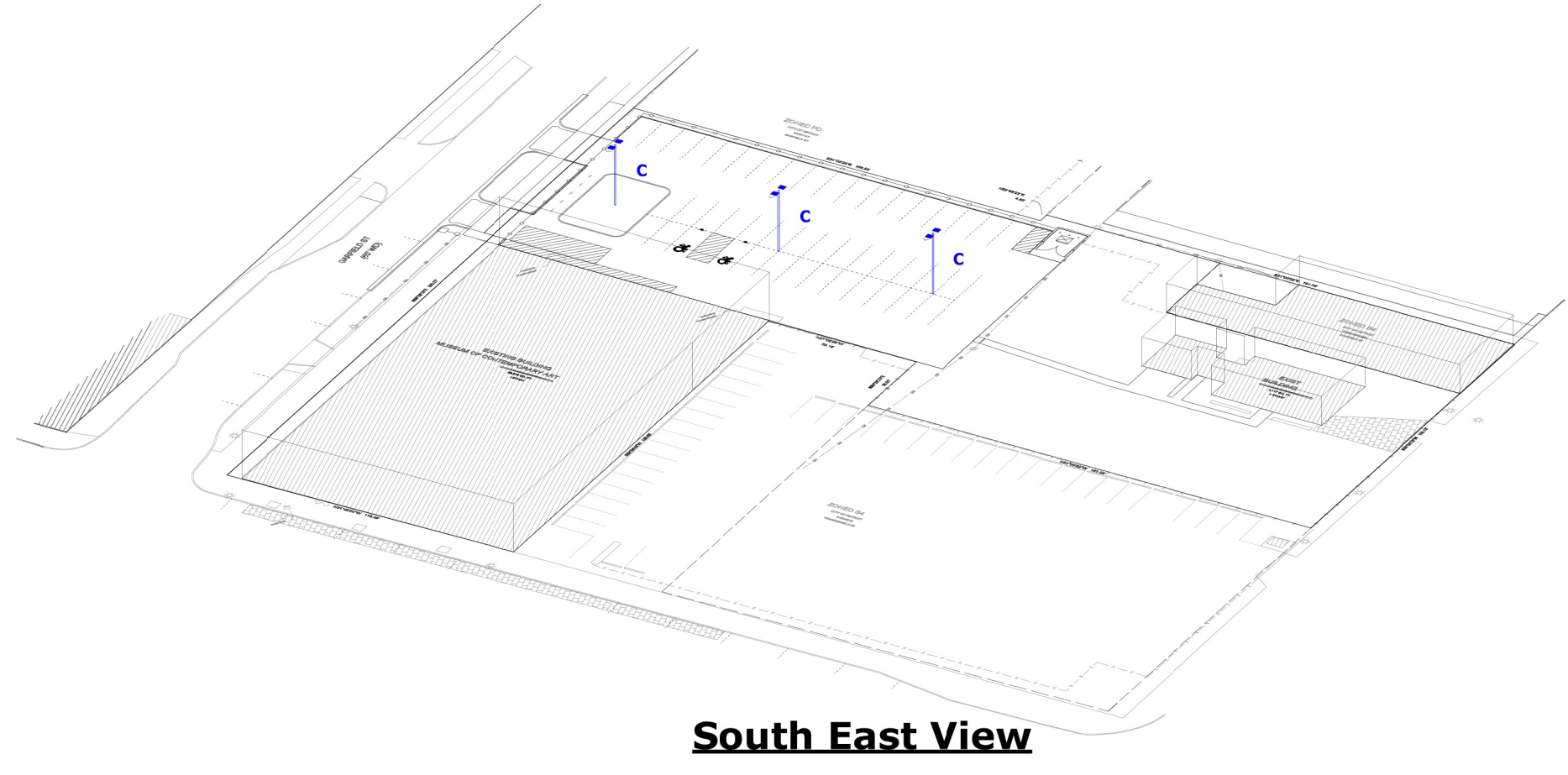


Plan View
Scale - 1" = 20ft



South East View

D-Series Size 1 LED Area Luminaire

Specifications

- ETC: 0.25 ft
- Length: 22.1"
- Width: 14.2"
- Height H1: 7.88"
- Height H2: 2.22"
- Weight: 24 lbs

Ordering Information

EXAMPLE: DSX1 LED P7 40K 70CRI T3M MVOLT SPA NLTARD PIRNH DDBXD

Code	Label	Description	Quantity	Manufacturer	Part Number	Notes
DSX1	DSX1 LED P7 40K 70CRI T3M MVOLT SPA NLTARD PIRNH DDBXD	D-Series Size 1 LED Area Luminaire	1	Lithonia Lighting	DSX1 LED P7 40K 70CRI T3M MVOLT SPA NLTARD PIRNH DDBXD	

Statistics

Description	Symbol	Avg	Max	Min	Max/Min	Avg/Min
Overall	+	1.0 fc	4.0 fc	0.0 fc	N/A	N/A
Parking and Drive Lanes	X	2.0 fc	4.0 fc	0.7 fc	5.7:1	2.9:1
Property Line	+	0.2 fc	1.1 fc	0.0 fc	N/A	N/A

Schedule

Symbol	Label	QTY	Manufacturer	Catalog Number	Description	Lumens per Lamp	LLF	Wattage	Mounting Height
C	C	3	Lithonia Lighting	[...]	[...]	[...]	0.9	169.96	
C			Lithonia Lighting	DSX1 LED P3 40K 80CRI T4M	D-Series Size 1 Area Luminaire P3 Performance Package 4000K CCT 80 CRI Type 4 Medium	12817	0.9	102.17	25'0"
C			Lithonia Lighting	DSX1 LED P2 40K 80CRI T2M	D-Series Size 1 Area Luminaire P2 Performance Package 4000K CCT 80 CRI Type 2 Medium	8855	0.9	67.79	25'0"

- General Note**
- SEE SCHEDULE FOR LUMINAIRE MOUNTING HEIGHT
 - SEE LUMINAIRE SCHEDULE FOR LIGHT LOSS FACTOR.
 - CALCULATIONS ARE SHOWN IN FOOTCANDLES AT: 0' - 0"

THE ENGINEER AND/OR ARCHITECT MUST DETERMINE APPLICABILITY OF THE LAYOUT TO EXISTING / FUTURE FIELD CONDITIONS. THIS LIGHTING LAYOUT REPRESENTS ILLUMINATION LEVELS CALCULATED FROM LABORATORY DATA TAKEN UNDER CONTROLLED CONDITIONS IN ACCORDANCE WITH ILLUMINATING ENGINEERING SOCIETY APPROVED METHODS. ACTUAL PERFORMANCE OF ANY MANUFACTURER'S LUMINAIRE MAY VARY DUE TO VARIATION IN ELECTRICAL VOLTAGE, TOLERANCE IN LAMPS, AND OTHER VARIABLE FIELD CONDITIONS. MOUNTING HEIGHTS INDICATED ARE FROM GRADE AND/OR FLOOR UP.

THESE LIGHTING CALCULATIONS ARE NOT A SUBSTITUTE FOR INDEPENDENT ENGINEERING ANALYSIS OF LIGHTING SYSTEM SUITABILITY AND SAFETY. THE ENGINEER AND/OR ARCHITECT IS RESPONSIBLE TO REVIEW FOR MICHIGAN ENERGY CODE AND LIGHTING QUALITY COMPLIANCE.

UNLESS EXEMPT, PROJECT MUST COMPLY WITH LIGHTING CONTROLS REQUIREMENTS DEFINED IN ASHRAE 90.1 2019. FOR SPECIFIC INFORMATION CONTACT GBA CONTROLS GROUP AT CONTROLS@GASSERBUSH.COM OR 734-266-6705.

Alternates Note
THE USE OF FIXTURE ALTERNATES MUST BE RESUBMITTED TO THE CITY FOR APPROVAL.

Ordering Note
FOR INQUIRIES CONTACT GASSER BUSH AT QUOTES@GASSERBUSH.COM OR 734-266-6705.

Drawing Note
THIS DRAWING WAS GENERATED FROM AN ELECTRONIC IMAGE FOR ESTIMATION PURPOSE ONLY. LAYOUT TO BE VERIFIED IN FIELD BY OTHERS.

Mounting Height Note
MOUNTING HEIGHT IS MEASURED FROM GRADE TO FACE OF FIXTURE. POLE HEIGHT SHOULD BE CALCULATED AS THE MOUNTING HEIGHT LESS BASE HEIGHT.

PARKING LOT LIGHTING REPLACEMENT - DETROIT
 PHOTOMETRIC PLAN
 GASSER BUSH ASSOCIATES
 WWW.GASSERBUSH.COM

Designer
 KS
 Date
 04/17/2026
 Scale
 Not to Scale
 Drawing No.
 QC V2