

April 20, 2026

From: Jessica Quijano, AIA

To: Detroit Historic District Commission

RE: Ste. Anne de Detroit: Exterior Restoration and Rehabilitation
1000 St Anne St
Detroit, MI 48216
Local Historic District: Ste. Anne's Parish Complex

Subject: HDC Application for Ste. Anne de Detroit: Exterior Restoration - Request for COA revision, Historic Wood Windows, Replacement Windows, and Basement Masonry Openings

ADDITIONAL PHOTOGRAPHS OF EXISTING WINDOW CONDITIONS AT WINDOWS PROPOSED FOR REPLACEMENT:

Basilica (sacristy):

Three historic wood double-hung windows (#203, #204, and #205) at 2nd floor, west elevation. Custom in-kind wood windows proposed for replacement.

WINDOW #203 exterior elevation and detail views:

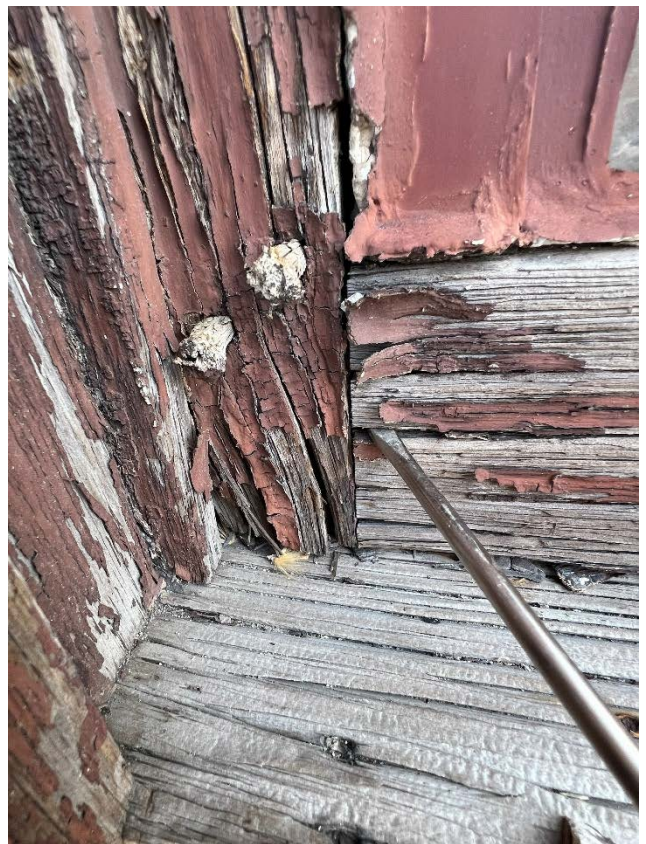
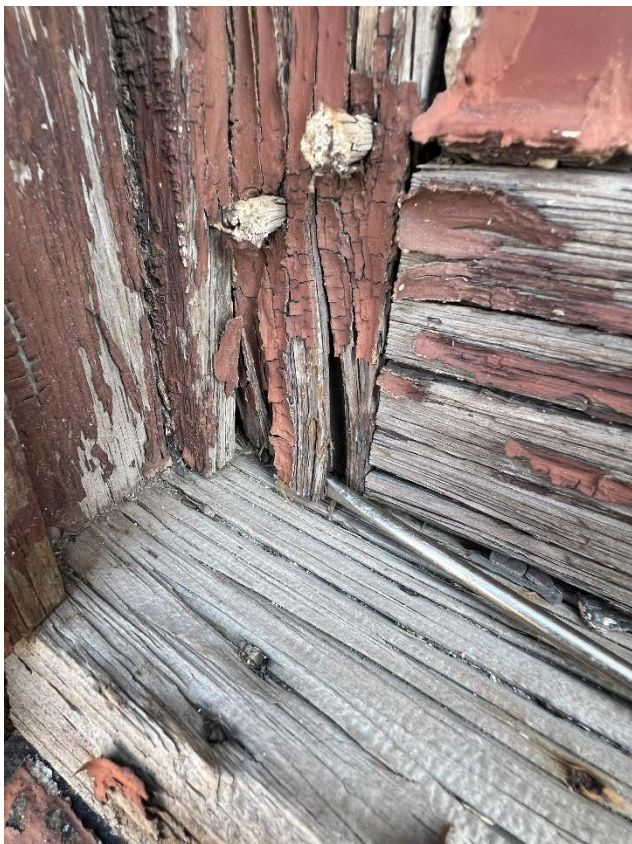
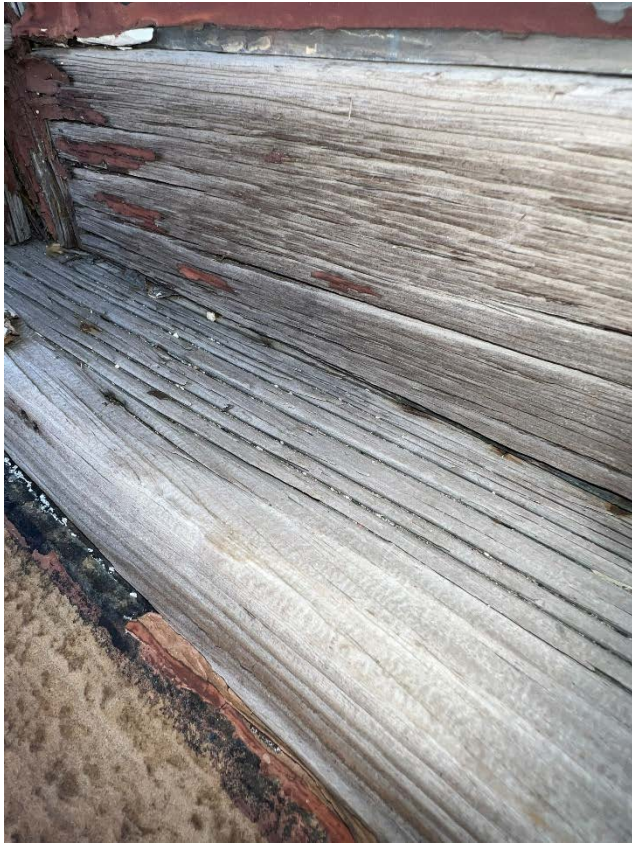


Ste. Anne de Detroit

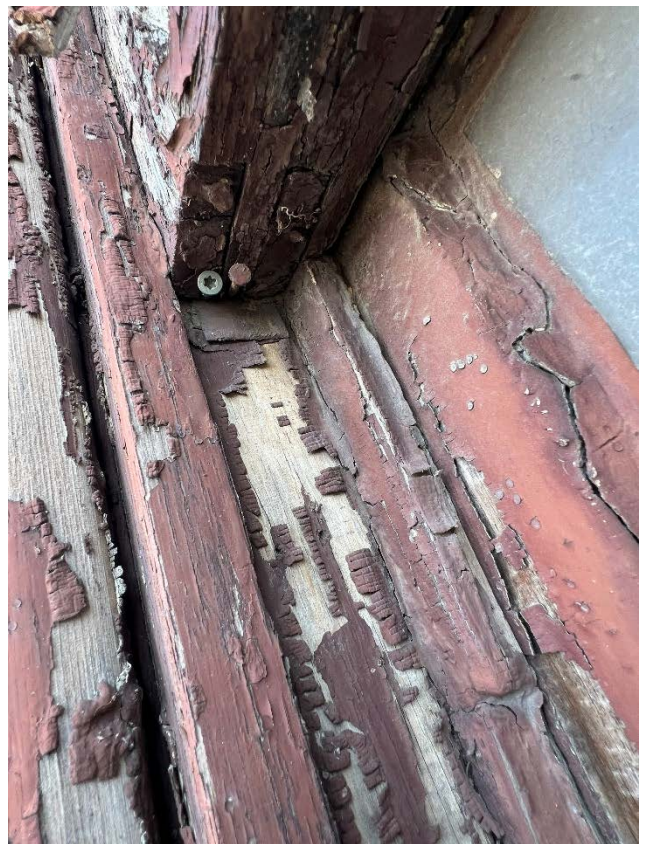
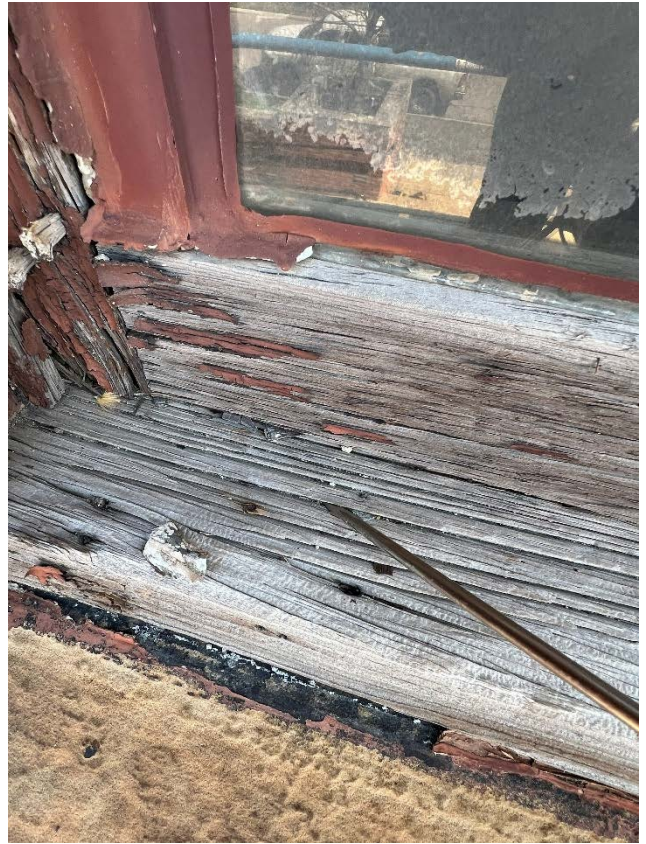
HDC App. for Ext. Restoration: Addl. photos of exist. window conditions at windows proposed for replacement

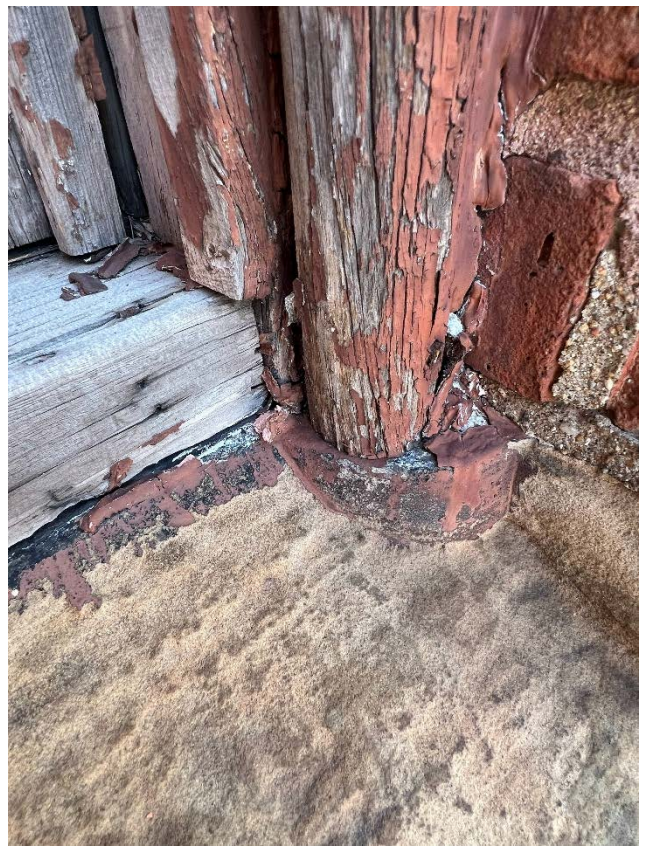
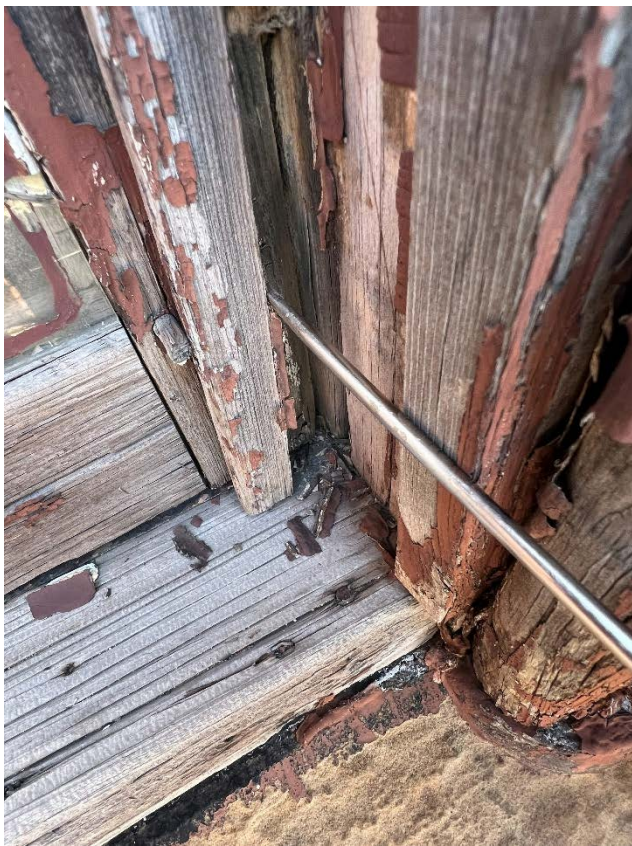
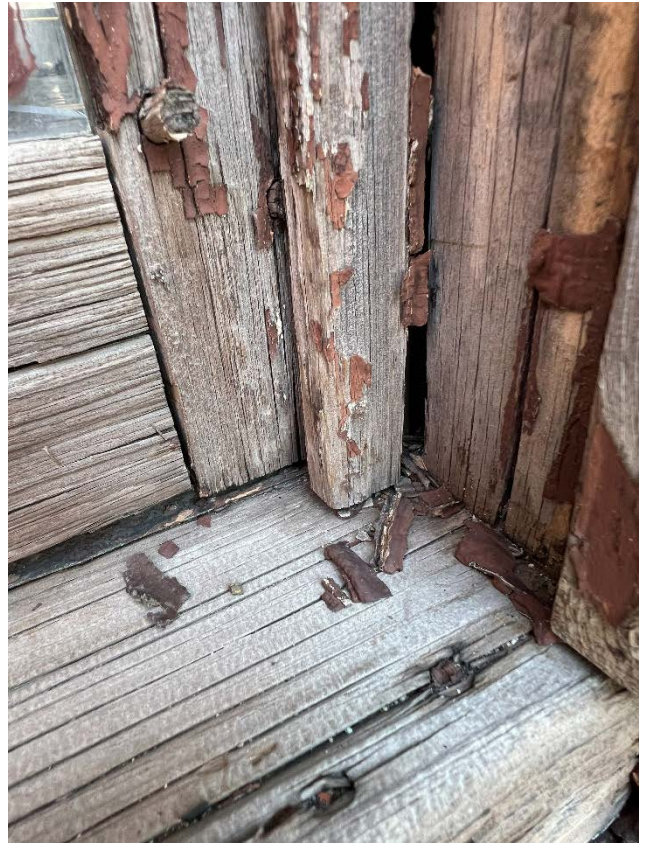
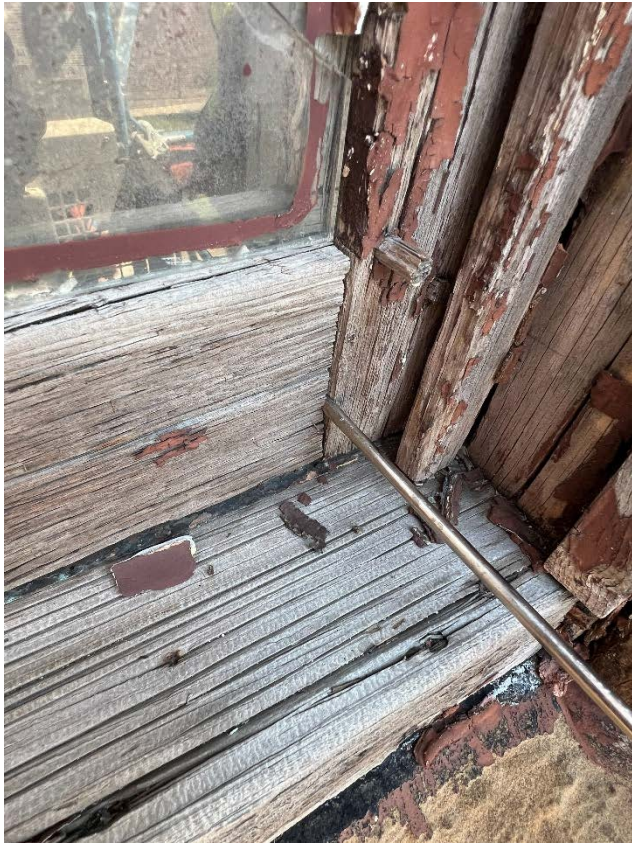
April 20, 2026

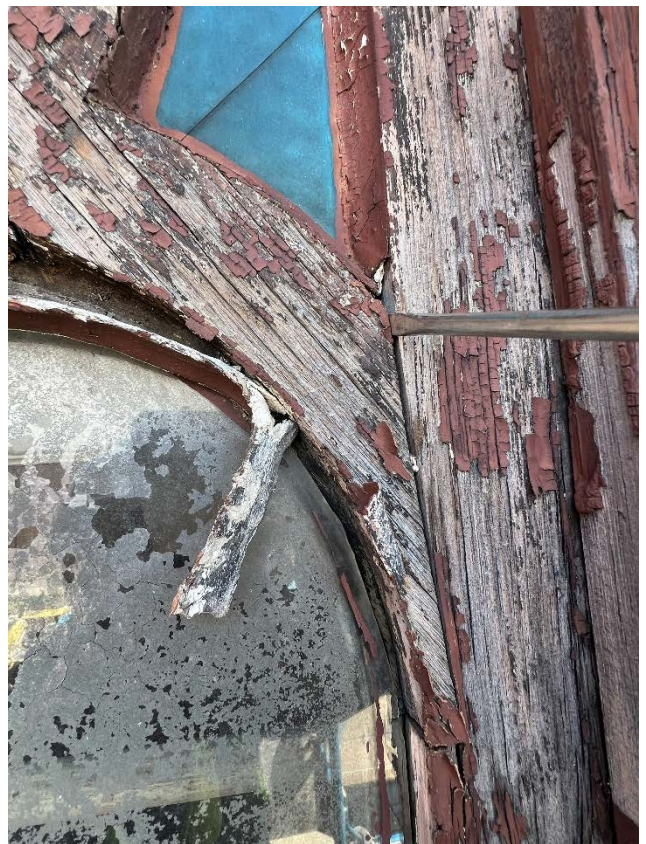
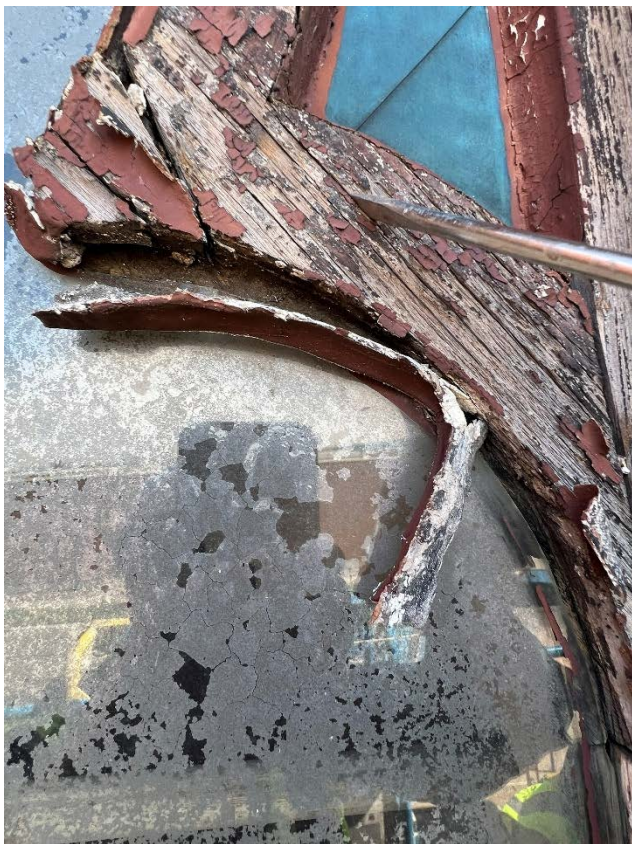
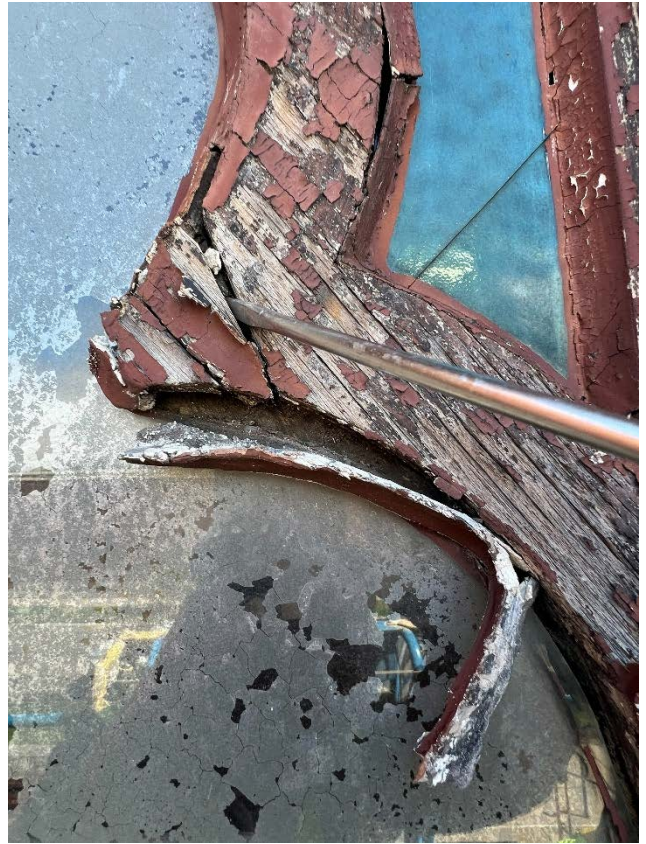
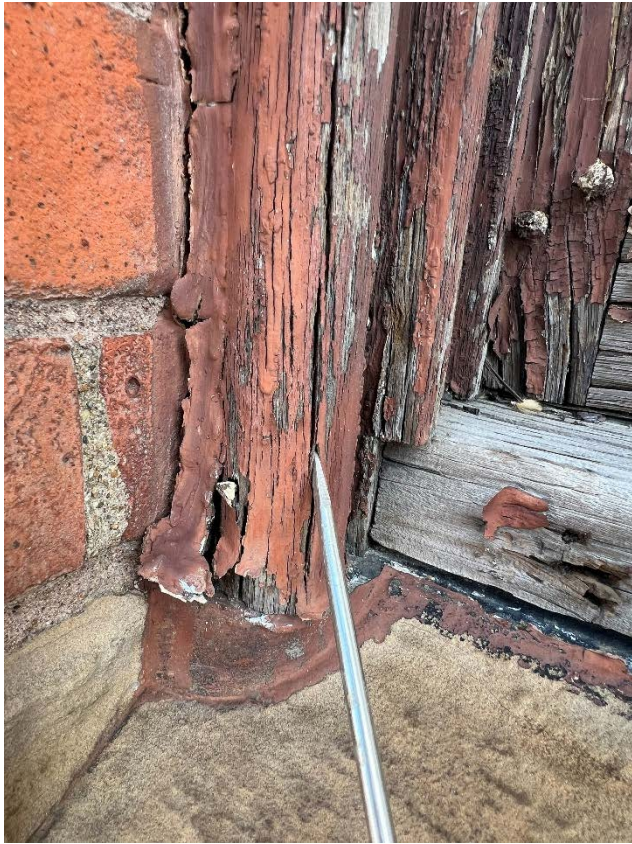
2

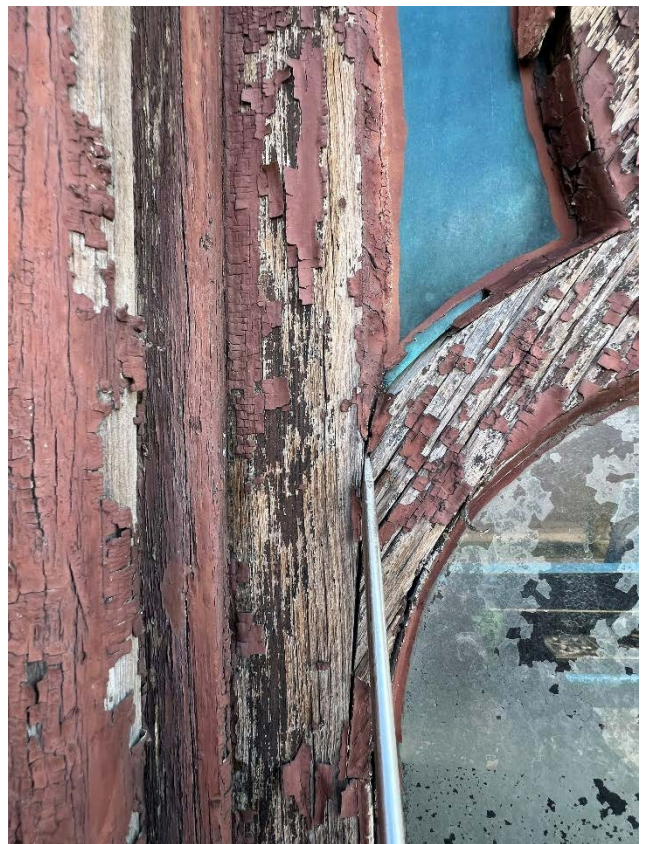
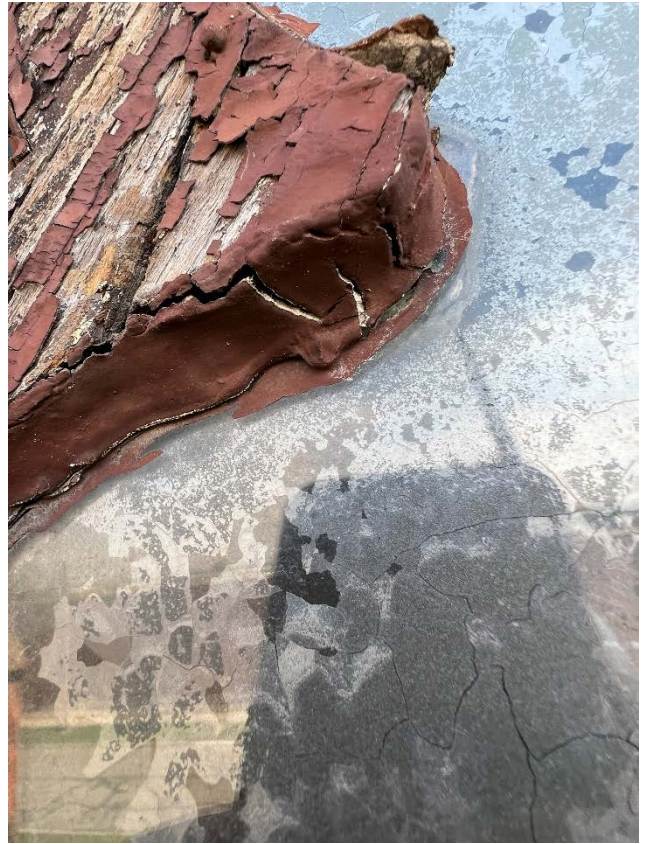
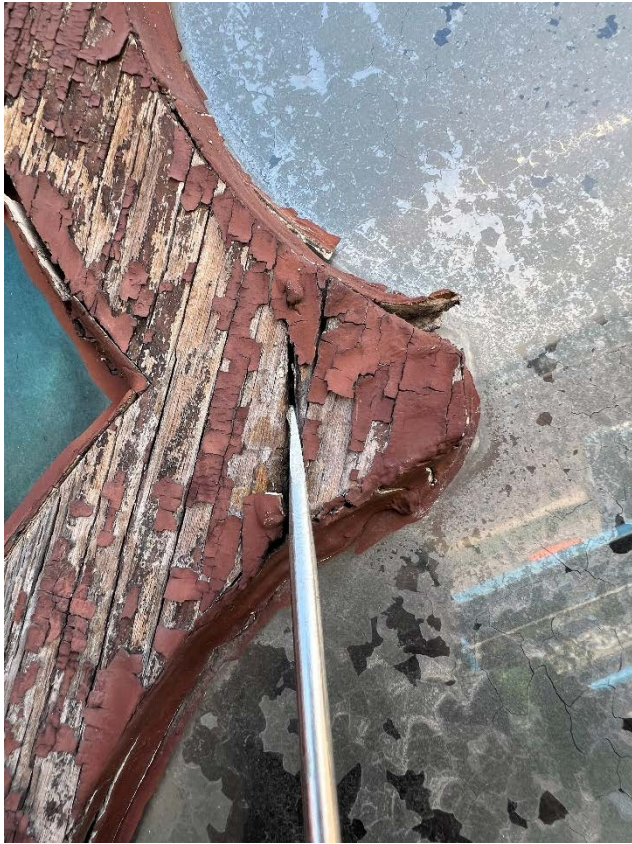


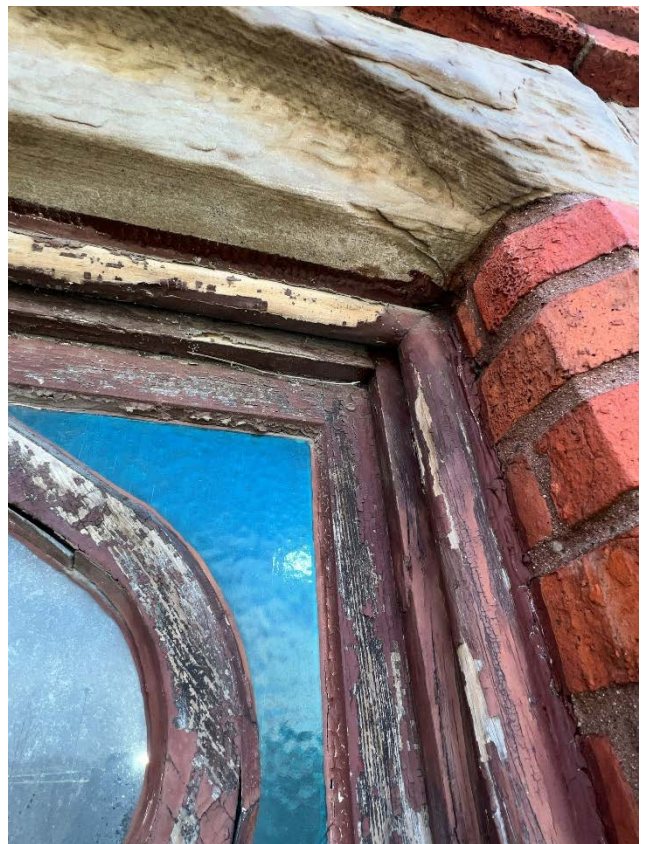
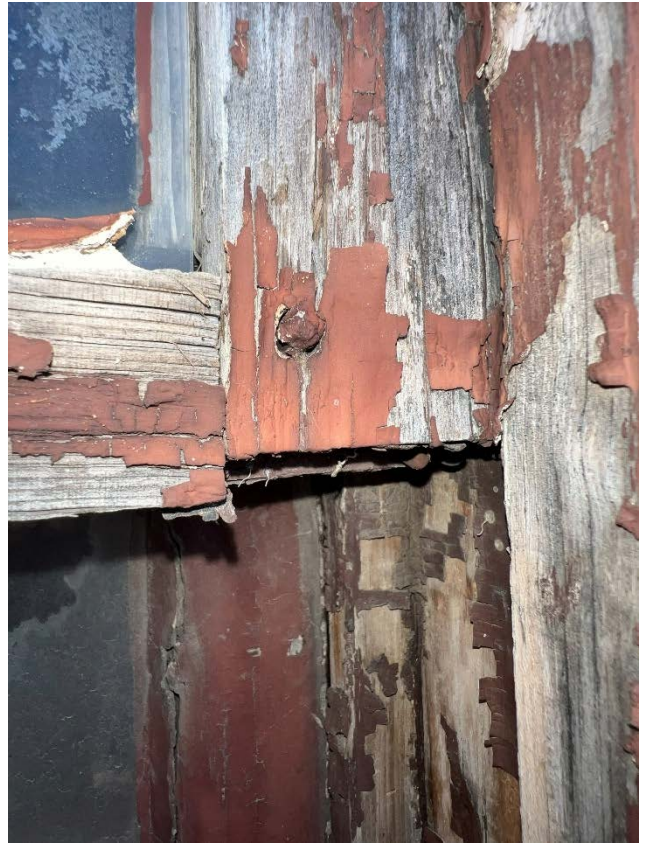
113 S. Fourth Ave., Ann Arbor, Michigan 48104
734.424.3344





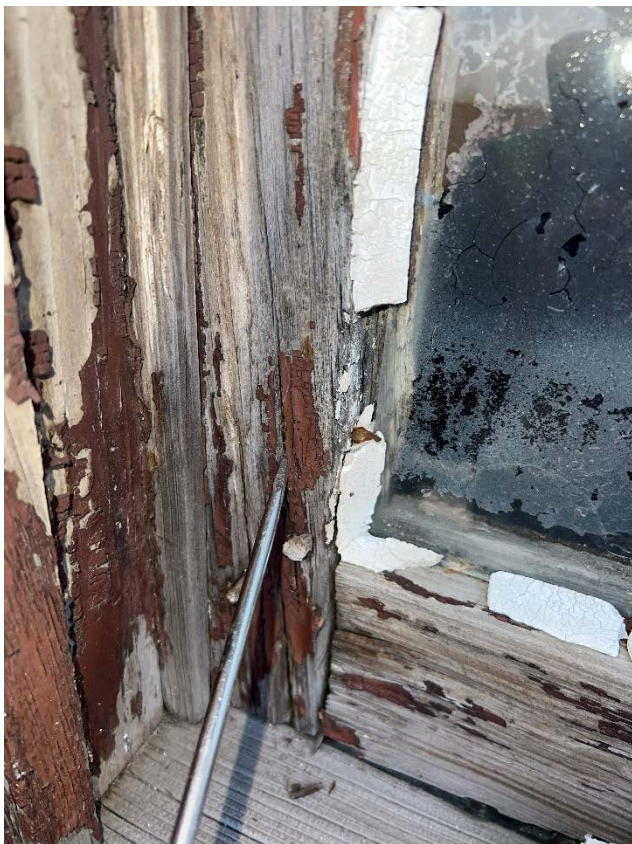
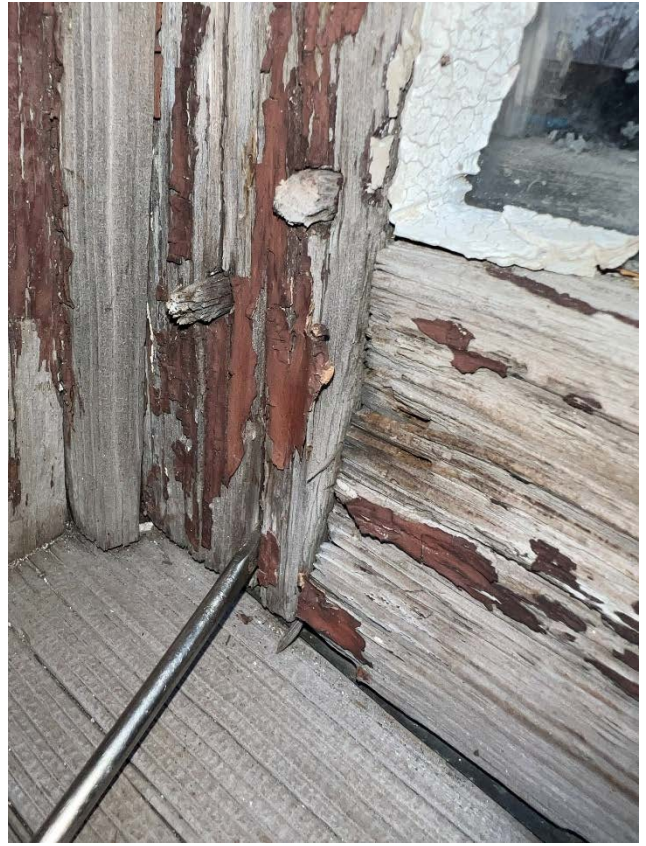
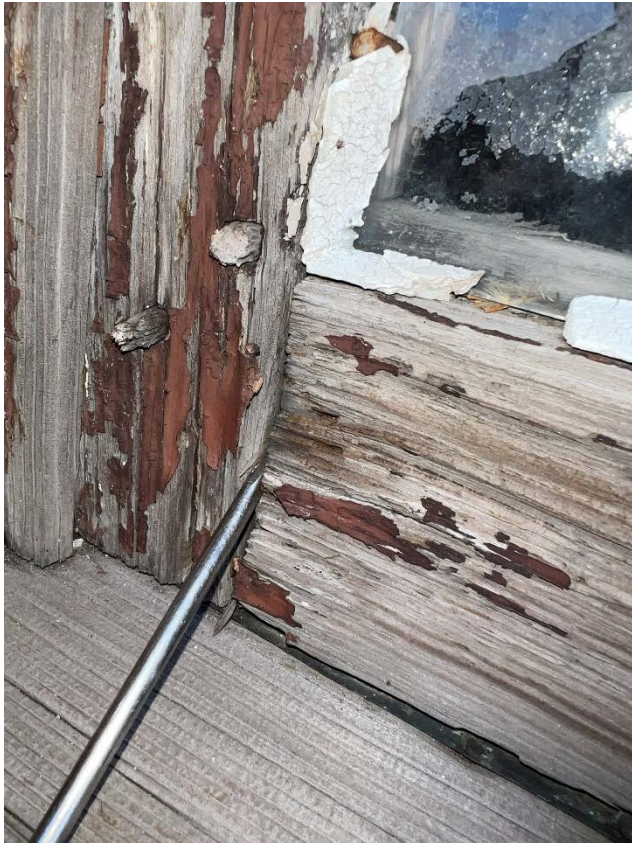


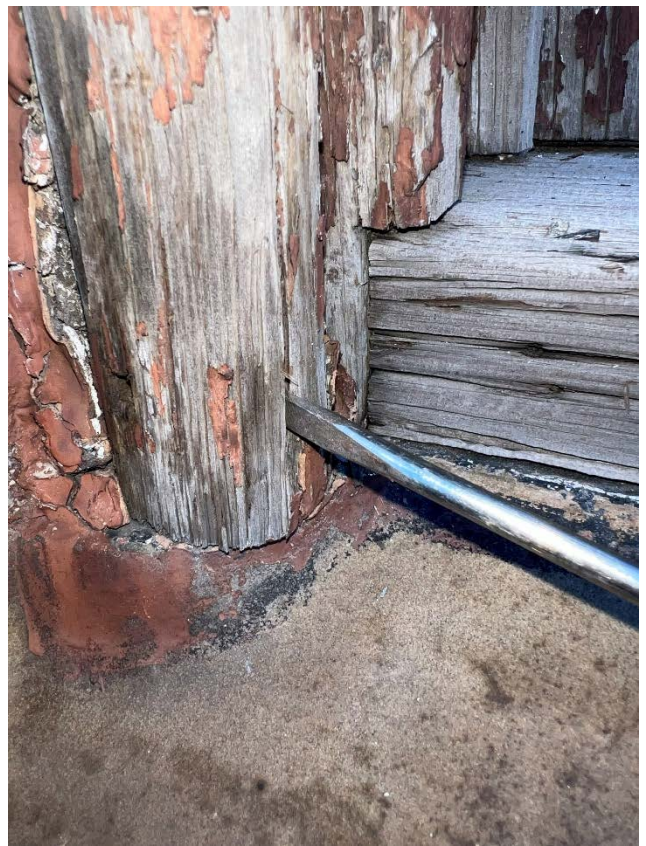
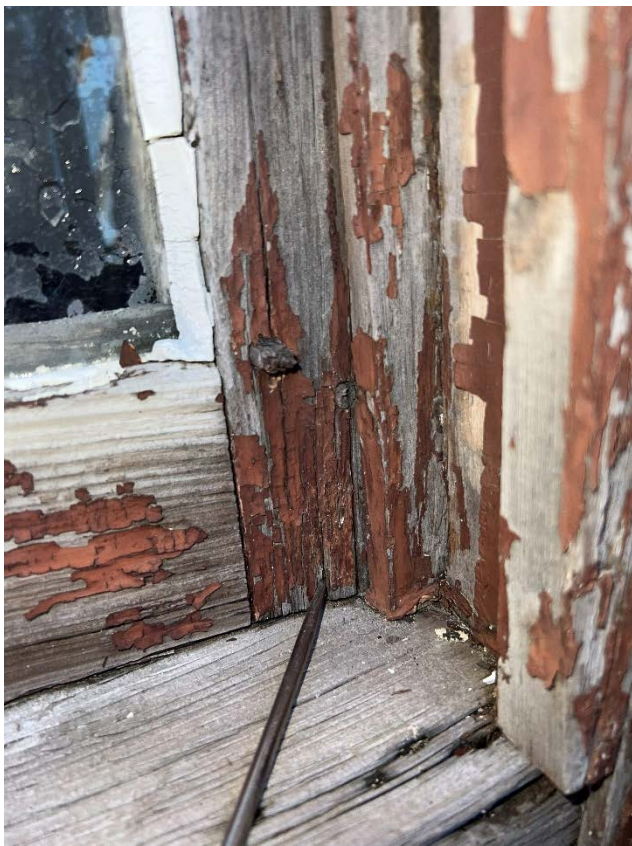
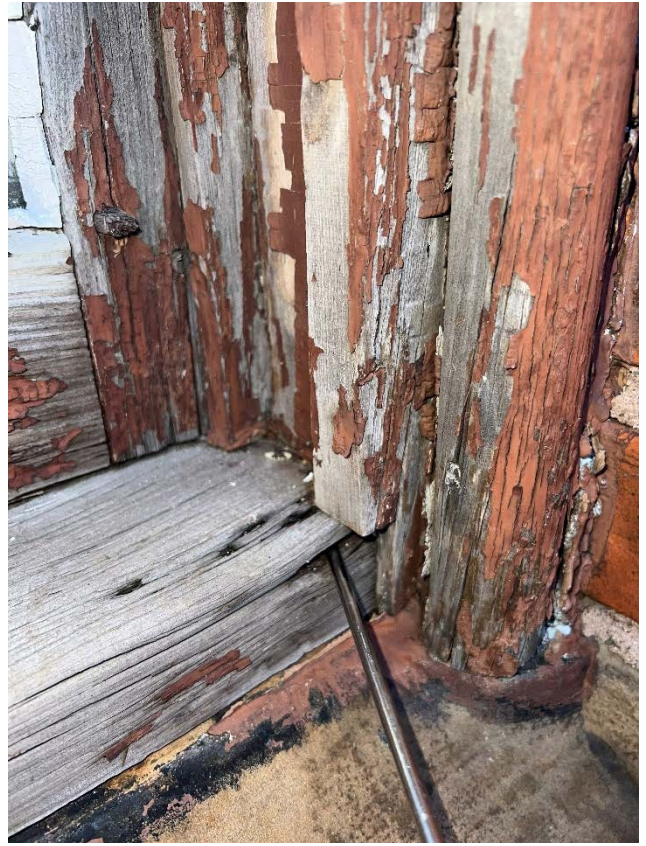
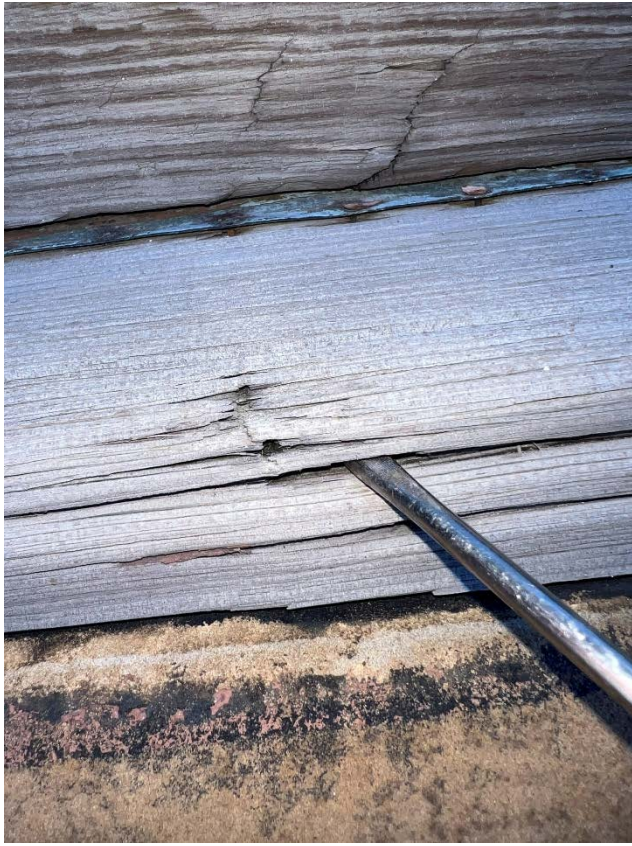


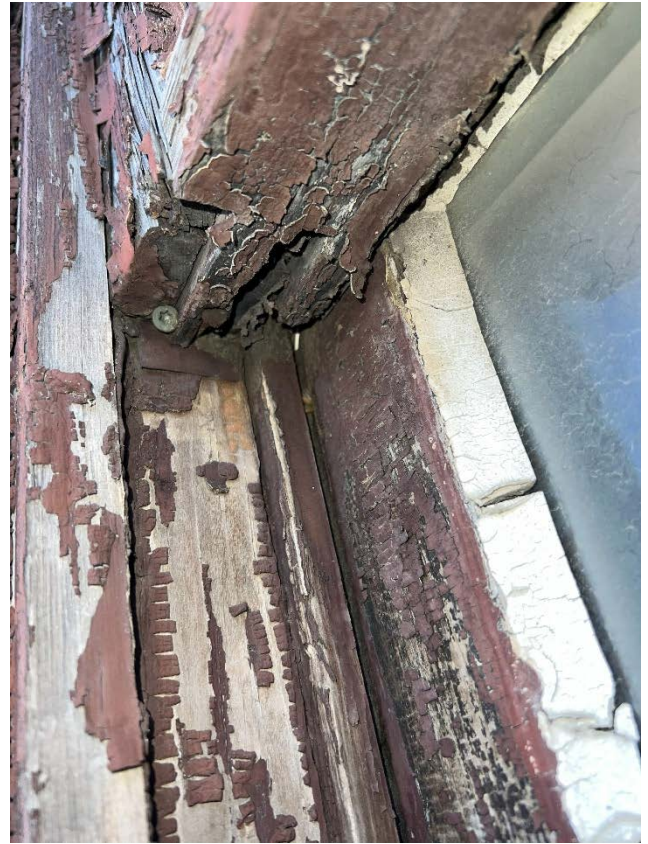


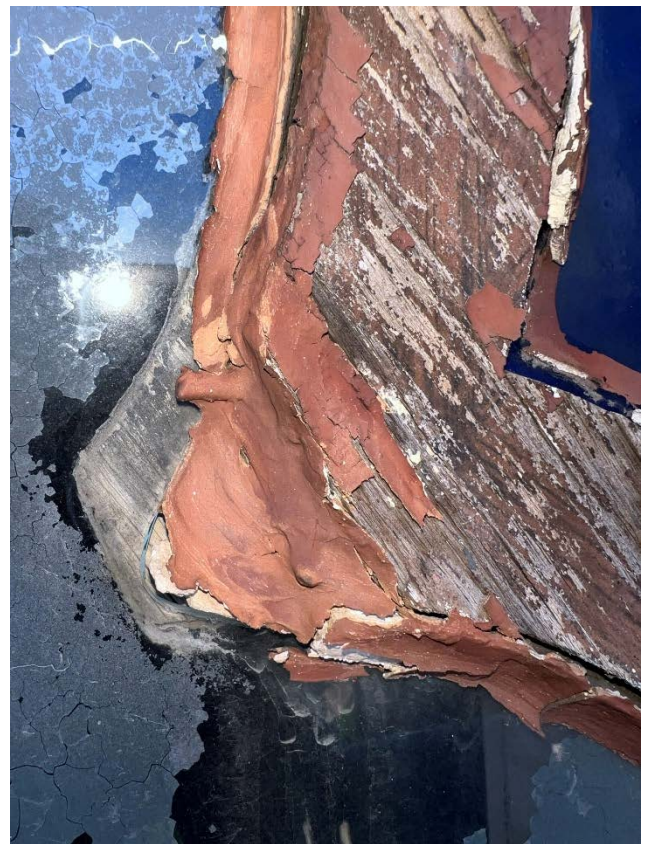
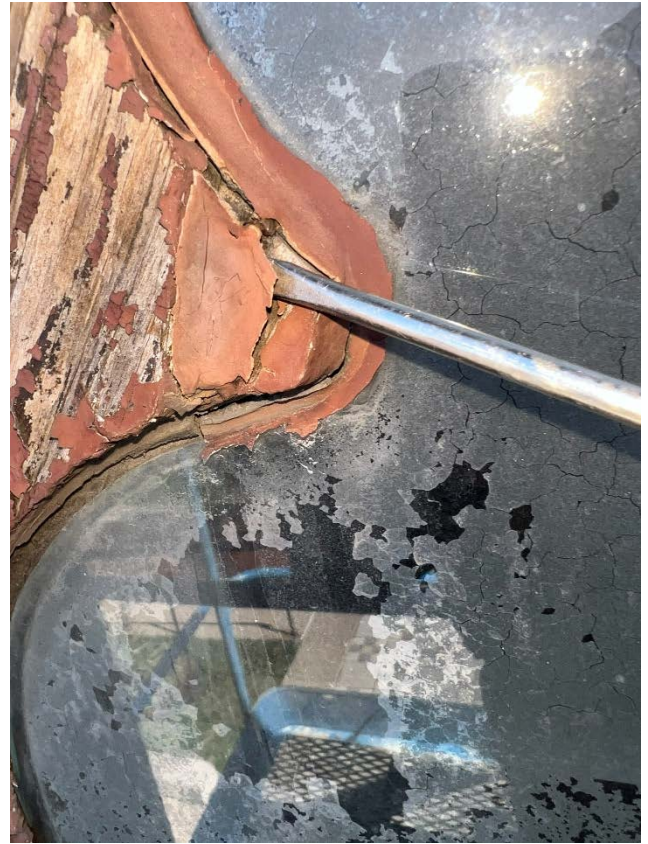
WINDOW #204 exterior elevation and detail views:







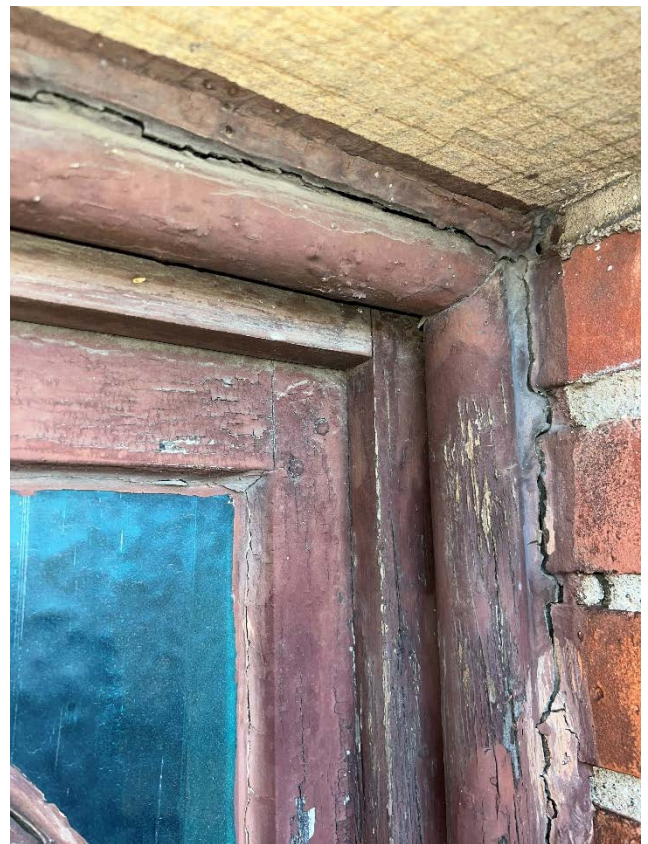


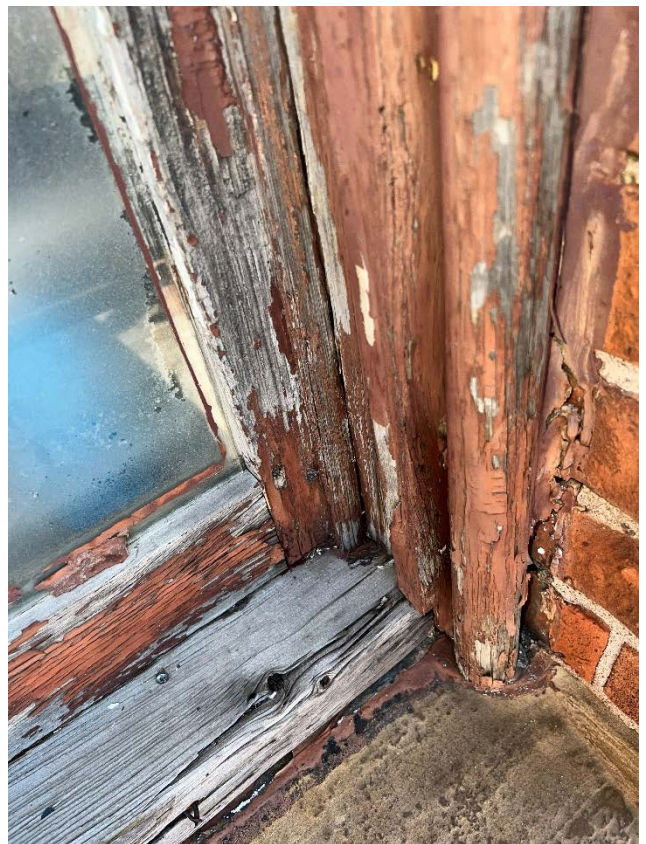
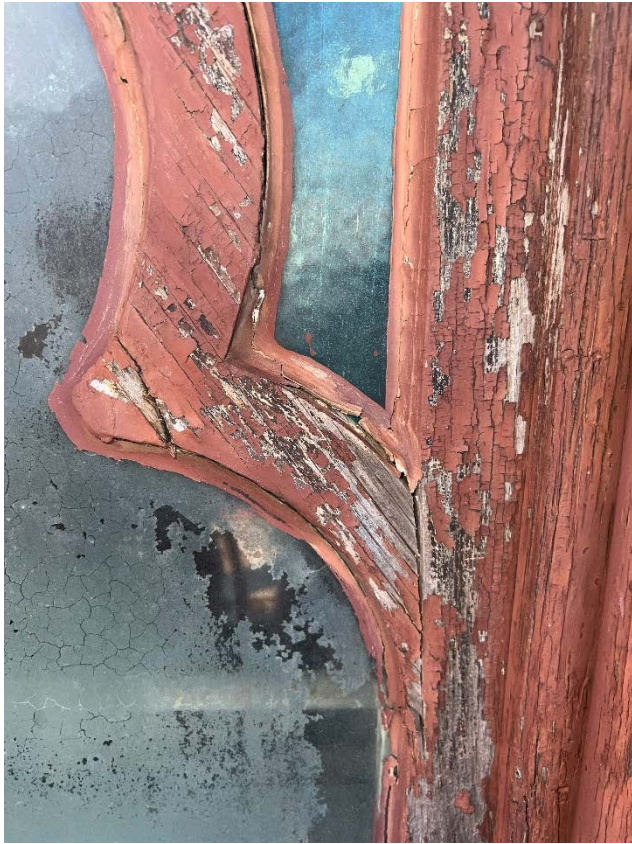


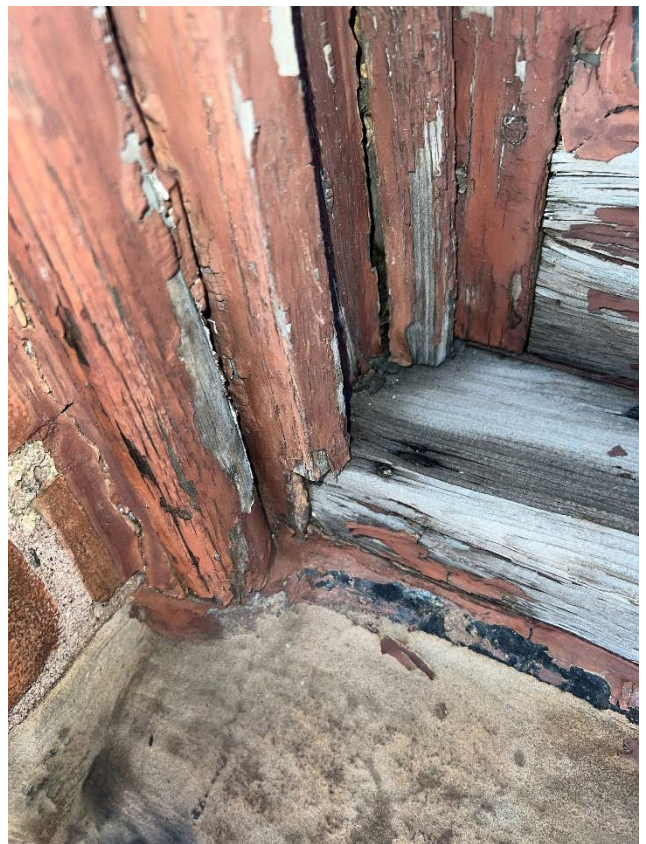


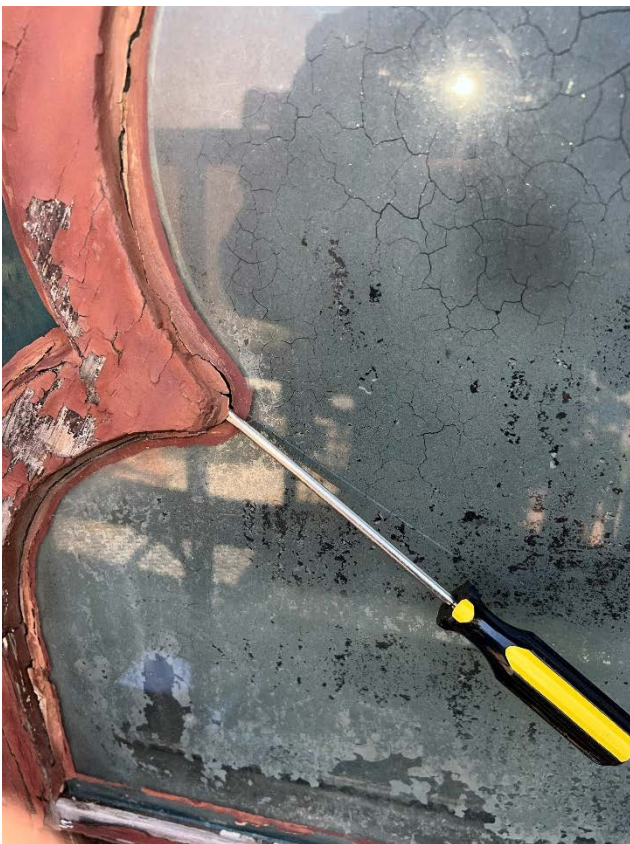
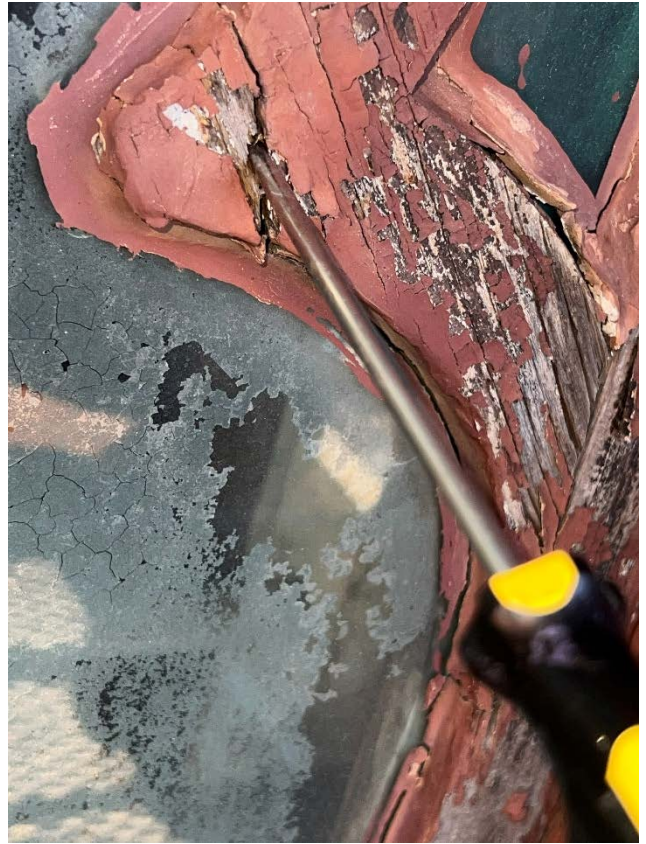
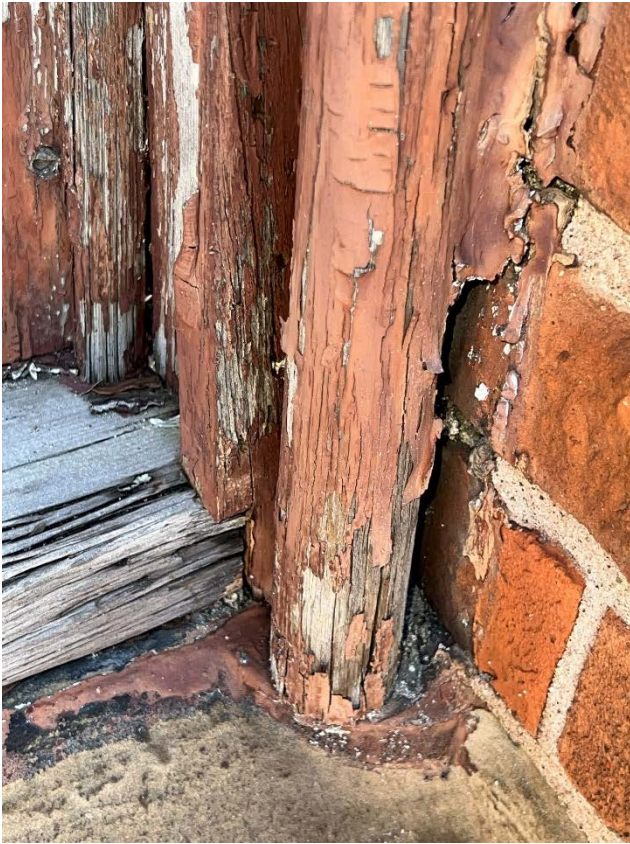
WINDOW #205 exterior elevation and detail views:

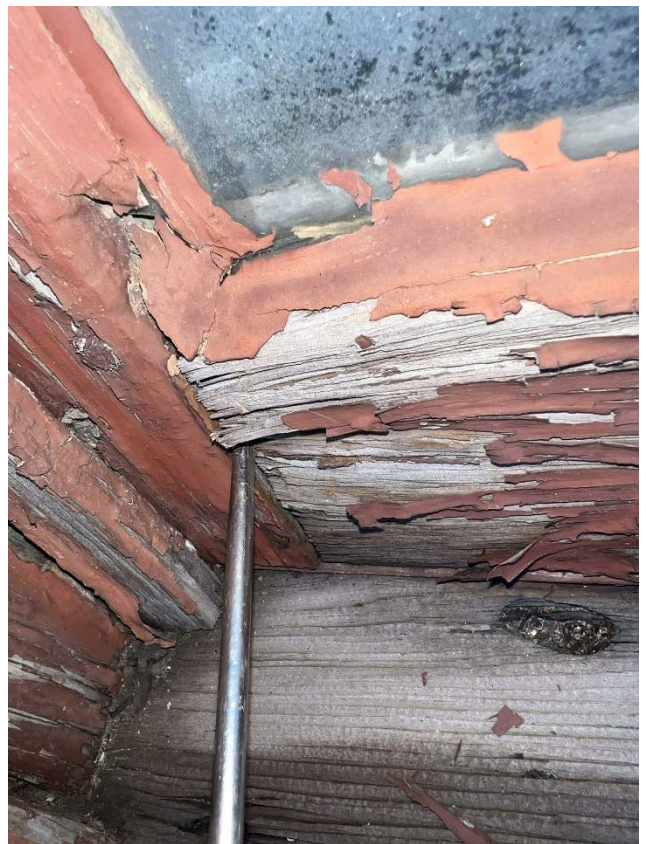
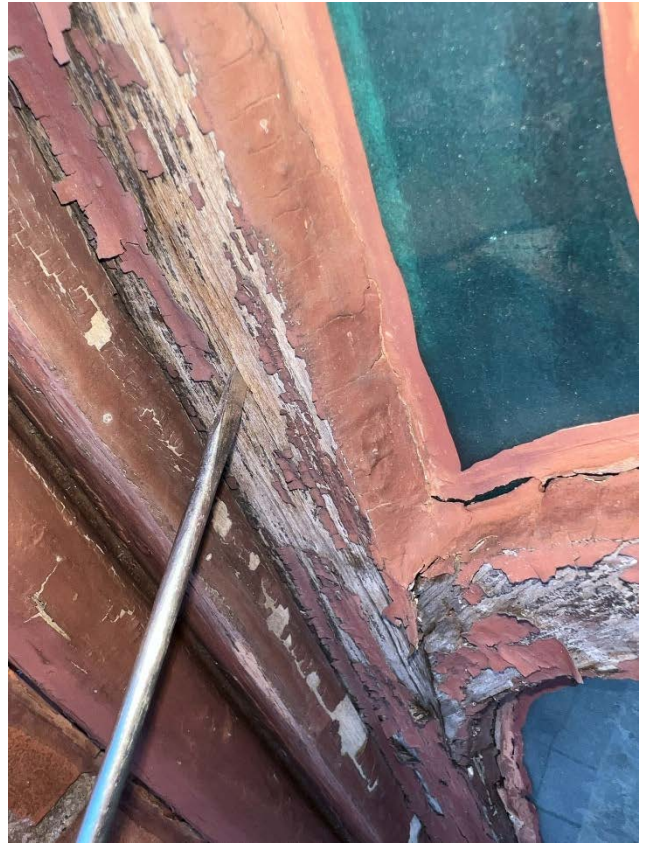


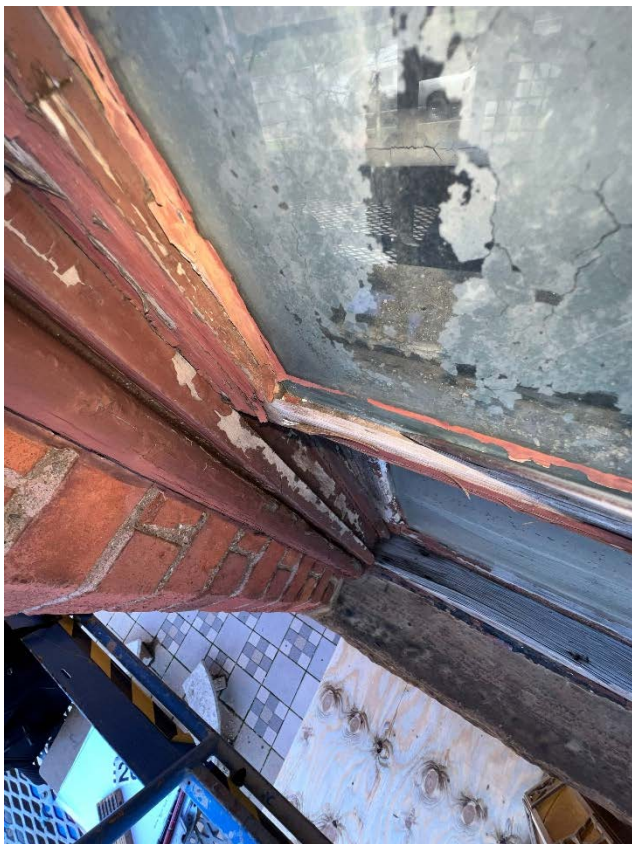
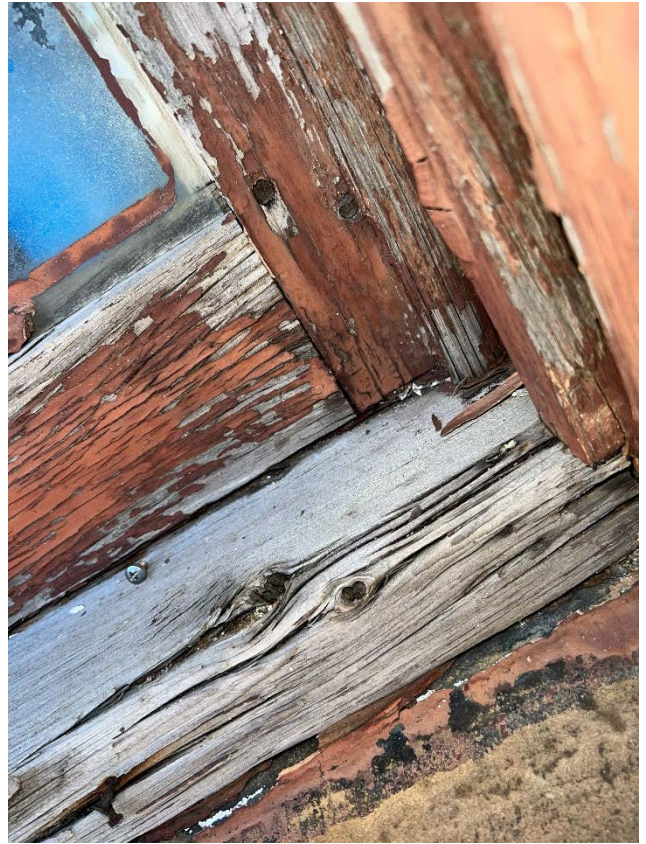
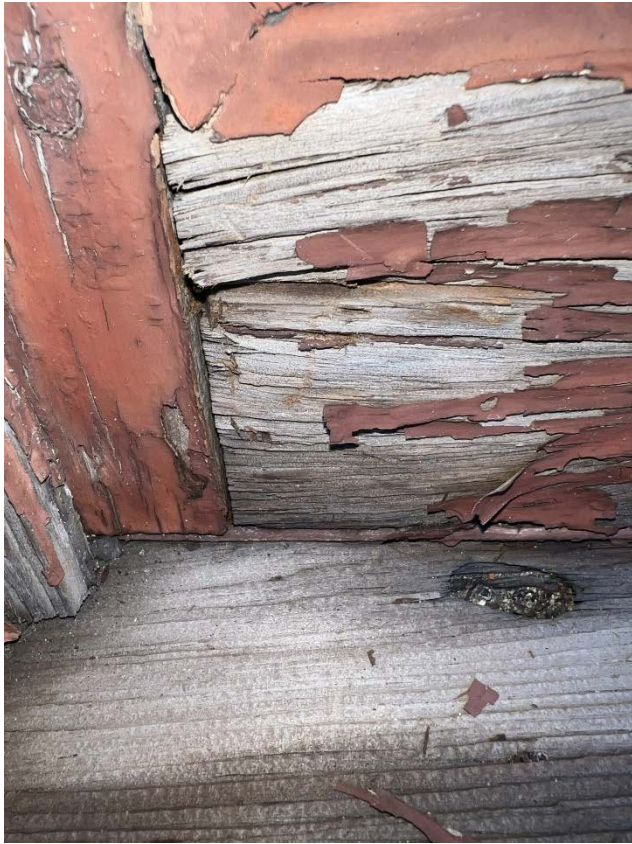












Rectory:

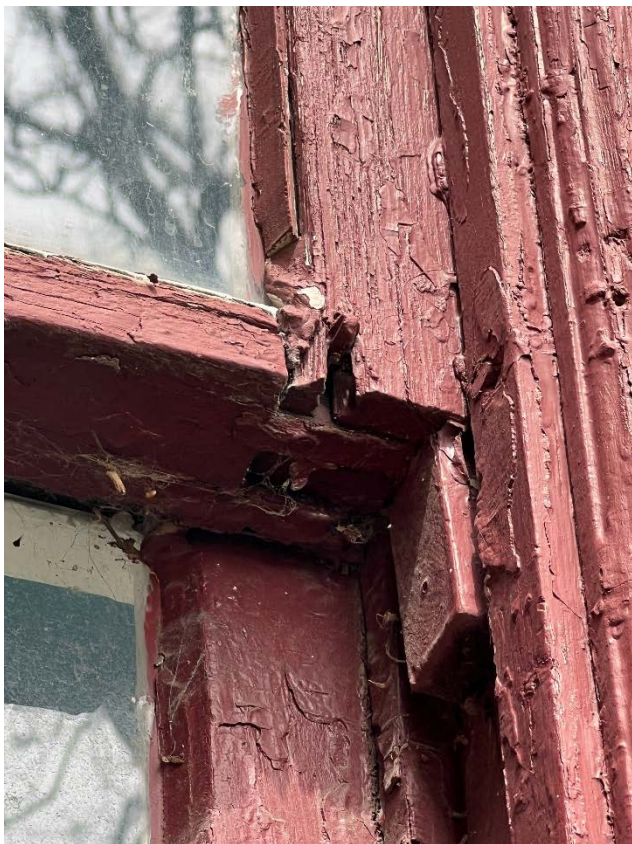
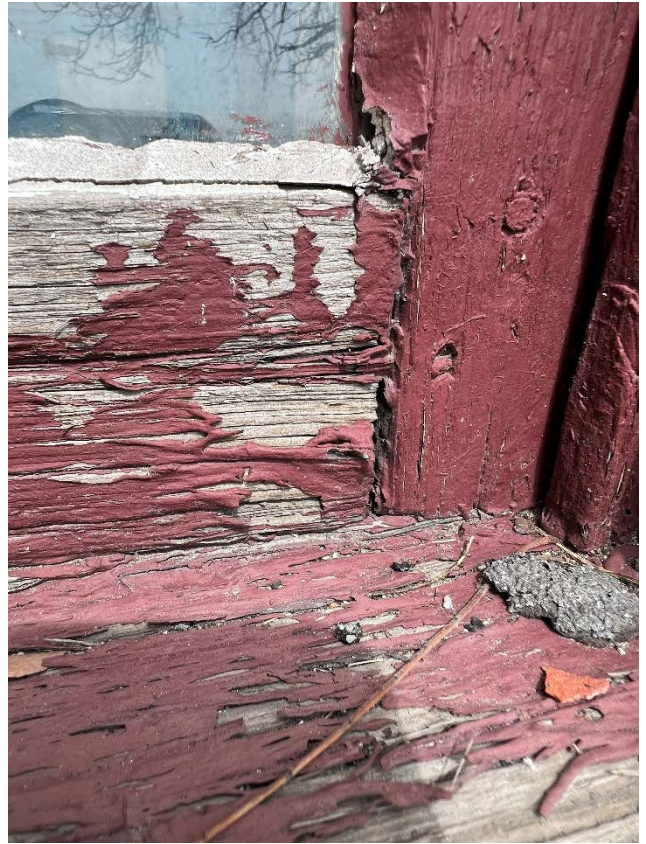
Historic wood double-hung window (#103) at 1st floor, south elevation. MARVIN Ultimate Wood Single Hung window proposed for replacement.

Historic wood french casement window, 2 wide/5 high lite pattern each sash (#104) at 1st floor, south elevation. MARVIN Ultimate Wood French Casement Inswing window proposed for replacement.

WINDOW #103 exterior elevation and detail views:



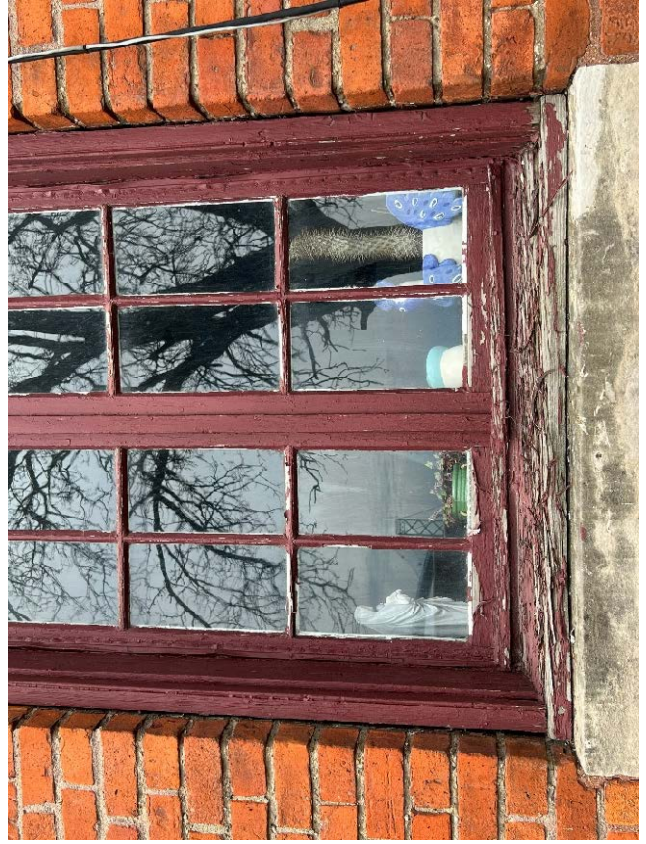






WINDOW #104 exterior elevation and detail views:







Wellness Center/Convent:

Historic wood fixed sash/picture window (#400A/B) at small roof dormer (middle), south elevation. MARVIN Ultimate Wood Casement Picture (fixed/not-operable) window proposed for replacement.

WINDOW #400A/B exterior elevation and detail views:





