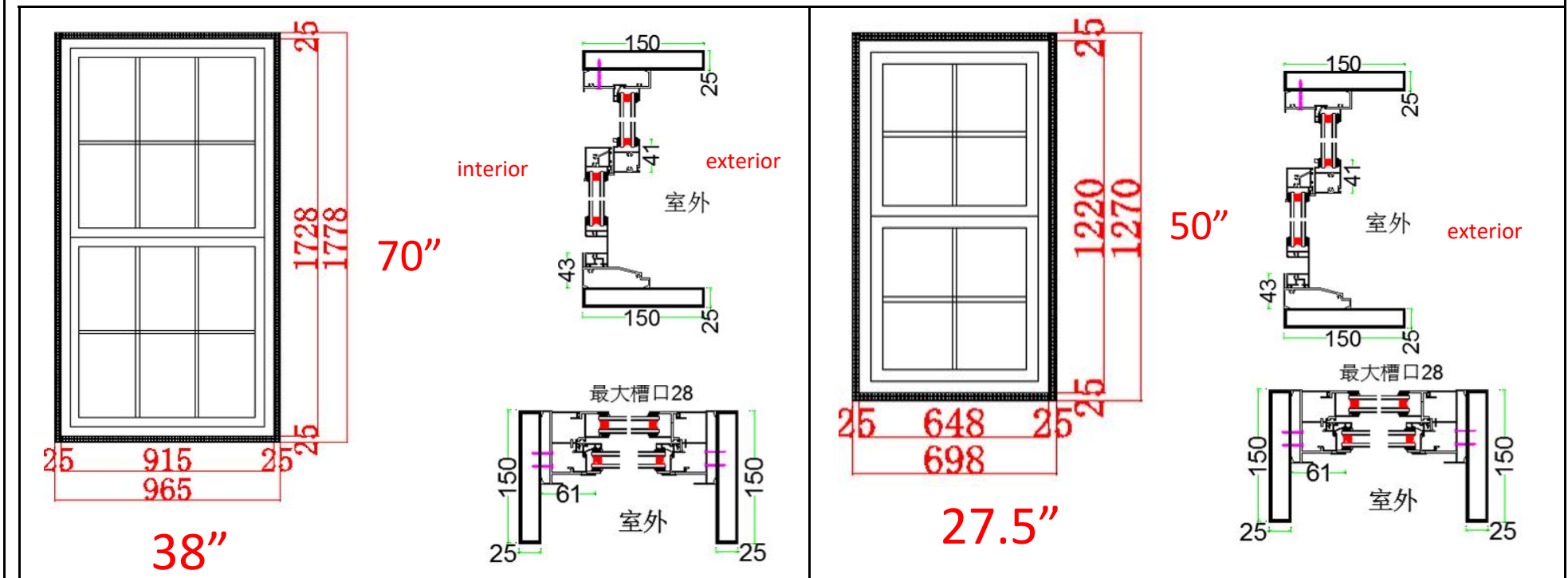




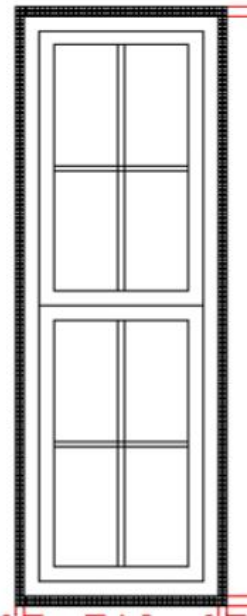
KINGS ARMS HOTEL

ARCHITECT REVIEW PACKAGE

470 Project Production drawing (Drawing from Interior view)

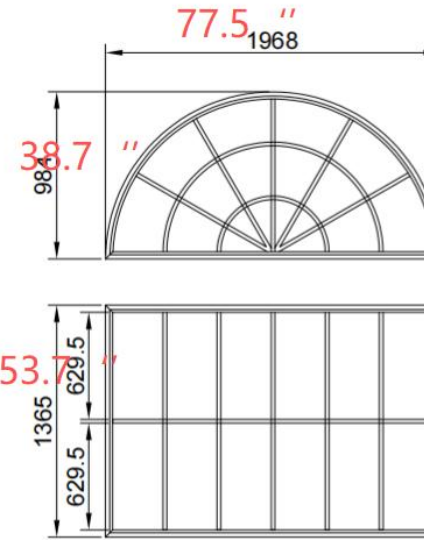
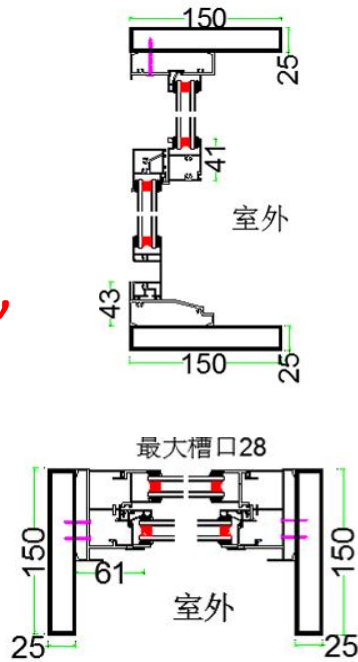


Item	W1	Products	83 series single hung window	Item	W2	Products	83 series single hung window
QTY	127	color	black	QTY	127	color	black
Grids	YES	Hardware	Chinese brand	Grids	YES	Hardware	Chinese brand
Flyscreen	NONE	Glass	5mm+9A+5mm+argon gas	Flyscreen	NONE	Glass	5mm+9A+5mm+argon gas
Remarks	Customize 6"*1" aluminum frame, NFRC certificate			Remarks	Customize 6"*1" aluminum frame, NFRC certificate		



64.5"

23.5"

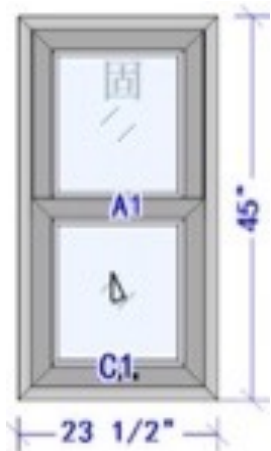
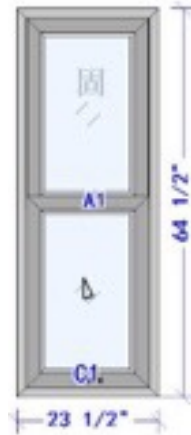


Item	W3	Products	83 series single hung window
QTY	4	color	black
Grids	YES	Hardware	Chinese brand
Flyscreen	NONE	Glass	5mm+9A+5mm+argon gas
Remarks	Customize 6"*1" aluminum frame, NFRC certificate		

Item	W4	Products	E2 series thermal break fixed window
QTY	3	color	black
Grids	YES	Hardware	Chinese brand
Flyscreen	NONE	Glass	6mm+20A+6mm+argon gas
Remarks	NFRC certificate		



ALUMINUM SINGLE HUNG 83 SERIES WINDOW

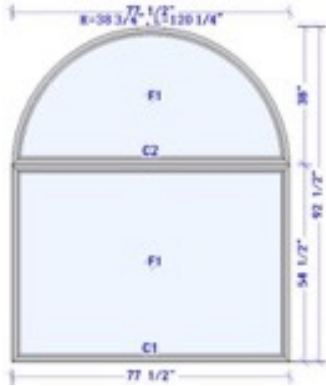


- PROFILE 6063-T5 ALUMINUM ALLOY
- 2.0MM THICKNESS
- BLACK COLOR
- BLACK COLOR STRIP BETWEEN GLAZE
- HIDDEN WATER DRAINAGE SYSTEM
- INTEGRATED HARDWARE
- NFC STANDARD
- DOUBLE TEMPERED SAFETY GLASS
- LOW E COATING
- DOUBLE PANE INSULATED
- 8MM+15A+8MM+LOW E+ARGON GLASS

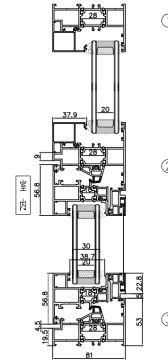
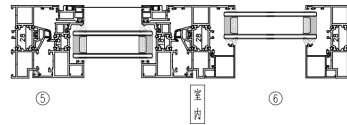
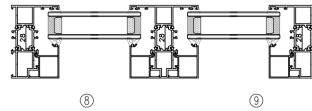
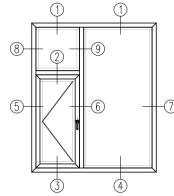




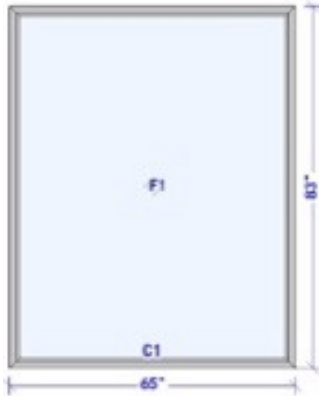
ALUMINUM E2 SERIES FIXED WINDOW



E2 Series casement window



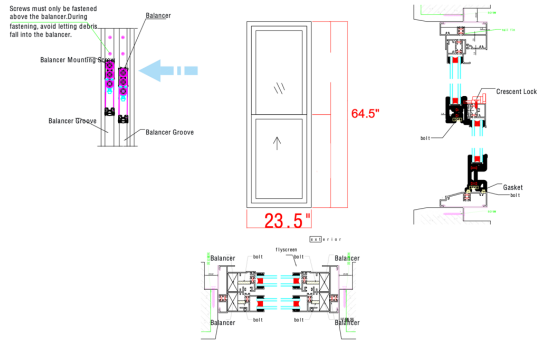
- PROFILE 6063-T5 ALUMINUM ALLOY
- 2.0MM THICKNESS
- BLACK COLOR
- BLACK COLOR STRIP BETWEEN GLAZE
- HIDDEN WATER DRAINAGE SYSTEM
- INTEGRATED HARDWARE
- NFC STANDARD
- DOUBLE TEMPERED SAFETY GLASS
- LOW E COATING
- DOUBLE PANE INSULATED
- 8MM+15A+8MM+LOW E+ARGON GLASS



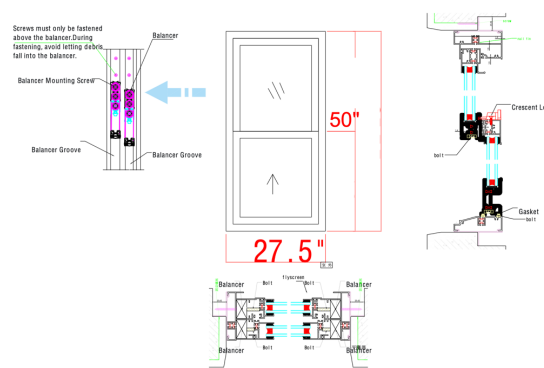


ALUMINUM SINGLE HUNG PROFILE 83 AND GLASS DETAILS

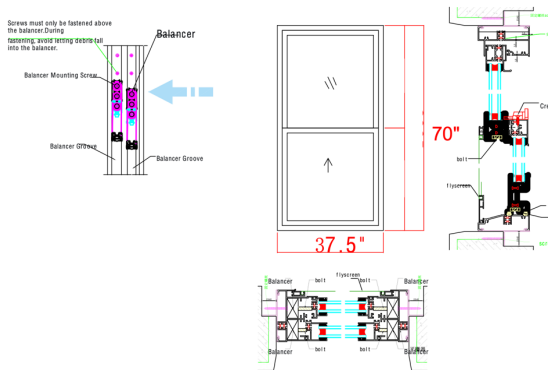
W1 83 Series single hung window, Black powder coating. QTY: 127 Set



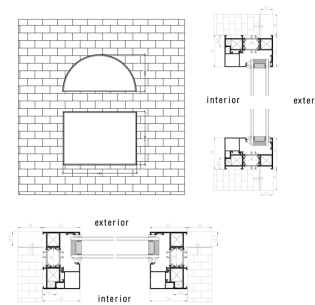
W2 83 Series single hung window, Black powder coating. QTY: 127 Set



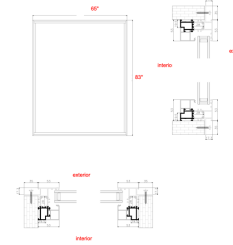
W3 83 Series single hung window, Black powder coating. QTY: 4Set



W3 E2 Series s Fixed window, Black powder coating. QTY: 3Set



W6 E2 Series s Fixed window, Black powder coating. QTY: 3Set



 National Fenestration Rating Council CERTIFIED	FOSHAN REALGRES BUILDING MATERIALS CO., LTD	
	ALUMINUM WINDOW AND DOOR DoubleLayer Glazed • Argon Fill • Low E FRG-N-1 00001-00001	
ENERGY PERFORMANCE RATINGS		
U-Factor (U.S./I-P)	Solar Heat Gain Coefficient	
0.29	0.23	
ADDITIONAL PERFORMANCE RATINGS		
Visible Transmittance	Air Leakage (U.S./I-P)	
0.34	≤0.3	
<small>Manufacturer stipulates that these ratings conform to applicable NFRCC procedures for determining whole product performance. NFRCC ratings are determined for a fixed set of environmental conditions and a specific product size. NFRCC does not recommend any product and does not warrant the suitability of any product for any specific use. Consult manufacturer's literature for other product performance information. www.nfrcc.org</small>		