



Photo: Window 004, exterior weight pocket detail.  
Typ. inherent flaw condition at historic wood dbl-hung units.

Photo: Window 004, exterior weight pocket detail.  
Typ. inherent flaw condition at historic wood dbl-hung units.

Photo: Window 107 (C), exterior weight pocket detail.  
Typ. inherent flaw condition at historic wood dbl-hung units.

Photo: Window 107 (C), exterior weight pocket detail.  
Typ. inherent flaw condition at historic wood dbl-hung units.



Photo: Window 004, exterior view.

Photo: Window 004, exterior weight pocket detail.  
Typ. inherent flaw condition at historic wood dbl-hung units.

Photo: Window 107 (A&C), exterior view.

Typical condition at all historic wood double-hung window units throughout the Parish Hall building, including at basement level.

Inherent flaw with historic window construction – the weight pocket access panel is located at exterior vertical jamb track. Many panels observed to be loose, damaged, or missing. This has allowed for water (perhaps insect and other) infiltration causing deterioration. No weight pocket access panels observed at interior.

**Integrity of historic window is compromised.**



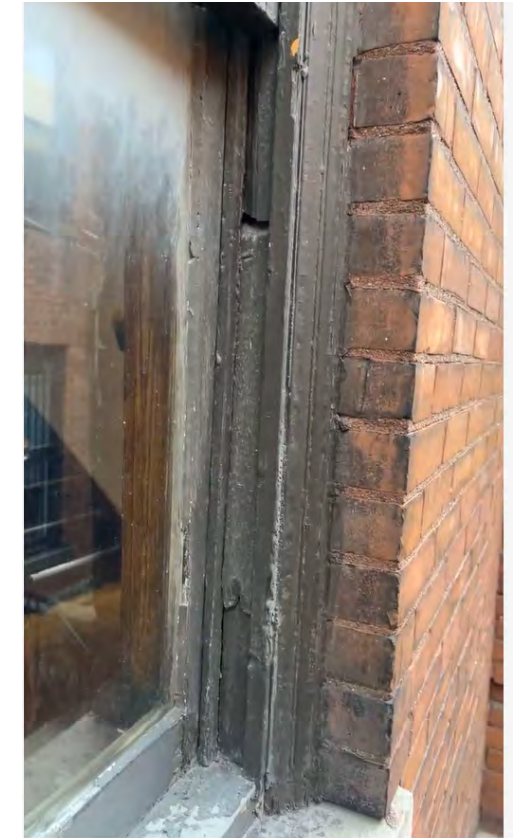


Photo: Window 113 (C), exterior weight pocket detail.  
Typ. inherent flaw condition at historic wood dbl-hung units.

Photo: Window 113 (C), exterior weight pocket detail.  
Typ. inherent flaw condition at historic wood dbl-hung units.

Photo: Window 112 (C), exterior weight pocket detail.  
Typ. inherent flaw condition at historic wood dbl-hung units.

Photo: Window 112 (D), exterior weight pocket detail.  
Typ. inherent flaw condition at historic wood dbl-hung units.



Photo: Window 113 (ABCD), exterior view.

Typical condition at all historic wood double-hung window units throughout the Parish Hall building, including at basement level.

Inherent flaw with historic window construction – the weight pocket access panel is located at exterior vertical jamb track. Many panels observed to be loose, damaged, or missing. This has allowed for water (perhaps insect and other) infiltration causing deterioration. No weight pocket access panels observed at interior.

**Integrity of historic window is compromised.**



Photo: Window 112 (A&C), exterior view.



Photo: Window 112 (B&D), exterior view.