

CONTRACTOR NOTE  
ALL CONTRACTORS (GENERAL CONTRACTOR, SUB-CONTRACTORS, MEMBERS OR AGENTS OF EITHER OR BOTH) ARE TO VERIFY AND COORDINATE ALL CONDITIONS, DIMENSIONS, QUANTITIES AND DETAILS, STATED OR NOT WITHIN THESE DRAWINGS AND WITHIN THE SPECIFICATIONS BEFORE COMMENCING WITH THE WORK. IF A DIMENSIONAL ERROR OR CONFLICT OCCURS BETWEEN THESE DRAWINGS, THE SPECIFICATION OR THE EXISTING / PROPOSED CONDITIONS, IT SHALL BE BROUGHT TO THE IMMEDIATE ATTENTION OF THE ARCHITECT, BEFORE PROCEEDING WITH THE WORK. ANY PARTY (GENERAL CONTRACTOR, SUB-CONTRACTORS, MEMBERS OR AGENTS OF EITHER OR BOTH) WHO FAIL TO DO SO TAKE FULL RESPONSIBILITY OF ANY ERRORS, CONFLICTS, SCHEDULE AND COST IMPLICATIONS.

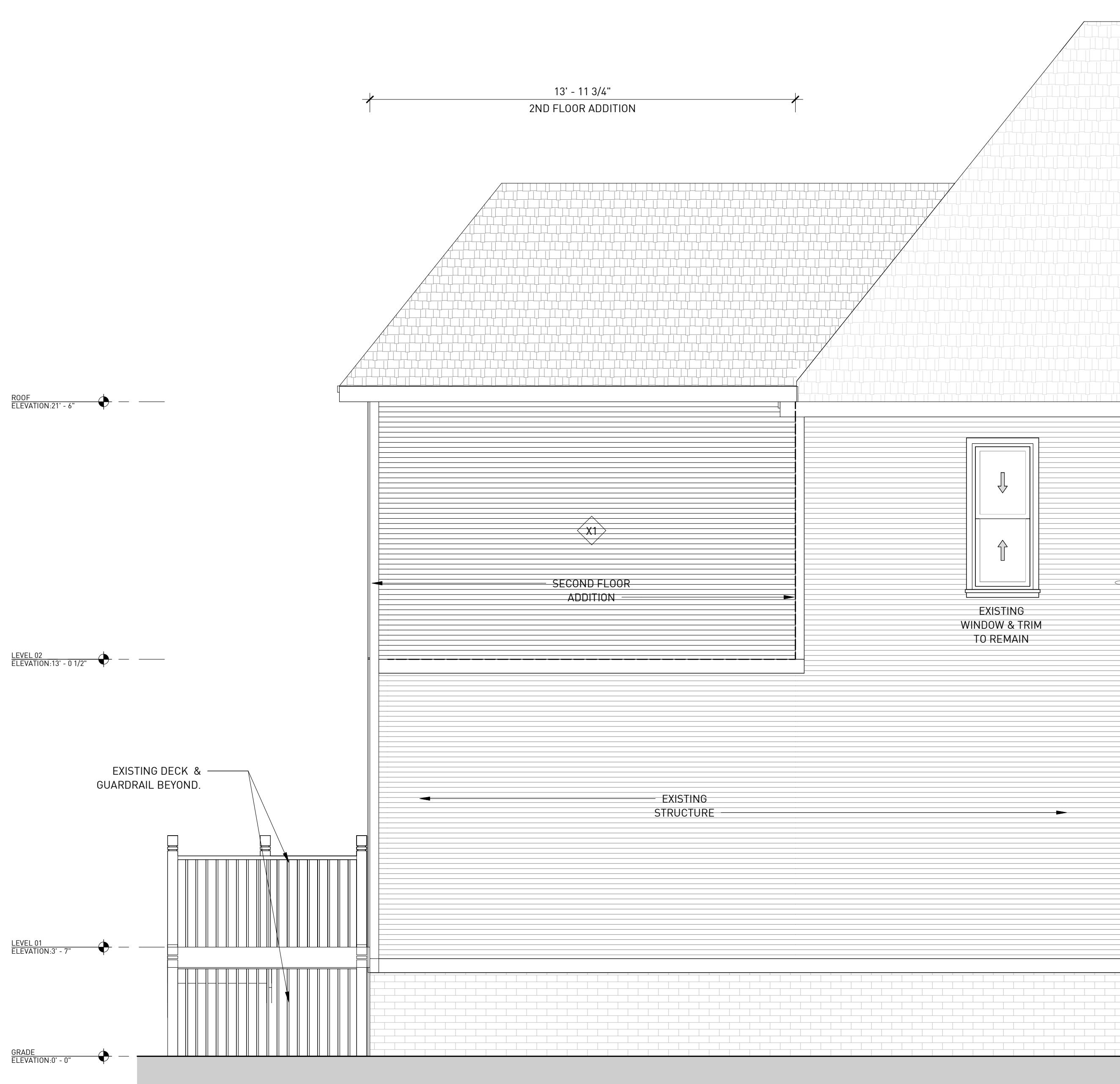
SUPERVISOR / CIVIL ENG.

STRUCTURAL ENG.

MEP ENGINEER

## ELEVATION GENERAL NOTES

- COORDINATE ALL BUILDING ASSEMBLY AND MATERIAL TRANSITIONS WITH ALL ASSOCIATED TRADES. WHERE AN ASSEMBLY IS TO COORDINATE WITH MULTIPLE ADJACENT ASSEMBLIES, MAKE ALL NECESSARY PREPARATIONS TO ENSURE SMOOTH, CONSISTENT AND UN-NOTICABLE FINISH ACROSS ENTIRE SURFACE.
- REFER TO BUILDING AND WALL SECTIONS FOR ELEVATION AND BUILDING HEIGHT INFORMATION.
- ALL KEYNOTE / CALLOUTS INDICATE AREAS OF WORK TO BE COMPLETED BUT MAY NOT COVER OR INCLUDE EVERY INSTANCE NECESSARY. CONTRACTOR IS TO FIELD VERIFY AND DOCUMENT ALL CONDITIONS (INTERIOR AND EXTERIOR PRIOR TO COMMENCING ANY SCOPE OF WORK.
- IF CONFLICTS EXIST BETWEEN THESE DRAWINGS / DOCUMENTS AND OTHER WITHIN THIS SET OR WITH THE PHYSICAL CONDITIONS, ALERT THE ARCHITECT IMMEDIATELY UPON DISCOVERY PRIOR TO FURTHER PHYSICAL CONSTRUCTION OF CONFLICT.
- ALL ASSEMBLIES ARE TO PERFORM ACCORDING TO ASSEMBLY DETAILS, ASSOCIATED UL RATINGS, AND THE SPECIFICATIONS.
- PROVIDE PRE-FINISHED ALUMINUM FLASHING, COUNTER FLASHING AND DRIP EDGES WHEREVER NECESSARY AND / OR INDICATED ON DRAWINGS TO MAINTAIN A WEATHER AND WATER TIGHT SEAL AND TO PRESERVE ALL WARRANTIES.
- CONTRACTOR IS TO CLEAN ALL CLADDING AND SIDING ASSEMBLIES UPON COMPLETION OF ALL EXTERIOR SCOPES OF WORK.
- REFER TO SPECIFICATIONS FOR ALL WINDOW AND DOOR INFORMATION.
- CONTRACTOR TO FIELD VERIFY ALL WINDOW AND DOOR OPENING DIMENSIONS.
- PREPARE ALL WINDOW AND DOOR OPENINGS WITH CONTINUOUS FLEXIBLE FLASHING APPROPRIATE FOR THE ASSEMBLY MATERIAL AND APPLICATION.
- REFER TO CIVIL ENGINEERING DRAWINGS FOR ALL GRADING AND ELEVATIONS. GENERAL CONTRACTOR TO COORDINATE GRADES AND ELEVATIONS ACROSS ALL TRADES AND DISCIPLINES THROUGHOUT THIS SET AND SITE CONDITIONS.
- COORDINATE LOCATION OF SCHEDULED EXHAUST PENETRATIONS ADJACENT TO OPERABLE WINDOW UNITS WITH REQUIREMENTS OF GOVERNING CODE.
- PROVIDE PRE-FINISHED, BREAK METAL FLASHING WITH "HEMMED" DRIP EDGE OVER SCHEDULED, GALVANIZED, LINTELS, COORDINATE WEATHER RESISTANT BARRIER (WRB), FLEXIBLE FLASHING, MORTAR NET, ETC. TO ENSURE WATERPROOF & DRAINABLE ASSEMBLY.



1 EAST ELEVATION  
ORIGINAL DRAWING SCALE: 3/8" = 1'-0"

1833 CHURCH STREET

1833 CHURCH ST, DETROIT, MI 48216

HDC REVIEW

NO.	DATE	DESCRIPTION
2	2026.03.31	HDC COMMENTS

NOT FOR CONSTRUCTION

EXTERIOR ELEVATIONS

A2-02