

[EXTERNAL] Prince Hall Grand Lodge - HDC2025-00010

From Jennifer Elmore <jennifer.elmore@thekraemeredge.com>

Date Tue 3/31/2026 11:34 AM

To Ellen Thackery <ellen.thackery@detroitmi.gov>

Cc Brian Rebain <barebain@thekraemeredge.com>

2 attachments (4 MB)

Pages from 2024010 PHL Exterior Lighting 3-6-26.pdf; 2024010 PHL A204 Signage 3-6-26.pdf;

Ellen,

I've reviewed the Phase One report for Prince Hall Lodge and have a few comments/clarifications noted below. Let me know if you have any questions.

1. Page 2- Missing Information

- a. Upon further review, it is confirmed that the sign has a power cord that extends to a junction box and conduit. I have corrected that on the drawing and attached it here.
- b. Finish for the above-door lights is Dark Bronze- we didn't have that marked on the cut sheet; it is corrected and attached here.

2. Page 3- Background Information

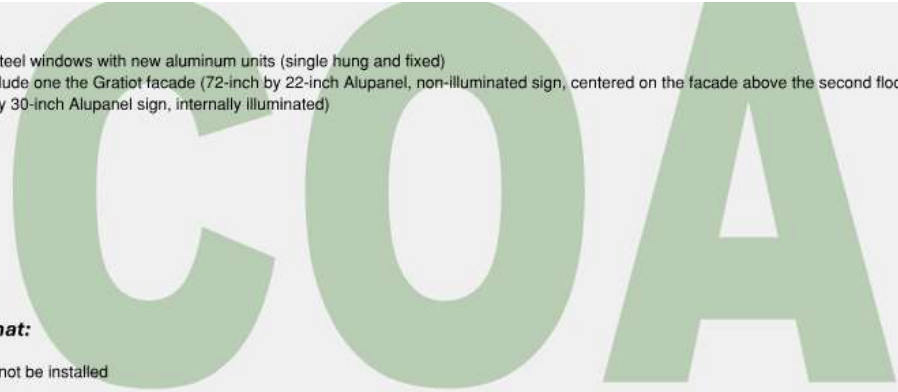
- a. The Certificate of Appropriateness issued in 2025 gave approval for a flat panel non-illuminated sign on the Gratiot façade and a flat panel internally illuminated sign on the McDougall façade. We concur that the LED sign was not approved.

**Description of Work:**  
*(continued on next page)*

- Replace vinyl, wood, and steel windows with new aluminum units (single hung and fixed)
- Install two new signs to include one the Gratiot facade (72-inch by 22-inch Alupanel, non-illuminated sign, centered on the facade above the second floor) and one on the McDougall facade (96- inch by 30-inch Alupanel sign, internally illuminated)

**With the Conditions that:**  
*(continued on next page)*

The proposed LED sign shall not be installed



Thank you,

Jennifer Elmore | Associate | Director of Architecture

AIA, NCARB

p 313 965 3399 x211

[KraemerDesignGroup](#) | [Intramode](#)

Detroit, MI | Toledo, OH | Charleston, SC







# WST LED

## Architectural Wall Sconce



Catalog Number

Notes

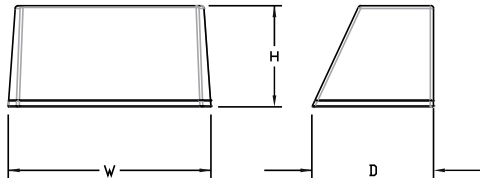
Type

Hit the Tab key or mouse over the page to see all interactive elements.

### Specifications

#### Luminaire

- Height:** 8-1/2" (21.59 cm)
- Width:** 17" (43.18 cm)
- Depth:** 10-3/16" (25.9 cm)
- Weight:** 20 lbs (9.1 kg)



### Introduction

The WST LED is designed with the specifier in mind. The traditional, trapezoidal shape offers a soft, non-pixelated light source for end-user visual comfort. For emergency egress lighting, the WST LED offers six battery options, including remote. For additional code compliance and energy savings, there is also a Bi-level motion sensor option. With so many standard and optional features, three lumen packages, and high LPW, the WST LED is your "go to" luminaire for most any application.

A+ Capable options indicated by this color background.

### Ordering Information

**EXAMPLE:** WST LED P1 40K VF MVOLT DBBTD

WST LED	Performance Package	Color temperature	Distribution	Voltage	Mounting
WST LED	P1 1,500 Lumen package	27K 2700 K	VF Visual comfort forward throw	MVOLT <sup>1</sup> 277 <sup>2</sup>	<b>Shipped included</b> (blank) Surface mounting bracket PBBW Premium surface-mounted back box <sup>3,4</sup> <b>Shipped separately</b> BBW Surface-mounted back box <sup>3</sup>
	P2 3,000 Lumen package	30K 3000 K	VW Visual comfort wide	120 <sup>2</sup> 347 <sup>2</sup>	
	P3 6,000 Lumen package	40K 4000 K		208 <sup>2</sup> 480 <sup>2</sup>	
		50K 5000 K		240 <sup>2</sup>	

Options	Finish (required)
NLTAIR2 PIR nLIGHT AIR Wireless enabled motion/ambient sensor for 8'-15' mounting heights <sup>5,6,7</sup>	<b>DBBXD</b> Dark bronze
NLTAIR2 PIRH nLIGHT AIR Wireless enabled motion/ambient sensor for 15'-30' mounting heights <sup>5,6,7</sup>	DBLXD Black
PE Photoelectric cell, button type <sup>8</sup>	DNAXD Natural aluminum
PER NEMA twist-lock receptacle only (controls ordered separate) <sup>9</sup>	DWHXD White
PER5 Five-wire receptacle only (controls ordered separate) <sup>9</sup>	DSSXD Sandstone
PER7 Seven-wire receptacle only (controls ordered separate) <sup>9</sup>	DBBTD Textured dark bronze
PIR Motion/Ambient Light Sensor, 8-15' mounting height <sup>5,6</sup>	DBLXD Textured black
PIR1FC3V Motion/ambient sensor, 8-15' mounting height, ambient sensor enabled at 1fc <sup>5,6</sup>	DNATXD Textured natural aluminum
PIRH 180° motion/ambient light sensor, 15-30' mounting height <sup>5,6</sup>	DWHGXD Textured white
PIRH1FC3V Motion/ambient sensor, 15-30' mounting height, ambient sensor enabled at 1fc <sup>5,6</sup>	DSSTXD Textured sandstone
SF Single fuse (120, 277, 347V) <sup>2</sup>	
DF Double fuse (208, 240, 480V) <sup>2</sup>	
DS Dual switching <sup>10</sup>	
DMG 0-10V dimming extend out back of housing for external control (control ordered separate) <sup>11</sup>	
E7WC Emergency battery backup, CA Title 20 Noncompliant (cold, 7W) <sup>7,12</sup>	
E20WH Emergency battery pack 18W constant power, Certified in CA Title 20 MAEDBS <sup>7</sup>	
E20WC Emergency battery pack -20°C 18W constant power, Certified in CA Title 20 MAEDBS <sup>7,12</sup>	
LCE Left side conduit entry <sup>14</sup>	
RCE Right side conduit entry <sup>14</sup>	
BAA Buy America(n) Act Compliant	
<b>Shipped separately</b>	
RBPW Retrofit back plate <sup>3</sup>	
VG Vandal guard <sup>15</sup>	
WG Wire guard <sup>15</sup>	

See Accessories and Notes on next page.