

MARVIN
ULTIMATE™
COLLECTION

HDC APPLICATION
1000 ST ANNE ST, DETROIT MI 48216

STE. ANNE DE DETROIT:
EXTERIOR RESTORATION AND SITE IMPROVEMENTS

LOCAL HISTORIC DISTRICT:
STE. ANNE'S PARISH COMPLEX

MARVIN® 

Basis of Design: For full manuf. replacement windows, to use MARVIN's Ultimate Wood Window collection The double-hung unit is typical for this project. Also have one casement, and multiple fixed awning/hopper window unit types.

ENDLESS POSSIBILITIES



CATALOG

Five Collections. One Legacy of Innovation.

Realize your unique vision, down to the last detail, with Marvin.

Born out of a legacy of innovation, the Marvin portfolio sets the highest standards in quality you can see and feel. Each premium collection blends inspired design and materials that perform.

Through expertly crafted architectural detailing, industry-leading engineering, and true partnership, Marvin helps open up a world of possibilities.

MARVIN ULTIMATE™ COLLECTION



Endless Possibilities

Realize unique visions with endless design possibilities, each meticulously crafted.

INTERIORS

Wood

Six species options + custom, two painted or primed options, six stains + Clear Coat

EXTERIORS

Extruded Aluminum

19 colors + custom

Wood

Three species + custom

SIZING

Standard + custom sizing for replacement, remodeling, or new construction

HARDWARE

Extensive selection including Marvin Gallery Hardware

COASTAL + WATERFRONT

Hurricane Impact Zones 3 (IZ3) + Performance Grade 50 products (PG50)

MARVIN MODERN™ COLLECTION



Authentically Modern

Achieve authentic modern architecture with expansive views and strong thermal performance.

INTERIORS

Extruded Aluminum

Five color options

EXTERIORS

High-Density Fiberglass

Five color options

SIZING

Custom sizing for remodeling or new construction

HARDWARE

Minimalist hardware for modern design aesthetic

COASTAL + WATERFRONT

Not available with Impact Zone (IZ) rating

MARVIN VIVID™ COLLECTION



Boldly Innovative

Complement transitional to contemporary architecture with dramatic sizes, durability, and energy efficiency.

INTERIORS

Fiberglass Reinforced Composite

Windows: Two color options

Ultrax Fiberglass

Doors: Two color options

EXTERIORS

Ultrax Fiberglass

Four color options

SIZING

Standard + custom sizing for replacement, remodeling, or new construction

HARDWARE

Available in four finish options with two door handle styles

COASTAL + WATERFRONT

Not available with Impact Zone (IZ) rating

MARVIN ELEVATE® COLLECTION



Beauty Meets Durability

Find the most in-demand traditional window and door types with natural wood interiors and Ultrax® fiberglass exteriors.

INTERIORS

Wood

Bare Pine, painted Designer Black, painted White, or Clear Coat

EXTERIORS

Ultrax Fiberglass

Six color options

SIZING

Standard + custom sizing for replacement, remodeling, or new construction

HARDWARE

Available in six finish options with two door handle styles

COASTAL + WATERFRONT

Hurricane Impact Zone 3 (IZ3) + Performance Grade 50 products (PG50)

MARVIN ESSENTIAL® COLLECTION



Streamlined Design

Choose from a streamlined selection featuring proprietary Ultrax fiberglass interiors and exteriors.

INTERIORS

Ultrax Fiberglass

Four color options

EXTERIORS

Ultrax Fiberglass

Six color options

SIZING

Standard + custom sizing for replacement, remodeling, or new construction

HARDWARE

Available in six finish options with one door handle style

COASTAL + WATERFRONT

Not available with Impact Zone (IZ) rating

Window Terms + Definitions

1

Frame

There are three components to the frame: the header across the top, the jambs down each side, and the sill across the bottom. Marvin® frames are built strong with a variety of high-quality wood species.

2

Lite

Each area of glass is called a lite. Marvin offers divided lite patterns for whatever look you wish to create.

3

Hardware

Marvin uses only the highest-quality locks, handles, lifts, pulls, and hinges in a wide variety of durable finishes.

4

Glazing

The glass in a window is called glazing. Marvin's broad range of glazing options can meet both high-performance and refined aesthetic requirements.

5

Sash

The sash – operating or stationary – is comprised of horizontal rails, vertical stiles, and glazing. Marvin's large solid sash offers a precise fit and ease of operation.



Window Operating Styles

Double Hung

Double hung windows have two movable sashes that operate vertically.



Casement

A window that is hinged to its frame at the side and opens like a door.



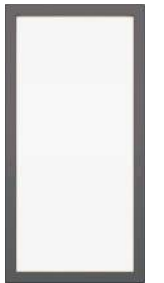
Awning

An awning is hinged to the frame at the top and opens outward. If hinged on the bottom, it's called a hopper.



Fixed or Picture

An inoperable window with direct glaze or in-sash configurations. Available in a wide range of polygon and radius shapes.



Glider

A window with a sash that slides horizontally to open and close.



In-Sash Picture

Fixed window designed to match the profiles of operable windows like double hung, casement, or awning.



Direct Glaze Picture

Fixed window with no sash – the glass is glazed directly into the frame.



Wood Double+ Single Hung

The Marvin Ultimate™ Wood Double+ Single Hung and Ultimate Wood Double Hung Magnum are quintessentially traditional windows designed to fit seamlessly into the historic fabric of your home, neighborhood, or community. With residential and commercial applications, these windows are perfect for any historic building.

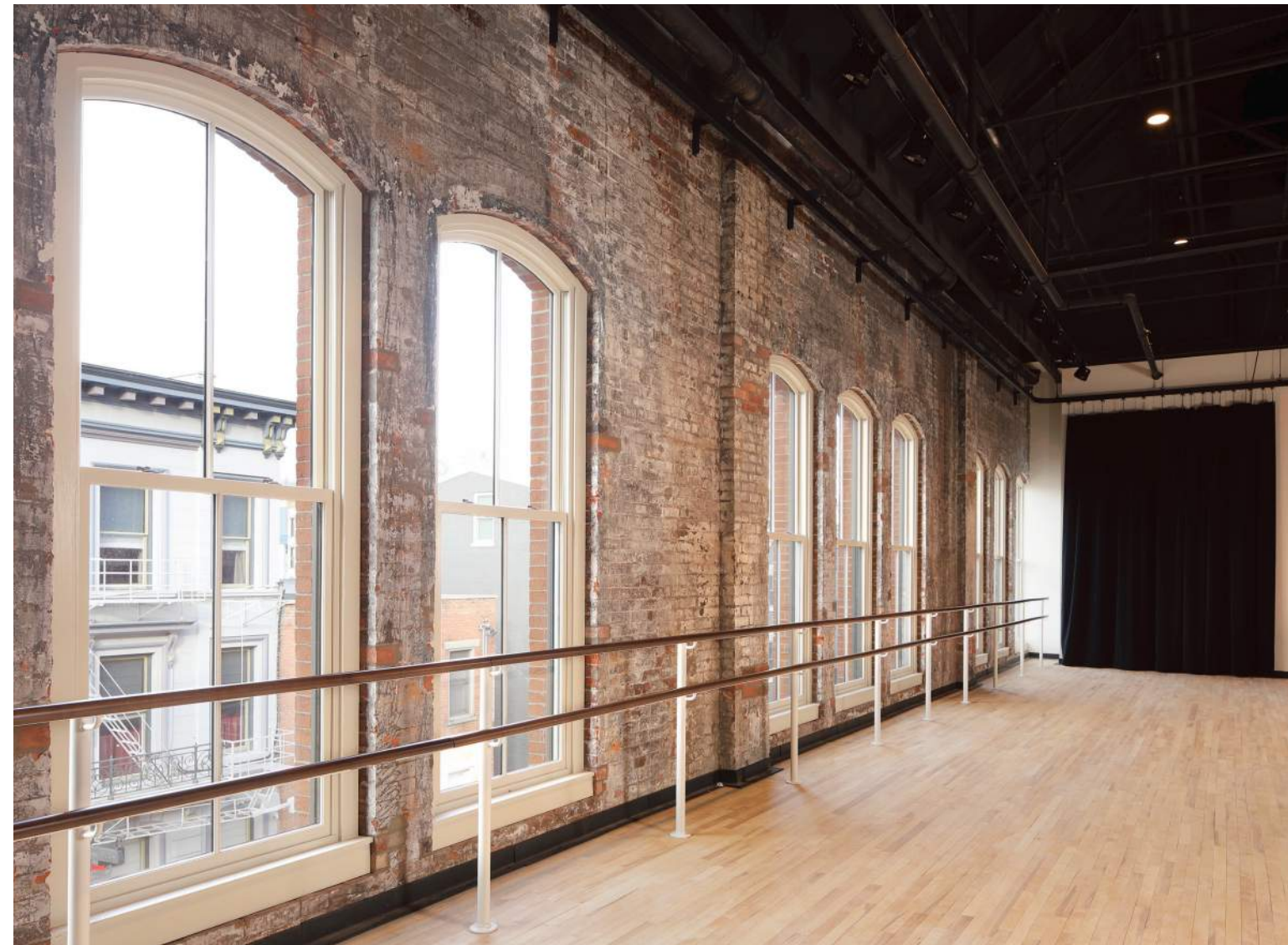


fig. 1

fig. 1 **DOUBLE HUNG ROUND TOP
MAGNUM G2 WINDOWS**
White

fig. 2 **INTERIOR VIEW**
Pine

fig. 3 **EXTERIOR VIEW**
Pine

fig. 4 **DOUBLE HUNG MAGNUM
G2 WINDOWS**
Coconut Cream



fig. 2



fig. 3



fig. 4

FEATURES

Narrow checkrail maximizes views while maintaining historical accuracy

Unique tilt-wash mode allows convenient cleaning of both sides of the glass from indoors

Also available as an insert window

Expansive sizes to fit openings up to 4' wide by 10' high

Choose traditional Ogee and Ovolo profiles, or square profiles for a more contemporary look

Casement Styles

Full Frame or Narrow Frame

Marvin Ultimate™ Casement and Ultimate Casement Narrow Frame windows are among the most versatile and innovative casement windows ever produced. Ultimate Casement styles feature concealed multi-point locks, a patented Wash Mode, and durable hardware that operates smoothly even at the largest sizes for easier operation in hard-to-reach areas.



ULTIMATE CASEMENT

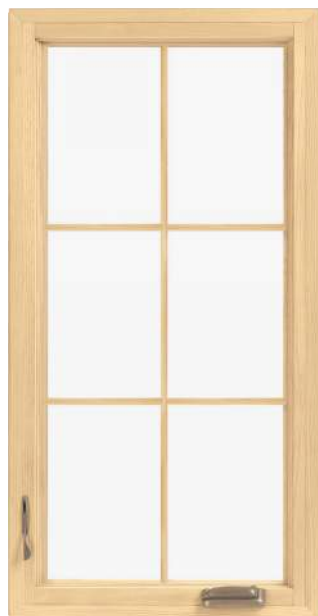
A recessed sash for a traditional look, plus a full jamb, offer design flexibility for new construction or full frame replacement.



Ultimate Casement Exterior with 4-3/16" Full Jamb
The Ultimate Casement has a recessed sash for a traditional or historic look.

ULTIMATE CASEMENT NARROW FRAME

A flush sash to the exterior and narrow jamb depth make this window an easy choice for frame-in-frame replacement or more contemporary new construction applications.



Ultimate Casement Narrow Frame Exterior with 2-3/16" Narrow Jamb
The Ultimate Casement Narrow Frame has a flush-to-frame sash for a contemporary look.

Casement Features + Options

Easy Wash Mode

Ultimate Casement windows allow access to both sides of the glass from inside your home, making it easy to wash them without ladders or stress.

Marvin-exclusive Wash Mode not available on Ultimate Casement windows in sizes less than 20" wide or Ultimate French Casement, Ultimate Awning, or Round Top windows.



Divided Lite Options

A variety of divided lite patterns further personalize your home and can even be used to make a casement look like a double hung. Perfect for replacing windows in older, more traditional homes.



Multi-Point Locking System

Multi-point locking mechanisms enhance performance and make large casements easy to operate.



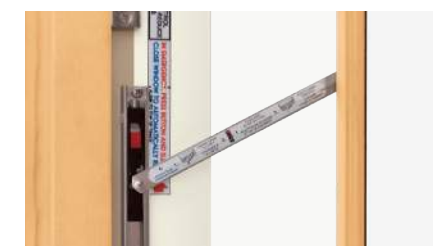
Lock Status Sensor

Hidden Lock Status Sensor option connects with your Smart Home Security to indicate when windows are closed and locked.



Large Sizes Open With Ease

We have developed the most durable hardware in the industry, which provides easy opening and smooth operation on even the largest casements.



Window Opening Control Device

Limits the casement sash opening to less than 4" when engaged. The release mechanism allows for operation beyond 4". This option meets the ASTM F2090-21 standard.



Friction Limiter

Flip a lever to lock the sash securely in place at multiple set angles, allowing you to keep your windows open on windy days. Available for push-out only.

Casement

The Marvin Ultimate™ Casement window is offered in some of the largest sizes in the Marvin portfolio, with a secure multi-point lock, durable hardware that ensures smooth operation, and the exclusive Wash Mode for easy cleaning – even on upper floors. With many design options, including round top shapes, the Ultimate Casement window flexes to fit your vision and can be sized to complement the most expansive views.

fig. 1 **CASEMENT WINDOWS**
Designer Black

fig. 2 **INTERIOR VIEW**
Pine

fig. 3 **EXTERIOR VIEW**
Gunmetal

fig. 4 **CASEMENT WINDOW**
Designer Black



fig. 1



fig. 2



fig. 3



fig. 4

FEATURES

Durable hardware for easy operation, even at large sizes

Unique Wash Mode allows convenient cleaning of both sides of glass from indoors

Choose crank-out or push-out operation

Multi-point locking system ensures a tight seal and security from top to bottom

Expansive sizes to fit openings up to 3'6" wide by 8'6" high

Choose traditional Ogee profiles or square profiles for a more contemporary look

French Casement

The Marvin Ultimate™ French Casement window pairs expert engineering with thoughtful design to offer a beautiful architectural window that won't compromise on performance or energy efficiency. The Ultimate French Casement has no center vertical post and opens like a French door. Simply crank open each independent sash or push out each sash and enjoy an unobstructed view.

fig. 1 **PUSH-OUT FRENCH CASEMENT WINDOWS**
Custom Finish

fig. 2 **INTERIOR VIEW**
Pine

fig. 3 **EXTERIOR VIEW**
Gunmetal

fig. 4 **CRANK-OUT FRENCH CASEMENT WINDOW**
Designer Black



fig. 2



fig. 4



fig. 1



fig. 3

FEATURES

Choose crank-open or push-open design

Provides uninterrupted views with no center vertical post

Durable hardware allows individual sashes to open easily

Unique Wash Mode allows convenient cleaning of both sides of glass from indoors

Multi-point locking system ensures a tight seal and security from top to bottom

Expansive sizes to fit openings up to 6' wide by 7' high

Choose traditional Ogee profiles or square profiles for a more contemporary look

Awning

A top-hinged alternative or complement to a casement window, the Marvin Ultimate™ Awning window is designed for performance and quality. With industry-leading sizes, the Ultimate Awning can be used on its own as a convenient option for hard-to-reach areas like over a sink or counter, or as a complement to adjacent windows, allowing fresh air access.

- fig. 1* **AWNING WINDOWS**
Painted White
- fig. 2* **INTERIOR VIEW**
Pine
- fig. 3* **EXTERIOR VIEW**
Gunmetal
- fig. 4* **AWNING PUSH-OUT SERVERY WINDOW**
Pine
- fig. 5* **AWNING WINDOW**
Designer Black
Photo by Dwell and Dwell Creative Services



fig. 1



fig. 2



fig. 3



fig. 4



fig. 5

AWNING FEATURES

Durable hardware for easy operation, even at large sizes

Choose crank-out or push-out operation

Multi-point locking system ensures a tight seal and security from top to bottom

Expansive sizes to fit openings up to 8' wide by 8' high

Choose traditional Ogee profiles or square profiles for a more contemporary look

AWNING SERVERY FEATURES

Available in heights up to 5' and widths up to 6'

1" tempered glass

Available with or without a sill

Interior Finish Options

Wood Species

Offering a rich, warm look, many custom options, and design versatility, wood is a premium choice. Wood can be used on both the interior and exterior of Marvin Ultimate™ windows and doors and provides great insulation. Treatments such as stain and paint work well when applied. Marvin sources the best, highest-quality raw wood and uses refined techniques to process it.



INTERIOR WOOD SPECIES



PINE



VERTICAL GRAIN DOUGLAS FIR



MIXED GRAIN DOUGLAS FIR



CHERRY



WHITE OAK



HONDURAN MAHOGANY

Stain + Paint

Compared with painting or staining on the jobsite, our factory finishes provide consistent quality and performance. Our extensive knowledge about wood as a material and how it handles stains and paints, and the many years we've spent perfecting our finishing process, ensures your windows and doors arrive ready to install.



STAIN COLORS



CLEAR



WHEAT



HONEY



HAZELNUT



LEATHER



CABERNET



ESPRESSO



CUSTOM Your choice

PAINT COLORS



DESIGNER BLACK



WHITE



PRIMED WHITE



CUSTOM Your choice

Exterior Finish Options

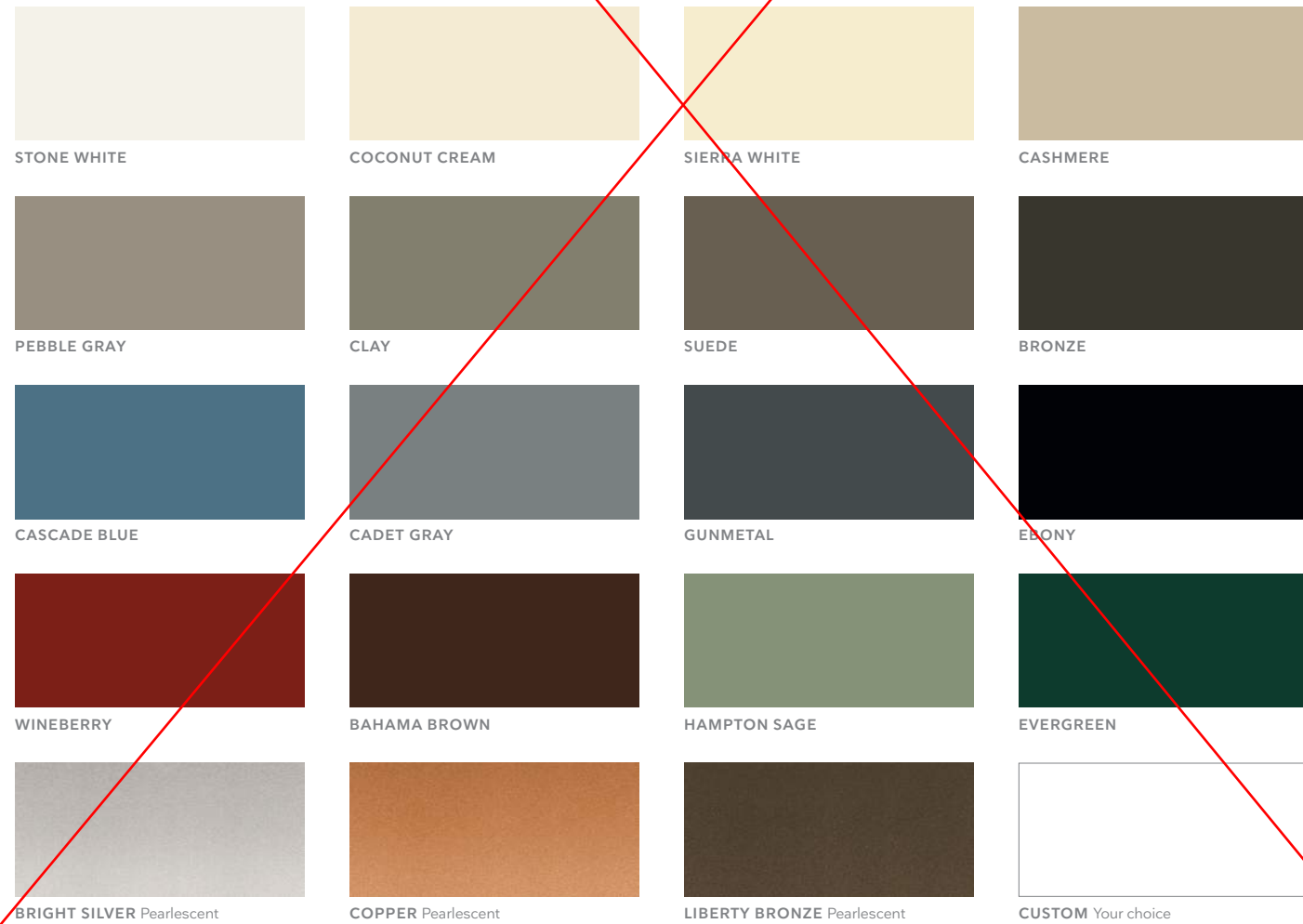
Extruded Aluminum

Extruded aluminum is an extremely tough cladding that protects wood windows, mimics the profiles of wood, and provides superior durability. It is the most commonly ordered exterior material for our Marvin Ultimate™ products.

Select from our palette of 19 durable extruded aluminum colors, including a spectrum of rich hues and three pearlescent finishes. If you have more specialized needs, we can also work with you to create a custom color.



EXTRUDED ALUMINUM FINISHES



Wood

Wood is a premium material for windows and doors, offering classic aesthetic appeal, many options for customization, and design versatility.

We treat exposed millwork with a water-repellent wood preservative to help it last longer. Choose from one of the three options below. Each is ready to be finished to match your project's exact requirements.



EXTERIOR WOOD SPECIES



TBD BY PRESERVATION ARCHITECT. RESEARCHING BENEFITS OF MAHOGANY OR ACCOYA WOOD SPECIES

* Accoya trim is a high-performance modified wood made from Radiata Pine that undergoes acetylation to minimize water absorption, resulting in exceptional stability and durability for exterior applications

Exterior Casings + Subsills

Adding Marvin® extruded aluminum or wood casings and subsills to your windows and doors provides great architectural detail to any home. Ultra-durable extruded aluminum casings feature a beautiful factory-applied finish that resists chalking, fading, pitting, corrosion, and marring. Casing profiles are consistent around the sides and top of a window or door, except for the Potter casing profile, which has a taller head. Custom casings and subsills are also available.

AT NEW REPLACEMENT MANUF. WOOD WINDOWS, NEW IN-KIND WOOD BRICKMOLD/EXTERIOR CASING THAT MATCHES EXISTING HISTORIC TO BE PROVIDED. CORRECT PROFILE(S) TO BE CONFIRMED BY PRESERVATION ARCHITECT, ESPECIALLY AT BUILDINGS WHERE MULTIPLE HISTORIC EXTERIOR TRIM PROFILES EXIST.

EXTERIOR CASING + SUBSILL OPTIONS



BRICK MOULD CASING
A246 SUBSILL



FLAT CASING
A246 SUBSILL



COLUMBUS CASING
A1450 SUBSILL



THORTON CASING
A1450 SUBSILL



RIDGELAND CASING
A1453 SUBSILL



STRATTON CASING
A1453 SUBSILL



GRAYSON CASING
A1451 SUBSILL



POTTER CASING
A217 SUBSILL

fig. 1 POTTER CASING
Cascade Blue

fig. 2 GRAYSON CASING
Bronze

fig. 3 FLAT CASING
Cadet Gray

fig. 4 BRICK MOULD CASING
Pebble Gray



fig. 1



fig. 3



fig. 2



fig. 4

Divided Lites

Marvin® offers divided lites in a number of different styles to create the traditional look of individual panes of glass with the energy efficiency of dual-pane insulation.

Our custom capabilities allow us to create almost any divided lite pattern to match your design style.*



Simulated Divided Lite (SDL)

SDL bars are permanently adhered to both sides of the glass. Simulated Divided Lites with Spacer Bars (SDLs) are an energy-efficient way to create the look of authentic divided lites.



Authentic Divided Lite (ADL)

Separate panes of glass are glazed between muntin bars for historical accuracy. Available exclusively with wood exterior units.



Grilles-Between-the-Glass (GBG)

Grilles are permanently installed between the glass panes. This low-maintenance grille offers the look of a divided lite pattern with the ease of cleaning just one pane of glass. Available with different interior and exterior colors.

fig. 1 PRAIRIE 9 TOP AND BOTTOM
Clay

fig. 2 CUSTOM PATTERN
Suede

fig. 3 CUSTOM PATTERN
Bahama Brown

fig. 4 BOTTOM SASH COTTAGE
Sierra White



fig. 1



fig. 3

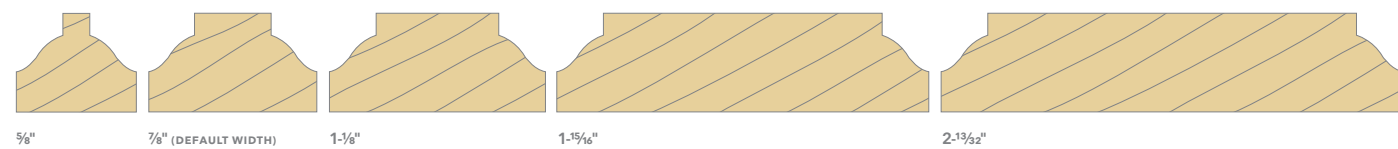


fig. 2

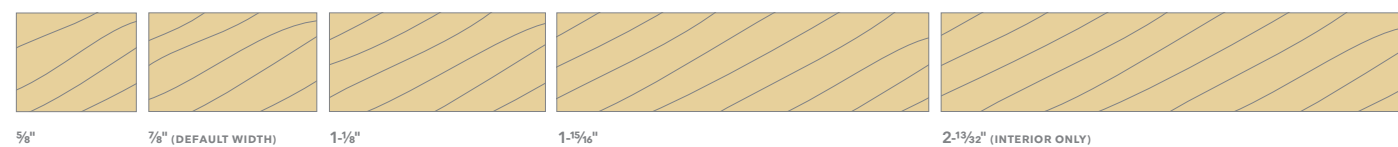


fig. 4

OGEE DIVIDED LITE WIDTHS



SQUARE DIVIDED LITE WIDTHS



* For more options, visit marvin.com

Glass + Glazing

The thermal and structural properties of wood combined with the right glazing make Marvin® wood and extruded aluminum-clad products an optimal choice for energy efficiency. We offer thousands of window and door options with two or three panes of glass and a range of glazing options to meet the performance challenges of any climate.

Dual-Pane Glazing

Our standard glazing is dual pane: two panes of glass with Low E coatings and insulated with argon gas. Compared with a single glass pane, dual-pane glass cuts energy costs significantly because of low-emissivity coating and the gas-filled insulating space between the glass layers.



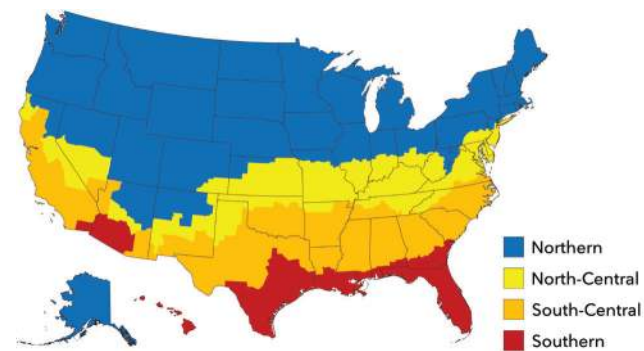
Triple-Pane Glazing

Triple-pane glazing consists of three panes of glass with Low E coating applied to the surface. Two glass spaces are insulated with argon gas between the panes. Available in products where glazing thickness can be greater than ¾".



Glass Coatings

Low E coatings are microscopically thin, essentially invisible coatings on the glass surface that help manage the amount of light and heat conducted through a window pane or reflected away from it, reducing a home's dependence on heat and air conditioning. The national ENERGY STAR® program recognizes products that meet strict energy-efficiency guidelines to suit climates in different areas of the country, and Marvin offers products to meet climate and code requirements in every region.



Low E1

Low E1 coating is a good choice when you want maximum solar heat gain and radiant heating properties. This type of coating is generally used in Northern climates where heating is prioritized over cooling. You'll reap maximum benefits when windows with this type of coating are positioned to receive direct sun exposure.

Low E2

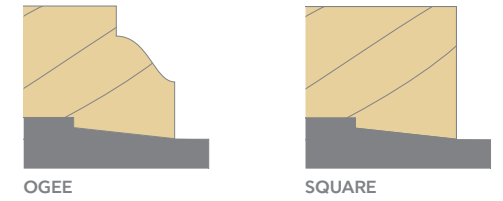
The most common Low E coating, since it works well across most geographic regions and climates. Low E2 with two metallic coatings balances less solar heat gain and improved radiant heating properties.

Low E3

Used in applications where solar heat gain may be a concern, Low E3 coating uses multiple metallic layers for radiant properties similar to Low E2. This type of coating is most commonly used in Southern, sunny climates where cooling is prioritized over heating.

Glazing Profiles

Ogee and square interior and exterior glazing profiles are available. Choose Ogee for more traditional projects, and square for a clean, contemporary look. Interior and exterior glazing profile options vary by product type.



Specialty Glass

Our specialty options include glass for unique project needs like sound abatement (STC/OITC), high altitudes, Sea Turtle Conservation Codes, and California fire zones. We also offer laminated glass on certain products that are designed specifically for hurricane zones.

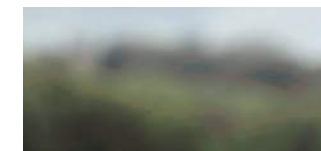
A variety of decorative glass options, including those shown below and others, are available to meet the unique needs of each project. Laminated glass is also available in clear, bronze, gray, or green with tinted interlayers.



FROSTED



BRONZE TINT



GRAY TINT



GREEN TINT



SANDBLASTED



OBSCURE



GLUE CHIP



RAIN



REED



NARROW REED



FLEMISH



AQUALITE



WHITE LAMINATED



BEVELED



V GROOVE



LEADED

Window Hardware

The Marvin Ultimate™ collection's durable and elegant hardware is engineered for reliability and to harmonize with any décor.* Choose a finish to complement your architectural style. Durable painted finishes in Matte Black, Satin Taupe, Bronze, and White mimic the look of metal. Satin Nickel, Brass, Antique Brass, Polished Chrome, Oil Rubbed Bronze, and Satin Chrome offer the rich appearance and durability of authentic metal finishes.



AUTO-LOCKING HARDWARE SYSTEM



Products
Double Hung G2 · Single Hung G2

Finishes
Matte Black · White · Brass · Antique Brass
Bronze · Oil Rubbed Bronze · Polished Chrome
Satin Chrome · Satin Nickel · Satin Taupe

TRADITIONAL LIFT LOCK



Products
Single Hung G2

Finishes
Matte Black · White · Brass · Antique Brass
Bronze · Oil Rubbed Bronze · Polished Chrome
Satin Chrome · Satin Nickel · Satin Taupe

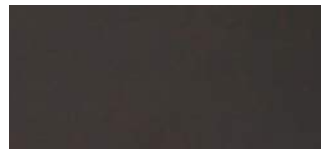
CONTEMPORARY LIFT LOCK



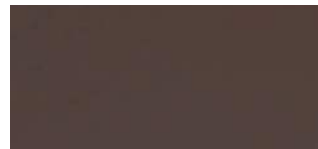
Products
Single Hung G2

Finishes
Matte Black · White · Brass · Antique Brass
Bronze · Oil Rubbed Bronze · Polished Chrome
Satin Chrome · Satin Nickel · Satin Taupe

WINDOW HARDWARE FINISHES



OIL RUBBED BRONZE



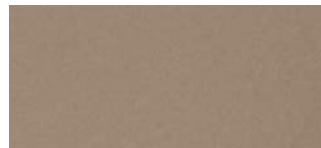
BRONZE



ANTIQUE BRASS



BRASS



SATIN TAUPE



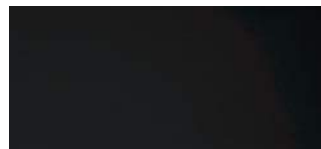
SATIN NICKEL



POLISHED CHROME



SATIN CHROME



MATTE BLACK



WHITE

FOLDING HANDLE



Products
Casement · Casement Narrow Frame
Awning · Awning Narrow Frame

Finishes
Matte Black · White · Brass · Antique Brass
Bronze · Oil Rubbed Bronze · Polished Chrome
Satin Chrome · Satin Nickel · Satin Taupe

PUSH-OUT HANDLE



Products
Casement · Casement Narrow Frame
Awning · Awning Narrow Frame

Finishes
Matte Black · White · Brass · Antique Brass
Oil Rubbed Bronze · Satin Nickel

FOLDING HANDLE



Products
Glider

Finishes
Matte Black · White · Brass · Antique Brass
Bronze · Oil Rubbed Bronze · Polished Chrome
Satin Chrome · Satin Nickel · Satin Taupe

* For more options, visit marvin.com