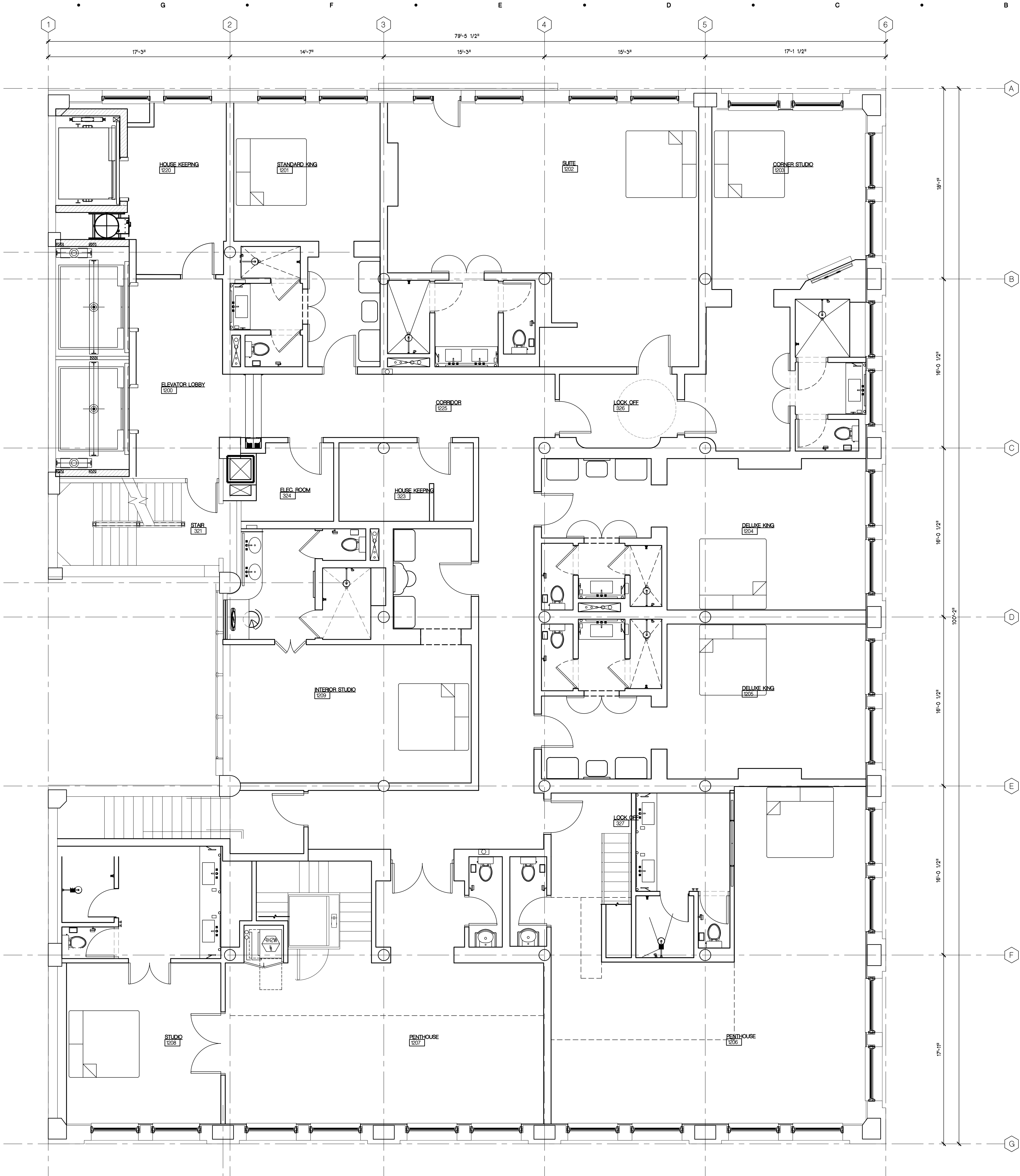


Drawing: P:\2025\25500_2001 Park Ave\50-Drawings\5-CD\SITE PLAN REVIEW\SHA-112.dwg
Date: Nov 05, 2025, 8:19am Layout: A-112 Plotted by: tandenfelde



E1 TWELFTH FLOOR PLAN
SCALE - 1/4"=1'-0"
11/6/25

GENERAL NOTES:

1. ALL DETAILS ARE TYPICAL UNLESS NOTED OTHERWISE.
2. ALL PIPE AND CONDUIT PENETRATIONS THROUGH ANY FLOOR OR WALL SHALL BE SLEEVED AT FLOOR PENETRATIONS SLEEVES SHALL EXTEND 2" MINIMUM ABOVE THE FLOOR LEVEL. TYPICAL FOR MECHANICAL, ELECTRICAL, PLUMBING, AND FIRE PROTECTION ITEMS. SLEEVES SHALL BE SUPPLIED BY MECHANICAL AND ELECTRICAL TRADES.
3. PROVIDE FIRE-RATED FIRESTOPPING AT ALL PENETRATIONS THROUGH SUPPORTED FLOORS AND FIRE-RATED PARTITIONS/WALLS. PROVIDE FIRESTOPPING SYSTEMS UTILIZING FM APPROVED MATERIALS.
4. PROVIDE CONTROL JOINTS IN ACCORDANCE WITH MANUFACTURERS RECOMMENDATIONS AT ALL MATERIALS, AND AS ACCEPTABLE TO ARCHITECT. CONTRACTOR TO NOTIFY ARCHITECT IF CONTROL JOINTS ARE LOCATED IN ADDITION TO WHAT IS SHOWN ON THE DRAWINGS PRIOR TO INSTALLATION.

Sheet Size - 30x42
© Copyright 2025 Hobbs+Black Associates, Inc.
ALL RIGHTS RESERVED

DESIGN DEVELOPMENT 06/27/2025
DATE ISSUED
AJP
DRAWN BY
MW
CHECKED BY

HOBBS + BLACK
ARCHITECTS

100 N. State St.
Ann Arbor, MI 48104
P. 734.663.4189
www.hobbs-black.com

**PARK AVENUE
BUILDING**

2001 PARK AVENUE
DETROIT MICHIGAN

PROJECT

CONSULTANT

TWELFTH FLOOR
PLAN

SHEET TITLE

25-500

PROJECT NUMBER

A-112

SHEET NUMBER