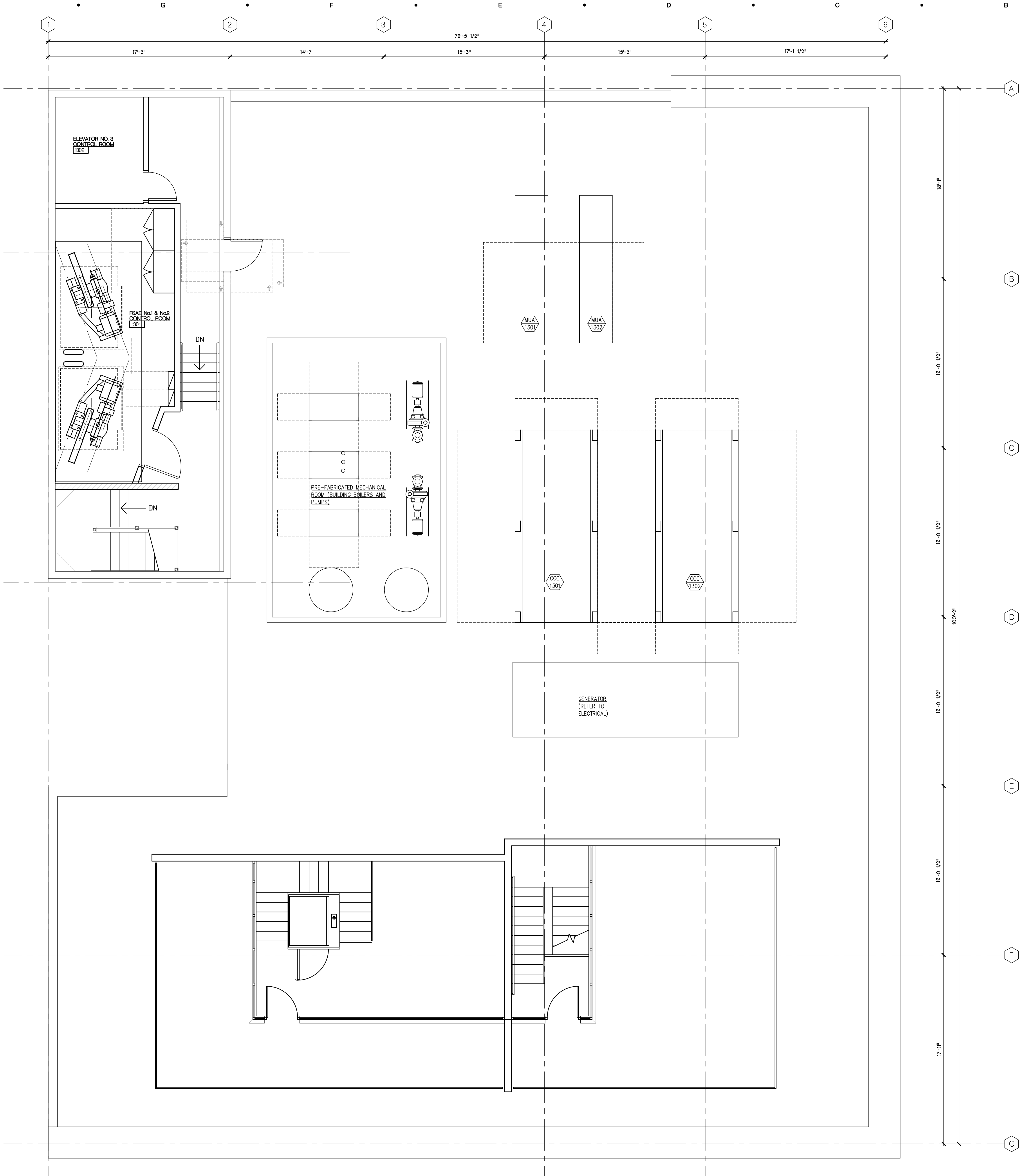


Drawing: P:\2025\25500-2001 Park Ave\50-Drawings\3-CDS\ITE PLAN REVIEW\SHA113.dwg  
Date: Nov 05, 2025, 9:04am Layout: A-113 Plotted by: hvdnelds



E1  
A-113  
ROOF PLAN  
SCALE - 1/4"=1'-0"  
11/6/2025

## GENERAL NOTES:

- ALL DETAILS ARE TYPICAL UNLESS NOTED OTHERWISE.
- ALL PIPE AND CONDUIT PENETRATIONS THROUGH ANY FLOOR OR WALL SHALL BE SLEEVED AT FLOOR PENETRATIONS SLEEVES SHALL EXTEND 2" MINIMUM ABOVE THE FLOOR LEVEL TYPICAL FOR MECHANICAL, ELECTRICAL, PLUMBING, AND FIRE PROTECTION ITEMS. SLEEVES SHALL BE SUPPLIED BY MECHANICAL AND ELECTRICAL TRADES.
- PROVIDE FIRE-RATED FIRESTOPPING AT ALL PENETRATIONS THROUGH SUPPORTED FLOORS AND FIRE-RATED PARTITIONS/WALLS. PROVIDE FIRESTOPPING SYSTEMS UTILIZING FM APPROVED MATERIALS.
- PROVIDE CONTROL JOINTS IN ACCORDANCE WITH MANUFACTURERS RECOMMENDATIONS AT ALL MATERIALS, AND AS ACCEPTABLE TO ARCHITECT. CONTRACTOR TO NOTIFY ARCHITECT IF CONTROL JOINTS ARE LOCATED IN ADDITION TO WHAT IS SHOWN ON THE DRAWINGS PRIOR TO INSTALLATION.

Sheet Size - 30x42  
© Copyright 2025 Hobbs+Black Associates, Inc.  
ALL RIGHTS RESERVED

DESIGN DEVELOPMENT 06/27/2025  
DATE ISSUED  
AVP  
DRAWN BY  
MWV  
CHECKED BY

**HOBBS + BLACK**  
ARCHITECTS  
100 N. State St.  
Ann Arbor, MI 48104  
P. 734.663.4189  
www.hobbs-black.com

**PARK AVENUE  
BUILDING**  
2001 PARK AVENUE  
DETROIT MICHIGAN

PROJECT

CONSULTANT

ROOF  
PLAN

SHEET TITLE

25-500  
PROJECT NUMBER

A-113  
SHEET NUMBER