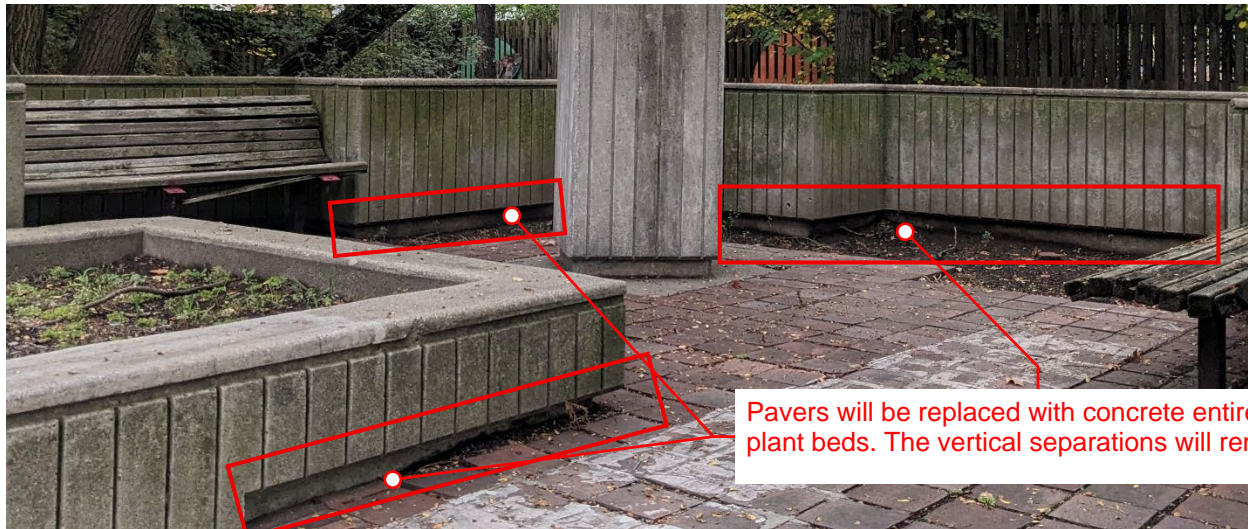


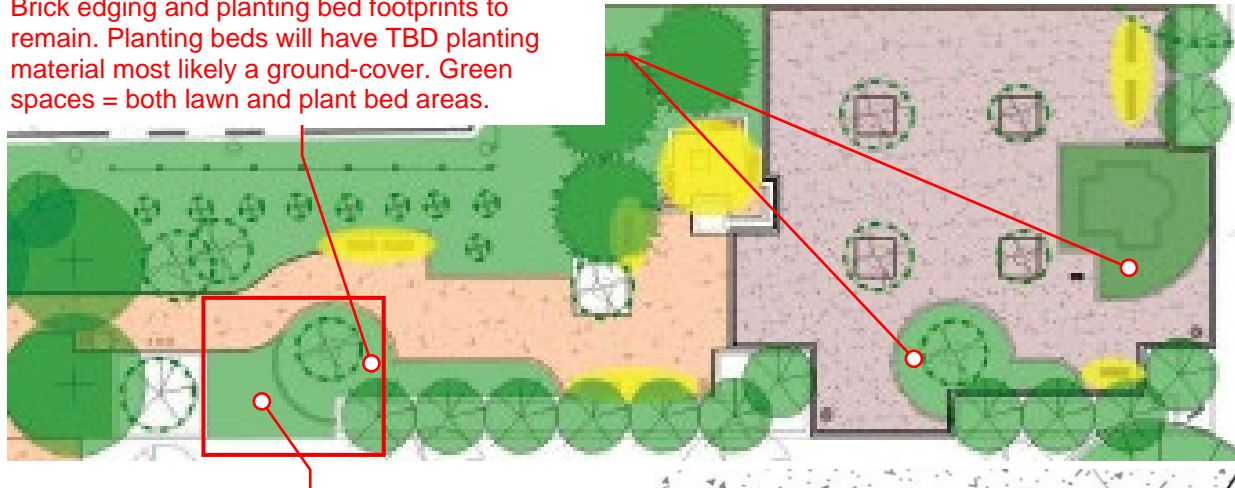
At the bust, will the platform retain its footprint once the brick pavers are replaced with concrete? There is currently a separation between the vertical concrete elements, and the floor surface, giving a sort of floating illusion. Can you confirm that this feature will remain?



Pavers will be replaced with concrete entirely; no plant beds. The vertical separations will remain.

I saw that you highlighted the areas with brick edging as proposed greenspace. Does this imply the brick will be surrounded by grass? How will this be maintained over time?

Brick edging and planting bed footprints to remain. Planting beds will have TBD planting material most likely a ground-cover. Green spaces = both lawn and plant bed areas.

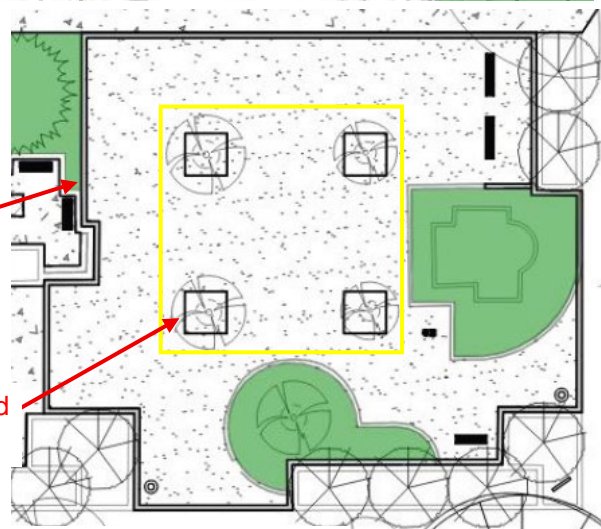


Planting bed/brick edging will be adjacent to and surrounded by grass which will be mowed regularly

What do these lines imply? Please specify the material. 1' wide brushed concrete edge

Please reconfirm material designated for the main ground surface, as well as the material for the continued pathway: Plaza area is a compacted crushed limestone surface and other pathways will be concrete

Please confirm materiality of all borders, including these tree openings



The lines bordering the trees are a drawing error; the plaza will be a compacted crushed limestone surface bordered by brushed concrete edge as specified in package and remaining surfaces in the park will be concrete