



City of Detroit - Planning & Development Department  
2 Woodward Avenue, Suite 808  
Detroit, Michigan 48226

# HISTORIC DISTRICT COMMISSION ADDITIONAL INFORMATION REQUEST

**Date:** 07/22/25

**Application Number:** HDC2025-00464

## APPLICANT & PROPERTY INFORMATION

**NAME:** Raymond Sinclair

**COMPANY NAME:** The Home Depot

**ADDRESS:** 13121 Waco Drive

**CITY:** Livonia

**STATE:** MI

**ZIP:** 48150

**PROJECT ADDRESS:** 2025 Orleans Street

**HISTORIC DISTRICT:** Lafayette Park/Mies van der Rohe

## REQUESTED INFORMATION

We have received your application, but it is not yet complete for review. Please provide additional details based on the comments and questions listed below. Should you need to attach additional files per this request, use the paperclip icons at the end of this form. You may attach up to (5) files per icon up to 25MB:

Thank you for the resubmission.

HDC staff needs to compare the width, depth, and size of the window components with your proposed replacements. This means we will need detailed dimensions at all jams, sills, muntins, header, etc.

Please note that without this information, we cannot move forward with your application.

We look forward to hearing from you.

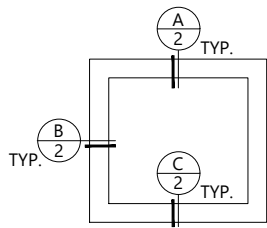
## APPLICANT RESPONSE

Response Date: 08/14/2025

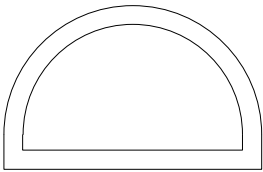


See attached

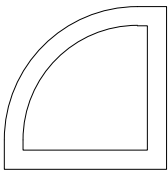
100 Series  
Single Transom/Picture/Specialty  
Insert



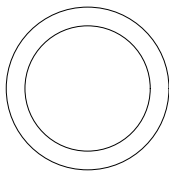
Rectangle



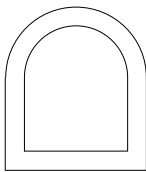
Half Circle



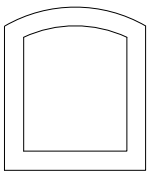
Quarter Circle



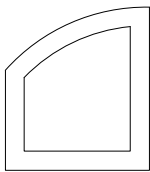
Circle



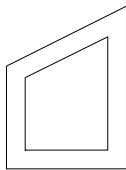
Springline



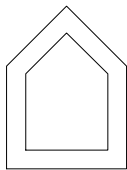
Arch



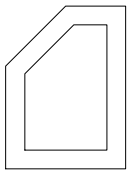
Custom  
Unequal Leg Archtop



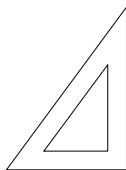
Custom  
Trapezoid



Custom  
Peak Pentagon



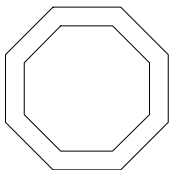
Custom  
Angled Pentagon



Custom  
Right Triangle



Custom  
Isosceles Triangle

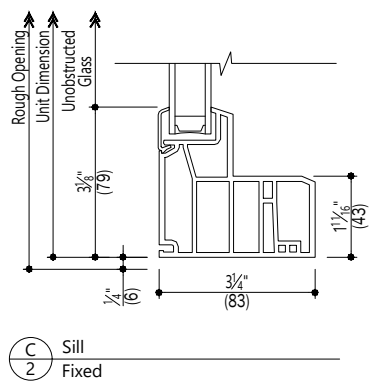
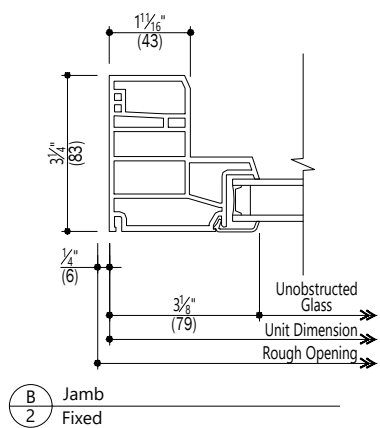
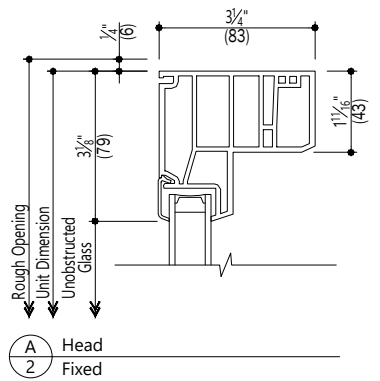


Custom  
Octagon

Scale: None

**Notes:**  
Details have been optimized for use in architectural software and do not match manufacturing specifications.  
Dimensions in parentheses are in millimeters.  
Andersen Windows, Inc. reserves the right to change drawing specifications without notice.

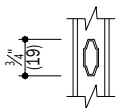
100 Series  
Single Transom/Picture/Specialty  
Insert



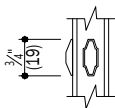
Scale: 3" (76) = 1' (305)

Notes:  
Details have been optimized for use in architectural software and do not match manufacturing specifications.  
Dimensions in parentheses are in millimeters.  
Andersen Windows, Inc. reserves the right to change drawing specifications without notice.

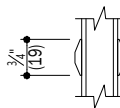
100 Series  
Single Transom/Picture/Specialty  
Insert



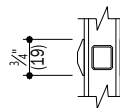
A 3 3/4" Finelight Grille



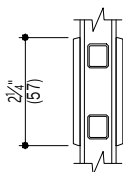
B 3/4" Finelight w/ Exterior Grilles



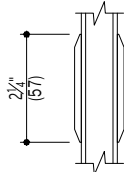
C 3/4" Simulated Divided Light Grille



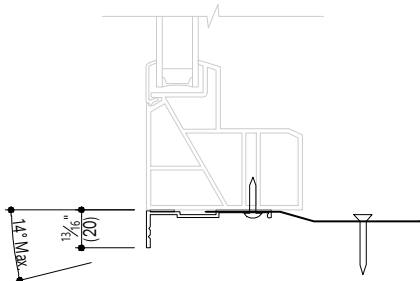
D 3/4" Full Divided Light Grille



E 2 1/4" Full Divided Light Grille  
Simulated Check Rail  
Rectangular Units Only



F 2 1/4" Simulated Divided Light Grille  
Simulated Check Rail  
Rectangular Units Only



G Sloped Sill Adapter  
Field Applied Only

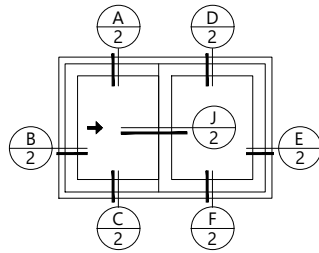
Scale: 3" (76) = 1' (305)

**Notes:**  
Details have been optimized for use in architectural software and do not match manufacturing specifications.  
Dimensions in parentheses are in millimeters.  
Andersen Windows, Inc. reserves the right to change drawing specifications without notice.

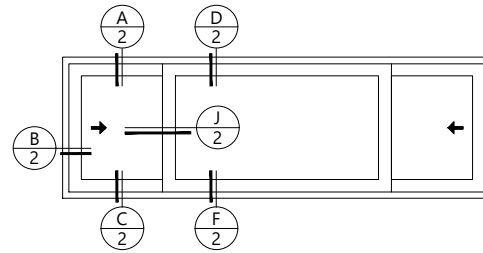
Date: 06/28/24

# 100 Series

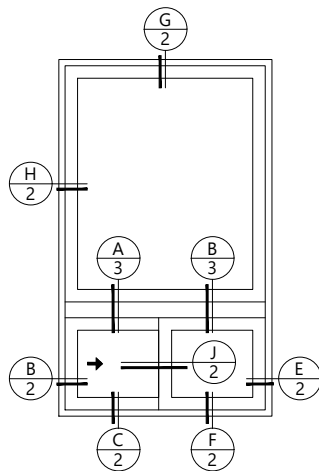
## Gliding Window Insert



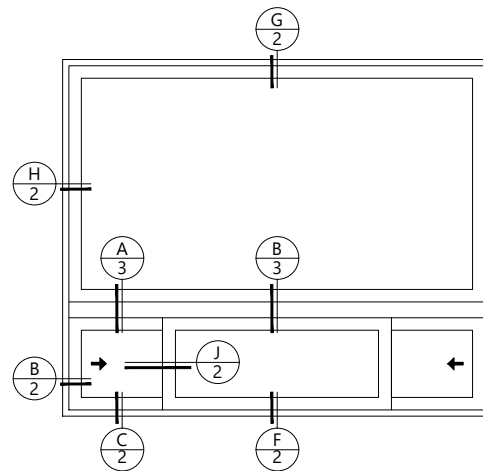
Gliding Window - XO/OX



Gliding Window - XOX



Picture Window over  
Gliding Window - XO/OX



Picture Window over  
Gliding Window - XOX

Scale: None

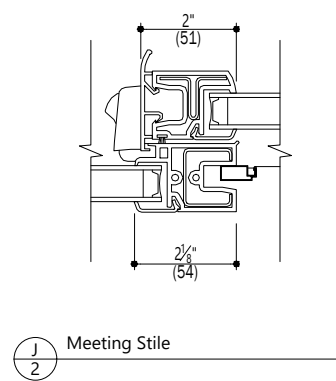
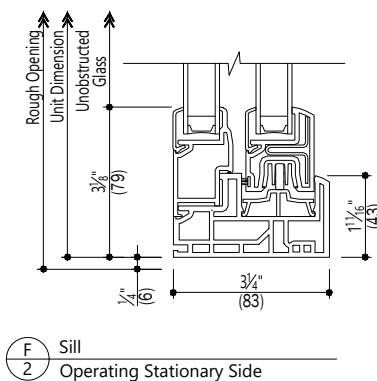
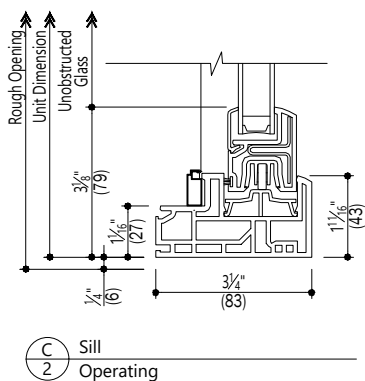
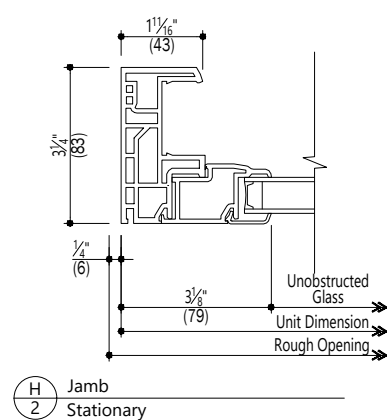
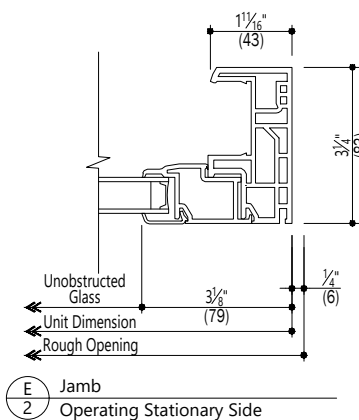
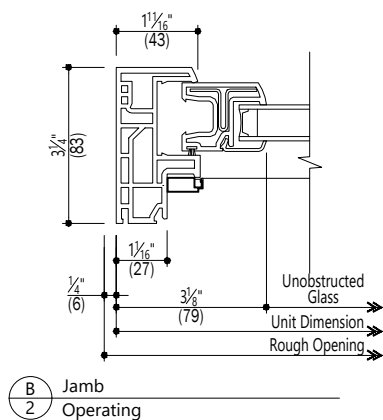
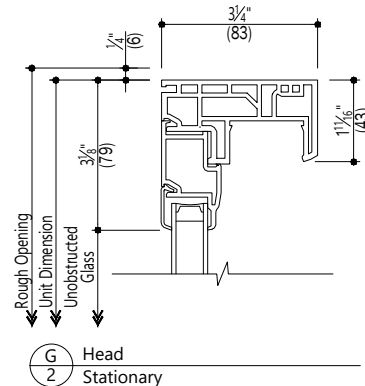
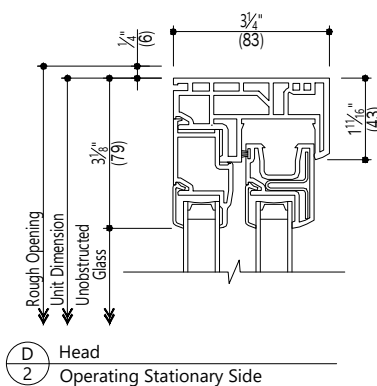
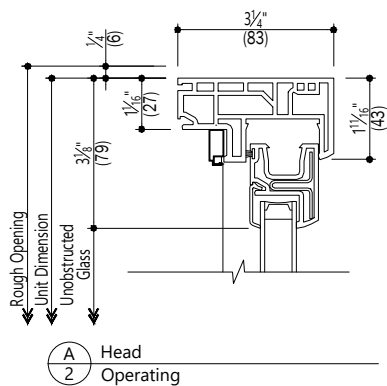
### Notes:

Details have been optimized for use in architectural software and do not match manufacturing specifications.  
Dimensions in parentheses are in millimeters.  
Andersen Windows, Inc. reserves the right to change drawing specifications without notice.

Date: 06/28/24

# 100 Series

## Gliding Window Insert

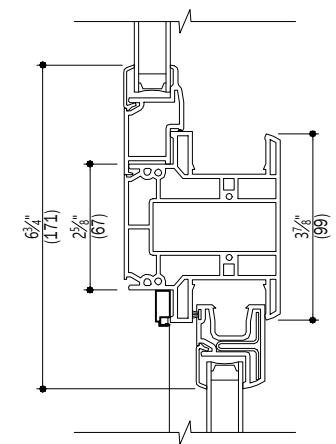


### Notes:

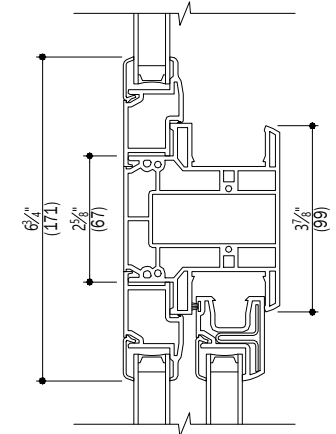
Details have been optimized for use in architectural software and do not match manufacturing specifications.  
Dimensions in parentheses are in millimeters.  
Andersen Windows, Inc. reserves the right to change drawing specifications without notice.

Scale: 3" (76) = 1' (305)

100 Series  
Gliding Window  
Insert



A  
3 Horizontal Integral Join  
Stationary /Operating



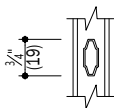
B  
3 Horizontal Integral Join  
Stationary/Operating Stationary Side

Scale: 3" (76) = 1' (305)

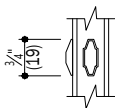
Notes:  
Details have been optimized for use in architectural software and do not match manufacturing specifications.  
Dimensions in parentheses are in millimeters.  
Andersen Windows, Inc. reserves the right to change drawing specifications without notice.



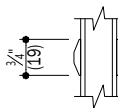
100 Series  
Gliding Window  
Insert



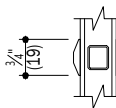
A 3/4" Finelight Grille



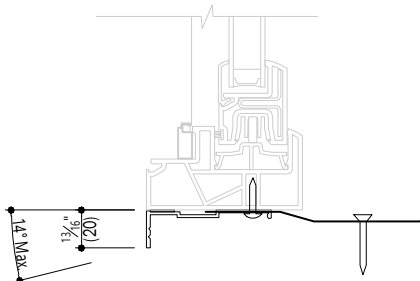
B 3/4" Finelight w/ Exterior Grilles



C 3/4" Simulated Divided Light Grille



D 3/4" Full Divided Light Grille



E Sloped Sill Adapter  
Field Applied Only

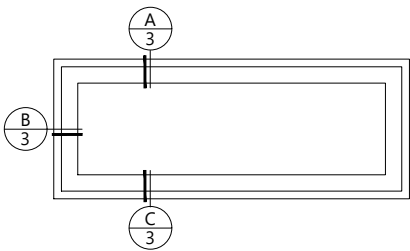
Scale: 3" (76) = 1' (305)

Notes:

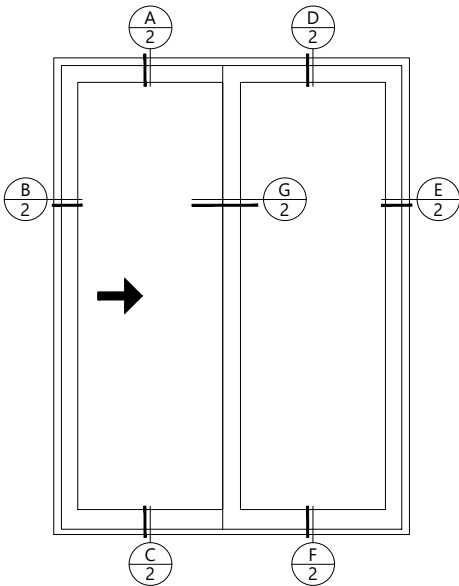
Details have been optimized for use in architectural software and do not match manufacturing specifications.  
Dimensions in parentheses are in millimeters.  
Andersen Windows, Inc. reserves the right to change drawing specifications without notice.

Date: 06/28/24

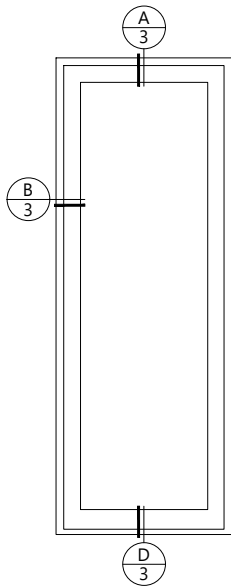
100 Series  
Gliding Patio Door  
No Flange



Gliding Patio Door Transom



Gliding Patio Door



Gliding Patio Door Sidelight

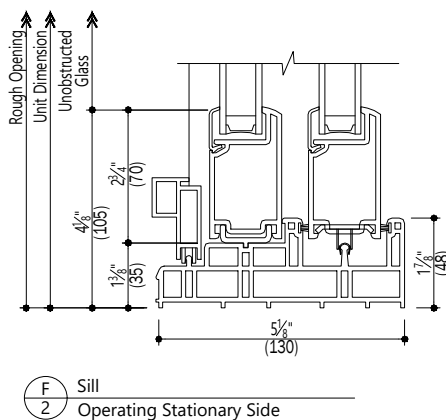
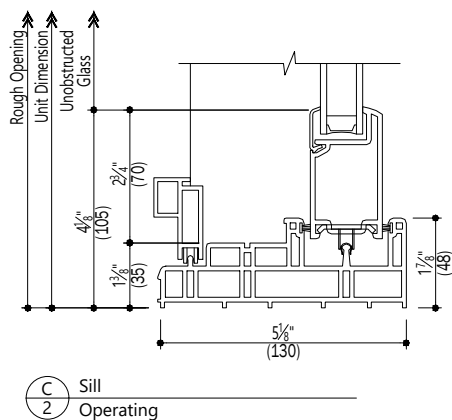
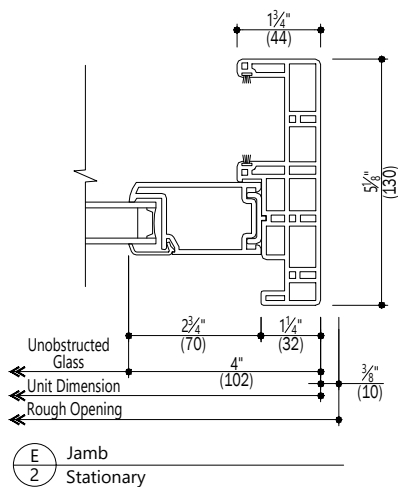
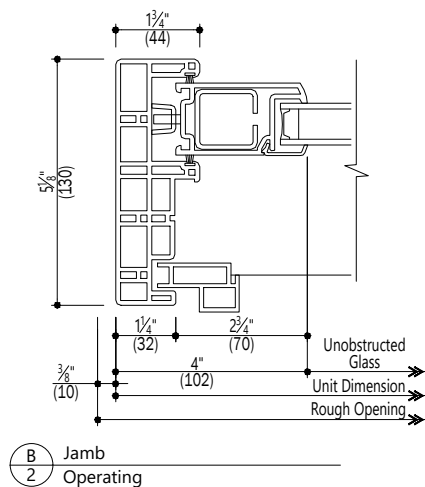
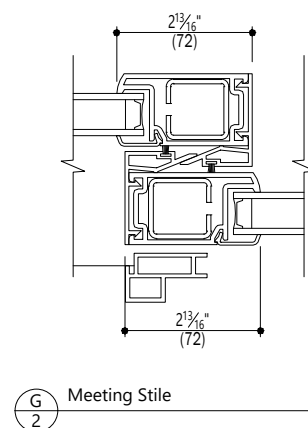
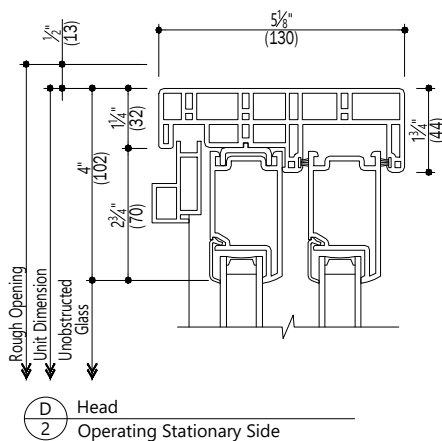
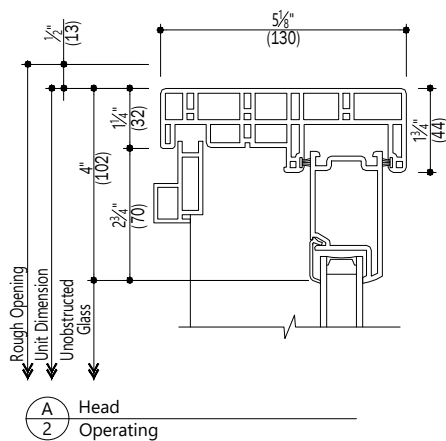
Scale: None

**Notes:**  
Details have been optimized for use in architectural software and do not match manufacturing specifications.  
Dimensions in parentheses are in millimeters.  
Andersen Windows, Inc. reserves the right to change drawing specifications without notice.

# 100 Series

## Gliding Patio Door

### No Flange



#### Notes:

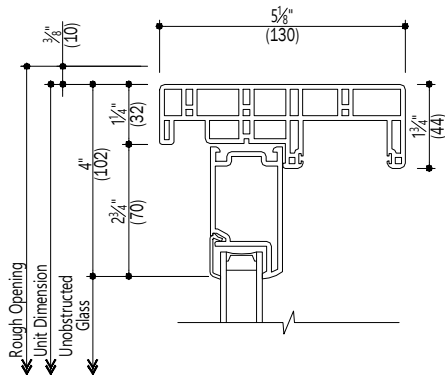
Details have been optimized for use in architectural software and do not match manufacturing specifications.  
Dimensions in parentheses are in millimeters.  
Andersen Windows, Inc. reserves the right to change drawing specifications without notice.

Scale: 3" (76) = 1' (305)

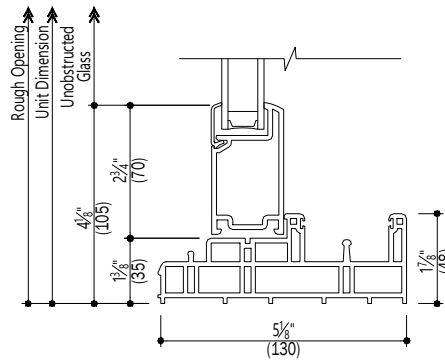
# 100 Series

## Gliding Patio Door

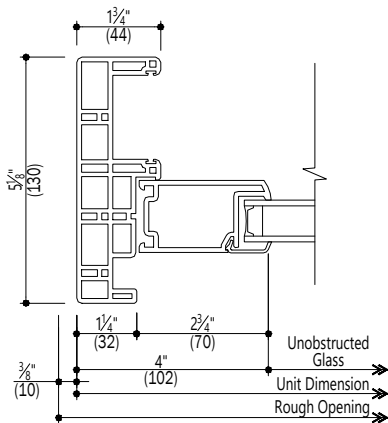
### No Flange



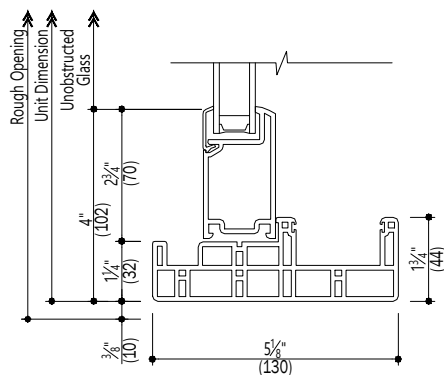
**A** Head  
3 Transom / Sidelight



**D** Sill  
3 Sidelight



**B** Jamb  
3 Transom / Sidelight



**C** Sill  
3 Transom

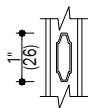
**Scale: 3" (76) = 1' (305)**

#### Notes:

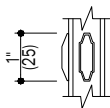
Details have been optimized for use in architectural software and do not match manufacturing specifications.  
Dimensions in parentheses are in millimeters.  
Andersen Windows, Inc. reserves the right to change drawing specifications without notice.

Date: 06/28/24

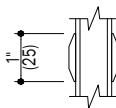
100 Series  
Gliding Patio Door  
No Flange



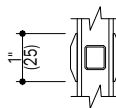
A 1" Finelight Grille



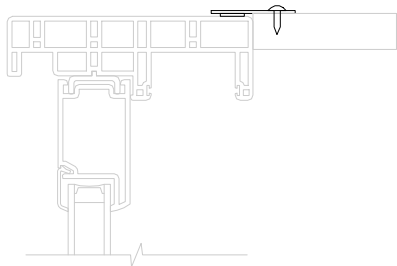
B 1" Finelight w/ Exterior Grilles



C 1" Simulated Divided Light Grille



D 1" Full Divided Light Grille



E Extension Jamb Attachment Strip  
Field Applied Only

Scale: 3" (76) = 1' (305)

Notes:  
Details have been optimized for use in architectural software and do not match manufacturing specifications.  
Dimensions in parentheses are in millimeters.  
Andersen Windows, Inc. reserves the right to change drawing specifications without notice.