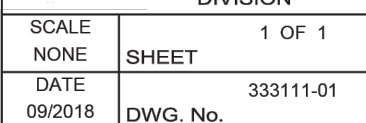
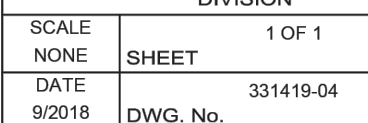


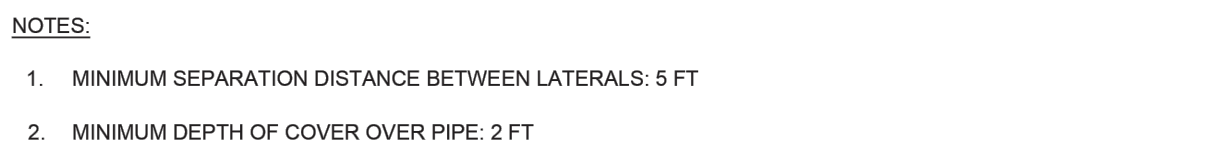
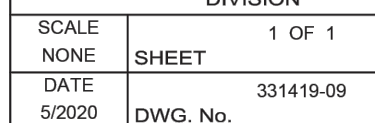
CONNECTION,
SADDLE TO
LATERAL SEWER



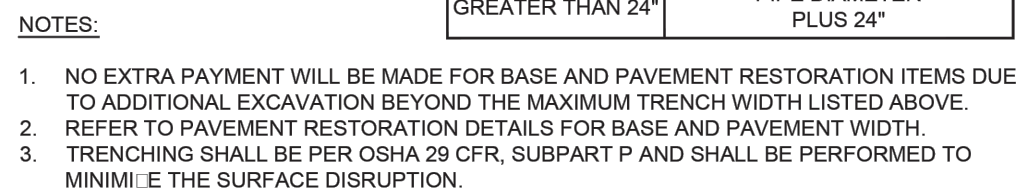
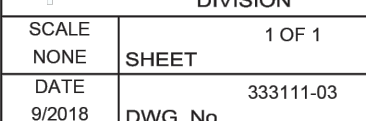
VALVE BOX INSTALLATION



CONCRETE
VALVE BOX
COLLAR

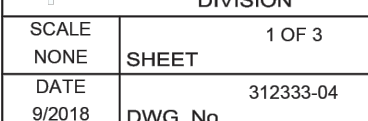


CLEANOUT



STANDARD TRENCH DETAIL FOR WATER MAIN
UNDER ROAD BED, PARKING LOTS, SIDEWALKS,
DRIVEWAYS, CURBS, GRAVEL ROADS AND ALLEYS

UTILITY TRENCH,
WATER MAIN



A circular professional engineer seal for the State of Michigan. The outer ring contains the text "STATE OF MICHIGAN" at the top and "LICENSED PROFESSIONAL ENGINEER" at the bottom, separated by two stars. The center of the seal contains the name "BRUCE A. WALLIN" in a stylized script font, with the license number "6241047392" printed below it.

For protection of underground utilities, the CONTRACTOR shall dial 1-800-482-7171 OR 811 a minimum of three working days, excluding Saturdays, Sundays and holidays, prior to excavation in the vicinity of utility lines. All "MISS DIG" participating members will thus be routinely notified. This does not relieve the CONTRACTOR of the responsibility of notifying the utility owners who may not be part of the "MISS DIG" alert system.

DATE OF PLAN: 07-31-25

X-SECTIONS, NOTES, AND DETAILS

BELLIS@FSPARCH.COM

calen
civil engineers

NO.	ISSUANCE / REVISION	BY	DATE
1.	SITE PLAN REVIEW	B.A.C.	07/31/26

DRAWN BY L.B.C.	DATE JULY '2
ENGINEER B.A.C.	DATE JULY '2
EDIT L.B.C.	DATE JULY'25

SCALE	
DRAWING	PLOT SCALE
AS NOTED	1:1

PROJECT	025 BUTZ
---------	----------

SHEET NO.
C4.1