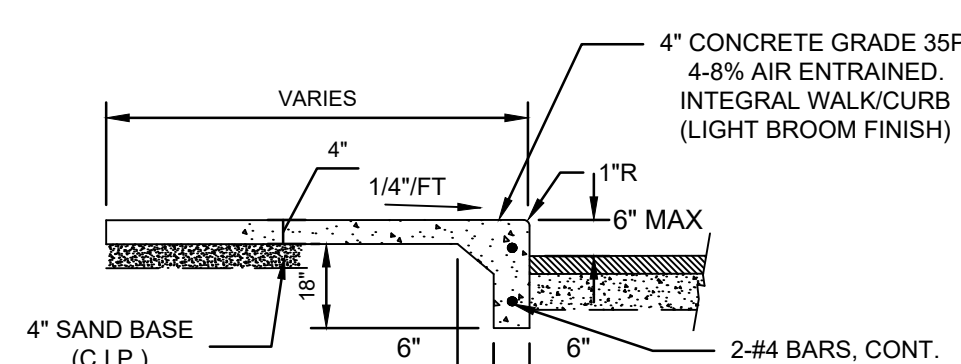
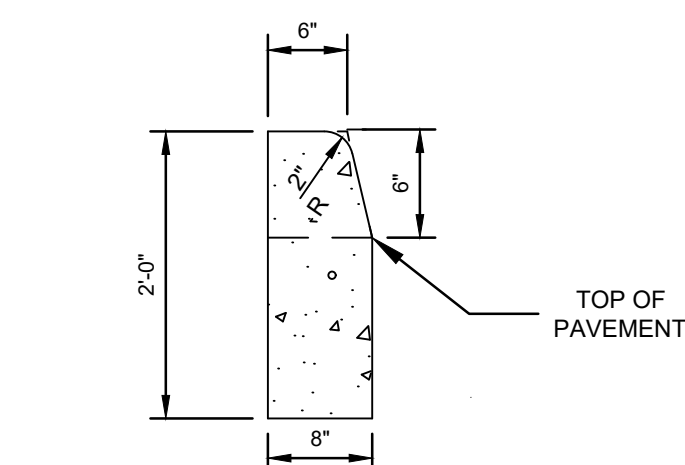


NOTE: 1) PROVIDE 3/8" EXPANSION JOINT
WHERE WALK MEETS BUILDING
2) PROVIDE CONTROL JOINTS AT 6' O/C



NOTE: 1) PROVIDE 3/8" EXPANSION JOINT
WHERE WALK MEETS BUILDING
2) PROVIDE CONTROL JOINTS AT 6' O/C

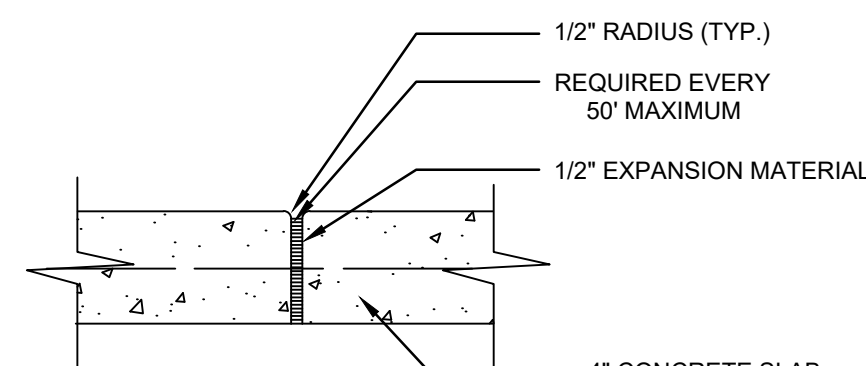


CONCRETE CURB & GUTTER

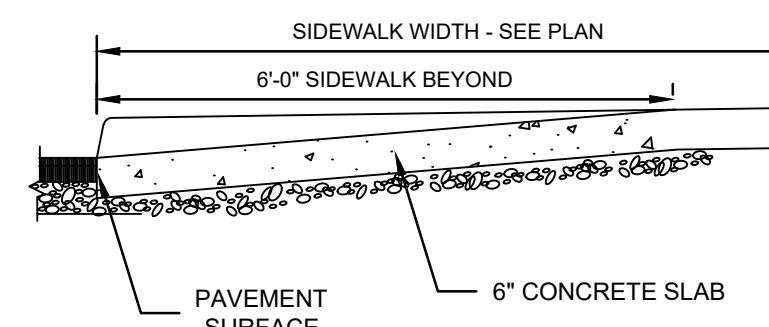
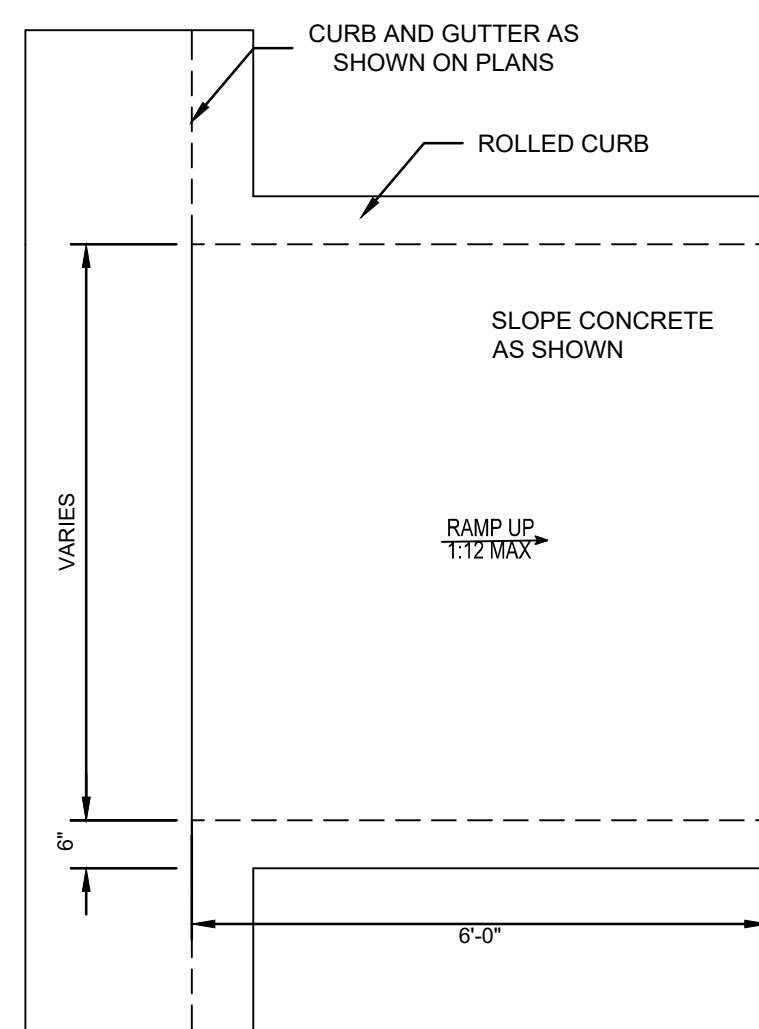
CG-E2

DETAIL E2

NO SCALE



WALK EXPANSION JOINT (SW-EJ)

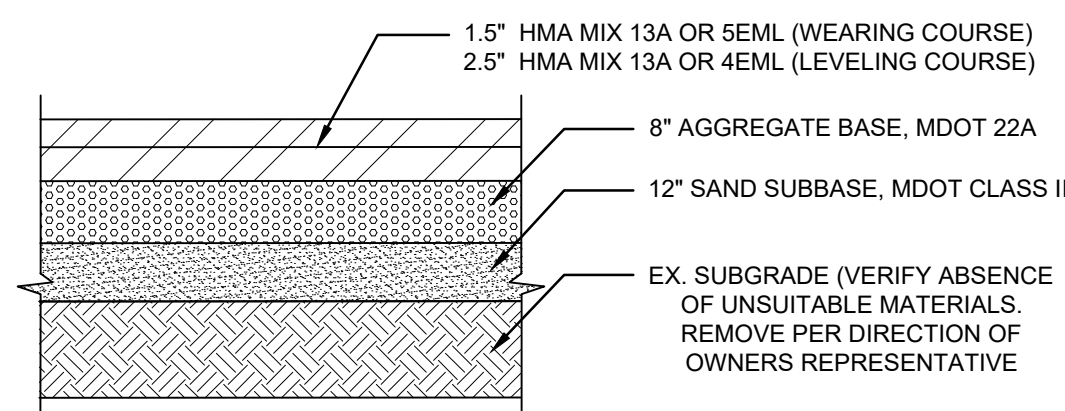
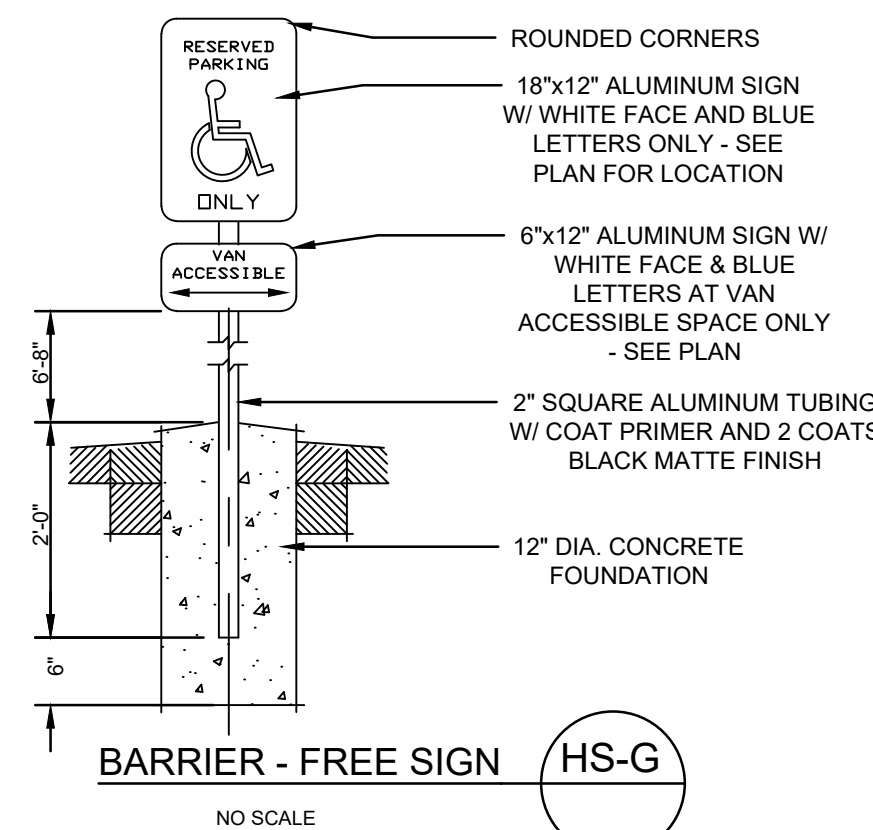


B.F. RAMP DETAIL

TYPE R

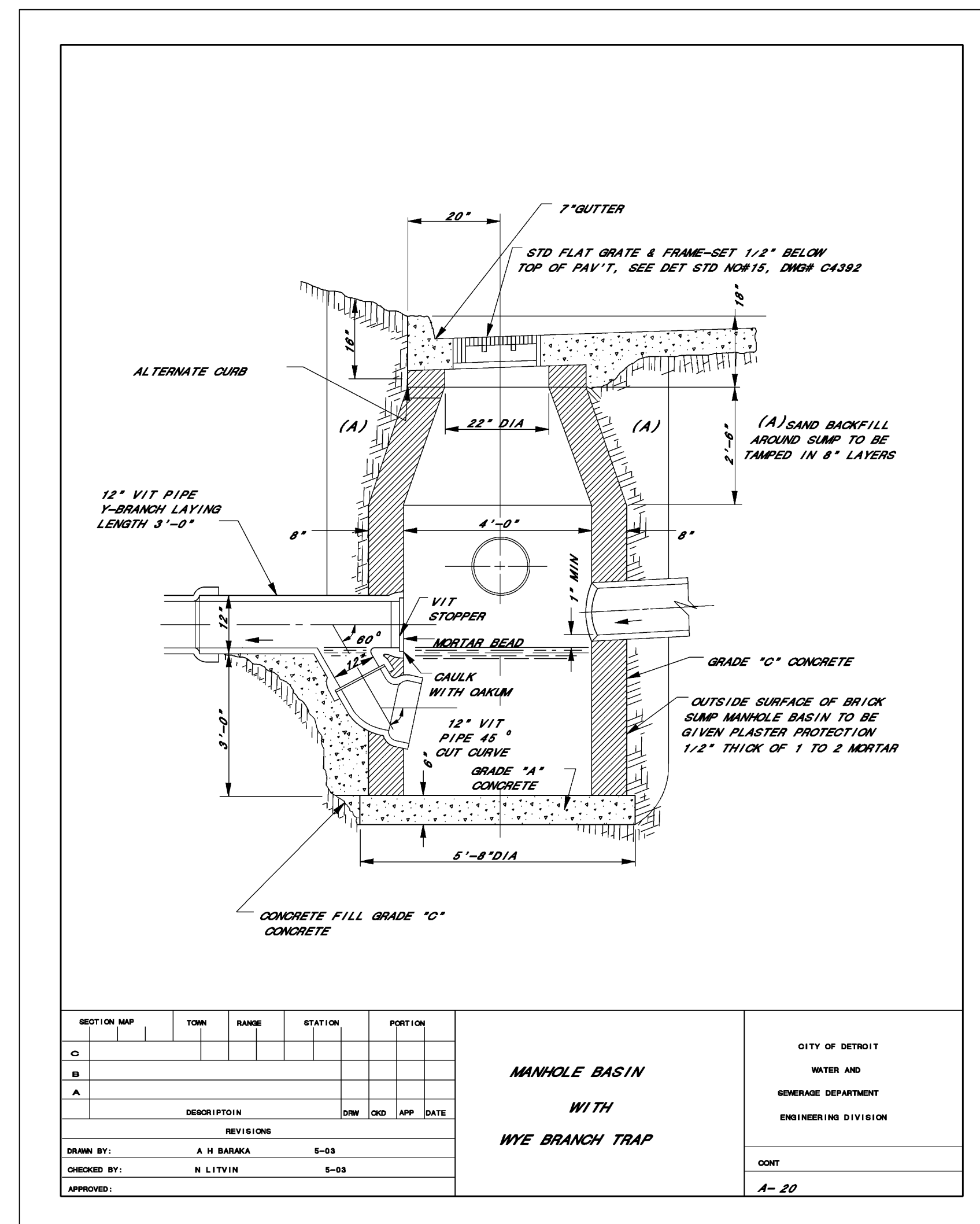
NO SCALE

HC-R2



NOTE: CONTRACTOR(S) SHALL FAMILIARIZE THEMSELVES WITH THE INFORMATION AND FINDINGS PRESENTED IN THE GEOTECHNICAL EVALUATION REPORT PREPARED BY _____

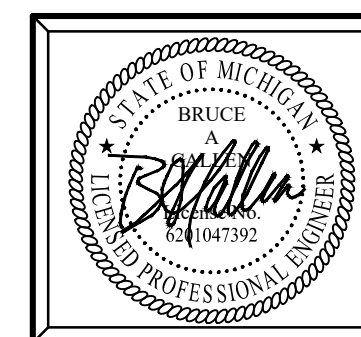
HMA PAVEMENT SECTION HMA



PRELIMINARY - NOT FOR CONSTRUCTION



Know what's **below.**
Call before you dig.



Plan Prepared By:

Bruce A. Callen, PE
Callen Engineering, Inc.
108 E. Savidge St.
Spring Lake, Michigan 49456

Tel: 616-414-5260
email: bcallen@callenengineering.com

For protection of underground utilities, the CONTRACTOR shall dial 1-800-482-7171 OR 811 a minimum of three working days, excluding Saturdays, Sundays and holidays, prior to excavation in the vicinity of utility lines. All "MISS DIG" participating members will thus be routinely notified. This does not relieve the CONTRACTOR of the responsibility of notifying the utility owners who may not be part of the "MISS DIG" alert system.

DATE OF PLAN: 07-31-25

Callen Engineering, Inc.
108 East Savidge Street
Spring Lake, MI 49456
T.616.414.5260
www.callenengineering.com

callen
civil engineers

FUSCO, SHAFFER & PAPPAS, INC

550 E. NINE MILE ROAD
FERNDALE, MI 48220
BELLIS@FSPARCH.COM

NO.	ISSUANCE / REVISION	BY	DATE
1.	SITE PLAN REVIEW	B.A.C.	07/31/25

7737 KERCHEVAL
A PROPOSED MIXED USE DEVELOPMENT
CITY OF DETROIT, MI 48202
WAYNE COUNTY, MICHIGAN

X-SECTION, NOTES, AND DETAILS

DRAWN BY L.B.C.	DATE JULY '2
ENGINEER B.A.C.	DATE JULY '2
EDIT L.B.C.	DATE JULY'25
SCALE	
DRAWING	PLOT SCALE
AS NOTED	1:1

PROJECT	025 BUTZEL INFILL
---------	----------------------

SHEET NO.
C4.0