



# HISTORIC DISTRICT COMMISSION APPLICATION FOR WORK APPROVAL

City of Detroit - Planning & Development Department  
2 Woodward Avenue, Suite 808  
Detroit, Michigan 48226

## APPLICATION ID

HDC2025-00489

## PROPERTY INFORMATION

**ADDRESS(ES):** 2733 2nd Ave

**HISTORIC DISTRICT:** Cass Park

## SCOPE OF WORK: (Check ALL that apply)

- |  |   |  |   |  |                                |
|--|---|--|---|--|--------------------------------|
| <input type="checkbox"/> Windows/<br>Doors | <input type="checkbox"/> Walls/<br>Siding | <input type="checkbox"/> Painting        | <input type="checkbox"/> Roof/Gutters/<br>Chimney | <input type="checkbox"/> Porch/Deck/Balcony  | <input type="checkbox"/> Other |
| <input type="checkbox"/> Demolition        | <input type="checkbox"/> Signage          | <input type="checkbox"/> New<br>Building | <input type="checkbox"/> Addition                 | <input checked="" type="checkbox"/> Site Improvements<br>(landscape, trees, fences,<br>patios, etc.) |                                |

## BRIEF PROJECT DESCRIPTION:

The proposed improvements to Cass Park are intended to enhance the existing use of the park and provide more opportunities for play, enjoyment, and social interaction in the park. These improvements include replacing the old deteriorated walks, removal of invasive trees and planting additional trees, reintroducing play elements, benches and picnic tables that historically were in the park and replacing the old fitness equipment. The redesign of Cass Park involved extensive community engagement. Stakeholders and residents expressed what they would like to see in the park and the proposed design reflects that input as well as ensuring it meets modern needs, while respecting the history of the park.

## APPLICANT IDENTIFICATION

**TYPE OF APPLICANT:** Property Owner/Homeowner

**NAME:** Rayshaun Landrum

**COMPANY NAME:** General Services Dept, City of Detroit

**ADDRESS:** 115 Erskine St

**CITY:** Detroit

**STATE:** MI

**ZIP:** 48201

**PHONE:** +1 (313) 236-6150

**EMAIL:** landrumr@detroitmi.gov

## I AGREE TO AND AFFIRM THE FOLLOWING:

- ☒ I understand that the failure to upload all required documentation may result in extended review times for my project and/or a denied application.
- ☒ I understand that the review of this application by the Historic District Commission does not waive my responsibility to comply with any other applicable ordinances including obtaining appropriate permits (building, sign, etc.) or other department approvals prior to beginning the work.
- ☒ I hereby certify that I am the legal owner and/or occupant of the subject property and that the information on this application is true and correct.

DocuSigned by:

Rayshaun Landrum

General Services Dept, City of Detroit

*Rayshaun Landrum*

07/21/2025

SIGNATURE

115 Erskine St

DATE

Detroit

MI 48201

+1 (313) 236-6150

landrumr@detroitmi.gov

Questions? Contact us at [hdc@detroitmi.gov](mailto:hdc@detroitmi.gov) or (313)224-1762

**NOTE: Based on the scope of work, additional documentation may be required. See [www.detroitmi.gov/hdc](http://www.detroitmi.gov/hdc) for scope-specific requirements.**

## PROJECT DETAILS – TELL US ABOUT YOUR PROJECT

**Instructions: Add project details using the text box in each section. If your details exceed the space provided, attach the details via the attachment icon for that section.**

### ePLANS PERMIT NUMBER:

(only applicable if you've already applied for permits through ePLANS)

N/A

## GENERAL

### 1. DESCRIPTION OF EXISTING CONDITION

*Please tell us about the current appearance and conditions of the areas you want to change. You may use a few sentences or attach a separate prepared document on the right. (For example, "existing roof on my garage is covered in gray asphalt shingles in poor condition.")*

See attached Package (PDF), uploaded under Site Improvements.

### 2. PHOTOGRAPHS

*Help us understand your project. Please attach photographs of all areas where work is proposed.*



### 3. DESCRIPTION OF PROJECT

*In this box, tell us about what you want to do at the areas described above in box #1. (For example, "Install new asphalt shingle roofing at garage.")*

See attached Package (PDF), uploaded under Site Improvements.

### 4. DETAILED SCOPE OF WORK

*In this box, please describe all steps necessary to complete the work described in box #3. (For example, "remove existing shingles, replace wood deck as necessary, replace wood eaves, install roof vents, replace rotted fascia boards, paint, clean worksite.")*


See attached Package (PDF), uploaded under Site Improvements.

### 5. BROCHURES/CUT SHEETS

*Please provide information on the products or materials you are proposing to install. For example, a brochure on the brand and color of the shingles proposed.*



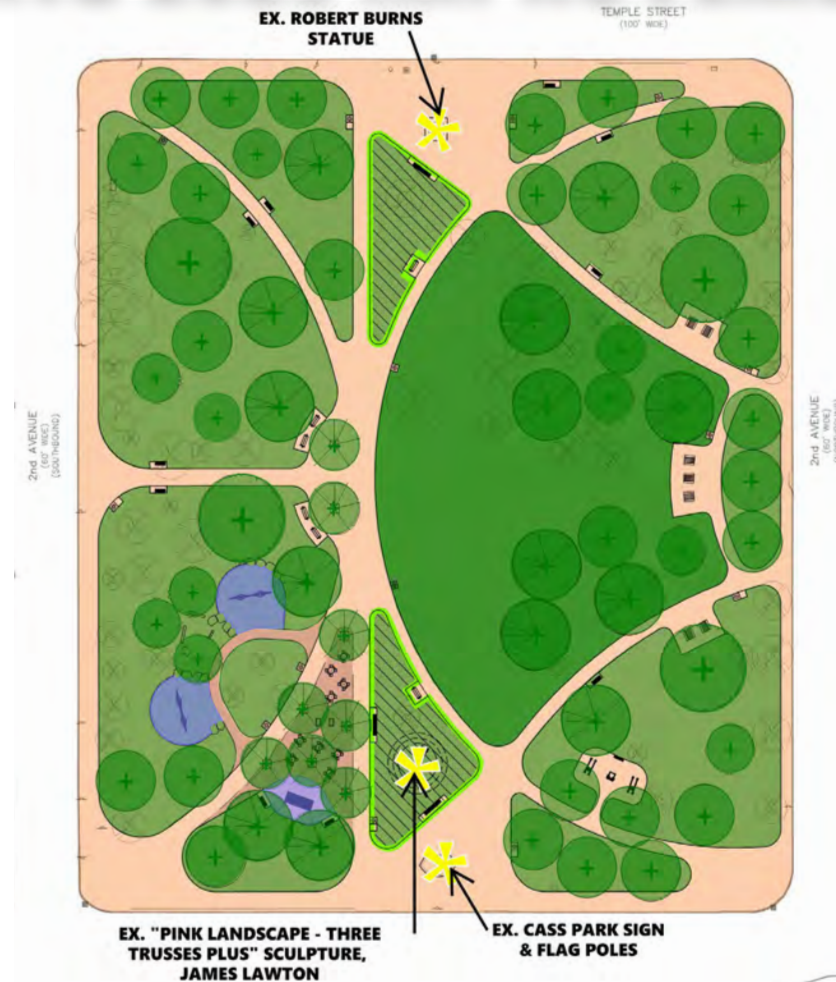
ADDITIONAL DETAILS

<div>8. SITE IMPROVEMENTS</div> <div>If site improvements are proposed, please provide any relevant site improvement plans pertaining to your project.</div>	<div></div>

# CASS PARK

## (2733 2ND AVE)

### SPRING 2026 IMPROVEMENTS



**HISTORIC DISTRICT COMMISSION**  
**AUGUST 13, 2025**



GENERAL SERVICES DEPARTMENT  
**Parks & Recreation**  
Division



TABLE OF CONTENTS

• Historic Significance Considerations	3	• Proposed Seating	20
• Project Description	4	• Proposed Drinking Fountain	21
• Cass Park Community Engagement	5	• Cass Park Arborist Tree Survey	22
• Cass Park 1860 Historical Plan	6	• Proposed Trees and Landscaping	23
• Cass Park 1934 Historical Plan	7	• Proposed Tree Selection	24
• Cass Park 1978 Historical Plan	8	• Proposed Landscaping Selection	25
• Existing Park Conditions	9	• Proposed Tree Grates	26
• Cass Park 2025 Proposed Entries and Paths	10	• Park Signage	27
• Cass Park 2024 Proposed Plan	11	• Cass Park 2025 Proposed Plan	28
• Cass Park Historical Features	12	• Scope of Work and Cut Sheet	29
• Cass Park Historical Lighting	13		
• Proposed Entries and Paths	14		
• Proposed Green Space	15		
• Proposed Gathering Area	16		
• Proposed Chill Zone - Plaza Seating	17		
• Proposed Chill Zone - Play	18		
• Proposed Fitness Equipment	19		

## HISTORIC SIGNIFICANCE CONSIDERATIONS

### Cass Park Local Historic District (Sec. 21-2-233.)

"Cass Park bisects Second Avenue and provides a vista that is visible from a great distance to the north."

*In this plan the vista along Second Avenue through the park retained with walkway and landscaping.*

"Cass Park is highly symmetrical in nature with eight entries converging on the center of the park from each corner and from the center of each of its four sides: this relationship is considered a significant feature of the park."

*The symmetry is retained along one axis, as well as retaining eight entrances that converge in the center of the park, although slightly shifted to the west to allow for larger green space to improve park usability. This is in keeping with the incremental movements away from perfect symmetry started in 1934 and continued into the 1970s.*

"Mature trees along the perimeter of Cass Park that provide a sense of enclosure within the park."

*This plan replaces damaged/unhealthy/invasive trees along the perimeter and throughout the park.*

"Buildings flanking Cass Park create a sense of enclosure and contribute greatly to the integrity of feeling and setting within the park."

*No longer applicable.*

"The statue of Robert Burns sits on the northern edge of Cass Park, centered on its block face, and faces north along Second Avenue."

*The statue of Robert Burns remains in the same prominent location in the northern edge of the park, with minor repairs to the base.*

## PROJECT DESCRIPTION

The land now known as Cass Park was deeded to the City of Detroit by General Lewis Cass in 1860 while Michigan was still a US Territory; designated as “forever parkland” the property was intended to remain for the use and enjoyment of the public in perpetuity.

Cass Park was lighted in 1896, enhancing its appeal as a community place. In 1921, a statue honoring the Scottish poet Robert Burns was installed, adding a cultural landmark to the park. Significant renovations occurred in the 1960s using Urban Beatification funding. Additional art was added in the 1970s such as the James Lawon Sculpture that remains today.

The proposed improvements to Cass Park are intended to enhance the existing use of the park and provide more opportunities for play, enjoyment, and social interaction in the park. These improvements include replacing the old deteriorated walks, removal of invasive trees and planting additional trees, reintroducing play elements, benches and picnic tables that historically were in the park and replacing the old fitness equipment.

The redesign of Cass Park involved extensive community engagement. Stakeholders and residents expressed what they would like to see in the park and the proposed design reflects that input as well as ensuring it meets modern needs, while respecting the history of the park.

## CASS PARK COMMUNITY ENGAGEMENT

### **COMMUNITY OUTREACH SCHEDULE**

- General Stakeholder Meeting - October 18, 2024
- Community Meeting #1 - November 14, 2024
- Stakeholder Meeting with Robert Burns Club - January 29, 2025
- Student Survey - March through April 2025
- Stakeholder Meeting with Food Distribution Group - March 17, 2025
- Stakeholder Meeting with Cass Tech PTSA - March 20, 2025
- Community Meeting #2 - March 26, 2025

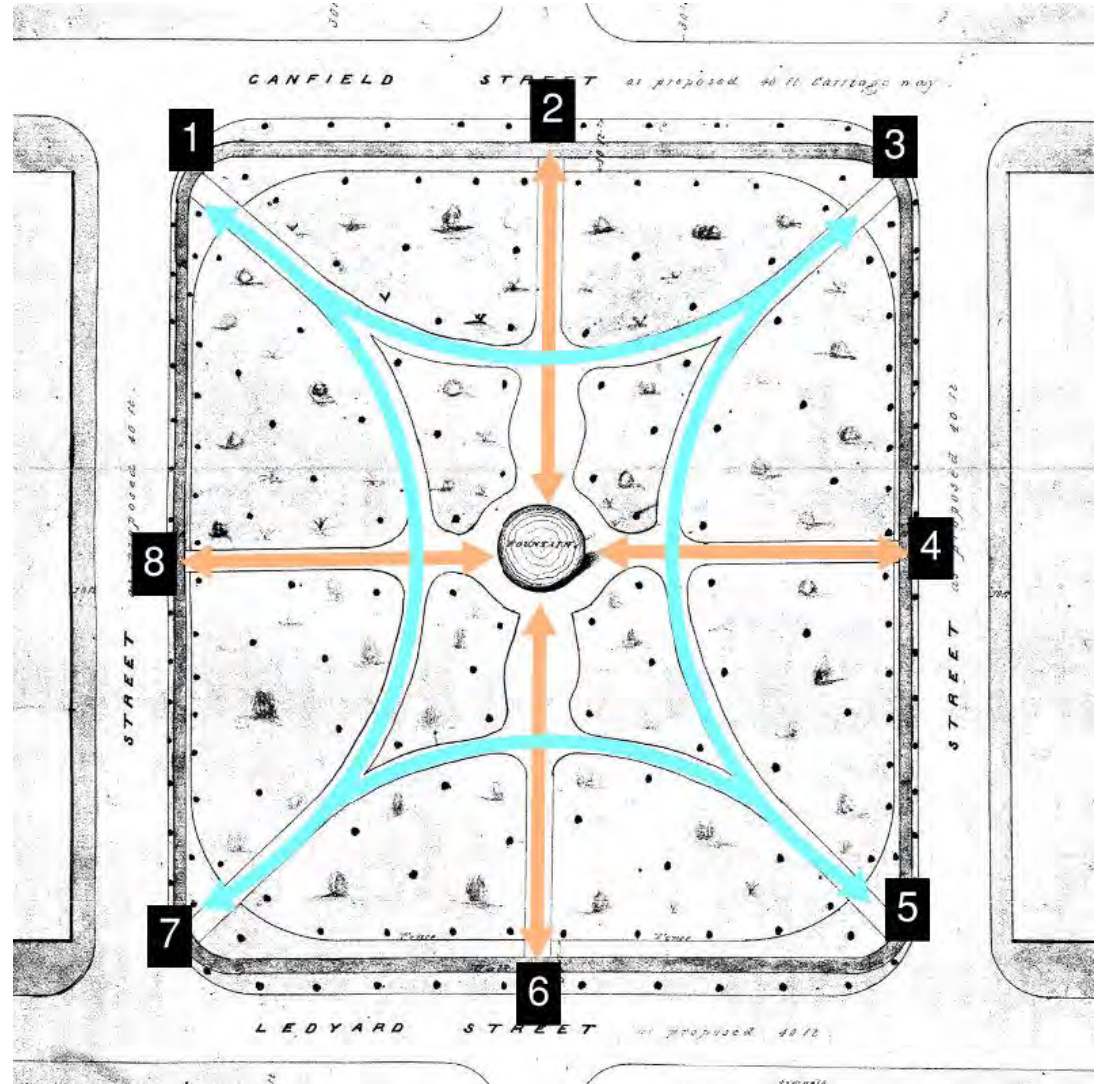
### **ENGAGED STAKEHOLDERS**

- The Masonic Temple
- Mariners Inn
- Cass Tech Leadership, PSTA
- Chinatown Vision Committee
- Olympia
- Residents (from prev. community benefits group)
- Robert Burns Club
- Residents that live on the park (2714 Second)
- Park Users
- Food Distribution Group
- Cass Tech Students

## HISTORIC PLANS: CASS PARK 1860

### Park Design Details:

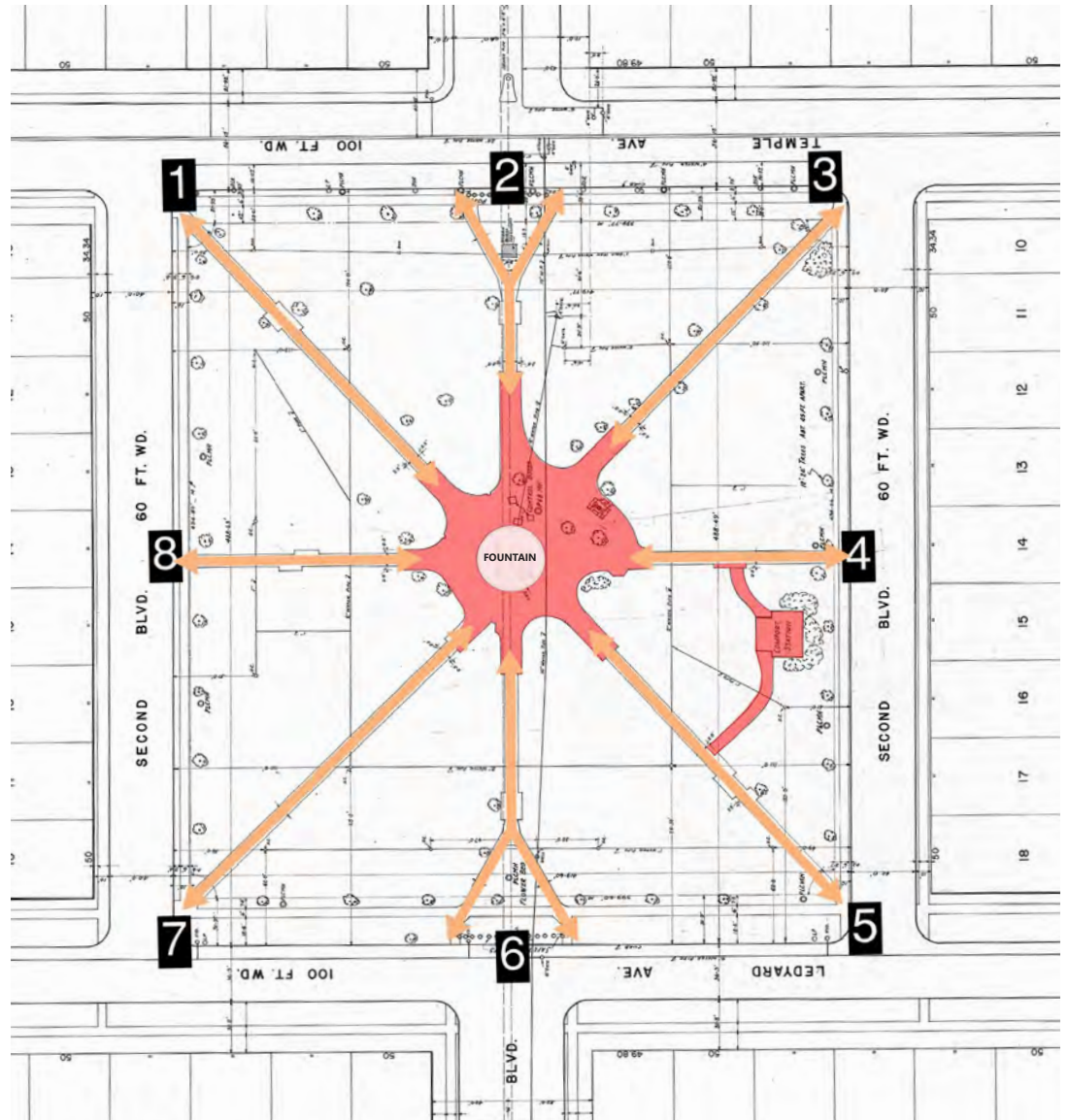
- 8 Entries
- Symmetrical design
- No sidewalk connections across Temple and Ledyard Streets
- Curvilinear/radiating pathways
- Central focal point



## HISTORIC PLANS: CASS PARK 1934

### Park Design Details:

- 8 Entries
- Asymmetrical center and pathways introduced
- Split entry responding to sidewalks across Temple and Ledyard Streets
- Central focal point

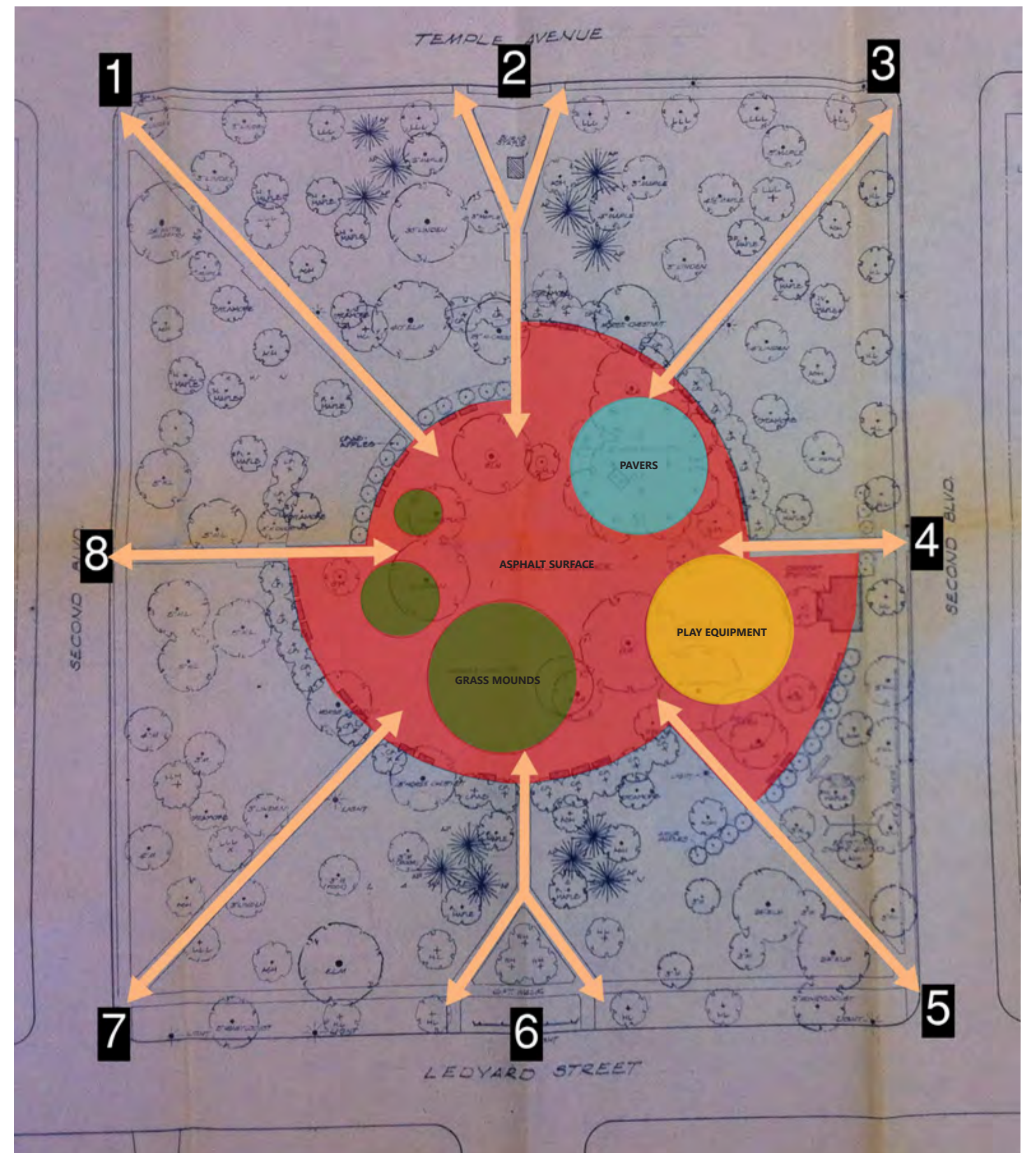




## HISTORIC PLANS: CASS PARK 1978

### Park Design Details:

- 8 Entries
- Center and pathways become more asymmetrical
- Adventure pathway and meandering center introduced
- Straight pathways with varying lengths
- No central focal point
- Different surface materials introduced
- Structural elevations introduced; mounds and playground





## EXISTING PARK CONDITIONS

The most recent aerial from 2025 displays the existing conditions of the park. Currently, Cass Park offers majority of passive activities to the surrounding urban environment.

- Deteriorated surfaces
- Scarce amenities (non-park standard benches and picnic tables)
- Lack of ADA accessibility to picnic area(s)
- Dense trees
- Sculptural features



Not to scale

ROBERT BURNS STATUE

FITNESS EQUIPMENT

JAMES LAWTON  
SCULPTURE

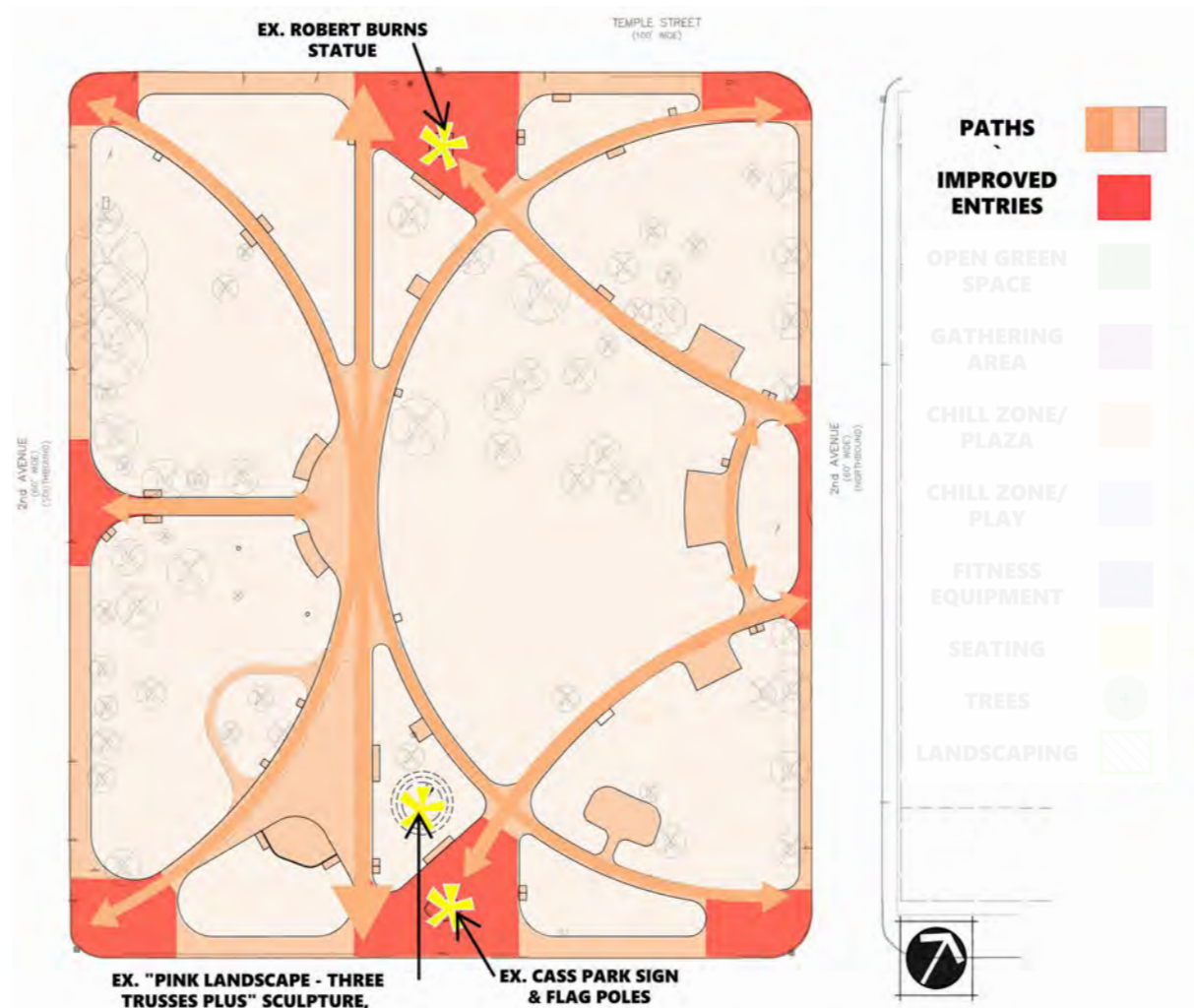
CASS PARK SIGN AND  
FLAG POLES



## CASS PARK 2025 PROPOSED ENTRIES AND PATHS

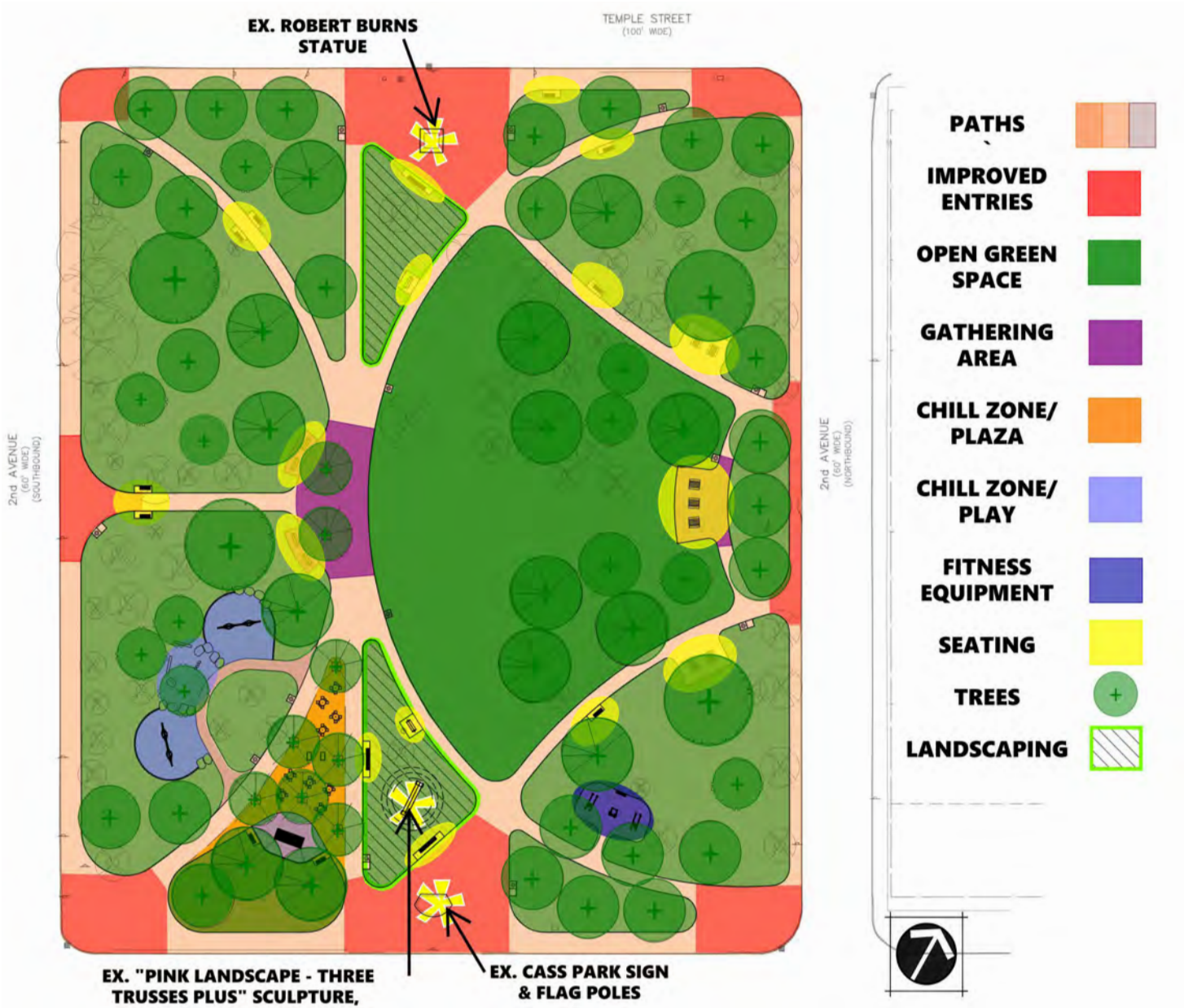
### Park Design Details:

- 8 Entries
- More formalized design
- Refines the symmetry of all designs and balances the park across the x and y axis
- Refines pathway systems and balances curvilinear and straight circulation
- Improves hardscape materials
- Central focal point nod to 1860 plan
- Provides programmed and unprogrammed spaces that respond to today's needs, while respecting the park's relationship towards the historical park designs
- 40,000+ square foot lawn space is required to allow for medium sized events (using city event capacity policy of 30 sf/person)





# CASS PARK 2025 PROPOSED PLAN



## CASS PARK HISTORICAL FEATURES

### **HISTORICAL FEATURES IMPROVEMENTS:**

The Robert Burns Statue will remain in its existing location (north entrance) with a repaired base and restoration. The James Lawton sculpture will be restored to the original pink color and relocated slight south of it's current location to the more prominent entrance and will be on a landscaped area, as oringially intended by the artist. South entrance will also include the restored Cass park sign and flag poles.



Restore Robert Burns Statue



Relocate and restore the James Lawton Sculpture, "Pink Landscape - Three Trusses Plus"



Restore Cass Park Sign and Flag Poles



## CASS PARK HISTORICAL LIGHTING

### HISTORICAL FEATURES IMPROVEMENTS:

Mismatched modern light fixtures will be replaced with the standard light poles used in the right-of-way in other historic neighborhoods throughout the City. Using this standard will help with future maintenance and replacements.



Current Park Lighting



Historic Park Lighting

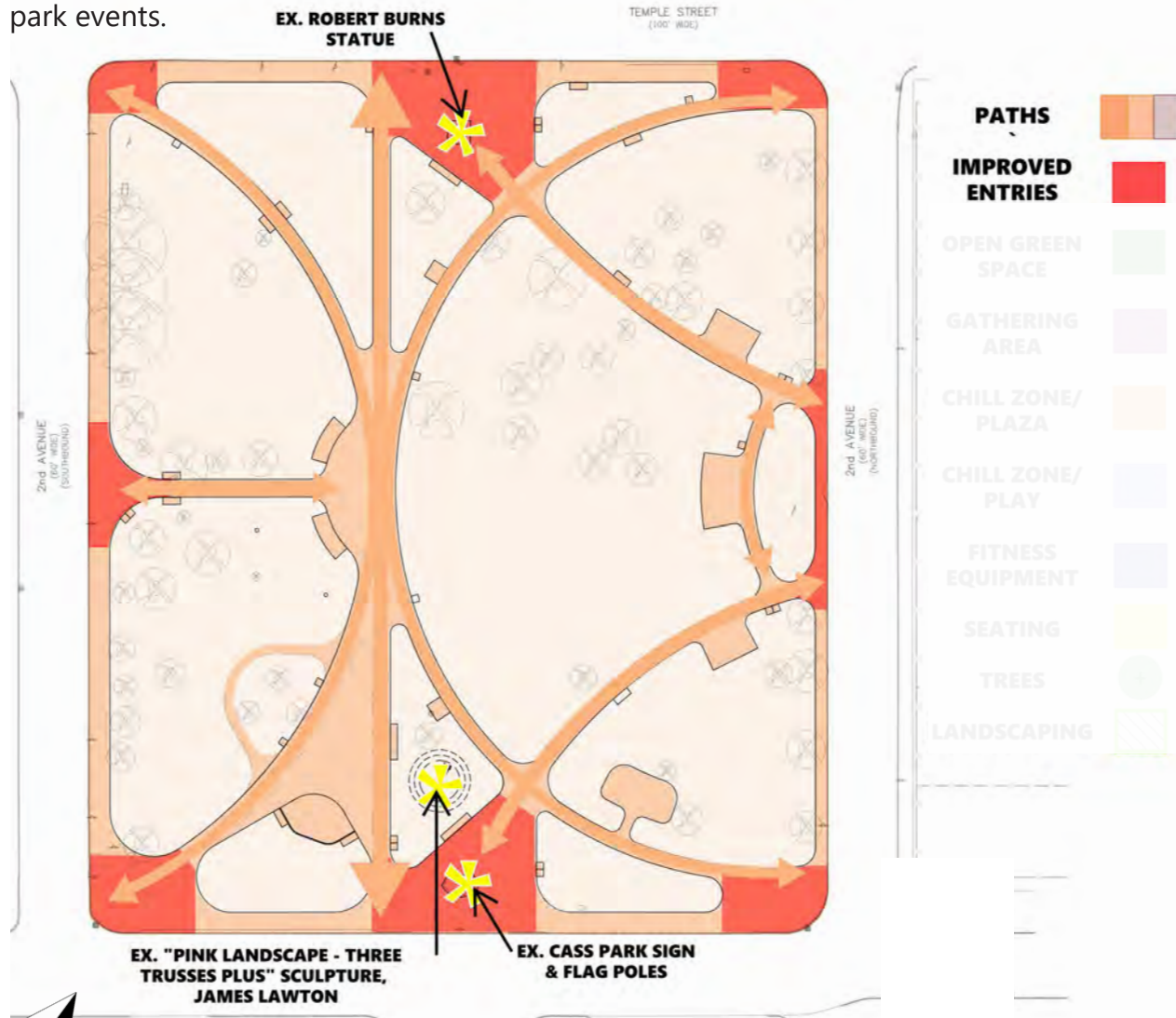


Historic Park Lighting



## PROPOSED ENTRIES AND PATHS

The entries will be improved, enhancing direct access to park amenities and surrounding places. The north-south promenade will be emphasized and shifted slightly west to accommodate more green space necessary for park programming. The southwest edge of the park is designed to accommodate the students that gather there from Cass Tech High school. The pathways on the east side were designed to accommodate the monthly food distribution group that has been operating in the park for over 25 years as well as other park events.



Not to scale



## PROPOSED OPEN GREEN SPACE

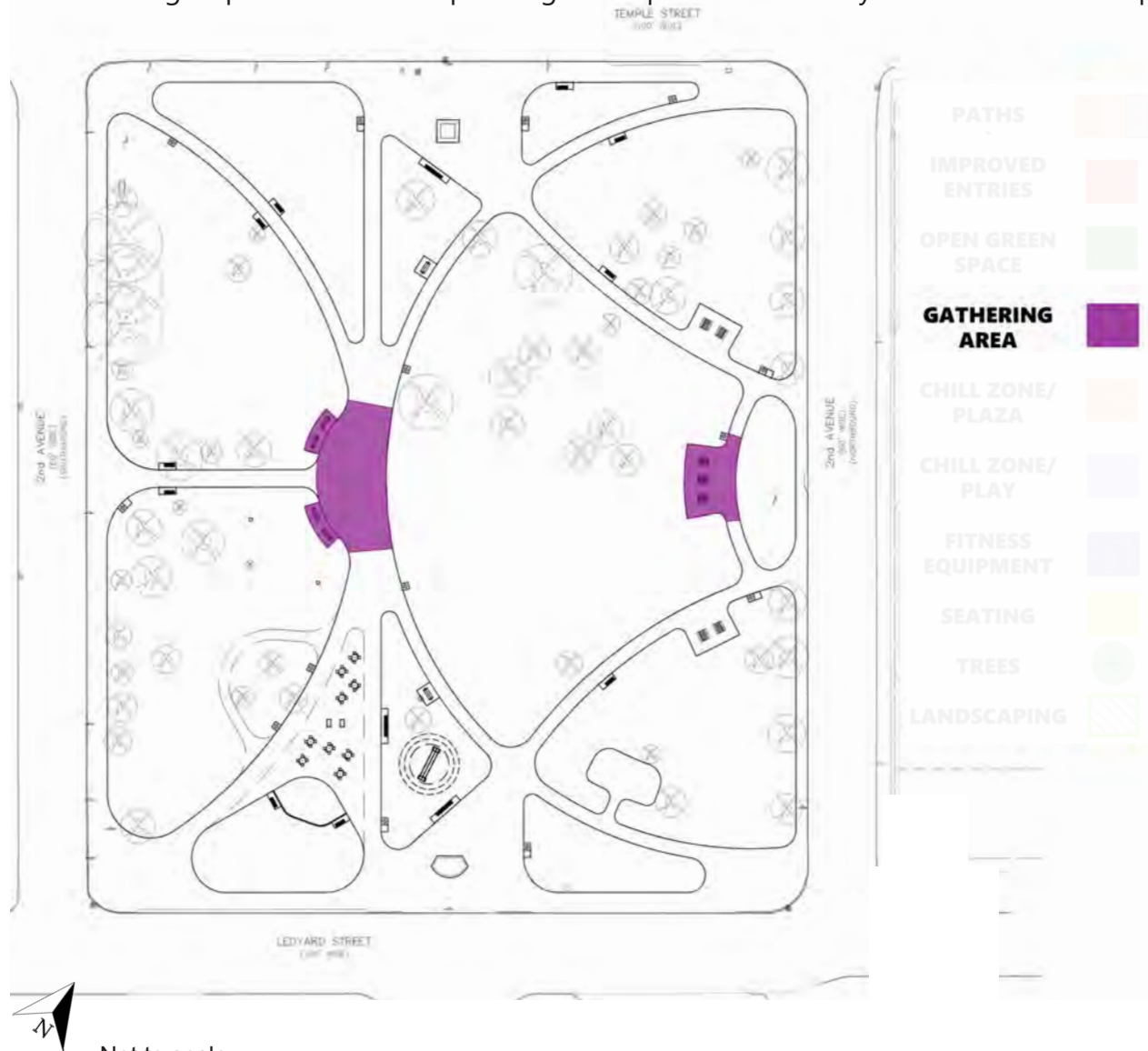
One of the main changes community members asked for was to increase useable green space in the park. The various proposed greenspaces will allow for quieter as well as more active areas for activities such as relaxing, reading, playing, or exercising as well opportunities for community gatherings. To be able to accommodate medium-sized events, such as movie nights, student concerts and seasonal celebrations at least 40,000 SF of contiguous greenspace is needed, which resulted in the proposed lawn area, while still retaining the historic park symmetry along one axis and the vista down 2nd Ave.





## PROPOSED GATHERING AREA

The central gathering area will serve as hardscape meetup space with swinging benches overlooking the open green space, as a reference to the past historic park plans with a more centralized focal point. In addition, the eastern gathering area accommodates the monthly food distribution group that has been operating in the park for over 25 years as well as other park events.



## PROPOSED CHILL ZONE - PLAZA SEATING

The proposed plaza will be located across from Cass Tech High school, and will be a more active space, including cafe seating tables. The seating amenities will be City Standards, items are standardized through various parks in the city for ease of maintenance. All amenity materials will have a black powder coated finish.



Not to scale





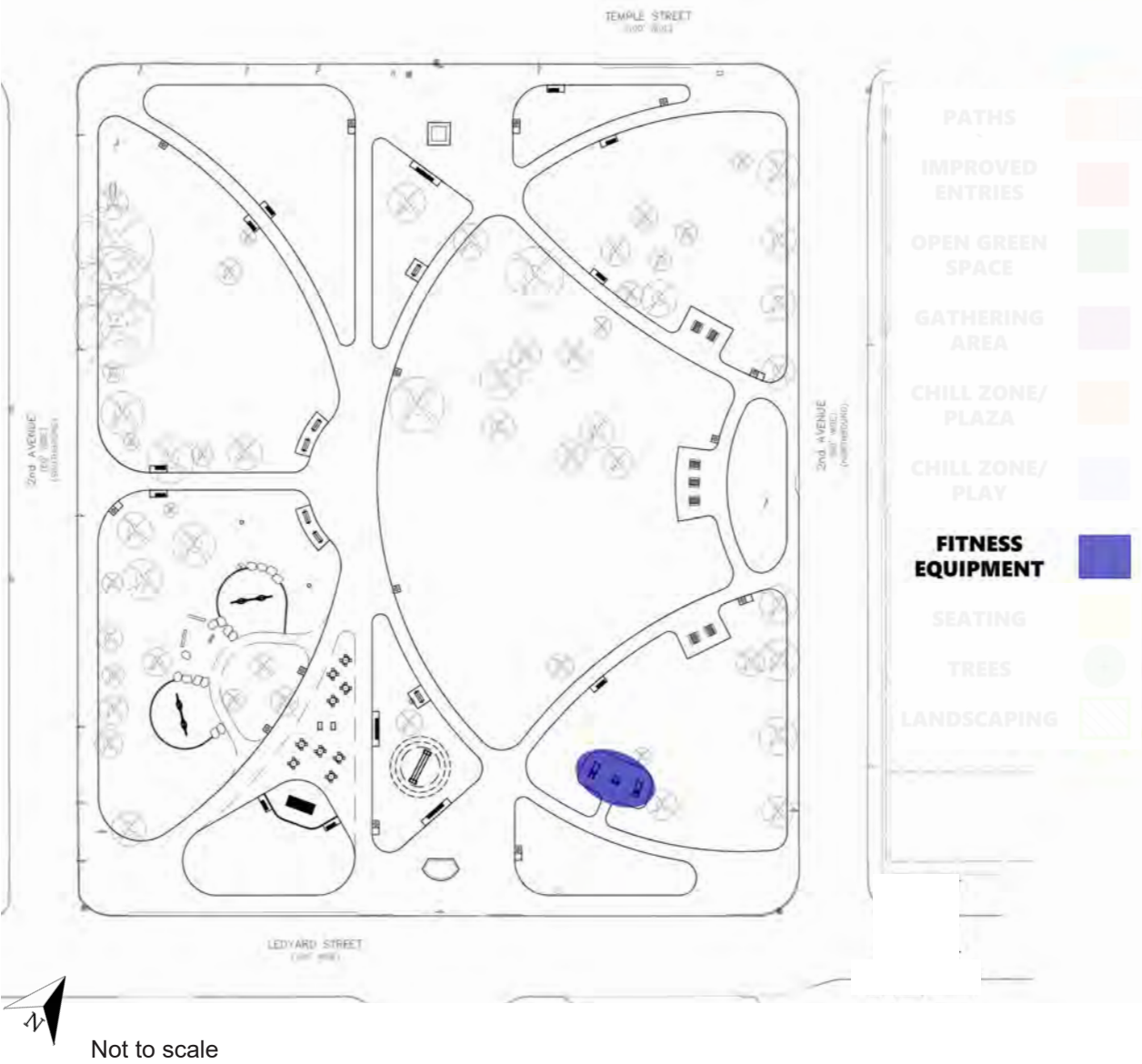
## PROPOSED CHILL ZONE - PLAY

The proposed play elements are intended for people of all ages to have the opportunity to play and socialize. The selected colors comply with the elements of design in the ordinance: the swing posts will be black and the standing seesaw will be finished wood, as shown.



# PROPOSED FITNESS EQUIPMENT

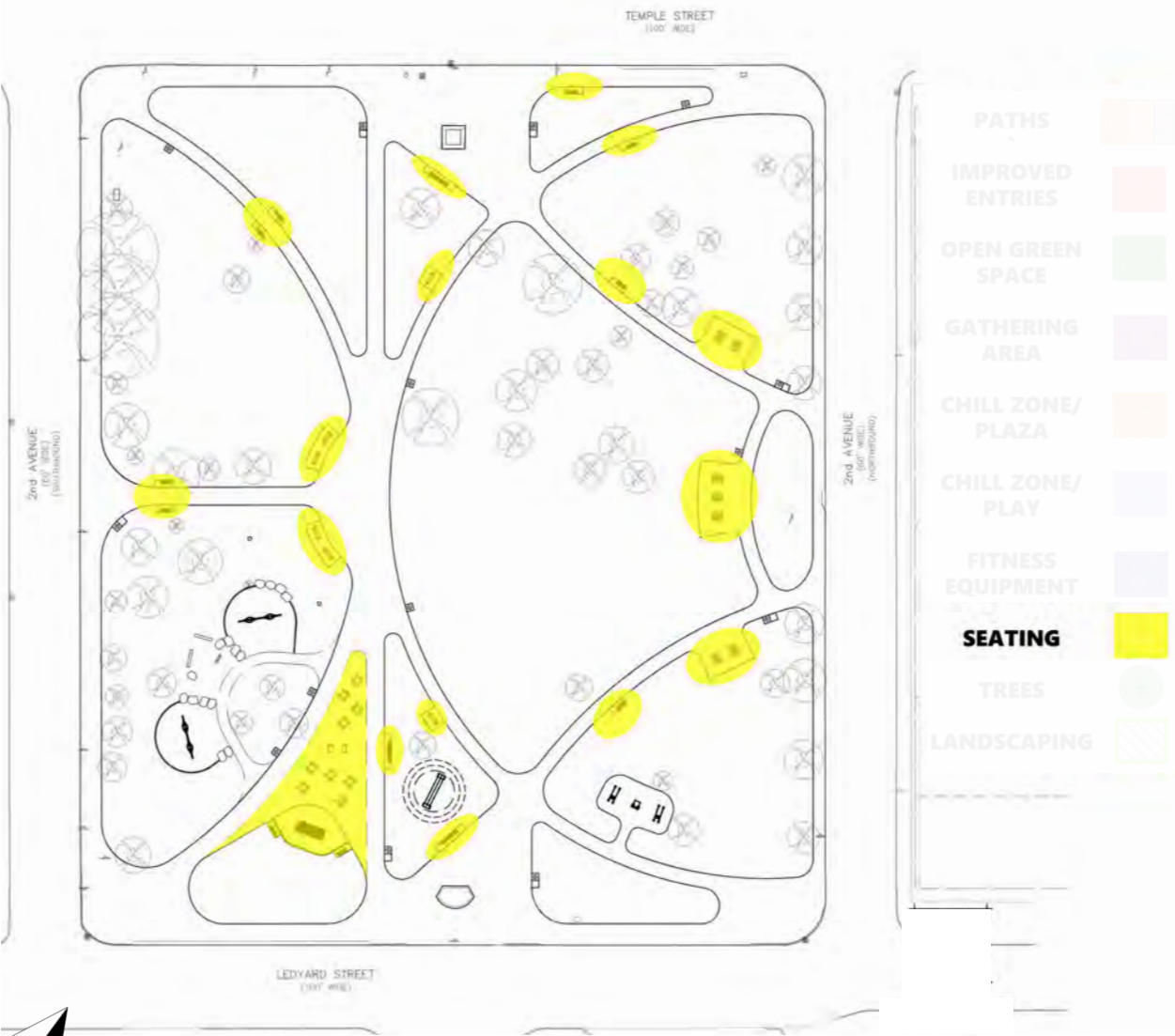
The proposed fitness equipment will replace the current, dilapidated equipment, and be relocated southern portion of the park closer to the active part of the park near Cass Tech High school. The color palette will be silver and black, as is City Standard for ease of maintenance as well as to ensure it blends into the background of the park scenery.





# PROPOSED SEATING

There are various proposed seating types throughout the park: cafe tables, swinging benches, park benches, and picnic tables. All items are City Standards and found in various parks across the city for ease of maintenance. All seating amenities will have black powder-coated finish.

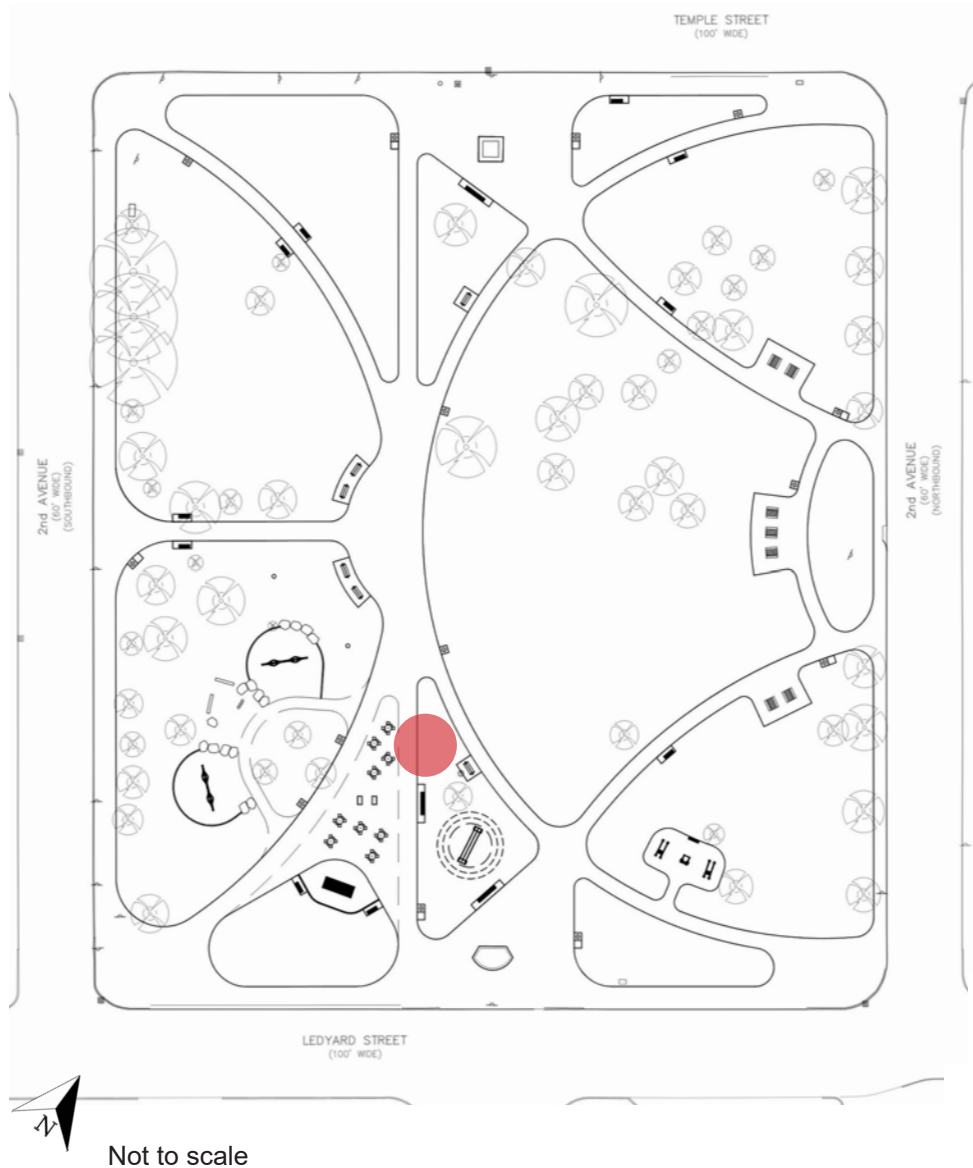


Not to scale



## PROPOSED DRINKING FOUNTAIN

The proposed drinking fountain is another improvement in reimagining the historic presence of the park. The drinking fountain will be accessible to all and include a pet fountain; amenity will have black powder-coated finish.







## CASS PARK ARBORIST TREE SURVEY

### EXISTING TREES:

The majority of the trees in Cass Park either have trunk damage, are dead (poor condition), or need pruning (fair). Most of the proposed tree removals are Bradford trees which are invasive as well as being in poor condition, they are along the northern and southern edges of the park and will be replaced with healthier spacing and native and non-invasive varieties.



Not to scale

-  TREE, POOR CONDITION (-59)
-  TREE, FAIR CONDITION (46 TO REMAIN)
-  TREE, GOOD CONDITION (16 TO REMAIN)

NOTE: PROPOSE PLANTING OF 60+ NEWER TREES



INVASIVE BRADFORD PEAR



## PROPOSED TREES AND LANDSCAPING

For every tree removed in the park it will be replaced, with improved spacing for tree health as well as non-invasive and native varieties. Any gaps in the perimeter planting will be replaced to ensure the sense of enclosure that the park historically has had is retained. There will also be shade trees planted along pathways and two, loose lines of trees to retain the vista down 2nd Avenue through the park. Garden beds will be added to enhance this 2nd Ave entries and vista as well.



## PROPOSED TREE SELECTION



'OCTOBER GLORY' RED  
MAPLE



'AUTUMN GLORY'  
MAIDENHAIR TREE



'EXPRESSO' KENTUCKY  
COFFEE TREE



'PRINCETON' ELM



SWAMP WHITE OAK



## PROPOSED LANDSCAPING SELECTION



HYDRANGEA PANICULATA



FILIPENDULA RUBRA



VERONICASTRUM VIRGINICUM



ECHINCEA PURPUREA



PHLOX PANICULATA



RUSSIAN SAGE



'ENDLESS HEART' DAYLILY



'STORM SHELTER' DAYLILY



THALICTRUM AGUILEGIFOLIUM



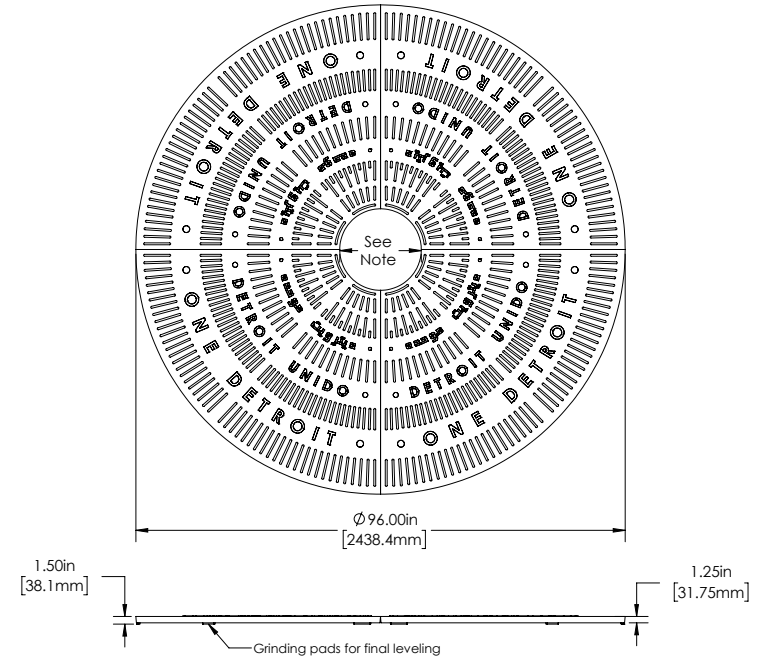
## PROPOSED TREE GRATES - GATHERING SPACE AND CHILL ZONE/PLAZA

### PROPOSED TREE GRATES

The tree grates will be located in the gathering and chill zone/plaza space as shown on the map in shaded areas, to accommodate trees within the gathering areas, to help retain the symmetry of the green spaces in the park and canopy.



### TREE GRATE DETAIL



## PARK SIGNAGE

### **EXISTING PARK SIGN:**

Currently the only sign in Cass Park is a engraved concrete pillar, as shown below and in the adjacent park site plan. The sign is currently located in a raised planter bed center in the park along Ledyard St and 2nd Ave.



EXISTING PARK SIGN TO REMAIN

### **PROPOSED ADDITIONAL PARK SIGNS:**

The proposed design will place one standard park sign with city branding at north park entrance, as shown on the adjacent site plan. The park sign will identify the site as a City park as well as post park hours.



PROPOSED PARK SIGN

# CASS PARK 2025 PROPOSED PLAN



Not to scale

**SCOPE OF WORK AND CUT SHEETS ATTACHED**



# **CASS PARK**

## **SPRING 2026 DESIGN**



GENERAL SERVICES DEPARTMENT  
**Parks & Recreation**  
**Division**













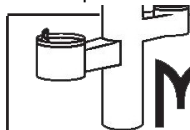












# HISTORICAL DRINKING FOUNTAIN SPECIFICATIONS

## WATER QUALITY (LEAD FREE)

Section 9, California Proposition 6 and the Federal Safe Drinking Water Act.

## STAINLESS STEEL PEDESTAL

One piece weld construction with MDF standard 304 schedule 10 stainless steel.

## RECEPTOR BOWL

18 gauge electro-polished stainless steel bowl. Bowl overlaps pedestal, preventing build-up of residue in visual drinking area. Optional stainless steel Bowl Strainer recommended for areas with sand.

## BUBBLER HEAD

Stainless steel anti-squirt head (weighing a pound and a half) mounted with a lock nut and washer to prevent tampering. Lock nut pin holds bubbler in locked position to prevent twisting or turning. The MDF bubbler head has a unique design that features a steady stream trajectory and a built in natural shield from contamination.

## PUSH BAR

304 stainless steel with circumference exceeding 8.6". Mushroom style push bar overlaps and prevents sand and other objects from sticking push bar in the ON position. Stainless steel bubbler housing standard.

## CONTROL VALVE

Self closing valve requires less than 5 lbs to operate. Non-cartridge O-ring valve delivers steady stream of water through an adjustable valve. This valve design is to operate and function at 30 to 80 PSI. Ideal operating pressure is 60 PSI.

## WATER SUPPLY (LEAD FREE)

Maintenance free reinforced nylobraid tubing - **this tubing is not plastic**. It is supplied with a 1/2" MIP threaded inlet with stainless steel strainer. Union fittings at every connection. Supply line stops above grade.

## DRAIN

1 1/2" schedule 40 PVC pipe. Drain line stops above grade.

## FINISH

Oven baked powder coat. Choice of colors are: ☐ green, ☐ blue, ☐ black, ☐ brown, ☐ red, ☐ yellow, ☐ orange, and ☐ white. Textured color choices: ☐ emerald, ☐ sapphire, ☐ pyrite, ☐ text-black, ☐ burgundy, ☐ gold vein, ☐ copper and ☐ sandstone. Stainless steel models are powder coated for added protection. The color ☐ chrome is available for stainless steel models only.

## ACCESS

Working parts accessible through bowl of fountain for easy service. Supply and waste connections are through the above grade access door. All access plates, brackets, vandal resistant bolts and screws are stainless steel.

## INSTALLATION

**Surface Mount** installation, is designed to be anchored on top of an existing surface (concrete, etc.) with anchor bolts through a mounting plate that is welded to the fountain. Surface Mount Fountains provided with an access door with vandal resistant stainless steel screws. Surface mount carrier recommended for all surface mount installations. Access door standard on all pedestal fountains.

## WINTERIZATION

Shut off water and drain down.

## WARRANTY

One year warranty, labor not included.

## SHIPPING WEIGHT

Model 2400 SMSS..... 110 lbs      Model 2410 SMSS..... 110 lbs

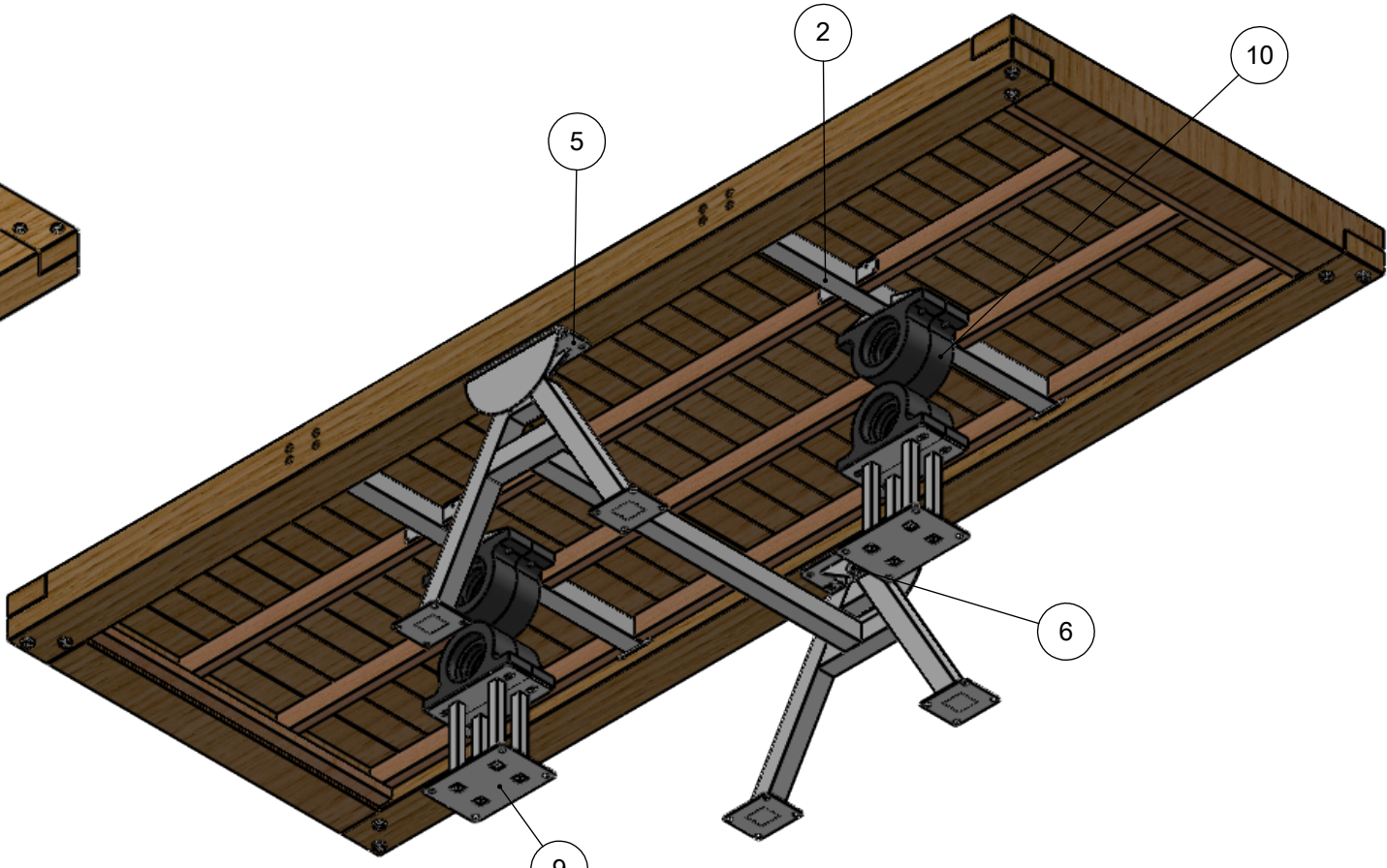
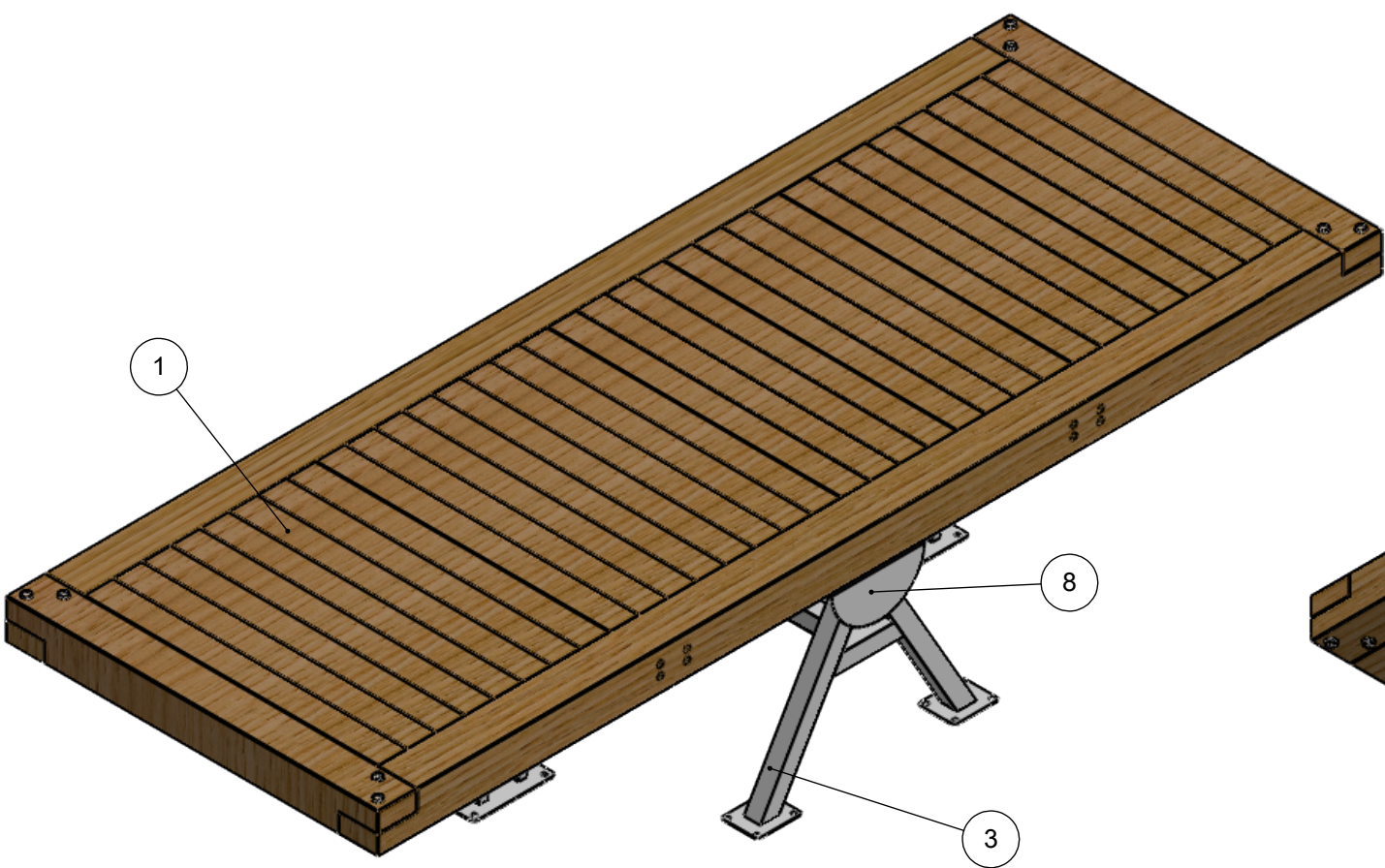
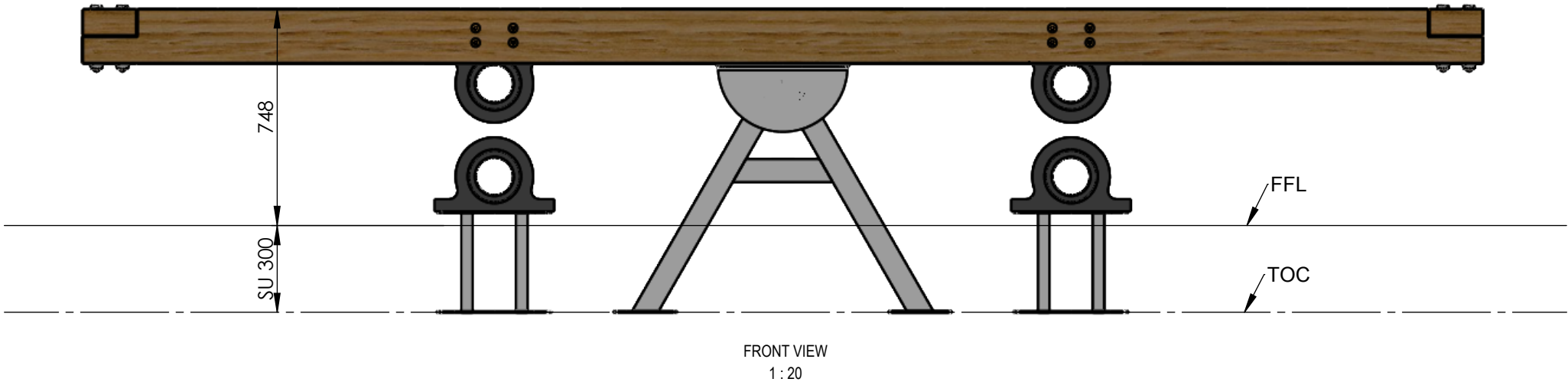
Model 2440 SMSS\*.... 120 lbs      Model 2493 SMSS\*.... 145 lbs

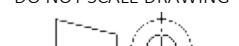
\*Meets ADA for High and Low

**MOST DEPENDABLE FOUNTAINS, INC.™**  
5705 COMMANDER DR. • ARLINGTON, TN 38002-0587  
www.mostdependable.com  
(901)867-0039



ITEM NO.	PART NO	DESCRIPTION	REV	QTY
1	SE.ST.01.1_007	Seesaw Platform	v7	1
2	SE.ST.01.1_008	Brace	V7	2
3	SE.ST.01.1_011	A-Frame	v7	1
4	FK UCP208	40mm Bore Bearing		2
5	SE.ST.01.1_009	Hinge Plate	V7	2
6	SE.ST.01.1_014	Clevis Pin	V7	2
7	SE.ST.01.1_015	Cotter Pin	V7	2
8	SE.ST.01.1_010	Hinge Guard	V7	2
9	SE.ST.01.1_013	Shock Absorber Footing	V7	2
10		Large Rubber Shock Absorber		8



REVISIONS						NOTES:  SHEET 1: SHEET 2: SHEET 3:   ALL EXPOSED EDGES TO HAVE A CHAMFER OF 3MM RADIUS.	<div>DO NOT SCALE DRAWING</div> <div></div> <div>THIRD ANGLE</div>	GENERAL TOLERANCES		SHEET 1 OF 8		DESCRIPTION  Standing Seesaw No.1 Sawn	
REV.	DESCRIPTION	DATE	DRAWN	CHECKED	ECN			(x): ±0.5 (0.x): ±0.2 (0.0x)±0.01 ALL ANGLES ±0.25° ALL DIMENSIONS IN MM	DATE  06/03/2025				
1	FIRST EDITION	06/03/2025	NV		N/A								
							<div>© Duncan &amp; Grove Group 2015-2024. Text, illustrations and technical information are confidential and protected by copyright. Information is proprietary and must not be copied or made available to any third party, without express permission of the sole proprietors Duncan &amp; Grove Group.</div>	<div>Duncan &amp; Grove duncanandgrove.com 020 7112 7551 WEIGHT: 661.97 KG</div>	<div>DUNCAN &amp; GROVE</div>		<div>DRAWING NUMBER  SE.ST.01.1.B</div>	<div>OLD REF</div>	<div>REV  V7</div>



## NW201 Air Walker



FITNESS

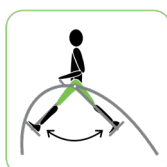
Norwell Air Walker improves the cardiovascular functions and increases the flexibility of the hip and thigh muscles. You get all of the benefits of running, without the risk of strain and impact injuries.

## HOW TO USE:

Grab the bar with both hands and step onto the foot pads. Take a brisk walk by moving your legs back and forth, while holding on to the bar to hold your balance. Switch between a fast and a slower pace.

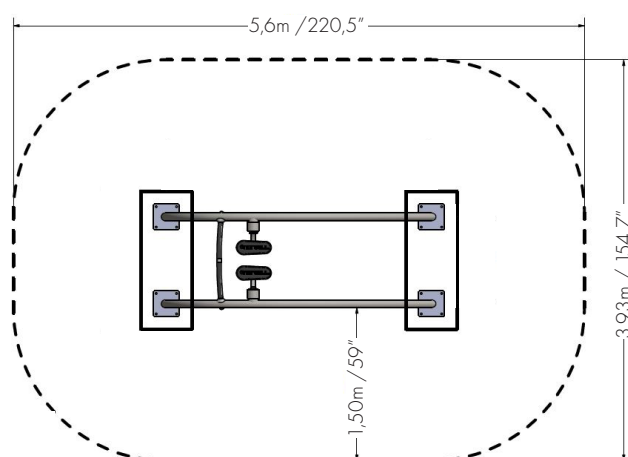
This exercise is good for the cardiovascular functions.

The Norwell App and the ID-bands, including training instructions and QR codes, on each fitness station inspire to exercise and give full instruction of use.



## POSITION AND TRAINING ZONE:

Trainingzone = 20m<sup>2</sup> / 215,3 ft<sup>2</sup>



## DESIGN FOR ALL

All Norwell fitness stations utilize the users own body weight as resistance, therefore the exercises can be performed without risk of injuries. As a result, Norwell fitness stations are challenging and effective regardless of fitness level.

## SAFE DESIGN

The Norwell Outdoor Fitness stations are tested and approved by TÜV Product Service GmbH according to DIN79000, EN16630 and AfPS GS 2014:01 PA.

## 10 YEAR WARRANTY

10 years against failure due to material or manufacturing defects and corrosion breakthrough on pipes, foundations and welds. Please contact us for more information about warranty coverage, and for sites within 5 km of saltwater.

## 2 YEAR WARRANTY

2 years against failure due to material or manufacturing defects and corrosion breakthrough on all moving parts, plastic and rubber parts.

## NW107 Dual Pull Up



FITNESS

Norwell Dual Pull Up is used when training arms, shoulders, back and core.

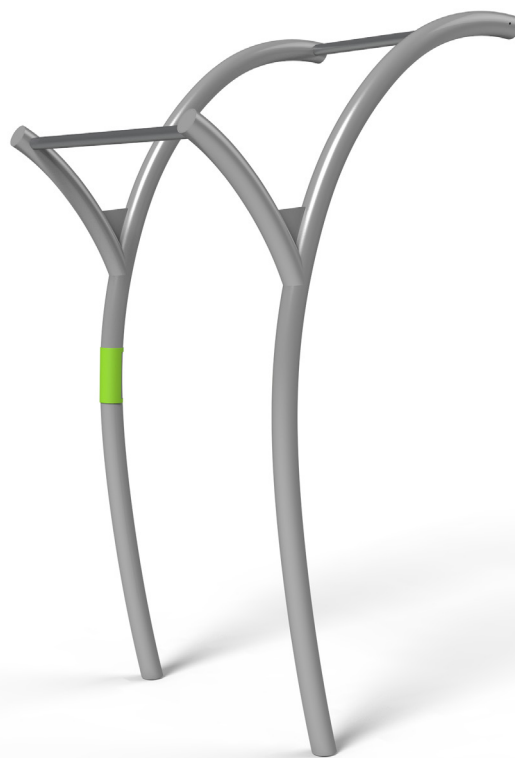
Dual Pull Up has two pull-up bars in different heights: 191 cm and 223 cm. Making it possible for users to train together.

## HOW TO USE:

Grab the bar palms facing forward a shoulderwidth apart. Hang with your arms fully extended. Keep your shoulders back and your core engaged. Move slowly upward until your chin is above the bar, then equally slowly downward.

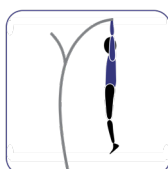
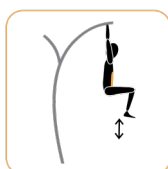
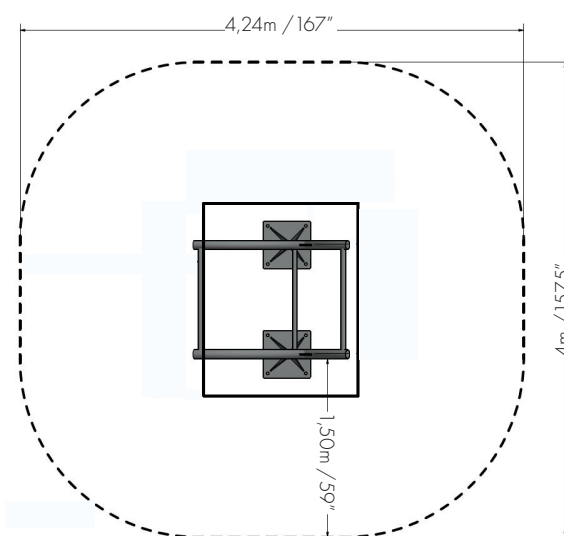
Leg raise: Start by hanging from the bar, grip with palms facing forward. Then pull up your knees as close to the chest as possible, and back down. This exercise trains your abdominal.

The Norwell App and the ID-bands, including training instructions and QR codes, on each fitness station inspire to exercise and give full instruction of use.



## POSITION AND TRAINING ZONE:

Trainingzone = 15m<sup>2</sup> / 161,5 ft<sup>2</sup>



## DESIGN FOR ALL

All Norwell fitness stations utilize the users own body weight as resistance, therefore the exercises can be performed without risk of injuries. As a result, Norwell fitness stations are challenging and effective regardless of fitness level.

## SAFE DESIGN

The Norwell Outdoor Fitness stations are tested and approved by TÜV Product Service GmbH according to DIN79000, EN16630 and AIPS GS 2014:01 PA.

## 10 YEAR WARRANTY

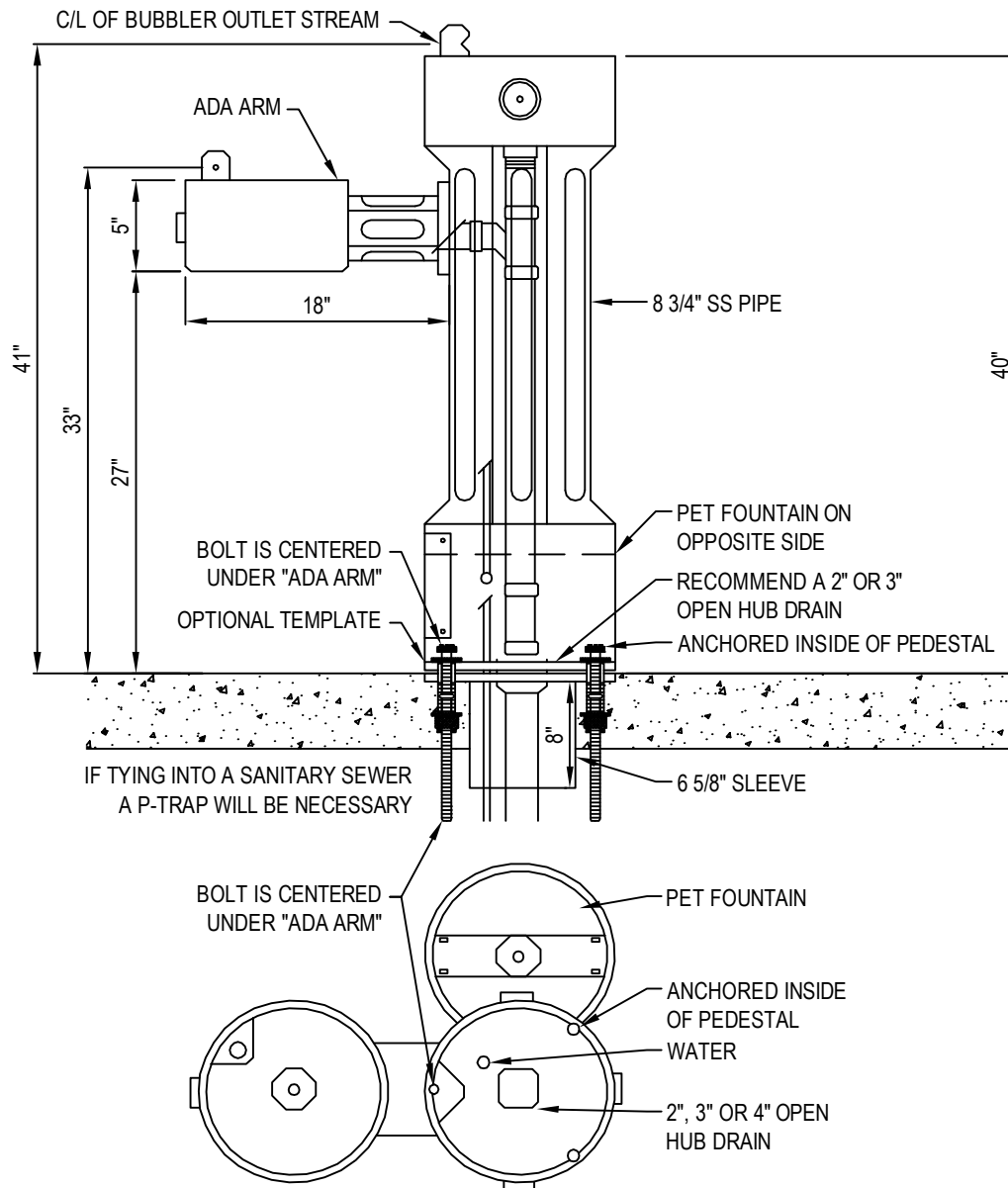
10 years against failure due to material or manufacturing defects and corrosion breakthrough on pipes, foundations and welds. Please contact us for more information about warranty coverage, and for sites within 5 km of saltwater.

## 2 YEAR WARRANTY

2 years against failure due to material or manufacturing defects and corrosion breakthrough on all moving parts, plastic and rubber parts.

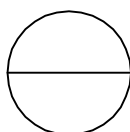


MOST DEPENDABLE FOUNTAINS, INC.  
 5705 COMMANDER DR. P.O. BOX 587  
 ARLINGTON, TN 38002-0587  
 PHONE: (901) 867-0039  
 FAX: (901) 867-0159  
 www.mostdependable.com



**NOTES:**

1. INSTALLATION TO BE COMPLETED IN ACCORDANCE WITH MANUFACTURER'S SPECIFICATIONS.
2. DO NOT SCALE DRAWING.
3. THIS DRAWING IS INTENDED FOR USE BY ARCHITECTS, ENGINEERS, CONTRACTORS, CONSULTANTS AND DESIGN PROFESSIONALS FOR PLANNING PURPOSES ONLY. THIS DRAWING MAY NOT BE USED FOR CONSTRUCTION.
4. ALL INFORMATION CONTAINED HEREIN WAS CURRENT AT THE TIME OF DEVELOPMENT BUT MUST BE REVIEWED AND APPROVED BY THE PRODUCT MANUFACTURER TO BE CONSIDERED ACCURATE.
5. CONTRACTOR'S NOTE: FOR PRODUCT AND COMPANY INFORMATION VISIT [www.CADdetails.com/info](http://www.CADdetails.com/info) AND ENTER REFERENCE NUMBER 3354-6.61.



**2440 SMSS**

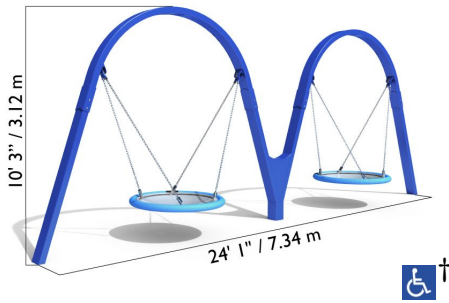
SHOWN W/ OPTIONAL TEMPLATE: 10 NS, OPTIONAL PET FOUNTAIN







# PRODUCT SPECIFICATION



Product Name	Biggo Duo™
Product Number	DX-3200
Size -- Width	7.34 m / 24' 1"
Size -- Height	3.12 m / 10' 3"
Shipping Weight	545 kg / 1201.5 lb
Shipping Volume	5.10 m <sup>3</sup> / 180.1 ft <sup>3</sup>
Foundations	3
Concrete Volume	0.80 m <sup>3</sup> / 28.3 ft <sup>3</sup>

	<b>ASTM F-1487</b>	<b>CSA Z614</b>	<b>EN 1176</b>
Ages	2 years - 12 years	18 months - 12 years	2 years - 12 years
Capacity	8	8	8
Use Zone -- Length	9.27 m / 30' 5"	7.50 m / 24' 7"	7.80 m / 25' 7"
Use Zone -- Width	11.00 m / 36' 1"	10.94 m / 35' 11"	5.86 m / 19' 3"
Use Zone -- Area	74.81 m <sup>2</sup> / 805.2 ft <sup>2</sup>	90.62 m <sup>2</sup> / 975.4 ft <sup>2</sup>	36.52 m <sup>2</sup> / 393.1 ft <sup>2</sup>
Fall Height	2.39 m / 7' 10"	2.39 m / 7' 10"	1.51 m / 4' 11"
No-Encroachment Zone	Not Applicable	1.80 m / 5' 11"	Not Applicable

\*Note: Concrete must be minimum 3500 PSI / 25MPa



To verify product certification, visit [www.ipema.org](http://www.ipema.org)



To verify product certification, visit [www.ipema.org](http://www.ipema.org)



## Product Features:

<b>SUPPORT POST:</b>	This will be 3" x 6" (75mm x 150mm) rectangular steel tubing, 3/16" (5mm) thick, embedded in concrete footings.
<b>FRAME JUNCTION:</b>	This will involve a rectangular tubular steel over-sleeve, welded fully around its upper perimeter, which sleeves over the top end of each leg on its lower end. The junction will be secured in place with stainless steel bolts, and finished with polyester powder coating.
<b>SWIVEL CONNECTOR:</b>	This will be an aluminum swivel connector with a low friction and high abrasion resistant UHMWPE bushing and tamper-resistant attachments. The aluminum swivel will have a smooth machine finish.
<b>SUSPENSION CHAIN:</b>	This will be either 5/16" (8 mm) galvanized steel chain. Each chain will have independent connections at seat and pivot.
<b>SEAT CONNECTION:</b>	The seat will be connected to the chain at four points, each by a one-piece machined stainless steel sleeve. (Patent Pending)
<b>SEAT BUMPER:</b>	This will be 3 1/2" (90mm) OD textile reinforced high-pressure rubber hose, containing no external dye markings and covered with a wear and soil resistant surface.
<b>BIGGO™ SEAT:</b>	This will be a one-piece aluminum bowl, weighing with its bumper and pieces no more than 42 lbs (19 kg) empty.

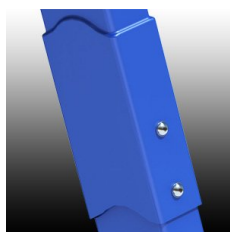


# PRODUCT SPECIFICATION

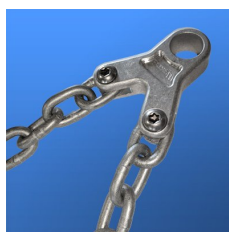
BASIC FASTENERS:	All fasteners for component attachments are stainless steel.
PAINT PROCESS:	All exposed steel will be finished with polyester powder coating unless otherwise specified. Prior to the powder coating application, the surface will undergo sand blasting and will be treated with a zinc rich epoxy primer having a minimum thickness of 1.5 mils.
INSTALLATION:	This should be installed only by a licensed playground installer, trained and certified on the relevant playground standards in place in the region of installation, e.g., NPSI, CPSI or similar certified.
NO-ENCROACHMENT ZONE:	Where required, this will be an obstacle-free zone that does not necessarily meet the requirements of the protective surfacing zone. See applicable standard for more information.
COMPLIANT WITH:	<b>CAN/CSA-Z614</b> <b>ASTM F-1487</b> <b>EN-1176</b> <b>CPSC Handbook for Public Playground Safety</b>
TÜV CERTIFIED:	Certified to EN 1176:2008 TÜV SÜD Certificate N° Z1 13 08 84504 002
IPEMA CERTIFIED:	The DX-3200 identified in this specification sheet is IPEMA certified. The use and layout of the DX-3200 conforms to the requirements of ASTM F1487 and CSA Z614. To verify product certification visit <a href="http://www.ipema.org">www.ipema.org</a> .



† Where proper surfacing is used, this product meets the ADAAG guidelines for accessibility, allowing the same play possibilities for people of all abilities.



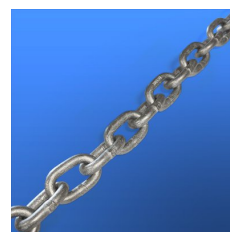
Frame Junction



Swivel Connector



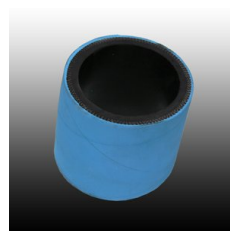
UHMWPE Bushing



Galvanized Steel Chain



Biggo Seat Connector



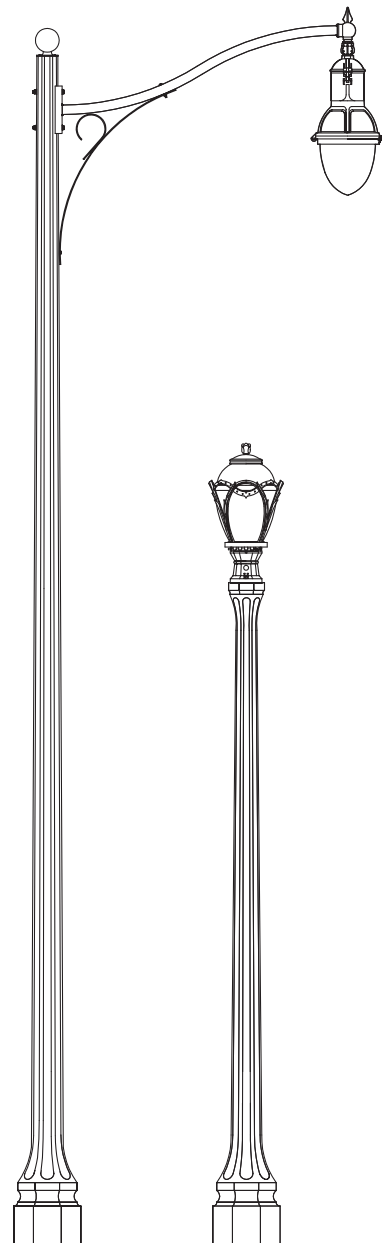
Biggo Bumper



## The Americana Series

# THE TALISMAN

With roots firmly established in the 20's and 30's the Talisman is an elegant version of several classic originals. In essence it is an 8 fluted version of the octagonal Belmont with the same graceful lines and proportions; the perfect choice to satisfy the tastes of many. It is available in heights from 5' to 32.5' as well as a lighted and nonlighted bollard.





## Specification Details\*

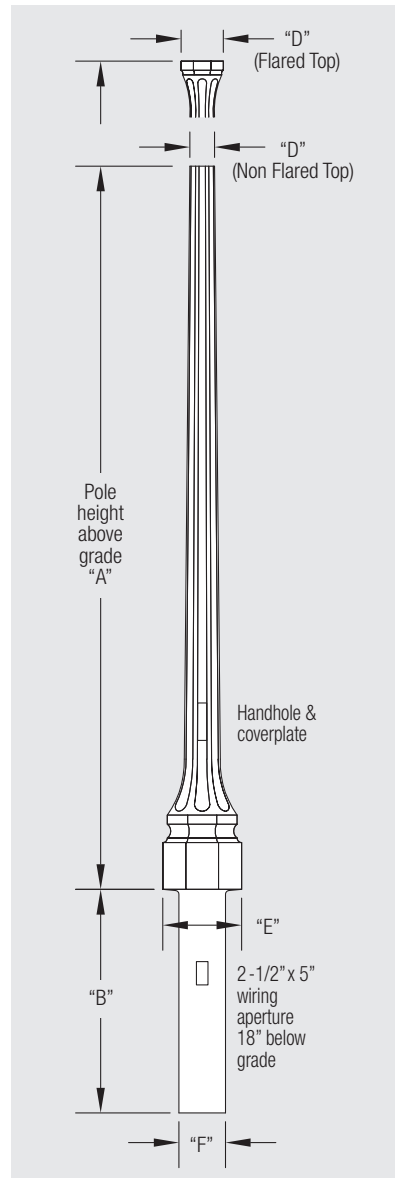
Description		Catalog Number	"A" Pole Height Above Grade	"D" Tip Dimension	"E" Flare	"B" Direct Burial Length & "F" Dia.	Pole Weight Direct Burial	Pole Weight Base Plate
Talisman Flared Top	11'	KT105	11'	9"	18"	4' 6" x 9 1/2"	1200 lbs	1000 lbs
Talisman Non Flared Top	12'	KT12	12' 0"	5 1/2"	18"	4' 6" x 9 1/2"	1300 lbs	1100 lbs
Talisman Flared Top	14'	KT14	13' 11"	9"	18"	4' 6" x 9 1/2"	1370 lbs	1170 lbs
Talisman Non Flared Top	20'	KTH20	20' 0"	5 3/4"	18"	5' 0" x 9 1/2"	1600 lbs	1400 lbs
Talisman Non Flared Top	25'	KTH25	25' 0"	5 3/8"	18"	5' 0" x 9 1/2"	1800 lbs	1600 lbs
Talisman Non Flared Top	20'	KTT20	20' 0"	7 3/8"	21"	5' 0" x 12"	2270 lbs	2000 lbs
Talisman Non Flared Top	25'	KTT25	25' 0"	6 1/2"	21"	5' 0" x 12"	2470 lbs	2200 lbs
Talisman Non Flared Top	30'	KTT30	30' 0"	5 7/8"	21"	5' 0" x 12"	2630 lbs	2360 lbs
Talisman Non Flared Top	33'	KTT32.5	32' 6"	5 1/2"	21"	6' 0" x 12"	2720 lbs	2450 lbs

\* Bollard specification details can be found on our website

## How to Catalog for Talisman Concrete Pole

Pole Style	Finish	Footing Details	Coating
KT KTH KTT	E – Etched Finish	DB – Direct Buried FBP – Flush Baseplate SBP – Stub Baseplate	NA – Non Acrylic A – Acrylic AG – Anti Graffiti Coating***
Height 5' - 32' 6"	Color** 10 – Midnight Lace 11 – Eclipse Black 30 – Salt & Pepper 40 – Pearl Gray 90 – Satin Bronze <b>E53 Detroit Green</b>	Tenon (Post Top Mount) Specify Tenon Size For example 140 30/30 = 2 7/8" OD & 3" long	Options* DR – Duplex Receptacle GFI – Ground Fault Duplex Receptacle SR – 1 Outlet LRN – Ladder Rest BPC – Base Plate Cover AB – Anchor Bolts BA – Banner Arms FH – Flag Holders

\* Consult website for full listings. \*\* See decor colors on page 2 for full selection of colors.  
\*\*\*Anti Graffiti Coating is extra, consult factory for more details.

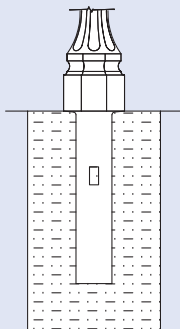


## Footing Details

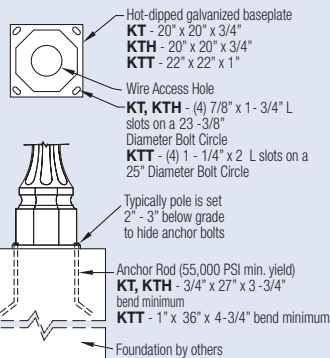
### Direct Buried

(Simple and Cost Effective)

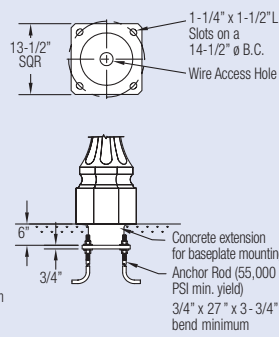
1. Auger the setting hole.
2. Set pole in hole and plumb straight.
3. Backfill\* with required backfill tamping every 4" to 6".



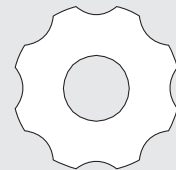
### Baseplate Option 1: FBP



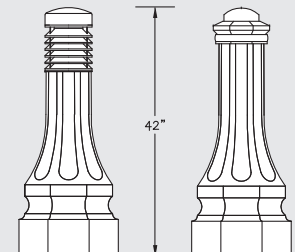
### Baseplate Option 2: SBP



\*Generally the excavated material can be used for backfill, in some situations better backfill may be required.



Typical Pole Cross Section



Lighted Bollard

Nonlighted Bollard

# EVOLVE



CUSTOMER NAME \_\_\_\_\_

PROJECT NAME \_\_\_\_\_

DATE \_\_\_\_\_ TYPE \_\_\_\_\_

CATALOG NUMBER \_\_\_\_\_

## EPAM Americana

### LED Post Top Lighting

The **Evolve®** LED Americana Post Top offers energy efficiency and quality of light in a classic, Acorn look and style.

### Construction

<b>Housing:</b>	Diecast aluminum housing.
<b>Lens:</b>	Acrylic or Polycarbonate Globe
<b>Paint:</b>	Corrosion resistant polyester powder paint, minimum 2.0 mil thickness Standard = Black, Dark Bronze RAL & custom colors available
<b>Weight:</b>	< 20 lbs (9.07 kgs)

### Optical System

<b>Lumens:</b>	1,900 – 12,600
<b>Distribution:</b>	Symmetric Asymmetric
<b>Efficacy:</b>	74-155 LPW
<b>CCT:</b>	3000K, 4000K
<b>CRI:</b>	≥70

### Electrical

<b>Input Voltage:</b>	120-277V
<b>Input Frequency:</b>	50/60Hz
<b>Power Factor:</b>	≥ 90% at rated watts*
<b>Total Harmonic Distortion:</b>	≤ 20% at rated watts

\*PF >0.88 for 1C and 1H globes at 02 Lumen Output above 240V

### Surge Protection\*

Standard	Optional
<input type="checkbox"/> 10kV/5kA	<input type="checkbox"/> Secondary 10kV/5kA (R Option)
	<input type="checkbox"/> Secondary 20kV/10kA (T Option)

\*Per ANSI C136.2-2015

### Warranty

☐ 5 Year (Standard) ☐ 10 Year (Optional)

### Luminaire Ambient Temperature Factor (LATF)

Ambient Temp (°C)	Initial Flux Factor	Ambient Temp (°C)	Initial Flux Factor
10	1.02	30	0.99
20	1.01	40	0.98
25	1.00	50	0.97

### Operating Temperature

Globe	Min Ambient Temp (°C)	Max Ambient Temp (°C)	Lumen Output
<b>1C &amp; 1H</b>	-40° -40°	50° 40°	02 to 10 12
<b>1D</b>	-40° -40°	50° 45°	02 to 08 10
<b>1M</b>	-40° -40°	50° 45°	02 to 06 07

### Ratings

<b>Vibration:</b>	1.5G per ANSI C136.41-2010
<b>LM-79:</b>	Testing in accordance with IES Standards
<b>Environmental:</b>	Complies with the material restrictions of RoHS

### Controls

<b>Dimming:</b>	Standard - 0-10V <input type="checkbox"/>
	Optional - DALI (Option U) <input type="checkbox"/>
<b>Sensors:</b>	Photo Electric Sensors (PE) available

### Applications

- Local Roadways
- Parks and Pathways
- Antique Streetscapes
- University and Business Campuses



Not all product variations listed on this page are DLC qualified. Visit [www.designlights.org/search](http://www.designlights.org/search) to confirm qualifications.

# EVOLVE

EPAM Americana  
LED Post Top Lighting

CUSTOMER NAME \_\_\_\_\_

PROJECT NAME \_\_\_\_\_

DATE \_\_\_\_\_ TYPE \_\_\_\_\_

CATALOG NUMBER \_\_\_\_\_

## Ordering Information

### EPAM 01

PROD. ID	GEN	VOLTAGE	LUMEN OUTPUT <sup>4</sup>	DISTRIBUTION	CCT	CONTROLS	GLOBE	GLOBE MATERIAL	FINIAL READY	FINIAL	COLOR	OPTIONS
<b>E = Evolve</b>	01	0 = 120-277V <sup>3</sup>	02	A = Symmetric	30 = 3000K	1 = None	1C = Traditional Standard	A = Acrylic	F = Finial Ready <sup>2</sup>	A = Silhouette	BLCK = Black	F = Fusing
<b>P = Post Top</b>		1 = 120V	04	B = Asymmetric <sup>10</sup>	40 = 4000K	A = ANSI C136.41 7-Pin Receptacle (in Base)	1H = Classic	P = Polycarbonate <sup>6</sup>	X = No Finial Hole or Stud <sup>1</sup>	B = Acorn	DKBZ = Dark Bronze	R = Secondary 10kV/5kA SPD
<b>AM = Americana</b>		2 = 208V	06			D = ANSI C136.41 7-Pin Receptacle (in Base) w/ Shorting Cap	1D = Colony	F = Frosted Acrylic <sup>6,7</sup>		C = Fleur-De-Lis	XXXX = RAL Color	T = Secondary Elevated Surge (20kV/10kA)
		3 = 240V	08			E = ANSI C136.41 7-Pin Receptacle (in Base) w/ non-Dimming PE	1M = Colony w/ Crown & Ribs			E = Blossom		U = DALI Programmable
		4 = 277V	10							F = Spike		V1 = Field Adjustable Module <sup>5</sup>
			12							G = Oak		XXX = Special Options
										X = None		

<sup>1</sup> If globe finial is not desired, choose FINIAL READY = X and FINIAL = X. If FINIAL READY = X, a finial cannot be added later

<sup>2</sup> A Finial is not required to complete order and can be added later

<sup>3</sup> Not Available with Fusing

<sup>4</sup> Globe Choice affects total lumen output. See Spec Table for additional information.

<sup>5</sup> Not available with DALI "U" option

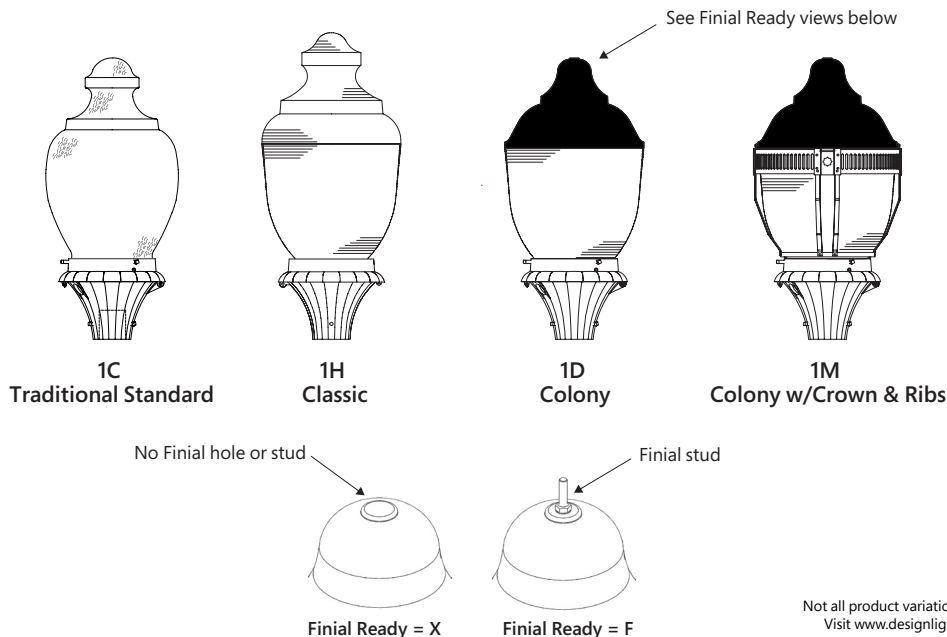
<sup>6</sup> Only available with 1C Globe

<sup>7</sup> Only available without Finial (Finial Ready = X)

<sup>8</sup> Lumen offering 07 is only available with the 1M Globe

<sup>9</sup> Review the Spec Tables for combination of Lumen Output, Distribution, Globe and Globe Material

<sup>10</sup> Not available with 1C Globe



Not all product variations listed on this page are DLC qualified.  
Visit [www.designlights.org/search](http://www.designlights.org/search) to confirm qualifications.





**EPAM Americana**  
LED Post Top Lighting

CUSTOMER NAME \_\_\_\_\_

PROJECT NAME \_\_\_\_\_

DATE \_\_\_\_\_ TYPE \_\_\_\_\_

CATALOG NUMBER \_\_\_\_\_

LUMEN OUTPUT	DIST. CODE	GLOBE	GLOBE MATERIAL	TYPICAL INITIAL LUMENS		TYPICAL SYSTEM WATTAGE 120-277V	BUG RATINGS		TM-21-11 LXX (≥10k) @ HOURS		
				4000K	3000K		4000K	3000K	25,000 HR	50,000 HR	60,000 HR
02	A Symmetric	1C Traditional Standard	A Acrylic	2300	2200	16	B1-U4-G2	B1-U4-G2	L96	L95	L94
04				4500	4400	29	B1-U5-G3	B1-U5-G3	L96	L95	L94
06				6600	6400	44	B2-U5-G3	B2-U5-G3	L95	L93	L92
08				8500	8200	59	B2-U5-G4	B2-U5-G3	L94	L91	L90
10				10600	10300	77	B3-U5-G4	B3-U5-G4	L92	L88	L86
12				12600	12200	97	B3-U5-G5	B3-U5-G4	L87	L78	L75
02	A Symmetric	1C Traditional Standard	P Polycarbonate	2200	2100	16	B1-U4-G2	B1-U4-G2	L96	L95	L94
04				4300	4200	29	B1-U5-G3	B1-U5-G3	L96	L95	L94
06				6300	6100	44	B2-U5-G3	B2-U5-G3	L95	L93	L92
08				8200	7900	59	B2-U5-G4	B2-U5-G4	L94	L91	L90
10				10200	9900	77	B3-U5-G4	B3-U5-G4	L92	L88	L86
12				12100	11700	97	B3-U5-G5	B3-U5-G4	L87	L78	L75
02	A Symmetric	1H Classic	A Acrylic	2200	2200	16	B1-U4-G1	B1-U4-G1	L96	L95	L94
04				4500	4300	29	B2-U5-G2	B2-U5-G2	L96	L95	L94
06				6500	6300	44	B2-U5-G2	B2-U5-G2	L95	L93	L92
08				8400	8200	59	B3-U5-G2	B3-U5-G2	L94	L91	L90
10				10500	10200	77	B3-U5-G3	B3-U5-G3	L92	L88	L86
12				12400	12100	97	B3-U5-G3	B3-U5-G3	L87	L78	L75
02	B Asymmetric	1H Classic	A Acrylic	2200	2100	16	B1-U4-G1	B1-U4-G1	L96	L95	L94
04				4400	4300	29	B1-U5-G2	B1-U5-G2	L96	L95	L94
06				6400	6200	44	B1-U5-G3	B1-U5-G3	L95	L93	L92
08				8300	8000	59	B2-U5-G3	B2-U5-G3	L94	L91	L90
10				10300	10000	77	B2-U5-G3	B2-U5-G3	L92	L88	L86
12				12300	11900	97	B2-U5-G3	B2-U5-G3	L87	L78	L75

For additional information on EPAM IES files, please refer to [LED.com](http://LED.com)



Not all product variations listed on this page are DLC qualified.  
Visit [www.designlights.org/search](http://www.designlights.org/search) to confirm qualifications.



EPAM Americana  
LED Post Top Lighting

CUSTOMER NAME \_\_\_\_\_

PROJECT NAME \_\_\_\_\_

DATE \_\_\_\_\_ TYPE \_\_\_\_\_

CATALOG NUMBER \_\_\_\_\_

LUMEN OUTPUT	DIST. CODE	GLOBE	GLOBE MATERIAL	TYPICAL INITIAL LUMENS		TYPICAL SYSTEM WATTAGE	BUG RATINGS		TM-21-11 LXX (≥10k) @ HOURS		
				4000K	3000K	120-277V	4000K	3000K	25,000 HR	50,000 HR	60,000 HR
02	A Symmetric	1D Colony*	A Acrylic	2800	2700	23	B2-U3-G1	B2-U3-G1	L96	L94	L93
04				4600	4500	37	B2-U3-G2	B2-U3-G2	L96	L94	L93
06				6100	5900	50	B3-U4-G2	B3-U4-G2	L94	L91	L90
08				7800	7600	66	B3-U4-G3	B3-U4-G3	L92	L88	L87
10				9500	9200	86	B3-U5-G3	B3-U4-G3	L87	L79	L76
02	B Asymmetric	1D Colony*	A Acrylic	2800	2700	23	B1-U3-G2	B1-U3-G2	L96	L94	L93
04				4600	4500	37	B2-U3-G3	B2-U3-G3	L96	L94	L93
06				6100	5900	50	B2-U4-G3	B2-U4-G3	L94	L91	L90
08				7800	7600	66	B2-U4-G3	B2-U4-G3	L92	L88	L87
10				9500	9200	86	B3-U4-G3	B3-U4-G3	L87	L79	L76
02	A Symmetric	1M Colony w/ Crown & Ribs	A Acrylic	1900	1900	23	B1-U3-G1	B1-U3-G1	L96	L94	L93
04				4200	4100	50	B2-U3-G1	B1-U3-G2	L94	L91	L90
06				6100	5900	77	B3-U3-G2	B2-U3-G2	L90	L84	L81
07				6600	6400	86	B3-U3-G2	B3-U3-G2	L87	L79	L76
02	B Asymmetric	1M Colony w/ Crown & Ribs	A Acrylic	1900	1900	23	B1-U3-G1	B1-U3-G1	L96	L94	L93
04				4200	4100	50	B1-U3-G2	B1-U3-G2	L94	L91	L90
06				6100	5900	77	B2-U3-G3	B2-U3-G2	L90	L84	L81
07				6600	6400	86	B2-U3-G3	B2-U3-G3	L87	L79	L76

For additional information on EPAM IES files, please refer to [LED.com](http://LED.com)



Not all product variations listed on this page are DLC qualified.  
Visit [www.designlights.org/search](http://www.designlights.org/search) to confirm qualifications.



# EVOLVE

EPAM Americana  
LED Post Top Lighting

CUSTOMER NAME \_\_\_\_\_

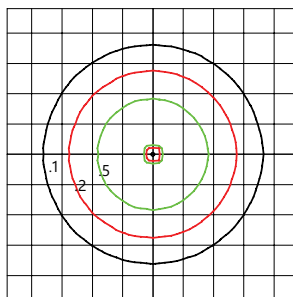
PROJECT NAME \_\_\_\_\_

DATE \_\_\_\_\_ TYPE \_\_\_\_\_

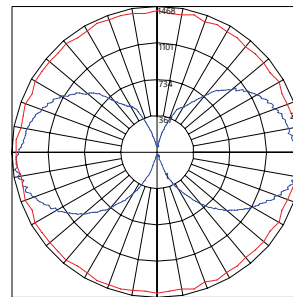
CATALOG NUMBER \_\_\_\_\_

## EPAM Symmetric

12,600 Lumens  
4000K  
EPAM01\_12A40-1CA\_\_IES



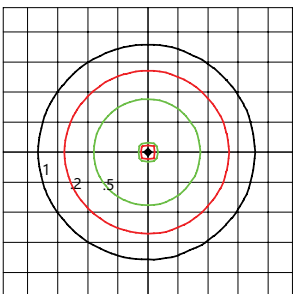
- Mounting Height at 16'
- Initial Footcandle at Grade



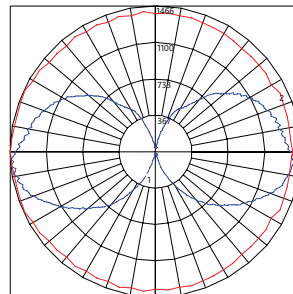
- Vertical plane at max Cd horiz. angle 5°
- Horizontal cone at max Cd vert. angle 87°

## EPAM Symmetric

12,100 Lumens  
4000K  
EPAM01\_12A40-1CP\_\_IES



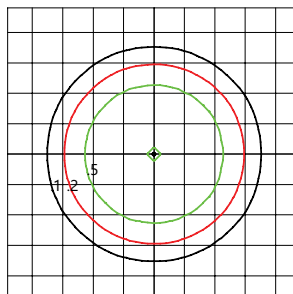
- Mounting Height at 16'
- Initial Footcandle at Grade



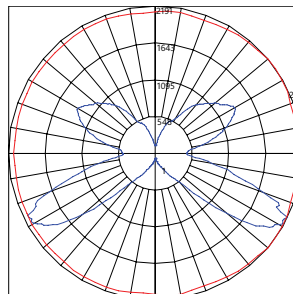
- Vertical plane at max Cd horiz. angle 180°
- Horizontal cone at max Cd vert. angle 84°

## EPAM Symmetric

12,400 Lumens  
4000K  
EPAM01\_12A40-1HA\_\_IES



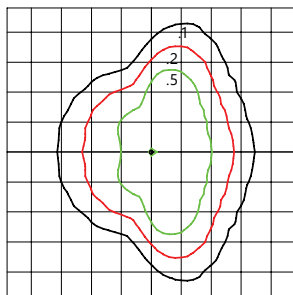
- Mounting Height at 16'
- Initial Footcandle at Grade



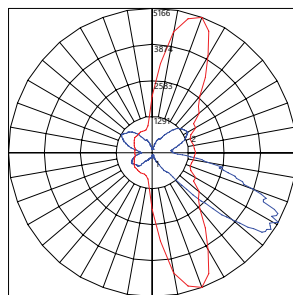
- Vertical plane at max Cd horiz. angle 40°
- Horizontal cone at max Cd vert. angle 64°

## EPAM Asymmetric

12,300 Lumens  
4000K  
EPAM01\_12B40-1HB\_\_IES



- Mounting Height at 16'
- Initial Footcandle at Grade



- Vertical plane at max Cd horiz. angle 70°
- Horizontal cone at max Cd vert. angle 61°

# EVOLVE

EPAM Americana  
LED Post Top Lighting

CUSTOMER NAME \_\_\_\_\_

PROJECT NAME \_\_\_\_\_

DATE \_\_\_\_\_ TYPE \_\_\_\_\_

CATALOG NUMBER \_\_\_\_\_

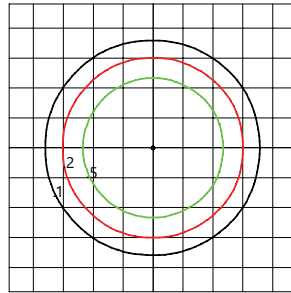
## EPAM

### Symmetric

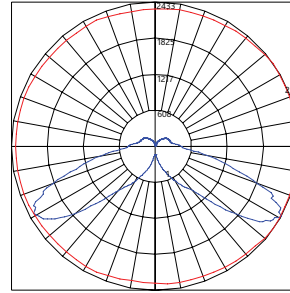
9,500 Lumens

4000K

EPAM01\_10A40-1DA\_\_IES



- Mounting Height at 16'
- Initial Footcandle at Grade



- Vertical plane at max Cd horiz. angle 61°
- Horizontal cone at max Cd vert. angle 35°

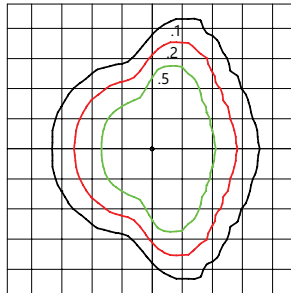
## EPAM

### Asymmetric

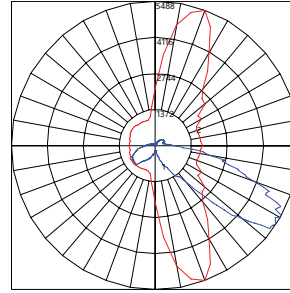
9,500 Lumens

4000K

EPAM01\_10B40-1DB\_\_IES



- Mounting Height at 16'
- Initial Footcandle at Grade



- Vertical plane at max Cd horiz. angle 70°
- Horizontal cone at max Cd vert. angle 61°

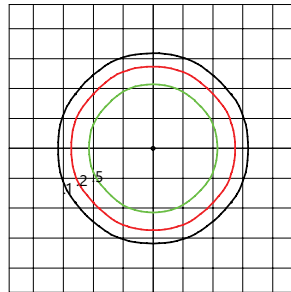
## EPAM

### Symmetric

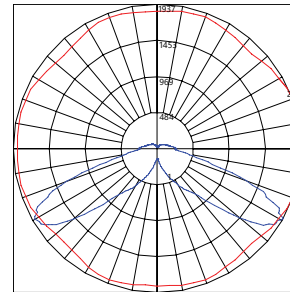
6,600 Lumens

4000K

EPAM01\_07A40-1MA\_\_IES



- Mounting Height at 16'
- Initial Footcandle at Grade



- Vertical plane at max Cd horiz. angle 61°
- Horizontal cone at max Cd vert. angle 20°

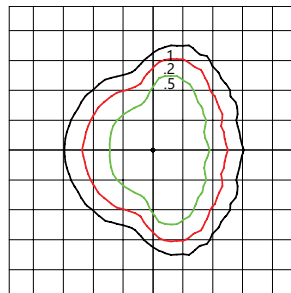
## EPAM

### Asymmetric

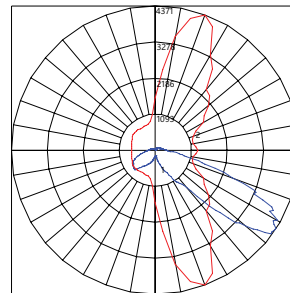
6,600 Lumens

4000K

EPAM01\_07B40-1MB\_\_IES



- Mounting Height at 16'
- Initial Footcandle at Grade



- Vertical plane at max Cd horiz. angle 70°
- Horizontal cone at max Cd vert. angle 57°



# EVOLVE

## EPAM Americana

### LED Post Top Lighting

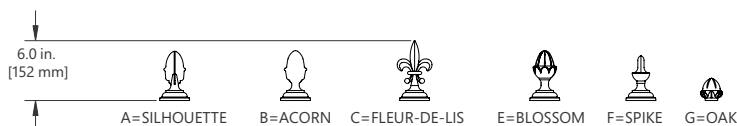
CUSTOMER NAME \_\_\_\_\_

PROJECT NAME \_\_\_\_\_

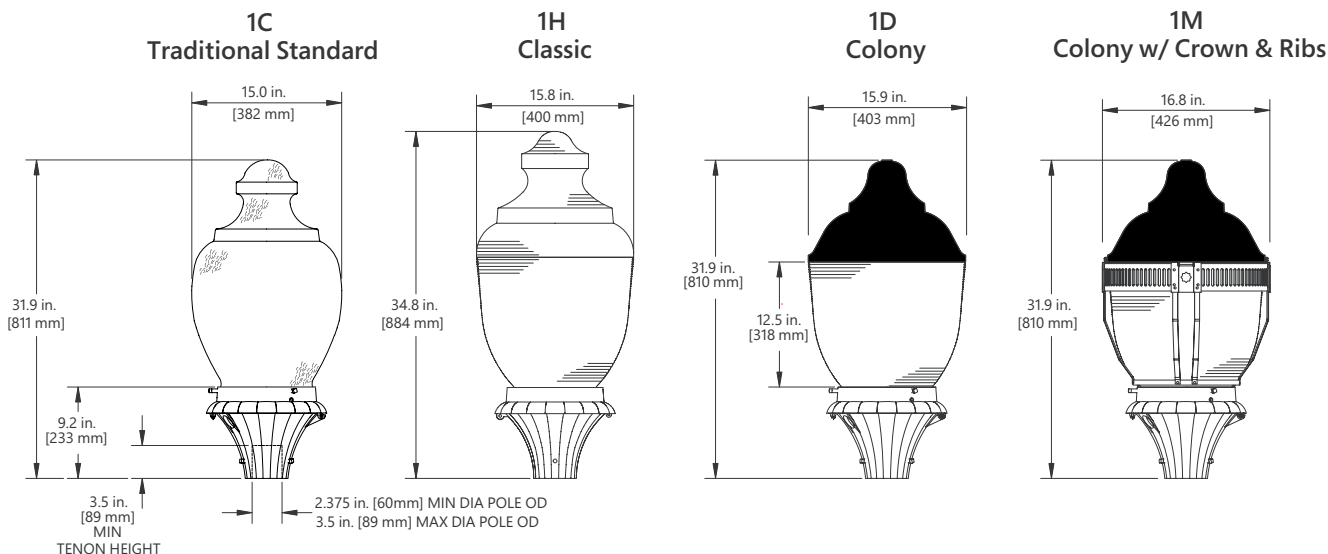
DATE \_\_\_\_\_ TYPE \_\_\_\_\_

CATALOG NUMBER \_\_\_\_\_

### FINIAL



### GLOBE



### Weight

- < 20 lbs (9.07 kgs)

### Effective Projected Area

- 1.4 sq ft max (0.13 sq M max)

### Suggested Mounting Height

- 8-16 ft. (2.5-5 M)

### Mounting

- Post top mounting for 2.375 in. (60mm) MIN – 3.5 in. (89mm) MAX diameter by 3.5-inch MIN vertical tenon secured with three square head set screws

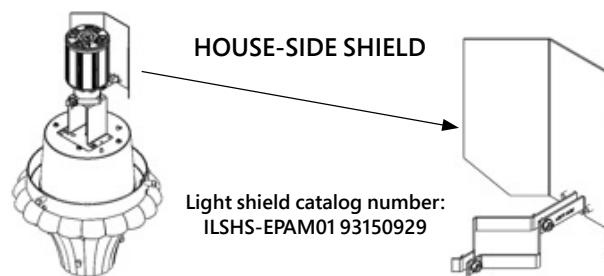
### Accessories

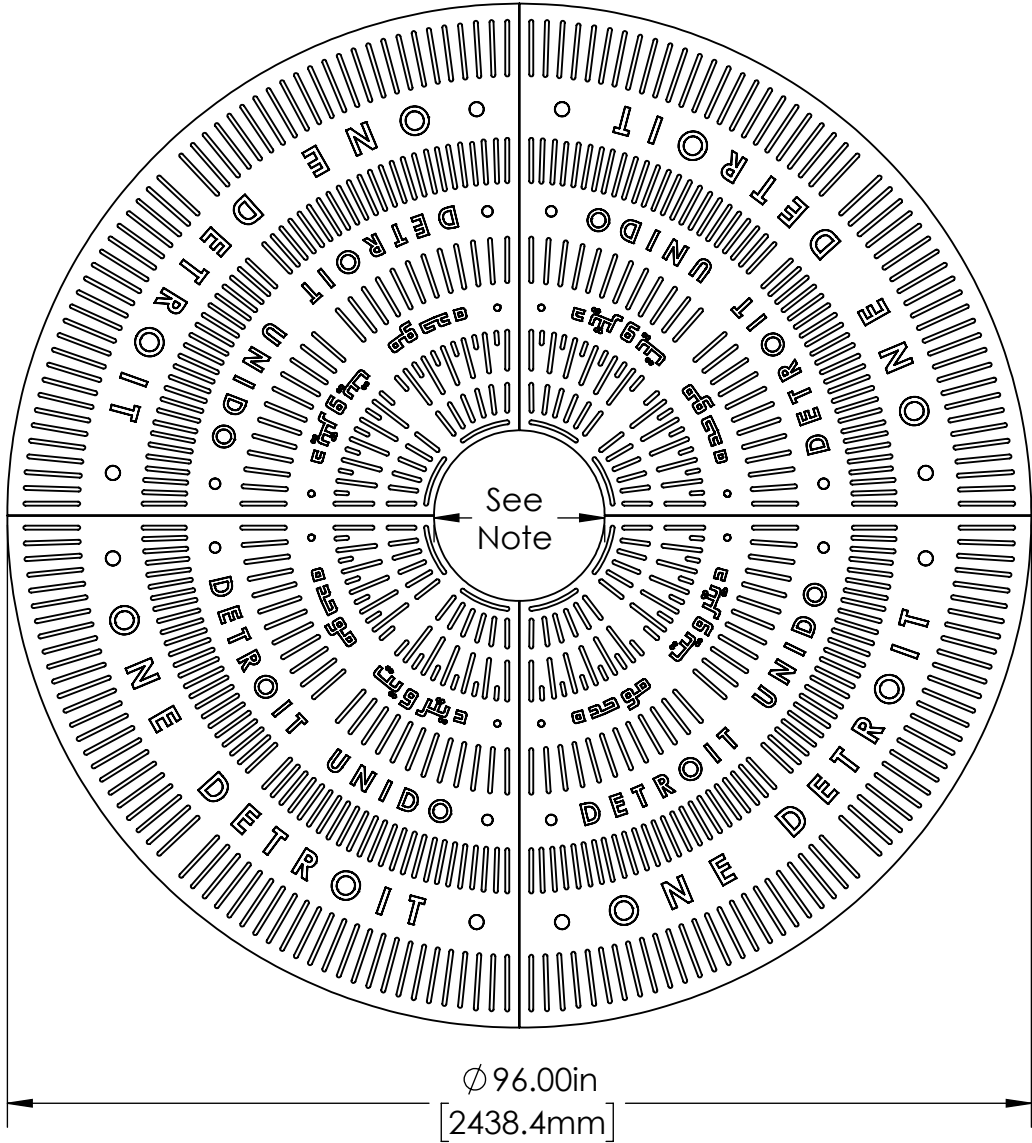
SAP NUMBER	PART NUMBER	DESCRIPTION
93029237	PED-MV-LED-7	ANSI C136.41 Dimming PE, 120-277V
28299	PEC0TL	Standard 120-277V
73251	SCCL-PECTL	Shorting Cap

### Available Finials if ordered separately

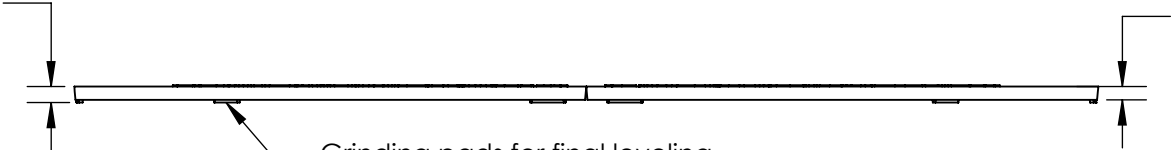
MATERIAL DESCRIPTION	COLOR*	MATERIAL
FNLBL-ACN	BLACK	126817
FNLBL-BLS	BLACK	126819
FNLBL-FDL	BLACK	126812
FNLBL-OAK	BLACK	170102
FNLBL-SIL	BLACK	126816
FNLBL-SPK	BLACK	126818

\*Contact Factory for different finial colors





1.50in  
[38.1mm]



Grinding pads for final leveling

**9605-2 - ONE DETROIT  
STARBURST-2  
Tree Grate**

96" Round Tree grate in  
four sections for pedestrian  
loads only

3/8" Maximum slot opening  
for A.D.A. compliance and  
pedestrian safety

Cast from 100% recycled  
gray iron.

Tree opening:  
16", 18", 28", 35" Grates  
can be ordered with or  
later expanded to these  
openings. Please specify  
when ordering.

Finish: Unfinished

Use frame model:  
9601F-CS

Weight:  
Iron = 900 lb / 409 Kg

DO NOT SCALE DRAWING

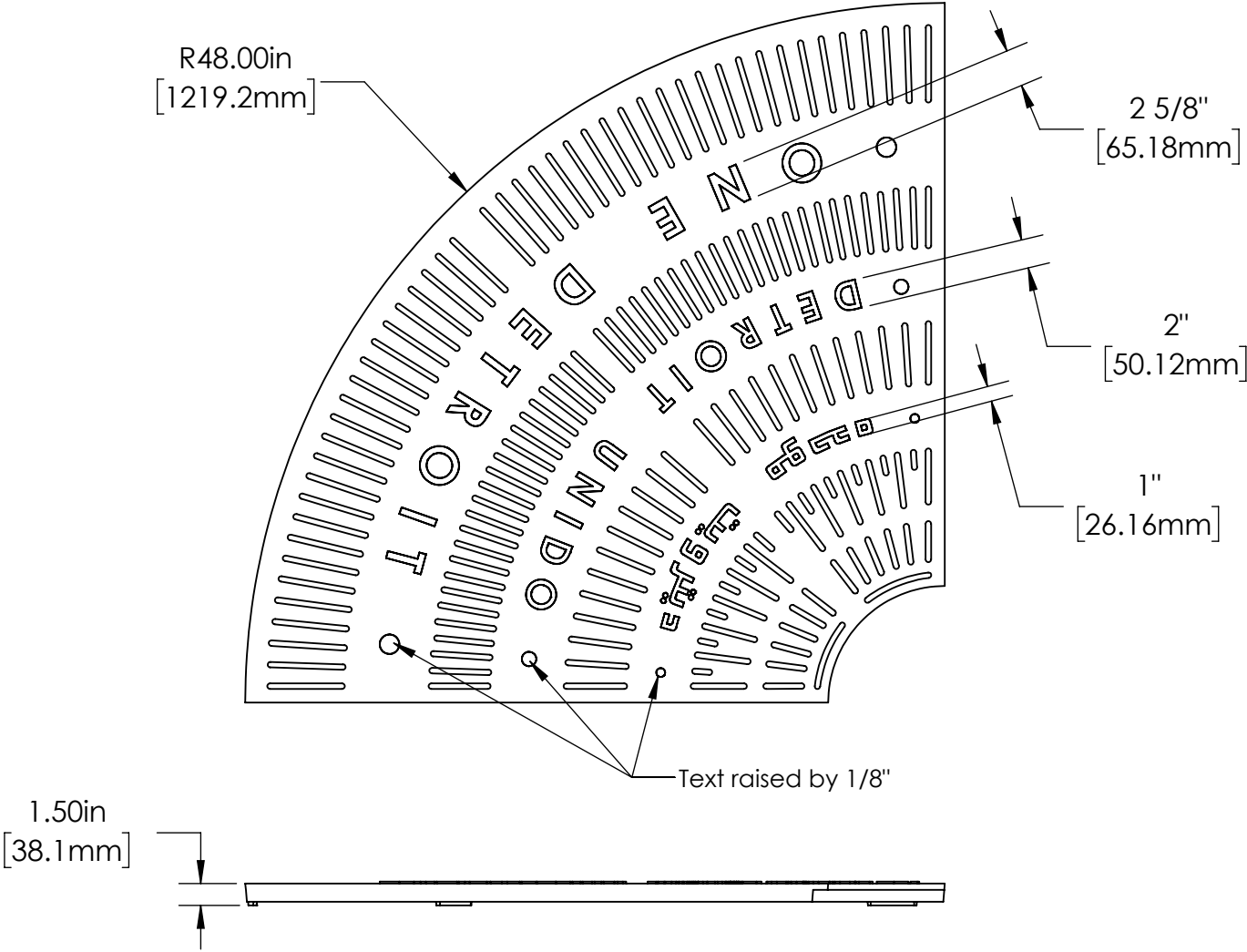
**IRONSMITH**

41-701 Corporate Way #3  
Palm Desert, CA 92260  
(800) 338-4766  
(760) 776-5080 Fax

**PROPRIETARY AND CONFIDENTIAL**

This drawing embodies a confidential design of IRONSMITH, INC. Palm Desert, CA. All design, manufacturing, reproduction, use, sale, and other rights regarding the same are expressly reserved. This drawing is submitted under confidential relationship for a specific purpose and the recipient agrees by accepting this drawing not to supply or disclose any information regarding it to any unauthorized person or to incorporate any special feature peculiar to this design in other projects. The information in this drawing may be covered completely or in part by patents pending.





9605-2 - One Detroit 96"  
Round Custom Tree Grate.

3/8" Maximum slot opening for  
A.D.A. compliance and  
pedestrian safety.

Tree opening: 12"- 35"  
Grates can be ordered with  
or  
later expanded to these  
openings.

From 100% recycled gray  
iron  
Finish: Unfinished  
Use frame model: 9601F-CS

DO NOT SCALE DRAWING

**IRONSMITH**

41-701 Corporate Way #3  
Palm Desert, CA 92260  
(800) 338-4766  
(760) 776-5080 Fax

**PROPRIETARY AND CONFIDENTIAL**

This drawing embodies a confidential design of IRONSMITH, INC. Palm Desert, CA. All design, manufacturing, reproduction, use, sale, and other rights regarding the same are expressly reserved. This drawing is submitted under confidential relationship for a specific purpose and the recipient agrees by accepting this drawing not to supply or disclose any information regarding it to any unauthorized person or to incorporate any special feature peculiar to this design in other projects. The information in this drawing may be covered completely or in part by patents pending.