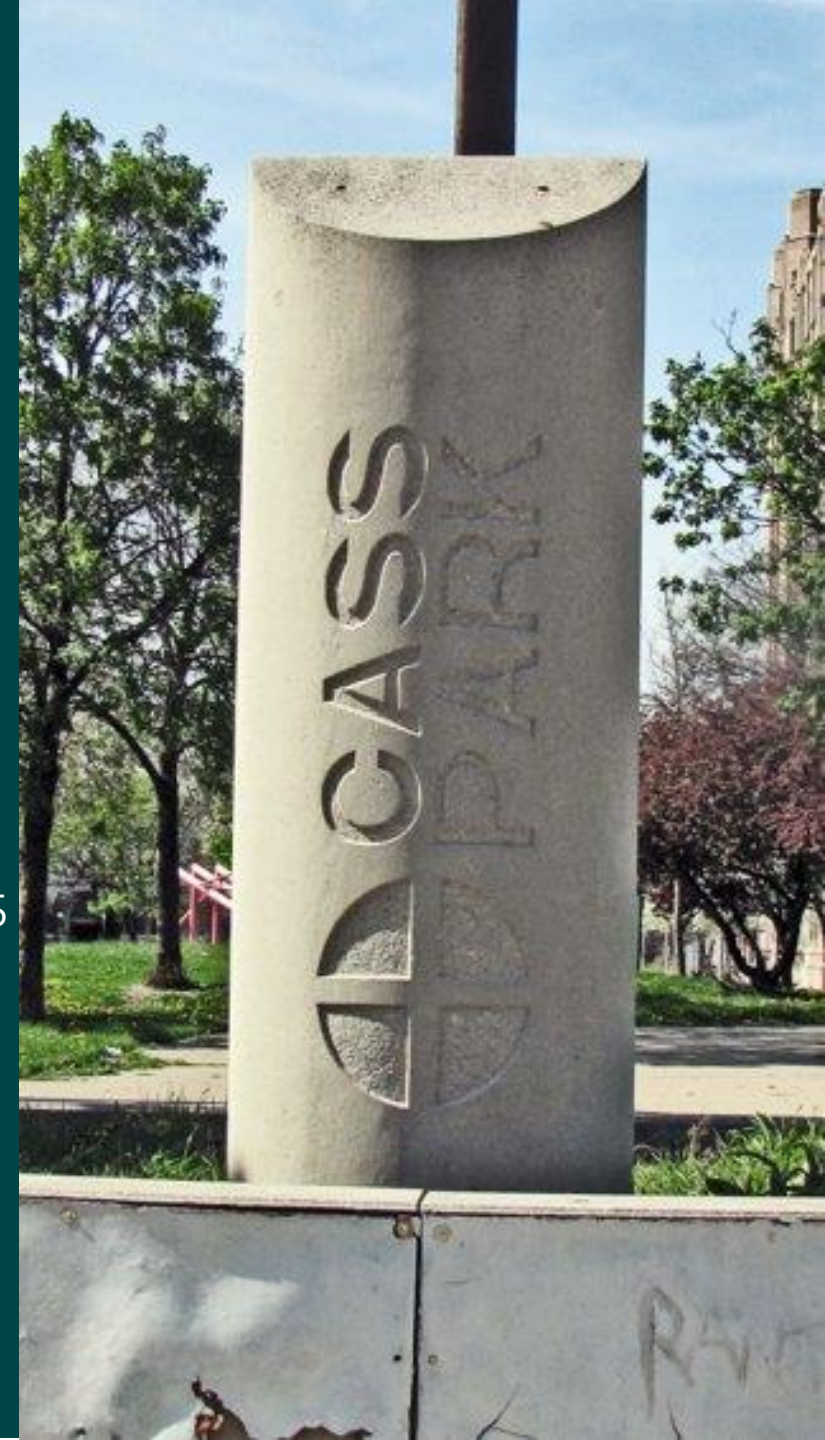


CASS PARK: Community Engagement Summary

COMMUNITY OUTREACH SCHEDULE:

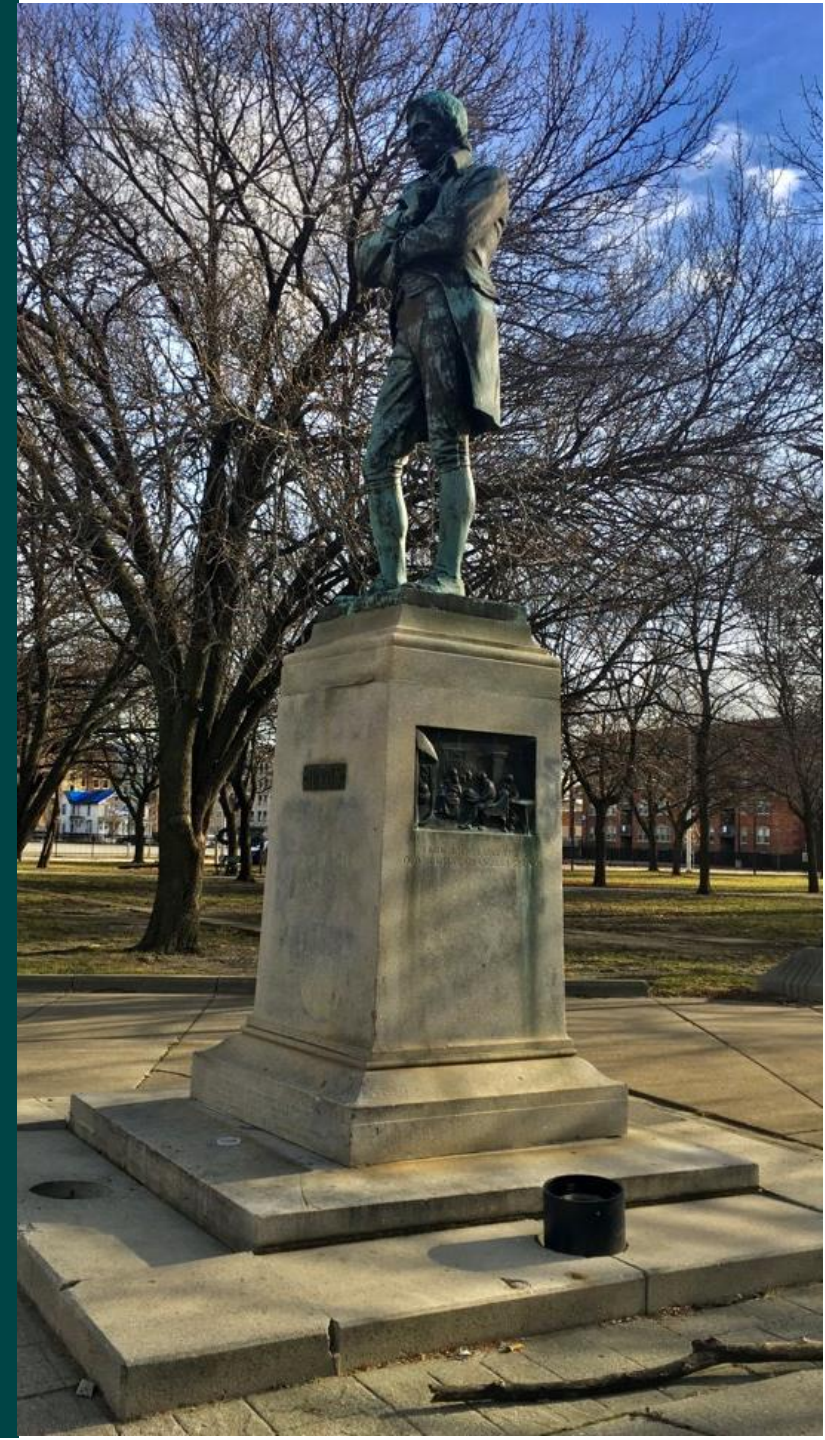
- General Stakeholder Meeting - Oct. 18, 2024
- **Community Meeting #1** - Nov. 14, 2024
- Stakeholder Meeting with Robert Burns Club - Jan. 29, 2025
- Student Survey – March through April 2025
- Stakeholder Meeting with Food Distribution Group – Mar. 17, 2025
- Stakeholder Meeting with Cass Tech PTSA – Mar. 20, 2025
- **Community Meeting #2** – Mar. 26, 2025



CASS PARK: Community Engagement Summary

ENGAGED STAKEHOLDERS:

- The Masonic Temple
- Mariners Inn
- Cass Tech Leadership, PSTA
- Chinatown Vision Committee
- Olympia
- Residents (from prev. community benefits group)
- Robert Burns Club
- Residents that live on the park (2714 Second)
- Park Users
- Food Distribution Group
- Cass Tech Students



TIMELINE

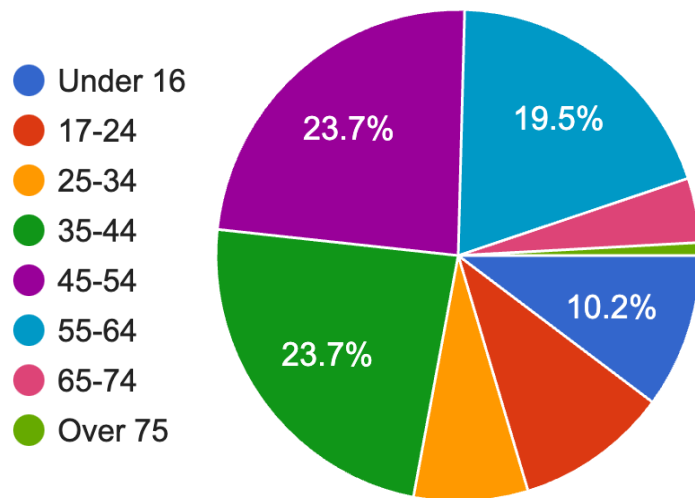
PARK IMPROVEMENTS AT CASS PARK



WHAT WE HEARD: Who Responded

SURVEY

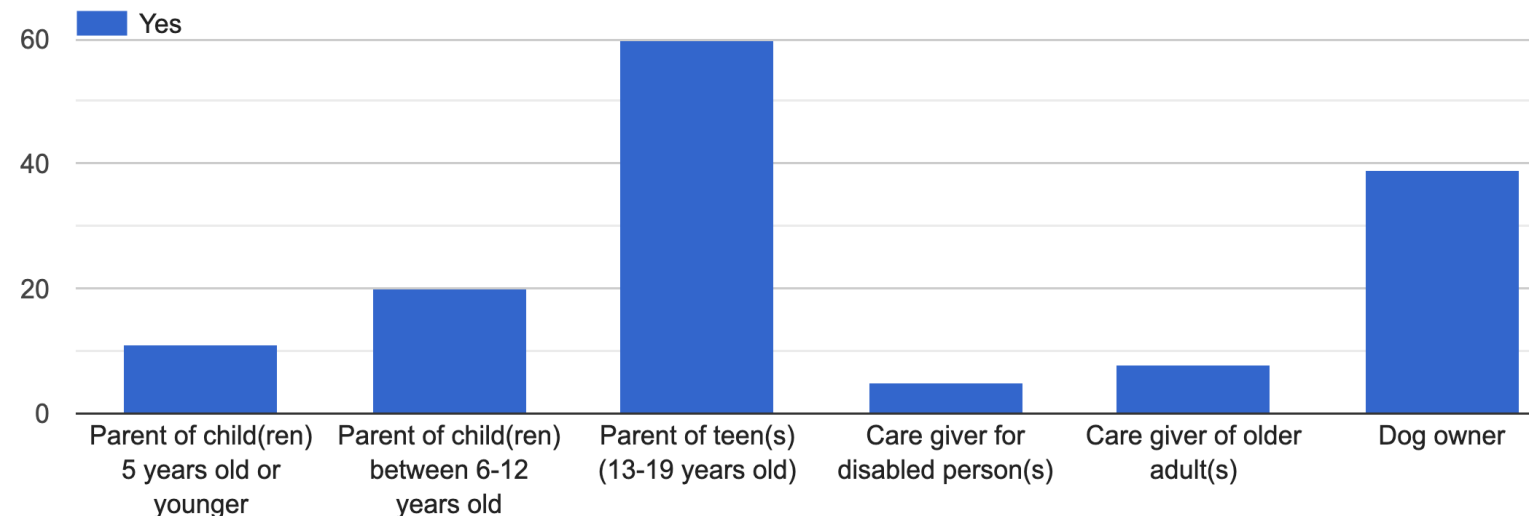
- 124 responses
- Nearly a quarter were youth
- Over half were parents of teens
- Majority (70%) identified as African American



11/14 COMMUNITY MEETING

Attendees representing:

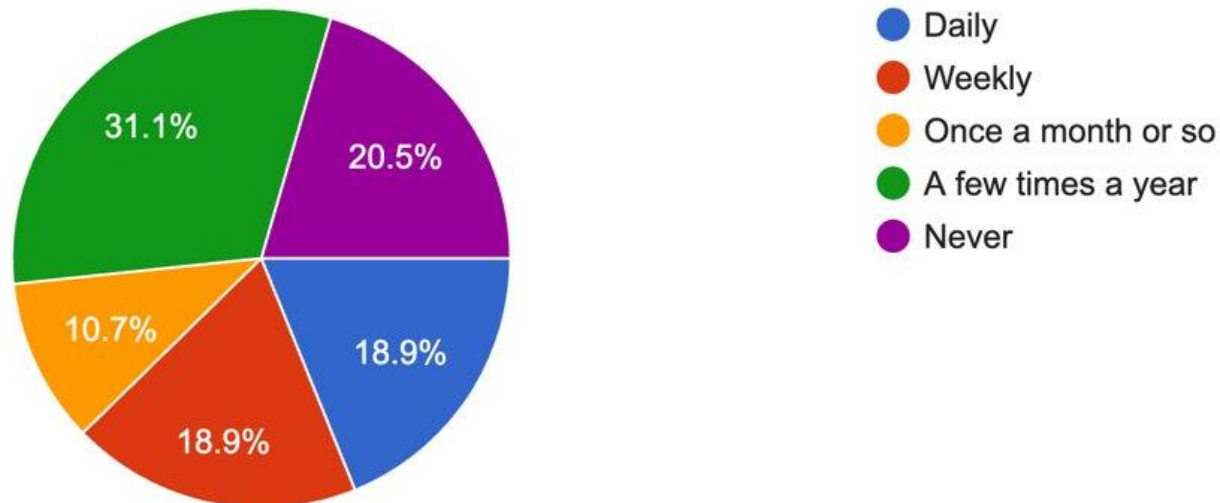
- Cass Tech PTSA
- the Triangle Society
- Olympia Development
- Robert Burns Club
- the Masonic Temple
- the Planning Department
- Chinatown Vision Committee
- Neighborhood residents



WHAT WE HEARD: Survey Results

Park Use:

- Most people **walk (47%)** or **drive (41%)** to the park, only 5% reported biking.
- The main concerns are:
 - #1) **The park does not offer what people want (56%)**
 - #2) **Safety issues (52%)**
- Mix of how often people use the park:



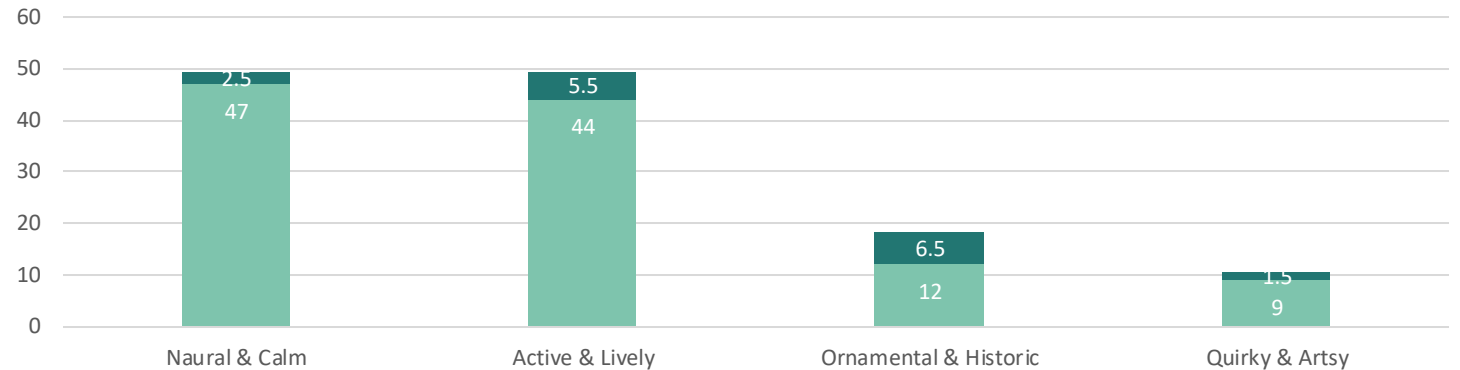
WHAT WE HEARD: All Results

Park Atmosphere:

ATMOSPHERE	Survey	Stakeholders	TOTAL
Natural & Calm	47	2.5	39%
Active & Lively	44	5.5	39%
Ornamental & Historic	12	6.5	14%
Quirky & Artsy	9	1.5	8%

- Evenly split between natural and active
- Stakeholders were more supportive of ornamental/historic
- + 11 write-ins of folks wanting a combination of atmospheres

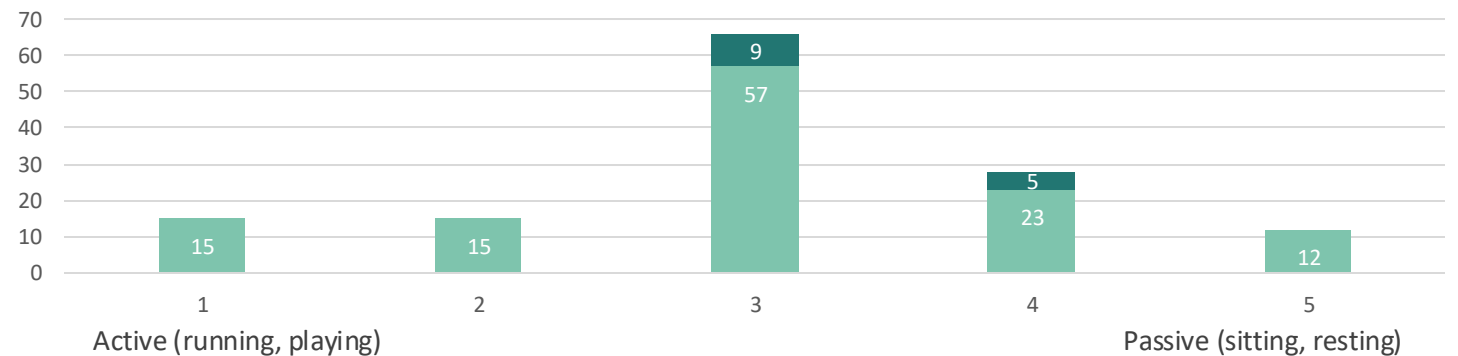
Park Atmosphere



Passive vs Active:

ACTIVE VS PASSIVE	Survey	Stakeholders	TOTAL
1	15		11%
2	15		11%
3	57	9	49%
4	23	5	21%
5	12		9%

Active vs Passive



- Most respondents want a mix of passive and active spaces in the park

WHAT WE HEARD: Community Meeting Summary

What do you like best:

- Trees/shade
- Resting spot
- Historic
- Walkable
- Location (x2)
- Greenspace
- Burns statue

One thing you would change:

- Lighting (x4)
- Trash
- Seating / communal spaces
- Study tables / education area
- Games area
- Tech chargers
- Walkways

Other notes:

- Trash concerns
- Pathway issues
- Add a water feature
- Provide seating
- Historical signage
- Infrastructure to support family-friendly events (farmers market, art fair, festivals, yoga)
- Vendor stage with electric
- Shelter/gazebo
- Education area
- Games area
- Consider solar
- Waiting/hangout area for students
- Open space for student activities (sports, arts, etc.)
- Burns Statue
 - Add interpretive sign
 - Protect it from traffic
 - Holes in base (old light sockets)

WHAT WE HEARD: Survey Results

Write-ins:

- Want **event space for local groups**, Mariner's Inn family BBQ, food distribution Sundays, Cass Tech student plays, etc., but NOT really large events with bright lighting or loud music.
- Want to keep the mature **trees**
- More and better **seating**, with a mix of more active hangout space and quiet restful areas
- Less focus on playing with younger kids and more on accommodating Cass Tech student programs, provide space for Cass **athletics**, soccer, running, etc.
- Requests for updated **fitness equipment**
- Mixed comments on dogs – some say there are enough dog parks others ask that it be **dog-friendly** (but not a dog park)
- Currently not inviting, concerns with **trash**
- Mixed on supporting **homeless population**, versus not feeling comfortable in the park because of people sleeping in the park. Widespread support of the food distribution program

WHAT WE HEARD: Survey Results

What would you like to do in Cass Park:

- #1) **Socializing** (76%)
- #2) **Relaxing in nature** (75%)
- #3) **Exercising** (59%)
- #4) **Walking or biking** (58%)
- #5) Playing with kids (40%)
- #6) Cultural programming (39%)
- #7) View art installations (38%)
- #8) Event space (27%)

What are your top priorities for Cass Park?

- #1) **Add gardens/landscaping** (60%)
- #2) **Add lighting** (55%)
- #3) **Fix walkways** (52%)
- #4) **Replace old seating** (46%)
- #5) Create a hangout area (35%)
- #6) Install/repair art (31%)
- #7) Reimagine the historic fountain (31%)
- #8) Create a space for events (21%)
- #9) Add shade/shelters (20%)
- #10) Install educational signs (15%)

WHAT WE HEARD: Community Meeting Results

Entries:

- View art x6
- Socialize x4
- Add gardens/landscaping
- Burns Statue
 - Repair statue x3
 - Protect it from traffic
 - Fix holes (old lights)

Perimeter:

- Add a walking loop x 6
- Make safe, beautiful, welcoming
- Play x2

Center:

- Add a central focal point x2
- Add a water feature x2
- Add gardens/landscaping
- Accommodate food distribution
- Watch events x7
- Cultural programs x4



NW Quad:

- Relax x5
- Socialize x2

NE Quad

- Cultural programs
- Watch events x2
- Socialize
- Exercise

SW Quad:

- Play x2
- Exercise x5
- Add a shelter

SE Quad

- Art, pop-ups
- Relax

WHAT WE HEARD: Community Meeting Results

Entries:

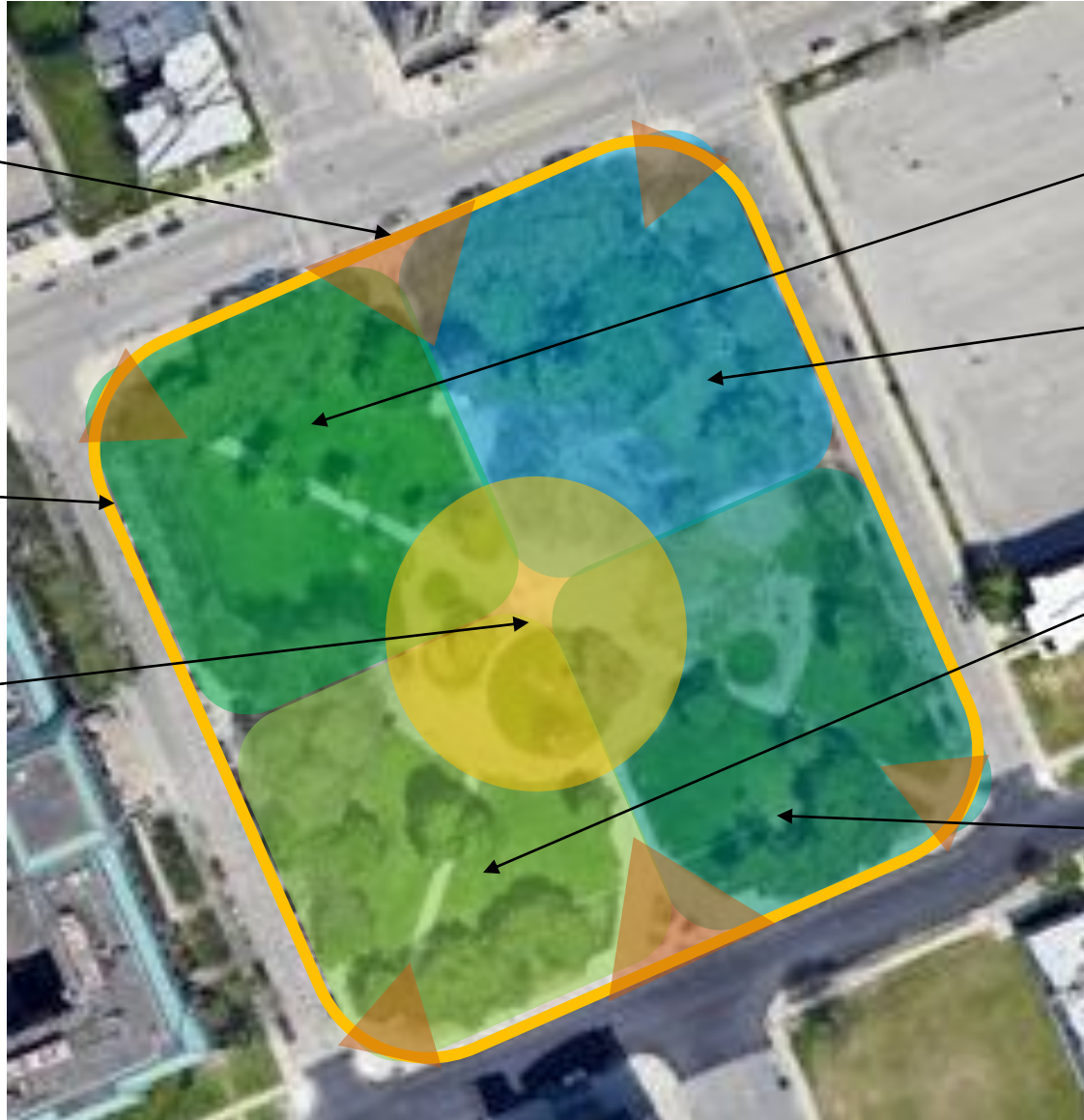
- View art x6
- Socialize x4
- Add gardens/landscaping
- Burns Statue
 - Repair statue x3
 - Protect it from traffic
 - Fix holes (old lights)

Perimeter:

- Add a walking loop x 6
- Make safe, beautiful, welcoming
- Play x2

Center:

- Add a central focal point x2
- Add a water feature x2
- Add gardens/landscaping
- Accommodate food distribution
- Watch events x7
- Cultural programs x4



NW Quad:

- Relax x5
- Socialize x2

NE Quad

- Cultural programs
- Watch events x2
- Socialize
- Exercise

SW Quad:

- Play x2
- Exercise x5
- Add a shelter

SE Quad

- Art, pop-ups
- Relax

WHAT WE HEARD: Community Meeting Results



WHAT WE HEARD: Targeted Outreach

Robert Burns Club:

- Keep statue where it is, historical location
- Statue only needs cleaning
- Non-historic base needs repair (especially the non-functioning lighting elements)
- Want to protect the statue from future car hits (caused the base to be skewed)\
- Positive about the plan for the park

Cass Tech PTSA:

- Want amenities that reflect what Cass students and families would use: charging stations, exercise equipment, esp. stationary bikes
- Create places for student to hang out, possible stage for small performances
- Connections – look into motorized scooter or city bike station in the park
- Overall like the concept and plan, excited for the upcoming improvements

Food Distribution Group

- Has served food on the 2nd and 4th Sunday of the month in Cass Park for over a decade
- Uses the middle of the park because it has open space and concrete, would be willing to move (and not drive vehicles in the park) if there was a space on the eastern edge that could accommodate them
- Snow can be an issue, relocating to the edge of the park could help
- Their ideal park would include: space for picnics and bbq's, gardens with fragrant flowers and plants, "little grace notes" amidst a harder edge space, hang out space