



City of Detroit - Planning & Development Department  
2 Woodward Avenue, Suite 808  
Detroit, Michigan 48226

# HISTORIC DISTRICT COMMISSION ADDITIONAL INFORMATION REQUEST

**Date:** 05/05/2025

**Application Number:** HDC2025-00192

## APPLICANT & PROPERTY INFORMATION

<b>NAME:</b> Kayode Adekoya		<b>COMPANY NAME:</b> N/A	
<b>ADDRESS:</b> 36975 EVERETT DR	<b>CITY:</b> WESTLAND	<b>STATE:</b> MI	<b>ZIP:</b> 48185
<b>PROJECT ADDRESS:</b> 3751 Leslie Street			
<b>HISTORIC DISTRICT:</b> Russell Woods-Sullivan			

## REQUESTED INFORMATION

We have received your application, but it is not yet complete for review. Please provide additional details based on the comments and questions listed below. Should you need to attach additional files per this request, use the paperclip icons at the end of this form. You may attach up to (5) files per icon up to 25MB:

Thank you! This application is not complete. Please confirm the total scope of work for this application (with "•" symbol) and provide additional information (with "►" symbol):

- Add polyurethane, white door heading and polyurethane, white pilasters
- Replacement of front door and security door (work done without approval)
  - Product information with the specific material, design, colorway, and finish of front door (screenshot of product information is OK, but website links are not)
  - Product information with the specific material, design, colorway, and finish of security door (screenshot of product information is OK, but website links are not)
- Rebuild of front porch, including historic brick flower bed (work done without approval)
- Add railings to front porch/steps
  - Dimensions needed on product photo provided in initial application
- Replacement of 8 historic windows (work done without approval)
- Add black aluminum wrap to windows
- Add black shutters
  - Product information with the specific material, design, colorway, and finish of proposed shutters (screenshot of product information is OK, but website links are not)
- Add flower bed
  - Landscape site plan with types of plants, materials, and dimensions (this can be hand drawn)
- Replacement of concrete driveway (work done without approval)
- Erect wood fence (work done without approval)

PSR: 250505LS

## APPLICANT RESPONSE

Response Date: 05/05/2025



Please find below all the requested information. Thanks for your time.

- \* Add polyurethane, white door heading and polyurethane, white pilaster-Yes confirmed
  - ▶ For Door Heading & Pilaster- See attached-Pictures of Handrail\_ Door Cross Head\_ Pilasters
- \* Replacement of Front Door and Security (Storm) door (Work Done without approval)- Yes confirmed
  - ▶ For Door - See attached-Product Details Door and Security (Storm) Door
  - ▶ For Security (Storm) Door - See attached-Product Details Door and Security (Storm) Door
- \* Rebuild of damaged front porch, including historic brick flower bed (work done without approval)- Yes confirmed
  
- \* Add railing to the front Porch/steps - Yes confirmed
  - ▶ For Railings Dimensions- See attached-Pictures of Handrail\_ Door Cross Head\_ Pilasters
  
- \* Replacement of 8 historic windows (Work done without approval) - Yes confirmed
- \* Add black aluminum wrap to windows - Yes confirmed
- \* Add Black shutters - Yes confirmed
  - ▶ For Shutters Product details See attached -Product Details for Shutters
- \* Add Flower Bed - Yes confirmed
  - ▶ For Landscape Site plan with types of plants, materials and dimensions- See attached- Landscape Site Plan
- \* Replacement of Concrete driveway (Work done without approval) - Yes confirmed
  - \* Erect wood fence (work done without approval) - Yes confirmed

Product information for Polyurethane, white door heading and Polyurethane, white pilaster

Order Details			×
Description:	Menards® SKU#	Quantity	
FYPON001 Special Order Vendor Part #: WCH54X12T Size: Overall 59-1/2"W x 12"H Color: Primed White Smooth-Ready-to-Paint Fypon® Overall 59-1/2"W x 12"H Polyurethane Window & Door Crosshead with Trim Strip	4000138	1	
FYPON001 Special Order Vendor Part #: PIL5X82 Size: 5-1/4"W x 82"H Color: Primed White Smooth-Ready-to-Paint Fypon® 5-1/4"W x 82"H Primed Polyurethane Fluted Pilasters with Plinth - 1 Pair	4000138	2	





Bring

## Product information for Handrail



Hover Image to Zoom

[Share](#)

### Product Details

#### About This Product

Our outdoor stair handrails provide extra safety for all types of people who use stairs. Whether it is the elderly with limited mobility, children who have difficulty climbing stairs, or other people with limited mobility, they can rely on this sturdy and durable handrail for stable support and protection. Made of high-quality materials, this handrail can withstand the test of various weather conditions. Its simple and elegant design style can be perfectly integrated with different styles of architecture. It is very suitable for installation in outdoor places such as gardens, residential buildings, hotels, etc., creating a safer and more comfortable environment for users.

#### Highlights

- Unique design- our stair handrail has a unique design concept, which has been rigorously tested and verified to provide users with reliable support, its exquisite craftsmanship and high-quality materials ensure the durability and safety of the handrail
- Easy to install- our carefully packaged stair handrails include all the tools, parts and hardware needed for assembly, a detailed installation guide is also included to help you install the handrail in a short time

high-quality materials ensure the durability and safety of the handrail

- Easy to install- our carefully packaged stair handrails include all the tools, parts and hardware needed for assembly, a detailed installation guide is also included to help you install the handrail in a short time
- Safe and durable- our handrails are carefully built to meet strict construction standards, our handrail kits ensure consistency and durability, they are designed to withstand significant loads
- Wide application- our handrails are not only suitable for indoor and outdoor stairs, but also multi-functional stair handrails for commercial, industrial and residential projects, thereby increasing safety and accessibility
- Easy to maintain- this handrail is not only durable, but also easy to clean and maintain, the handrail surface is treated with professional grade treatment to make it smoother and easier to remove dust
- [Return Policy](#)

### Product Information

Internet # 332622208

Model # BL8500526F

UPC Code # 717632557955



**Specifications**

Dimensions: H 36 in, W 44 in, D 36 in

**Dimensions**

Assembled Depth (in.)	36 in
Assembled Height (in.)	36 in
Assembled Width (in.)	44 in

**Details**

Accessory Type	Shelving
Material	Metal
Product Weight (lb.)	32.52 lb
Returnable	90-Day

**Warranty / Certifications**

Manufacturer Warranty	6 months
-----------------------	----------

How can we improve our product information? Provide feedback.

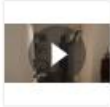
## Product Details- Door and Security Door

### Exterior Door

Feather River Doors

**37.5 in. x 81.625 in. 6 Lite Craftsman Stained Chestnut Mahogany Right-Hand Inswing Fiberglass Prehung Front Door**

★★★★★ (405) Questions & Answers (96)



Hover Image to Zoom



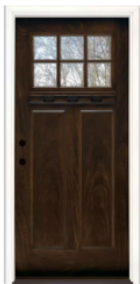
## About This Product

Feather River Doors 6 Lite Clear Craftsman with Dentil Shelf is a Mahogany Woodgrain Fiberglass Door Pre-Finished in Chestnut. This classic design will provide instant curb appeal to any opening and has the true Craftsman look with matching Dentil Shelf. The rich Mahogany Woodgrain Texture is patterned off a true wood door design to give the door the warmth and feel of wood with the long lasting benefits of fiberglass- This door is True Elegance. This door has all the long lasting benefits associated with Fiberglass Doors, a great look, along with a load of Features and Benefits usually viewed as upgrades with other doors plus Energy Efficient and ENERGY STAR Qualified. Door Spec: 36 in. x 80 in. Prehung Door, 4-9/16 in. Primed Jamb, Right Hand Inswing, Fits Rough Opening of 38-1/4 in. x 82-1/8 in.

## Highlights

- Fiberglass construction resists denting, rusting and rotting for durability in the elements
- Polyurethane foam core provides energy-efficient insulation
- Composite adjustable threshold and compression weather-strip help to prevent air and water infiltration
- Sill-to-jamb kit and bottom door rail provide resistance to exterior jamb and door rot
- Matching sill and hinge finish add a stylish accent
- Double pane glass is insulated and tempered for energy efficiency and security
- High-definition panel embossments with a chestnut mahogany finish and a wood-grain texture for the warmth and feel of wood
- Ball-bearing hinges offer smooth operation and help to prevent door sagging and hinge wear
- Requires a 38-1/4 in. x 82-1/8 in. rough opening for a secure fit
- ENERGY STAR qualified to meet or exceed federal guidelines for energy efficiency for year-round energy and money savings
- Features 6 lite with bronze simulated divided lite and attached dentil shelf for authentic craftsman design and look
- From outside, open towards the inside of the home with the hinges on the right
- Limited lifetime warranty, 2-year finish warranty

## Specifications



**Door Type**  
**Exterior Prehung**

[See Similar Items](#)

**Door Handling**  
**Right-Hand/Inswing**

[See Similar Items](#)

**Glass Shape**  
**Rectangle Lite**

[See Similar Items](#)

**Door Configuration**  
**Single Door**

[See Similar Items](#)

**Glass Layout**  
**1/4 Lite**

[See Similar Items](#)

**Number of Lites**  
**6 Lite**

[See Similar Items](#)

**Glass Style**  
**Clear Glass**

[See Similar Items](#)

**Finish Type**  
**Stained**

[See Similar Items](#)

### Dimensions

Door Height (in.)	81.625 in
Door Thickness (in.)	1.75 in
Door Width (in.)	37.5 in
Jamb Size (in.)	4-9/16"
Nominal Door Height (in.)	80 in
Nominal Door Thickness (in.)	2 in
Nominal Door Width (in.)	36 in
Rough Opening Height (in.)	82.125 in
Rough Opening Width (in.)	38.25 in

### Details

Bore Type	Double Bore
Color Family	Chestnut
Color/Finish	Mahogany Woodgrain: Pre-Finished Chestnut
Door Configuration	Single Door
Door Glass Insulation	Dual Pane, Flush Glazed, Tempered
Door Handing	Right-Hand/Inswing
Door Style	Craftsman, Farmhouse, Modern
Door Type	Exterior Prehung
Features	Brickmold, Glass Panel, Lockset Bore (Double Bore), Weatherstripping
Finish Type	Stained
Frame Material	Wood
Glass Caming Finish	No caming
Glass Layout	1/4 Lite
Glass Shape	Rectangle Lite
Glass Style	Clear Glass
Hinge Finish	Patina
Hinge Type	Ball Bearing
Included	Instructions
Material	Fiberglass
Number of Hinges	3
Number of Lites	6 Lite
Panel Type	2 Panel
Product Weight (lb.)	92 lb

Security Door (Storm Door)

Order Details			×
Description:	Menards® SKU#	Quantity	
PARKVIEW FV CLEAR WH BN3664017032 Vendor Part #: 640-17_36X80_Parkview_Nkl_Wh_4152549 Size: Fits Door Opening: 35-7/8" to 36-3/8" W x 80" to 81" H Color: White LARSON® Parkview 36" x 80" White Nickel Handleset Fullview Storm Door	4152549	1	



The full glass design of this door allows maximum natural light into your home and enhances not only the look, but also adds warmth, security, and functionality. These doors include an interchangeable screen that allows you to switch between full glass or full screen for seasonal ventilation.

Features

- Low-maintenance durability; constructed with 1-1/4" thick extruded aluminum and surrounded by a heavy-duty weatherstrip
- Seasonal ventilation, maximum light; interchangeable fullview glass and screen open the home to the best of each season, including fresh air in the summer and natural light in the winter
- Adjustable-speed closer is color-matched to the door
- Includes decorative lever handleset with a built-in deadbolt
- The bottom expander helps seal the opening, even in entries with uneven sills
- Easy left- or right-hinge installation
- This item is not for sale to these Provinces, States, or Territories: HI, AK

Additional Resources

[Technical Specifications](#)  
[Installation Instructions](#)  
[Handle Installation Instructions](#)  
[Warranty](#)

Click here to see more products from **Larson**



NEED A CUSTOM SIZE STORM DOOR  
**BUILD YOUR STORM DOOR HERE**  
[CLICK HERE](#)

Color/Finish	White	Includes	1 Closer, Interchangeable Screen
Door Handing	Reversible	Screen Type	Interchangeable Glass & Screen
Fits Opening Height	80 to 81 inch	Glass Type	Tempered
Fits Opening Width	35-7/8 to 36-3/8 inch	Actual Width	35-3/4 inch
Manufacturer Warranty	Limited Lifetime	Actual Height	79-3/4 inch
Product Type	Fullview Storm Door	Actual Depth	1-1/4 inch
Handleset Finish	Nickel	Weight	52.5 pound
Shipping Dimensions	86.06 H x 38.81 W x 2.13 D	Shipping Weight	52.5 lbs
Return Policy	Regular Return ( <a href="#">view Return Policy</a> )		

## Product Details for Shutters

Two Sets of 15in by 35in

Spring Deals

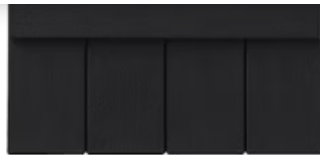
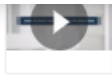
Ply Gem

**15 in. x 35 in. Polypropylene 4 Board Closed Board and Batten Shutter Pair in Black**



★★★★★ (785) Questions & Answers (163)



Hover Image to Zoom



Hover Image to Zoom

 Share  Print

## Product Details

### About This Product

From countryside to cottage to Craftsman, Board and Batten Shutters from Ply Gem add rustic charm to a variety of home styles. They come in 3-board open and 4-board closed styles, as well as a wide variety of standard heights and widths to fit virtually any window. Unique to Ply Gem, the Board and Batten Shutters feature an innovative hidden fastener, providing visual appeal with a special batten that slides to hide the screws.

### Highlights

- Available in 3-board open and 4-board closed styles
- Vibrant color with baked-on lacquer finish engineered to resist scratching and to last the life of your home
- Realistic woodgrain texture on every edge and surface adds beauty and charm
- Hidden fasteners for more visual appeal
- Reinforced construction resists warping
- Wont crack, split or fade guaranteed
- Paintable with high-quality latex paint
- Easy to install on any siding material
- Virtually maintenance-free
- Limited lifetime warranty

Product Information

Internet # 309519678  
Model # VIN4C1535 33  
UPC Code # 723605943335

Specifications

Dimensions: H 35 in, W 15 in, D 1.5 in



Shutter Width (in.)  
**15**

[See Similar Items](#)

Material  
**Polypropylene**

[See Similar Items](#)

Features  
**Hardware Included**  
**Paintable**  
**Water Resistant**

Shutter Usage  
**Decorative**

[See Similar Items](#)

Shutter Top Shape  
**Straight Top**

[See Similar Items](#)

Board & Batten Type  
**Standard Joined**

[See Similar Items](#)

Dimensions

Product Depth (in.)	1.5 in
Product Height (in.)	35 in
Product Thickness (in.)	.25 in
Product Width (in.)	15 in
Shutter Height (in.)	35
Shutter Size	Other
Shutter Width (in.)	15

Details

Board & Batten Type	Standard Joined
Board Spacing	Joined
Color Family	Black
Color/Finish	Black
Features	Hardware Included, Paintable, Water Resistant
Material	Polypropylene
Number of battens	2
Number of boards	4
Returnable	90-Day
Shape	Rectangular
Shutter Top Shape	Straight Top
Shutter Type	Board and Batten
Shutter Usage	Decorative

Warranty / Certifications

One Set of 15in by 63in

Spring Deals

Ply Gem

**15 in. x 63 in. Polypropylene 4-Board Closed Board and Batten Shutters Pair in Black**

★★★★★ (785) Questions & Answers (163)



Hover Image to Zoom



Product Details

About This Product

From countryside to cottage to Craftsman, Board and Batten Shutters from Ply Gem add rustic charm to a variety of home styles. They come in 3-board open and 4-board closed styles, as well as a wide variety of standard heights and widths to fit virtually any window. Unique to Ply Gem, the Board and Batten Shutters feature an innovative hidden fastener, providing visual appeal with a special batten that slides to hide the screws.

Highlights

- Vibrant color with baked-on lacquer finish engineered to resist scratching and to last the life of your home
- Realistic woodgrain texture on every edge and surface adds beauty and charm
- Reinforced construction resists warping
- Wont crack, split, or fade guaranteed
- Paintable with high-quality latex paint
- Easy to install on any siding material
- Virtually maintenance-free
- Limited lifetime warranty
- Lengths and widths are nominal +/- 1/2

Product Information

Internet # 309473939  
Model # VIN4C1563 33  
UPC Code # 723605966495

Specifications

Dimensions: H 63 in, W 15 in, D 1.5 in



Shutter Width (in.)

15

[See Similar Items](#)

Material

Polypropylene

[See Similar Items](#)

Features

Hardware Included  
Paintable  
Water Resistant

Shutter Usage

Decorative

[See Similar Items](#)

Shutter Top Shape

Straight Top

[See Similar Items](#)

Board & Batten Type

Standard Joined

[See Similar Items](#)

**Dimensions**

Product Depth (in.)	1.5 in
Product Height (in.)	63 in
Product Thickness (in.)	.25 in
Product Width (in.)	15 in
Shutter Height (in.)	63
Shutter Size	Other
Shutter Width (in.)	15

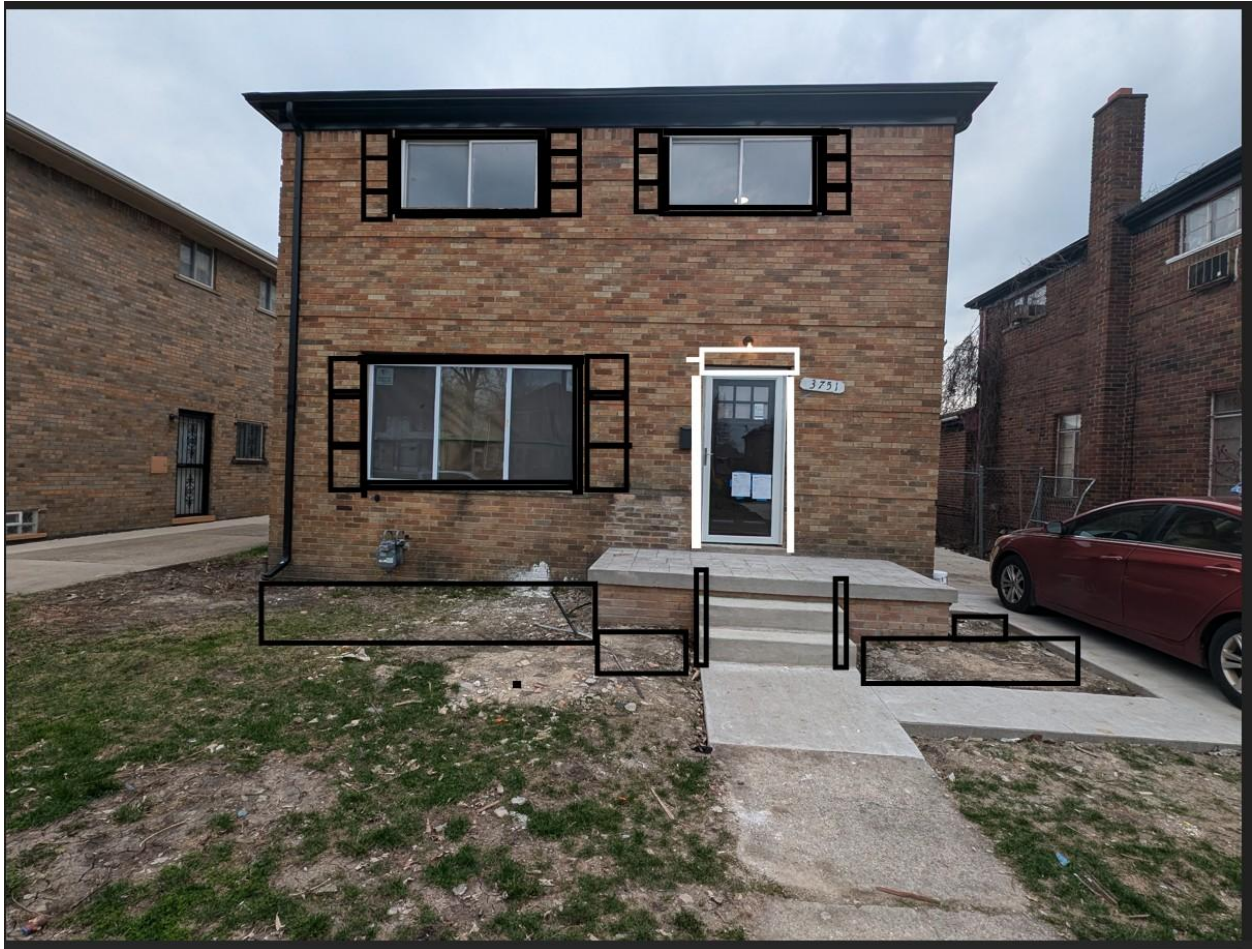
**Details**

Board & Batten Type	Standard Joined
Board Spacing	Joined
Color Family	Black
Color/Finish	Black
Features	Hardware Included, Paintable, Water Resistant
Material	Polypropylene
Number of battens	3
Number of boards	4
Returnable	90-Day
Shape	Rectangular
Shutter Top Shape	Straight Top
Shutter Type	Board and Batten
Shutter Usage	Decorative

**Warranty / Certifications**

Manufacturer Warranty	Limited Lifetime Warranty
-----------------------	---------------------------

Picture sent previously



## Landscape Site Plan

Dimensions- See attached picture



### Plants

About 13 to 15 Hostas

6 Bushes

Four Perennial Tall plants (about 4-6ft)

### Materials

5 yards of Soil around Concrete and Front Bed

2 Yards of Black Mulch to Front Bed

A Rubber Edging will be used for Front Boarder around plant

