



HISTORIC DISTRICT COMMISSION ADDITIONAL INFORMATION REQUEST

City of Detroit - Planning & Development Department
2 Woodward Avenue, Suite 808
Detroit, Michigan 48226

Date:

Application Number: HDC2025-00011

APPLICANT & PROPERTY INFORMATION

NAME: Kenneth Moody

COMPANY NAME: KM Consulting

ADDRESS: 17245 Woodbine

CITY: Detroit

STATE: MI

ZIP: 48219

PROJECT ADDRESS: 2010-2040 Michigan Ave

HISTORIC DISTRICT: Corktown

REQUESTED INFORMATION

We have received your application, but it is not yet complete for review. Please provide additional details based on the comments and questions listed below. Should you need to attach additional files per this request, use the paperclip icons at the end of this form. You may attach up to (5) files per icon up to 25MB:

Dear applicant, you have provided an elevation of the trash enclosure but we still need more information on the cashier booth. At a minimum we would need an elevation and would need to know the materials. Thank you.

PSR: 250214TB

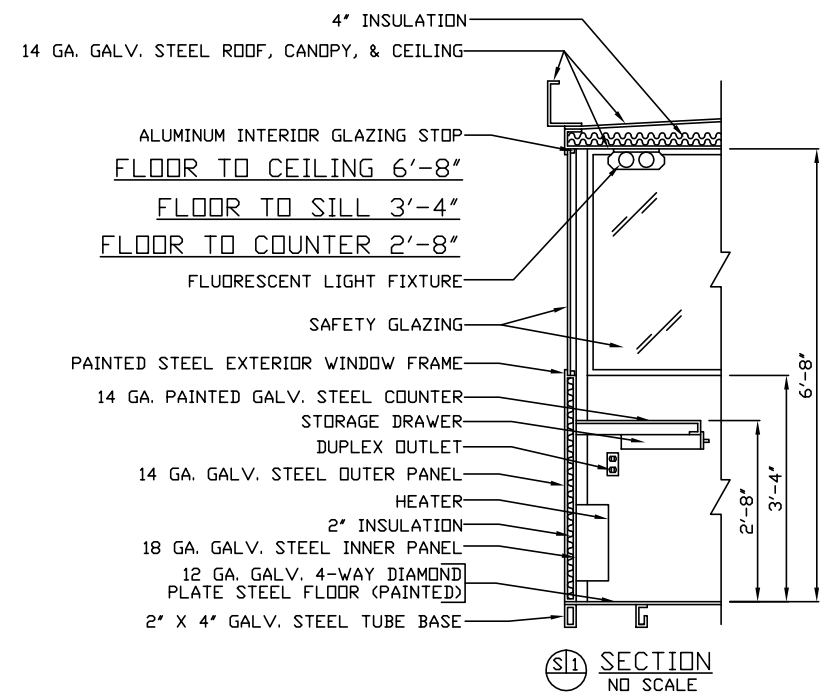
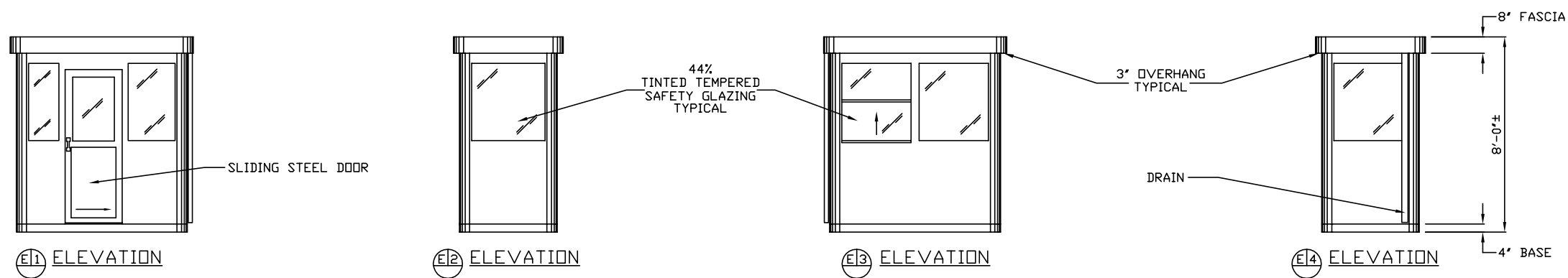
APPLICANT RESPONSE

Response Date: 02/14/2025

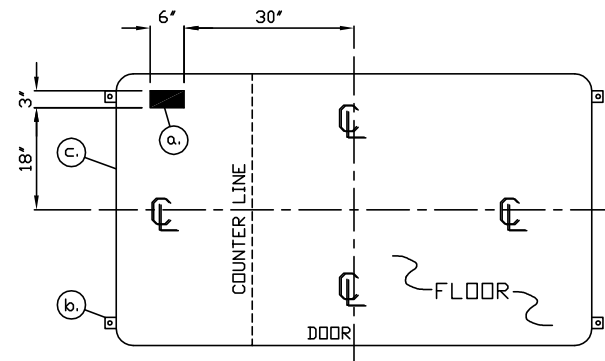


The booth will be a per-assembled style unit similar &/or equal to Par-Kut model attached. size will be 4' x 6'





- a. 3" X 6" SLOT IN FLOOR FOR ELECTRIC SERVICE ENTRANCE TO C.B. PANEL ABOVE
- b. 2" X 2" X 1/4" MIN. ANCHOR CLIP WITH 3/4" ANCHOR BOLT HOLE, 4-REQ'D. ONE EACH CORNER. ANCHOR BOOTH AFTER FINAL LOCATION. ANCHOR BOLTS NOT INCLUDED
- c. OUTER EDGE OF BASE

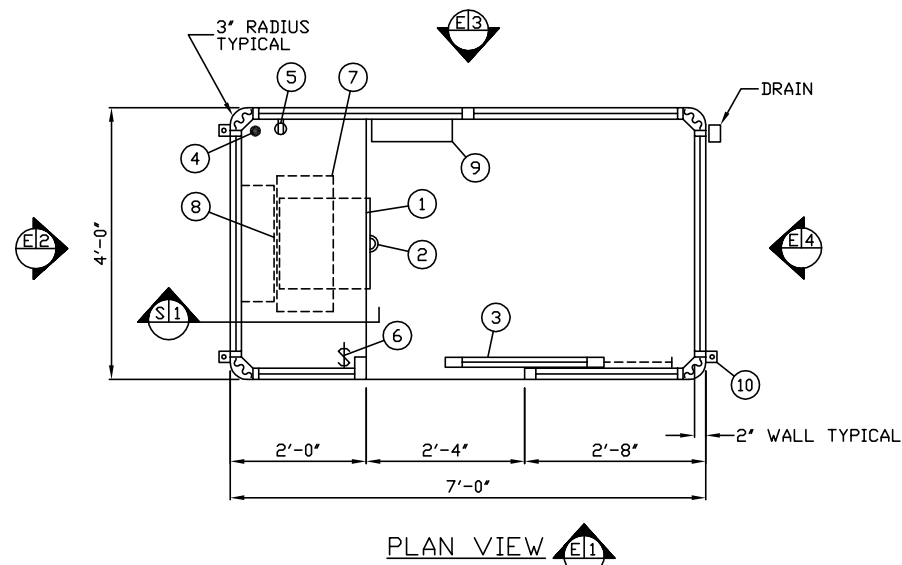


NOTE: PROVIDE 120/240V. 1Ø-3 WIRE SERVICE WITH GROUND.
SERVICE ENTRANCE/ANCHOR BOLT LAYOUT

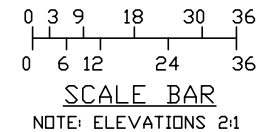
1. COUNTER- 22" DEEP PAINTED GALVANIZED STEEL 32" ABOVE FLOOR.
2. PAINTED STORAGE DRAWER BENEATH COUNTER.
3. DOOR- 28" WIDE, SLIDING STEEL WITH WEATHER-STRIPPING, BALL BEARING HANGERS, SAFETY GLAZING, HEAVY DUTY TRACK, HOOK BOLT LOCK, & HARDWARE. 2" HOLE IN COUNTER FOR DROP CORDS TO OUTLET.
4. DUPLEX OUTLET- MOUNTED BELOW COUNTER.
5. LIGHT SWITCH MOUNTED ABOVE COUNTER.
6. LIGHT- FLUORESCENT LIGHT FIXTURE WITH LENS.
7. HEATER- 240V./5,600 WATT FAN FORCED WITH INTEGRAL THERMOSTAT CONTROL.
8. C.B. PANEL- 12 SPACE 120/240V. 1Ø-3 WIRE WITH GROUND BAR. 100 AMP MAIN BREAKER IS INCLUDED.
9. ANCHOR CLIP- 2" X 2" X 1/4" MIN. STEEL WELDED TO BASE AT GRADE WITH 3/4" ANCHOR BOLT HOLE. 4-REQ'D. ANCHOR BOOTH AFTER FINAL LOCATION. ANCHOR BOLTS NOT INCLUDED.

NOTE: PAR-KUT BOOTHS ARE OF SINGLE UNIT WELDED GALVANIZED STEEL CONSTRUCTION, FACTORY ASSEMBLED AND DELIVERED SET UP. FAILURE TO SECURELY ANCHOR BOOTH MAY RESULT IN OVERTURNING OF UNIT AND SERIOUS INJURY TO OCCUPANT.

- A. GLAZING TO BE 44% TINTED TEMPERED SAFETY GLAZING WITH PAINTED STEEL EXTERIOR WINDOWS FRAMES AND ALUMINUM INTERIOR GLAZING STOPS.
- B. PAINT-A RUST INHIBITIVE PRIMER WITH AN INDUSTRIAL FINISH.
- C. ELECTRICAL- ALL WIRING BY PAR-KUT TO BE #12(MIN) STRANDED COPPER, THHN ENCLOSED IN 1/2"(MIN) E.M.T. PER NATIONAL ELECTRIC CODE. FITTINGS, FIXTURES & DEVICES ARE U.L. LABELED. ALL WIRING TO TERMINATE AT C.B. PANEL. ALL CIRCUITS HAVE GREEN GROUND WIRE.
- D. BOOTH WILL HAVE A 3" CANOPY OVERHANG ON ALL SIDES.
- E. LIFTING RING(S) ARE PROVIDED IN ROOF.
- F. NO ON SITE WORK BY PAR-KUT.
- G. VERTICAL SLIDING WINDOW INCLUDES INSECT SCREEN.



PLAN VIEW E1



NOTE: THIS PRINT AND DESIGN ARE THE PROPERTY OF PAR-KUT INTERNATIONAL, INC. IT MUST NOT BE REPRODUCED IN ANY MANNER, NOR SHALL IT BE SUBMITTED TO OUTSIDE PARTIES FOR EXAMINATION WITHOUT OUR CONSENT. IT SHALL BE USED ONLY AS A MEANS OF REFERENCE TO WORK DESIGNED AND FURNISHED BY PAR-KUT. PAR-KUT RESERVES THE RIGHT TO MAKE CHANGES TO DESIGN FOR ENGINEERING PURPOSES WITHOUT NOTICE. REVISIONS MAY NOT BE NOTED.

PAR-KUT INTERNATIONAL, INC.
10961 Production Drive
Harrison Twp, Mich.
48045-1351
PH. (810) 468-2947

DWG# 03-149-51 SHEET A-1

DELTA SONIC CAR
WASH SYSTEMS
ROCHESTER, NY

A/E NOTES		
PAINT COLOR: MATCH SHERWIN WILLIAM BRILLIANT WHITE		
TINTED GLAZING COLOR: GRAY		
PD# 01-65156	SCALE	NTS
DATE	5-2-2003	CHK'D BY:
DRAWN BY	DNE	REVISED
SIZE	4' X 7'	11-6-2014
QTY	3	
SALES REPRESENTATIVE		MAL NEWCOMB