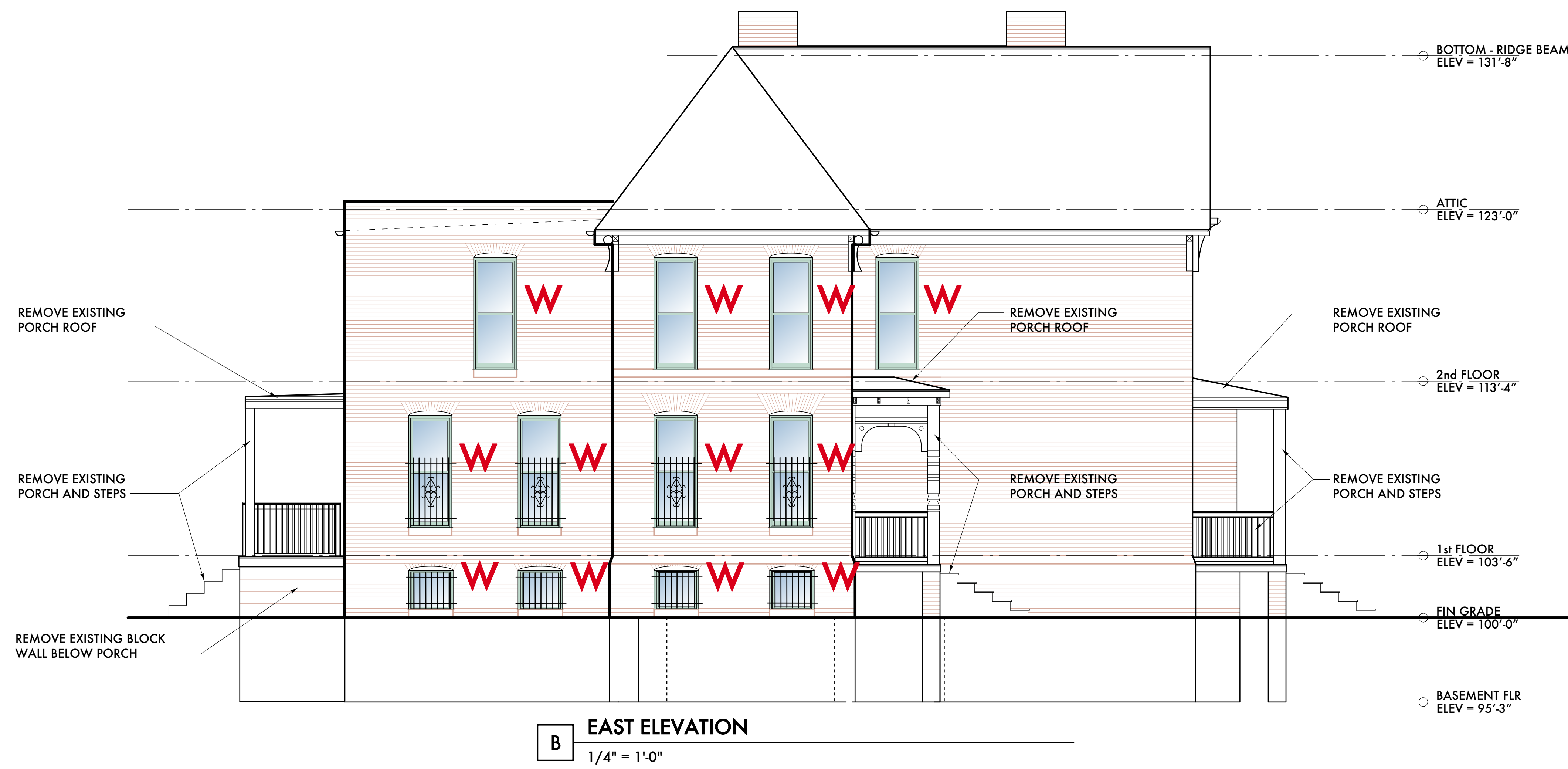
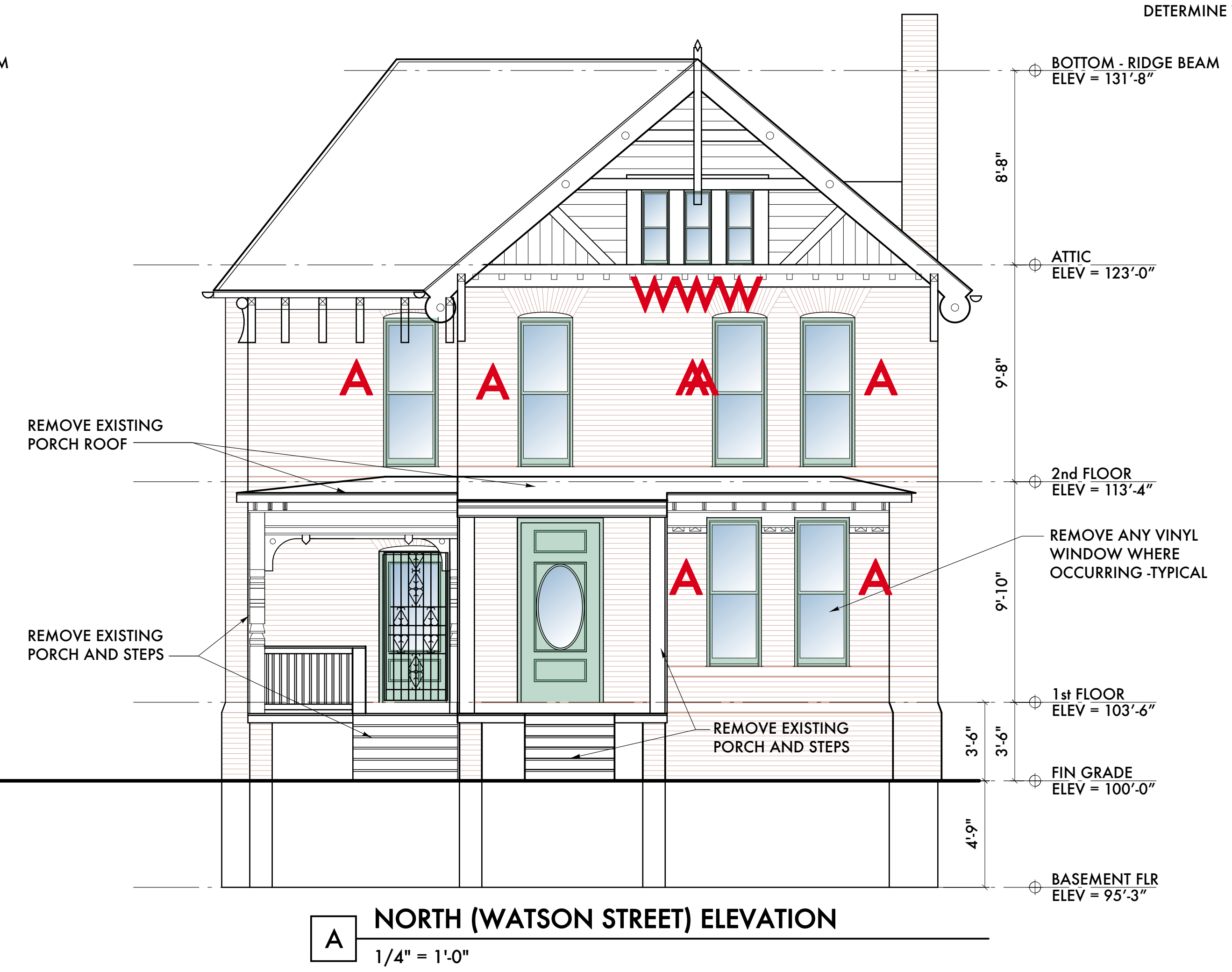


GENERAL NOTES:

1. ALL BRICK MASONRY SURFACES ARE TO BE CLEANED W/ SOAP AND WATER, LOW PRESSURE ONLY. APPLY PAINT REMOVING PRODUCT ON EXISTING PAINTED, BRICK MASONRY SURFACES TO INCREASE AMOUNT OF PAINT REMOVAL.
2. APPLY PAINT REMOVER TO ALL STONE "BAND COURSES" ON THE BUILDING. POWER WASH PAINT REMOVER MATERIAL OFF AND THEN POWERWASH CLEAN.
3. THE AREAS OF DEMOLITION ARE INTENDED TO SHOW THE GENERAL AREA AND SCOPE OF THE WORK. SEE THE PROPOSED FLOOR PLANS FOR THE FINAL CONDITION TO DETERMINE THE DEMOLITION ITEMS NEEDED.

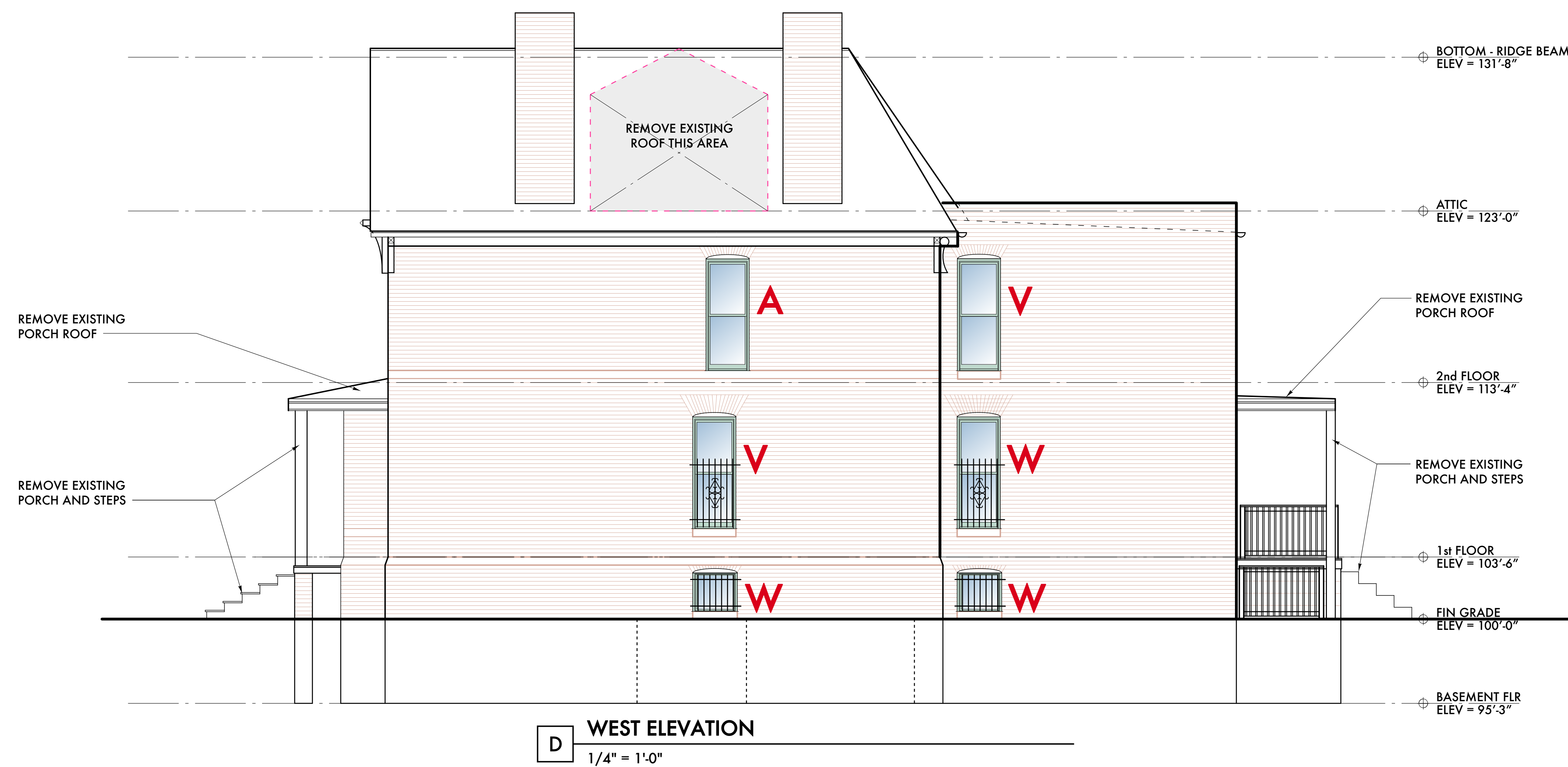


B EAST ELEVATION
1/4" = 1'-0"

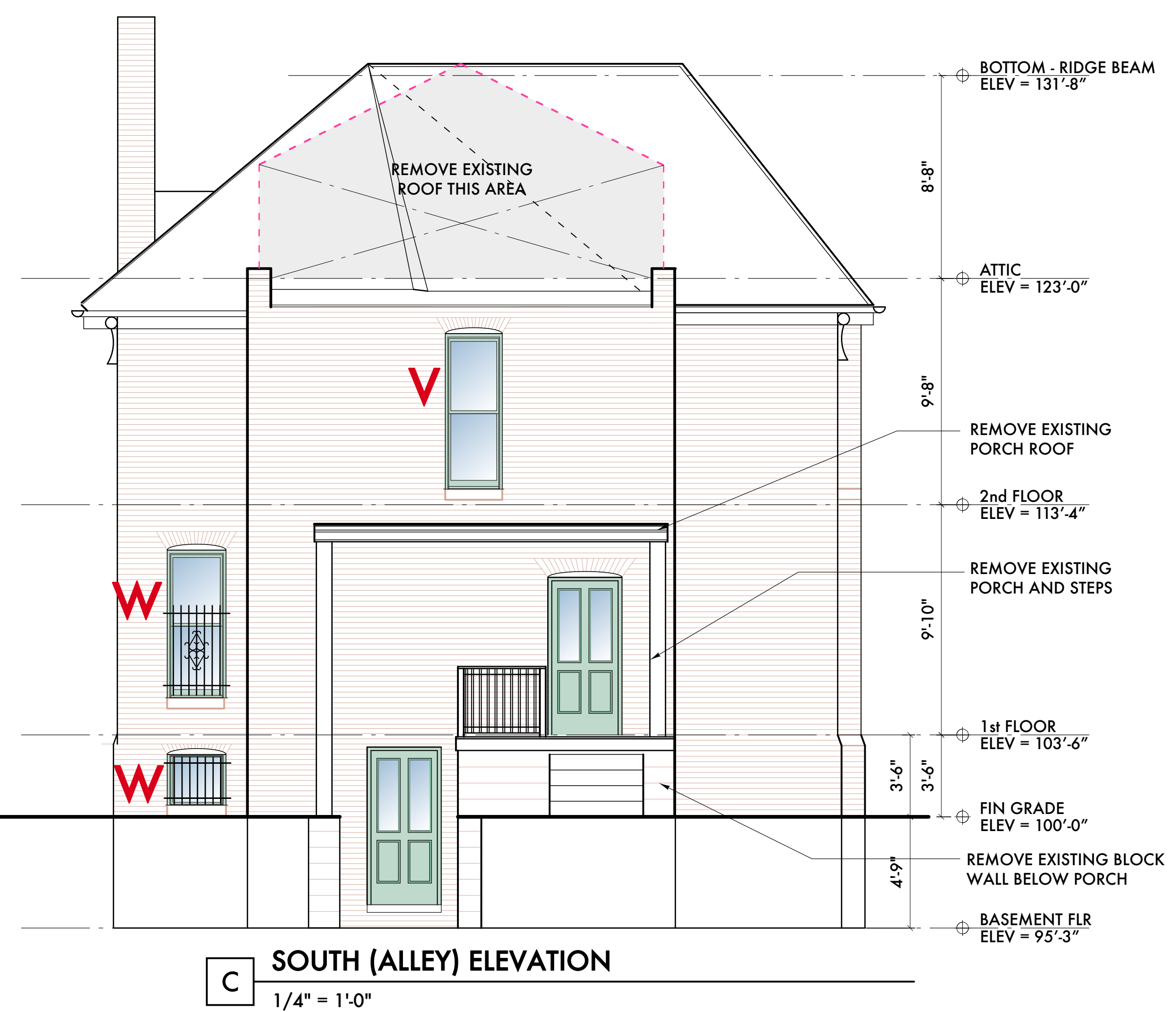


A NORTH (WATSON STREET) ELEVATION
1/4" = 1'-0"

SYMBOL LEGEND
A = ALUMINUM
V = VINYL
W = WOOD



D WEST ELEVATION
1/4" = 1'-0"



C SOUTH (ALLEY) ELEVATION
1/4" = 1'-0"



11/08/24 Historic Commission
Date: Issued For:

Watson Residence
Historic Home
264 East Watson
Detroit, Michigan 48201

studioONE : DETROIT
architectural
urban | DESIGN
interior

350 Madison Avenue
4th Floor
Detroit, Michigan 48226
studioonedetroit.com
313.549.3790 (toll free)
info@watsonresidence.com

Project Number: 2024 - 07

Sheet Title:
EXTERIOR BUILDING ELEVATIONS

Sheet Number:
A5.00 (E)

© 2024 studioONE, llc