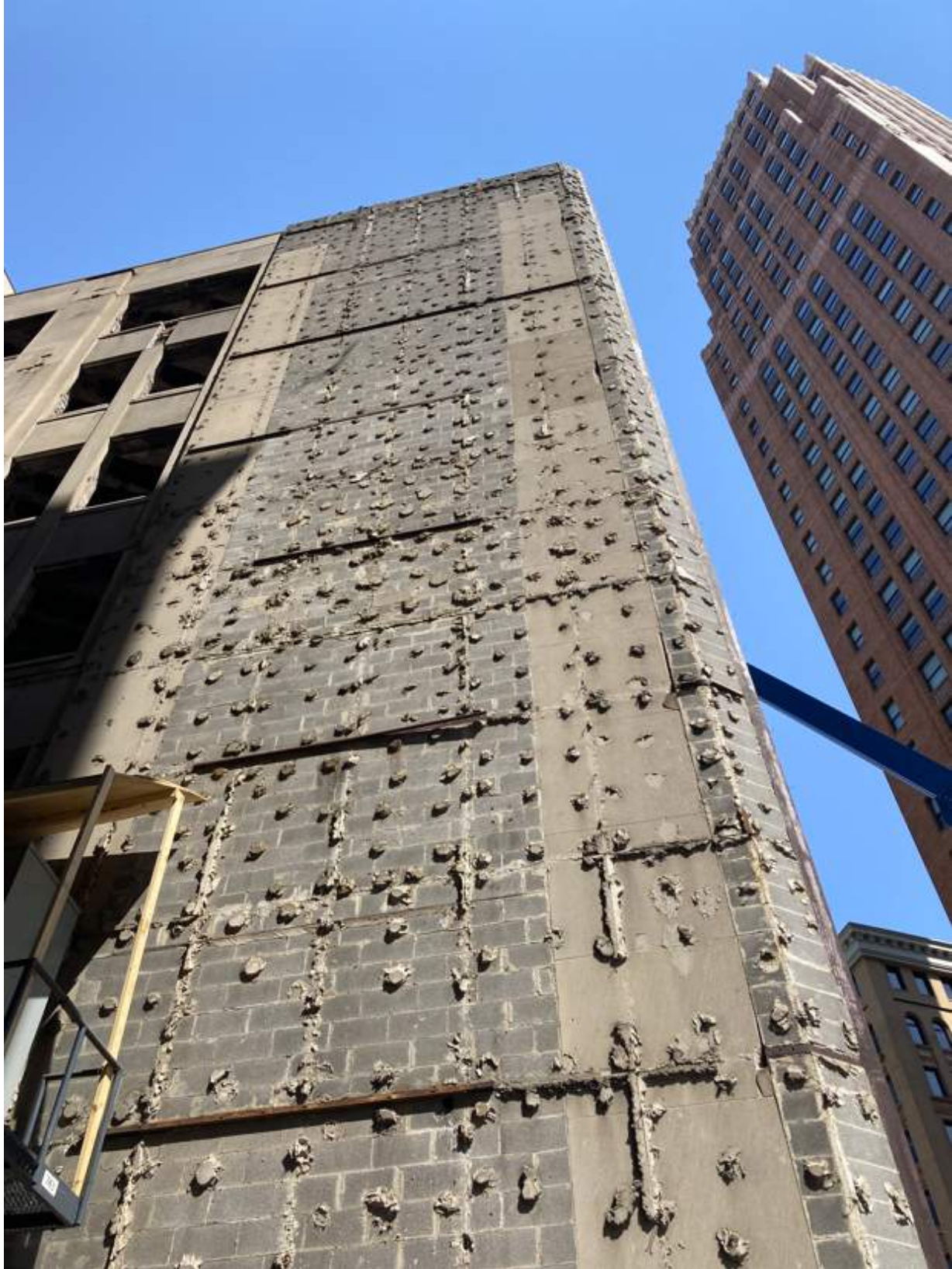


Alley facade prior to removal of CMU block

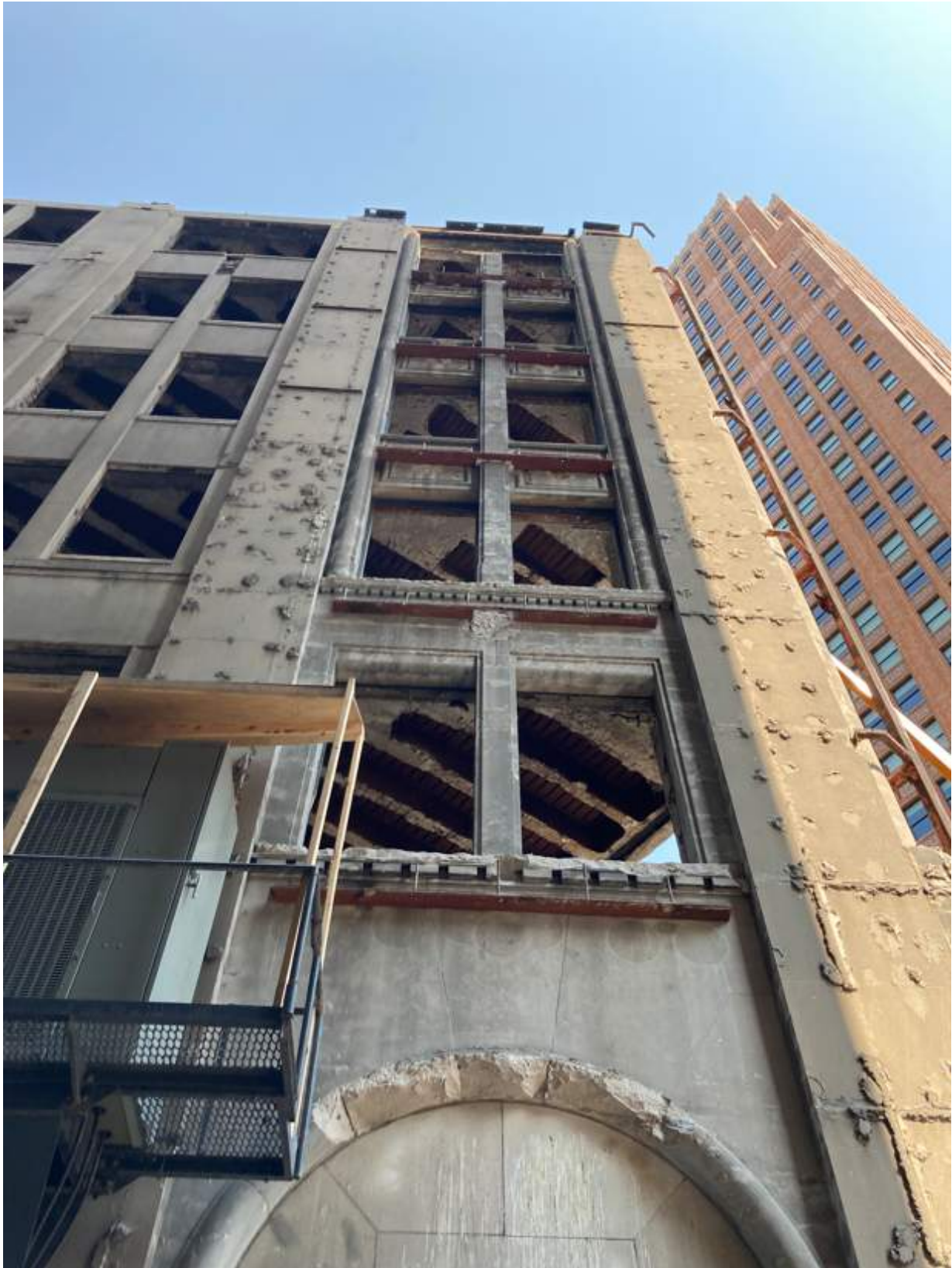


Alley facade prior to removal of CMU block





Alley facade prior to removal of CMU block

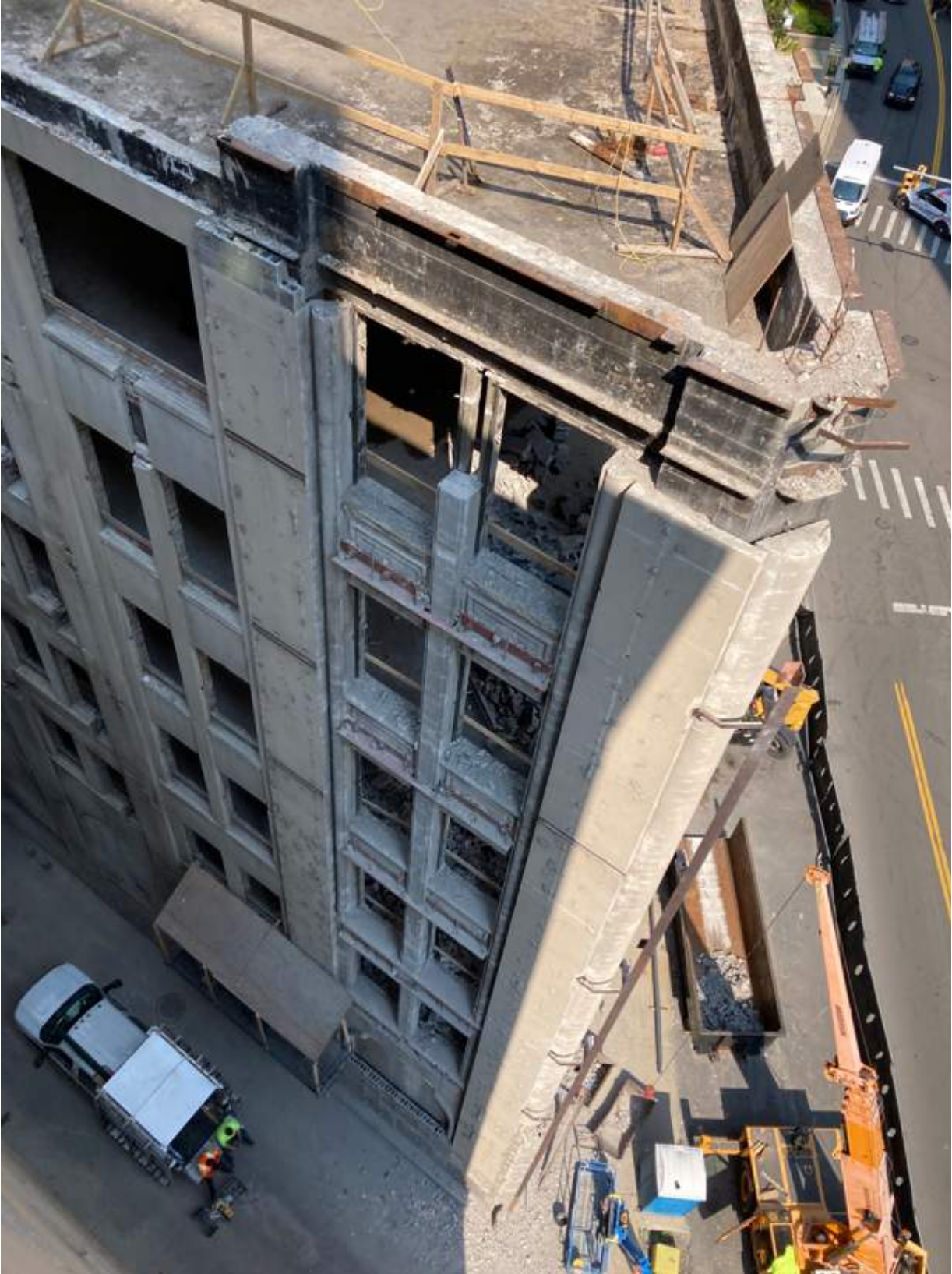


Alley facade after removal of CMU block, before removal of steel angles





Alley facade after removal of CMU block, before removal of steel angles



Alley facade after removal of CMU block





Alley facade after removal of steel angles from spandrels - 7th floor



Alley facade after removal of steel angles from spandrels - 5th floor



Alley facade after removal of steel angles from spandrels - 6th floor



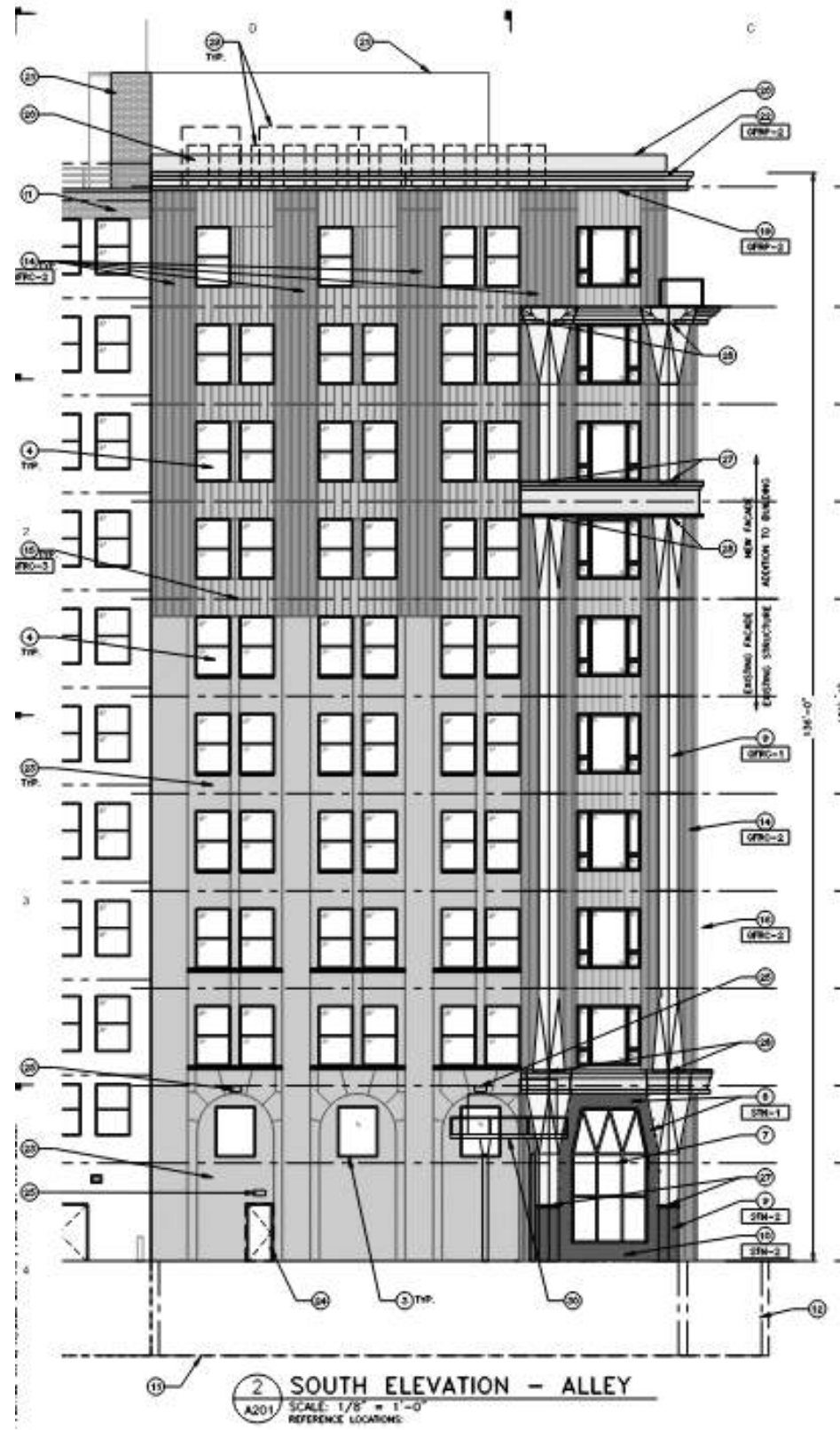
Alley facade after removal of steel angles from spandrels - 4th floor



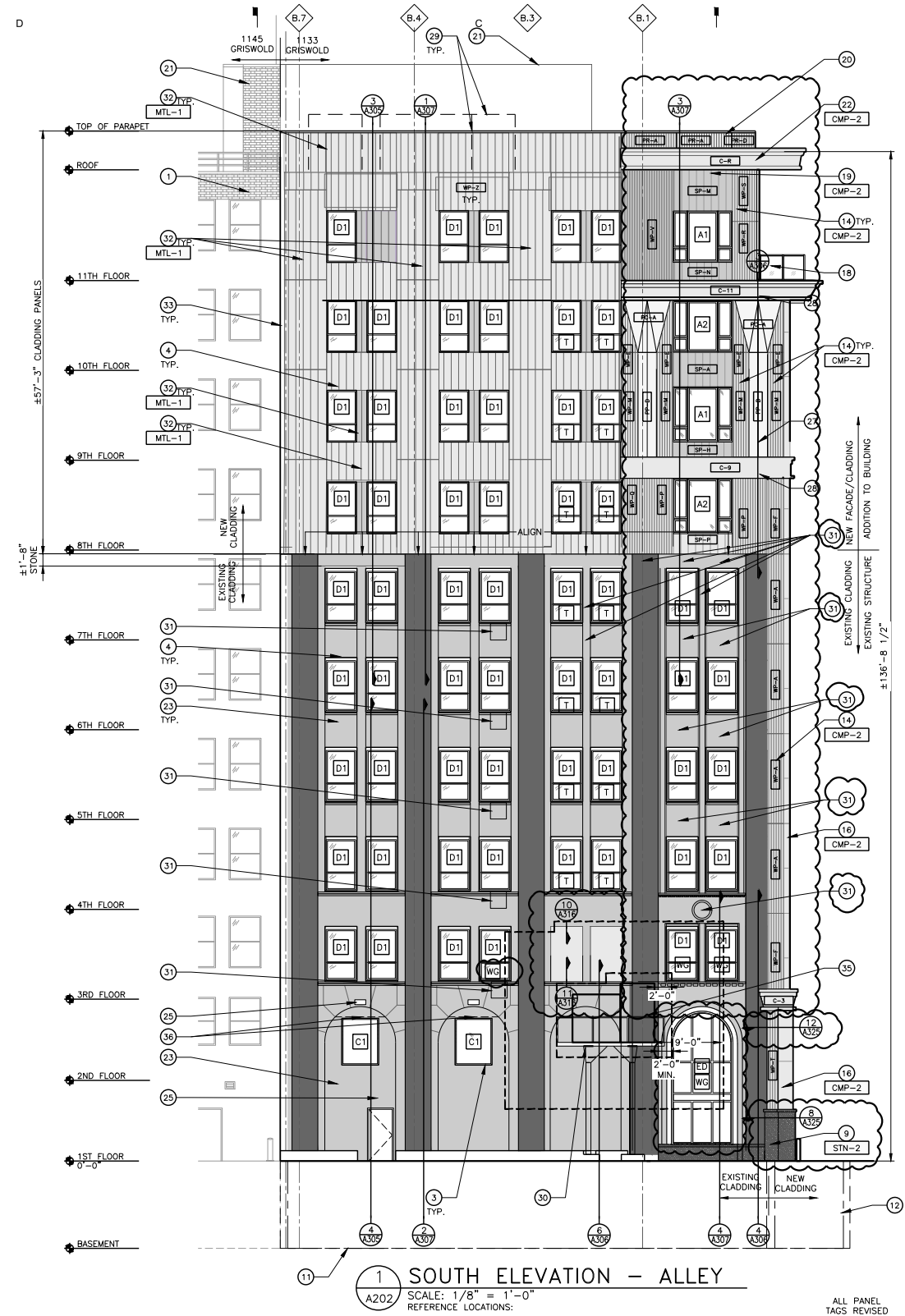


Alley facade at 3rd floor sill and dentils and 2nd floor arch





Original alley facade design



Revised alley facade design

