

Oasis 60mm



CHAMPAGNE



ONYX



CLOUDBURST



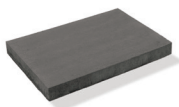
MARBLE GREY



MILANO

Step Treads: Oasis, Onyx
Slabs: Nueva® Slab, Champagne
Water feature: Modan, Champagne with Oasis, Onyx caps

Nueva® Collection



Coping Stone
24 x 14.125"
(610 x 360mm)
Individually Packaged

Packaging Specifications

| OASIS | Per Full Bundle | | | | Per Layer | | | | Per Section | | | | Per Pc. | | |
|---------------------|-----------------|----------|--------|-----------|-----------|---------|----------|--------|-------------|----------|---------|----------|---------|-----------|---------------|
| | Sq. Ft. | Lin. Ft. | Pieces | Wt. (lbs) | Layers | Sq. Ft. | Lin. Ft. | Pieces | Wt. (lbs) | Sections | Sq. Ft. | Lin. Ft. | Pieces | Wt. (lbs) | Wt./pc. (lbs) |
| Coping Stone | 85 | 72 | 36 | 2448 | 9 † | 9.5 | 8 | 4 | 272 | 2 | 42.5 | 36 | 18 | 272 | 68 |

† = Packaged with mesh between layers

Weights/Piece are approximate.

FEATURES & RECOMMENDED USES

Product Matrix

RECOMMENDED USES

| PRODUCT | THICKNESS | SIZE | POOL COPING | WALL COPING/CAP | SEAT WALL | FIRE PIT COPING | STEP TREAD |
|--------------|-----------|--------------|-------------|-----------------|-----------|-----------------|------------|
| Oasis | 60mm | Coping Stone | √ | √ | √ | √ | √ |

All Oaks Landscape products fully meet or exceed the latest version of CSA A231, ASTM C936, ASTM C1372 or ASTM C1782 as applicable to the specific product and area of sale.



OAKSPAVERS.COM

CA 1.800.709.OAKS (6257) | US 1.800.876.OAKS (6257)

Product representations shown in this publication are intended to convey the general colour, texture and appearance of the product. Variations may occur in the manufacturing and printing process. Always select from current, physical product samples.