

**1 Lighting - East**  
SCALE: 1/4" = 1'-0"



**2 Lighting - North**  
SCALE: 1/4" = 1'-0"

**GENERAL ELEVATION/SECTION NOTES:**

1. THIS DRAWING IS DIAGRAMMATIC AND SHOULD BE USED TO DETERMINE THE DESIGN INTENT. THE CONTRACTOR IS RESPONSIBLE FOR THE COMPLETE SET OF WORK AS INDICATED AND SHALL FIELD VERIFY ALL WORK, COORDINATE ALL DRAWINGS / NEW WORK AND SHALL NOTIFY ARCHITECT IMMEDIATELY OF ANY DISCREPANCIES IN THE DOCUMENTS BEFORE PROCEEDING. FAILURE TO DO SO WILL RESULT IN THE CONTRACTOR TAKING FULL RESPONSIBILITY AND LIABILITY FOR SAID DISCREPANCIES.
2. ALL DIMENSIONS ARE SHOWN FROM FINISH FACE TO FINISH FACE OF PARTITION UNLESS OTHERWISE NOTED.
3. ALL WORK SHALL BE DONE IN ACCORDANCE WITH ALL LOCAL, STATE, COUNTY CODE REGULATIONS, O.S.H.A., AND THE AMERICAN WITH DISABILITIES ACT (ADA). REFER TO THE CODE PLAN FOR MORE INFORMATION.
4. REFER TO SIDING MANUFACTURER INSTALLATION INSTRUCTIONS AND STANDARD DETAILS
5. CONTRACTOR TO VERIFY/COORDINATE CODE REQUIRED WINDOW EGRESS REQUIREMENTS

**EXTERIOR LIGHTING KEY NOTES:**

- 1 VISUAL COMFORT & CO. GALENA EXTRA SMALL LANTERN, COLOR BLACK; MODEL OL14401SBL
- 2 VISUAL COMFORT & CO. GALENA LARGE LANTERN, COLOR BLACK; MODEL OL14404SBL
- 3 VISUAL COMFORT & CO. MARKET SQUARE MEDIUM LANTERN, COLOR OIL RUBBED BRONZE; MODEL OL2601ORB
- 4 HINKLEY SHAW LARGE WALL MOUNT LANTERN, COLOR BLACK; MODEL 12984BK

THESE SHEETS TO CONVEY EXTERIOR LIGHTING SELECTIONS AND LOCATIONS ONLY

CONSULTANT:

Project :  
1815 SEMINOLE EXTERIOR RENOVATION  
1815 SEMINOLE ST.,  
DETROIT, MI 48214

Issued for :  
HDC 09/11/2024

**NOT FOR CONSTRUCTION**

Drawn by :  
Author  
Checked by :  
Author

Sheet Title :  
EXTERIOR LIGHTING SELECTIONS

Project No. :  
2024020

Sheet No. :

**A6.1**

**GENERAL ELEVATION/SECTION NOTES:**

1. THIS DRAWING IS DIAGRAMMATIC AND SHOULD BE USED TO DETERMINE THE DESIGN INTENT. THE CONTRACTOR IS RESPONSIBLE FOR THE COMPLETE SET OF WORK AS INDICATED AND SHALL FIELD VERIFY ALL WORK, COORDINATE ALL DRAWINGS / NEW WORK AND SHALL NOTIFY ARCHITECT IMMEDIATELY OF ANY DISCREPANCIES IN THE DOCUMENTS BEFORE PROCEEDING. FAILURE TO DO SO WILL RESULT IN THE CONTRACTOR TAKING FULL RESPONSIBILITY AND LIABILITY FOR SAID DISCREPANCIES.
2. ALL DIMENSIONS ARE SHOWN FROM FINISH FACE TO FINISH FACE OF PARTITION UNLESS OTHERWISE NOTED.
3. ALL WORK SHALL BE DONE IN ACCORDANCE WITH ALL LOCAL, STATE, COUNTY CODE REGULATIONS, O.S.H.A., AND THE AMERICAN WITH DISABILITIES ACT (ADA). REFER TO THE CODE PLAN FOR MORE INFORMATION.
4. REFER TO SIDING MANUFACTURER INSTALLATION INSTRUCTIONS AND STANDARD DETAILS
5. CONTRACTOR TO VERIFY/COORDINATE CODE REQUIRED WINDOW EGRESS REQUIREMENTS

**EXTERIOR LIGHTING KEY NOTES:**

- 1 VISUAL COMFORT & CO. GALENA EXTRA SMALL LANTERN, COLOR BLACK; MODEL OL14401SBL
- 2 VISUAL COMFORT & CO. GALENA LARGE LANTERN, COLOR BLACK; MODEL OL14404SBL
- 3 VISUAL COMFORT & CO. MARKET SQUARE MEDIUM LANTERN, COLOR OIL RUBBED BRONZE; MODEL OL2601ORB
- 4 HINKLEY SHAW LARGE WALL MOUNT LANTERN, COLOR BLACK; MODEL 12984BK

THESE SHEETS TO CONVEY EXTERIOR LIGHTING SELECTIONS AND LOCATIONS ONLY

CONSULTANT:

Project :  
 1815 SEMINOLE EXTERIOR RENOVATION  
 1815 SEMINOLE ST.,  
 DETROIT, MI 48214

Issued for :  
 HDC 09/11/2024

NOT FOR CONSTRUCTION

Drawn by :  
 Author  
 Checked by :  
 Author

Sheet Title :  
 EXTERIOR LIGHTING SELECTIONS

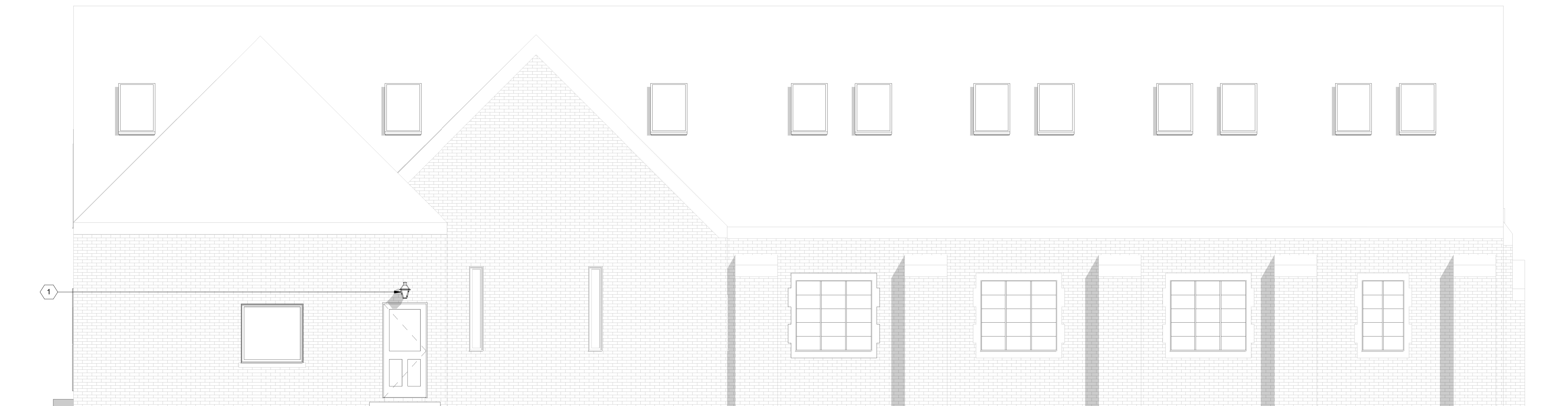
Project No. :  
 2024020

Sheet No. :  
**A6.2**

DO NOT SCALE DRAWINGS © 2021 Timothy Fimoff Architect, PLLC



**1** Lighting - West  
 SCALE: 1/4" = 1'-0"



**2** Lighting - South  
 SCALE: 1/4" = 1'-0"

SENDER: STERIP - LOCATION