

NOTE: Based on the scope of work, additional documentation may be required. See www.detroitmi.gov/hdc for scope-specific requirements.

PROJECT DETAILS – TELL US ABOUT YOUR PROJECT

Instructions: Add project details using the text box in each section. If your details exceed the space provided, attach the details via the attachment icon for that section.

ePLANS PERMIT NUMBER:

(only applicable if you've already applied for permits through ePLANS)

n/a

GENERAL

1. DESCRIPTION OF EXISTING CONDITION

Please tell us about the current appearance and conditions of the areas you want to change. You may use a few sentences or attach a separate prepared document on the right. (For example, "existing roof on my garage is covered in gray asphalt shingles in poor condition.")

most windows don't open and have been spray foamed shut, crank handles missing, glass panes broken/cracked in most windows, and some windows have had plexiglass installed (See pics).

2. PHOTOGRAPHS

Help us understand your project. Please attach photographs of all areas where work is proposed.



3. DESCRIPTION OF PROJECT

In this box, tell us about what you want to do at the areas described above in box #1. (For example, "Install new asphalt shingle roofing at garage.")

Replacing 13 existing windows

4. DETAILED SCOPE OF WORK

In this box, please describe all steps necessary to complete the work described in box #3. (For example, "remove existing shingles, replace wood deck as necessary, replace wood eaves, install roof vents, replace rotted fascia boards, paint, clean worksite.")


Windows will be replaced with Single, Double, or Fixed casement windows. Grilles will match existing. Homeowner would like GBG style grilles with the window replacement project. The windows will be removed, our window will go inside the brick opening, aluminum will be bent to seal the window up to the brick. Yellow insulation, spray foam, and caulk will be installed to seal the window properly. Any rotted lumber will be replaced if in the area of the window.

5. BROCHURES/CUT SHEETS

Please provide information on the products or materials you are proposing to install. For example, a brochure on the brand and color of the shingles proposed.



ADDITIONAL DETAILS

| | |
|--|---|
| <p>6. WINDOWS/DOORS <i>Detailed photographs of window(s) and/or door(s) proposed for replacement showing the condition of the interior and exterior of the window(s) and/or door(s)</i></p> |  |
| | |
| | |
| | |



4031 Fullerton St

Detroit

Russell Woods-Sullivan

Renewal by Andersen

37720 Amrhein

Livonia, MI 48150

- Homeowner wants to replace 13 existing windows with Renewal by Andersen windows
- Majority of windows will be single and double casement windows
- Home was built in 1940 (per Zillow/Redfin)
- Exterior color will be Andersen Red Rock
- Windows will be installed inside the brick pocket with aluminum bent to seal the window to the brick. Spray foam, caulk, and yellow insulation will be used to insulate around the window.
- Renewal by Andersen windows use Fibrex (wood composite) material which has previously been approved in other replacement projects throughout the City of Detroit in historic designated properties.





4031 Fullerton St
Front of house



4031 Fullerton St
Left side of house



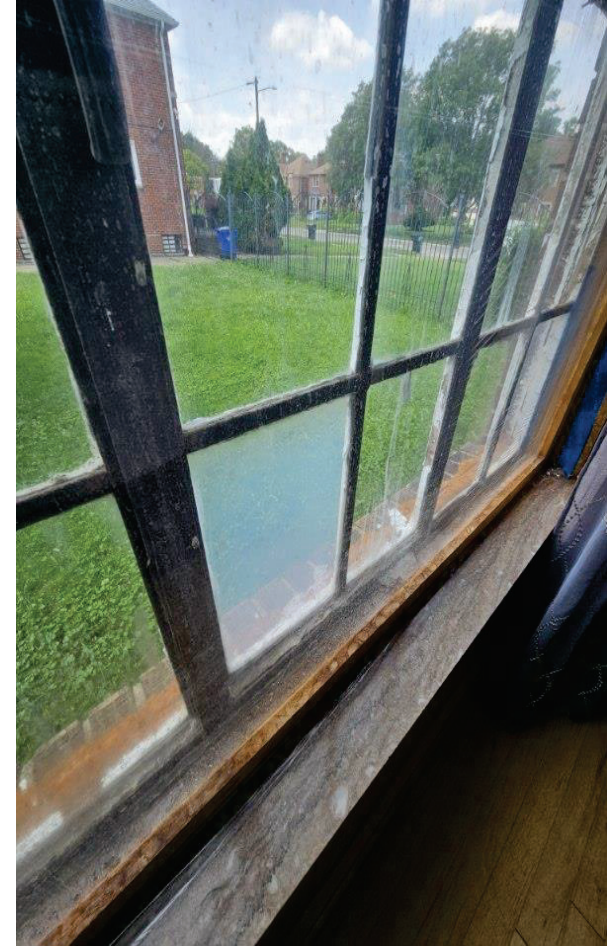
4031 Fullerton St
Back of house



4031 Fullerton St
Right side of house

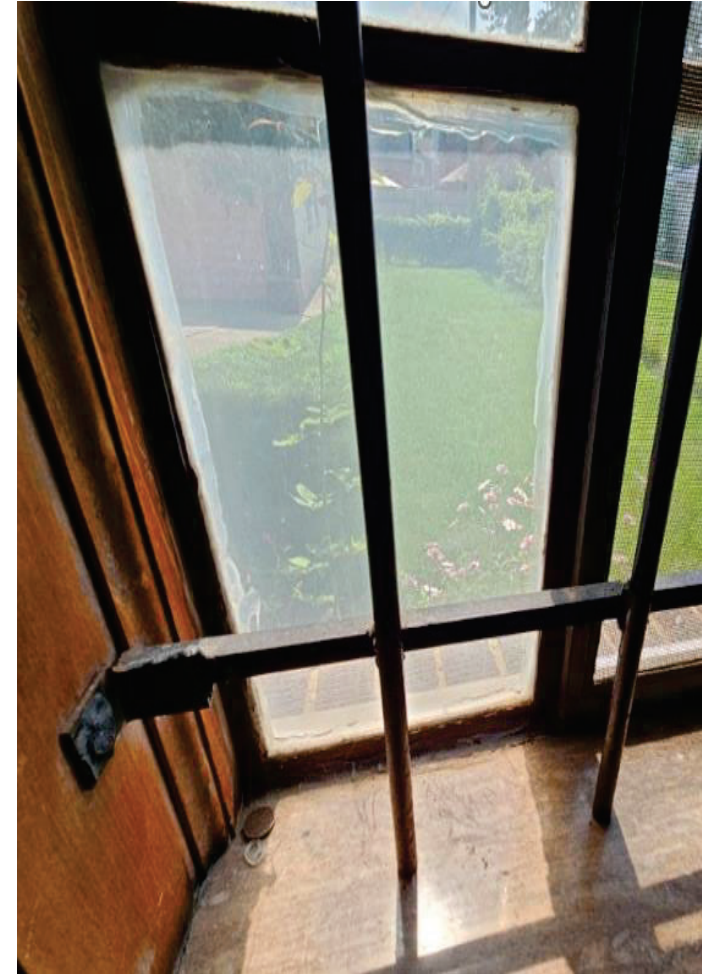


Issues with windows include:
Several broken glass panes, panels replaced with plexiglass, windows spray foamed shut, cranks missing and broken.



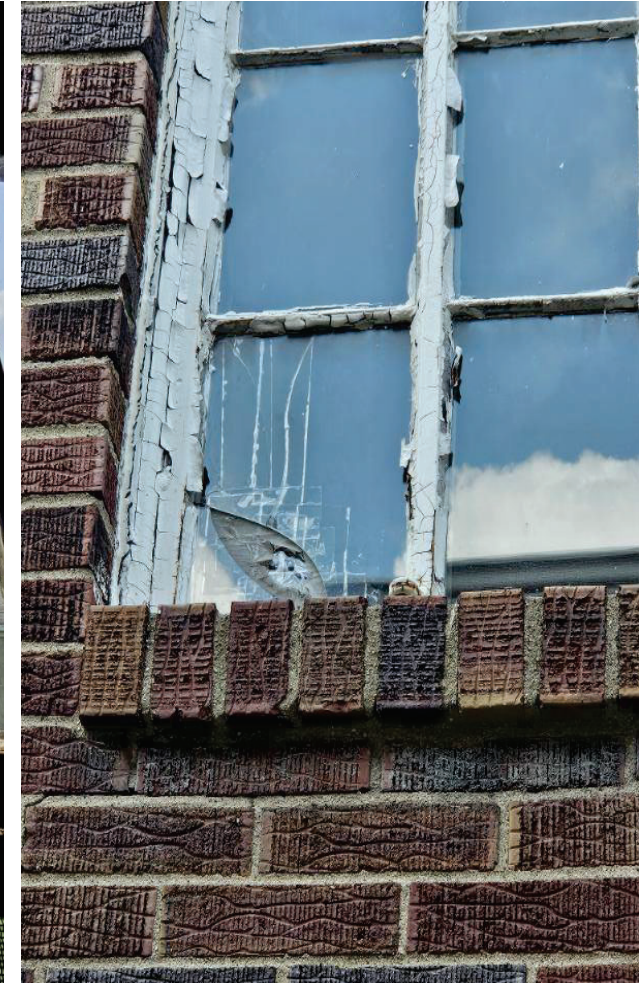
Issues with windows include:

Several broken glass panes, panels replaced with plexiglass, windows spray foamed shut, cranks missing and broken.



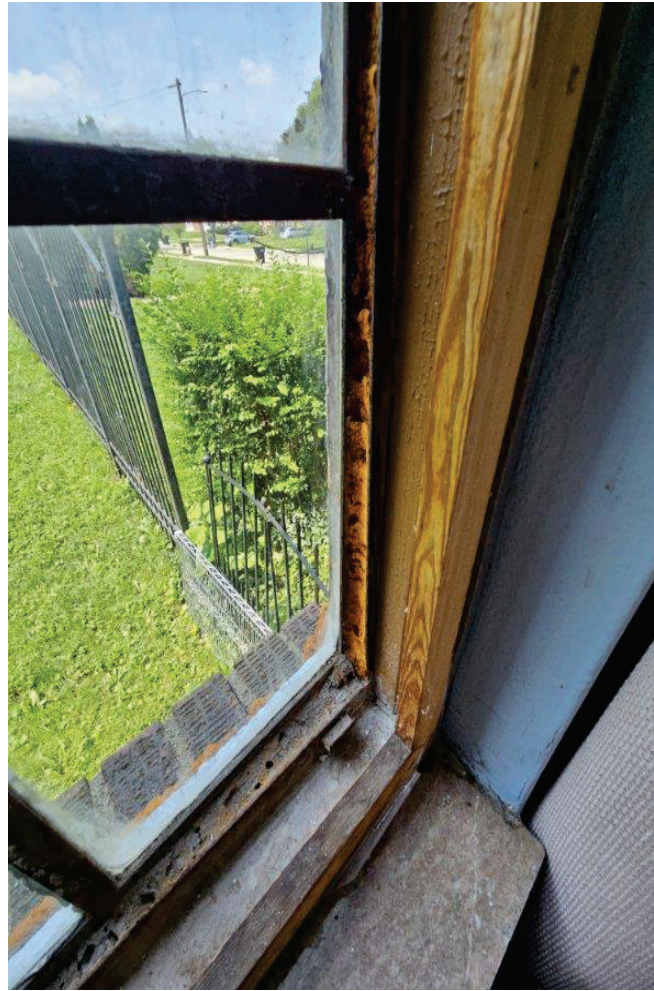
Issues with windows include:

Several broken glass panes, panels replaced with plexiglass, windows spray foamed shut, cranks missing and broken.



Issues with windows include:

Several broken glass panes, panels replaced with plexiglass, windows spray foamed shut, cranks missing and broken.

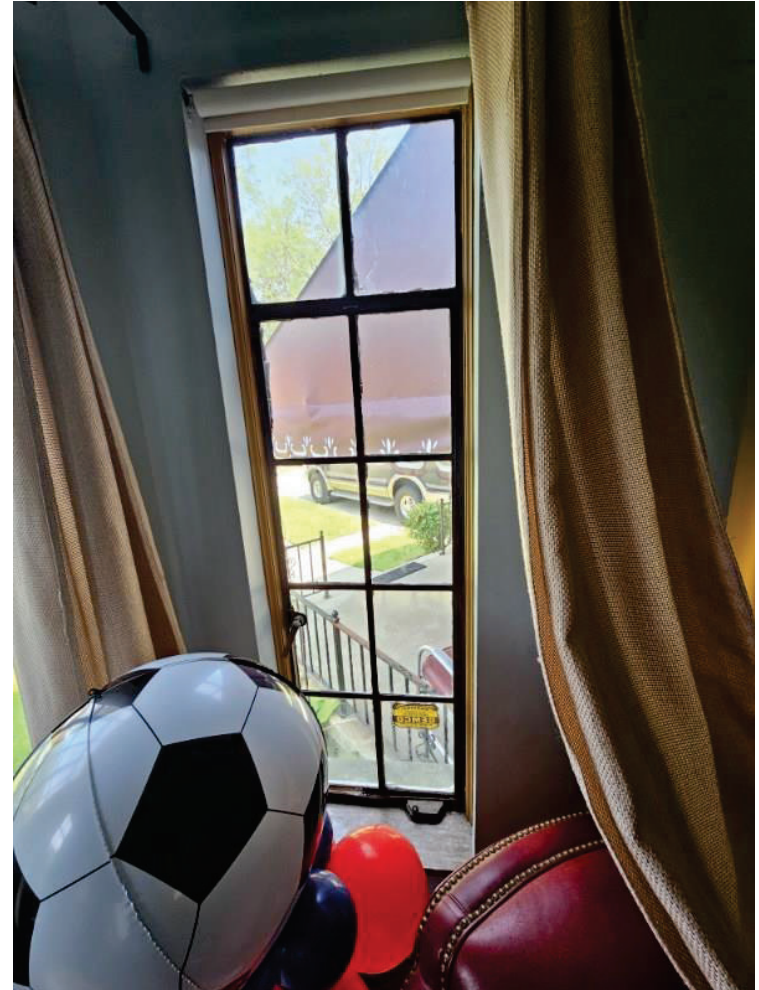


Issues with windows include:
Several broken glass panes, panels replaced with plexiglass, windows spray foamed shut, cranks missing and broken.



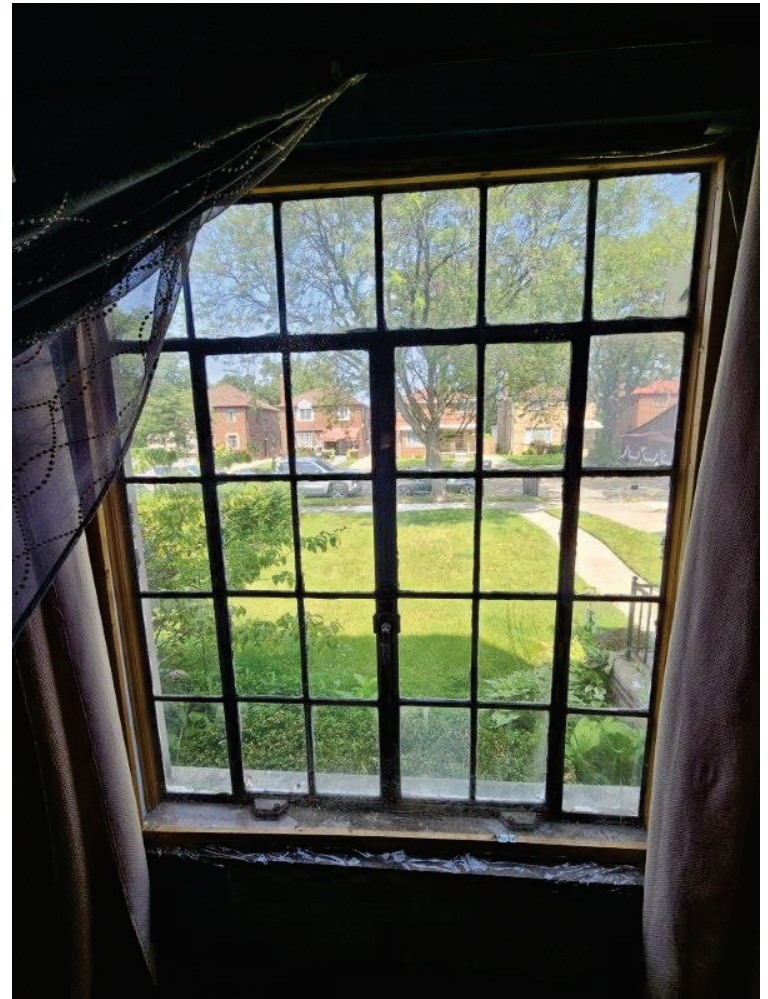
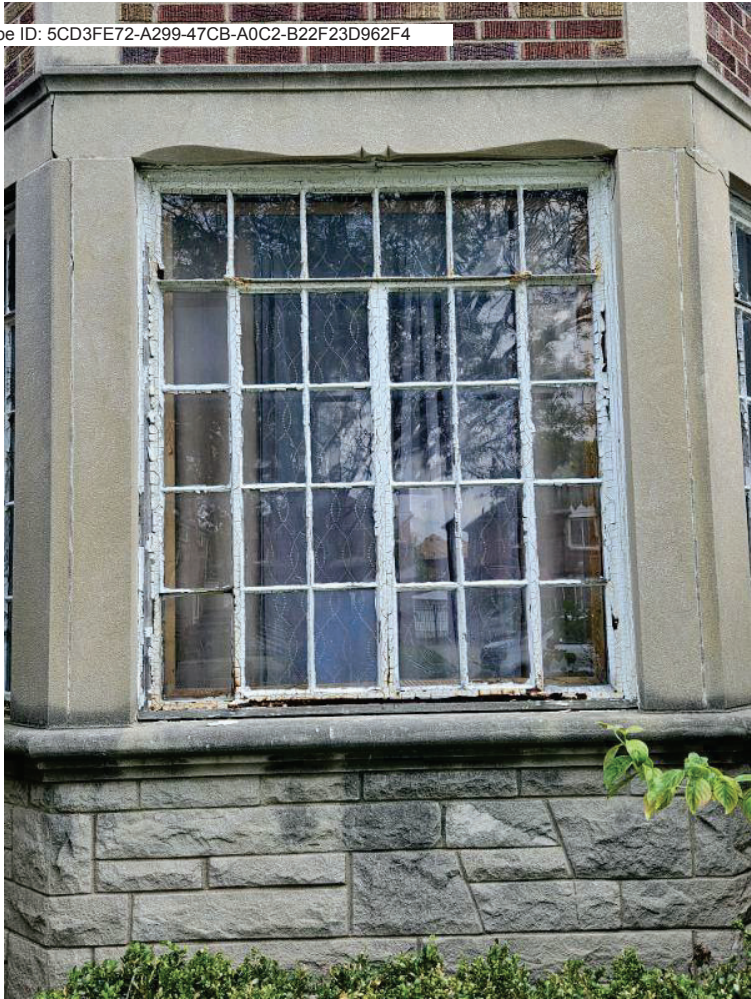
Issues with windows include:

Several broken glass panes, panels replaced with plexiglass, windows spray foamed shut, cranks missing and broken.



4031 Fullerton St

Unit 101 – Replace with single casement window (Grille will be 2w x 5h to match)



4031 Fullerton St

Unit 102 – Replace with Fixed Casement Window (Grilled will be 6w x 5h to match)

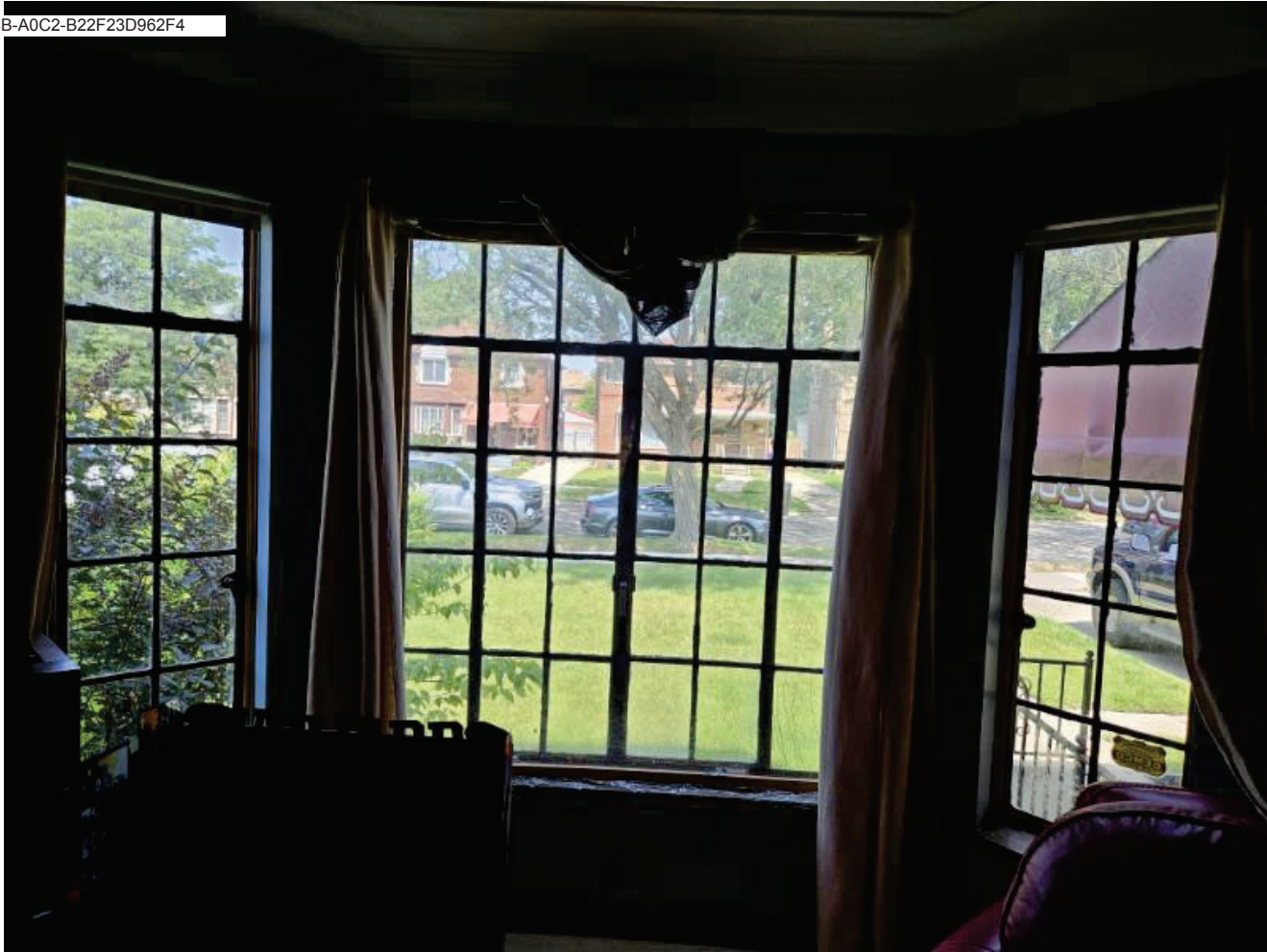


4031 Fullerton St

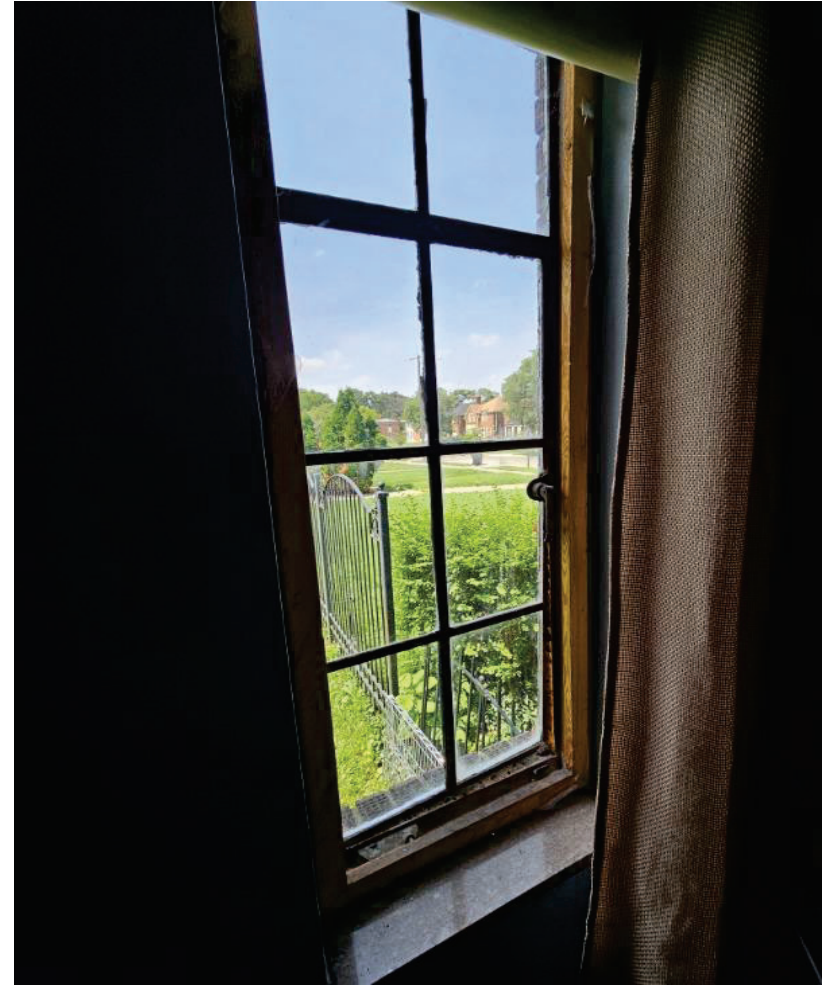
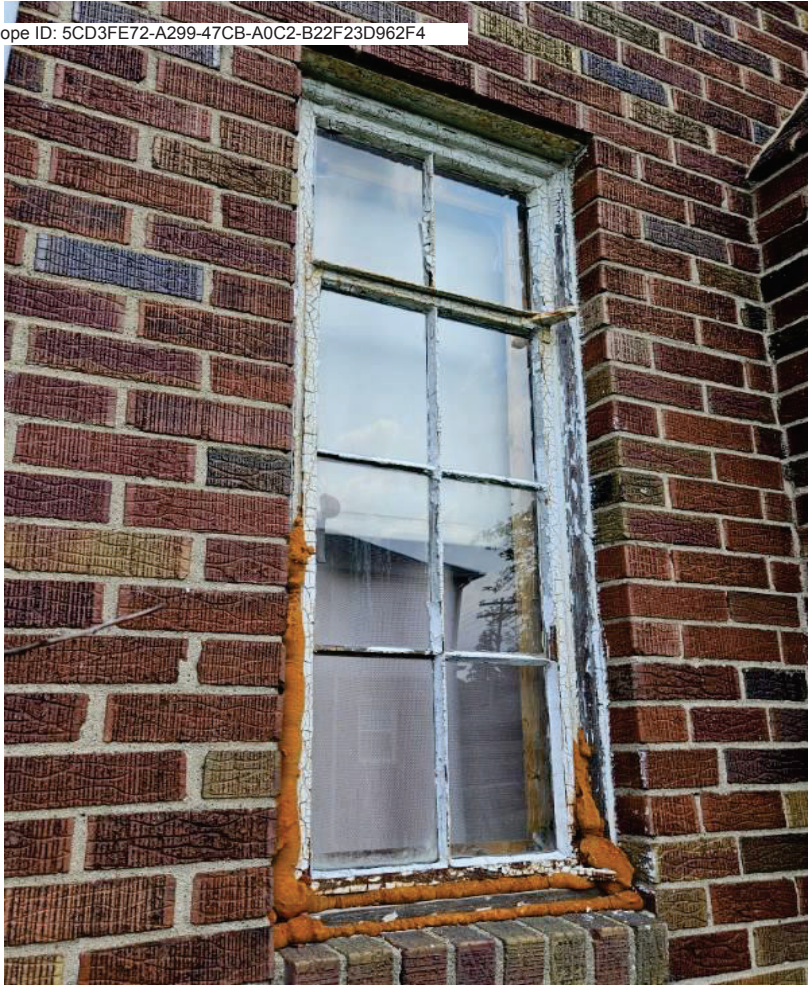
Unit 103 – Replace with single casement window (Grilled will be 2w x 5h to match)



4031 Fullerton St
101 – 102 – 103 - Exterior



4031 Fullerton St
101 – 102 – 103 - Interior



4031 Fullerton St

Unit 104 – Replace with single casement window (Grille will be 2w x 4h to match)

Docusign Envelope ID: 5CD3FE72-A299-47CB-A0C2-B22F23D962F4



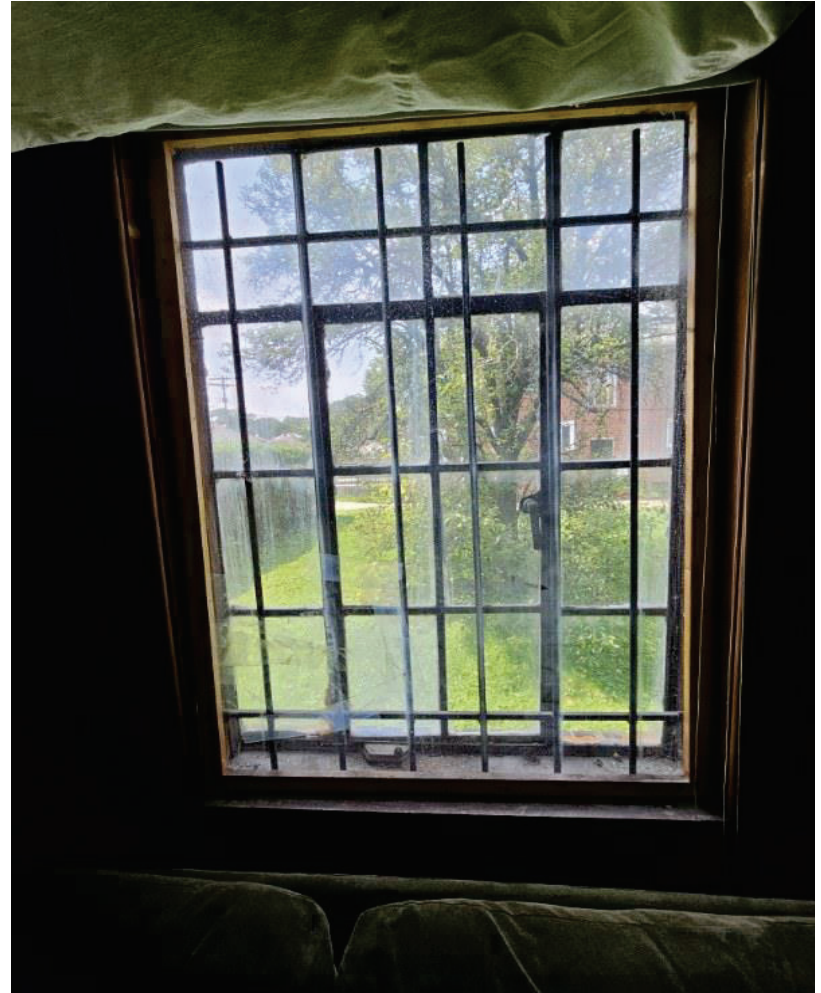
4031 Fullerton St

Unit 105 – Replace with single casement window (Grille will be 2w x 4h to match)



4031 Fullerton St

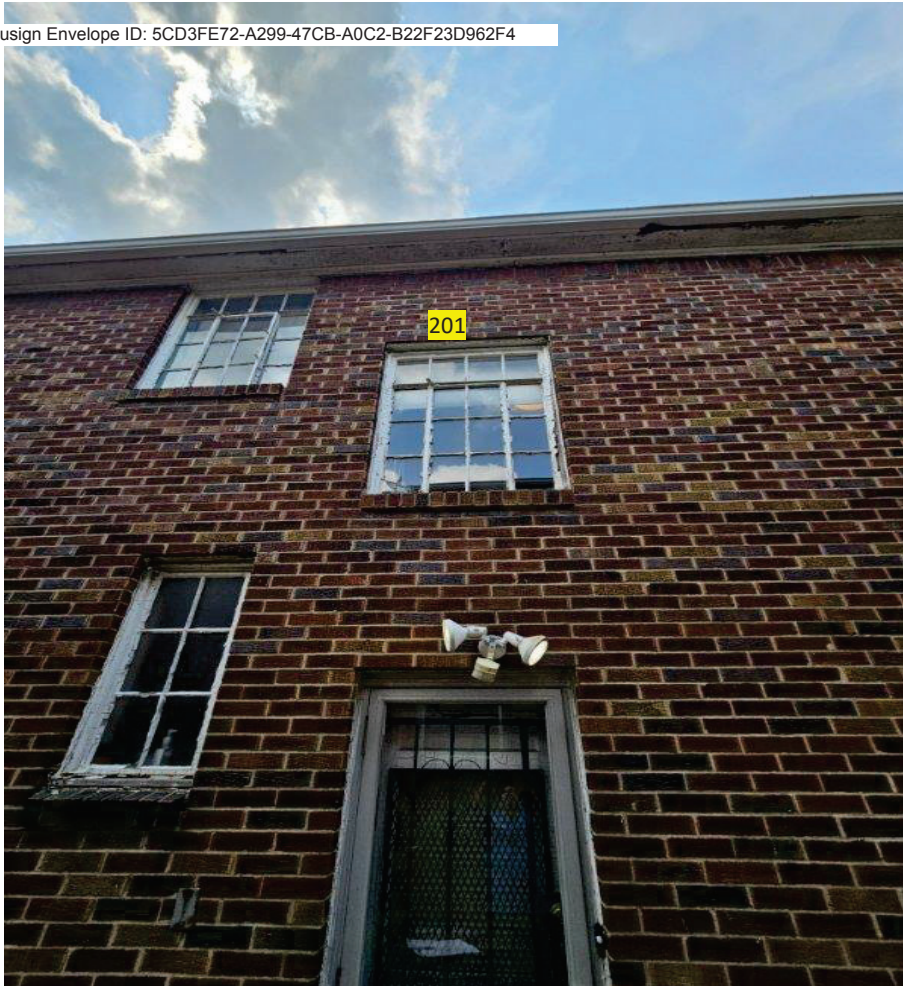
Unit 106 – Replace with double casement window (Grille will be 4w x 5h to match)



4031 Fullerton St
Unit 107 – Replace with single casement window (Grille will be 4w x 4h to match)



4031 Fullerton St
Unit 108 – Replace with single casement window (Grille will be 4w x 4h to match)



4031 Fullerton St

Unit 201 – Replace with fixed casement window (Grille will be 4w x 4h to match)
Window at top of stairs



4031 Fullerton St
202 – 203 – 204 - Exterior

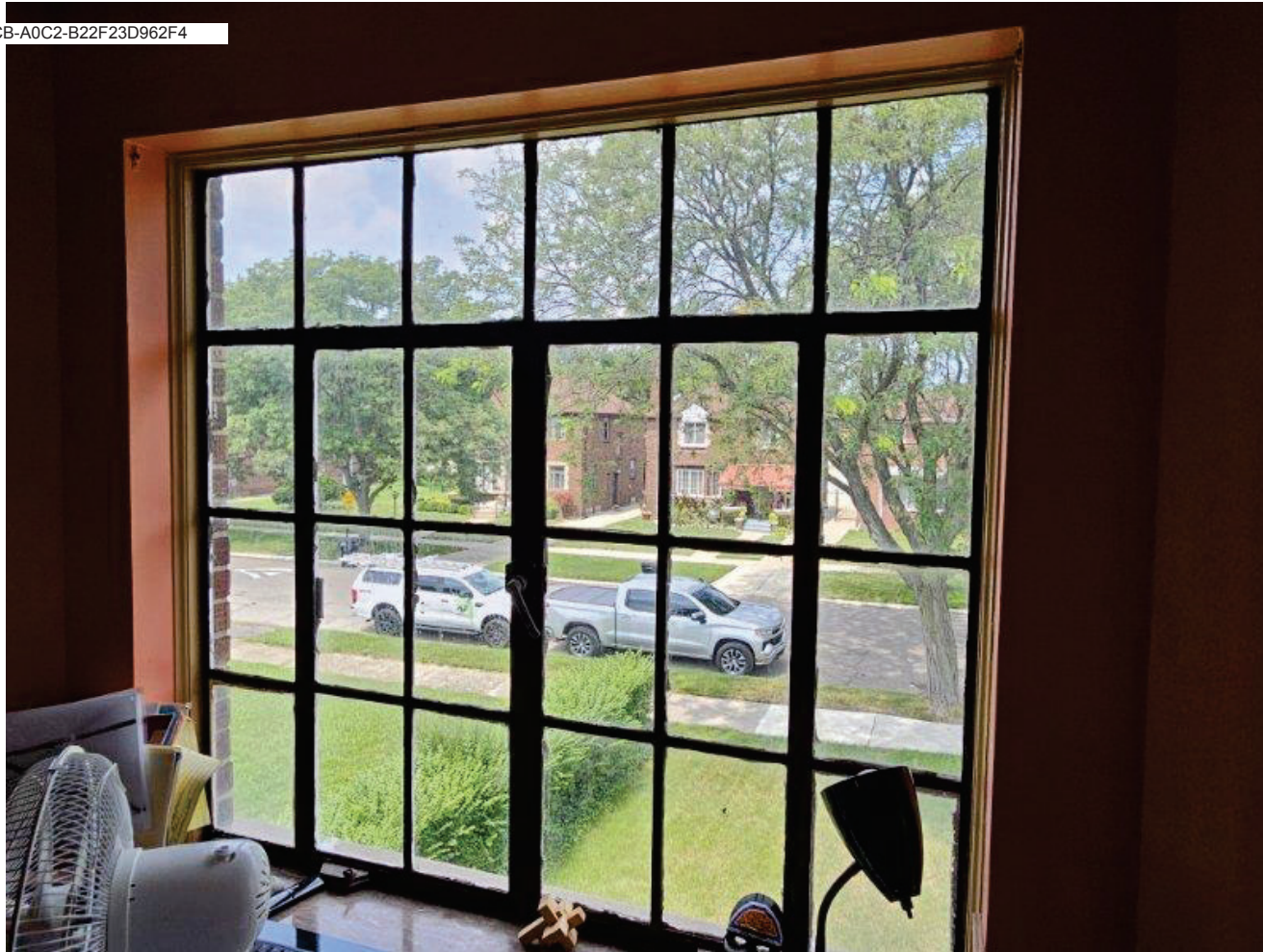


4031 Fullerton St
202 – 203 – 204 - Exterior

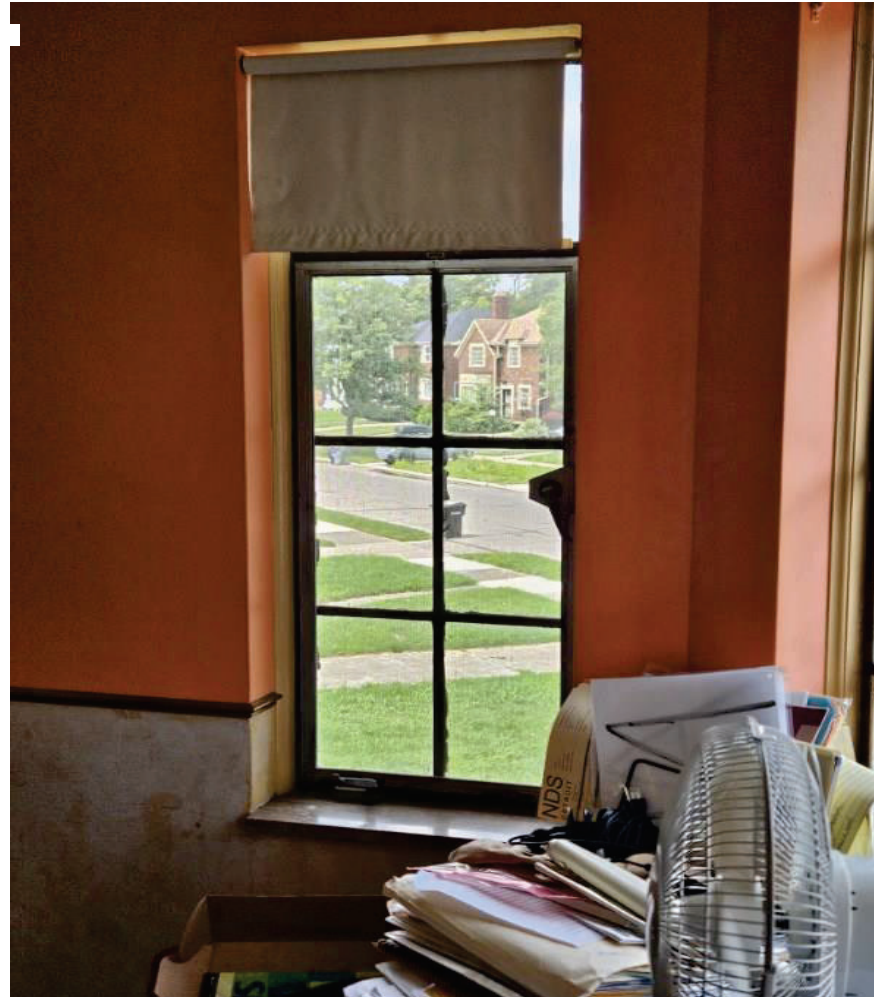


4031 Fullerton St

Unit 202 – Replace with single casement window (Grille will be 2w x 4h to match)

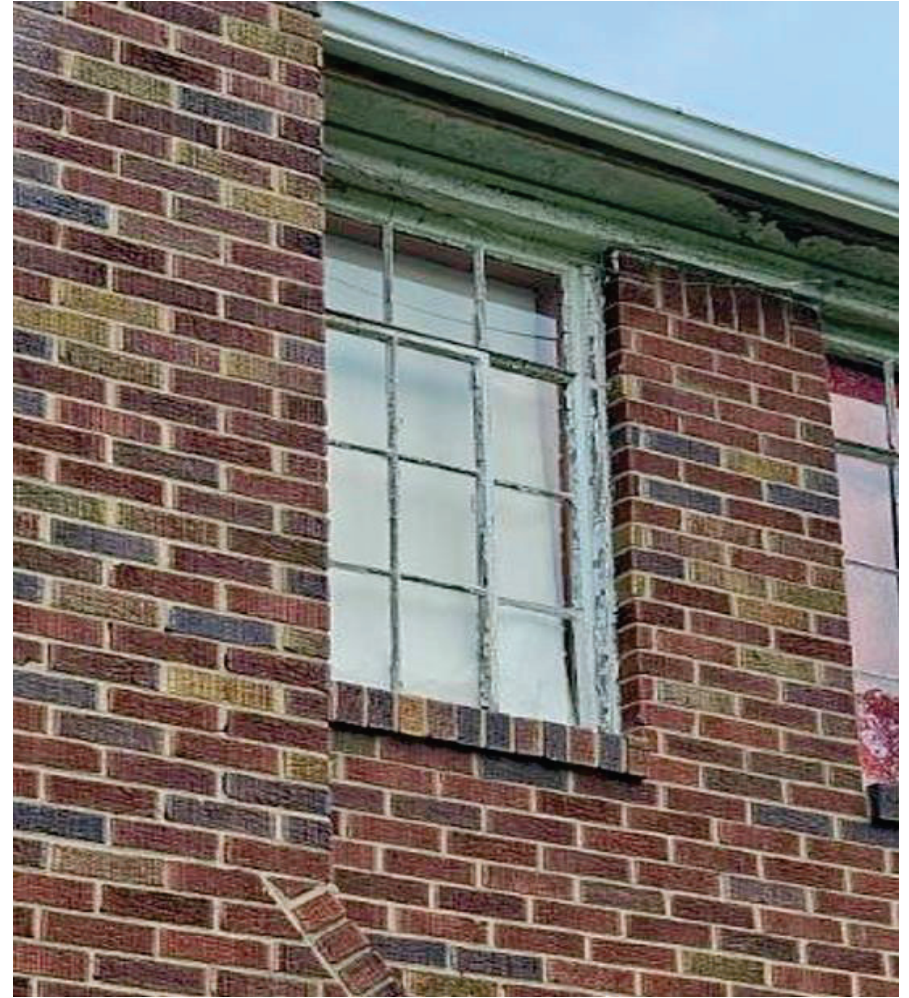


4031 Fullerton St
Unit 203 – Replace with fixed casement window (Grille will be 6w x 4h to match)



4031 Fullerton St

Unit 204 – Replace with single casement window (Grille will be 2w x 4h to match)



4031 Fullerton St

Unit 205 – Replace with single casement window (Grille will be 4w x 4h to match)

CASEMENT WINDOW

ADVANTAGES AND APPLICATIONS

The Renewal by Andersen® casement window consists of one or multiple sashes in a single frame. The sash can be hinged on the right or left side and pivots outward. Sash opening is controlled by a roto gear operator on the sill. A single sash lock lever activates multiple lock points to enhance security, and pulls the sash in tightly against the weatherstrip on the sash and frame. Insect screens are installed on the interior of the frame.



*Casement
Replacement Windows*

ADVANTAGES

- Allows the most ventilation of any window type.
- Open sash can "catch" breezes from multiple directions.
- Multiple weatherstrips provide a weather tight seal when sash is closed and locked.
- Patented Fibrex® material is more rigid than vinyl, allowing more glass area.
- Fibrex material with low-maintenance capstock gives a rich, low-luster finish to sash and frame, similar to painted wood.
- Smooth radius surfaces on frame and sash are pleasing to the eye and easier to clean.
- Mortise and tenon appearance on the interior and exterior sash and frame corners give a traditional hand-crafted look.

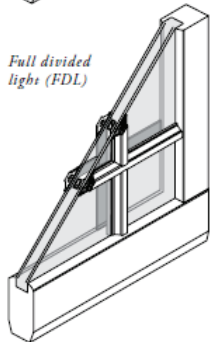
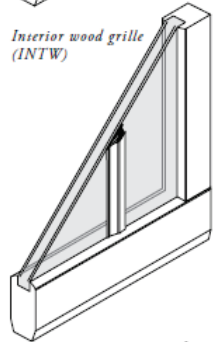
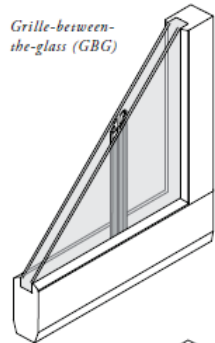
APPLICATIONS

- Widely used to replace other styles of windows.
- Offers dramatic design accents when combined with fixed windows.
- Recommended for use over countertops and other wide obstructions because operation is controlled by turning a handle—an easier motion than lifting or sliding sash.
- Should not be used in areas where the projecting sash could obstruct outside walkways.
- Visually compatible with other Renewal by Andersen products.
- Corrosion-resistant casement hardware is available for use in harsh and corrosive environments such as heavy industrial or coastal areas.



OPTIONS, cont.

CASEMENT WINDOW

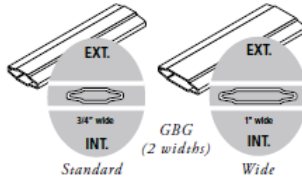


Available Grille Types

Three grille types are available. The interior and exterior sides of the grilles are color-coordinated with each side of the window frame. Consult the color combination charts in each window product section for detailed color information.

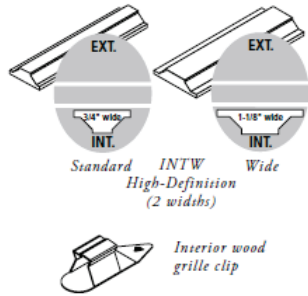
Grille-Between-the-Glass (GBG)

Sculpted aluminum grille members are manufactured between the glass panes, and are available in two widths. Enamel finish replicates interior and exterior face of window. If wood interior, interior facing surface will be gray.



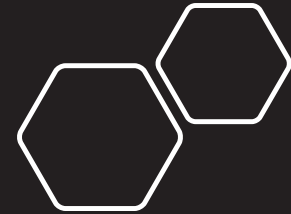
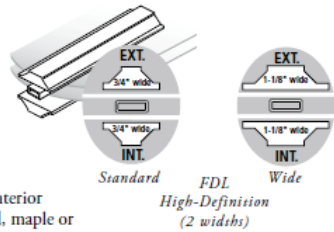
Interior Wood Grille (INTW)

With the option of hardwood maple or oak, these grilles snap into clips placed around the interior side of the sash and may be removed to clean the glass. These high-definition interior wood grilles are available in two different widths.



Full Divided Light (FDL) Grille

FDL grilles provide the classic look of a true divided light window. The high-definition exterior grille is made from Fibrex® material and is available in two different widths. Between the glass panes, an aluminum spacer stands slightly away from each pane to maintain thermal performance. The high-definition interior wood grille is available in hardwood, maple or oak and in two different widths, and may be permanently applied or removable.





FIBREX[®] MATERIAL: A BETTER ALTERNATIVE, A BETTER WINDOW

Reinventing the window

Innovation has been a hallmark of Andersen Corporation since its founding in 1903. From implementing “mass production” techniques in 1904 (nine years before Henry Ford), to producing the first completely assembled window unit in the industry (1926), to becoming the world’s largest specialized window frame factory in 1929, our guiding principle has always been to “make a product that is different and better.” Each step of the way we have incorporated the latest technologies, fine precision, and high standards in our quest to be better.

Introducing Fibrex[®] material

One of our most innovative ideas is Fibrex material. This revolutionary composite combines the strength and stability of wood with the low-maintenance features of vinyl. In fact, you might say it’s an evolutionary product—Andersen scientists developed the first hollow vinyl window in the U.S. in 1959, and engineered composite window materials in the 1960s and 1970s. In 1992, Andersen perfected composite window technology, and patented Fibrex material. Today, Fibrex material is the perfect choice for your new replacement windows.

| | Fibrex® Material | Other Materials |
|-------------------------------------|---|--|
| Strength | Because Fibrex® material is strong, we can make our sash and frames narrower. Narrower frames mean more glass, more view. | Vinyl frames are known to have a higher expansion/contraction rate and can bow, breaking the glass seal. |
| Insulation | Fibrex material has superior thermal insulating properties. Combined with Andersen® High-Performance™ Low-E4® glass, this helps your home stay warmer in winter and cooler in summer. You can save money on your energy bills. Your home feels more comfortable. | Aluminum window frames conduct heat and cold. Heat leaks out of your house in the winter and into your house in the summer. |
| Low Maintenance | Fibrex material never needs scraping or painting. It won't rot, decay or mold*. | Fiberglass frames are painted and may need regular maintenance. |
| Beauty | Renewal by Andersen replacement windows preserve the architectural beauty of your home. Frame and sash design reflect the shape and lines of your original windows. The unique extruded Fibrex material can be made into any kind of window—including curved specialty windows. | Most replacement windows have square profiles that may look artificial in your home. Vinyl frame material is often thicker, reducing glass area. Fiberglass can only be made into straight lineals. |
| Environmental Responsibility | 40% of the raw material by weight used to make Fibrex material is clean, reclaimed wood fiber. Reclaimed materials in the manufacturing process can also be reground and reused. Renewal by Andersen® windows meet Green Seal's science-based environmental certification standards as well as being ENERGY STAR® qualified for meeting strict energy efficiency criteria set by the U.S. Department of Energy. | Andersen windows are the only windows with Green Seal certification. Fiberglass is a thermoset material and cannot be reformed into new profiles. |
| Warranty | A window is not just glass and some framing material. It's a precise combination of glass, frame and quality installation. We back it all with a 20/2/10 Limited Warranty* that is one of the best in the business. | More than half of all remodeling firms have been in business less than four years.** Installation is rarely covered in the written warranty. |