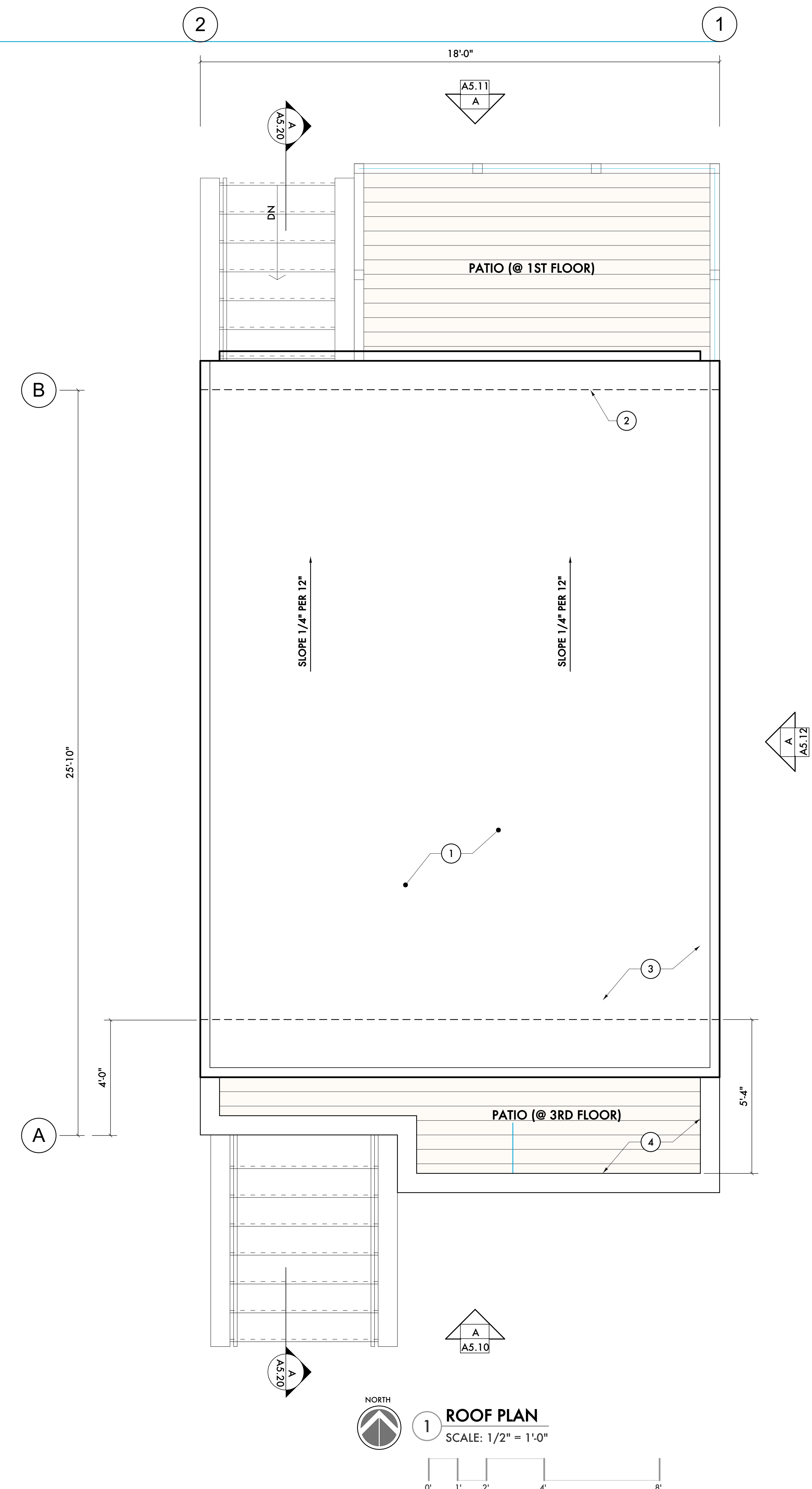


**KEYED NOTES:**

- ① SINGLE-PLY MEMBRANE, 40 MIL TPO OR PVC ON, (2) LAYERS OF 1 1/2" POLYISOCYANURATE INSULATION ON 5/8" WOOD SHEATHING ON ENGINEERED WOOD JOISTS AT 16" O.C., BATT INSULATION AT JOIST CAVITIES
- ② METAL GUTTER w/ DOWNSPOUT
- ③ PARAPET WALL - (2) PIECE, METAL WALL CAP/COPING ON 2X NAILER, TURN ROOF MEMBRANE UP PARAPET WALL AND UNDER WALL CAP/COPING
- ④ LIMESTONE COPING/WALL CAP



12/05/23	Historic Commission
11/29/23	Historic Commission
Date:	Issued For:
<b>Five on 8th Townhomes</b>	
1364-1368 Labrosse Detroit, Michigan 48226	
<b>studiozONE : DETROIT</b>	
architectural urban interior	DESIGN
350 Madison Avenue 4th Floor Detroit, Michigan 48226	studiozonedetroit.com 313.549.2790 (p) jpb@ware.house.com