

WALL CONSTRUCTION

- A INTERIOR PARTITION
 (1) LAYER 5/8", TYPE 'X' GYPSUM BOARD
 2X4 WOOD STUD
 (1) LAYER 5/8", TYPE 'X' GYPSUM BOARD

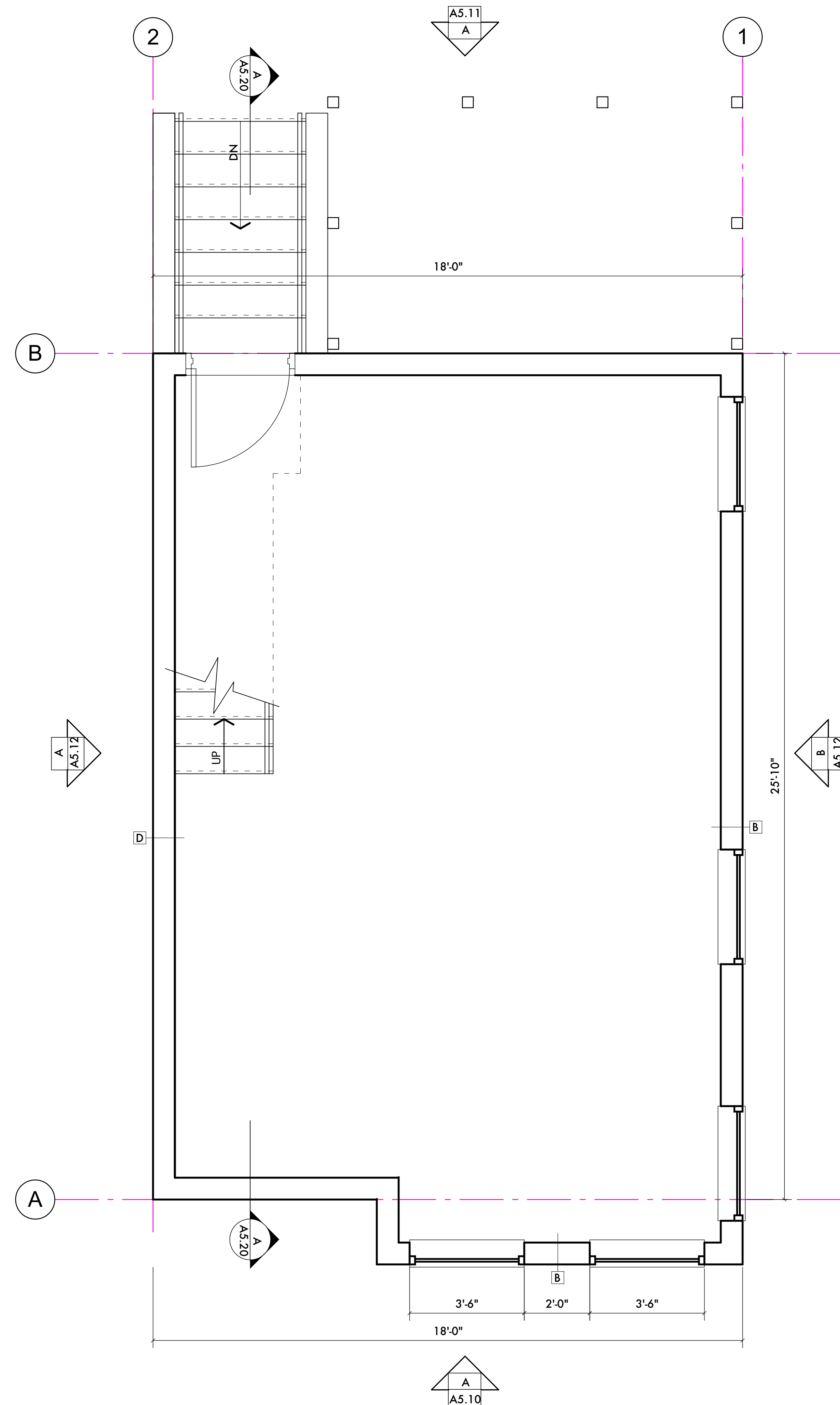
- B UNIT EXTERIOR WALL - MASONRY
 (1) LAYER 5/8", TYPE 'X' GYPSUM BOARD
 2X4 WOOD STUD, ON ZIP-IT SHEATHING,
 ON 1" AIRSPACE ON 4" FACE BRICK

- C UNIT EXTERIOR WALL - SIDING
 (1) LAYER 5/8", TYPE 'X' GYPSUM BOARD
 2X4 WOOD STUD, ON ZIP-IT SHEATHING,
 ON SIDING

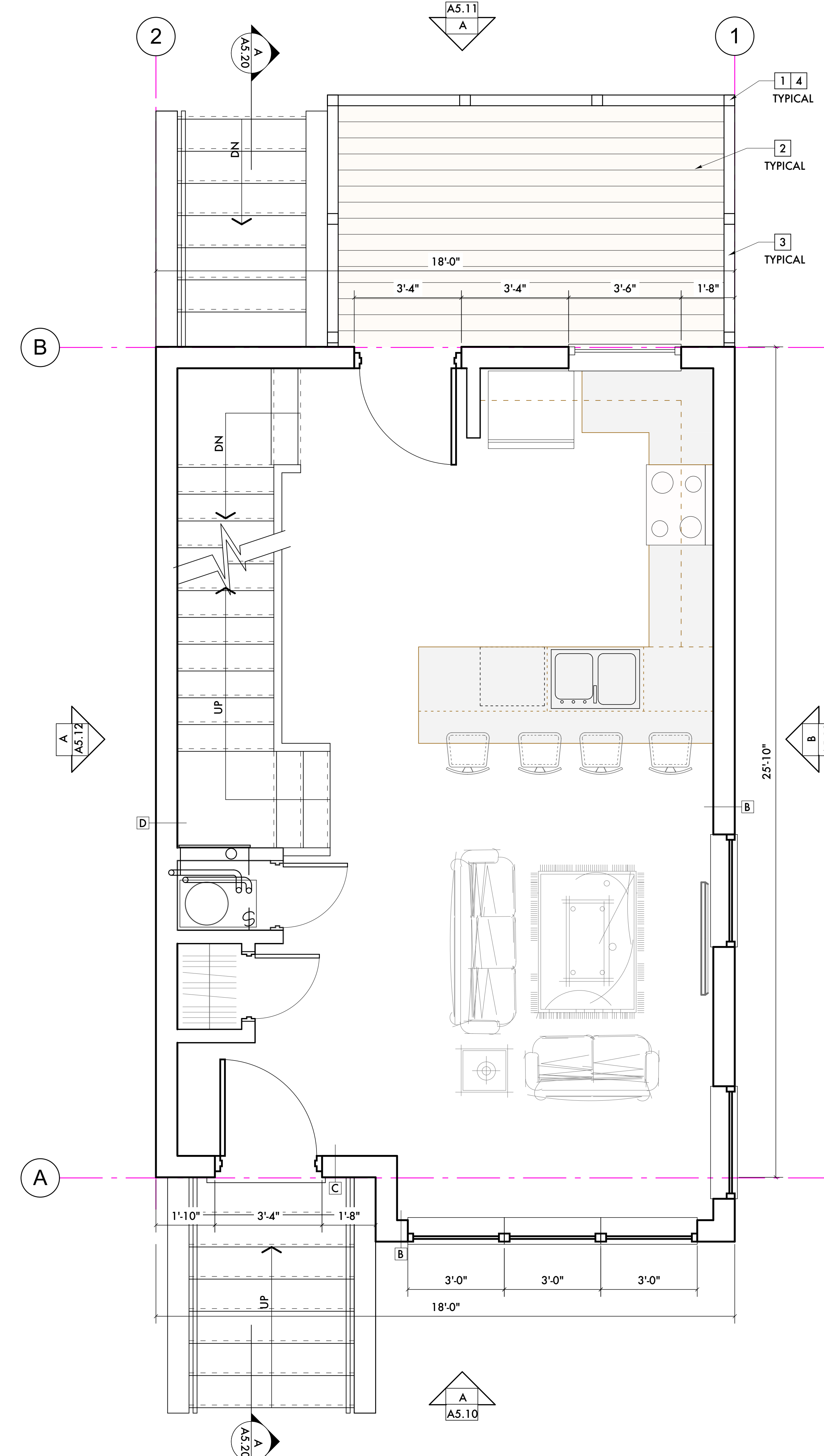
- D UNIT SEPARATION WALL
 (1) LAYER 5/8", TYPE 'X' GYPSUM BOARD
 2X4 WOOD STUD, ON FIRE RESISTANT
 SHEATHING, ON 2 X 4 WOOD STUD ON
 (1) LAYER 5/8" TYPE 'X' GYPSUM BOARD

KEYED NOTES:

- 1 4 X 4 PRESSURE TREATED WOOD POST
- 2 1 X 4 COMPOSITE LUMBER DECKING ON PRESSURE TREATED DECK STRUCTURE (SEE STRUCTURAL DRAWINGS FOR STRUCTURE INFORMATION) TREX, "SELECT", COLOR TBD
- 3 COMPOSITE LUMBER TOP RAIL, COLOR TO MATCH DECK BOARDS
- 4 COMPOSITE LUMBER TOP CAP AT EACH POST, COLOR TO MATCH DECK BOARDS



2 BASEMENT PLAN - END UNIT
 SCALE: 1/2" = 1'-0"
 NORTH



1 1ST FLOOR PLAN - END UNIT
 SCALE: 1/2" = 1'-0"
 NORTH

12/05/23 Historic Commission
 Date: Issued For:
Five on 8th Townhomes
 1364-1368 Labrosse
 Detroit, Michigan 48226
studiozONE : DETROIT
 architectural | urban | interior DESIGN
 350 Madison Avenue
 4th Floor
 Detroit, Michigan 48226
 studiozonedetroit.com
 313.549.2790 (t)
 info@studiozonedetroit.com

Project Number: 2023
 Sheet Title:
FLOOR PLAN - END UNITS