

-Description of why replacement is necessary

Existing siding (approximately 40 years old) was separating from north wall, as it was cracking and falling off. Moisture and rain drenched the vapor barrier and sheet insulation causing its deterioration, moisture also breached inside dampening interior walls. Additionally, puddling penetrated window sills damaging them and causing damage to the sashes resulting in inoperability.

-Description of current condition

North wall (alley) is approximately 70% covered in new siding matching material and color of previous siding.

New insulation and Tyvek on remainder.

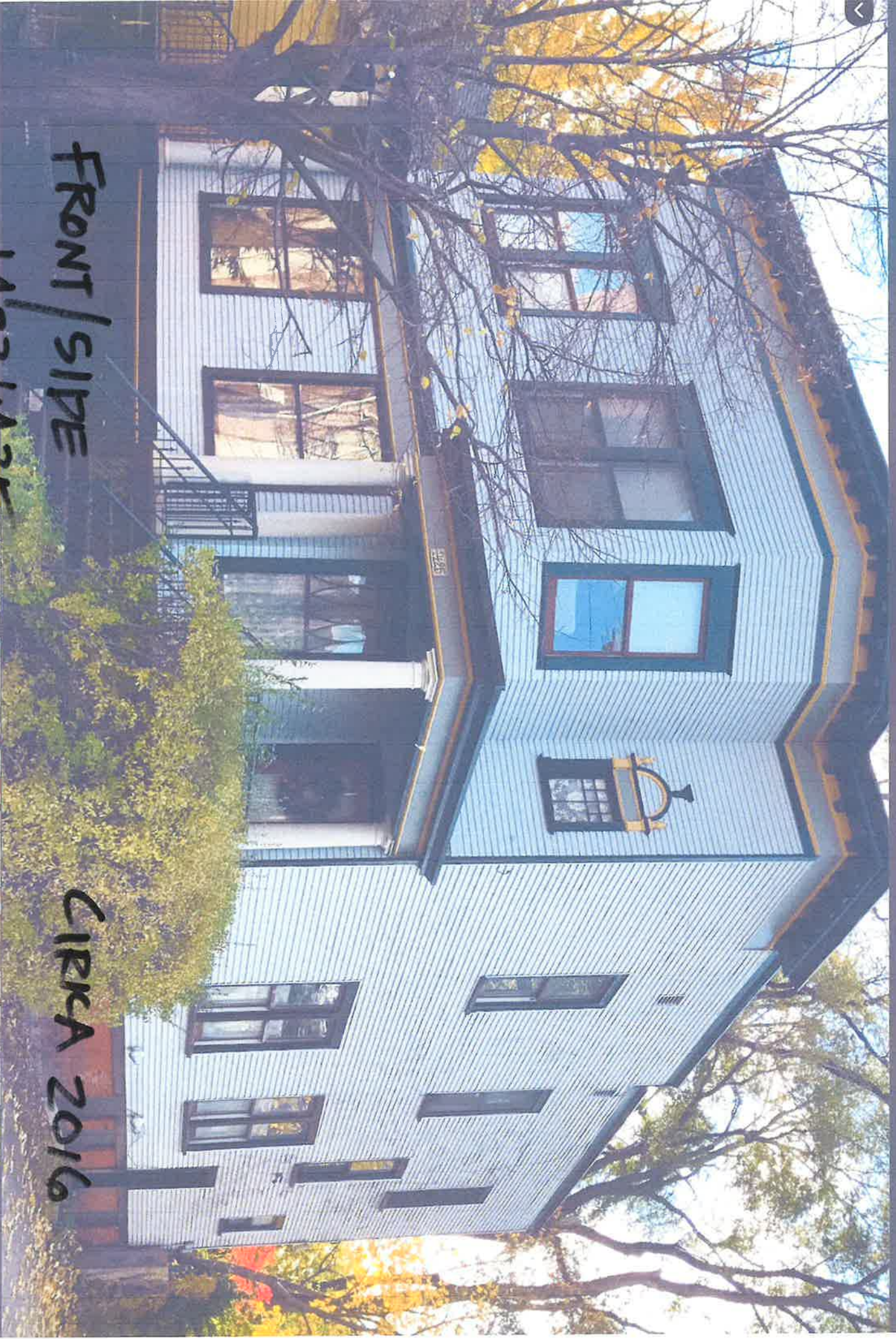
9 new wooden double hung windows (Anderson)

-Description of project

New insulation, siding and windows on north wall (ally side).

-Photographs, current and from 2016

See attached.



FRONT / SIDE

1423/1425

CIRCA 2016





NORTH SIDE ELEVATION — PRESENT



CIRCA 2016

FRONT - 1423 6th