

Scope of work

1. Replace existing windows with new Pella Lifestyle windows except windows marked in red
2. Install James Hardie Stucco Panel and trim on house in areas noted in pictures
3. Inst James Hardie soffit to house and garage
4. Replace front entry door with Thermatru CCR100R Classic Craft Mahogany Grain Fiberglass door
5. Replace rear kitchen entry door with Thermatru S6021-LE Smooth Star Fiberglass door with transom
6. Install Larson aluminum storm door to rear kitchen entry door
7. Replace roof on garage with GAF Timberline HDZ shingles
8. Replace 2 garage overhead doors with Haas 600 series non-insulated doors
9. Install 6" aluminum K-style gutters on house and garage



**new OSB, housewrap
and James Hardie
Stucco panel and trim**

Sicheneder
2432 W Boston Blvd • Detroit,
Michigan 48206

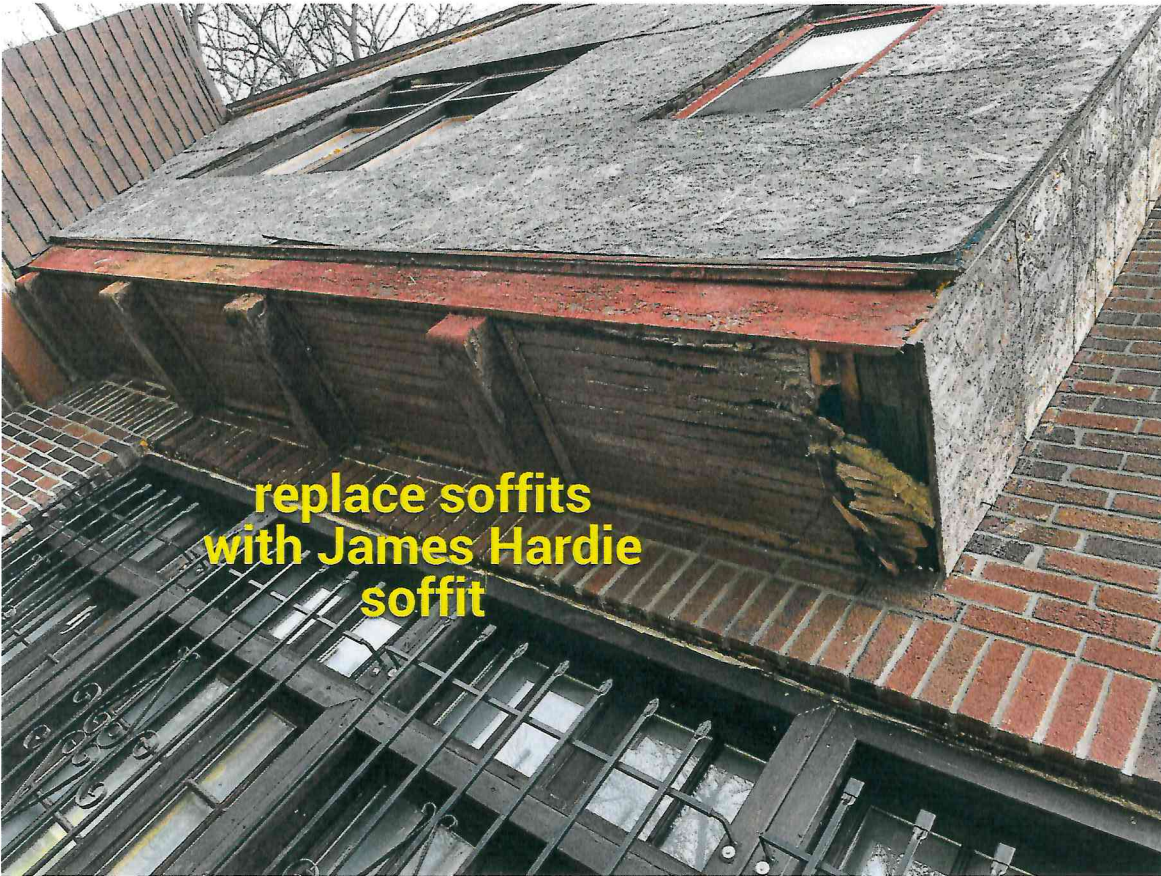
Wed, Jun 15 03:25 pm
by Steve Witkowski



replace with
James Hardie
stucco panels
and trim

Sicheneder
2432 W Boston Blvd • Detroit,
Michigan 48206

Wed, Jun 15 03:26 pm
by Steve Witkowski



replace soffits
with James Hardie
soffit

Sicheneder
2432 W Boston Blvd • Detroit,
Michigan 48206

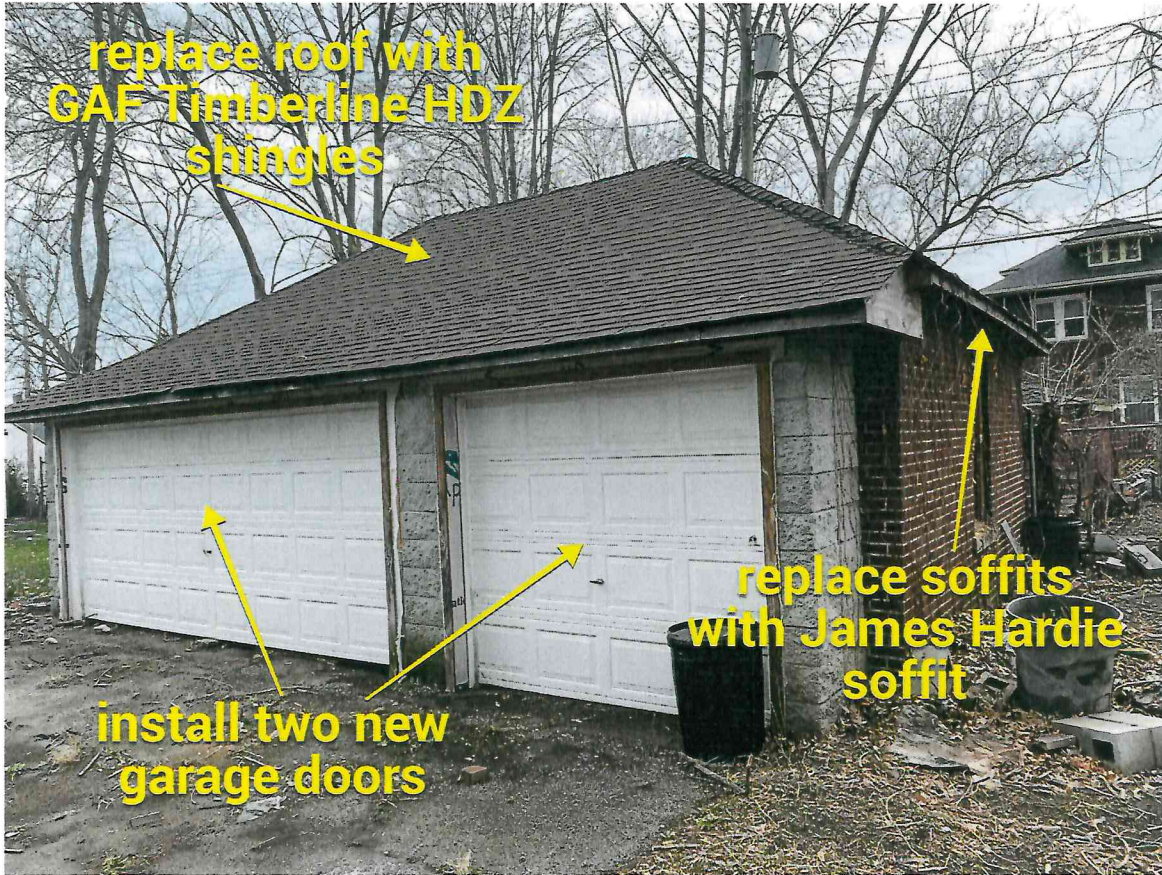
Wed, Apr 5 09:44 am
by Steve Witkowski



**James Hardie
stucco panels
and trim**

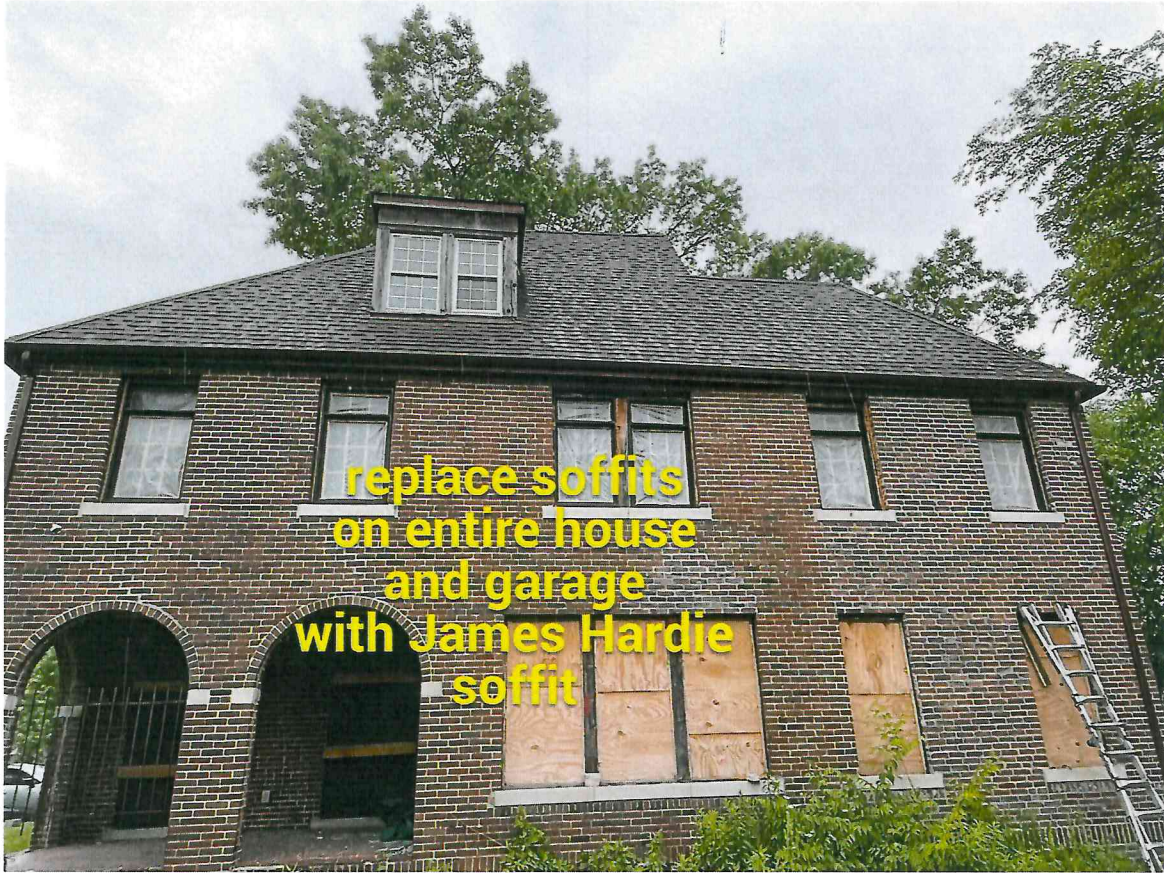
Sicheneder
2432 W Boston Blvd • Detroit,
Michigan 48206

Wed, Apr 5 09:48 am
by Steve Witkowski



Sicheneder
2432 W Boston Blvd • Detroit,
Michigan 48206

Wed, Apr 5 09:48 am
by Steve Witkowski



Sicheneder
2432 W Boston Blvd • Detroit,
Michigan 48206

Thu, Jun 15 01:08 pm
by James Halfacer

Window opening	Existing window	Condition	Proposed Replacement
1	Original casement	fair	Pella Lifestyle casement w/ GBG's
2	Original casement	fair	Pella Lifestyle casement w/ GBG's
3	no work		
4	no work		
5	no work		
7	no work		
8	wood double hung	missing parts/sashes	Pella Lifestyle Double Hung w/ GBG's
9	wood double hung	missing parts/sashes	Pella Lifestyle Double Hung w/ GBG's
10	removed		Pella Lifestyle Double Hung w/ GBG's
11	removed		Pella Lifestyle Double Hung w/ GBG's
12	removed		Pella Lifestyle Double Hung w/ GBG's
13	removed		Pella Lifestyle Double Hung w/ GBG's
14	removed		Pella Lifestyle Double Hung w/ GBG's
15	removed		Pella Lifestyle Double Hung w/ GBG's
16	removed		Pella Lifestyle Fixed w/ GBG's
17	removed		Pella Lifestyle Double Hung w/ GBG's
18	removed		Pella Lifestyle Double Hung w/ GBG's
19	removed		Pella Lifestyle Fixed w/ GBG's
20	vinyl single hung		Pella Lifestyle Double Hung w/ GBG's
21	vinyl single hung		Pella Lifestyle Double Hung w/ GBG's
22	vinyl triple slider		Pella Lifestyle Double Hung w/ GBG's
23	original no work		Pella Lifestyle Double Hung w/ GBG's
24	original no work		Pella Lifestyle Double Hung w/ GBG's
25	original no work		Pella Lifestyle Double Hung w/ GBG's
26	original no work		Pella Lifestyle Double Hung w/ GBG's
27	casement/awning	not original/incomplete	Pella Lifestyle Double Hung w/ GBG's
28	casement/awning	not original/incomplete	Pella Lifestyle Double Hung w/ GBG's
29	casement/awning	not original/incomplete	Pella Lifestyle Double Hung w/ GBG's
30	casement/awning	not original/incomplete	Pella Lifestyle Double Hung w/ GBG's
31	vinyl single hung		Pella Lifestyle Double Hung w/ GBG's
32	vinyl single hung		Pella Lifestyle Double Hung w/ GBG's
33	vinyl single hung		Pella Lifestyle Double Hung w/ GBG's

Window opening	Existing window	Condition	Proposed Replacement
34	vinyl single hung		Pella Lifestyle Double Hung w/ GBG's
35	vinyl single hung		Pella Lifestyle Double Hung w/ GBG's Obscure tempered
36	casement/awning	not original/incomplete	Pella Lifestyle Double Hung w/ GBG's
37	casement/awning	not original/incomplete	Pella Lifestyle Double Hung w/ GBG's
38	casement/awning	not original/incomplete	Pella Lifestyle Double Hung w/ GBG's
39	casement/awning	not original/incomplete	Pella Lifestyle Double Hung w/ GBG's
40	casement/awning	not original/incomplete	Pella Lifestyle Double Hung w/ GBG's
41	casement/awning	not original/incomplete	Pella Lifestyle Double Hung w/ GBG's
42	casement/awning	not original/incomplete	Pella Lifestyle Double Hung w/ GBG's
43	casement/awning	not original/incomplete	Pella Lifestyle Double Hung w/ GBG's
44	vinyl single hung		Pella Lifestyle Double Hung w/ GBG's Obscure Tempered
45	casement/awning	not original/incomplete	Pella Lifestyle Double Hung w/ GBG's
46	casement/awning	not original/incomplete	Pella Lifestyle Double Hung w/ GBG's
47	wood arched fixed		Pella Lifestyle Fixed w/ GBG's
48	vinyl triple slider		Pella Lifestyle Double Hung w/ GBG's
49	removed		Pella Lifestyle Double Hung w/ GBG's
50	vinyl single hung		Pella Lifestyle Double Hung w/ GBG's
51	vinyl single hung		Pella Lifestyle Double Hung w/ GBG's
52	vinyl single hung		Pella Lifestyle Double Hung w/ GBG's
53	wood single hung	missing parts/ glass	Pella Lifestyle Awning w/GBG's
54	original wood casement	fair	Pella Lifestyle casement w/ GBG's
55	original single hung	fair	Pella Lifestyle Double Hung w/ GBG's
56	original single hung	fair	Pella Lifestyle Double Hung w/ GBG's
57	removed		Pella Lifestyle Double Hung w/ GBG's Obscure Tempered
58	vinyl single hung		Pella Lifestyle Double Hung w/ GBG's
G1	original wood single hung	poor/ missing parts	Pella Lifestyle Double Hung w/ GBG's
G2	original wood single hung	poor/ missing parts	Pella Lifestyle Double Hung w/ GBG's
porch door 1	French door	unknown	Single Entry Full Light Pella Reserve French door
porch door 2	French door	unknown	Single Entry Full Light Pella Reserve French door
Front entry door	Wood	Damaged	Therma-Tru Classic Craft Mahogany Grain
Kitchen entry door	6 panel steel, no transom		Therma-Tru half light with Transom



front entry door



47

52

42 43

44

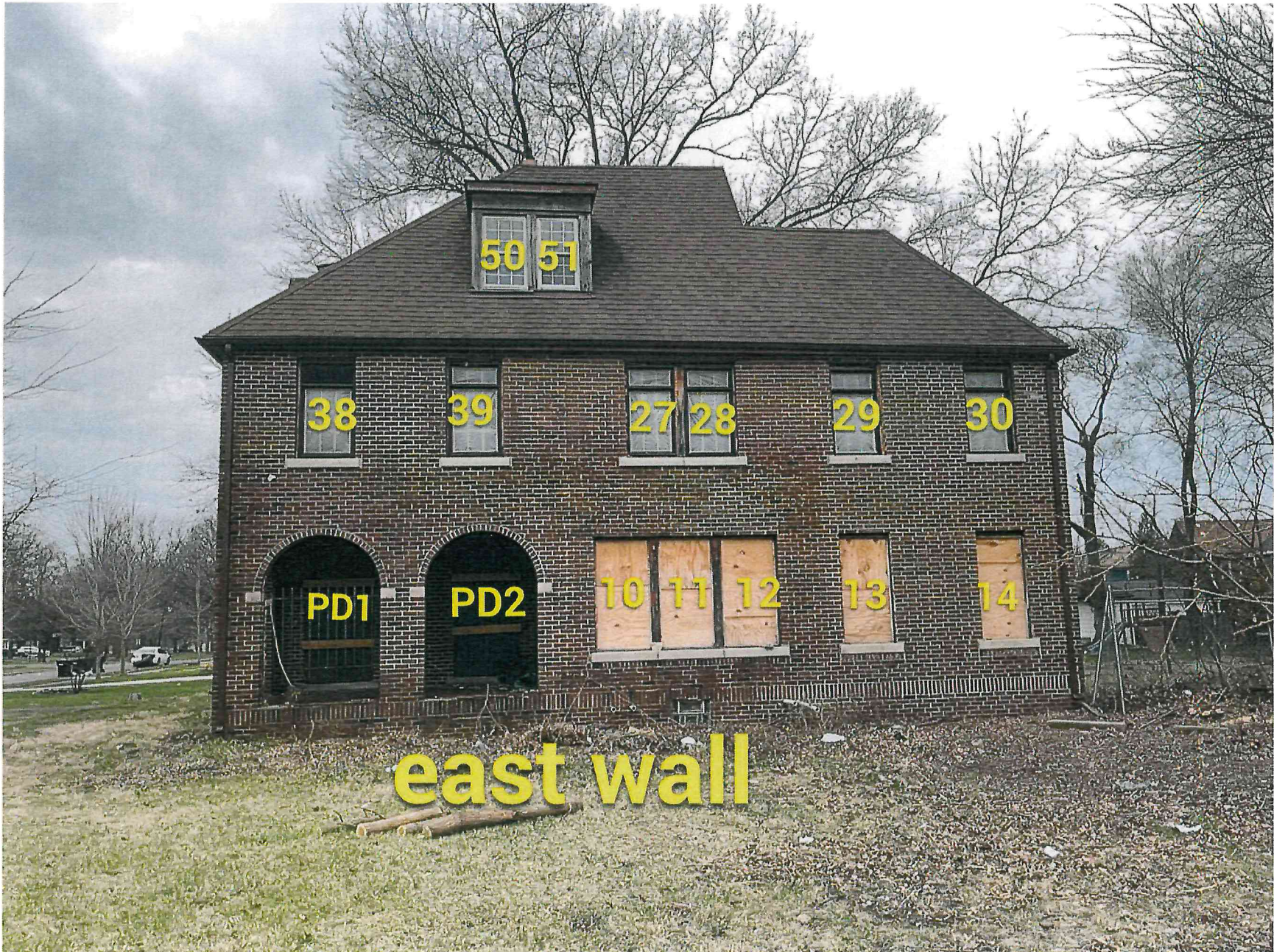
36

32

no work
3 4 5 6 7

8, 9

south wall



east wall



north wall

kitchen entry door



46

22

23

56 55

24 25 26

no work

40

41

54

1, 2

west wall



Porch door 1

Porch door 2



Sicheneder
2432 W Boston Blvd • Detroit,
Michigan 48206

Thu, Jun 15 10:39 am
by James Halfacer



Sicheneder
2432 W Boston Blvd • Detroit,
Michigan 48206

Thu, Jun 15 10:46 am
by James Halfacer



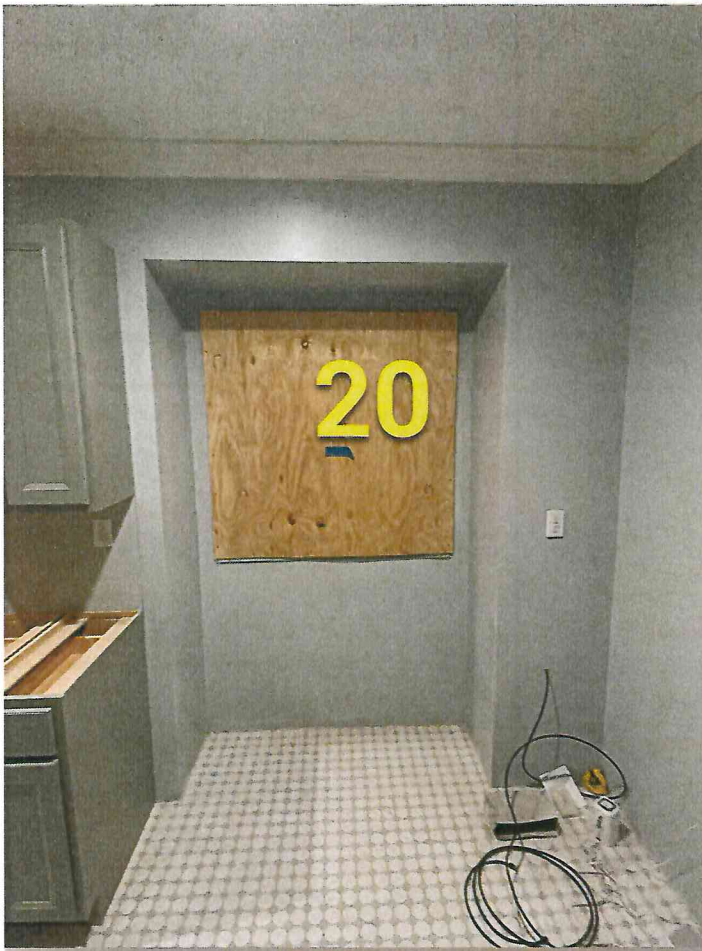
Sicheneder
2432 W Boston Blvd • Detroit, Michigan 48206

Thu, Jun 15 11:08 am
by Bruce Ellis



Sicheneder
2432 W Boston Blvd • Detroit, Michigan 48206

Thu, Jun 15 11:08 am
by Bruce Ellis



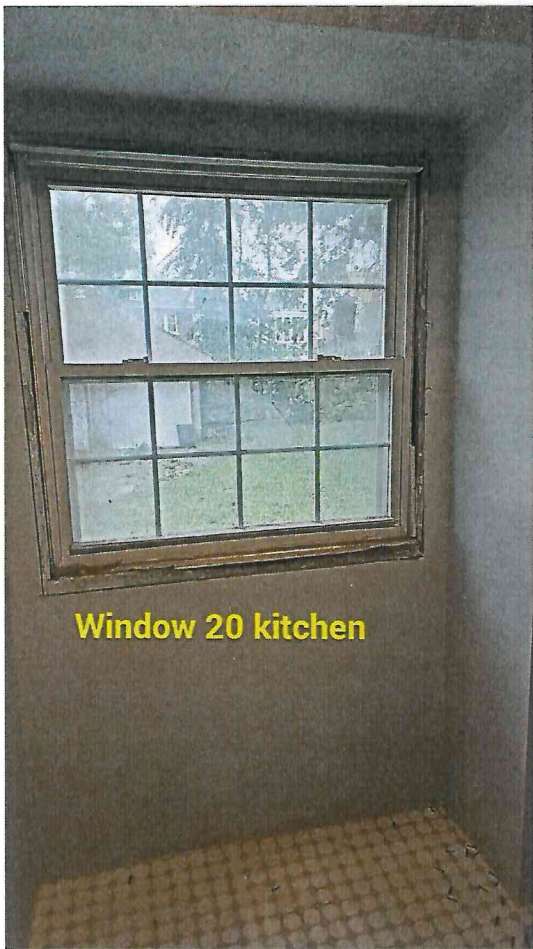
Sicheneder
2432 W Boston Blvd • Detroit, Michigan 48206

*Thu, Jun 15 11:19 am
by James Halfacer*



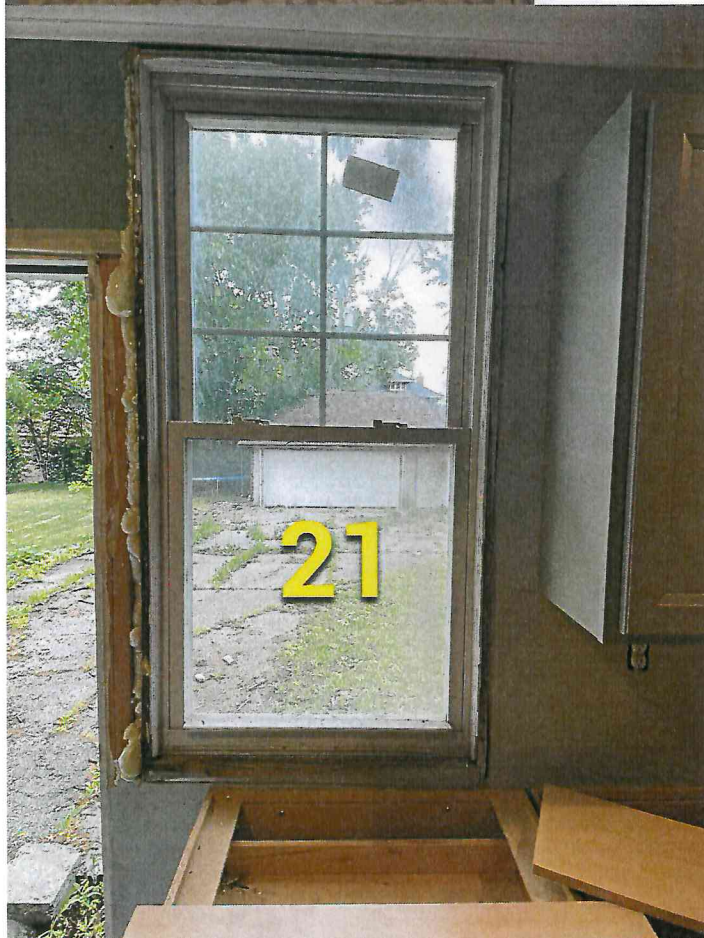
Sicheneder
2432 W Boston Blvd • Detroit, Michigan 48206

*Thu, Jun 15 11:19 am
by James Halfacer*



Sicheneder
2432 W Boston Blvd • Detroit, Michigan 48206

Thu, Jun 15 11:28 am
by Bruce Ellis



Sicheneder
2432 W Boston Blvd • Detroit, Michigan 48206

Thu, Jun 15 11:29 am
by James Halfacer



Sicheneder
2432 W Boston Blvd • Detroit, Michigan 48206

Thu, Jun 15 11:29 am
by James Halfacer



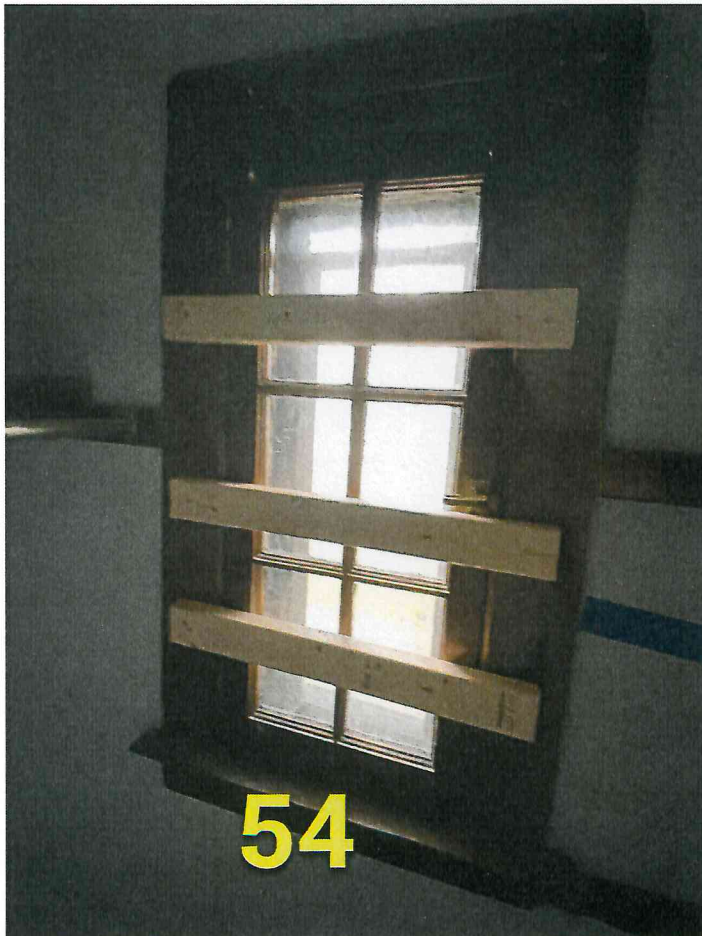
Sicheneder
2432 W Boston Blvd • Detroit, Michigan 48206

Thu, Jun 15 11:30 am
by James Halfacer



Sicheneder
2432 W Boston Blvd • Detroit,
Michigan 48206

Thu, Jun 15 11:36 am
by James Halfacer



Sicheneder
2432 W Boston Blvd • Detroit, Michigan 48206

Thu, Jun 15 11:46 am
by James Halfacer



Sicheneder
2432 W Boston Blvd • Detroit, Michigan 48206

*Thu, Jun 15 11:49 am
by James Halfacer*



Sicheneder
2432 W Boston Blvd • Detroit, Michigan 48206

*Thu, Jun 15 11:50 am
by James Halfacer*



Sicheneder
2432 W Boston Blvd • Detroit, Michigan 48206

*Thu, Jun 15 11:52 am
by James Halfacer*



Sicheneder
2432 W Boston Blvd • Detroit, Michigan 48206

*Thu, Jun 15 11:53 am
by James Halfacer*



Sicheneder
2432 W Boston Blvd • Detroit, Michigan 48206

*Thu, Jun 15 11:55 am
by James Halfacer*



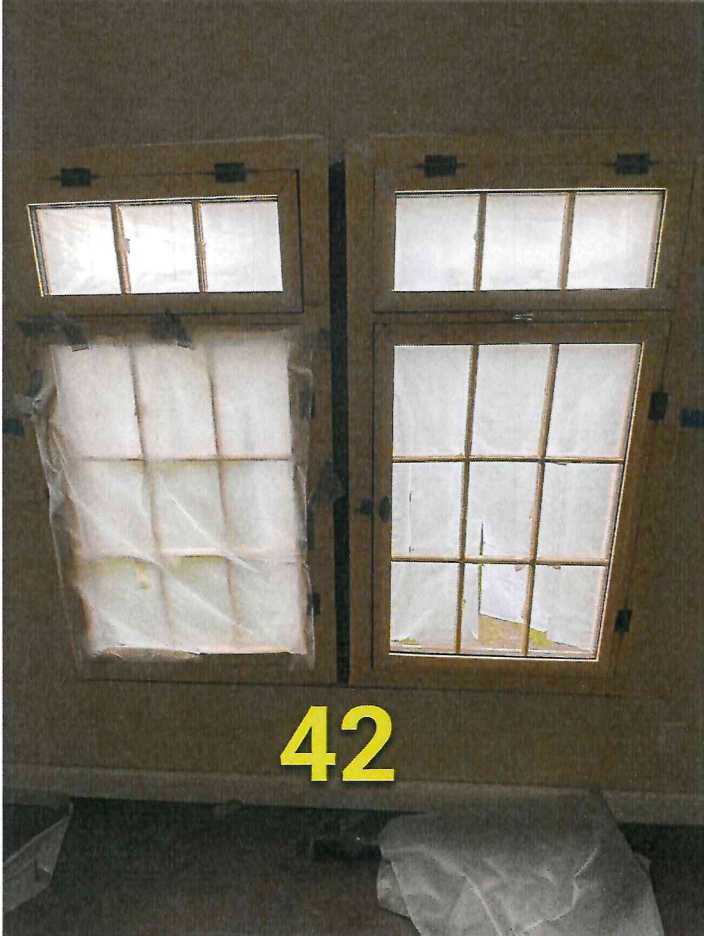
Sicheneder
2432 W Boston Blvd • Detroit, Michigan 48206

*Thu, Jun 15 11:58 am
by James Halfacer*



Sicheneder
2432 W Boston Blvd • Detroit, Michigan 48206

*Thu, Jun 15 11:59 am
by James Halfacer*



Sicheneder
2432 W Boston Blvd • Detroit, Michigan 48206

*Thu, Jun 15 12:01 pm
by James Halfacer*



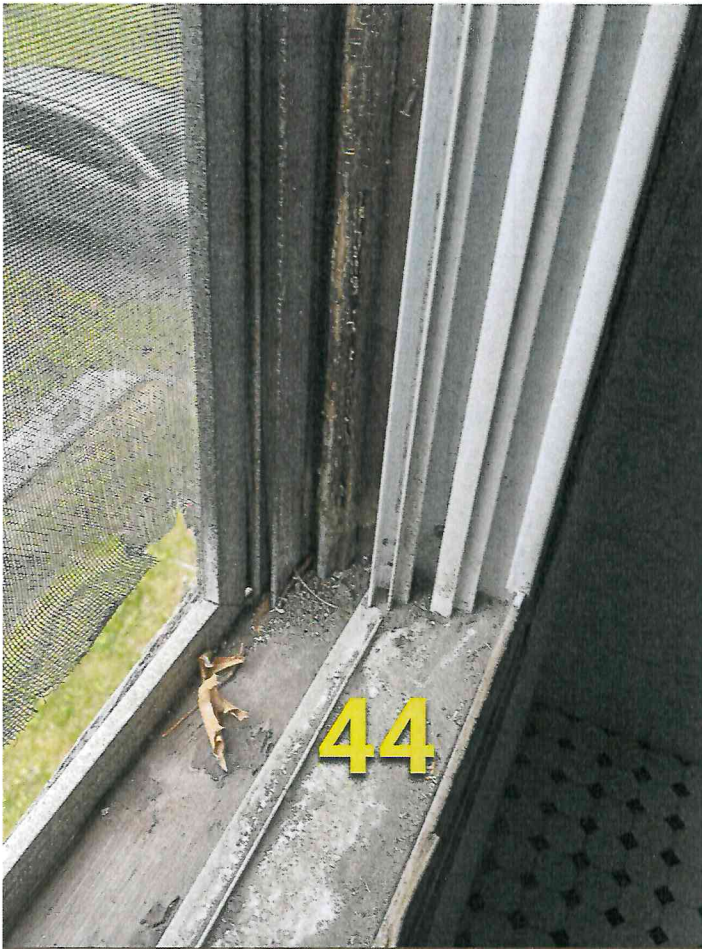
Sicheneder
2432 W Boston Blvd • Detroit, Michigan 48206

Thu, Jun 15 12:02 pm
by James Halfacer



Sicheneder
2432 W Boston Blvd • Detroit, Michigan 48206

Thu, Jun 15 12:05 pm
by James Halfacer



Sicheneder
2432 W Boston Blvd • Detroit, Michigan 48206

Thu, Jun 15 12:07 pm
by James Halfacer



Sicheneder
2432 W Boston Blvd • Detroit, Michigan 48206

Thu, Jun 15 12:07 pm
by James Halfacer



Sicheneder
2432 W Boston Blvd • Detroit, Michigan 48206

Thu, Jun 15 12:07 pm
by James Halfacer



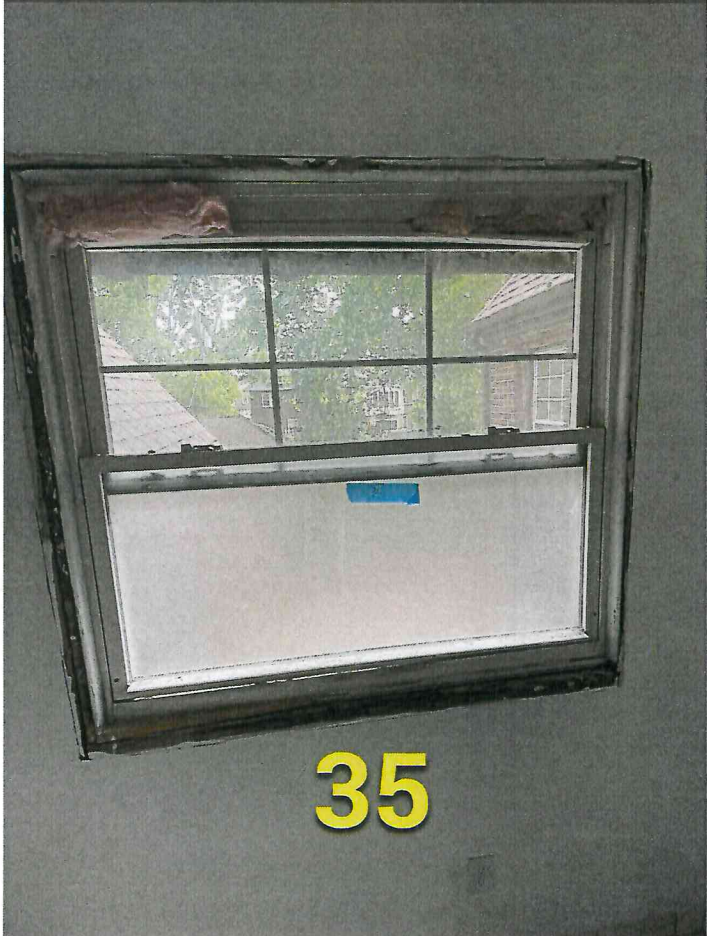
Sicheneder
2432 W Boston Blvd • Detroit, Michigan 48206

Thu, Jun 15 12:07 pm
by James Halfacer



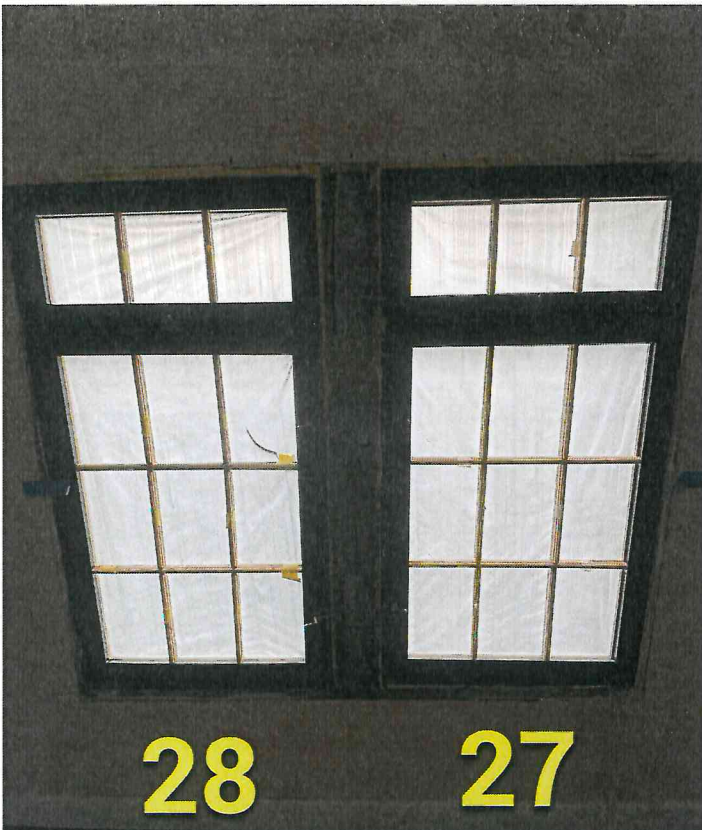
Sicheneder
2432 W Boston Blvd • Detroit, Michigan 48206

*Thu, Jun 15 12:08 pm
by James Halfacer*



Sicheneder
2432 W Boston Blvd • Detroit, Michigan 48206

*Thu, Jun 15 12:11 pm
by James Halfacer*



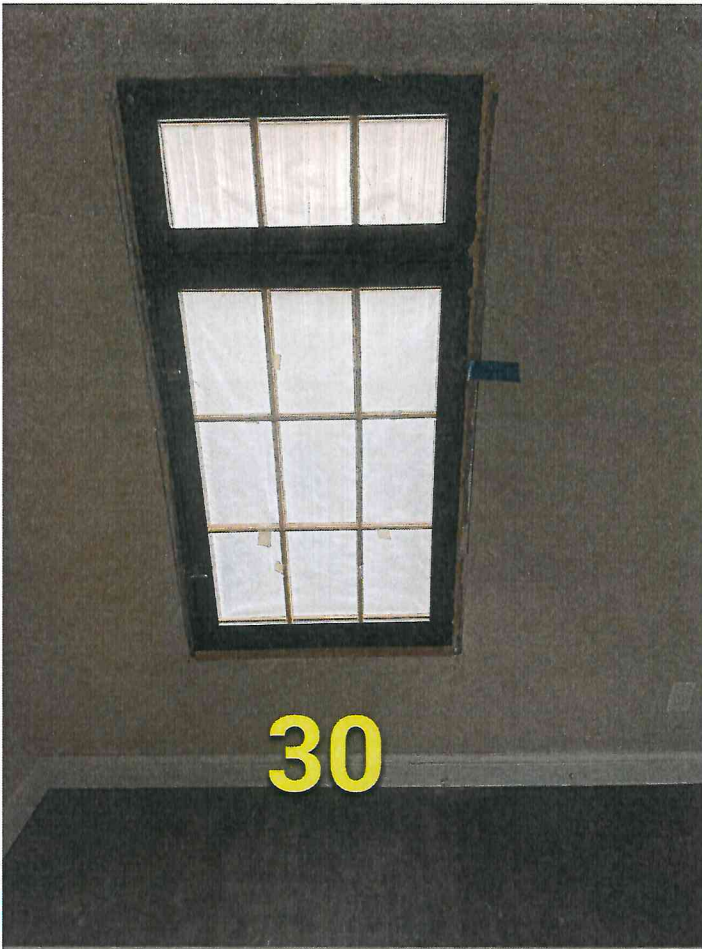
Sicheneder
2432 W Boston Blvd • Detroit, Michigan 48206

Thu, Jun 15 12:14 pm
by James Halfacer



Sicheneder
2432 W Boston Blvd • Detroit, Michigan 48206

Thu, Jun 15 12:16 pm
by James Halfacer



Sicheneder
2432 W Boston Blvd • Detroit, Michigan 48206

Thu, Jun 15 12:16 pm
by James Halfacer



Sicheneder
2432 W Boston Blvd • Detroit, Michigan 48206

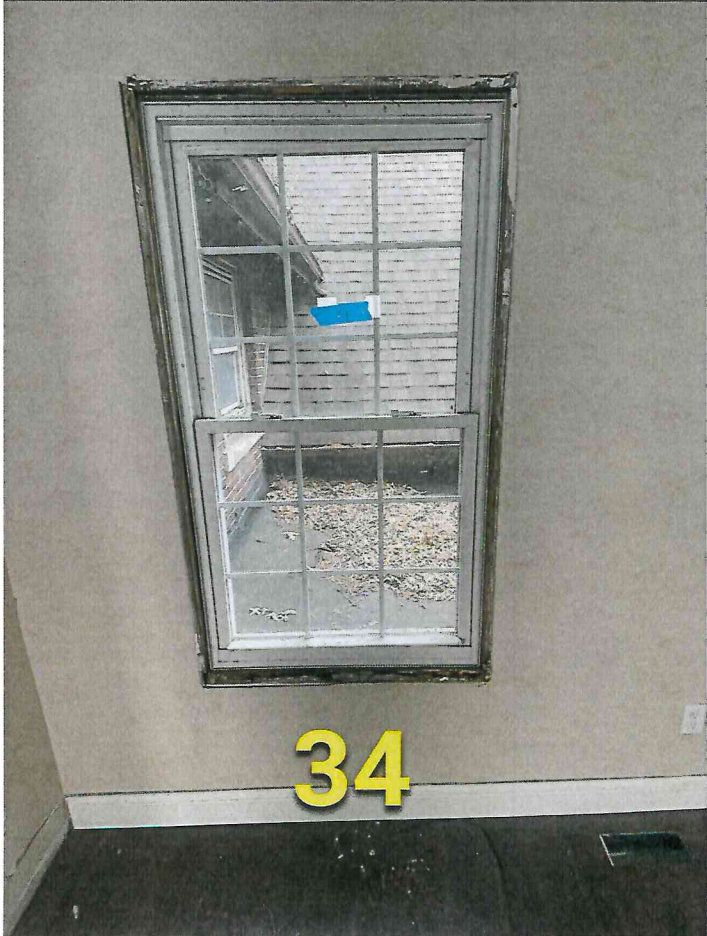
Thu, Jun 15 12:16 pm
by James Halfacer



33

Sicheneder
2432 W Boston Blvd • Detroit, Michigan 48206

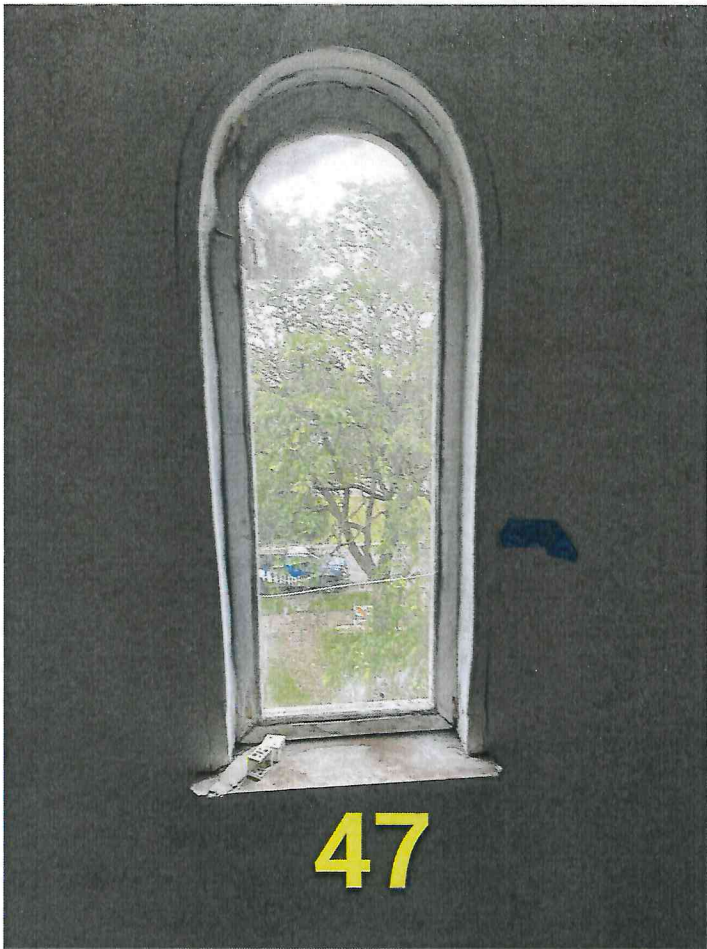
Thu, Jun 15 12:17 pm
by James Halfacer



34

Sicheneder
2432 W Boston Blvd • Detroit, Michigan 48206

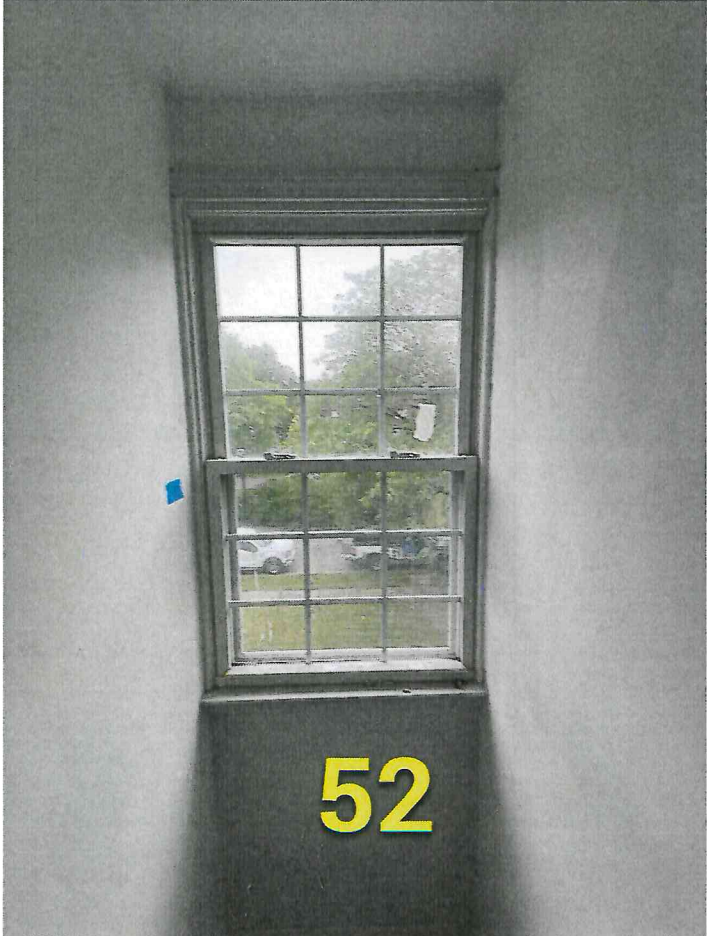
Thu, Jun 15 12:17 pm
by James Halfacer



47

Sicheneder
2432 W Boston Blvd • Detroit, Michigan 48206

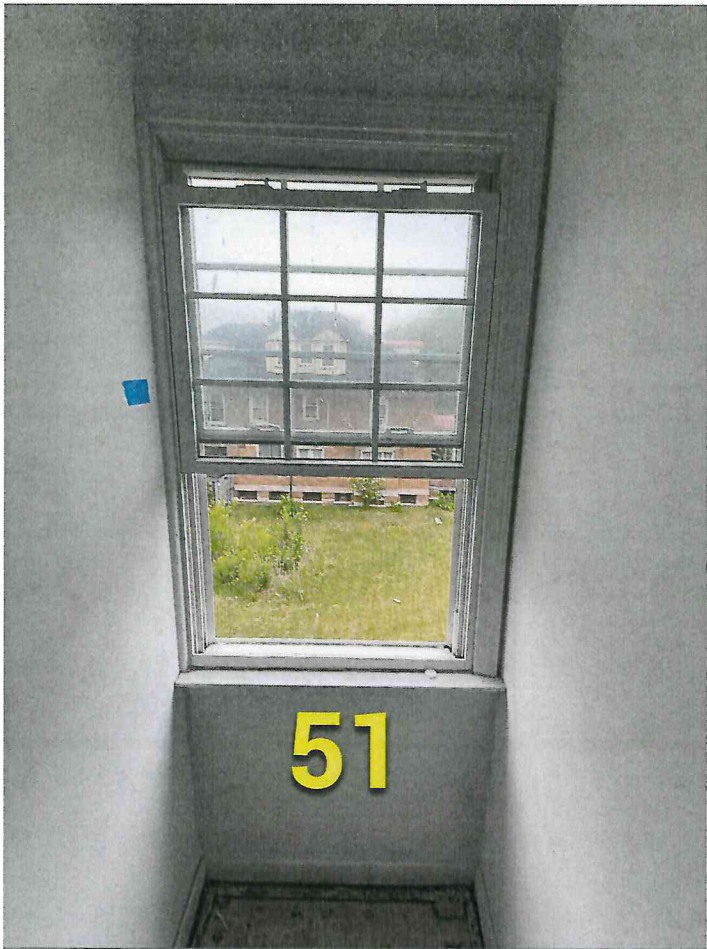
Thu, Jun 15 12:23 pm
by James Halfacer



52

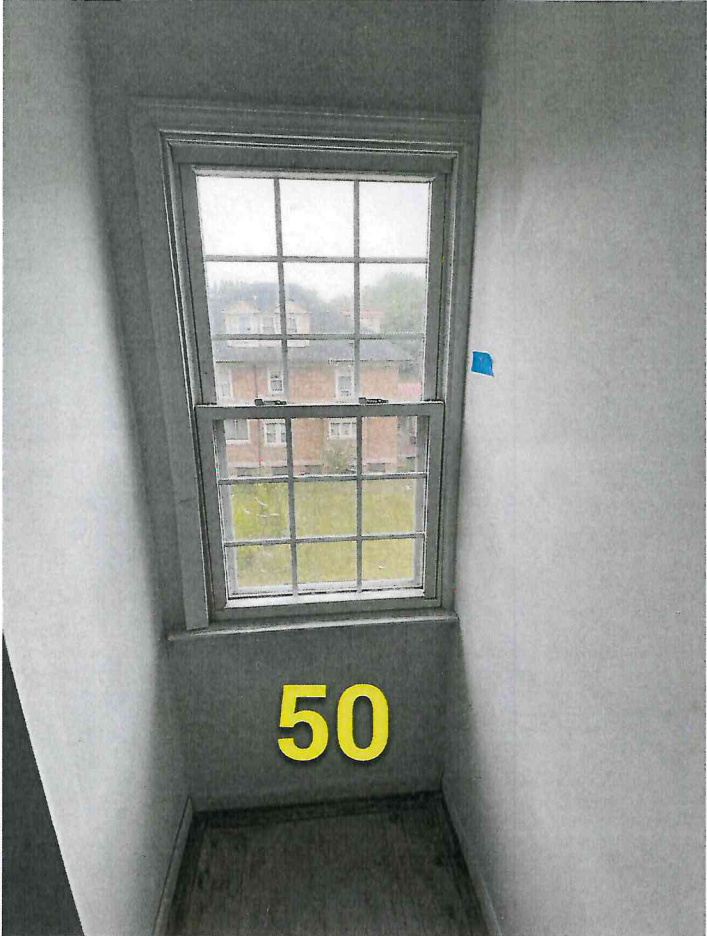
Sicheneder
2432 W Boston Blvd • Detroit, Michigan 48206

Thu, Jun 15 12:24 pm
by James Halfacer



Sicheneder
2432 W Boston Blvd • Detroit, Michigan 48206

Thu, Jun 15 12:27 pm
by James Halfacer



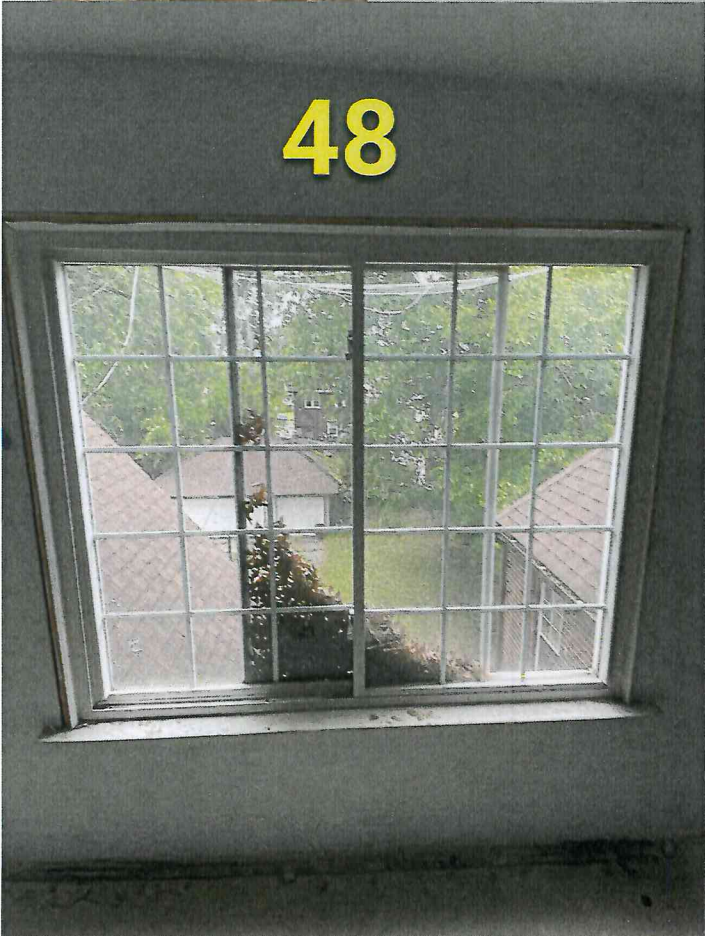
Sicheneder
2432 W Boston Blvd • Detroit, Michigan 48206

Thu, Jun 15 12:29 pm
by James Halfacer



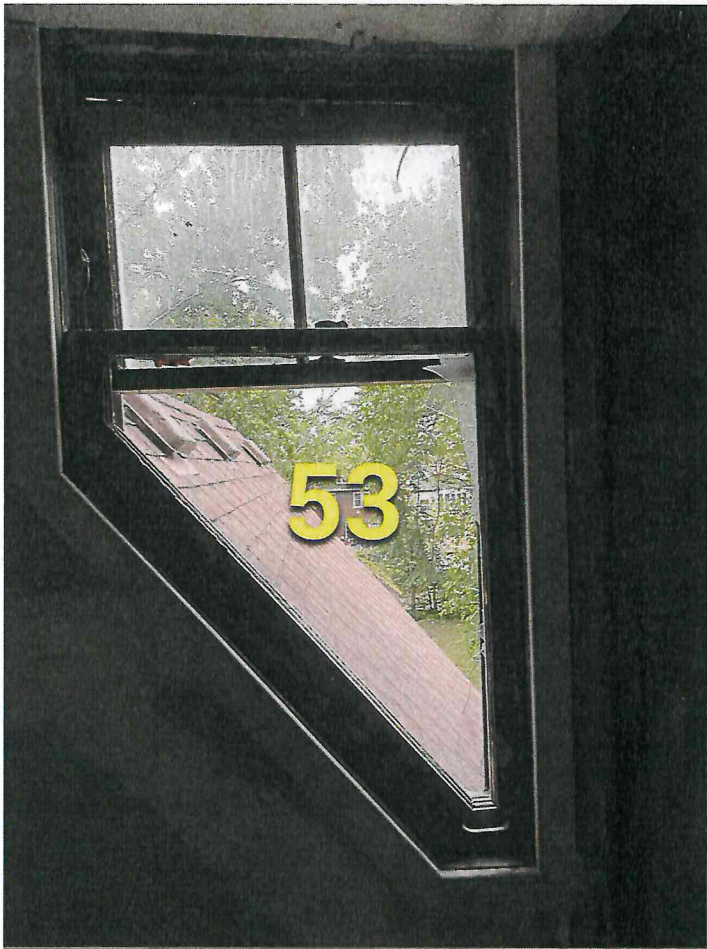
Sicheneder
2432 W Boston Blvd • Detroit, Michigan 48206

Thu, Jun 15 12:31 pm
by James Halfacer



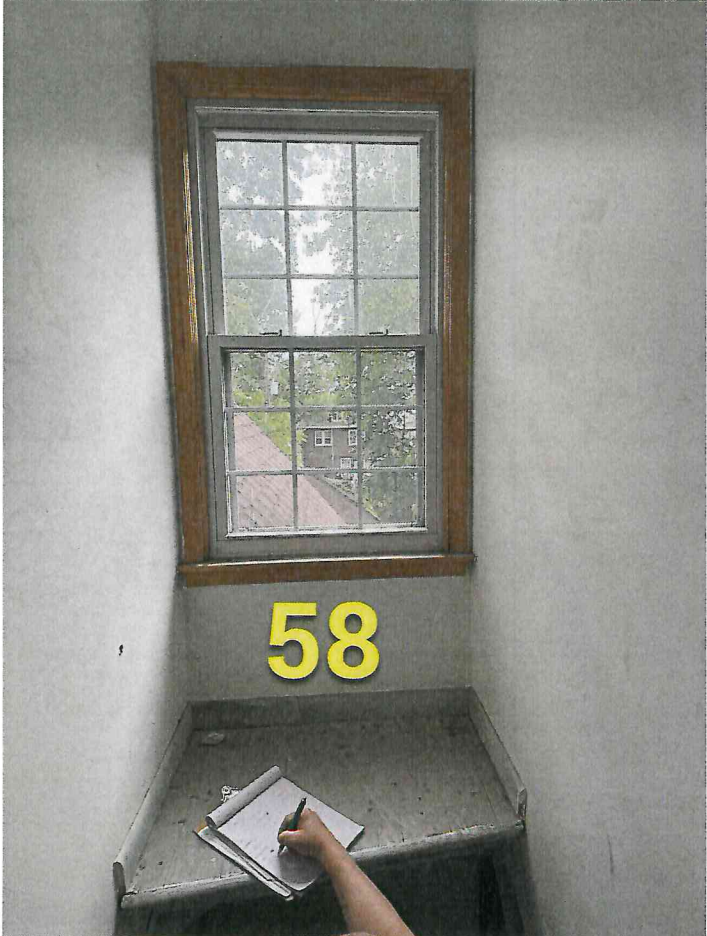
Sicheneder
2432 W Boston Blvd • Detroit, Michigan 48206

Thu, Jun 15 12:32 pm
by James Halfacer



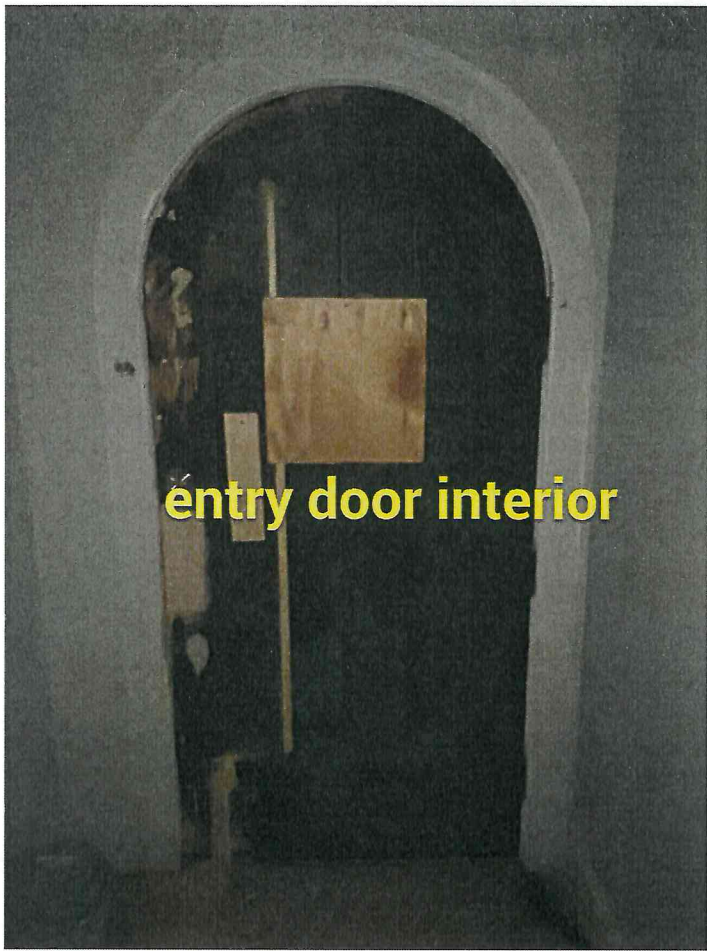
Sicheneder
2432 W Boston Blvd • Detroit, Michigan 48206

Thu, Jun 15 12:35 pm
by James Halfacer



Sicheneder
2432 W Boston Blvd • Detroit, Michigan 48206

Thu, Jun 15 12:41 pm
by James Halfacer



entry door interior

Sicheneder
2432 W Boston Blvd • Detroit, Michigan 48206

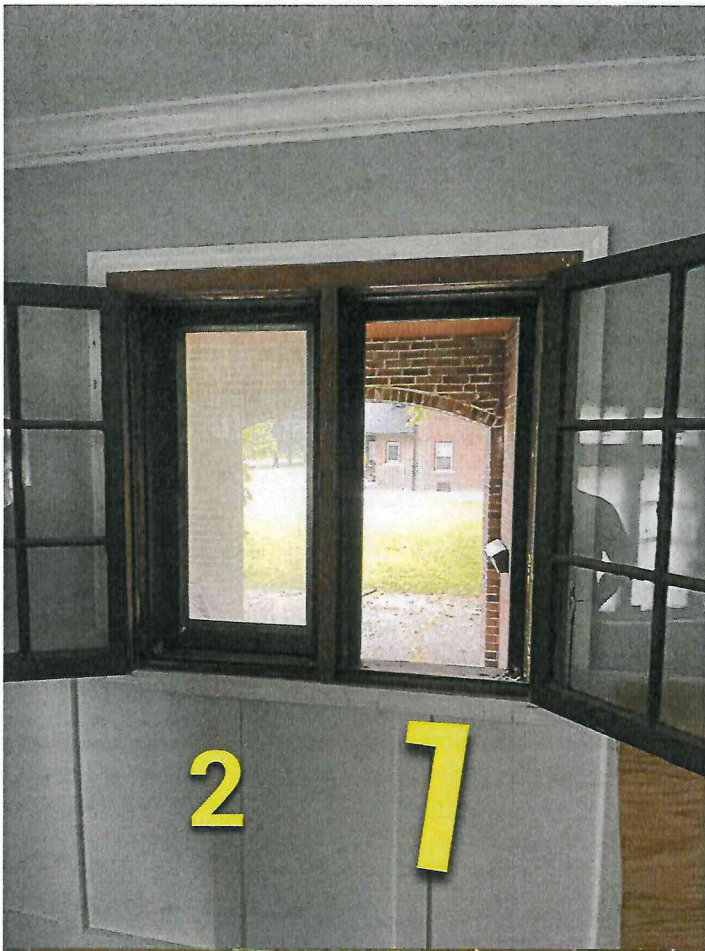
Thu, Jun 15 12:46 pm
by James Halfacer



entry door interior

Sicheneder
2432 W Boston Blvd • Detroit,
Michigan 48206

Thu, Jun 15 12:46 pm
by James Halfacer



Sicheneder
2432 W Boston Blvd • Detroit, Michigan 48206

Thu, Jun 15 12:50 pm
by James Halfacer



Sicheneder
2432 W Boston Blvd • Detroit, Michigan 48206

Thu, Jun 15 12:52 pm
by James Halfacer



Sicheneder
2432 W Boston Blvd • Detroit, Michigan 48206

Thu, Jun 15 01:02 pm
by James Halfacer



Sicheneder
2432 W Boston Blvd • Detroit, Michigan 48206

Thu, Jun 15 01:02 pm
by James Halfacer



Contract - Detailed

Phone: Fax:

Sales Rep Name: Smith, Troy
 Sales Rep Phone: 248-464-3184
 Sales Rep Fax:
 Sales Rep E-Mail: SmithTJ1@pella.com

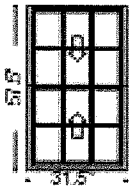
Customer Information	Project/Delivery Address	Order Information
McCarter Construction 475 Washington St SOUTH LYON, MI 48178-1321 Primary Phone: (248) 446-1750 Mobile Phone: Fax Number: (248) 4461830 E-Mail: Contact Name: Great Plains #: 1000375471 Customer Number: 1002537941 Customer Account: 1000375471	JOE M 475 Washington St Lot # SOUTH LYON, MI 48178-1321 County: Owner Name: Owner Phone:	Quote Name: JW LS BROWN/WHITE Order Number: 189 Quote Number: 16817166 Order Type: Non-Installed Sales Wall Depth: Payment Terms: Net 30 Days Tax Code: MISALESTAX Cust Delivery Date: None Quoted Date: 5/9/2023 Contracted Date: Booked Date: Customer PO #:

Line #	Location:	Attributes	Item Price	Qty	Ext'd Price
--------	-----------	------------	------------	-----	-------------

10 40/41/36/37

Lifestyle, Double Hung, 31.5 X 57.5, Without HGP, Brown

\$821.26 4 \$3,285.04



PK #
2138

Viewed From Exterior

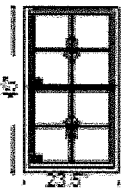
1: 31.557.5 Double Hung, Equal
Frame Size: 31 1/2 X 57 1/2
Unit Type: No Program
General Information: No Package, Without Hinged Glass Panel, Clad, Pine, 5", 3 11/16", Jambliner Color: **Gray**
Exterior Color / Finish: **Standard Enduraclad, Brown**
Interior Color / Finish: **Prefinished White Paint Interior**
Glass: **Insulated Low-E Advanced Low-E Insulating Glass Argon Non High Altitude**
Hardware Options: **Cam-Action Lock, White, No Limited Opening Hardware, Order Sash Lift, No Integrated Sensor**
Screen: **Full Screen, Brown, InView™**
Performance Information: **U-Factor 0.30, SHGC 0.27, VLT 0.50, CPD PEL-N-35-00426-00002, Performance Class LC, PG 40, Calculated Positive DP Rating 40, Calculated Negative DP Rating 40, Year Rated 08|11, Clear Opening Width 28.312, Clear Opening Height 25.5, Clear Opening Area 5.013583, Egress Meets Typical for ground floor 5.0 sqft (E1) (United States Only)**
Grille: **GBG, No Custom Grille, 3/4" Contour, Traditional (3W2H / 3W2H), White, Brown**
Wrapping Information: **Foldout Fins, Factory Applied, No Exterior Trim, 6 9/16", 7 7/8", Standard Four Sided Jamb Extension, Factory Applied, Pella Recommended Clearance, Perimeter Length = 178".**

Rough Opening: 32 - 1/4" X 58 - 1/4"

For more information regarding the finishing, maintenance, service and warranty of all Pella® products, visit the Pella® website at www.pella.com

Line #	Location:	Attributes
--------	-----------	------------

15 44



Viewed From Exterior

PK #
2139

Lifestyle, Double Hung, 23.5 X 45, Without HGP, Brown

Item Price	Qty	Ext'd Price
\$855.81	1	\$855.81

1: 23.545 Double Hung, Equal

Frame Size: 23 1/2 X 45

Unit Type: No Program

General Information: No Package, Without Hinged Glass Panel, Clad, Pine, 5", 3 11/16", Jambliner Color: Gray

Exterior Color / Finish: Standard Enduraclad, Brown

Interior Color / Finish: Prefinished White Paint Interior

Glass: Insulated Tempered Low-E Advanced Low-E Insulating Glass Argon Non High Altitude

Hardware Options: Cam-Action Lock, White, No Limited Opening Hardware, Order Sash Lift, No Integrated Sensor

Screen: Full Screen, Brown, InView™

Performance Information: U-Factor 0.30, SHGC 0.27, VLT 0.50, CPD PEL-N-35-00427-00002, Performance Class LC, PG 50, Calculated Positive DP Rating 50, Calculated Negative DP Rating 50, Year Rated 08|11, Clear Opening Width 20.312, Clear Opening Height 19.25, Clear Opening Area 2.715319, Egress Does not meet typical United States egress, but may comply with local code requirements

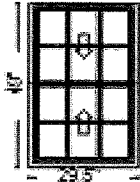
Grille: GBG, No Custom Grille, 3/4" Contour, Traditional (2W2H / 2W2H), White, Brown

Wrapping Information: Foldout Fins, Factory Applied, No Exterior Trim, 6 9/16", 7 7/8", Standard Four Sided Jamb Extension, Factory Applied, Pella Recommended Clearance, Perimeter Length = 137".

Rough Opening: 24 - 1/4" X 45 - 3/4"

Line #	Location:	Attributes
--------	-----------	------------

20 52



Viewed From Exterior

PK #
2138

Lifestyle, Double Hung, 29.5 X 49, Without HGP, Brown

Item Price	Qty	Ext'd Price
\$859.13	1	\$859.13

1: 29.549 Double Hung, Equal

Frame Size: 29 1/2 X 49

Unit Type: No Program

General Information: No Package, Without Hinged Glass Panel, Clad, Pine, 5", 3 11/16", Jambliner Color: Gray

Exterior Color / Finish: Standard Enduraclad, Brown

Interior Color / Finish: Prefinished White Paint Interior

Glass: Insulated Low-E Advanced Low-E Insulating Glass Argon Non High Altitude

Hardware Options: Cam-Action Lock, White, No Limited Opening Hardware, Order Sash Lift, No Integrated Sensor

Screen: Full Screen, Brown, InView™

Performance Information: U-Factor 0.30, SHGC 0.27, VLT 0.50, CPD PEL-N-35-00426-00002, Performance Class LC, PG 40, Calculated Positive DP Rating 40, Calculated Negative DP Rating 40, Year Rated 08|11, Clear Opening Width 26.312, Clear Opening Height 21.25, Clear Opening Area 3.882847, Egress Does not meet typical United States egress, but may comply with local code requirements

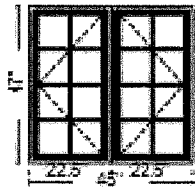
Grille: GBG, No Custom Grille, 3/4" Contour, Traditional (3W2H / 3W2H), White, Brown

Wrapping Information: Foldout Fins, Factory Applied, No Exterior Trim, 6 9/16", 7 7/8", Standard Four Sided Jamb Extension, Factory Applied, Pella Recommended Clearance, Perimeter Length = 157".

Rough Opening: 30 - 1/4" X 49 - 3/4"

Line #	Location:	Attributes
--------	-----------	------------

25 1/2



Viewed From Exterior

PK #
2138

Lifestyle, 2-Wide Casement, 45 X 47, Without HGP, Brown

Item Price	Qty	Ext'd Price
\$1,692.69	1	\$1,692.69

1: 22.547 Left Casement

Frame Size: 22 1/2 X 47

Unit Type: No Program

General Information: No Package, Without Hinged Glass Panel, Clad, Pine, 5", 3 11/16"

Exterior Color / Finish: Standard Enduraclad, Brown

Interior Color / Finish: Prefinished White Paint Interior

Glass: Insulated Low-E Advanced Low-E Insulating Glass Argon Non High Altitude

Hardware Options: Wash Hinge Hardware, Fold-Away Crank, White, No Window Opening Control Device, No Limited Opening Hardware, No Integrated Sensor

Screen: Full Screen, White, InView™

Performance Information: U-Factor 0.29, SHGC 0.25, VLT 0.47, CPD PEL-N-14-00678-00001, Performance Class LC, PG 50, Calculated Positive DP Rating 50, Calculated Negative DP Rating 50, Year Rated 08|11, Clear Opening Width 12.75, Clear Opening Height 42.875, Clear Opening Area 3.796224, Egress Does not meet typical United States egress, but may comply with local code requirements

Grille: GBG, No Custom Grille, 3/4" Contour, Traditional (2W4H), White, Brown

Vertical Mull 1: FactoryMull, Standard Joining Mullion, Mull Design Pressure- 20, Overall Thru Direction- Vertical

2: 22.547 Right Casement

Frame Size: 22 1/2 X 47

Unit Type: No Program

General Information: No Package, Without Hinged Glass Panel, Clad, Pine, 5", 3 11/16"

Exterior Color / Finish: Standard Enduraclad, Brown

Interior Color / Finish: Prefinished White Paint Interior

Glass: Insulated Low-E Advanced Low-E Insulating Glass Argon Non High Altitude

Hardware Options: Wash Hinge Hardware, Fold-Away Crank, White, No Window Opening Control Device, No Limited Opening Hardware, No Integrated Sensor

Screen: Full Screen, White, InView™

Performance Information: U-Factor 0.29, SHGC 0.25, VLT 0.47, CPD PEL-N-14-00678-00001, Performance Class LC, PG 50, Calculated Positive DP Rating 50, Calculated Negative DP Rating 50, Year Rated 08|11, Clear Opening Width 12.75, Clear Opening Height 42.875, Clear Opening Area 3.796224, Egress Does not meet typical United States egress, but may comply with local code requirements

Grille: GBG, No Custom Grille, 3/4" Contour, Traditional (2W4H), White, Brown

Wrapping Information: Foldout Fins, Factory Applied, No Exterior Trim, 6 9/16", 7 7/8", Standard Four Sided Jamb Extension, Factory Applied, Pella Recommended Clearance, Perimeter Length = 184".

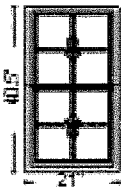
Rough Opening: 45 - 3/4" X 47 - 3/4"

Line #	Location:	Attributes
--------	-----------	------------

30 55/56

Lifestyle, Double Hung, 21 X 40.5, Without HGP, Brown

Item Price	Qty	Ext'd Price
\$685.68	2	\$1,371.36



PK #
2138

Viewed From Exterior

1: 2140.5 Double Hung, Equal
Frame Size: 21 X 40 1/2
Unit Type: No Program
General Information: No Package, Without Hinged Glass Panel, Clad, Pine, 5", 3 11/16", Jambliner Color: **Gray**
Exterior Color / Finish: **Standard Enduraclad, Brown**
Interior Color / Finish: **Prefinished White Paint Interior**
Glass: **Insulated Low-E Advanced Low-E Insulating Glass Argon Non High Altitude**
Hardware Options: **Cam-Action Lock, White, No Limited Opening Hardware, Order Sash Lift, No Integrated Sensor**
Screen: **Full Screen, Brown, InView™**
Performance Information: **U-Factor 0.30, SHGC 0.27, VLT 0.50, CPD PEL-N-35-00426-00002, Performance Class LC, PG 50, Calculated Positive DP Rating 50, Calculated Negative DP Rating 50, Year Rated 08|11, Clear Opening Width 17.812, Clear Opening Height 17, Clear Opening Area 2.102806, Egress Does not meet typical United States egress, but may comply with local code requirements**
Grille: **GBG, No Custom Grille, 3/4" Contour, Traditional (2W2H / 2W2H), White, Brown**
Wrapping Information: **Foldout Fins, Factory Applied, No Exterior Trim, 6 9/16", 7 7/8", Standard Four Sided Jamb Extension, Factory Applied, Pella Recommended Clearance, Perimeter Length = 123".**

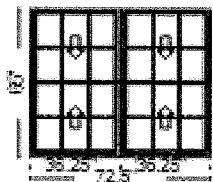
Rough Opening: 21 - 3/4" X 41 - 1/4"

Line #	Location:	Attributes
--------	-----------	------------

35 8/9

Lifestyle, 2-Wide Double Hung, 72.5 X 65, Without HGP, Brown

Item Price	Qty	Ext'd Price
\$2,166.52	1	\$2,166.52



PK#
2138

Viewed From Exterior

1: 36.2565 Double Hung, Equal
Frame Size: 36 1/4 X 65
Unit Type: No Program
General Information: No Package, Without Hinged Glass Panel, Clad, Pine, 5", 3 11/16", Jambliner Color: **Gray**
Exterior Color / Finish: Standard Enduraclad, **Brown**
Interior Color / Finish: **Prefinished White Paint Interior**
Glass: **Insulated Low-E Advanced Low-E Insulating Glass Argon Non High Altitude**
Hardware Options: **Cam-Action Lock, White, No Limited Opening Hardware, Order Sash Lift, No Integrated Sensor**
Screen: **Full Screen, Brown, InView™**
Performance Information: **U-Factor 0.30, SHGC 0.27, VLT 0.50, CPD PEL-N-35-00426-00002, Performance Class LC, PG 35, Calculated Positive DP Rating 35, Calculated Negative DP Rating 35, Year Rated 08|11, Clear Opening Width 33.062, Clear Opening Height 29.25, Clear Opening Area 6.715719, Egress Meets Typical 5.7 sqft (E) (United States Only)**
Grille: **GBG, No Custom Grille, 3/4" Contour, Traditional (3W2H / 3W2H), White, Brown**
Vertical Mull 1: **FactoryMull, Standard Joining Mullion, Mull Design Pressure- 20, Overall Thru Direction- Vertical**

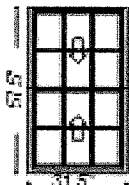
2: 36.2565 Double Hung, Equal
Frame Size: 36 1/4 X 65
Unit Type: **No Program**
General Information: **No Package, Without Hinged Glass Panel, Clad, Pine, 5", 3 11/16", Jambliner Color:** Gray
Exterior Color / Finish: Standard Enduraclad, **Brown**
Interior Color / Finish: **Prefinished White Paint Interior**
Glass: **Insulated Low-E Advanced Low-E Insulating Glass Argon Non High Altitude**
Hardware Options: **Cam-Action Lock, White, No Limited Opening Hardware, Order Sash Lift, No Integrated Sensor**
Screen: **Full Screen, Brown, InView™**
Performance Information: **U-Factor 0.30, SHGC 0.27, VLT 0.50, CPD PEL-N-35-00426-00002, Performance Class LC, PG 35, Calculated Positive DP Rating 35, Calculated Negative DP Rating 35, Year Rated 08|11, Clear Opening Width 33.062, Clear Opening Height 29.25, Clear Opening Area 6.715719, Egress Meets Typical 5.7 sqft (E) (United States Only)**
Grille: **GBG, No Custom Grille, 3/4" Contour, Traditional (3W2H / 3W2H), White, Brown**
Wrapping Information: **Foldout Fins, Factory Applied, No Exterior Trim, 6 9/16", 7 7/8", Standard Four Sided Jamb Extension, Factory Applied, Pella Recommended Clearance, Perimeter Length = 275".**

Rough Opening: 73 - 1/4" X 65 - 3/4"

Customer Notes: 72.5 due to .25 per unit

Line #	Location:	Attributes
--------	-----------	------------

40 29/30



Viewed From Exterior

PK #
2138

Lifestyle, Double Hung, 31.5 X 57.5, Without HGP, Brown

Item Price	Qty	Ext'd Price
\$821.26	2	\$1,642.52

1: 31.557.5 Double Hung, Equal
Frame Size: 31 1/2 X 57 1/2
Unit Type: No Program
General Information: No Package, Without Hinged Glass Panel, Clad, Pine, 5", 3 11/16", Jambliner Color: **Gray**
Exterior Color / Finish: **Standard Enduraclad, Brown**
Interior Color / Finish: **Prefinished White Paint Interior**
Glass: **Insulated Low-E Advanced Low-E Insulating Glass Argon Non High Altitude**
Hardware Options: **Cam-Action Lock, White, No Limited Opening Hardware, Order Sash Lift, No Integrated Sensor**
Screen: **Full Screen, Brown, InView™**
Performance Information: **U-Factor 0.30, SHGC 0.27, VLT 0.50, CPD PEL-N-35-00426-00002, Performance Class LC, PG 40, Calculated Positive DP Rating 40, Calculated Negative DP Rating 40, Year Rated 08|11, Clear Opening Width 28.312, Clear Opening Height 25.5, Clear Opening Area 5.013583, Egress Meets Typical for ground floor 5.0 sqft (E1) (United States Only)**
Grille: **GBG, No Custom Grille, 3/4" Contour, Traditional (3W2H / 3W2H), White, Brown**
Wrapping Information: **Foldout Fins, Factory Applied, No Exterior Trim, 6 9/16", 7 7/8", Standard Four Sided Jamb Extension, Factory Applied, Pella Recommended Clearance, Perimeter Length = 178".**

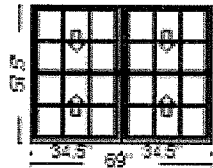
Rough Opening: 32 - 1/4" X 58 - 1/4"

Line #	Location:	Attributes
--------	-----------	------------

41 27/28

Lifestyle, 2-Wide Double Hung, 69 X 57.5, Without HGP, Brown

Item Price	Qty	Ext'd Price
\$2,025.97	1	\$2,025.97



PK #
2138

Viewed From Exterior

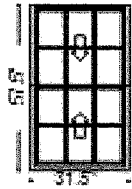
1: 34.557.5 Double Hung, Equal
Frame Size: 34 1/2 X 57 1/2
Unit Type: No Program
General Information: No Package, Without Hinged Glass Panel, Clad, Pine, 5", 3 11/16", Jambliner Color: **Gray**
Exterior Color / Finish: Standard Enduraclad, Brown
Interior Color / Finish: Prefinished White Paint Interior
Glass: Insulated Low-E Advanced Low-E Insulating Glass Argon Non High Altitude
Hardware Options: Cam-Action Lock, White, No Limited Opening Hardware, Order Sash Lift, No Integrated Sensor
Screen: Full Screen, Brown, InView™
Performance Information: U-Factor 0.30, SHGC 0.27, VLT 0.50, CPD PEL-N-35-00426-00002, Performance Class LC, PG 35, Calculated Positive DP Rating 35, Calculated Negative DP Rating 35, Year Rated 08|11, Clear Opening Width 31.312, Clear Opening Height 25.5, Clear Opening Area 5.544833, Egress Meets Typical for ground floor 5.0 sqft (E1) (United States Only)
Grille: GBG, No Custom Grille, 3/4" Contour, Traditional (3W2H / 3W2H), White, Brown
Vertical Mull 1: FactoryMull, Standard Joining Mullion, Mull Design Pressure- 20, Overall Thru Direction- Vertical

2: 34.557.5 Double Hung, Equal
Frame Size: 34 1/2 X 57 1/2
Unit Type: No Program
General Information: No Package, Without Hinged Glass Panel, Clad, Pine, 5", 3 11/16", Jambliner Color: Gray
Exterior Color / Finish: Standard Enduraclad, Brown
Interior Color / Finish: Prefinished White Paint Interior
Glass: Insulated Low-E Advanced Low-E Insulating Glass Argon Non High Altitude
Hardware Options: Cam-Action Lock, White, No Limited Opening Hardware, Order Sash Lift, No Integrated Sensor
Screen: Full Screen, Brown, InView™
Performance Information: U-Factor 0.30, SHGC 0.27, VLT 0.50, CPD PEL-N-35-00426-00002, Performance Class LC, PG 35, Calculated Positive DP Rating 35, Calculated Negative DP Rating 35, Year Rated 08|11, Clear Opening Width 31.312, Clear Opening Height 25.5, Clear Opening Area 5.544833, Egress Meets Typical for ground floor 5.0 sqft (E1) (United States Only)
Grille: GBG, No Custom Grille, 3/4" Contour, Traditional (3W2H / 3W2H), White, Brown
Wrapping Information: Foldout Fins, Factory Applied, No Exterior Trim, 6 9/16", 7 7/8", Standard Four Sided Jamb Extension, Factory Applied, Pella Recommended Clearance, Perimeter Length = 253".

Rough Opening: 69 - 3/4" X 58 - 1/4"

Line #	Location:	Attributes		
--------	-----------	------------	--	--

45 38/39



Viewed From Exterior

PK #
2138

Lifestyle, Double Hung, 31.5 X 57.5, Without HGP, Brown

Item Price	Qty	Ext'd Price
\$821.26	2	\$1,642.52

1: 31.557.5 Double Hung, Equal

Frame Size: 31 1/2 X 57 1/2

Unit Type: No Program

General Information: No Package, Without Hinged Glass Panel, Clad, Pine, 5", 3 11/16", Jambliner Color: Gray

Exterior Color / Finish: Standard Enduraclad, Brown

Interior Color / Finish: Prefinished White Paint Interior

Glass: Insulated Low-E Advanced Low-E Insulating Glass Argon Non High Altitude

Hardware Options: Cam-Action Lock, White, No Limited Opening Hardware, Order Sash Lift, No Integrated Sensor

Screen: Full Screen, Brown, InView™

Performance Information: U-Factor 0.30, SHGC 0.27, VLT 0.50, CPD PEL-N-35-00426-00002, Performance Class LC, PG 40, Calculated Positive DP Rating 40, Calculated Negative DP Rating 40, Year Rated 08|11, Clear Opening Width 28.312, Clear Opening Height 25.5, Clear Opening Area 5.013583, Egress Meets Typical for ground floor 5.0 sqft (E1) (United States Only)

Grille: GBG, No Custom Grille, 3/4" Contour, Traditional (3W2H / 3W2H), White, Brown

Wrapping Information: Foldout Fins, Factory Applied, No Exterior Trim, 6 9/16", 7 7/8", Standard Four Sided Jamb Extension, Factory Applied, Pella Recommended Clearance, Perimeter Length = 178".

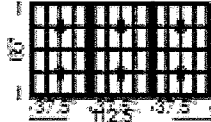
Rough Opening: 32 - 1/4" X 58 - 1/4"

Line #	Location:	Attributes	Item Price	Qty	Ext'd Price
--------	-----------	------------	------------	-----	-------------

50 10/11/12

Lifestyle, 3-Wide Double Hung, 112.5 X 65, Without HGP, Brown

\$3,416.41 1 \$3,416.41



PK #
2138

Viewed From Exterior

1: 37.565 Double Hung, Equal
Frame Size: 37 1/2 X 65
Unit Type: No Program
General Information: No Package, Without Hinged Glass Panel, Clad, Pine, 5", 3 11/16", Jambliner Color: **Gray**
Exterior Color / Finish: Standard Enduraclad, **Brown**
Interior Color / Finish: Prefinished White Paint Interior
Glass: Insulated Low-E Advanced Low-E Insulating Glass Argon Non High Altitude
Hardware Options: Cam-Action Lock, White, No Limited Opening Hardware, Order Sash Lift, No Integrated Sensor
Screen: Full Screen, Brown, InView™
Performance Information: U-Factor 0.30, SHGC 0.27, VLT 0.50, CPD PEL-N-35-00426-00002, Performance Class LC, PG 30, Calculated Positive DP Rating 30, Calculated Negative DP Rating 30, Year Rated 08|11, Clear Opening Width 34.312, Clear Opening Height 29.25, Clear Opening Area 6.969625, Egress Meets Typical 5.7 sqft (E) (United States Only)
Grille: GBG, No Custom Grille, 3/4" Contour, Traditional (4W2H / 4W2H), White, Brown
Vertical Mull 1: FactoryMull, Standard Joining Mullion, Mull Design Pressure- 20, Overall Thru Direction- Vertical

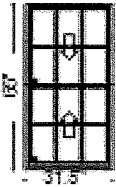
2: 37.565 Double Hung, Equal
Frame Size: 37 1/2 X 65
Unit Type: No Program
General Information: No Package, Without Hinged Glass Panel, Clad, Pine, 5", 3 11/16", Jambliner Color: Gray
Exterior Color / Finish: Standard Enduraclad, Brown
Interior Color / Finish: Prefinished White Paint Interior
Glass: Insulated Low-E Advanced Low-E Insulating Glass Argon Non High Altitude
Hardware Options: Cam-Action Lock, White, No Limited Opening Hardware, Order Sash Lift, No Integrated Sensor
Screen: Full Screen, Brown, InView™
Performance Information: U-Factor 0.30, SHGC 0.27, VLT 0.50, CPD PEL-N-35-00426-00002, Performance Class LC, PG 30, Calculated Positive DP Rating 30, Calculated Negative DP Rating 30, Year Rated 08|11, Clear Opening Width 34.312, Clear Opening Height 29.25, Clear Opening Area 6.969625, Egress Meets Typical 5.7 sqft (E) (United States Only)
Grille: GBG, No Custom Grille, 3/4" Contour, Traditional (4W2H / 4W2H), White, Brown
Vertical Mull 2: FactoryMull, Standard Joining Mullion, Mull Design Pressure- 20, Overall Thru Direction- Vertical

3: 37.565 Double Hung, Equal
Frame Size: 37 1/2 X 65
Unit Type: No Program
General Information: No Package, Without Hinged Glass Panel, Clad, Pine, 5", 3 11/16", Jambliner Color: **Gray**
Exterior Color / Finish: Standard Enduraclad, **Brown**
Interior Color / Finish: Prefinished White Paint Interior
Glass: Insulated Low-E Advanced Low-E Insulating Glass Argon Non High Altitude
Hardware Options: Cam-Action Lock, White, No Limited Opening Hardware, Order Sash Lift, No Integrated Sensor
Screen: Full Screen, Brown, InView™
Performance Information: U-Factor 0.30, SHGC 0.27, VLT 0.50, CPD PEL-N-35-00426-00002, Performance Class LC, PG 30, Calculated Positive DP Rating 30, Calculated Negative DP Rating 30, Year Rated 08|11, Clear Opening Width 34.312, Clear Opening Height 29.25, Clear Opening Area 6.969625, Egress Meets Typical 5.7 sqft (E) (United States Only)
Grille: GBG, No Custom Grille, 3/4" Contour, Traditional (4W2H / 4W2H), White, Brown
Wrapping Information: Foldout Fins, Factory Applied, No Exterior Trim, 6 9/16", 7 7/8", Standard Four Sided Jamb Extension, Factory Applied, Pella Recommended Clearance, Perimeter Length = 355".

Rough Opening: 113 - 1/4" X 65 - 3/4

Line #	Location:	Attributes		
--------	-----------	------------	--	--

55	13/14	Lifestyle, Double Hung, 31.5 X 65, Without HGP, Brown	<u>Item Price</u>	<u>Qty</u>	<u>Ext'd Price</u>
			\$1,162.00	2	\$2,324.00



PK #
2138

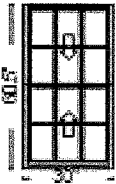
Viewed From Exterior

1: 31.565 Double Hung, Equal
Frame Size: 31 1/2 X 65
Unit Type: No Program
General Information: No Package, Without Hinged Glass Panel, Clad, Pine, 5", 3 11/16", Jambliner Color: **Gray**
Exterior Color / Finish: **Standard Enduraclad, Brown**
Interior Color / Finish: **Prefinished White Paint Interior**
Glass: **Insulated Tempered Low-E Advanced Low-E Insulating Glass Argon Non High Altitude**
Hardware Options: **Cam-Action Lock, White, No Limited Opening Hardware, Order Sash Lift, No Integrated Sensor**
Screen: **Full Screen, Brown, InView™**
Performance Information: **U-Factor 0.30, SHGC 0.27, VLT 0.50, CPD PEL-N-35-00427-00002, Performance Class LC, PG 35, Calculated Positive DP Rating 35, Calculated Negative DP Rating 35, Year Rated 08|11, Clear Opening Width 28.312, Clear Opening Height 29.25, Clear Opening Area 5.750875, Egress Meets Typical 5.7 sqft (E) (United States Only)**
Grille: **GBG, No Custom Grille, 3/4" Contour, Traditional (3W2H / 3W2H), White, Brown**
Wrapping Information: **Foldout Fins, Factory Applied, No Exterior Trim, 6 9/16", 7 7/8", Standard Four Sided Jamb Extension, Factory Applied, Pella Recommended Clearance, Perimeter Length = 193".**

Rough Opening: 32 - 1/4" X 65 - 3/4"

Line #	Location:	Attributes		
--------	-----------	------------	--	--

60	21	Lifestyle, Double Hung, 30 X 60.5, Without HGP, Brown	<u>Item Price</u>	<u>Qty</u>	<u>Ext'd Price</u>
			\$952.83	1	\$952.83



PK #
2138

Viewed From Exterior

1: 3060.5 Double Hung, Equal
Frame Size: 30 X 60 1/2
Unit Type: No Program
General Information: No Package, Without Hinged Glass Panel, Clad, Pine, 5", 3 11/16", Jambliner Color: **Gray**
Exterior Color / Finish: **Standard Enduraclad, Brown**
Interior Color / Finish: **Prefinished White Paint Interior**
Glass: **Insulated Low-E Advanced Low-E Insulating Glass Argon Non High Altitude**
Hardware Options: **Cam-Action Lock, White, No Limited Opening Hardware, Order Sash Lift, No Integrated Sensor**
Screen: **Full Screen, Brown, InView™**
Performance Information: **U-Factor 0.30, SHGC 0.27, VLT 0.50, CPD PEL-N-35-00426-00002, Performance Class LC, PG 35, Calculated Positive DP Rating 35, Calculated Negative DP Rating 35, Year Rated 08|11, Clear Opening Width 26.812, Clear Opening Height 27, Clear Opening Area 5.02725, Egress Meets Typical for ground floor 5.0 sqft (E1) (United States Only)**
Grille: **GBG, No Custom Grille, 3/4" Contour, Traditional (3W2H / 3W2H), White, Brown**
Wrapping Information: **Foldout Fins, Factory Applied, No Exterior Trim, 6 9/16", 7 7/8", Standard Four Sided Jamb Extension, Factory Applied, Pella Recommended Clearance, Perimeter Length = 181".**

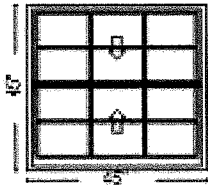
Rough Opening: 30 - 3/4" X 61 - 1/4"

Line #	Location:	Attributes
--------	-----------	------------

65 20

Architect, Traditional, Double Hung, 45 X 45, Brown

Item Price	Qty	Ext'd Price
\$1,250.19	1	\$1,250.19



Viewed From Exterior

PK #
2138

1: Traditional, 4545 Double Hung, Equal
Frame Size: 45 X 45

General Information: Standard, Style, Clad, Pine, 5", 3 11/16"

Exterior Color / Finish: Painted, Standard Enduraclad, Brown

Interior Color / Finish: Prefinished White Paint Interior

Sash / Panel: Ogee, Ogee, Standard, No Sash Lugs

Glass: Insulated Dual Low-E Advanced Low-E Insulating Glass Argon Non High Altitude

Hardware Options: Cam-Action Lock, White, No Window Opening Control Device, No Limited Opening Hardware, Order Sash Lift, No Integrated Sensor

Screen: Full Screen, Standard EnduraClad, Brown, Standard, InView™

Performance Information: U-Factor 0.29, SHGC 0.25, VLT 0.47, CPD PEL-N-232-01142-00001, Performance Class CW, PG 50, Calculated Positive DP Rating 50, Calculated Negative DP Rating 50, Year Rated 08|11, Clear Opening Width 41.625, Clear Opening Height 18.062, Clear Opening Area 5.221047, Egress Does not meet typical United States egress, but may comply with local code requirements

Grille: GBG, No Custom Grille, 3/4" Contour, Traditional (3W2H / 3W2H), White, Brown

Wrapping Information: Foldout Fins, Factory Applied, No Exterior Trim, 6 9/16", 7 7/8", Standard Four Sided Jamb Extension, Factory Applied, Pella Recommended Clearance, Perimeter Length = 180".

Rough Opening: 45 - 3/4" X 45 - 3/4"

Customer Notes: DUE TO THE WIDTH HAD TO QUOTE ARCHITECT.

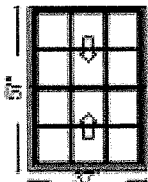
THIS WINDOW WILL LOOK DIFFERENT THEN THE OTHERS

Line #	Location:	Attributes
--------	-----------	------------

70 17/18

Lifestyle, Double Hung, 37 X 57, Without HGP, Brown

Item Price	Qty	Ext'd Price
\$875.96	2	\$1,751.92



Viewed From Exterior

PK #
2138

1: 3757 Double Hung, Equal

Frame Size: 37 X 57

Unit Type: No Program

General Information: No Package, Without Hinged Glass Panel, Clad, Pine, 5", 3 11/16", Jambliner Color: Gray

Exterior Color / Finish: Standard Enduraclad, Brown

Interior Color / Finish: Prefinished White Paint Interior

Glass: Insulated Low-E Advanced Low-E Insulating Glass Argon Non High Altitude

Hardware Options: Cam-Action Lock, White, No Limited Opening Hardware, Order Sash Lift, No Integrated Sensor

Screen: Full Screen, Brown, InView™

Performance Information: U-Factor 0.30, SHGC 0.27, VLT 0.50, CPD PEL-N-35-00426-00002, Performance Class LC, PG 35, Calculated Positive DP Rating 35, Calculated Negative DP Rating 35, Year Rated 08|11, Clear Opening Width 33.812, Clear Opening Height 25.25, Clear Opening Area 5.92884, Egress Meets Typical 5.7 sqft (E) (United States Only)

Grille: GBG, No Custom Grille, 3/4" Contour, Traditional (3W2H / 3W2H), White, Brown

Wrapping Information: Foldout Fins, Factory Applied, No Exterior Trim, 6 9/16", 7 7/8", Standard Four Sided Jamb Extension, Factory Applied, Pella Recommended Clearance, Perimeter Length = 188".

Rough Opening: 37 - 3/4" X 57 - 3/4"

For more information regarding the finishing, maintenance, service and warranty of all Pella® products, visit the Pella® website at www.pella.com

Line #	Location:	Attributes		
--------	-----------	------------	--	--

Line #	Location:		Item Price	Qty	Ext'd Price
75	16/19	Lifestyle, Direct Set, Fixed Frame, 16 X 57, Without HGP, Brown	\$727.15	2	\$1,454.30



Viewed From Exterior

PK #
2138

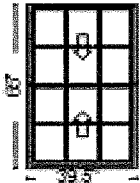
1: 1657 Fixed Frame Direct Set
Frame Size: 16 X 57
General Information: No Package, Without Hinged Glass Panel, Interior Glazed, Standard, Clad, Pine, 5", 3 11/16"
Exterior Color / Finish: Standard Enduraclad, Brown
Interior Color / Finish: Prefinished White Paint Interior
Glass: Insulated Dual Low-E Advanced Low-E Insulating Glass Argon Non High Altitude
Performance Information: U-Factor 0.28, SHGC 0.29, VLT 0.55, CPD PEL-N-18-03366-00001, Performance Class CW, PG 90, Calculated Positive DP Rating 90, Calculated Negative DP Rating 90, Year Rated 08|11
Grille: GBG, No Custom Grille, 3/4" Contour, Traditional (2W4H), White, Brown
Wrapping Information: Foldout Fins, Factory Applied, No Exterior Trim, 6 9/16", 7 7/8", Standard Four Sided Jamb Extension, Factory Applied, Pella Recommended Clearance, Perimeter Length = 146".

Rough Opening: 16 - 3/4" X 57 - 3/4"

Customer Notes: Had to move to direct set for 16W

Line #	Location:	Attributes		
--------	-----------	------------	--	--

Line #	Location:		Item Price	Qty	Ext'd Price
80	15	Lifestyle, Double Hung, 39.5 X 65, Without HGP, Brown	\$1,085.61	1	\$1,085.61



Viewed From Exterior

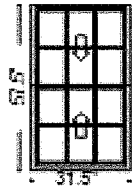
PK #
2138

1: 39.565 Double Hung, Equal
Frame Size: 39 1/2 X 65
Unit Type: No Program
General Information: No Package, Without Hinged Glass Panel, Clad, Pine, 5", 3 11/16", Jambliner Color: **Gray**
Exterior Color / Finish: Standard Enduraclad, Brown
Interior Color / Finish: Prefinished White Paint Interior
Glass: Insulated Low-E Advanced Low-E Insulating Glass Argon Non High Altitude
Hardware Options: Cam-Action Lock, White, No Limited Opening Hardware, Order Sash Lift, No Integrated Sensor
Screen: Full Screen, Brown, InView™
Performance Information: U-Factor 0.30, SHGC 0.27, VLT 0.50, CPD PEL-N-35-00426-00002, Performance Class LC, PG 30, Calculated Positive DP Rating 30, Calculated Negative DP Rating 30, Year Rated 08|11, Clear Opening Width 36.312, Clear Opening Height 29.25, Clear Opening Area 7.375875, Egress Meets Typical 5.7 sqft (E) (United States Only)
Grille: GBG, No Custom Grille, 3/4" Contour, Traditional (3W2H / 3W2H), White, Brown
Wrapping Information: Foldout Fins, Factory Applied, No Exterior Trim, 6 9/16", 7 7/8", Standard Four Sided Jamb Extension, Factory Applied, Pella Recommended Clearance, Perimeter Length = 209".

Rough Opening: 40 - 1/4" X 65 - 3/4"

Line #	Location:	Attributes		
--------	-----------	------------	--	--

85	33/34	Lifestyle, Double Hung, 31.5 X 57.5, Without HGP, Brown	<u>Item Price</u>	<u>Qty</u>	<u>Ext'd Price</u>
			\$821.26	2	\$1,642.52



Viewed From Exterior

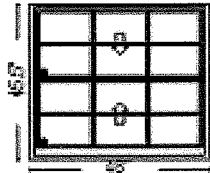
PK #
2138

1: 31.557.5 Double Hung, Equal
Frame Size: 31 1/2 X 57 1/2
Unit Type: No Program
General Information: No Package, Without Hinged Glass Panel, Clad, Pine, 5", 3 11/16", Jamliner Color: **Gray**
Exterior Color / Finish: **Standard Enduraclad, Brown**
Interior Color / Finish: **Prefinished White Paint Interior**
Glass: **Insulated Low-E Advanced Low-E Insulating Glass Argon Non High Altitude**
Hardware Options: **Cam-Action Lock, White, No Limited Opening Hardware, Order Sash Lift, No Integrated Sensor**
Screen: **Full Screen, Brown, InView™**
Performance Information: **U-Factor 0.30, SHGC 0.27, VLT 0.50, CPD PEL-N-35-00426-00002, Performance Class LC, PG 40, Calculated Positive DP Rating 40, Calculated Negative DP Rating 40, Year Rated 08|11, Clear Opening Width 28.312, Clear Opening Height 25.5, Clear Opening Area 5.013583, Egress Meets Typical for ground floor 5.0 sqft (E1) (United States Only)**
Grille: **GBG, No Custom Grille, 3/4" Contour, Traditional (3W2H / 3W2H), White, Brown**
Wrapping Information: **Foldout Fins, Factory Applied, No Exterior Trim, 6 9/16", 7 7/8", Standard Four Sided Jamb Extension, Factory Applied, Pella Recommended Clearance, Perimeter Length = 178".**

Rough Opening: 32 - 1/4" X 58 - 1/4"

Line #	Location:	Attributes		
--------	-----------	------------	--	--

90	35	Architect, Traditional, Double Hung, 48 X 45.5, Brown	<u>Item Price</u>	<u>Qty</u>	<u>Ext'd Price</u>
			\$1,645.70	1	\$1,645.70



Viewed From Exterior

PK #
2139

1: Traditional, 4845.5 Double Hung, Equal
Frame Size: 48 X 45 1/2
General Information: Standard, Luxury, Clad, Pine, 5", 3 11/16"
Exterior Color / Finish: Painted, Standard Enduraclad, Brown
Interior Color / Finish: Prefinished White Paint Interior
Sash / Panel: Ogee, Ogee, Standard, No Sash Lugs
Glass: Insulated Dual Tempered Obscure Low-E Obscure Advanced Low-E Insulating Glass Argon Non High Altitude
Hardware Options: Cam-Action Lock, White, No Window Opening Control Device, No Limited Opening Hardware, Order Sash Lift, No Integrated Sensor
Screen: Full Screen, Standard EnduraClad, Brown, Standard, InView™
Performance Information: U-Factor 0.29, SHGC 0.25, VLT 0.46, CPD PEL-N-232-01146-00001, Performance Class CW, PG 50, Calculated Positive DP Rating 50, Calculated Negative DP Rating 50, Year Rated 08|11, Clear Opening Width 44.625, Clear Opening Height 18.312, Clear Opening Area 5.674813, Egress Does not meet typical United States egress, but may comply with local code requirements
Grille: GBG, No Custom Grille, 3/4" Contour, Traditional (3W2H / 3W2H), White, Brown
Wrapping Information: Foldout Fins, Factory Applied, No Exterior Trim, 6 9/16", 7 7/8", Standard Four Sided Jamb Extension, Factory Applied, Pella Recommended Clearance, Perimeter Length = 187".

Obscure Glass Style: Pattern62(Standard)

Rough Opening: 48 - 3/4" X 46 - 1/4"

Customer Notes: DUE TO THE WIDTH HAD TO QUOTE ARCHITECT.

THIS WINDOW WILL LOOK DIFFERENT THEN THE OTHERS

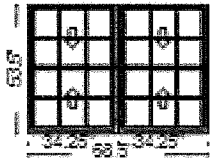
For more information regarding the finishing, maintenance, service and warranty of all Pella® products, visit the Pella® website at www.pella.com

Line #	Location:	Attributes	Item Price	Qty	Ext'd Price
--------	-----------	------------	------------	-----	-------------

95 31/32

Lifestyle, 2-Wide Double Hung, 68.5 X 53.5, Without HGP, Brown

\$1,963.51 1 \$1,963.51



PK #
2138

Viewed From Exterior

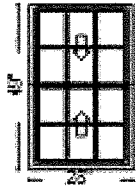
1: 34.2553.5 Double Hung, Equal
Frame Size: 34 1/4 X 53 1/2
Unit Type: No Program
General Information: No Package, Without Hinged Glass Panel, Clad, Pine, 5", 3 11/16", Jambliner Color: **Gray**
Exterior Color / Finish: Standard Enduraclad, **Brown**
Interior Color / Finish: **Prefinished White Paint Interior**
Glass: **Insulated Low-E Advanced Low-E Insulating Glass Argon Non High Altitude**
Hardware Options: **Cam-Action Lock, White, No Limited Opening Hardware, Order Sash Lift, No Integrated Sensor**
Screen: **Full Screen, Brown, InView™**
Performance Information: **U-Factor 0.30, SHGC 0.27, VLT 0.50, CPD PEL-N-35-00426-00002, Performance Class LC, PG 35, Calculated Positive DP Rating 35, Calculated Negative DP Rating 35, Year Rated 08|11, Clear Opening Width 31.062, Clear Opening Height 23.5, Clear Opening Area 5.069146, Egress Does not meet typical United States egress, but may comply with local code requirements**
Grille: **GBG, No Custom Grille, 3/4" Contour, Traditional (3W2H / 3W2H), White, Brown**
Vertical Mull 1: **FactoryMull, Standard Joining Mullion, Mull Design Pressure- 20, Overall Thru Direction- Vertical**

2: 34.2553.5 Double Hung, Equal
Frame Size: 34 1/4 X 53 1/2
Unit Type: **No Program**
General Information: **No Package, Without Hinged Glass Panel, Clad, Pine, 5", 3 11/16", Jambliner Color:** Gray
Exterior Color / Finish: Standard Enduraclad, **Brown**
Interior Color / Finish: **Prefinished White Paint Interior**
Glass: **Insulated Low-E Advanced Low-E Insulating Glass Argon Non High Altitude**
Hardware Options: **Cam-Action Lock, White, No Limited Opening Hardware, Order Sash Lift, No Integrated Sensor**
Screen: **Full Screen, Brown, InView™**
Performance Information: **U-Factor 0.30, SHGC 0.27, VLT 0.50, CPD PEL-N-35-00426-00002, Performance Class LC, PG 35, Calculated Positive DP Rating 35, Calculated Negative DP Rating 35, Year Rated 08|11, Clear Opening Width 31.062, Clear Opening Height 23.5, Clear Opening Area 5.069146, Egress Does not meet typical United States egress, but may comply with local code requirements**
Grille: **GBG, No Custom Grille, 3/4" Contour, Traditional (3W2H / 3W2H), White, Brown**
Wrapping Information: **Foldout Fins, Factory Applied, No Exterior Trim, 6 9/16", 7 7/8", Standard Four Sided Jamb Extension, Factory Applied, Pella Recommended Clearance, Perimeter Length = 244".**

Rough Opening: 69 - 1/4" X 54 - 1/4"

Line #	Location:	Attributes		
--------	-----------	------------	--	--

100	50/51	Lifestyle, Double Hung, 28 X 49, Without HGP, Brown	<u>Item Price</u>	<u>Qty</u>	<u>Ext'd Price</u>
			\$843.52	2	\$1,687.04



Viewed From Exterior

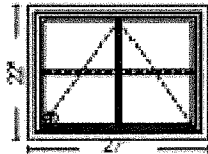
PK #
2138

1: 2849 Double Hung, Equal
Frame Size: 28 X 49
Unit Type: No Program
General Information: No Package, Without Hinged Glass Panel, Clad, Pine, 5", 3 11/16", Jambliner Color: **Gray**
Exterior Color / Finish: **Standard Enduraclad, Brown**
Interior Color / Finish: **Prefinished White Paint Interior**
Glass: **Insulated Low-E Advanced Low-E Insulating Glass Argon Non High Altitude**
Hardware Options: **Cam-Action Lock, White, No Limited Opening Hardware, Order Sash Lift, No Integrated Sensor**
Screen: **Full Screen, Brown, InView™**
Performance Information: **U-Factor 0.30, SHGC 0.27, VLT 0.50, CPD PEL-N-35-00426-00002, Performance Class LC, PG 50, Calculated Positive DP Rating 50, Calculated Negative DP Rating 50, Year Rated 08|11, Clear Opening Width 24.812, Clear Opening Height 21.25, Clear Opening Area 3.661493, Egress Does not meet typical United States egress, but may comply with local code requirements**
Grille: **GBG, No Custom Grille, 3/4" Contour, Traditional (3W2H / 3W2H), White, Brown**
Wrapping Information: **Foldout Fins, Factory Applied, No Exterior Trim, 6 9/16", 7 7/8", Standard Four Sided Jamb Extension, Factory Applied, Pella Recommended Clearance, Perimeter Length = 154".**

Rough Opening: 28 - 3/4" X 49 - 3/4"

Line #	Location:	Attributes		
--------	-----------	------------	--	--

105	53	Lifestyle, Awning, Vent, 27 X 22, Without HGP, Brown	<u>Item Price</u>	<u>Qty</u>	<u>Ext'd Price</u>
			\$768.94	1	\$768.94



Viewed From Exterior

PK #
2139

1: 2722 Vent Awning
Frame Size: 27 X 22
General Information: No Package, Without Hinged Glass Panel, Clad, Pine, 5", 3 11/16"
Exterior Color / Finish: **Standard Enduraclad, Brown**
Interior Color / Finish: **Prefinished White Paint Interior**
Glass: **Insulated Tempered Low-E Advanced Low-E Insulating Glass Argon Non High Altitude**
Hardware Options: **Wash Hinge Hardware, Fold-Away Crank, White, No Limited Opening Hardware, No Integrated Sensor, Sill**
Screen: **Full Screen, White, InView™**
Performance Information: **U-Factor 0.29, SHGC 0.25, VLT 0.46, CPD PEL-N-37-00723-00001, Performance Class LC, PG 30, Calculated Positive DP Rating 30, Calculated Negative DP Rating 30, Year Rated 08|11, Egress Not Applicable**
Grille: **GBG, No Custom Grille, 3/4" Contour, Traditional (2W2H), White, Brown**
Wrapping Information: **Foldout Fins, Factory Applied, No Exterior Trim, 6 9/16", 7 7/8", Standard Four Sided Jamb Extension, Factory Applied, Pella Recommended Clearance, Perimeter Length = 98".**

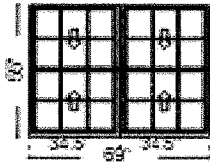
Rough Opening: 27 - 3/4" X 22 - 3/4"

Line #	Location:	Attributes	Item Price	Qty	Ext'd Price
--------	-----------	------------	------------	-----	-------------

110 48

Lifestyle, 2-Wide Double Hung, 69 X 55, Without HGP, Brown

\$1,979.12 1 \$1,979.12



PK #
2138

Viewed From Exterior

1: 34.555 Double Hung, Equal
Frame Size: 34 1/2 X 55
Unit Type: No Program
General Information: No Package, Without Hinged Glass Panel, Clad, Pine, 5", 3 11/16", Jambliner Color: **Gray**
Exterior Color / Finish: **Standard Enduraclad, Brown**
Interior Color / Finish: **Prefinished White Paint Interior**
Glass: **Insulated Low-E Advanced Low-E Insulating Glass Argon Non High Altitude**
Hardware Options: **Cam-Action Lock, White, No Limited Opening Hardware, Order Sash Lift, No Integrated Sensor**
Screen: **Full Screen, Brown, InView™**
Performance Information: **U-Factor 0.30, SHGC 0.27, VLT 0.50, CPD PEL-N-35-00426-00002, Performance Class LC, PG 35, Calculated Positive DP Rating 35, Calculated Negative DP Rating 35, Year Rated 08|11, Clear Opening Width 31.312, Clear Opening Height 24.25, Clear Opening Area 5.273028, Egress Meets Typical for ground floor 5.0 sqft (E1) (United States Only)**
Grille: **GBG, No Custom Grille, 3/4" Contour, Traditional (3W2H / 3W2H), White, Brown**
Vertical Mull 1: **FactoryMull, Standard Joining Mullion, Mull Design Pressure- 20, Overall Thru Direction- Vertical**
2: 34.555 Double Hung, Equal
Frame Size: 34 1/2 X 55
Unit Type: **No Program**
General Information: **No Package, Without Hinged Glass Panel, Clad, Pine, 5", 3 11/16", Jambliner Color:** Gray
Exterior Color / Finish: Standard Enduraclad, Brown
Interior Color / Finish: Prefinished White Paint Interior
Glass: Insulated Low-E Advanced Low-E Insulating Glass Argon Non High Altitude
Hardware Options: Cam-Action Lock, White, No Limited Opening Hardware, Order Sash Lift, No Integrated Sensor
Screen: Full Screen, Brown, InView™
Performance Information: U-Factor 0.30, SHGC 0.27, VLT 0.50, CPD PEL-N-35-00426-00002, Performance Class LC, PG 35, Calculated Positive DP Rating 35, Calculated Negative DP Rating 35, Year Rated 08|11, Clear Opening Width 31.312, Clear Opening Height 24.25, Clear Opening Area 5.273028, Egress Meets Typical for ground floor 5.0 sqft (E1) (United States Only)
Grille: GBG, No Custom Grille, 3/4" Contour, Traditional (3W2H / 3W2H), White, Brown
Wrapping Information: Foldout Fins, Factory Applied, No Exterior Trim, 6 9/16", 7 7/8", Standard Four Sided Jamb Extension, Factory Applied, Pella Recommended Clearance, Perimeter Length = 248".

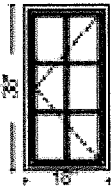
Rough Opening: 69 - 3/4" X 55 - 3/4"

Line #	Location:	Attributes
--------	-----------	------------

120 54

Lifestyle, Casement Left, 18 X 38, Without HGP, Brown

Item Price	Qty	Ext'd Price
\$690.67	1	\$690.67



PK #
2138

Viewed From Exterior

1: 1838 Left Casement
Frame Size: 18 X 38
Unit Type: No Program
General Information: No Package, Without Hinged Glass Panel, Clad, Pine, 5", 3 11/16"
Exterior Color / Finish: Standard Enduraclad, Brown
Interior Color / Finish: Prefinished White Paint Interior
Glass: Insulated Low-E Advanced Low-E Insulating Glass Argon Non High Altitude
Hardware Options: Wash Hinge Hardware, Fold-Away Crank, White, No Window Opening Control Device, No Limited Opening Hardware, No Integrated Sensor
Screen: Full Screen, White, InView™
Performance Information: U-Factor 0.29, SHGC 0.25, VLT 0.47, CPD PEL-N-14-00678-00001, Performance Class LC, PG 50, Calculated Positive DP Rating 50, Calculated Negative DP Rating 50, Year Rated 08|11, Clear Opening Width 8.25, Clear Opening Height 33.875, Clear Opening Area 1.940755, Egress Does not meet typical United States egress, but may comply with local code requirements
Grille: GBG, No Custom Grille, 3/4" Contour, Traditional (2W3H), White, Brown
Wrapping Information: Foldout Fins, Factory Applied, No Exterior Trim, 6 9/16", 7 7/8", Standard Four Sided Jamb Extension, Factory Applied, Pella Recommended Clearance, Perimeter Length = 112".

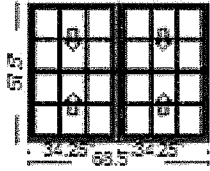
Rough Opening: 18 - 3/4" X 38 - 3/4"

Line #	Location:	Attributes
--------	-----------	------------

125 42/43

Lifestyle, 2-Wide Double Hung, 68.5 X 57.5, Without HGP, Brown

Item Price	Qty	Ext'd Price
\$2,025.97	1	\$2,025.97



PK #
2138

Viewed From Exterior

1: 34.2557.5 Double Hung, Equal

Frame Size: 34 1/4 X 57 1/2

Unit Type: No Program

General Information: No Package, Without Hinged Glass Panel, Clad, Pine, 5", 3 11/16", Jambliner Color: Gray

Exterior Color / Finish: Standard Enduraclad, Brown

Interior Color / Finish: Prefinished White Paint Interior

Glass: Insulated Low-E Advanced Low-E Insulating Glass Argon Non High Altitude

Hardware Options: Cam-Action Lock, White, No Limited Opening Hardware, Order Sash Lift, No Integrated Sensor

Screen: Full Screen, Brown, InView™

Performance Information: U-Factor 0.30, SHGC 0.27, VLT 0.50, CPD PEL-N-35-00426-00002, Performance Class LC, PG 35, Calculated Positive DP Rating 35, Calculated Negative DP Rating 35, Year Rated 08|11, Clear Opening Width 31.062, Clear Opening Height 25.5, Clear Opening Area 5.500563, Egress Meets Typical for ground floor 5.0 sqft (E1) (United States Only)

Grille: GBG, No Custom Grille, 3/4" Contour, Traditional (3W2H / 3W2H), White, Brown

Vertical Mull 1: FactoryMull, Standard Joining Mullion, Mull Design Pressure- 20, Overall Thru Direction- Vertical

2: 34.2557.5 Double Hung, Equal

Frame Size: 34 1/4 X 57 1/2

Unit Type: No Program

General Information: No Package, Without Hinged Glass Panel, Clad, Pine, 5", 3 11/16", Jambliner Color: Gray

Exterior Color / Finish: Standard Enduraclad, Brown

Interior Color / Finish: Prefinished White Paint Interior

Glass: Insulated Low-E Advanced Low-E Insulating Glass Argon Non High Altitude

Hardware Options: Cam-Action Lock, White, No Limited Opening Hardware, Order Sash Lift, No Integrated Sensor

Screen: Full Screen, Brown, InView™

Performance Information: U-Factor 0.30, SHGC 0.27, VLT 0.50, CPD PEL-N-35-00426-00002, Performance Class LC, PG 35, Calculated Positive DP Rating 35, Calculated Negative DP Rating 35, Year Rated 08|11, Clear Opening Width 31.062, Clear Opening Height 25.5, Clear Opening Area 5.500563, Egress Meets Typical for ground floor 5.0 sqft (E1) (United States Only)

Grille: GBG, No Custom Grille, 3/4" Contour, Traditional (3W2H / 3W2H), White, Brown

Wrapping Information: Foldout Fins, Factory Applied, No Exterior Trim, 6 9/16", 7 7/8", Standard Four Sided Jamb Extension, Factory Applied, Pella Recommended Clearance, Perimeter Length = 252".

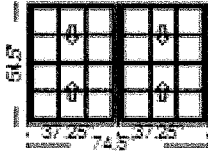
Rough Opening: 69 - 1/4" X 58 - 1/4"

Line #	Location:	Attributes
--------	-----------	------------

130 22

Lifestyle, 2-Wide Double Hung, 74.5 X 54.5, Without HGP, Brown

Item Price	Qty	Ext'd Price
\$2,025.97	1	\$2,025.97



PK #
2138

Viewed From Exterior

1: 37.2554.5 Double Hung, Equal
Frame Size: 37 1/4 X 54 1/2
Unit Type: No Program
General Information: No Package, Without Hinged Glass Panel, Clad, Pine, 5", 3 11/16", Jambliner Color: **Gray**
Exterior Color / Finish: **Standard Enduraclad, Brown**
Interior Color / Finish: **Prefinished White Paint Interior**
Glass: **Insulated Low-E Advanced Low-E Insulating Glass Argon Non High Altitude**
Hardware Options: **Cam-Action Lock, White, No Limited Opening Hardware, Order Sash Lift, No Integrated Sensor**
Screen: **Full Screen, Brown, InView™**
Performance Information: **U-Factor 0.30, SHGC 0.27, VLT 0.50, CPD PEL-N-35-00426-00002, Performance Class LC, PG 30, Calculated Positive DP Rating 30, Calculated Negative DP Rating 30, Year Rated 08|11, Clear Opening Width 34.062, Clear Opening Height 24, Clear Opening Area 5.677, Egress Meets Typical for ground floor 5.0 sqft (E1) (United States Only)**
Grille: **GBG, No Custom Grille, 3/4" Contour, Traditional (3W2H / 3W2H), White, Brown**
Vertical Mull 1: **FactoryMull, Standard Joining Mullion, Mull Design Pressure- 20, Overall Thru Direction- Vertical**

2: 37.2554.5 Double Hung, Equal
Frame Size: 37 1/4 X 54 1/2
Unit Type: No Program
General Information: **No Package, Without Hinged Glass Panel, Clad, Pine, 5", 3 11/16", Jambliner Color: Gray**
Exterior Color / Finish: Standard Enduraclad, Brown
Interior Color / Finish: Prefinished White Paint Interior
Glass: Insulated Low-E Advanced Low-E Insulating Glass Argon Non High Altitude
Hardware Options: Cam-Action Lock, White, No Limited Opening Hardware, Order Sash Lift, No Integrated Sensor
Screen: Full Screen, Brown, InView™
Performance Information: U-Factor 0.30, SHGC 0.27, VLT 0.50, CPD PEL-N-35-00426-00002, Performance Class LC, PG 30, Calculated Positive DP Rating 30, Calculated Negative DP Rating 30, Year Rated 08|11, Clear Opening Width 34.062, Clear Opening Height 24, Clear Opening Area 5.677, Egress Meets Typical for ground floor 5.0 sqft (E1) (United States Only)
Grille: GBG, No Custom Grille, 3/4" Contour, Traditional (3W2H / 3W2H), White, Brown
Wrapping Information: Foldout Fins, Factory Applied, No Exterior Trim, 6 9/16", 7 7/8", Standard Four Sided Jamb Extension, Factory Applied, Pella Recommended Clearance, Perimeter Length = 258".

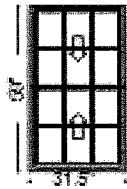
Rough Opening: 75 - 1/4" X 55 - 1/4"

Line #	Location:	Attributes			
--------	-----------	------------	--	--	--

135 45

Lifestyle, Double Hung, 31.5 X 59, Without HGP, Brown

Item Price	Qty	Ext'd Price
\$952.83	1	\$952.83



PK #
2138

Viewed From Exterior

1: 31.559 Double Hung, Equal
Frame Size: 31 1/2 X 59
Unit Type: No Program
General Information: No Package, Without Hinged Glass Panel, Clad, Pine, 5", 3 11/16", Jambliner Color: **Gray**
Exterior Color / Finish: **Standard Enduraclad, Brown**
Interior Color / Finish: **Prefinished White Paint Interior**
Glass: **Insulated Low-E Advanced Low-E Insulating Glass Argon Non High Altitude**
Hardware Options: **Cam-Action Lock, White, No Limited Opening Hardware, Order Sash Lift, No Integrated Sensor**
Screen: **Full Screen, Brown, InView™**
Performance Information: **U-Factor 0.30, SHGC 0.27, VLT 0.50, CPD PEL-N-35-00426-00002, Performance Class LC, PG 40, Calculated Positive DP Rating 40, Calculated Negative DP Rating 40, Year Rated 08|11, Clear Opening Width 28.312, Clear Opening Height 26.25, Clear Opening Area 5.161042, Egress Meets Typical for ground floor 5.0 sqft (E1) (United States Only)**
Grille: **GBG, No Custom Grille, 3/4" Contour, Traditional (3W2H / 3W2H), White, Brown**
Wrapping Information: **Foldout Fins, Factory Applied, No Exterior Trim, 6 9/16", 7 7/8", Standard Four Sided Jamb Extension, Factory Applied, Pella Recommended Clearance, Perimeter Length = 181".**

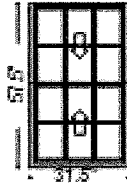
Rough Opening: 32 - 1/4" X 59 - 3/4"

Line #	Location:	Attributes			
--------	-----------	------------	--	--	--

140 46

Lifestyle, Double Hung, 31.5 X 57.5, Without HGP, Brown

Item Price	Qty	Ext'd Price
\$821.26	1	\$821.26



PK #
2138

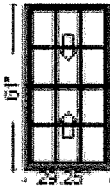
Viewed From Exterior

1: 31.557.5 Double Hung, Equal
Frame Size: 31 1/2 X 57 1/2
Unit Type: No Program
General Information: No Package, Without Hinged Glass Panel, Clad, Pine, 5", 3 11/16", Jambliner Color: **Gray**
Exterior Color / Finish: **Standard Enduraclad, Brown**
Interior Color / Finish: **Prefinished White Paint Interior**
Glass: **Insulated Low-E Advanced Low-E Insulating Glass Argon Non High Altitude**
Hardware Options: **Cam-Action Lock, White, No Limited Opening Hardware, Order Sash Lift, No Integrated Sensor**
Screen: **Full Screen, Brown, InView™**
Performance Information: **U-Factor 0.30, SHGC 0.27, VLT 0.50, CPD PEL-N-35-00426-00002, Performance Class LC, PG 40, Calculated Positive DP Rating 40, Calculated Negative DP Rating 40, Year Rated 08|11, Clear Opening Width 28.312, Clear Opening Height 25.5, Clear Opening Area 5.013583, Egress Meets Typical for ground floor 5.0 sqft (E1) (United States Only)**
Grille: **GBG, No Custom Grille, 3/4" Contour, Traditional (3W2H / 3W2H), White, Brown**
Wrapping Information: **Foldout Fins, Factory Applied, No Exterior Trim, 6 9/16", 7 7/8", Standard Four Sided Jamb Extension, Factory Applied, Pella Recommended Clearance, Perimeter Length = 178".**

Rough Opening: 32 - 1/4" X 58 - 1/4"

Line #	Location:	Attributes
--------	-----------	------------

145 57



Viewed From Exterior

PK #
2138

Lifestyle, Double Hung, 29.25 X 61, Without HGP, Brown

Item Price	Qty	Ext'd Price
\$1,050.45	1	\$1,050.45

1: 29.2561 Double Hung, Equal

Frame Size: 29 1/4 X 61

Unit Type: No Program

General Information: No Package, Without Hinged Glass Panel, Clad, Pine, 5", 3 11/16", Jambliner Color: Gray

Exterior Color / Finish: Standard Enduraclad, Brown

Interior Color / Finish: Prefinished White Paint Interior

Glass: Insulated Obscure Low-E Obscure Advanced Low-E Insulating Glass Argon Non High Altitude

Hardware Options: Cam-Action Lock, White, No Limited Opening Hardware, Order Sash Lift, No Integrated Sensor

Screen: Full Screen, Brown, InView™

Performance Information: U-Factor 0.30, SHGC 0.27, VLT 0.50, CPD PEL-N-35-00427-00002, Performance Class LC, PG 35, Calculated Positive DP Rating 35, Calculated Negative DP Rating 35, Year Rated 08|11, Clear Opening Width 26.062, Clear Opening Height 27.25, Clear Opening Area 4.931871, Egress Does not meet typical United States egress, but may comply with local code requirements

Grille: GBG, No Custom Grille, 3/4" Contour, Traditional (3W2H / 3W2H), White, Brown

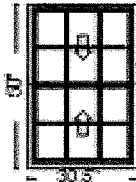
Wrapping Information: Foldout Fins, Factory Applied, No Exterior Trim, 6 9/16", 7 7/8", Standard Four Sided Jamb Extension, Factory Applied, Pella Recommended Clearance, Perimeter Length = 181".

Obscure Glass Style: Pattern62(Standard)

Rough Opening: 30" X 61.75"

Line #	Location:	Attributes
--------	-----------	------------

150 49



Viewed From Exterior

PK #
2138

Lifestyle, Double Hung, 30.5 X 50, Without HGP, Brown

Item Price	Qty	Ext'd Price
\$874.75	1	\$874.75

1: 30.550 Double Hung, Equal

Frame Size: 30 1/2 X 50

Unit Type: No Program

General Information: No Package, Without Hinged Glass Panel, Clad, Pine, 5", 3 11/16", Jambliner Color: Gray

Exterior Color / Finish: Standard Enduraclad, Brown

Interior Color / Finish: Prefinished White Paint Interior

Glass: Insulated Low-E Advanced Low-E Insulating Glass Argon Non High Altitude

Hardware Options: Cam-Action Lock, White, No Limited Opening Hardware, Order Sash Lift, No Integrated Sensor

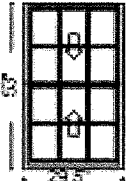
Screen: Full Screen, Brown, InView™

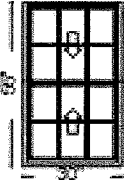
Performance Information: U-Factor 0.30, SHGC 0.27, VLT 0.50, CPD PEL-N-35-00426-00002, Performance Class LC, PG 40, Calculated Positive DP Rating 40, Calculated Negative DP Rating 40, Year Rated 08|11, Clear Opening Width 27.312, Clear Opening Height 21.75, Clear Opening Area 4.12525, Egress Does not meet typical United States egress, but may comply with local code requirements

Grille: GBG, No Custom Grille, 3/4" Contour, Traditional (3W2H / 3W2H), White, Brown

Wrapping Information: Foldout Fins, Factory Applied, No Exterior Trim, 6 9/16", 7 7/8", Standard Four Sided Jamb Extension, Factory Applied, Pella Recommended Clearance, Perimeter Length = 161".

Rough Opening: 31 - 1/4" X 50 - 3/4"

Line #	Location:	Attributes			
155	58	Lifestyle, Double Hung, 29.5 X 53, Without HGP, Brown	Item Price	Qty	Ext'd Price
			\$890.36	1	\$890.36
	 <p>Viewed From Exterior</p>	<p>1: 29.553 Double Hung, Equal Frame Size: 29 1/2 X 53 Unit Type: No Program General Information: No Package, Without Hinged Glass Panel, Clad, Pine, 5", 3 11/16", Jambliner Color: Gray Exterior Color / Finish: Standard Enduraclad, Brown Interior Color / Finish: Prefinished White Paint Interior Glass: Insulated Low-E Advanced Low-E Insulating Glass Argon Non High Altitude Hardware Options: Cam-Action Lock, White, No Limited Opening Hardware, Order Sash Lift, No Integrated Sensor Screen: Full Screen, Brown, InView™ Performance Information: U-Factor 0.30, SHGC 0.27, VLT 0.50, CPD PEL-N-35-00426-00002, Performance Class LC, PG 40, Calculated Positive DP Rating 40, Calculated Negative DP Rating 40, Year Rated 08 11, Clear Opening Width 26.312, Clear Opening Height 23.25, Clear Opening Area 4.248291, Egress Does not meet typical United States egress, but may comply with local code requirements Grille: GBG, No Custom Grille, 3/4" Contour, Traditional (3W2H / 3W2H), White, Brown Wrapping Information: Foldout Fins, Factory Applied, No Exterior Trim, 6 9/16", 7 7/8", Standard Four Sided Jamb Extension, Factory Applied, Pella Recommended Clearance, Perimeter Length = 165".</p>			
	PK # 2138				
		Rough Opening: 30 - 1/4" X 53 - 3/4"			

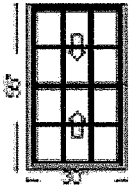
Line #	Location:	Attributes			
160	G1	Lifestyle, Double Hung, 30 X 55, Without HGP, Brown	Item Price	Qty	Ext'd Price
			\$905.98	1	\$905.98
	 <p>Viewed From Exterior</p>	<p>1: 3055 Double Hung, Equal Frame Size: 30 X 55 Unit Type: No Program General Information: No Package, Without Hinged Glass Panel, Clad, Pine, 5", 3 11/16", Jambliner Color: Gray Exterior Color / Finish: Standard Enduraclad, Brown Interior Color / Finish: Prefinished White Paint Interior Glass: Insulated Low-E Advanced Low-E Insulating Glass Argon Non High Altitude Hardware Options: Cam-Action Lock, White, No Limited Opening Hardware, Order Sash Lift, No Integrated Sensor Screen: Full Screen, Brown, InView™ Performance Information: U-Factor 0.30, SHGC 0.27, VLT 0.50, CPD PEL-N-35-00426-00002, Performance Class LC, PG 40, Calculated Positive DP Rating 40, Calculated Negative DP Rating 40, Year Rated 08 11, Clear Opening Width 26.812, Clear Opening Height 24.25, Clear Opening Area 4.515215, Egress Does not meet typical United States egress, but may comply with local code requirements Grille: GBG, No Custom Grille, 3/4" Contour, Traditional (3W2H / 3W2H), White, Brown Wrapping Information: Foldout Fins, Factory Applied, No Exterior Trim, 6 9/16", 7 7/8", Standard Four Sided Jamb Extension, Factory Applied, Pella Recommended Clearance, Perimeter Length = 170".</p>			
	PK # 2138				
		Rough Opening: 30 - 3/4" X 55 - 3/4"			

Line #	Location:	Attributes		
--------	-----------	------------	--	--

165 G2

Lifestyle, Double Hung, 30 X 55, Without HGP, Brown

Item Price	Qty	Ext'd Price
\$905.98	1	\$905.98



Viewed From Exterior

PK #
2138

1: 3055 Double Hung, Equal
Frame Size: 30 X 55
Unit Type: No Program
General Information: No Package, Without Hinged Glass Panel, Clad, Pine, 5", 3 11/16", Jambliner Color: **Gray**
Exterior Color / Finish: **Standard Enduraclad, Brown**
Interior Color / Finish: **Prefinished White Paint Interior**
Glass: **Insulated Low-E Advanced Low-E Insulating Glass Argon Non High Altitude**
Hardware Options: **Cam-Action Lock, White, No Limited Opening Hardware, Order Sash Lift, No Integrated Sensor**
Screen: **Full Screen, Brown, InView™**
Performance Information: **U-Factor 0.30, SHGC 0.27, VLT 0.50, CPD PEL-N-35-00426-00002, Performance Class LC, PG 40, Calculated Positive DP Rating 40, Calculated Negative DP Rating 40, Year Rated 08|11, Clear Opening Width 26.812, Clear Opening Height 24.25, Clear Opening Area 4.515215, Egress Does not meet typical United States egress, but may comply with local code requirements**
Grille: **GBG, No Custom Grille, 3/4" Contour, Traditional (3W2H / 3W2H), White, Brown**
Wrapping Information: **Foldout Fins, Factory Applied, No Exterior Trim, 6 9/16", 7 7/8", Standard Four Sided Jamb Extension, Factory Applied, Pella Recommended Clearance, Perimeter Length = 170".**

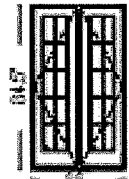
Rough Opening: 30 - 3/4" X 55 - 3/4"

Line #	Location:	Attributes		
--------	-----------	------------	--	--

170 PD1/PD2

Pella® Reserve, Traditional, Double Inswing Door, Active / Passive, 44 X 84.5, Brown

Item Price	Qty	Ext'd Price
\$7,058.08	2	\$14,116.16



Viewed From Exterior

PK #
2138

1: Traditional, 4484.5 Active / Passive Double Inswing Door
Frame Size: 44 X 84 1/2
General Information: Standard, Clad, Pine, 7 7/8", 6 9/16", Standard Sill, Bronze Finish Sill, Black Composite Threshold
Exterior Color / Finish: Painted, Standard Enduraclad, Brown
Interior Color / Finish: Prefinished White Paint Interior
Sash / Panel: Ogee, Ogee, Standard
Glass: Insulated Dual Tempered Obscure Low-E Obscure Advanced Low-E Insulating Glass Argon Non High Altitude
Hardware Options: Standard, Oil Rubbed Bronze, Order Handle Set, Multipoint Lock, No Integrated Sensor
Screen: No Screen
Performance Information: **U-Factor 0.27, SHGC 0.18, VLT 0.33, CPD PEL-N-218-07986-00001, Performance Class LC, PG 55, Calculated Positive DP Rating 55, Calculated Negative DP Rating 70, Year Rated 11**
Grille: **GBG, No Custom Grille, 3/4" Contour, Traditional (2W5H / 2W5H), White, Brown**
Wrapping Information: **Foldout Fins, Factory Applied, No Exterior Trim, 6 9/16", 7 7/8", Factory Applied, Pella Recommended Clearance, Perimeter Length = 257".**

Obscure Glass Style: Pattern62(Standard)

Rough Opening: 44 - 3/4" X 85"

Timberline® HDZ™ Availability

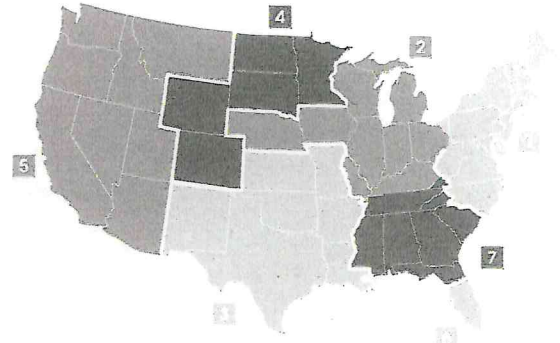
Color availability Chart

Most Popular Colors:

	1	2	3	4	5	6	7
Barkwood	•	•	•	•	•	•	•
Charcoal	•	•	•	•	•	•	•
Hickory	•	•	•	•	•	•	•
Hunter Green	•	•	•	•	•	•	•
Mission Brown	•	•	•	•	•	•	•
Pewter Gray	•	•	•	•	•	•	•
Shakewood	•	•	•	•	•	•	•
Slate	•	•	•	•	•	•	•
Weathered Wood	•	•	•	•	•	•	•

Regional Colors:

Birchwood	•	•	•	•	•	•	•
Biscayne Blue	•	•	•	•	•	•	•
Copper Canyon	•	•	•	•	•	•	•
Driftwood	•	•	•	•	•	•	•
Fox Hollow Gray	•	•	•	•	•	•	•
Golden Amber ¹	•	•	•	•	•	•	•
Oyster Gray	•	•	•	•	•	•	•
Patriot Red	•	•	•	•	•	•	•
Sunset Brick	•	•	•	•	•	•	•
White ^{2,3}	•	•	•	•	•	•	•
Williamsburg Slate	•	•	•	•	•	•	•

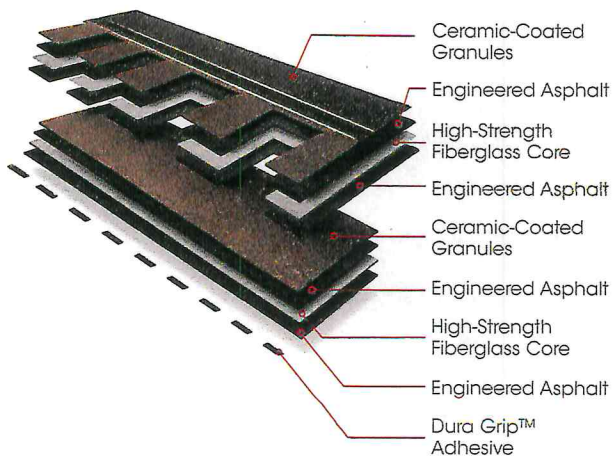


¹ Limited availability

² Rated by the Cool Roof Rating Council (CRRC); can be used to comply with 2019 Title 24 Part 6 Cool Roof Requirements of the California Code of Regulations.

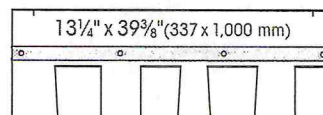
³ Timberline® HDZ™ White is ENERGY STAR® certified. Energy cost savings are not guaranteed and the amount of savings may vary based on climate zone, utility rates, radiative properties of roofing products, insulation levels, HVAC equipment efficiency, and other factors.

The protective layers of a Timberline® HDZ™ Shingle



Product/System Specifics

- Fiberglass asphalt construction
- Dimensions (approx.): 13 1/4" x 39 5/8" (337 x 1,000 mm)
- Exposure: 5 5/8" (143 mm)
- Bundles/Square: 3
- Pieces/Square: 64
- StainGuard® Algae Protection¹
- Hip/Ridge: TimberTex®; TimberCrest™; Seal-A-Ridge®; Z®Ridge; Ridglass®
- Starter: Pro-Start®; QuickStart®; WeatherBlocker™



Applicable Standards & Protocols:

- UL Listed to ANSI/UL 790 Class A
- State of Florida approved
- Classified by UL in accordance with ICC-ES AC438
- Meets ASTM D7158, Class H
- Meets ASTM D3161, Class F
- Meets ASTM D3018, Type 1
- Meets ASTM D3462²
- Miami-Dade County Product Control approved
- ICC-ES Evaluation Reports ESR-1475 and ESR-3267
- Meets Texas Department of Insurance Requirements
- ENERGY STAR® Certified (White Only) Rated by the CRRC; Can be used to comply with 2019 Title 24 Part 6 Cool Roof Requirements of the California Code of Regulations.

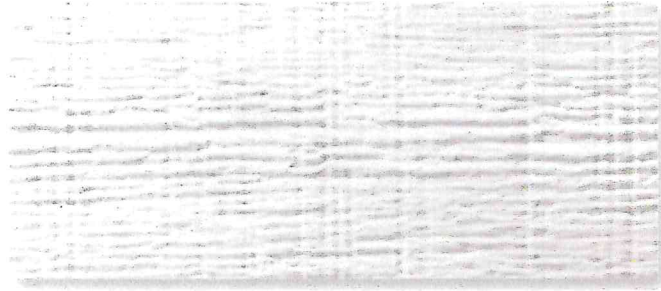
¹ StainGuard® algae protection is available only on shingles sold in packages bearing the StainGuard® logo. Products with StainGuard® algae protection are covered by a 10-year limited warranty against blue-green algae discoloration. See *GAF Shingle & Accessory Limited Warranty* for complete coverage and restrictions.

² Periodically tested by independent and internal labs to ensure compliance with ASTM D3462 at time of manufacture.

HardieTrim®

Length 12 ft boards

ROUGHSAWN



SMOOTH



4/4 ROUGHSAWN

Thickness	.75 in				
Width	3.5 in	5.5 in	7.25 in	9.25 in	11.25 in
Prime Pcs/Pallet	312	208	156	104	104
ColorPlus Pcs/Pallet	312	208	156	104	104

STATEMENT COLLECTION™	AW	AW	✓	AW	AW
DREAM COLLECTION™	✓	✓	✓	✓	✓
PRIME	✓	✓	✓	✓	✓

4/4 SMOOTH

Thickness	.75 in				
Width	3.5 in	5.5 in	7.25 in	9.25 in	11.25 in
Prime Pcs/Pallet	312	208	156	104	104
ColorPlus Pcs/Pallet	312	208	156	104	104

STATEMENT COLLECTION™	AW	✓	✓	AW	AW
DREAM COLLECTION™	✓	✓	✓	✓	✓
PRIME	✓	✓	✓	✓	✓

5/4 ROUGHSAWN

Thickness	1 in					
Width	3.5 in	4.5 in	5.5 in	7.25 in	9.25 in	11.25 in
Prime Pcs/Pallet	240	200	160	120	80	80
ColorPlus Pcs/Pallet	240	200	160	120	80	80

STATEMENT COLLECTION™	✓		✓	✓	AW	AW
DREAM COLLECTION™	✓	✓	✓	✓	✓	✓
PRIME	✓	✓	✓	✓	✓	✓

5/4 SMOOTH

Thickness	1 in					
Width	3.5 in	4.5 in	5.5 in	7.25 in	9.25 in	11.25 in
Prime Pcs/Pallet	240	200	160	120	80	80
ColorPlus Pcs/Pallet	240	200	160	120	80	80

STATEMENT COLLECTION™	✓		✓	✓	AW	✓
DREAM COLLECTION™	✓	✓	✓	✓	✓	✓
PRIME	✓	✓	✓	✓	✓	✓

AW - Arctic White only. Not available in the standard trim product Statement Collection™ color offering.

BATTEN BOARDS

SMOOTH



RUSTIC GRAIN®



SMOOTH & RUSTIC GRAIN®

Thickness	.75 in
Width	2.5 in
Prime Pcs/Pallet	190
ColorPlus Pcs/Pallet	437

STATEMENT COLLECTION™	✓
DREAM COLLECTION™	✓
PRIME	✓

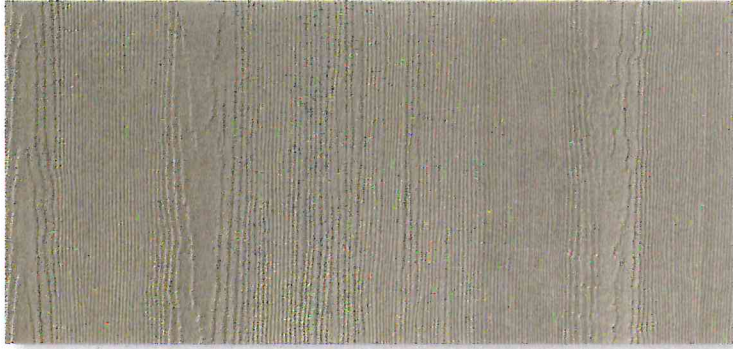
HardiePanel®

Thickness 5/16 in

SELECT CEDARMILL®, SMOOTH, STUCCO & SIERRA 8

	Size 4 ft x 8 ft	4 ft x 9 ft	4 ft x 10 ft
Prime Pcs/Pallet	50	50	50
ColorPlus Pcs/Pallet	50	—	50
Pcs/Sq	3.2	2.8	2.5

SELECT CEDARMILL®



	Size 4 ft x 8 ft	4 ft x 9 ft	4 ft x 10 ft
STATEMENT COLLECTION™			✓
DREAM COLLECTION™	✓		✓
PRIME	✓	✓	✓

SMOOTH



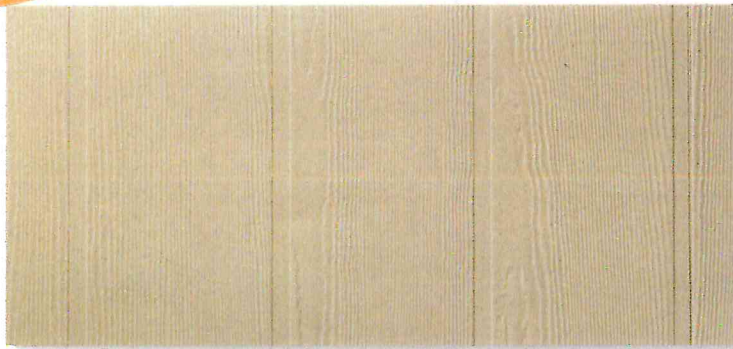
	Size 4 ft x 8 ft	4 ft x 9 ft	4 ft x 10 ft
STATEMENT COLLECTION™			✓
DREAM COLLECTION™	✓		✓
PRIME	✓	✓	✓

STUCCO



	Size 4 ft x 8 ft	4 ft x 9 ft	4 ft x 10 ft
STATEMENT COLLECTION™			
DREAM COLLECTION™	✓		✓
PRIME	✓	✓	✓

SIERRA 8



	Size 4 ft x 8 ft	4 ft x 9 ft	4 ft x 10 ft
STATEMENT COLLECTION™			
DREAM COLLECTION™			
PRIME	✓	✓	✓

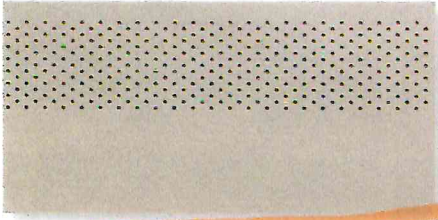
HardieSoffit®

Thickness 1/4 in

VENTED SMOOTH & SELECT CEDARMILL®

Length	12 ft	12 ft	8 ft
Width	12 in	16 in	24 in
Prime Pcs/Pallet	200	150	100
ColorPlus Pcs/Pallet	216	156	108

VENTED SMOOTH



Size	12 ft x 12 in	12 ft x 16 in	8 ft x 24 in
------	---------------	---------------	--------------

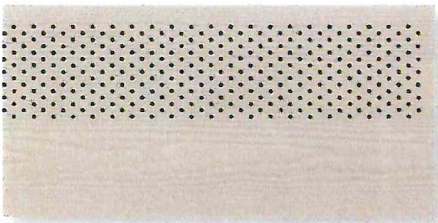
STATEMENT COLLECTION™

DREAM COLLECTION™

PRIME

✓	✓	✓
✓	✓	✓

VENTED SELECT CEDARMILL®



Size	12 ft x 12 in	12 ft x 16 in	8 ft x 24 in
------	---------------	---------------	--------------

STATEMENT COLLECTION™

DREAM COLLECTION™

PRIME

✓		
✓	✓	✓
✓	✓	✓

NON-VENTED SMOOTH & SELECT CEDARMILL®

Length	12 ft	12 ft	8 ft	8 ft
Width	12 in	16 in	24 in	48 in
Prime Pcs/Pallet	200	150	100	50
ColorPlus Pcs/Pallet	200	150	100	-

NON-VENTED SMOOTH



Size	12 ft x 12 in	12 ft x 16 in	8 ft x 24 in	8 ft x 48 in
------	---------------	---------------	--------------	--------------

STATEMENT COLLECTION™

DREAM COLLECTION™

PRIME

✓	✓	✓	
✓	✓	✓	✓

NON-VENTED SELECT CEDARMILL®



Size	12 ft x 12 in	12 ft x 16 in	8 ft x 24 in	8 ft x 48 in
------	---------------	---------------	--------------	--------------

STATEMENT COLLECTION™

DREAM COLLECTION™

PRIME

✓			
✓	✓	✓	
✓	✓	✓	✓

BEADED PORCH PANEL



Thickness	1/4 in
Length	8 ft
Width	48 in
Prime Pcs/Pallet	50
ColorPlus Pcs/Pallet	50

BEADED PORCH PANEL

STATEMENT COLLECTION™

DREAM COLLECTION™

PRIME

✓
✓

John McCarter Construction

Address: 475 WASHINGTON
South Lyon MI 48178

Phone: 248-446-1750

Website: www.johnmccarterconstruction.com



Quote

Quote Number: 124951

Date: 5/24/2023

Sales Person: Steve Witkowski

Customer Information

Name:	Sicheneder
Address:	2432 West Boston Blvd Detroit, Mi
Phone 1:	
Phone 2:	
Fax:	
Contact:	

Job Name:

Specifications

U.D. = 37-1/2" x 81-5/8"; R.O. = 38-1/4" x 82"

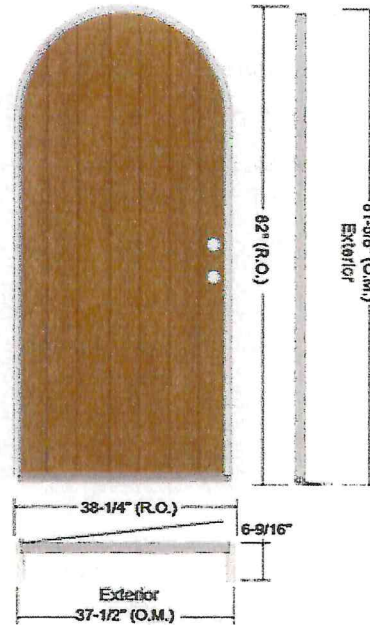


Image is viewed from Exterior!

Lead Time: Call for Lead Time ; Installed Sale

Item Description	Qty
Installed Sale: Standard Installation	
3' 0" x 6' 8" CCR100R Classic Craft Mahogany Grain Fiberglass Door - Left Hand Inswing	1
2-3/8" Backset - Double Bore (2-1/8" Dia. Bore w/Standard 5-1/2" Spacing) w/Faceplate Lockset Latch Prep	1
w/Standard Strike Prep w/Deadbolt 9202 Therma-Tru 2-1/4" Full Lip Strike Prep	
Set of Ball Bearing - Brushed Nickel Hinges	1
Primed Dura-Frame - 6-9/16" Jamb w/No Exterior Trim w/(2)Brushed Nickel Adjustable Security Strike Plates (for Lockset and Deadbolt)	1
Bronze Compression Weatherstrip	1
Tru-Defense Composite Adj. w/Dark Cap - Mill Finish Sill	1
PREFINISH: Stain Door Panel Interior & Exterior RUSTIC CLAY	1

Distributed by:



Version #: 1.36-O

Version Date: 6/22/2023

John McCarter Construction

Address: 475 WASHINGTON
South Lyon MI 48178

Phone: 248-446-1750

Website: www.johnmccarterconstruction.com



Quote

Page 1 of 4

Quote Number: 124951

Date: 5/24/2023

Sales Person: Steve Witkowski

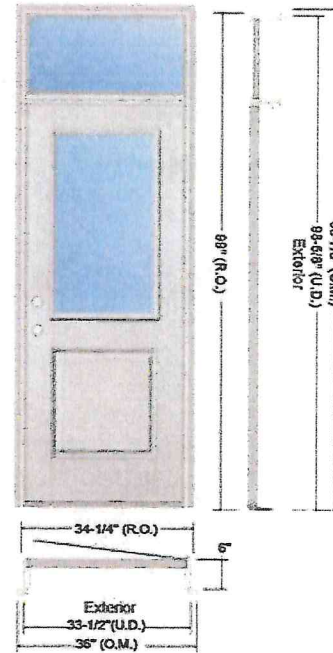


Image is viewed from Exterior!

Customer Information

Name: Sicheneder
Address: 2432 West Boston Blvd
 Detroit, Mi
Phone 1:
Phone 2:
Fax:
Contact:

Job Name:

Specifications

U.D. = 33-1/2" x 98-5/8"; R.O. = 34-1/4" x 99"
 O.M. of Exterior Trim = 36" x 99-7/8"

Lead Time: Call for Lead Time ; Installed Sale

Comment: For living room area, cannot do a double door opening not large enough

Item Description	Qty
Installed Sale: Standard Installation	
2' 8" x 6' 8" S6021-LE Smooth-Star Fiberglass Door w/Low E Glass - Right Hand Inswing (Tru-Guard Composite Edge)	1
2-3/8" Backset - Double Bore (2-1/8" Dia. Bore w/Standard 5-1/2" Spacing) w/Faceplate Lockset Latch Prep w/Standard Strike Prep w/Deadbolt 9202 Therma-Tru 2-1/4" Full Lip Strike Prep	1
Set of Standard - Brushed Nickel Hinges	1
33-1/2" x 17" (Frame Size) CustomLowE Rectangular Transom w/Low E Glass	1
Primed Dura-Frame - 6" Jamb w/Dura-Frame Brickmould Exterior Trim (Applied) w/(2)Brushed Nickel Adjustable Security Strike Plates (for Lockset and Deadbolt)	1
Bronze Compression Weatherstrip	1
Tru-Defense Composite Adj. w/Dark Cap - Mill Finish Sill	1
PREFINISH: Paint Door Panel Interior & Exterior 100 SNOW	1

Distributed by:



Version #: 1.36-O

Version Date: 6/22/2023

John McCarter Construction

Address: 475 WASHINGTON
South Lyon MI 48178

Phone: 248-446-1750

Website: www.johnmccarterconstruction.com



Quote

Quote Number: 124951

Date: 5/24/2023

Sales Person: Steve Witkowski

Customer Information

Name: Sicheneder

Address: 2432 West Boston Blvd
Detroit, Mi

Phone 1:

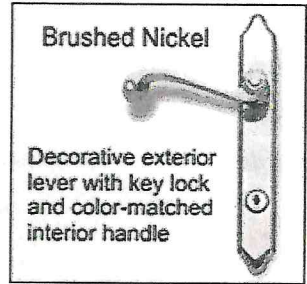
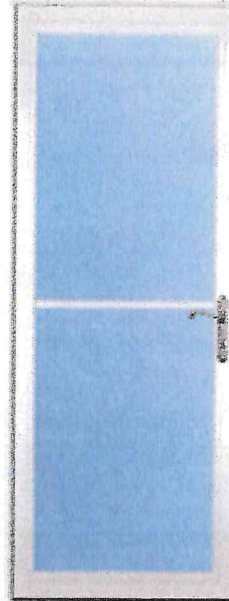
Phone 2:

Fax:

Contact:

Job Name:

Specifications



Lead Time: Special Order

Comment: For kitchen door in back

Item Description	Qty
2' 8" x 6' 9" Larson Lifestyle Screen Away® 356-52 Lifestyle Screen Away® White Storm Door ; {Features: 1-3/8" thick aluminum Frame; heavy-duty weatherstripping; One adjustable speed closer; Bottom expander adjusts to uneven sills; Limited lifetime warranty; REVERSA-HINGE for right or left mounts}	1
Brushed Nickel Exterior Lever w/Key Lock and Color-Matched Interior Handle (Included w/Door)	1

Distributed by:



Version #: 1.36-O

Version Date: 6/22/2023

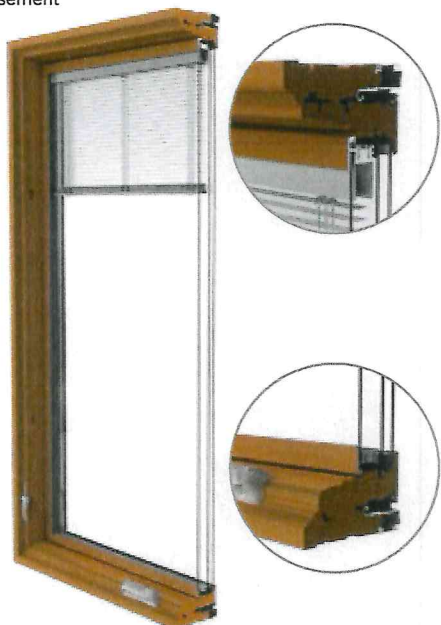
Pella® Lifestyle Series

Clad/Wood

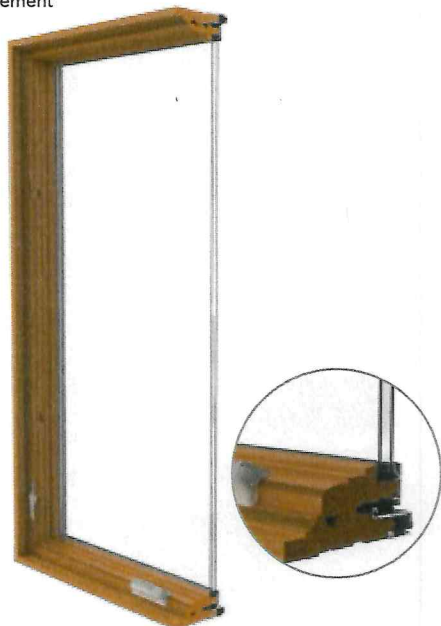


#1 performing wood window and patio door for the combination of energy, sound and value.¹

Triple-pane casement



Dual-pane casement



- **Performance redefined**

You don't have to compromise on any aspect of performance. Available performance solutions offer an unbeatable combination of energy efficiency, sound control and value.¹

- **ENERGY STAR® certified²**

Pella products offer energy-efficient options that will meet or exceed ENERGY STAR guidelines in all 50 states. Pella Lifestyle Series products with triple-pane glass have been awarded ENERGY STAR Most Efficient Mark in 2022.

- **Enhanced sound control**

Our patented, triple-pane design with Advanced Low-E glass allows for mixed glass thickness for enhanced sound dampening resulting in an average 52% noise reduction versus single-pane windows.³

- **Popular features and options**

Low-maintenance aluminum-clad exteriors. Factory prefinish with a choice of several paints and stains, or choose primed or unfinished. Several grille types and patterns and high-transparency screens are also available.

- **Intentional design for improved durability**

Intentional jamb/sill design helps seal the end grain of the wood and elevates it off the rough opening, reducing the potential for moisture.

- **Durable 3-way corner joint**

Three-way corner joints are made up of mortise-and-tenon, metal fasteners and commercial adhesive for added strength and durability.

- **Low-maintenance exteriors**

Aluminum-clad exteriors with EnduraClad® finish resists fading and chalking. It is applied in an overlapping fashion for exceptional protection.

- **Exclusive wood protection**

Pella's exclusive EnduraGuard® wood protection is applied after the pieces have been cut and milled, but prior to final assembly. It provides advanced protection against the effects of moisture, decay, stains from mold and mildew – as well as termite damage.

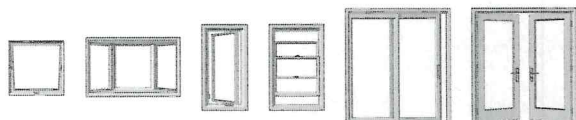
- **Best limited lifetime warranty⁴**

Pella Lifestyle Series products are covered by the best limited lifetime warranty in the industry for wood windows and patio doors.⁴

- **Testing beyond requirements**

At Pella, our products are tested beyond requirements to help ensure they have long-lasting performance and reduce call-backs for you.

Available in these window and patio door styles:⁵



Special shape windows also available.

^{1,2,3,4,5} See back cover for disclosures.

Product Specifications

Window & Patio Door Styles	Min. Width	Min. Height	Max. Width	Max. Height	Performance Class & Grade	Performance Values		
						U-Factor	SHGC	STC
Awning Dual-pane vent	21"	17"	59"	59"	LC30	0.25-0.35	0.19-0.51	25-28
Awning Triple-pane vent	21"	17"	59"	59"	LC25-CW50	0.12-0.19	0.24-0.56	31-37
Casement Dual-pane vent	17"	17"	35"	73"	LC30-LC50	0.25-0.35	0.19-0.51	25-31
Casement Triple-pane vent	17"	17"	35"	73"	R20-CW50	0.20-0.25	0.17-0.46	31-37
Fixed Casement Dual-pane	17"	17"	73"	73"	LC30-LC50	0.23-0.50	0.19-0.66	29-32
Fixed Casement Triple-pane	17"	17"	73"	73"	R20-CW50	0.19-0.24	0.17-0.46	33-37
Double-Hung Dual-pane vent	21"	35"	41.5"	77"	LC30-LC50	0.19-0.66	0.20-0.56	27-31
Hinged Patio Door Dual-pane single door	30"	80"	38"	96"	LC50	0.25-0.29	0.18-0.48	31
Hinged Patio Door Triple-pane single door	30"	80"	38"	96"	LC55	0.22-0.26	0.14-0.38	34-36
Hinged Patio Door Dual-pane double door	60"	80"	75"	96"	LC50	0.25-0.29	0.18-0.48	30-32
Hinged Patio Door Triple-pane double door	50"	80"	75"	96"	LC55	0.22-0.26	0.14-0.38	34-36
Sliding Patio Door Dual-pane single-door fixed (O)	31"	80"	49"	96"	CW50	0.24-0.33	0.18-0.51	27
Sliding Patio Door Triple-pane single-door fixed (O)	31"	80"	49"	96"	CW60	0.21-0.27	0.17-0.45	33-36
Sliding Patio Door Dual-pane double-door vent (OX or XO)	60"	80"	96"	96"	R20-LC50	0.24-0.33	0.18-0.51	29-32
Sliding Patio Door Triple-pane double-door vent (OX or XO)	60"	80"	96"	96"	R25-LC60	0.21-0.27	0.17-0.45	33-36

Window sizes available in 1/4" increments
Special sizes available in triple-pane patio doors. For more information regarding performance, visit pella.com/performance. For more information regarding frame and installation types, visit installpella.com.

Window Hardware

Essential Collection

Select from popular designs and finishes to suit every style.



Fold-away Crank



Cam-Action Lock

Finishes:



Champagne White Brown Matte Black



Satin Nickel Satin Brass

Patio Door Hardware

Essential Collection

Elevate your style and transform a home with elegant selections.



Hinged Patio Door Handle



Sliding Patio Door Handle

Finishes:



Champagne White Brown Matte Black



Satin Nickel Satin Brass

Colors

Prefinished Pine Interior Colors

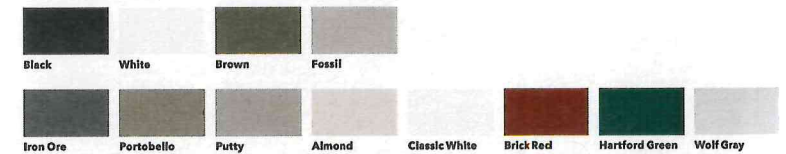
We can prefinish pine in your choice of several paint and stain colors. Unfinished or primed and ready-to-paint are also available.



White Bright White Linen White Golden Oak Stain Early American Stain Provincial Stain Black Stain

Aluminum-Clad Exterior Colors

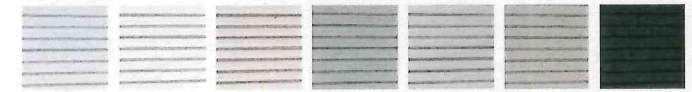
Our low-maintenance EnduraClad® exterior finish resists fading and helps protect windows and patio doors for years. Seacoast EnduraClad protective finish for coastal projects with high salt exposure is also available.



Black White Brown Fossil Iron Ore Portobello Putty Almond Classic White Brick Red Hartford Green Wolf Gray

Integrated Blinds⁴

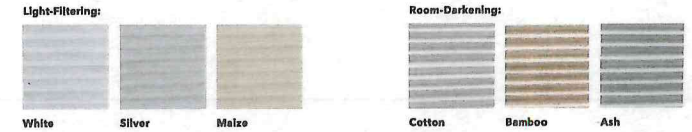
Raise blinds up for an unobstructed view or tilt to let in just the right amount of light. Our best integrated and accessible blinds are available manual or motorized with Pella® Insynctive® technology.



White Poplar White Bisque Storm Golden Mocha Black

Integrated Shades⁴

Our best integrated fabric shades feature a white exterior fabric for a uniform look from the street. Integrated and accessible shades are available manual or motorized with Pella Insynctive technology.



Light-Filtering: White Silver Maize Room-Darkening: Cotton Bamboo Ash

Haven't landed on the final blind or shade color selection? No problem. With our patented triple-pane design, you and your customer can make those decisions later in the schedule. Our triple-pane products come with all of the hardware to add a blind or shade straight from the factory or at a later time in the building or remodeling process.

Added Peace of Mind

Integrated Security Sensors

Integrated wireless security sensors maintain aesthetics, streamline security installation and ensure no warranty loss is caused by post-installation drilling. Sensors can be monitored via the free Pella® Insynctive® App and are compatible with major security panel systems.⁷ For more information, go to connectpella.com.

⁴ See back cover for disclosures.

Performance Packages

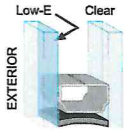
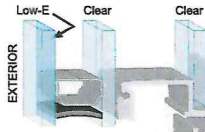
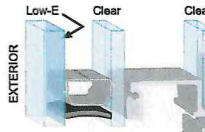
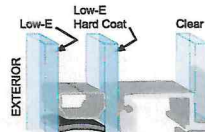
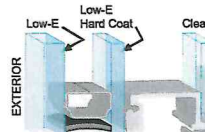
To make things easier, we've created performance packages.

Performance solutions offer an unbeatable combination of energy efficiency, sound control and value.¹ Create room-by-room solutions with the upgraded triple-pane glass design.

All values below are averages compared with single-pane windows.



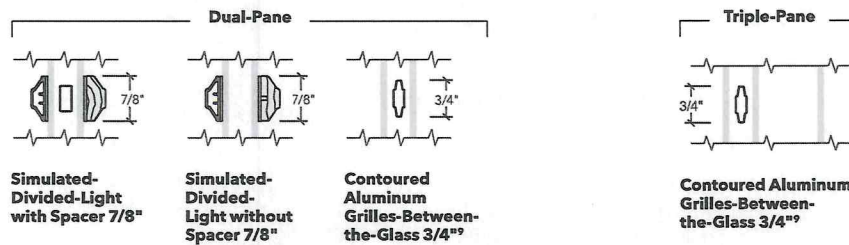
Pella® Lifestyle Series offers products awarded ENERGY STAR® Most Efficient for 2022.²

Base	Performance	Sound Control	Energy Efficiency	Ultimate Performance
	71% More Energy Efficient ³ + 34% Noise Reduction ³	52% Noise Reduction ³	83% More Energy Efficient ³	79% More Energy Efficient ³ + 52% Noise Reduction ³
 <p>Advanced Low-E</p> <p>Two panes of insulating, energy-efficient glass and our most popular features and options.</p>	 <p>Advanced Low-E SunDefense Low-E or NaturalSun Low-E</p> <p>A triple-pane glass design for a combination of both improved energy efficiency and sound performance.</p>	 <p>Advanced Low-E Sound-reduction glazing</p> <p>Triple-pane glass design featuring mixed glass thicknesses for enhanced sound dampening.</p>	 <p>AdvancedComfort</p> <p>A triple-pane glass design with upgraded AdvancedComfort Low-E glass for enhanced energy efficiency.</p>	 <p>AdvancedComfort Sound-reduction glazing</p> <p>A triple-pane glass design featuring mixed glass thicknesses with upgraded AdvancedComfort Low-E glass for enhanced energy efficiency.</p>

Patented triple-pane glass design gives flexibility to add integrated blinds or shades without impacting performance.

Grilles

Choose the look of true divided light, removable roomside grilles or make cleaning easier by selecting grilles-between-the-glass.



The Best Limited Lifetime Warranty in the Industry

We know your reputation matters and you stake your reputation on quality, dependable products. That's why we have the best limited lifetime warranty in the industry for wood windows and patio doors.⁴

¹ Performance solutions require upgrades to triple-pane, AdvancedComfort Low-E and mixed glass thickness. Based on comparing product quotes and published STC/OITC and U-Factor ratings of leading national wood window and patio door brands.

² Some Pella products may not meet ENERGY STAR certification in Canada. For more information, contact your local Pella sales representative or go to nrcan.gc.ca/energy/products/categories/fenestration/13739.

³ Reduction in sound based on OITC ratings of Pella Lifestyle Series windows with respective performance package compared to a single-pane wood or vinyl window with an OITC of 19. Calculated by using the sound transmission loss values in the 80 to 4000 Hz range as measured in accordance with ASTM E-90(09). Actual results may vary.

⁴ Based on comparing written limited warranties of leading national wood window and wood patio door brands. See written limited warranty for details, including exceptions and limitations, at pella.com/warranty.

⁵ Double-hung windows available in dual-pane only.

⁶ Available with triple-pane products only.

⁷ Requires the Insynctive App on a smart device, an Insynctive Bridge and a wireless home router with internet connection.

⁸ Window energy efficiency calculated in a computer simulation using RESFEN 6.0 default parameters for a 2000 sq. foot new construction single-story home when Pella Lifestyle Series windows with the respective performance package are compared to a single-pane wood or vinyl window. The energy efficiency and actual savings will vary by location. The average window energy efficiency is based on a national average of 94 modeled cities across the country and weighting based on population. For more details see pella.com/methodology.

⁹ Appearance of exterior grille color may vary depending on the Low-E insulating glass selection.