

Manufacturer

Georgia-Pacific Gypsum
133 Peachtree Street
Atlanta, GA 30303

Technical Service Hotline: 1-800-225-6119

Description

DensGlass® Sheathing is a gypsum panel made of a treated, water-resistant core, surfaced with fiberglass mats and a GOLD colored primer coating. Providing superb protection from the elements, DensGlass Sheathing is resistant to delamination and deterioration due to weather exposure—even during construction delays that last as long as twelve months after installation and are backed by a limited warranty against delamination and deterioration for up to 12 months of exposure to normal weather conditions.* DensGlass Sheathing panels are also mold-resistant, and have scored a 10, the highest level of performance for mold resistance under ASTM D3273 test method.

DensGlass Sheathing exhibits a dimensional stability that assures resistance to warping, rippling, buckling and sagging for a flat and even substrate and is noncombustible as defined and tested in accordance with ASTM E136 or CAN/ULC S114. Since DensGlass Sheathing is strong in both directions, it may be installed either parallel or perpendicular to wall framing members (always follow specific assembly installation instructions).

Primary Uses

Because of the superior performance of DensGlass Sheathing, it is specified for exterior walls, ceilings and soffits in a wide variety of applications. These include exterior insulation and finish systems (EIFS); cavity brick or stone veneer applications; cladding such as wood siding, vinyl siding, composition siding, wood shingles, shakes, conventional stucco systems, plywood siding panels; and interior finish systems that require a substrate panel with superior fire and moisture resistance.

For EIFS applications, DensGlass Sheathing is an ideal substrate for adhesive or mechanical application of expanded polystyrene or extruded polystyrene insulation, and is recommended in all climate zones.

Manufacturers of water and air resistive barriers, which include attached flexible membranes, self-adhered membrane and liquid applied, have found DensGlass Sheathing to be a suitable substrate for their systems.

DensGlass Sheathing is an ideal product for exterior ceilings and soffits for both cold and warm climate zones. It resists sagging, even under exceptionally humid conditions. Panels are applied directly to structural framing. Surface and joints may be finished and painted, or surfaced with an exterior finish system.

Limitations

DensGlass Sheathing is resistant to normal weather conditions, but it is not intended for immersion in water. Cascading roof/floor water should be directed away from the sheathing until appropriate drainage is installed.

Avoid any condition that will create moisture in the air and condensation on DensGlass Sheathing. The use of forced air heaters creates volumes of water vapor which, when not properly vented, can condense on building materials. The use of these heaters and any resulting damage is not the responsibility of Georgia-Pacific Gypsum. Consult heater manufacturer for proper use and ventilation.

When DensGlass Sheathing panels are used in slanted wall applications, that portion of the wall must be temporarily protected from the elements. Do not allow water to pond or settle on sheathing. Also, exposed wall ends must be covered to prevent water from infiltrating the cavity.

Georgia-Pacific Gypsum does not warrant and is not responsible or liable for the performance of the cladding or exterior systems applied over DensGlass Sheathing. The suitability and compatibility of any system is the responsibility of the system manufacturer or design authority.

Do not laminate masonry surfaces to DensGlass Sheathing; use furring strips or framing.

DensGlass Sheathing is not intended for roof applications. For roof applications, consult our DensDeck® Roof Board brochure.

DensGlass Sheathing is not intended for interior or exterior tile applications. For interior tile applications, consult our DensShield® Tile Backer brochure.

DensGlass Sheathing should not be used in lieu of plywood where required.

Do not apply DensGlass Sheathing below grade.

For all installations, design details such as fasteners, sealants and control joints per system specifications must be properly installed. Openings and penetrations must be properly flashed and sealed. Failure to do so will void the warranty.

Do not use DensGlass Sheathing as a base for nailing or mechanical fastening. Fasteners should be flush to the face of the board, not countersunk.

Technical Data

DensGlass Sheathing is noncombustible as described and tested in accordance with ASTM E136 or CAN/ULC S114.

DensGlass Sheathing exceeds ASTM C1396 sheathing standards for humidified deflection by a factor of 10 in tests over the standard for regular gypsum sheathing.

5/8" (15.9 mm) DensGlass® Fireguard® Sheathing is UL and ULC classified **Type DGG**.

DensGlass Sheathing is manufactured to meet ASTM C1177.

Flame spread and smoke develop rating of 0/0 when tested in accordance with ASTM E84 or CAN/ULC S102.

Handling and Use—CAUTION

This product contains fiberglass facings which may cause skin irritation. Dust and fibers produced during the handling and installation of the product may cause skin, eye and respiratory tract irritation. Avoid breathing dust and minimize contact with skin and eyes. Wear long sleeve shirts, long pants and eye protection. Always maintain adequate ventilation. Use a dust mask or NIOSH/MSHA approved respirator as appropriate in dusty or poorly ventilated areas.

Safety Data Sheet (SDS) is available at www.buildgp.com/safetyinfo or call 1-404-652-5119.

Product Data

Thicknesses: 1/2" (12.7 mm); 5/8" (15.9 mm) is Type X (ASTM C1177)

Width: 4' (1220 mm) standard, tolerance up to ± 1/8" (3.2 mm)

Lengths: 8' (2438 mm), 9' (2743 mm) or 10' (3048 mm) standard

Edges: Square

* For complete warranty details, visit www.gpgypsum.com.

continued →

Submittal Approvals

Job Name _____

Contractor _____

Date _____

Physical Properties

Properties	1/2" (12.7 mm) DensGlass® Sheathing	5/8" (15.9 mm) DensGlass® Fireguard® Sheathing
Width, nominal	4' (1219 mm) ± 1/8" (3 mm)	4' (1219 mm) ± 1/8" (3 mm)
Length, standard	8' (2440 mm), 9' (2743 mm), 10' (3048 mm), ± 1/4" (6 mm)	8' (2440 mm), 9' (2743 mm), 10' (3048 mm), ± 1/4" (6 mm)
Weight, nominal, lbs./sq. ft. (Kg/m ²)	1.9 (9)	2.5 (12)
Edges	Square	Square
Bending radius ⁵	6' (1829 mm)	8' (2438 mm)
Racking strength ⁶ , lbs./ft. (dry) (N/m), Ultimate—not design value	>540 (7878)	>654 (9544)
Flexural strength ^{1,4} , parallel, lbf. (N), 4' weak direction	≥80 (356)	≥100 (445)
Compressive strength	min. 500 psi (3445 kPa)	min. 500 psi (3445 kPa)
Humidified deflection ^{1,4}	<2/8" (6 mm)	<1/8" (3 mm)
Permeance ² , perms (ng/Pa•s•m ²)	>23 (1300)	>17 (970)
R Value ³ , ft ² •°F•hr/BTU (m ² •K/W)	.56 (0.099)	.67 (0.118)
Combustibility ⁷	Noncombustible	Noncombustible
Linear expansion with moisture change, in/in %RH (mm/mm %RH) ⁸	6.25 x 10 ⁻⁶	6.25 x 10 ⁻⁶
Surface burning characteristics per ASTM E84 or CAN/ULC S102: flame spread/smoke developed	0/0	0/0
Coefficient of thermal expansion, in/in/°F (mm/mm/°C)	8.5 x 10 ⁻⁶ (15.3 x 10 ⁻⁶) ⁹	8.5 x 10 ⁻⁶ (15.3 x 10 ⁻⁶) ⁹

¹ Tested in accordance with ASTM C473

² Tested in accordance with ASTM E96 (dry cup method)

³ Tested in accordance with ASTM C518 (heat flow meter)

⁴ Specified values per ASTM C1177

⁵ Double fasteners on ends as needed

⁶ Tested in accordance with ASTM E72

⁷ As defined and tested in accordance with ASTM E136 or CAN/ULC S114

⁸ As stated by Gypsum Association GA-235

⁹ Tested in accordance with ASTM E228-85



U.S.A. Georgia-Pacific Gypsum LLC

SALES INFORMATION AND ORDER PLACEMENT

U.S.A. West: **1-800-824-7503**
 Midwest: **1-800-876-4746**
 South Central: **1-800-231-6060**
 Southeast: **1-800-327-2344**
 Northeast: **1-800-947-4497**

CANADA Canada Toll Free: **1-800-387-6823**
 Quebec Toll Free: **1-800-361-0486**

TECHNICAL INFORMATION

U.S.A. and Canada: **1-800-225-6119**, www.gpgypsum.com

TRADEMARKS Unless otherwise noted, all trademarks are owned by or licensed to Georgia-Pacific Gypsum LLC.

WARRANTIES, REMEDIES AND TERMS OF SALE For current warranty information for this product, please go to www.gpgypsum.com and select the product for warranty information. All sales of this product by Georgia-Pacific are subject to our Terms of Sale available at www.gpgypsum.com.

UPDATES AND CURRENT INFORMATION The information in this document may change without notice. Visit our website at www.gpgypsum.com for updates and current information.

CAUTION For product fire, safety and use information, go to www.buildgp.com/safetyinfo or call 1-800-225-6119.

FIRE SAFETY CAUTION Passing a fire test in a controlled laboratory setting and/or certifying or labeling a product as having a one-hour, two-hour, or any other fire resistance or protection rating and, therefore, as acceptable for use in certain fire rated assemblies/systems, does not mean that either a particular assembly/system incorporating the product, or any given piece of the product itself, will necessarily provide one-hour fire resistance, two-hour fire resistance, or any other specified fire resistance or protection in an actual fire. In the event of an actual fire, you should immediately take any and all actions necessary for your safety and the safety of others without regard for any fire rating of any product or assembly/system.



Preblended Scratch, Brown & Finish Stucco AMX 700 SBF

Product # AMX 700 SBF



1. PRODUCT NAME

Amerimix Scratch, Brown & Finish Stucco - AMX 700 SBF

2. PRODUCT DESCRIPTION

Amerimix Scratch, Brown & Finish Stucco - AMX 700 SBF is a portland based, factory blend of sand, cement and proprietary chemical additives. AMX 700 SBF may be used for a variety of wall assemblies. The aggregates and mix design for AMX 700 SBF are specifically formulated to meet the requirements of two and three coat applications over solid plaster bases (unit masonry, precast/cast-in-place concrete) per Table 4 of ASTM 926.

Feature and Benefits

- Factory blended under controlled conditions for mix consistency
- Outstanding workability for smooth spreading and quality finish

Uses

- Interior or exterior applications
- Stucco scratch, brown and finish coats
- Two or three coat system applications
- Application over lath

Packaging

Available in 80 lb (36.3 kg) bags or bulk bags.

Approximate Coverage

One 80 lb bag yields approximately 9 - 10 ft² (.84 - .92 m²) at 3/4" (19.1 mm) thick, 13 - 15 ft² (1.2 - 1.4 m²) at 1/2" (12.7 mm) thick.

Limitations

1. The optimal temperature range for stucco application is between 40°F (4°C) and 90°F (32°C). Application outside of this range is possible when appropriate precautions for cold or hot weather construction are implemented in compliance with ACI, PCA, ASTM, IMIAC, or Masonry Institute standards.
2. Agitate material as necessary within its working time to maintain workability.
3. Do not add materials other than clean potable water.
4. Water with a high mineral salt content can cause efflorescence. Efflorescence occurs naturally and is beyond the control of Amerimix.
5. Avoid adding excessive amounts of water as this promotes segregation, loss of strength or loss of durability.
6. Shelf life is not to exceed one year from date of manufacture.

NOTE: Amerimix Scratch, Brown & Finish Stucco -AMX 700 SBF should be installed in accordance with the provisions of applicable ASTM standards and the local building code. Always follow traditional industry best practices appropriate for the application and weather conditions. Good workmanship in conjunction with proper design and detailing assures durable, efficient, watertight construction.

Safety

READ THE SAFETY DATA SHEET (SDS) BEFORE USING THIS PRODUCT. SDS Sheets are available on our website Amerimix.com or contact CHEMTREC (24 hours availability) 800-424-9300 for International inquiries +01-703527-3887, or contact Amerimix Technical Services at 888-313-0755.

3. TECHNICAL DATA

Applicable Standards

ASTM International (ASTM)

- ASTM C91 Standard Specification for Masonry Cement
- ASTM C109 Standard Test Method for Compressive Strength of Hydraulic Cement Mortars
- ASTM C150 Standard Specification for Portland Cement
- ASTM C897 Standard Specification for Aggregate for Job-Mixed Portland Cement Based Plaster
- ASTM C926 Standard Specification for Application of Portland Cement Based Plaster
- ASTM C1328 Standard Specification for Plastic Cement

International Masonry Industry All-Weather Council (IMIAC)

- Recommended Practices and Guide Specifications for Cold Weather Masonry Construction
- Recommended Practices and Guide Specifications for Hot Weather Masonry Construction

Sustainability

Amerimix products generally qualify for LEED Materials and Resources credits for Recycled Materials and Regional Materials. Visit www.amerimix.com or contact Technical Services for additional information regarding LEED qualifications for your specific product application and project location.

4. INSTALLATION

Preparation

- Remove all loose particles, dirt, dust or any foreign materials that would inhibit proper bonding to substrate.
- Certain conditions may require the substrate to be SSD (saturated surface dry) conditioned such as dry windy climates, porous substrates or high temperatures.
- Lath must be installed per ASTM C1063.

Job Mock Up

Amerimix requires that when Amerimix Scratch, Brown & Finish Stucco- AMX 700 SBF is used in any application or as part of any system that includes other manufacturers' products, the contractor and/or design professional shall test all the system components collectively for compatibility, performance and long-term intended use in accordance with pertinent and accepted industry standards prior to any construction. Written documentation of the test performed shall be satisfactory to the design professional and contractor. Test results must include the means and methods of application, products used, project-specific conditions being addressed, and standardized tests performed for each proposed system or variation. Approved mock ups or sample panels should be retained until completion of the project.

Mixing

1. Use of a mechanical mixer will help ensure more uniform mix.
2. Use approximately 1.5 gal (5.7 L) of clean potable water per 80 lb (36.3 kg) bag. Pour approximately 3/4 of the water into the mixer. For mixing from a silo, use the same approximate water ratio and follow the same procedures.
3. With the mixer running, add bags of dry stucco and mix thoroughly.
4. A minimum of 5 minutes mixing time is recommended.
5. Add additional water in small amounts as necessary to achieve optimum consistency and workability. Mix for a minimum of 5 minutes adding enough of the remaining water to achieve a fluid workable consistency. Caution: Adding too much water will reduce strength.
6. Let mix stand for 2 minutes to enable absorption of water and re-mix.
7. Addition of cold water at high temperatures or warm water at low temperatures will aid in adjusting the set time.

Performance Recommendations

Only water lost to evaporation should be replaced by re-tempering, not water lost to hydration.

Curing

Loss of surface water may occur quickly due to higher ambient air temperatures and wind conditions. Moist cure walls for 48 hours after application. Protect from rain and freezing for 24 hours.

Cleaning

Use water to clean all tools immediately after use. Dried material must be mechanically removed. Only clean potable water should be used in the cleaning process.

5. AVAILABILITY

Amerimix products are available throughout the U.S. and Canada.

For information please contact Amerimix at

Toll Free: 888-313-0755

Website: Amerimix.com

6. TECHNICAL SUPPORT

For technical assistance please contact us

Toll Free: 888-313-0755

7. WARRANTY

LIMITED WARRANTY

What Does This Warranty Cover? Amerimix warrants that this product will (a) be free from defects in material and workmanship, and (b) conform to specifications set forth in Bonsal American's product literature at the time of manufacturer.

How Long Does Coverage Last? This warranty lasts for a period of one (1) year from the date of purchase. ANY IMPLIED WARRANTY OF MERCHANTABILITY OR FITNESS FOR A PARTICULAR PURPOSE IS LIMITED TO THE DURATION OF THIS EXPRESS WARRANTY. Some states do not allow limitations on how long an implied warranty lasts, so the above limitation may not apply to you.

What Will Amerimix Do to Address Problems? Amerimix will replace the defective product or refund the purchase price, at its option.

What Does This Warranty Not Cover? Amerimix will not be liable for damage or loss resulting from a failure to store, use, install or maintain the product in strict accordance with Amerimix's specifications and instructions. In no event will Amerimix be liable for damages in excess of the purchase price for the product. CONSEQUENTIAL, SPECIAL AND INCIDENTAL DAMAGES ARE NOT RECOVERABLE UNDER THIS WARRANTY. Some states do not allow the exclusion or limitation of incidental or consequential damages, so the above limitation or exclusion may not apply to you.

How Do I Get Warranty Service? Within thirty (30) days after discovering a defect in the product, contact Amerimix in writing at the following address:

Amerimix
Technical Support Group
Charlotte, NC 28217

Include with your letter a brief description of the problem and any sales receipt, invoice or other proof of the date of purchase. To obtain Amerimix's technical or sales literature, please call (888)313-0755 or visit our web site at amerimix.com.

How Does State Law Relate to This Warranty? This warranty gives you specific legal rights, and you may also have other rights which vary from state to state.

WARNING - INJURIOUS TO EYES. CAUSES SKIN IRRITATION.

This product contains portland cement and silica sand. Avoid contact with eyes and skin. Do not take internally. Crystalline silica sand may cause serious lung problems. Avoid breathing dust and wear a respirator in dusty areas. Contact with wet unhardened concrete, mortar, cement or cement mixtures can cause skin irritation, severe chemical burns or serious eye damage. Wear waterproof gloves, a fully buttoned long-sleeved shirt, full-length trousers and tight fitting safety goggles. If you have to stand in wet product, wear waterproof boots high enough to keep product from getting inside. If working on hands and knees, wear kneepads. Indirect contact through clothing can be as serious as direct contact. Promptly, rinse out wet product from clothing.

California Proposition 65: This product contains Crystalline Silica, Quartz and may also contain trace amounts of other chemicals known to the State of California to cause cancer, birth defects or other reproductive harm.

KEEP OUT OF THE REACH OF CHILDREN AND ANIMALS.

FIRST AID: Eye Contact: Flood eyes with water for at least 15 minutes and consult a physician immediately. DO NOT RUB EYES. Skin Contact: Wash exposed skin area with soap and water. Consult a physician if irritation persists. Inhalation: Remove to fresh air. Ingestion: Immediately consult a physician.

For additional information, call Amerimix at 888-313-0755 or CHEMTREC at 800-424-9300 or 703-527-3887 outside of the USA. Refer to Safety Data Sheet (SDS) for further information.

ENVIRONMENTAL ADVISORY: Uncured or crushed cured cement is an environmental hazard, which may adversely affect fish and wildlife. Dispose of construction debris containing cement, including empty bags, at a permitted municipal disposal firm. Do not use crushed concrete as a fill near an aquatic habitat.

Courtyard COLLECTION[®]



Insulated steel construction, fashioned to resemble the elegant wood designs of traditional carriage house doors.

The Genuine. The Original.





Courtyard Collection® doors give you the beauty of wood with the durability of steel. Each model provides varied design options to complement any home.



Image above: Model 7560, Panel X (167T) Brown finish, Stockbridge windows, decorative hardware
Cover image: Model 7560, Panel H (161A), White finish, Stockton windows, decorative hardware

Built Better from the Inside Out

Door construction

Our Courtyard Collection® doors are made with an insulated steel construction and fashioned to resemble the elegant wood designs of traditional carriage house doors.



Foamed-in-place polyurethane insulation with an R-value* of 12.76 and U-factor up to 0.24 helps control costly heat loss and gain. This type of insulation can diminish street noise and provides for quieter door operation.



Quiet operation – Commercial grade track and hardware featuring durable 13 ball bearing rollers is standard for Model 7560 and is an optional upgrade for Model 7520. Residential track and 11 ball bearing rollers is standard for Model 7520.



In-between section thermal seals With an air infiltration rating as low as .08 cfm, these seals help to provide superior resistance to the elements.

Wind load-rated door (Optional on Model 7560). Safeguard your home in extreme wind conditions. Wind load rating means your home can be built to withstand a variety of wind conditions and meet your local building codes.



Weather resistant – Wood grain textured trim boards are resistant to dents and the elements.

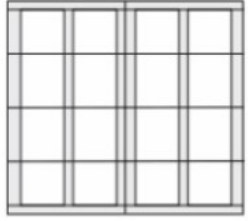
High cycle spring option – Choose a 25,000 cycle spring for almost twice the life of a torsion spring.

*Overhead Door Corporation uses a calculated door section R-value for our insulated doors.

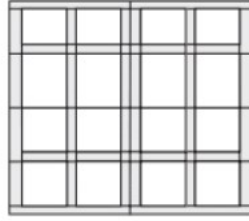


Model 7560, Panel C5 (163T) White finish, Stockbridge windows, decorative hardware

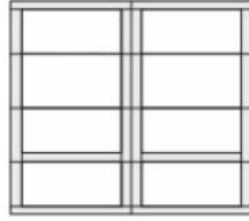
Models 7560



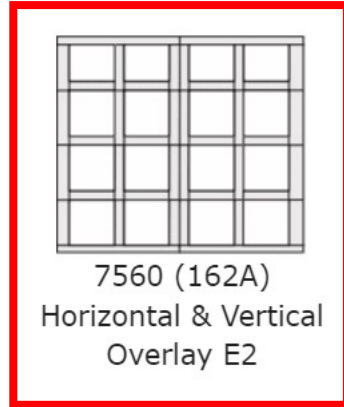
7560 (162Z)
Vertical
Overlay C2



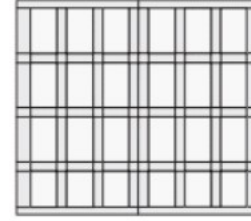
7560 (162E)
Vertical
Overlay C4



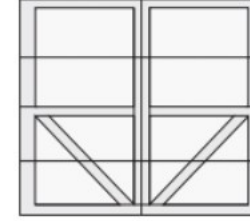
7560 (161B)
Horizontal
Overlays H3



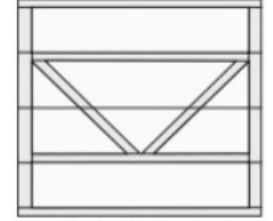
7560 (162A)
Horizontal & Vertical
Overlay E2



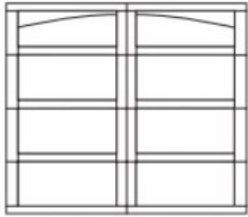
7560 (164A)
Horizontal & Vertical
Overlays E3



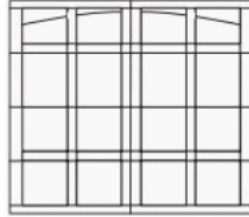
7560 (166B)
V Shaped
Overlay V2



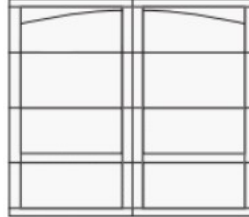
7560 (166E)
V Shaped
Overlay V2



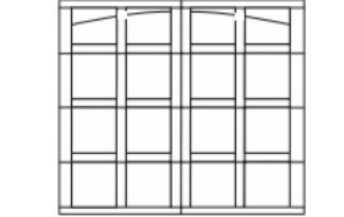
7560 (162ZT)
Vertical
Overlays C2



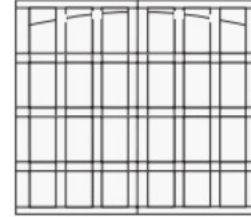
7560 (162E)
Vertical
Overlays C4



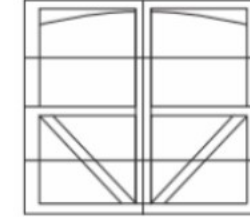
7560 (161B)
Horizontal
Overlays H3



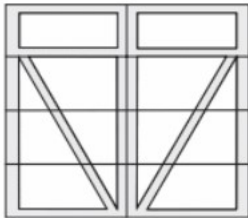
7560 (162A)
Horizontal & Vertical
Overlay E2



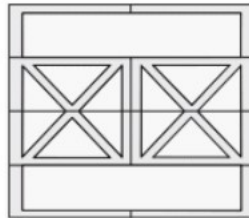
7560 (164A)
Horizontal & Vertical
Overlay E3



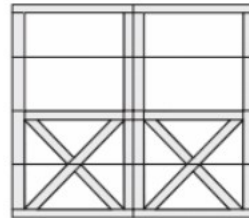
7560 (166B)
V Shaped
Overlays V2



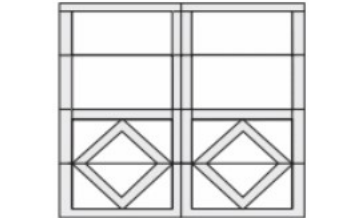
7560 (166T)
V Shaped
Overlay V



7560 (167E)
Diagonal
Overlay C4



7560 (167B)
Diagonal
Overlay X2



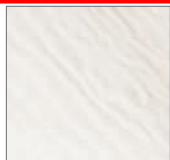
7560 (168B)
Vertical
Overlay D

Courtyard COLLECTION®
Door Designs

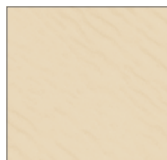
Select your color and windows

2 Choose a color

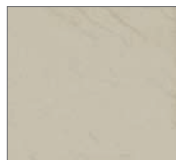
Painted finishes



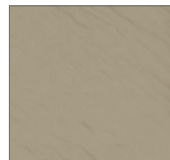
White



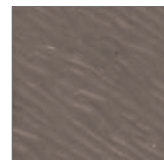
Almond



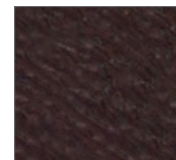
Desert Tan



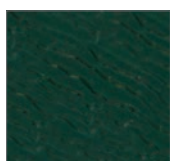
Sandstone



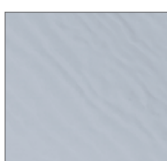
Terra Bronze*



Brown*



Hunter Green*



Gray*



Black*

Actual colors may vary from brochure due to fluctuations in the printing process. **Always request a color sample from your Distributor for accurate color matching before ordering your door.**

*Available on Model 7560 only

3 Choose a window style

Wind load-rated windows are offered only for Models 7560. Windows not available on V1, X1 panels or 12' doors.



Clear Long



Stockbridge



Stockton



Stockton Arch



Somerton



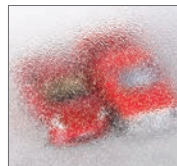
Wyndbridge

Choose a glass type

Models 7520 available with single pane glass only. Models 7560 available with insulated glass.



Clear



Obscure

Actual glass may vary from brochure photos due to fluctuations in the printing process. Check with your Overhead Door™ Distributor to view a glass sample.