



Frame

- Frame is Duracast® fiberglass composite – five-layer pultruded fiberglass material [with optional foam insulation₁], reinforced with a Pella® patented interlocking mat.
- Overall frame depth is 3-1/4".
- Nominal wall thickness of Duracast fiberglass composite members is .050" to .090" thick.
- Frame corners are mitered, joined and bonded with corner lock and injected sealant.
- Jambs contain factory-drilled (counter-bored) installation screw holes on block frame and flush flange only.

Sash

- Sash is Duracast fiberglass composite – five-layer pultruded fiberglass material, reinforced with a Pella patented interlocking mat.
- All sash members have mitered corners bonded with corner lock and sealed with injected sealant.

Exterior / Interior

- Frame Interior cover made from a proprietary blend of mineral filled polyvinyl chloride (PVC) with an acrylic cap that matches the interior color of the product.
 - Duracast fiberglass composite surfaces with powder-coat paint finish.
 - Color is [White] [Brown] [Black].
- or -
- Dual-color option [Brown] [Black] exterior with White interior₂.

Glazing System

- Quality float glass complying with ASTM C 1036.
 - 11/16" dual-pane insulating glass [annealed] [tempered] [obscure₃] [clear] [[Advanced] [SunDefense™] [AdvancedComfort] [NaturalSun] Low-E coated, [with argon]] [[bronze] [gray] [green] Advanced Low-E [with Argon]] sealed and bonded to sash.
- or -
- 1" Triple-pane insulating glass [annealed] [tempered] [obscure₃] [clear] [[Advanced] [SunDefense™] [AdvancedComfort] [NaturalSun] Low-E coated, [with argon]] [[bronze] [gray] [green] Advanced Low-E [with Argon]] sealed and bonded to sash.
 - High altitude glazing available.

Dual Weatherstripping

- Continuous, flexible ThermoPlastic Vulcanizate material in dual durometer design, compressed between frame and sash for positive seal on all four sides.
- Secondary ThermoPlastic Vulcanizate leaf-type weatherstrip between edge of sash and frame.

Hardware

- Easy-Slide operator assembly
 - Hardened nickel-coated Steel worm and wheel gears, 5 ball bearings.
 - Zinc-magnesium alloy hub and gearbox housing with a corrosion-protecting ultra-clear finish.
 - Stainless steel swing arm and hinge pin for extra corrosion protection of exposed components.
 - Kevlar-reinforced drive belt.
 - Harsh environment approved – ASTM B117 salt chamber and debris cycling, 20,000 life cycle test approved.
- Optional Easy-Slide operator with Accessibility Lock Lever assembly.
 - 6" elongated lock lever.
 - 5 lb operational forces available on sizes when FW is ≤ 59.5" and FH is ≤ 59.5".

- or -

- Roto operator assembly
 - Steel worm gear sash operator with hardened gears.
 - Operator base is zinc die cast with painted finish.
 - Operator linkage is 300 series stainless steel.
 - Exposed fasteners are stainless steel.
 - Hardware will exceed 1,000 hours salt spray exposure per ASTM B 117.
 - Hinge slide and hinge arms are 300 series stainless steel.
- Finish of integrated fold-away crank is [[baked enamel [White] [Brown] [Matte Black]] [Satin Nickel (roto operator only)].
- All vent units are available with operator located on the sill.
- Lock handle finish is [[baked enamel [White] [Brown] [Matte Black]] [Satin Nickel (roto operator only)].

Optional Products

Screens

- InView™ screens
 - Vinyl-coated 18/18 mesh fiberglass screen cloth complying with SMA 1201, set in aluminum frame fitted to inside of window, supplied complete with all necessary hardware.
 - Screen frame finish is baked enamel, color to match interior.

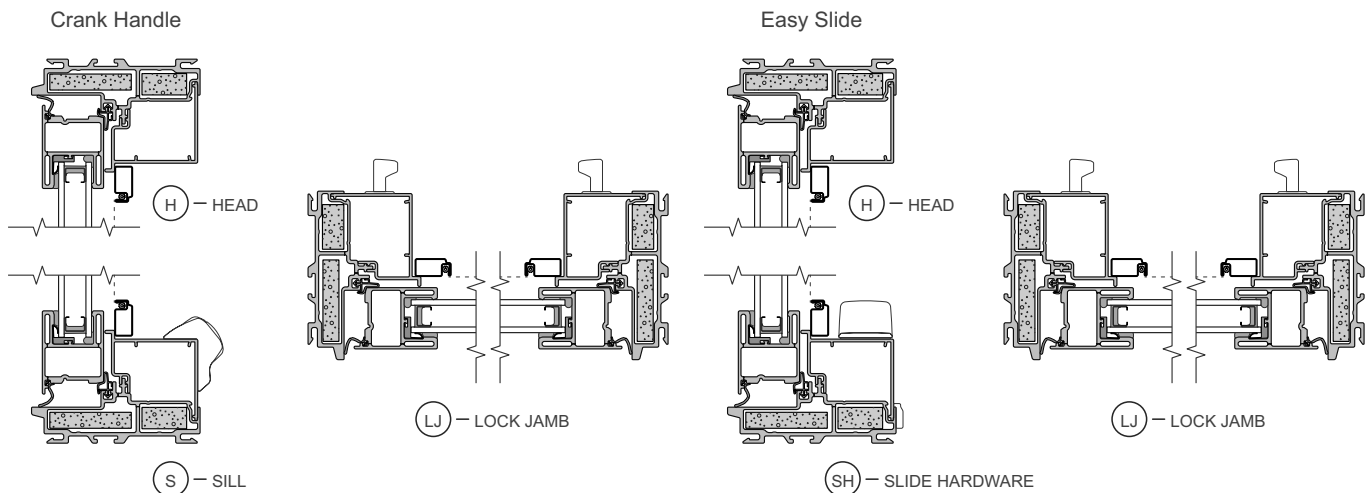
Grilles

- Grilles-Between-the-Glass
 - Insulating glass contains 3/4" contoured aluminum grilles permanently installed between two panes of glass.
 - Grilles are factory prefinished [White] [Brown] [Black] to match interior and exterior finish.

Hardware

- Optional limited opening hardware available for vent units in stainless steel; nominal 3" opening.

Foam Insulation Inserts₁

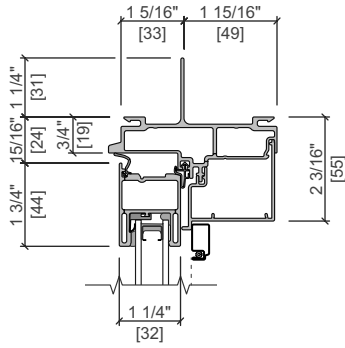


(1) Foam insulation inserts are not available with clear glazing. (2) Dual-color finish is not available on products with integral nailing fin. (3) Obscure glazing is not available when AdvancedComfort Low-E coated IG is specified.

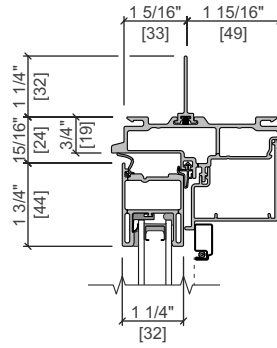


NEW CONSTRUCTION FRAME

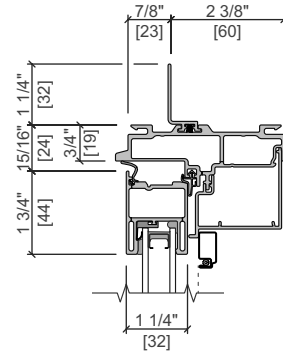
Integral Nailing Fin



Standard Block Frame with Standard Fin

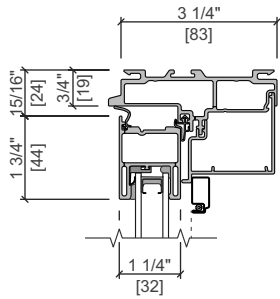


Standard Block Frame with Off Set Fin



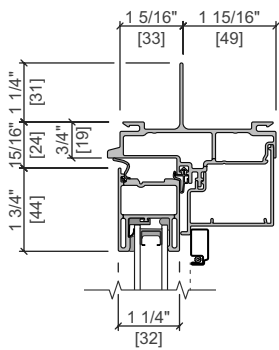
REPLACEMENT FRAME

Standard Block Frame

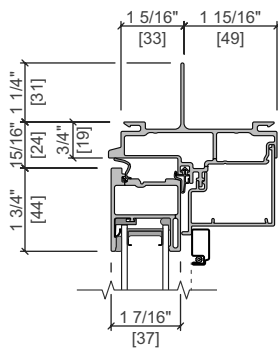


GLAZING OPTIONS

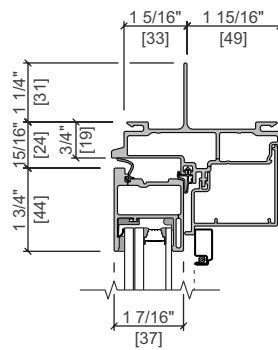
1 1/16" IG



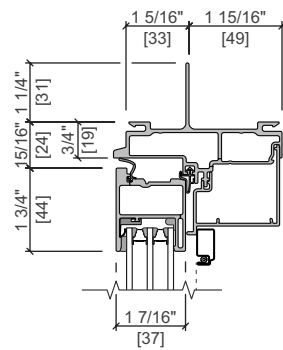
1" IG



1" Sound IG

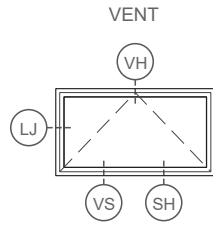


1" Triple IG

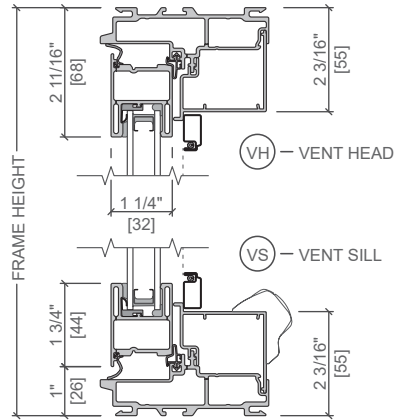


Scale 3" = 1' 0"

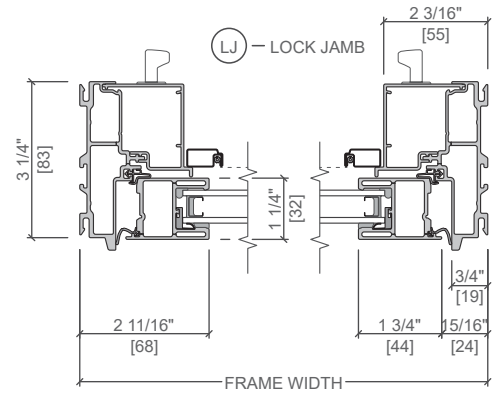
All dimensions are approximate.



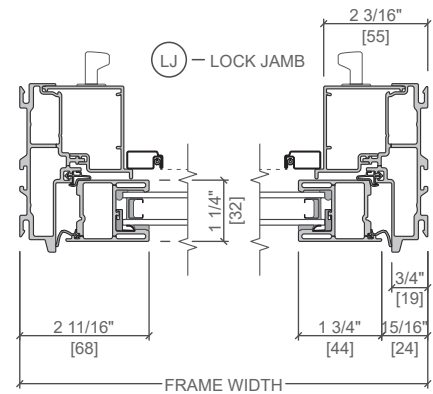
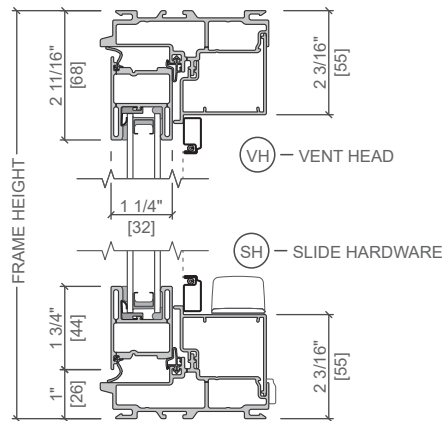
VENT



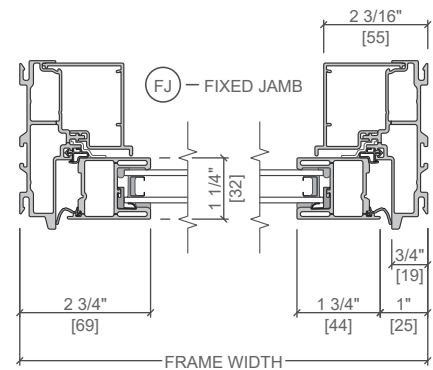
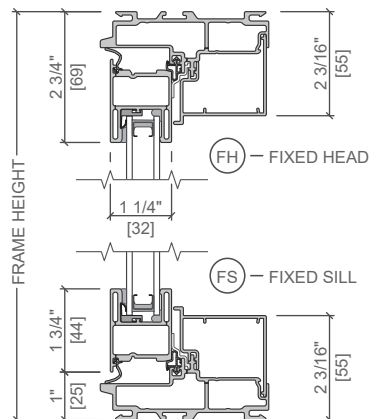
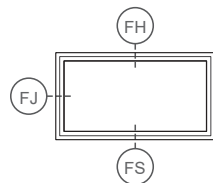
CRANK HARDWARE



EASY SLIDE HARDWARE

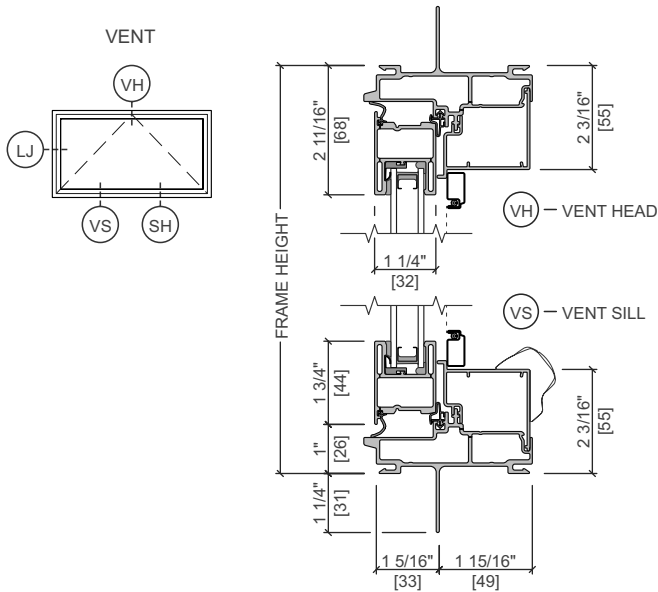


FIXED

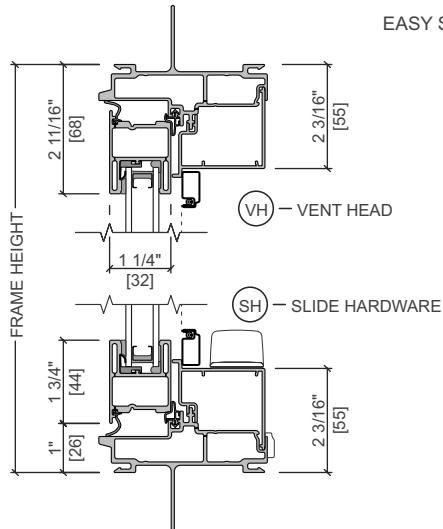
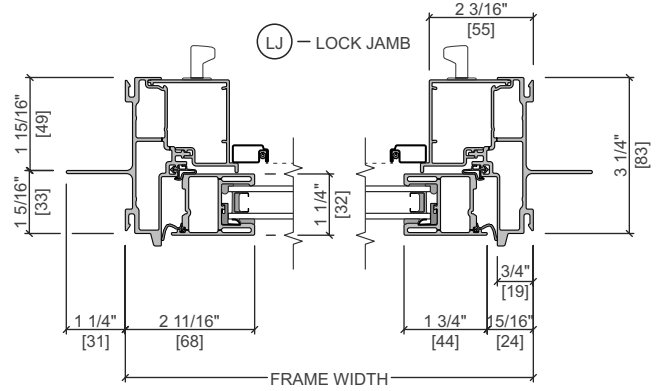


Scale 3" = 1' 0"

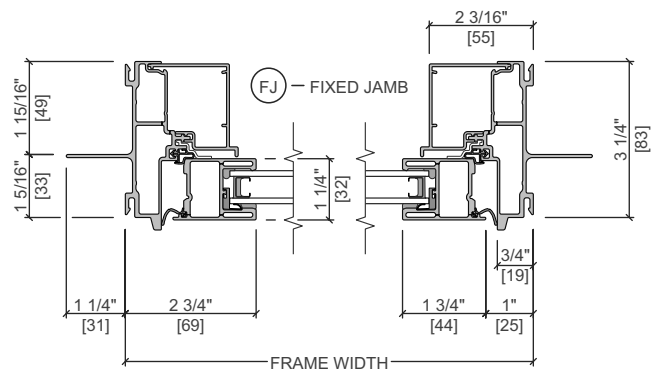
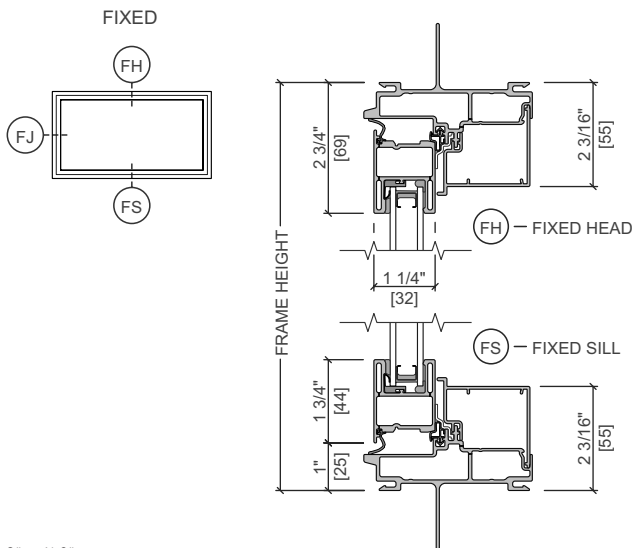
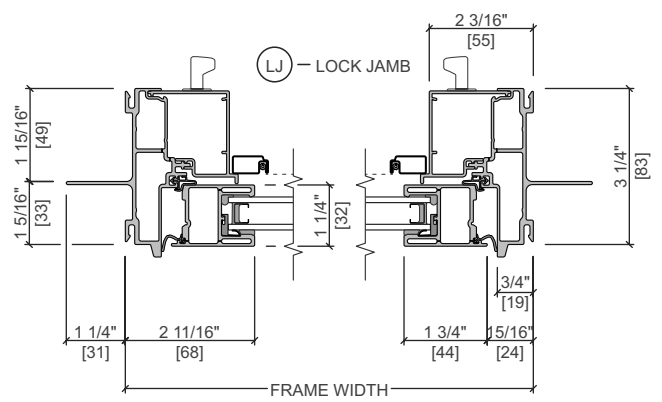
All dimensions are approximate.



CRANK HARDWARE



EASY SLIDE HARDWARE



Scale 3" = 1' 0"

All dimensions are approximate.