

# Historic District Commission Application



Figure #1: Exterior, Primary Façade. 5/15/22

## **1133 Griswold Building** Detroit, MI

# Historic District Commission Application



Figure #2: Exterior, Primary Façade. 5/15/22

## **1133 Griswold Building** Detroit, MI

# Historic District Commission Application



Figure #3: Exterior, Primary Façade. 2/8/23



Figure #4: Exterior, Primary Façade. 2/8/23

## 1133 Griswold Building Detroit, MI

# Historic District Commission Application



Figure #5: Exterior, Alley Façade. 8/4/22



Figure #6: Exterior, Alley Façade. 8/4/22

## 1133 Griswold Building Detroit, MI



Figure #7: Exterior, Alley Façade. 12/7/21

**1133 Griswold Building**  
Detroit, MI

# Historic District Commission Application



Figure #8: Exterior, Alley Façade. 8/4/22

## **1133 Griswold Building** Detroit, MI

# Historic District Commission Application



Figure #9: Exterior, Alley Façade. 8/4/22

## **1133 Griswold Building** Detroit, MI

# Historic District Commission Application



Figure #10: Exterior, Primary Façade. 11/18/21

## **1133 Griswold Building** Detroit, MI



# Historic District Commission Application



Figure #11: Exterior, Roof. 11/18/21



Figure #12: Exterior, Roof. 8/4/22

## 1133 Griswold Building Detroit, MI

# Historic District Commission Application



Figure #13: Exterior, Roof. 12/7/21



Figure #14: Exterior, Roof. 12/7/21

## 1133 Griswold Building Detroit, MI



Figure #15: Looking at the east façade of 1145 Griswold. 12/7/21

**1133 Griswold Building**  
Detroit, MI



Figure #16: Exterior, Looking at the South Façade of 1145 Griswold. 12/7/21

**1133 Griswold Building**  
Detroit, MI

# Historic District Commission Application



Figure #17: Exterior, Primary Façade and Alley. 12/20/22

## **1133 Griswold Building** Detroit, MI

# Historic District Commission Application



Figure #18: Interior, Alley Window condition. 8/4/22



Figure #19: Interior, Alley Window Condition. 8/4/22

## 1133 Griswold Building Detroit, MI

# Historic District Commission Application

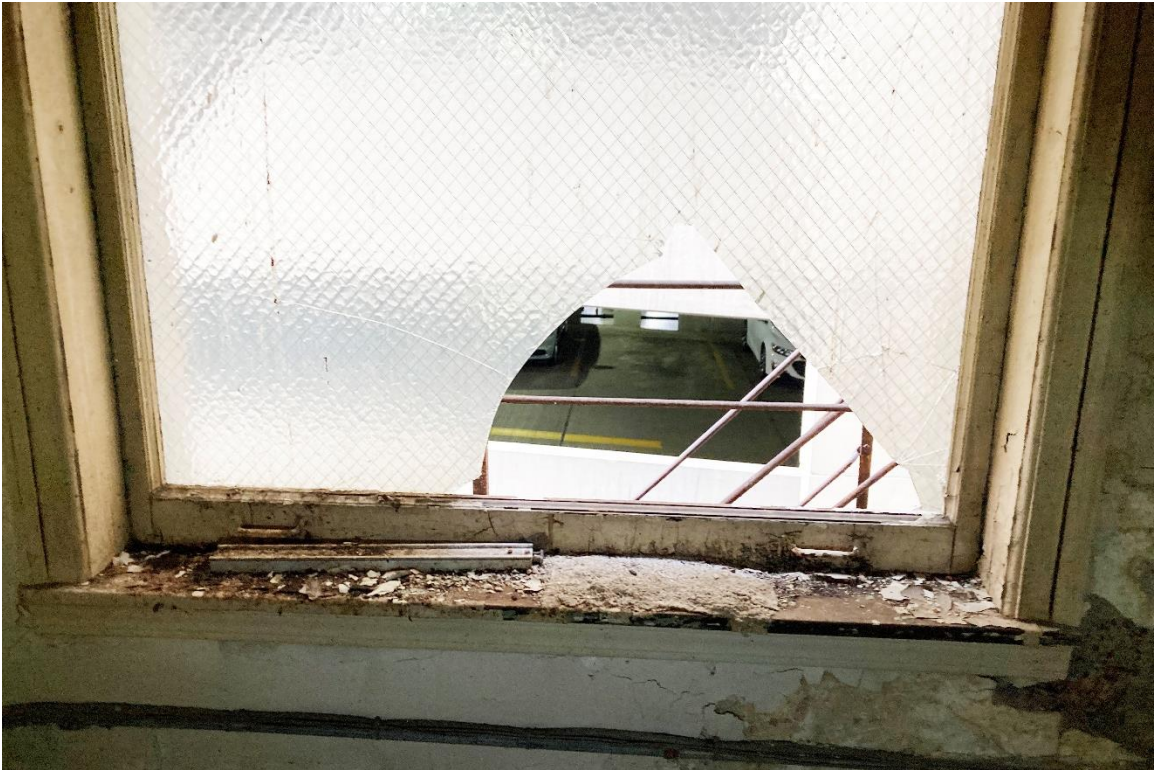


Figure #20: Interior, Alley Window Condition. 8/4/22



Figure #21: Interior, Alley Window Condition. 8/4/22

## 1133 Griswold Building Detroit, MI

# Historic District Commission Application



Figure #22: Interior, Hatch to view portion of façade. 3/9/22

## **1133 Griswold Building** Detroit, MI



# Historic District Commission Application



Figure #23: Interior, Looking into hatch at CMU structure with no limestone visible. 3/9/22

## **1133 Griswold Building** Detroit, MI

Historic District Commission Application



Figure #24: Interior, Looking into hatch with no limestone visible. 3/9/22

**1133 Griswold Building**  
Detroit, MI

# Historic District Commission Application



Figure #25: Historic photo, Looking at Alley Façade. 2007

## 1133 Griswold Building Detroit, MI

# Historic District Commission Application



Figure #26: Historic Photo, 1930s

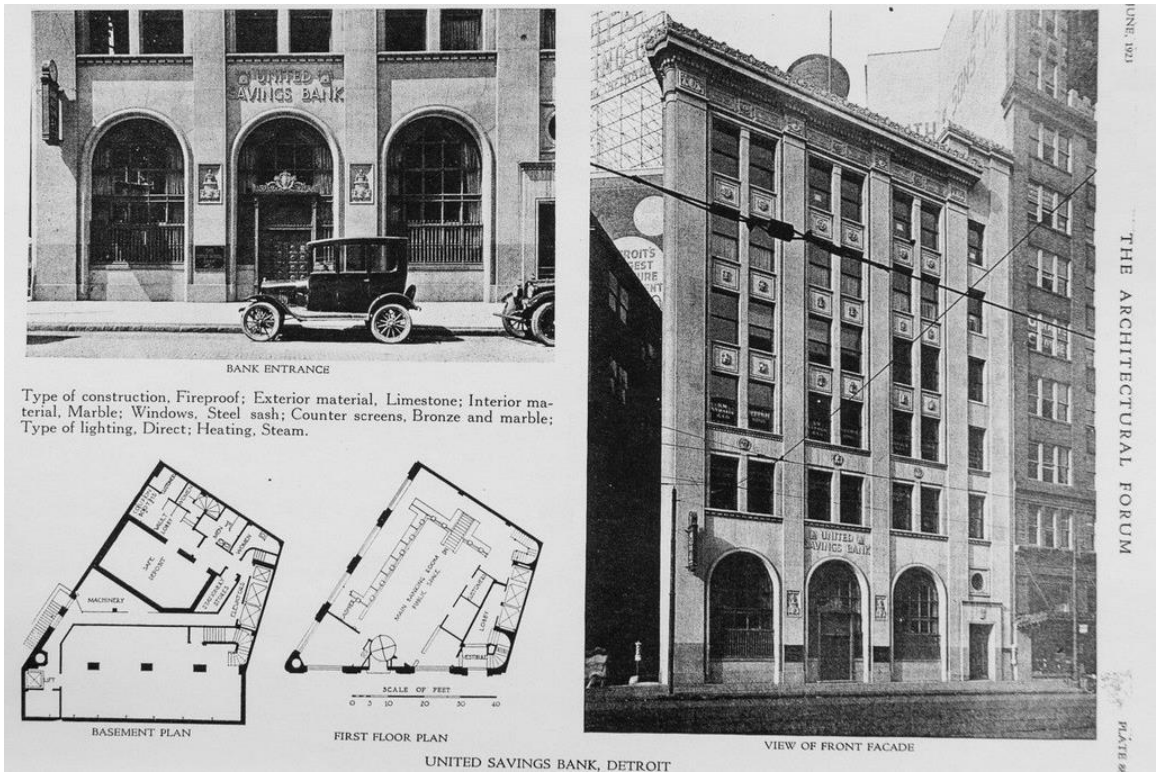


Figure #27: Historic Photo, 1923

## 1133 Griswold Building Detroit, MI

# Historic District Commission Application



Figure #28: Historic photo, 1921

## **1133 Griswold Building** Detroit, MI

# Historic District Commission Application



Figure #29: Historic Photo, 1972



Figure #30: Historic Photo, 1986

## 1133 Griswold Building Detroit, MI

# Historic District Commission Application

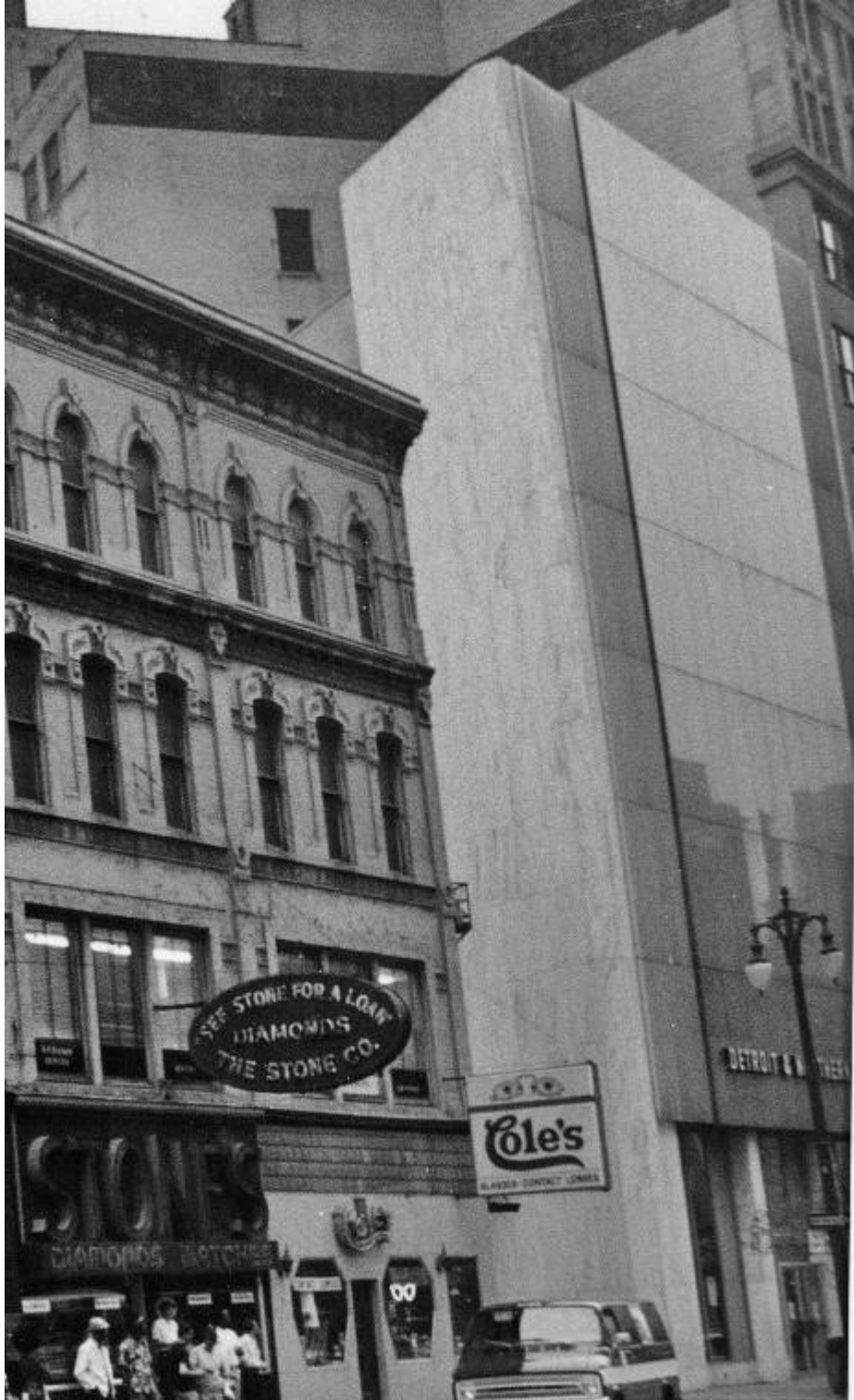


Figure #31: Historic Photo from 1972 zoomed in.

## 1133 Griswold Building Detroit, MI

# Historic District Commission Application

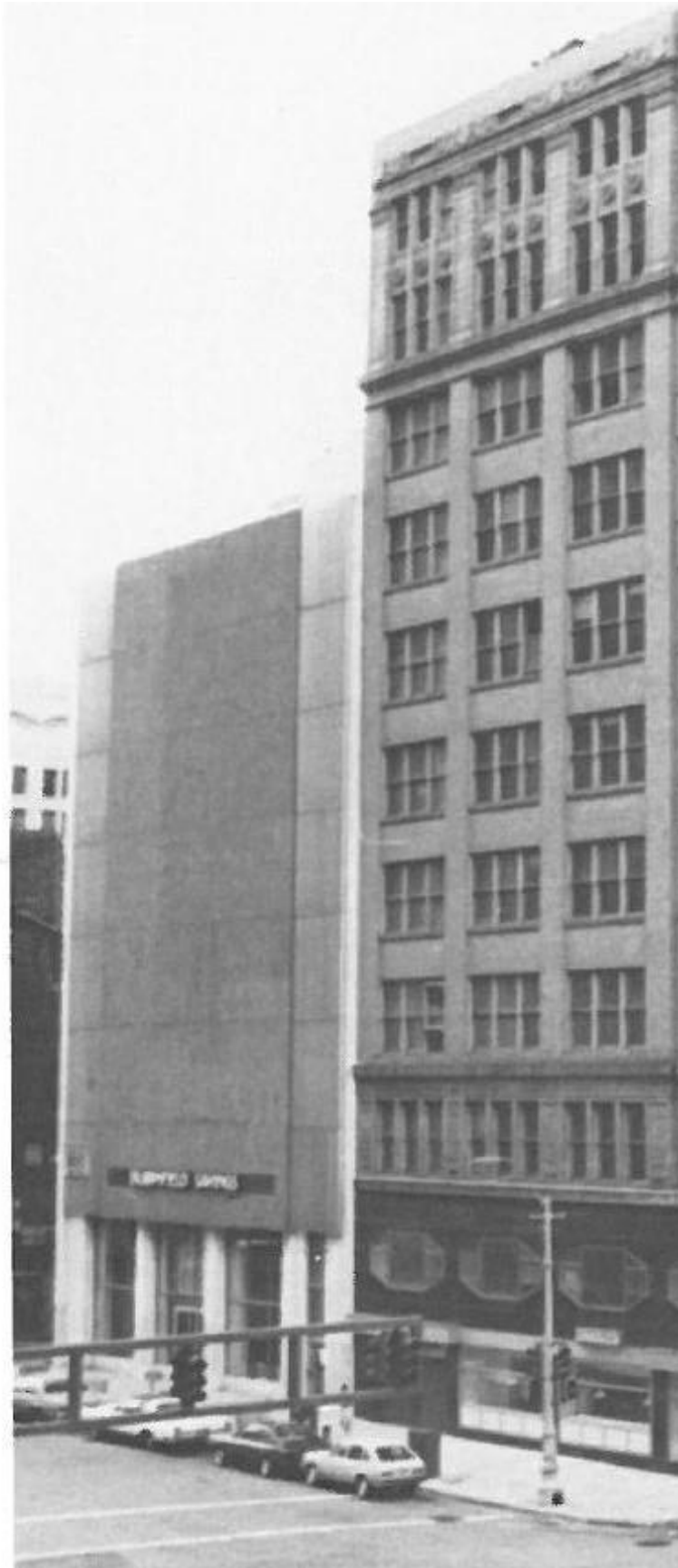


Figure #32: Historic photo from 1986 zoomed in.

## **1133 Griswold Building** Detroit, MI