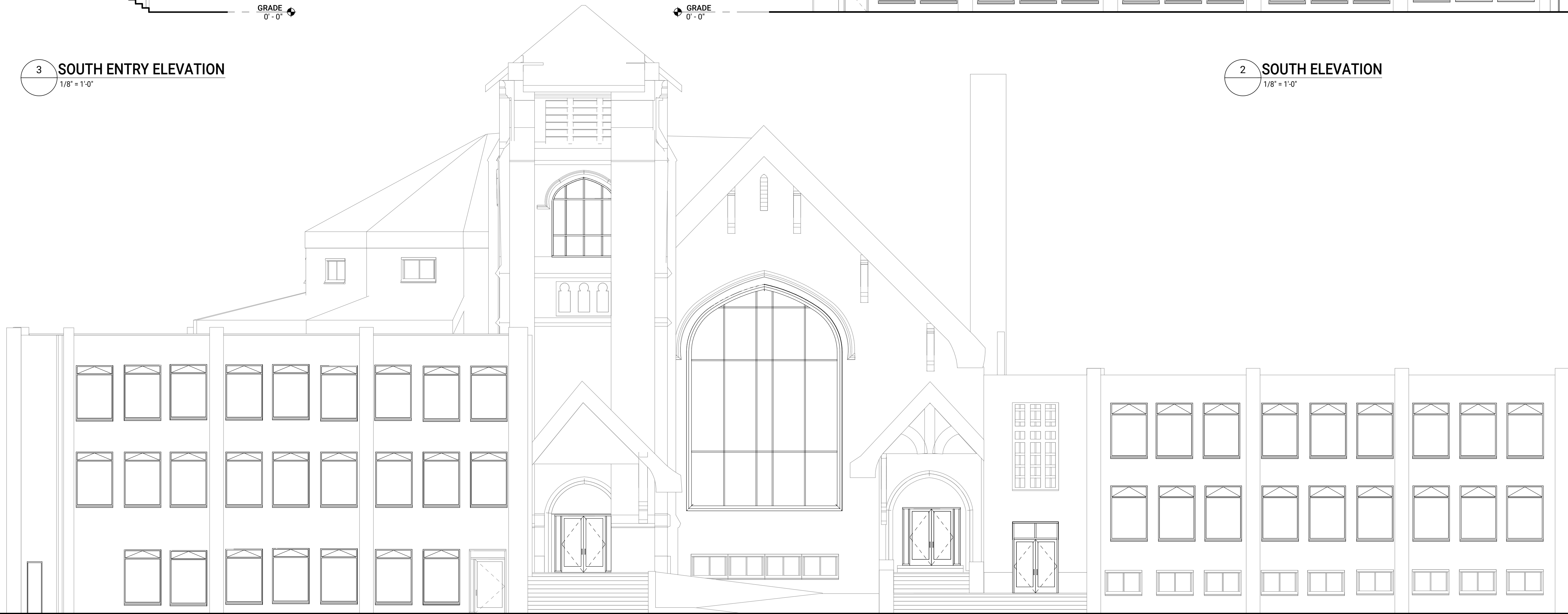




3 SOUTH ENTRY ELEVATION  
1/8" = 1'-0"

2 SOUTH ELEVATION  
1/8" = 1'-0"



1 EAST ELEVATION  
1/8" = 1'-0"

DO NOT SCALE DRAWINGS

ISSUED  
10.27.22 REVIEW

DRAWN AEB  
CHECKED K.J.C.

SEAL

**NOT FOR  
CONSTRUCTION**

THIS DOCUMENT AND THE INFORMATION CONTAINED THEREIN IS THE SOLE POSSESSION OF STUDIO DETROIT AND SHALL NOT BE ALTERED OR MODIFIED WITHOUT THE EXPRESS WRITTEN PERMISSION OF STUDIO DETROIT. ANY MODIFICATION OR ALTERATION THEREOF SHALL INDEMNIFY AND HOLD HARMLESS STUDIO DETROIT OF ALL EXPENSES, CLAIMS AND/OR LIABILITY RESULTING FROM SUCH MODIFICATIONS OR ALTERATIONS.  
©2022 STUDIO DETROIT LLC

CLIENT  
**THE HISTORIC KING  
SOLOMON MISSIONARY  
BAPTIST CHURCH**

PROJECT 1504

**KING SOLOMON**  
6100 14TH ST, DETROIT, MI  
48208

MAIN ENTRANCE 5'-8"  
SIDE ENTRANCE 2'-10"  
GRADE 0'-0"

EXTERIOR ELEVATIONS

**A2.1**

DO NOT SCALE DRAWINGS

ISSUED

10.27.22 REVIEW

DRAWN AEB  
CHECKED K.J.C.

SEAL

**NOT FOR  
CONSTRUCTION**

THIS DOCUMENT AND THE INFORMATION CONTAINED THEREIN IS THE SOLE POSSESSION OF STUDIO DETROIT AND SHALL NOT BE ALTERED OR MODIFIED WITHOUT THE EXPRESS WRITTEN PERMISSION OF STUDIO DETROIT. ANY MODIFICATION OR ALTERATION THEREOF SHALL INDEMNIFY AND HOLD HARMLESS STUDIO DETROIT OF ALL EXPENSES, CLAIMS AND/OR LIABILITY RESULTING FROM SUCH MODIFICATIONS OR ALTERATIONS.  
©2022 STUDIO DETROIT LLC

CLIENT

**THE HISTORIC KING  
SOLOMON MISSIONARY  
BAPTIST CHURCH**

PROJECT 1504

**KING SOLOMON**  
6100 14TH ST, DETROIT, MI  
48208

EXTERIOR ELEVATIONS

**A2.2**

T.O. TOWER  
76'-0"

T.O. PARAPET (SOUTH)  
38'-5"

MAIN ENTRANCE  
5'-8"

GRADE  
0'-0"

**3 NORTH ENTRY ELEVATION**  
1/8" = 1'-0"

T.O. TOWER  
76'-0"

T.O. PARAPET (NORTH)  
32'-11"

MAIN ENTRANCE  
5'-8"

GRADE  
0'-0"

**2 NORTH ELEVATION**  
1/8" = 1'-0"

T.O. TOWER  
76'-0"

T.O. PARAPET (SOUTH)  
38'-5"

T.O. PARAPET (NORTH)  
32'-11"

SIDE ENTRANCE  
2'-10"

GRADE  
0'-0"

**1 WEST ELEVATION**  
1/8" = 1'-0"

