


McCleer | Architetto
4736 Avery
Detroit Michigan 48208
313 831 8116
mccarch@flash.net

Campau Building Bar
73-81 West Elizabeth
Detroit MI
September 2, 2022

Proposed Colors

- New windows**
Marvin Ultimate Single-Hung windows
Proposed Color: Copper Pearlescent


MARVIN  Products Solutions Inspiration Why Marvin

MARVIN SIGNATURE® ULTIMATE

Clad Color Options

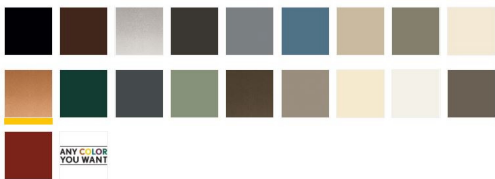
Our low maintenance clad-wood products feature an extruded aluminum exterior finished in commercial-grade high performance PVDF fluoropolymer paint. Because our finish meets the toughest American Architectural Manufacturers Association (AAMA) 2605 standard, you can expect even our richest and boldest hues to resist fading and chalking even in harsh sun or extreme weather conditions. A palette of nineteen color options spans from muted, earthy tones to bold, rich colors and three pearlescent finishes. Custom color matching is also available to meet any design vision.

The American Architectural Manufacturers Association (AAMA) awards certifications to materials that pass numerous, rigorous tests. These tests simulate the harsh conditions that a finish will encounter throughout the life of the window or door. Passing these specification tests and achieving AAMA verification provides independent verification that our finishes are best-in-class.



Copper Pearlescent

Selected: Copper Pearlescent



ANY COLOR YOU WANT

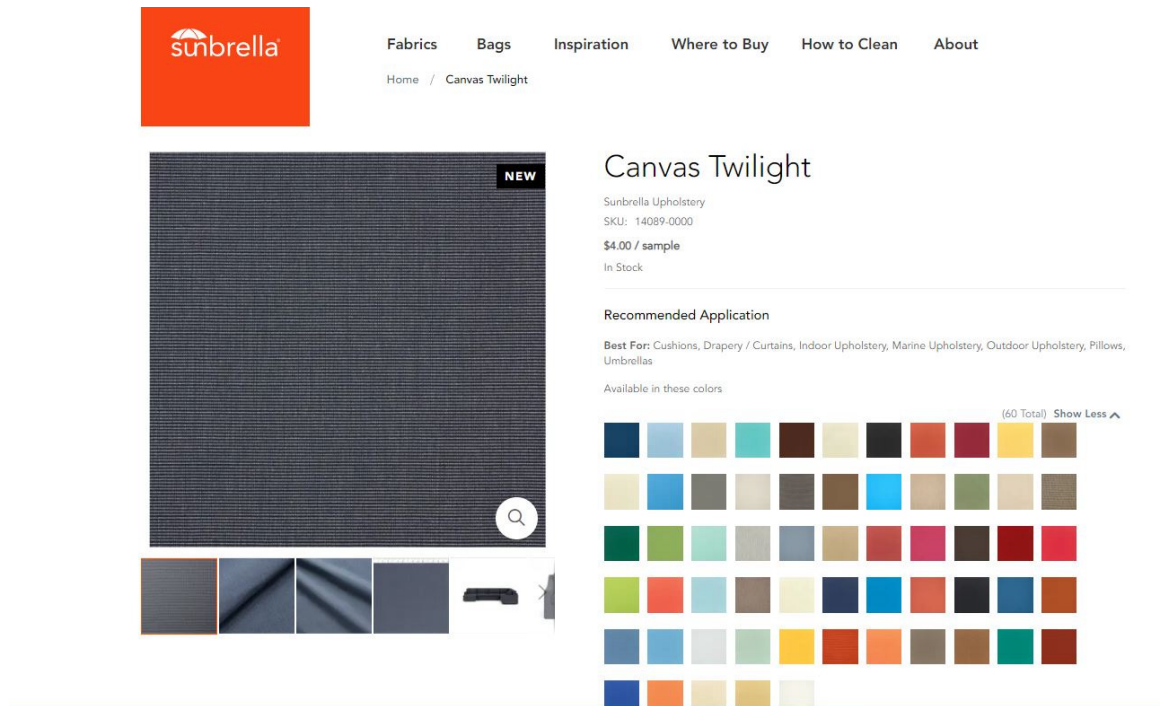
2. New Custom Exterior Doors

Plain-sawn Oak

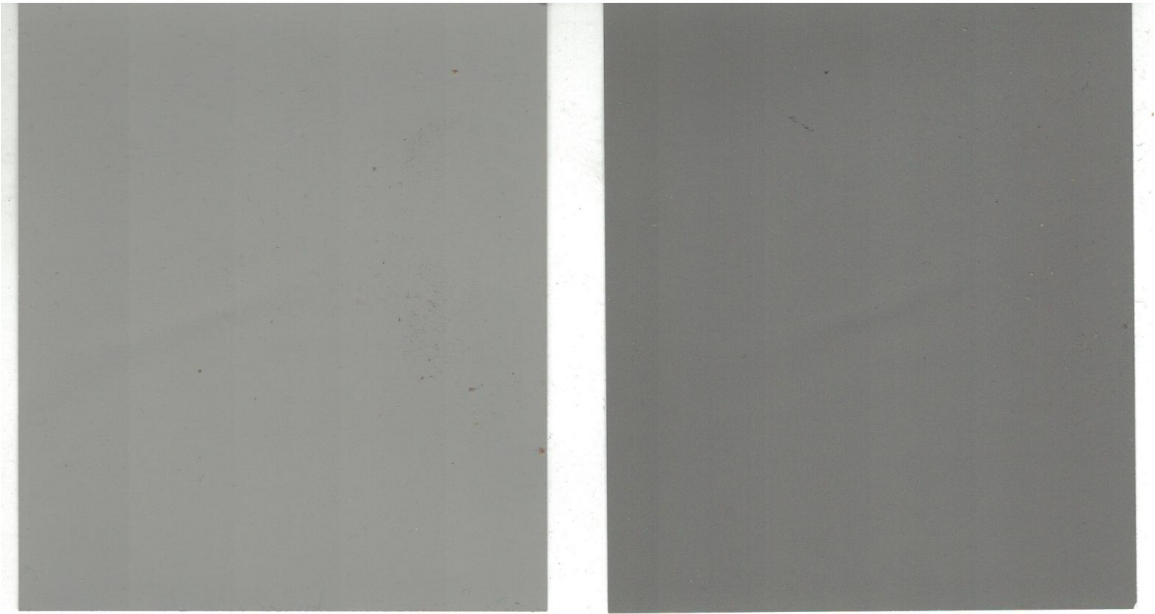
“PrairieWheat” gel stain



3. **Fabric Exterior Awning**
Sunbrella Woven Fabric
“Canvas Twilight”

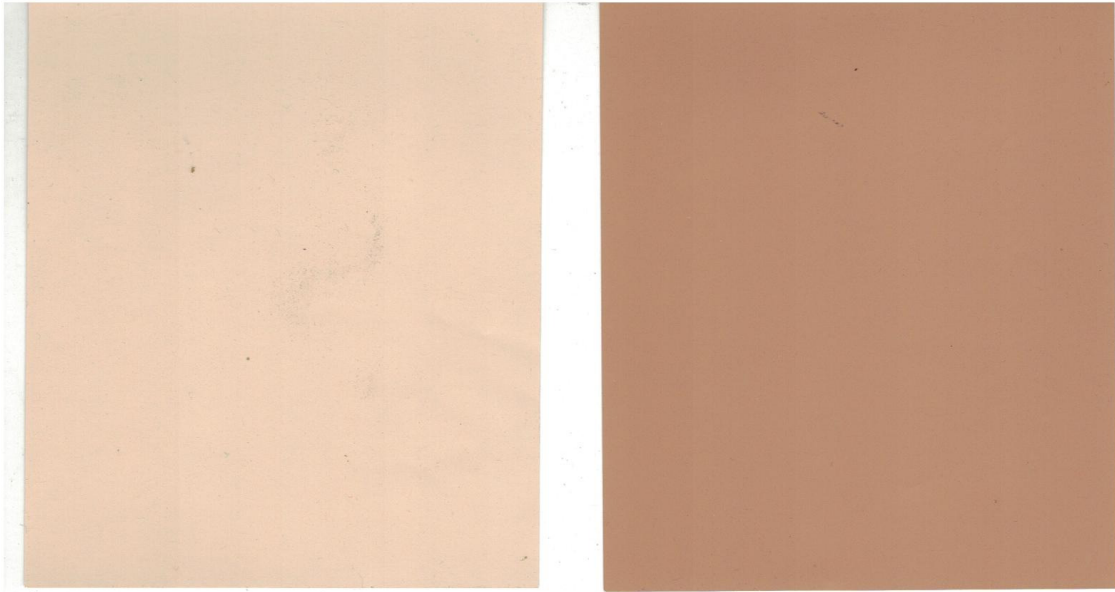


4. Exterior Paint Colors



Paint Color "A"
Right side
Sherwin Williams "Stone's Throw"
SW 1013

Paint Color "B"
Left side
Sherwin Williams "Power Gray"
SW 1012



Paint Color “C”

Left side

Sherwin Williams “Sundew”

SW 1121

Paint Color “D”

Right side

Sherwin Williams “Kenyan Kopper”

SW 1349