

OWNER(S):
RACHELLE AND STEVEN ECONOMY
2903 SEMINOLE
DETROIT, MICHIGAN, 48214
313.922.8221

ECONOMY RESIDENCE

2903 SEMINOLE
DETROIT, MICHIGAN 48214

SEPTEMBER 26, 2021

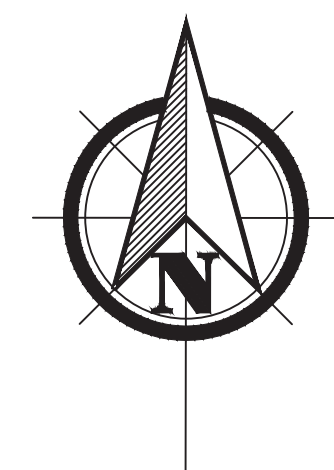
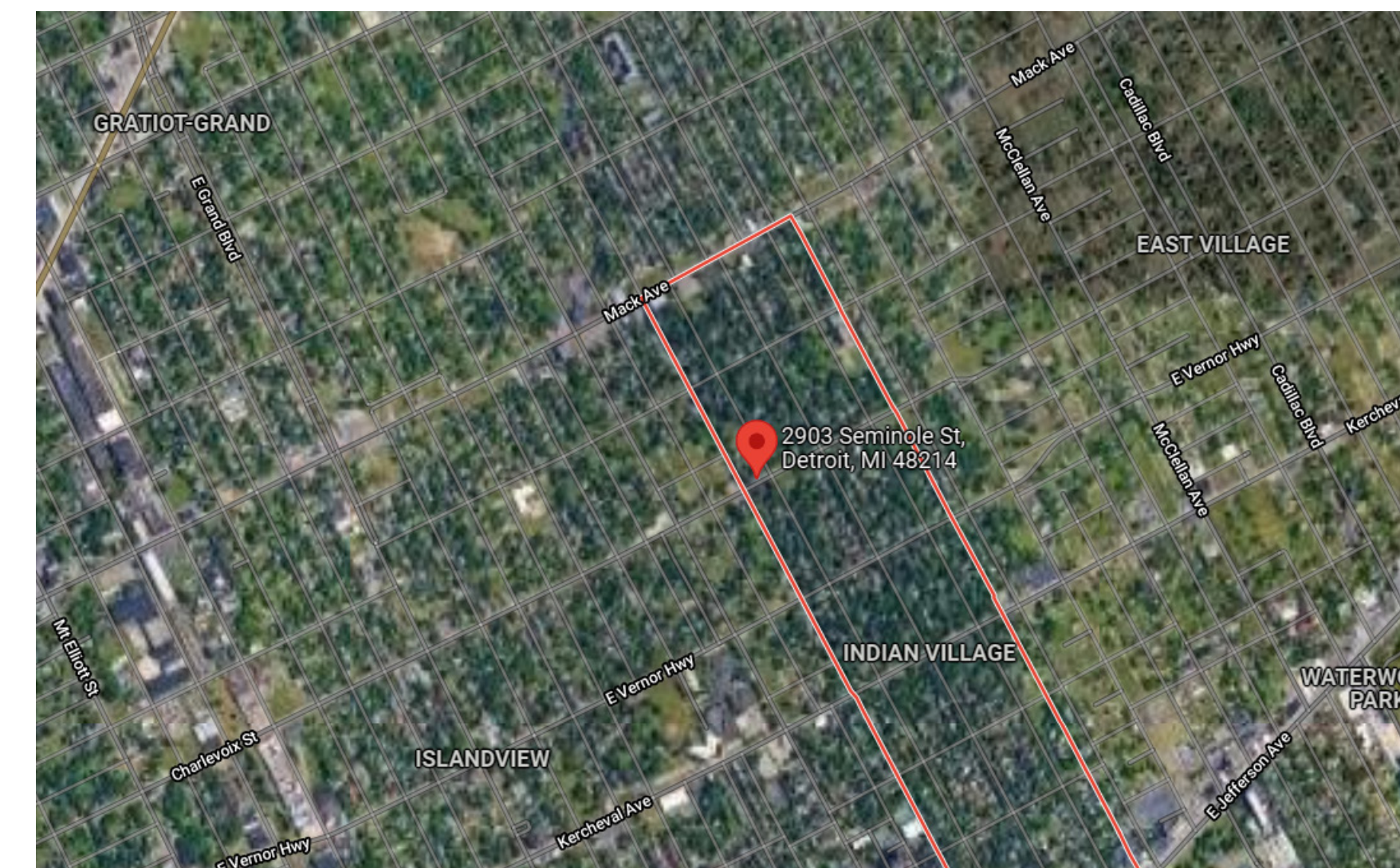
LANDSCAPE ARCHITECT:
JEFF KLEIN ASLA
3138 ROSA PARKS BLVD
DETROIT, MICHIGAN 48216
classicjeff@mac.com
248.761.2922

SHEET INDEX:

- L-1 RESIDENTIAL LANDSCAPE DESIGN SET
- L-2 DEMOLITION PLAN
- L-3 SITE LAYOUT PLAN
- L-4 TREE LAYOUT PLAN
- L-5 SHRUB LAYOUT PLAN
- L-6 thru L-8 DECK DETAILS

NOTES:

ALL DIMENSIONS MUST BE FIELD VARIFIED FOR ACCURACY



LOCATION

NOTES/REVISIONS:



DESIGNED BY:

J.K.

JEFF KLEIN
LANDSCAPE ARCHITECTURE

3138 Rosa Parks Blvd. Detroit, Michigan 48216 - phone: 248.761.2922 - email: classicjeff@mac.com

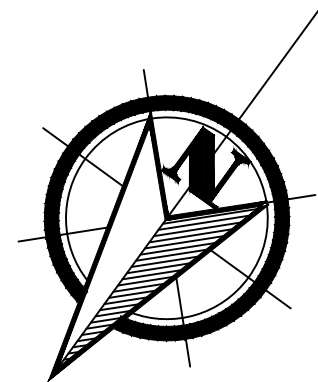
DESIGNED FOR:

ECONOMY RESIDENCE
2903 SEMINOLE
DETROIT, MICHIGAN 48214

SCALE:

SHEET:

L-1
RESIDENTIAL LANDSCAPE
DESIGN SET



REMOVE AND REPLANT EXISTING SHRUBS
CONTRACTOR TO STORE AND MAINTAIN
ON-SITE DURING CONSTRUCTION.
LANDSCAPE ARCHITECT OR HOMEOWNER
TO APPROVE FINAL LOCATION

REMOVE AND REPLANT EXISTING SHRUBS
CONTRACTOR TO STORE AND MAINTAIN
ON-SITE DURING CONSTRUCTION.
LANDSCAPE ARCHITECT OR HOMEOWNER
TO APPROVE FINAL LOCATION

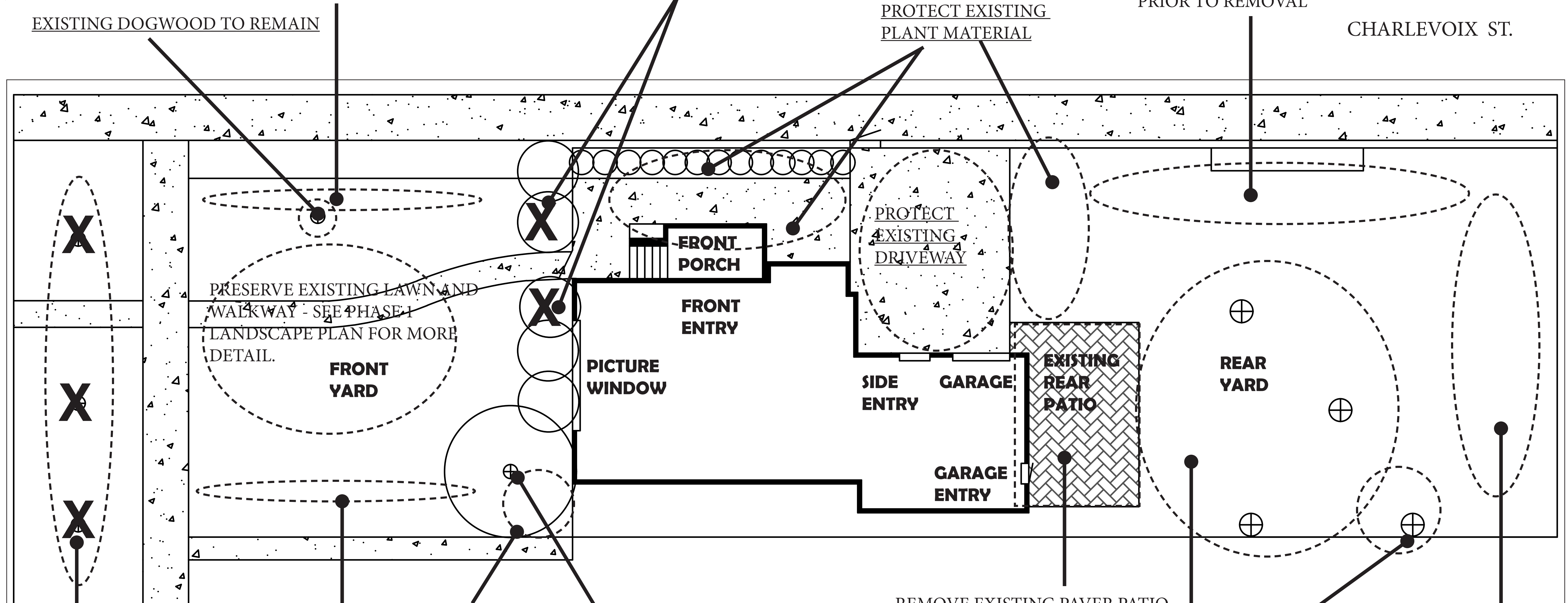
REMOVE PLANTS IN THIS AREA
GRIND STUMPS TO 12" BELOW
GRADE.
CONFIRM WITH LANDSCAPE
ARCHITECT OR HOMEOWNER
PRIOR TO REMOVAL

EXISTING DOGWOOD TO REMAIN

PROTECT EXISTING
PLANT MATERIAL

CHARLEVOIX ST.

SEMINOLE ST.



REMOVE TREE AND GRIND STUMP
12" BELOW GRADE
QUANTITY (3)
CONFIRM WITH LANDSCAPE
ARCHITECT OR HOMEOWNER
PRIOR TO REMOVAL

PRESERVE EXISTING
WISTERIA

REMOVE AND REPLANT EXISTING SHRUBS
CONTRACTOR TO STORE AND MAINTAIN
ON-SITE DURING CONSTRUCTION.
LANDSCAPE ARCHITECT OR HOMEOWNER
TO APPROVE FINAL LOCATION

REMOVE TREE AND GRIND STUMP
12" BELOW GRADE
QUANTITY (1)
CONFIRM WITH LANDSCAPE
ARCHITECT OR HOMEOWNER
PRIOR TO REMOVAL

REMOVE EXISTING PAVER PATIO
RE-USE BRICK PAVERS
PER CONSTRUCTION PLANS
APPROX. 400 SQ.FT.

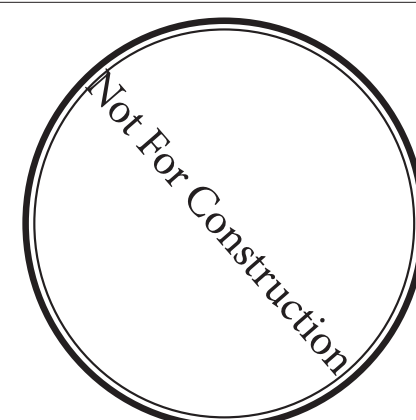
PROTECT ALL OAK TREES
NO EQUIPMENT OR STORAGE
OF MATERIAL WITHIN 10' OF
TRUNK. USE EXTREME CARE
WHEN WORKING UNDER TREE-
DRIP LINES

REMOVE PLANTS IN THIS AREA
GRIND STUMPS TO 12" BELOW
GRADE.
CONFIRM WITH LANDSCAPE
ARCHITECT OR HOMEOWNER
PRIOR TO REMOVAL

*ANY ADDITIONAL PLANT MATERIAL OR HARDSCAPES FOUND OR KNOWN ON-SITE SHALL BE PROTECTED THROUGHOUT CONSTRUCTION. ALL REMOVALS TO BE APPROVED BY LANDSCAPE ARCHITECT OR HOMEOWNER PRIOR TO REMOVAL.

NOTES/REVISIONS:

OCTOBER 5, 2021



DESIGNED BY:

J.K.

DESIGNED FOR:

JEFF KLEIN
LANDSCAPE ARCHITECTURE

ECONOMY RESIDENCE
2903 SEMINOLE
DETROIT, MICHIGAN 48214

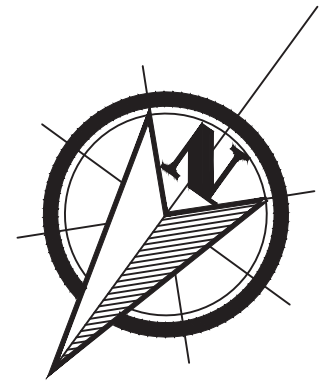
SCALE:

NOT TO SCALE

SHEET:

L-2

DEMOLITION PLAN



BOULDER LOCATIONS (TYPICAL)
 SIZE 3-4' MEASURED IN 3 DIRECTIONS
 QUANTITY (3)

PRESERVE EXISTING LAWN
 APPROXIMATELY 450 SQ.FT.

EXISTING DOGWOOD TO REMAIN

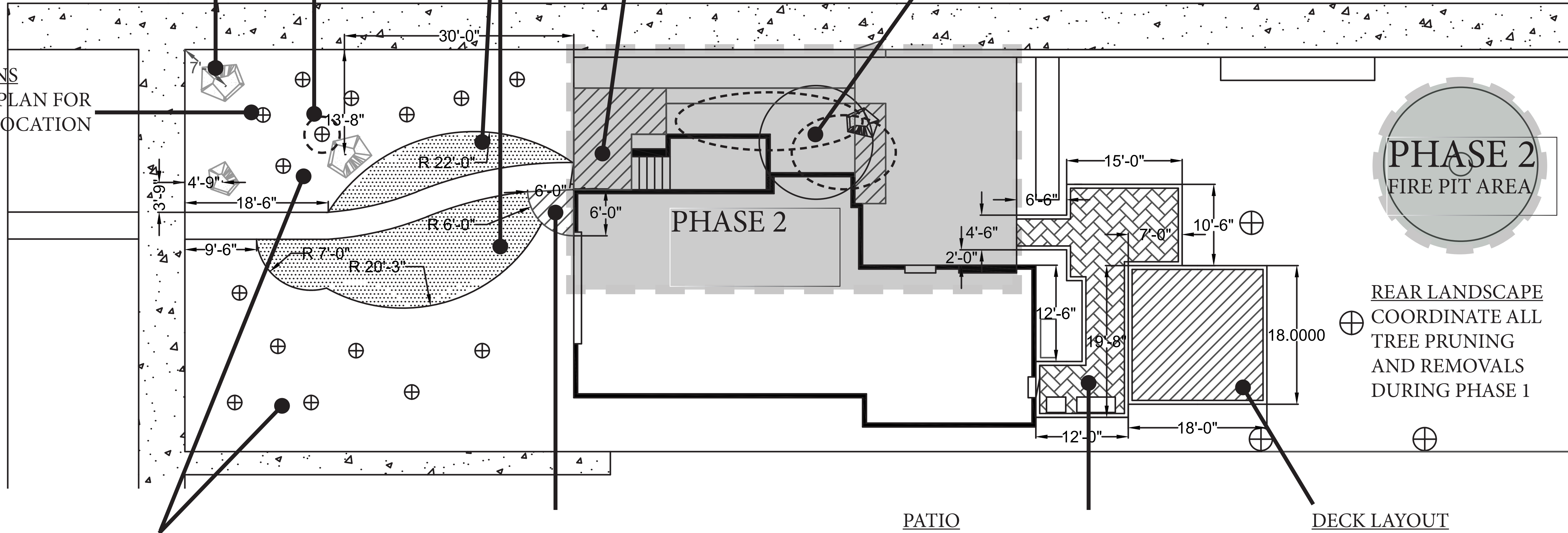
PHASE 2
 REVISIT CONCRETE LAYOUT AND FINAL ELEVATION FOR PROPER DRAINAGE.

PHASE 2
 REVIEW LANDSCAPE FOR REMOVALS/TRANSPLANTS OR ADDITION OF ORNAMENTAL TREE.
 PRESERVE ARBORVITAE HEDGE

CHARLEVOIX ST.

TREE LOCATIONS
 SEE PLANTING PLAN FOR VARIETY AND LOCATION

SEMINOLE ST.



LANDSCAPE BED (TYPICAL)
 REMOVE SOD - ADD 4" OF COMPOST -
 ADD 3-4" DOUBLE SHREDDED
 HARDWOOD MULCH - CONSTRUCT
 NATURAL BED EDGE TO 4" DEPTH.

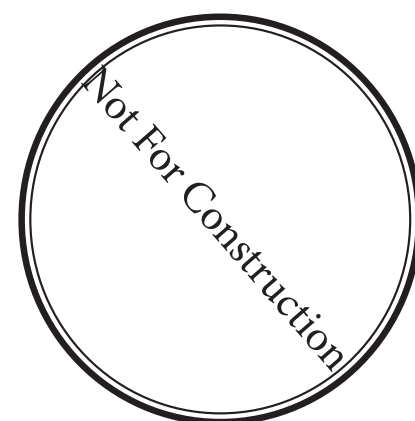
 COMBINED BED SIZE APPROXIMATELY
 1100 SQ.FT.

NEW CONCRETE TO MATCH EXISTING
 APPROX. 36 SQ.FT.
 CONFIRM CONCRETE FORM WITH
 LANDSCAPE ARCHITECT OR
 HOMEOWNER PRIOR TO
 POURING CONCRETE.

PATIO
 RE-USE EXISTING PAVERS ON-SITE.
 LAYING PATTERN TO BE DETERMINED
 WITH HOMEOWNER OR LANDSCAPE
 ARCHITECT PRIOR TO CONSTRUCTION.
 APPROX. 300 SQ.FT.

DECK LAYOUT
 DECK MATERIAL AND BOARD PATTERN
 TO BE APPROVED BY HOMEOWNER OR
 LANDSCAPE ARCHITECT.
 APPROX. 324 SQ.FT.
 DECK HEIGHT - 7" ABOVE PATIO.
 DECK POST CONSTRUCTION WITH
 MINIMAL IMPACT TO EXSTING GRADES.

NOTES/REVISIONS:
 OCTOBER 5, 2021



DESIGNED BY:
 J.K.

JEFF KLEIN
 LANDSCAPE ARCHITECTURE

3138 Rosa Parks Blvd. Detroit, Michigan 48216 - phone: 248.761.2922 - email: classicjeff@mac.com

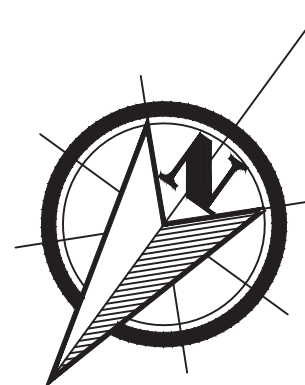
DESIGNED FOR:

ECONOMY RESIDENCE
 2903 SEMINOLE
 DETROIT, MICHIGAN 48214

SCALE:
 1' = 20'

SHEET:
 L-3

PHASE 1
 SITE LAYOUT PLAN



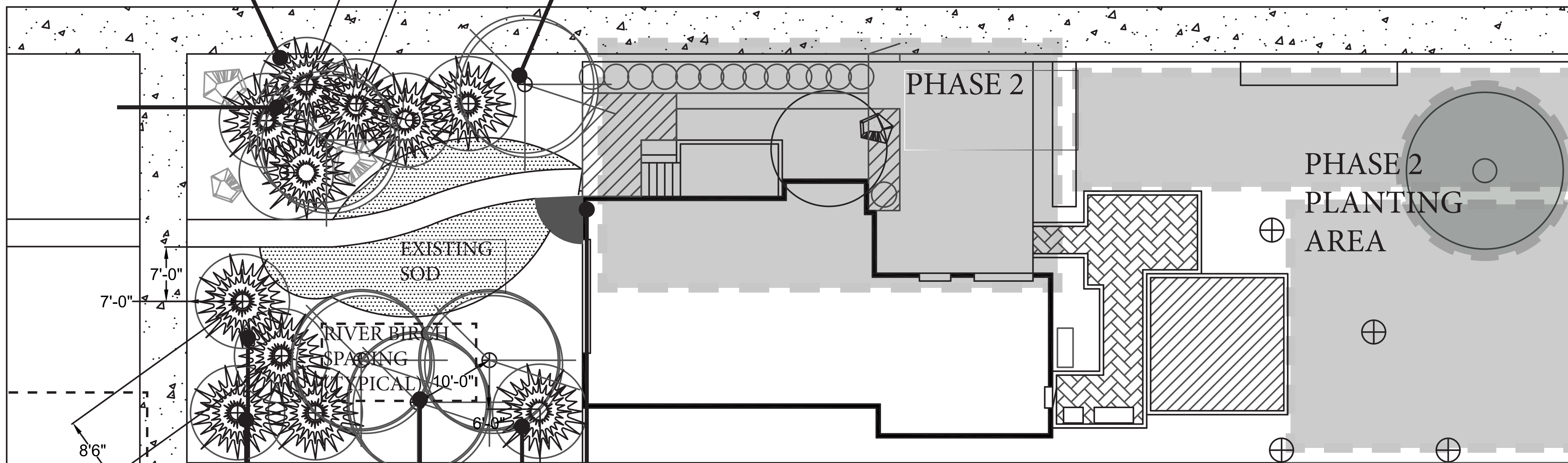
ALASKAN CEDAR
(TYPICAL) (6)

ALASKAN CEDAR
SPACING (TYPICAL)
7'-0"

RIVER BIRCH
(1)

CHARLEVOIX ST.

SEMINOLE ST.



PHASE 2
PLANTING
AREA

ALASKAN CEDAR
SPACING (TYPICAL)

7'-0"
7'-0"

RIVER BIRCH
SPACING
(TYPICAL) 10'-0"

8'-6"

ALASKAN CEDAR
(TYPICAL) (4)

RIVER BIRCH
(TYPICAL) (1)

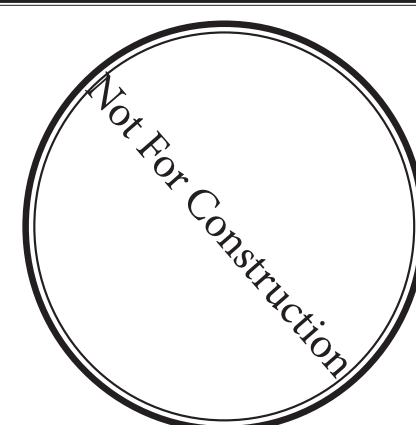
ALASKAN CEDAR
(1)

7'-0"

NOTE
TREE LOCATIONS AND SPACING ARE
APPROXIMATE.
FINAL PLACEMENT TO BE APPROVED BY
HOMEOWNER OR LANDSCAPE ARCHITECT
PRIOR TO PLANTING.

NOTES/REVISIONS:

OCTOBER 5, 2021



DESIGNED BY:

J.K.

JEFF KLEIN

LANDSCAPE ARCHITECTURE

3138 Rosa Parks Blvd. Detroit, Michigan 48216 - phone: 248.761.2922 - email: classicjeff@mac.com

DESIGNED FOR:

ECONOMY RESIDENCE
2903 SEMINOLE
DETROIT, MICHIGAN 48214

SCALE:
1" = 20'

SHEET:

L-4

PHASE 1
TREE LAYOUT PLAN

TRANSPLANT AREAS
 REUSE EXISTING PLANT MATERIAL IN
 OPEN LOCATIONS.
 LAYOUT TO BE APPROVED AND
 COORDINATED WITH LANDSCAPE
 ARCHITECT OR HOMEOWNER.

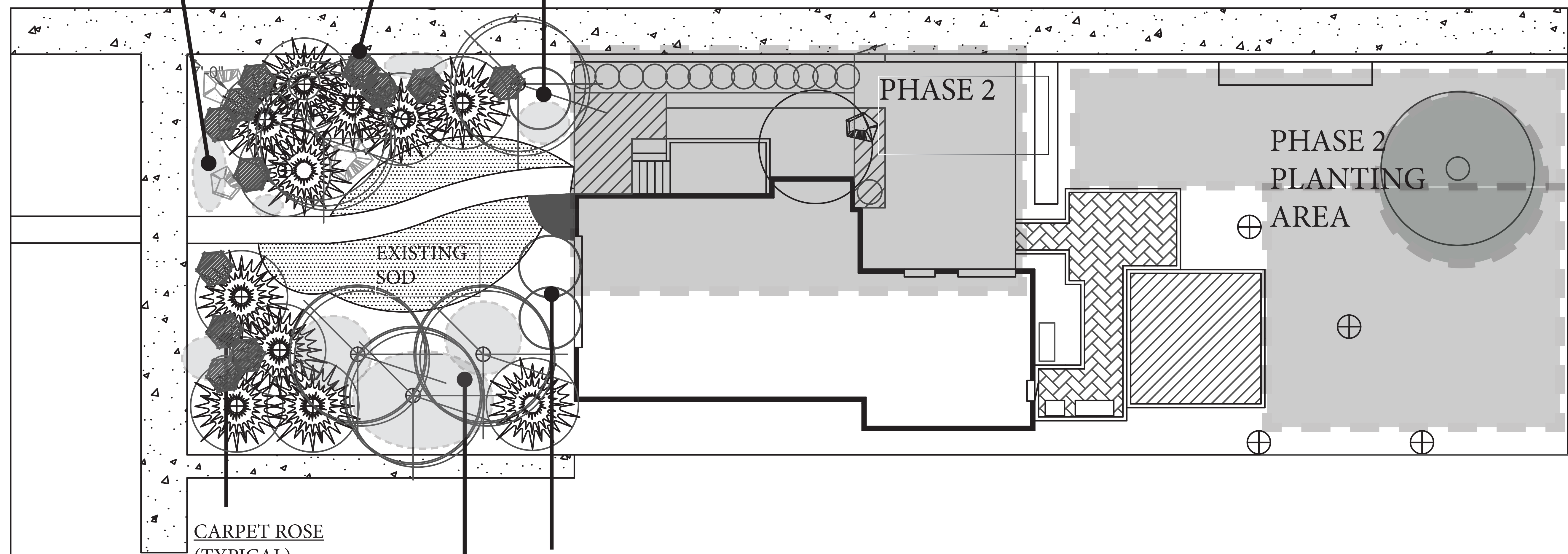


CARPET ROSE
 (TYPICAL)
 QTY (8)

EXISTING SPIREA
 QTY (1)

CHARLEVOIX ST.

SEMINOLE ST.



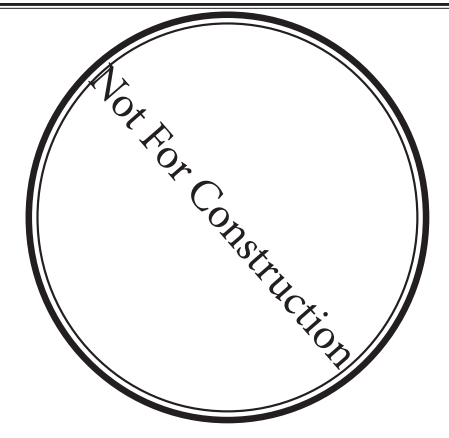
CARPET ROSE
 (TYPICAL)
 QTY (4)

EXISTING SPIREA
 QTY (2)

TRANSPLANT AREAS
 REUSE EXISTING PLANT MATERIAL IN
 OPEN LOCATIONS.
 LAYOUT TO BE APPROVED AND
 COORDINATED WITH LANDSCAPE
 ARCHITECT OR HOMEOWNER.

NOTE
 SHRUB LOCATIONS AND SPACING ARE APPROXI-
 MATE. FINAL PLACEMENT TO BE APPROVED BY HOME-
 OWNER OR LANDSCAPE ARCHITECT PRIOR TO FINAL
 PLANTING.

NOTES/REVISIONS:
 OCTOBER 5, 2021



DESIGNED BY:
 J.K.

JEFF KLEIN
 LANDSCAPE ARCHITECTURE

3138 Rosa Parks Blvd. Detroit, Michigan 48216 - phone: 248.761.2922 - email: classicjeff@mac.com

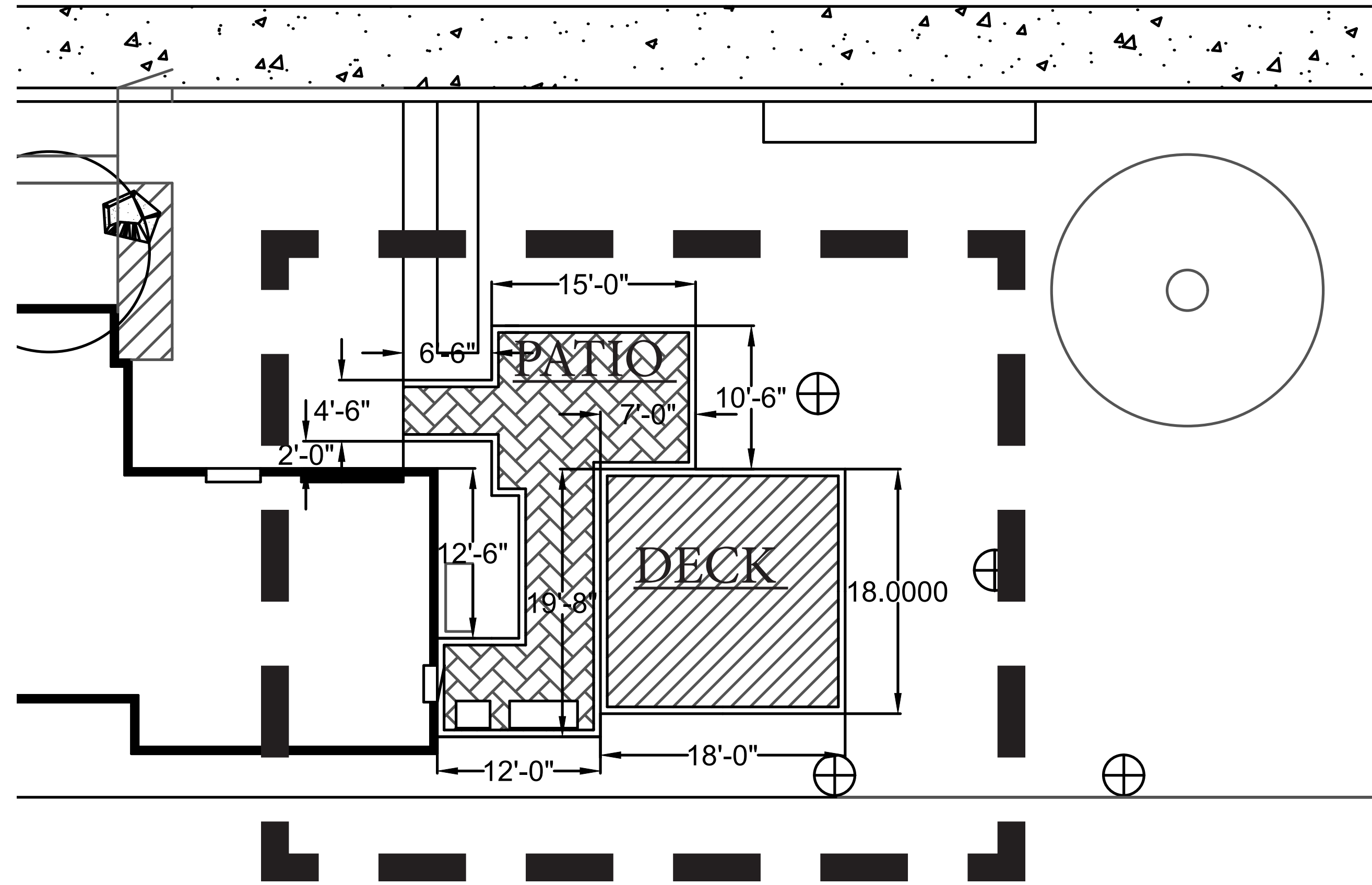
DESIGNED FOR:

ECONOMY RESIDENCE
 2903 SEMINOLE
 DETROIT, MICHIGAN 48214

SCALE:
 1" = 20'

SHEET:
 L-5

PHASE 1
 SHRUB LAYOUT PLAN



DECK - AREA DIMENSIONED - 324 SQ.FT.



SPECIES:

White Ash

APPLICATION:

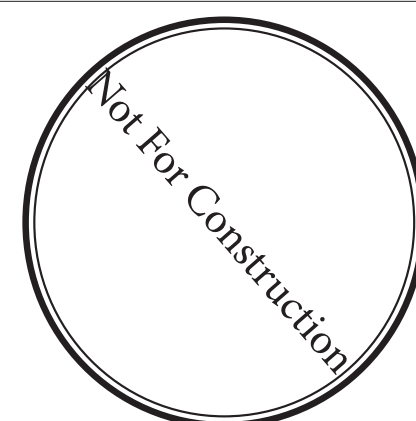
- Decking
- Cladding
- Porch Flooring

USE:

- Interior
- Exterior



NOTES/REVISIONS:
OCTOBER 5, 2021



DESIGNED BY:
J.K.

JEFF KLEIN
LANDSCAPE ARCHITECTURE

3138 Rosa Parks Blvd. Detroit, Michigan 48216 - phone: 248.761.2922 - email: classicjeff@mac.com

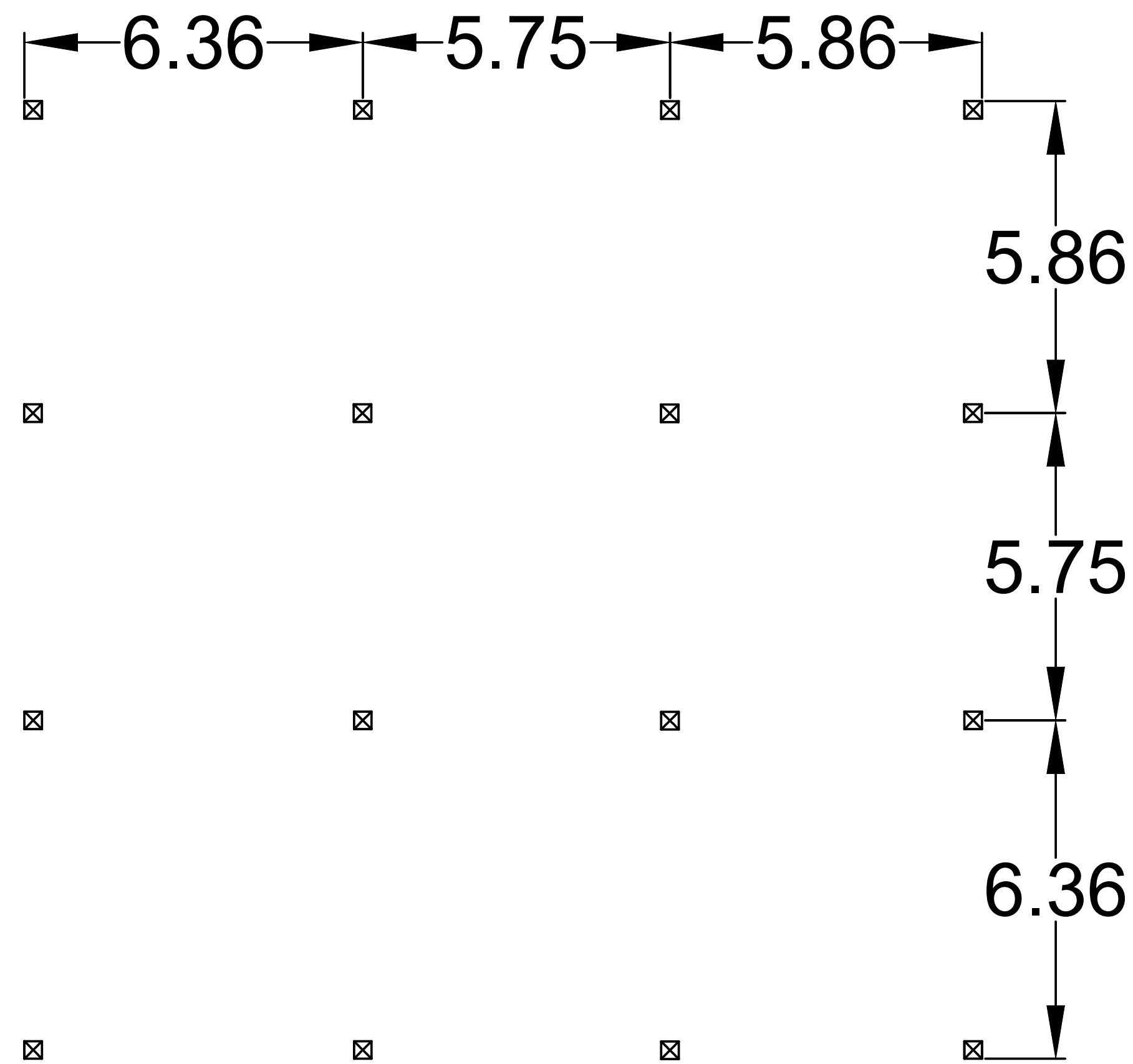
DESIGNED FOR:

ECONOMY RESIDENCE
2903 SEMINOLE
DETROIT, MICHIGAN 48214

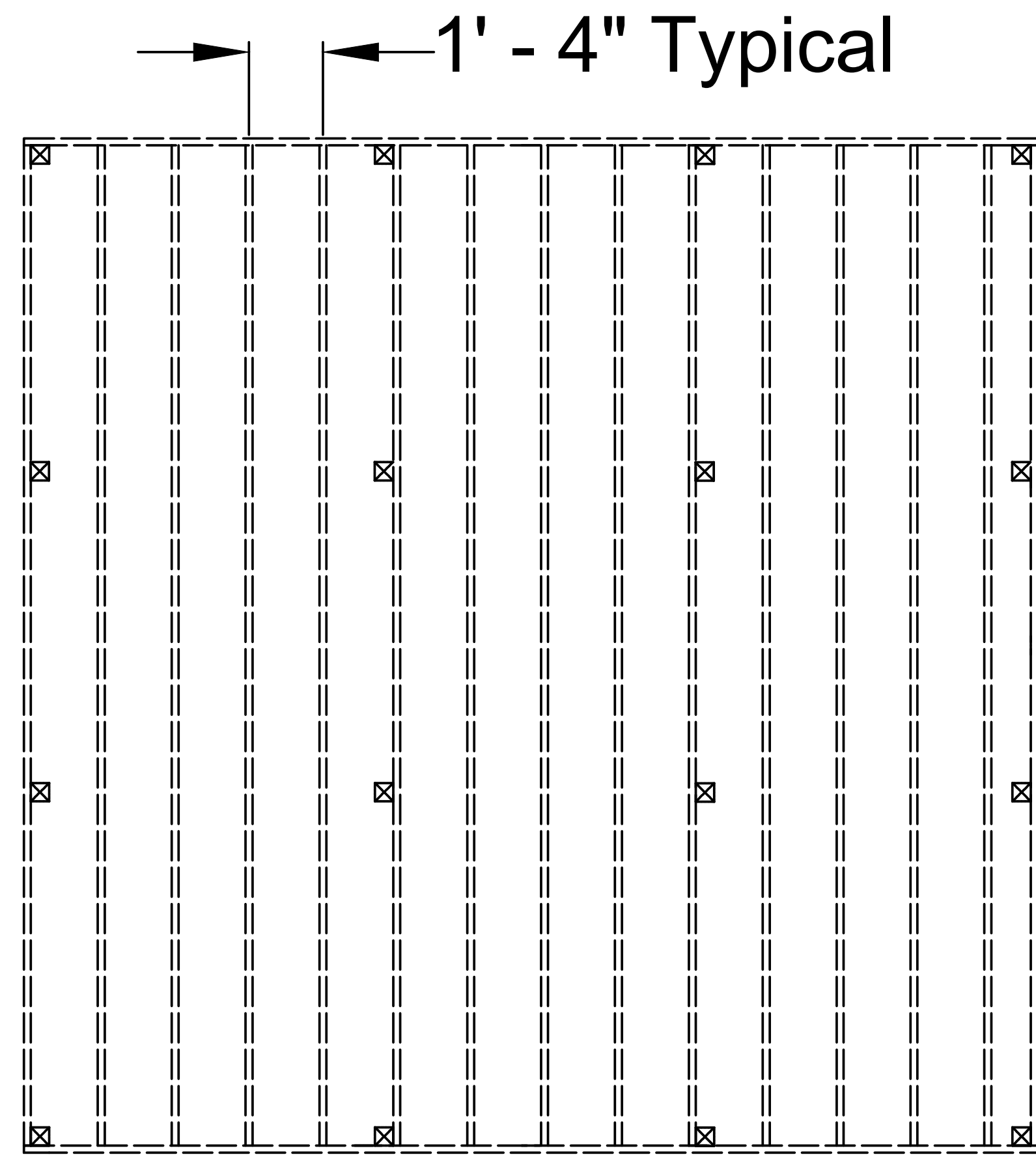
SCALE:
1" = 20'

SHEET:
L-6

DECK DETAILS



○ POST LAYOUT



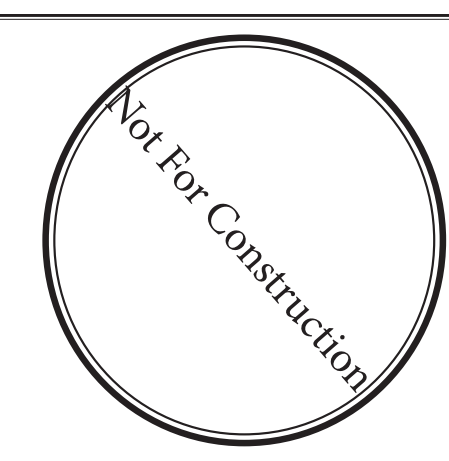
○ FRAME LAYOUT

NOTE:
POST INSTALLATION
TO CONFIRM WITH
APPLICABLE CODES

POST MATERIALS		
4x4x8 Post	Womanized	16

FRAME MATERIALS		
2x6x18	Womanized	17

NOTES/REVISIONS:
OCTOBER 5, 2021



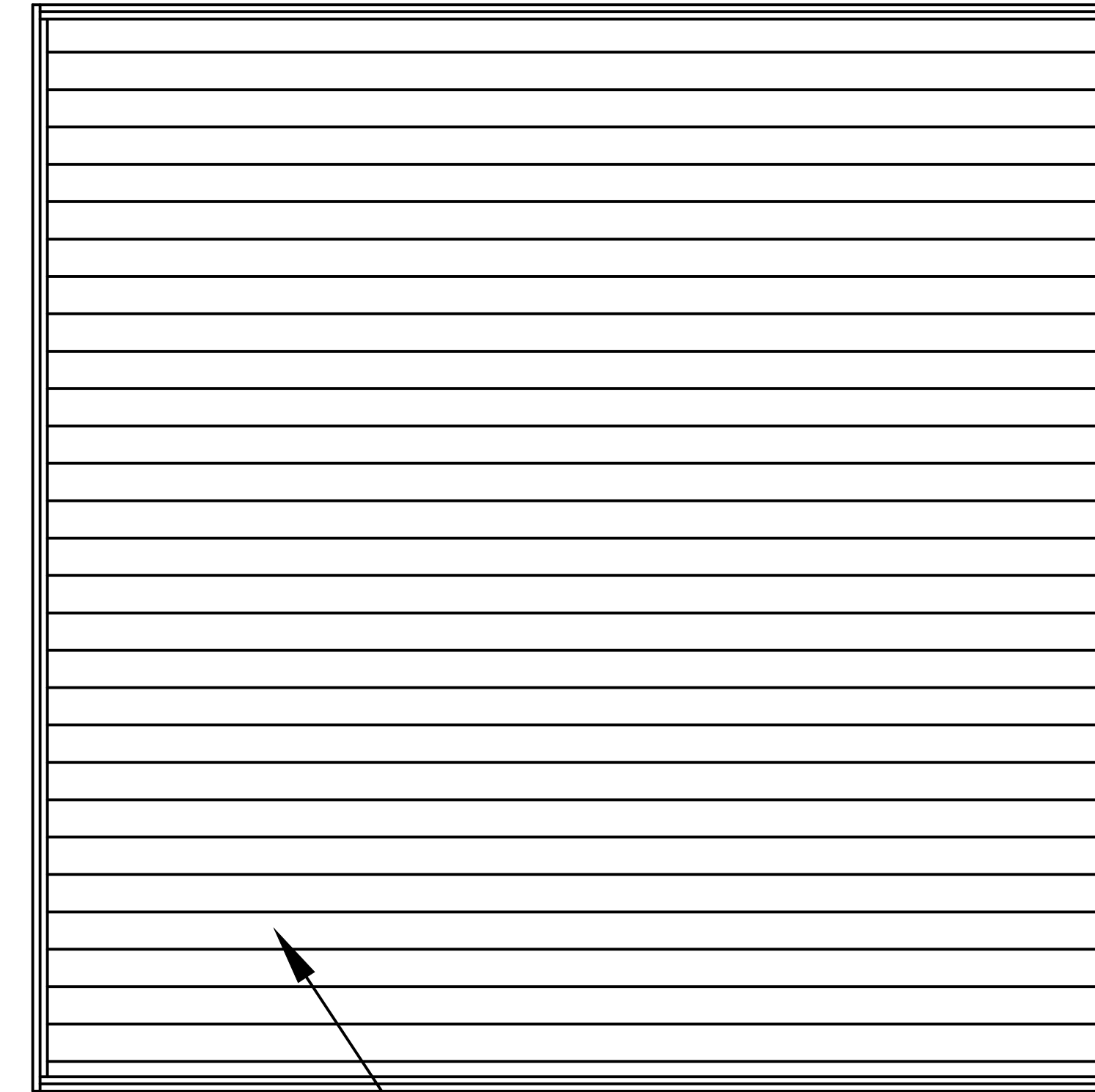
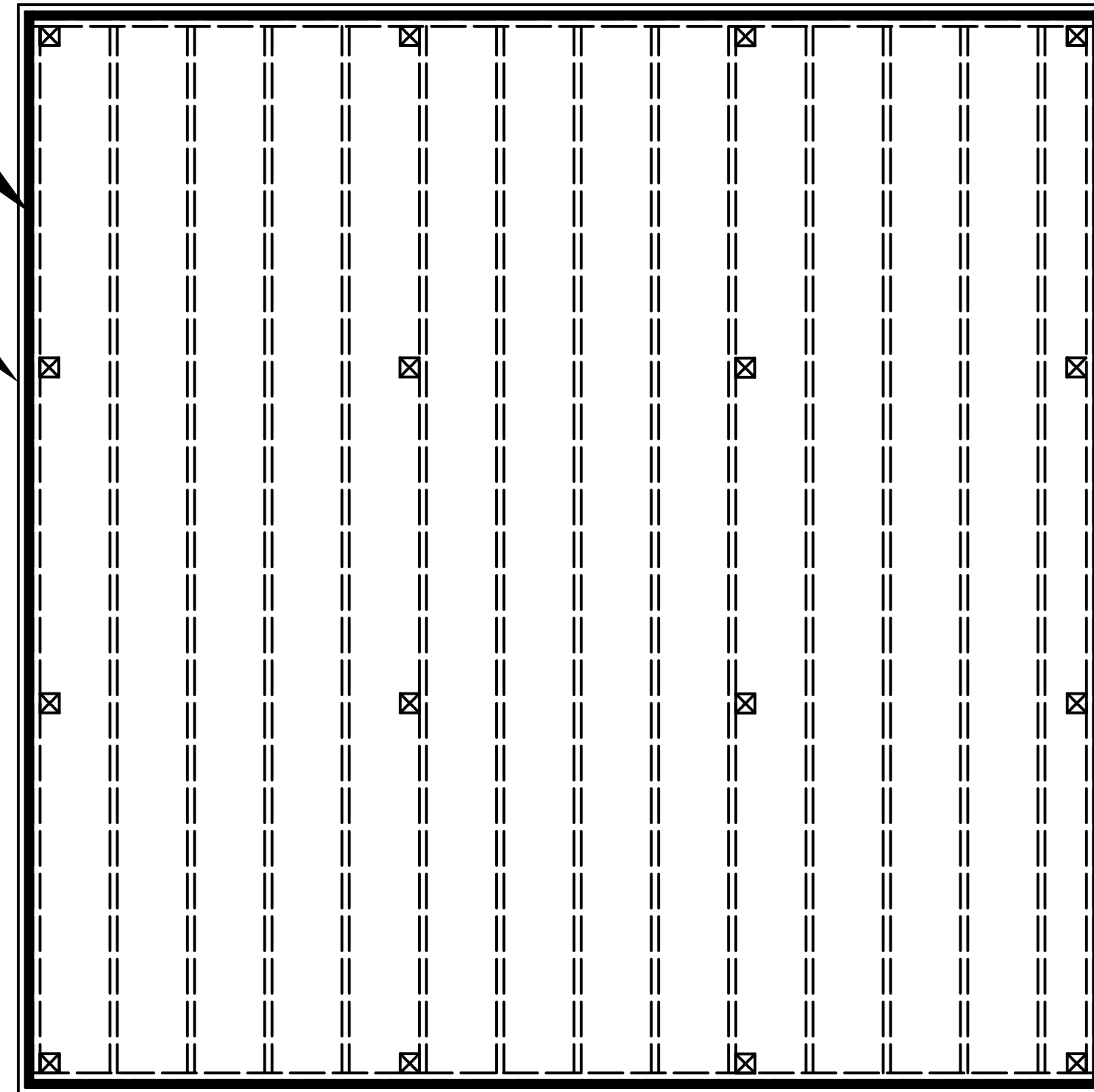
DESIGNED BY:
J.K.
JEFF KLEIN
LANDSCAPE ARCHITECTURE
3138 Rosa Parks Blvd. Detroit, Michigan 48216 - phone: 248.761.2922 - email: classicjeff@mac.com

DESIGNED FOR:
ECONOMY RESIDENCE
2903 SEMINOLE
DETROIT, MICHIGAN 48214

SCALE:
No Scale
SHEET:
L-7
DECK DETAILS

1x6x20 MAX NO GROOVE

1x6x20 NO GROOVE



5/4x6x18

○ **FACIA LAYOUT**

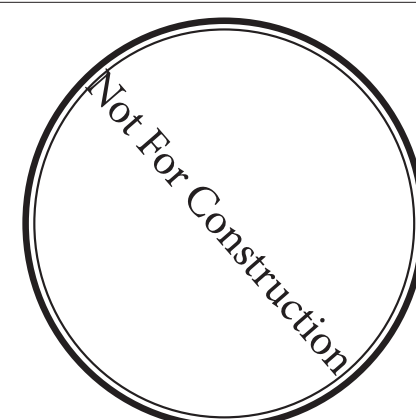
○ **DECKING LAYOUT**

FRAME MATERIALS		
1x6x20 MAX	Thermory Ash - No Grove	4
1x4x20	Thermory Ash - No Grove	4

FRAME MATERIALS		
5/4x6x18	Thermory Ash	30

NOTES/REVISIONS:

OCTOBER 5, 2021



DESIGNED BY:

J.K.

DESIGNED FOR:

JEFF KLEIN
LANDSCAPE ARCHITECTURE

3138 Rosa Parks Blvd. Detroit, Michigan 48216 - phone: 248.761.2922 - email: classicjeff@mac.com

ECONOMY RESIDENCE
2903 SEMINOLE
DETROIT, MICHIGAN 48214

SCALE:

No Scale

SHEET:

L-8

DECK DETAILS