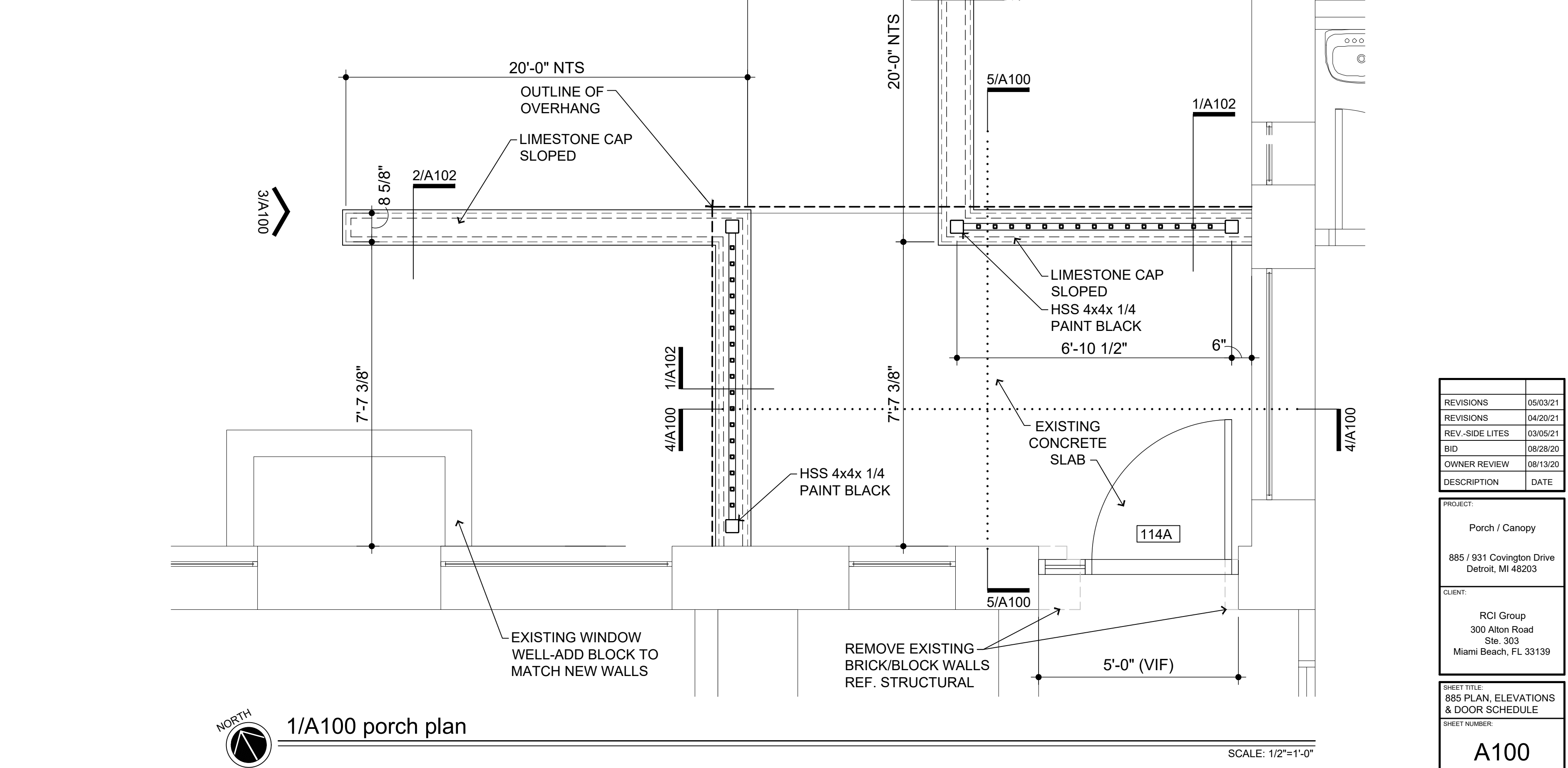
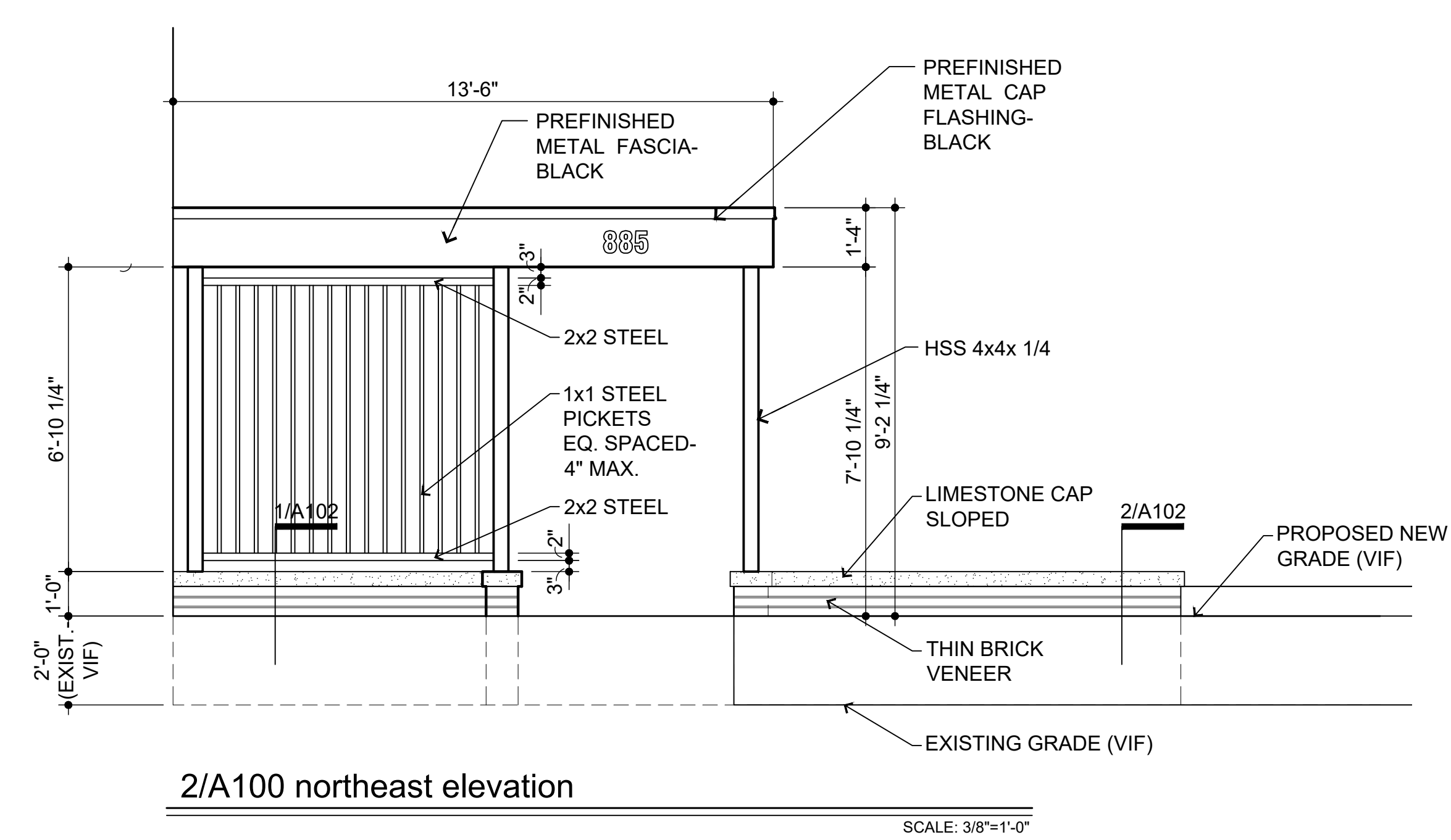
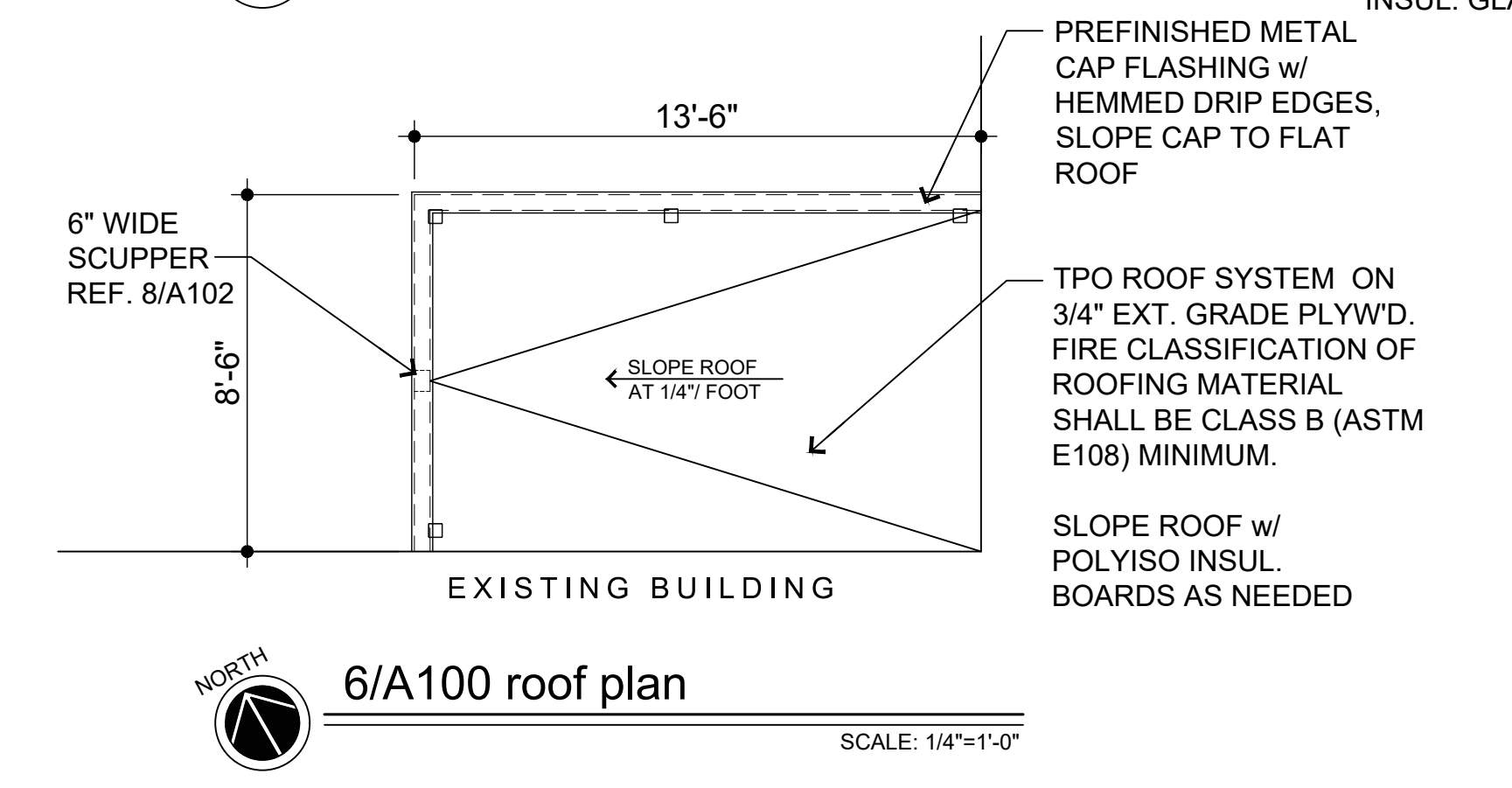
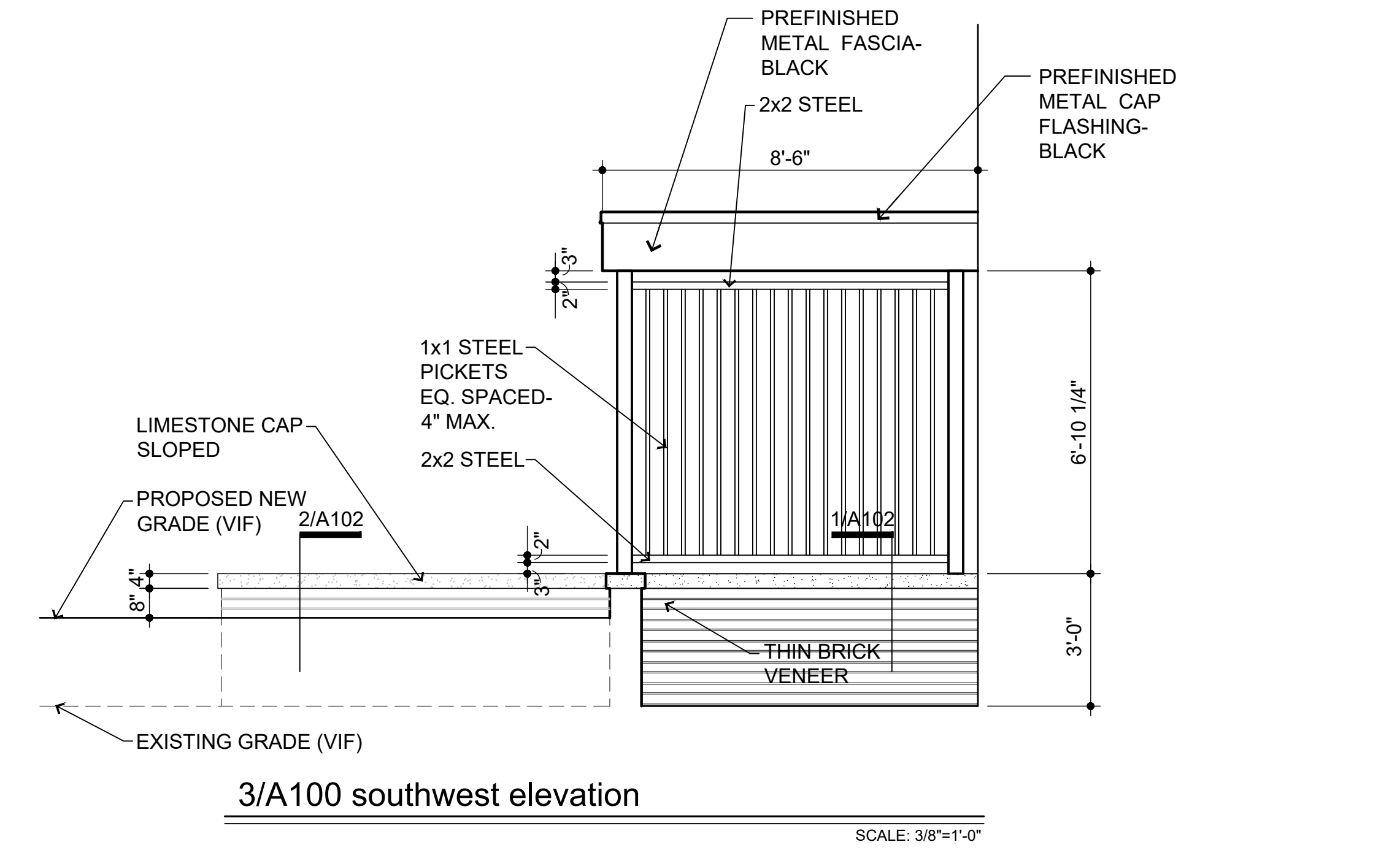


DOOR SCHEDULE										
*ROUGH OPENINGS TO BE VERIFIED IN FIELD PRIOR TO INSTALLATION										
NO.	LOCATION	DOOR		FRAME		WIDTH x HEIGHT	THK'NESS	FIRE RATING	HARDWARE SET	REMARKS
		TYPE	MAT'L	TYPE	MAT'L					
114A	LOBBY - 114	1	HOLLOW CORE	A	HOLLOW METAL	3'-6" x 7'-0"	1 3/4"		15	TEMP. INSUL. GLASS, INSUL. CORE

HARDWARE SET 15 - RIM PANIC W/ PULL TRIM [LOCK / UNLOCK] + CLOSER STOP

3 EA.	HINGES 355SHB 4545 NRP	32D	PDQ
1 EA.	RIM PANIC 6201RA (CD) (03)	32D	PDQ
1 EA.	RIM CYLINDER I5308 X I5207-1 PDQ2 (03)	26D	PDQ
1 EA.	MORTISE CYLINDER I5307 X I5207-1 PDQ2 (CD)	26D	PDQ
1 EA.	PULL 1157 X 4 134 MOUNT AT LOOSE ENDS	32D	DON JO
1 EA.	CLOSER 7101BC SCS X DPPA	689	PDQ
1 EA.	KICKPLATE 90 10" X 32" LDW B4E (PUSH SIDE)	32D	DON JO
1 EA.	THRESHOLD S205A	AL	REESE
1 EA.	SWEEP 323A - MOUNT PULL SIDE	AL	REESE
1 SET	WEATHERSTRIP 855C (MOUNT PRIOR TO CLOSER SHOE)	AL	REESE
1 EA.	RAIN DRIP 201C	AL	REESE

- door schedule general notes:**
- ALL DOORS SHALL HAVE HANDLES, PULLS LATCHES, AND OPERATING DEVICES WHICH DO NOT REQUIRE TIGHT GRASPING, TIGHT PINCHING OR TWISTING OF THE WRIST TO OPERATE. REFER TO SECTION 404.2.7 OF ICC / ANSI A117.1 - 2009.
 - PRIMARY LOCKING AND LATCHING DEVICES ON DOORS SHALL BE MOUNTED A MINIMUM OF 34" TO A MAXIMUM OF 48" ABOVE FINISHED FLOOR HEIGHT. REFER TO SECTION 404.2.6 OF ICC / ANSI A117.1 - 2009.

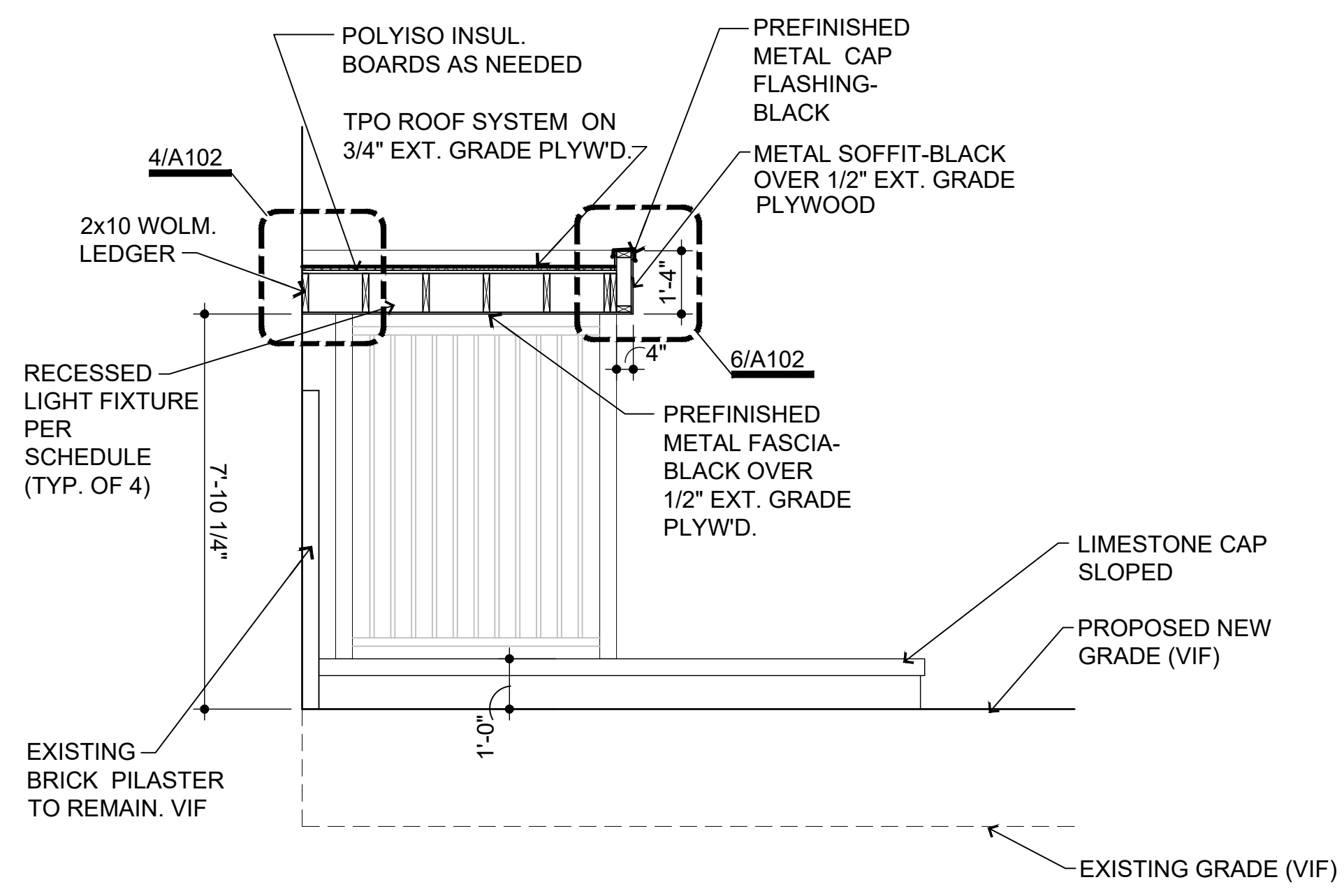


REVISIONS	DATE
05/03/21	
04/20/21	
03/05/21	
08/28/20	
08/13/20	

PROJECT: Porch / Canopy
885 / 931 Covington Drive
Detroit, MI 48203

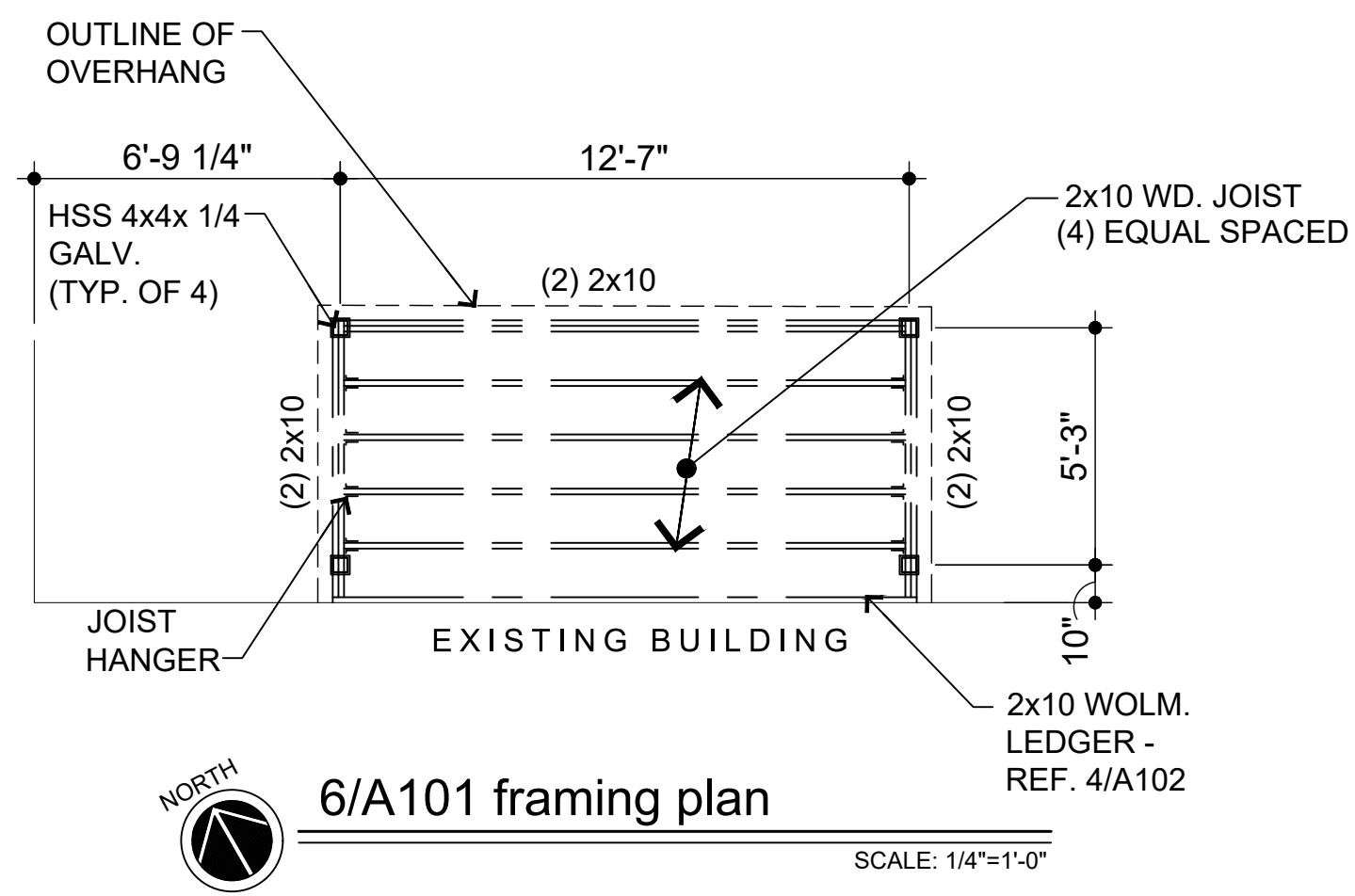
CLIENT: RCI Group
300 Altam Road
Ste. 303
Miami Beach, FL 33139

SHEET TITLE: 885 PLAN, ELEVATIONS & DOOR SCHEDULE
SHEET NUMBER: A100



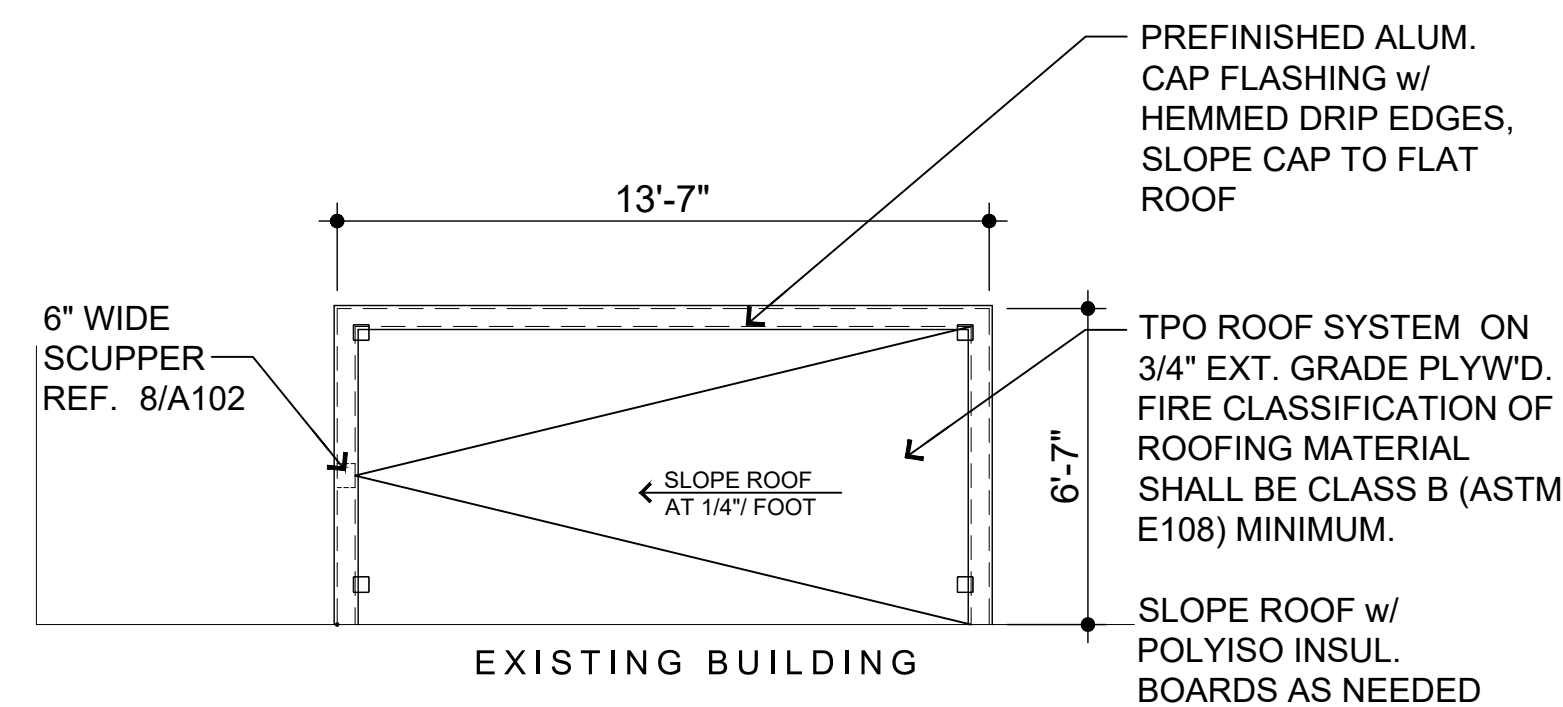
4/A101 section

SCALE: 3/8"=1'-0"



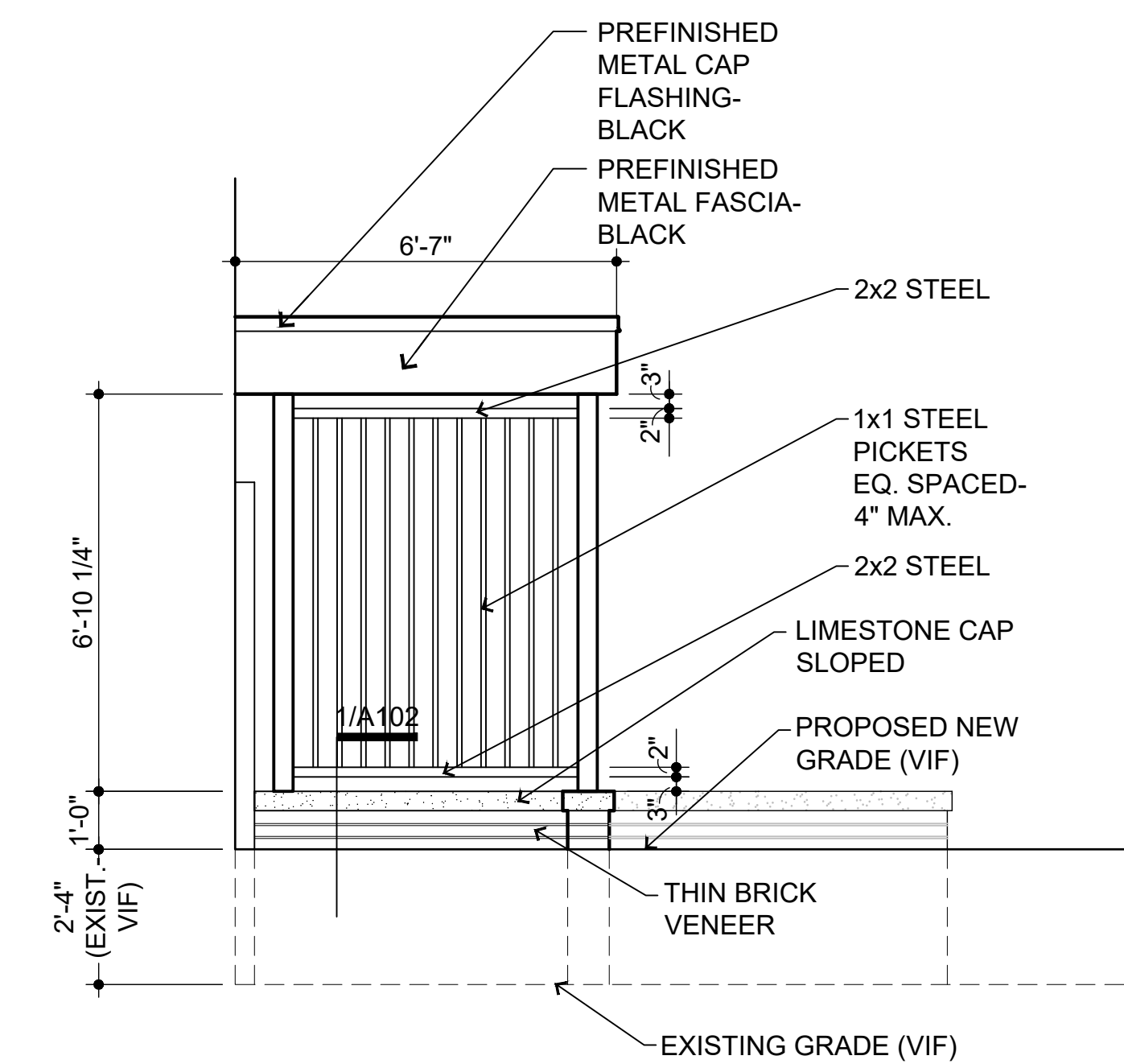
6/A101 framing plan

SCALE: 1/4"=1'-0"



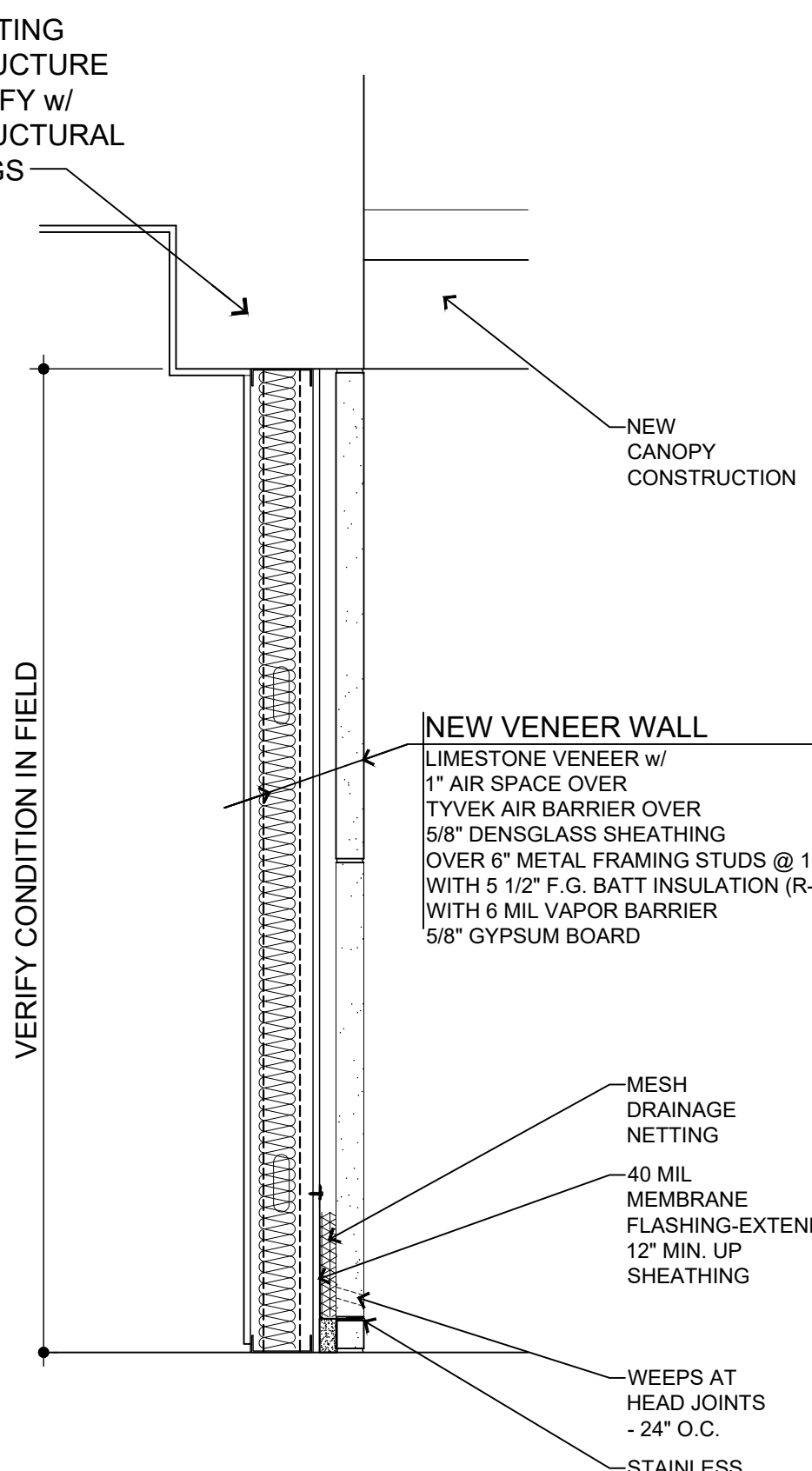
5/A101 roof plan

SCALE: 1/4"=1'-0"



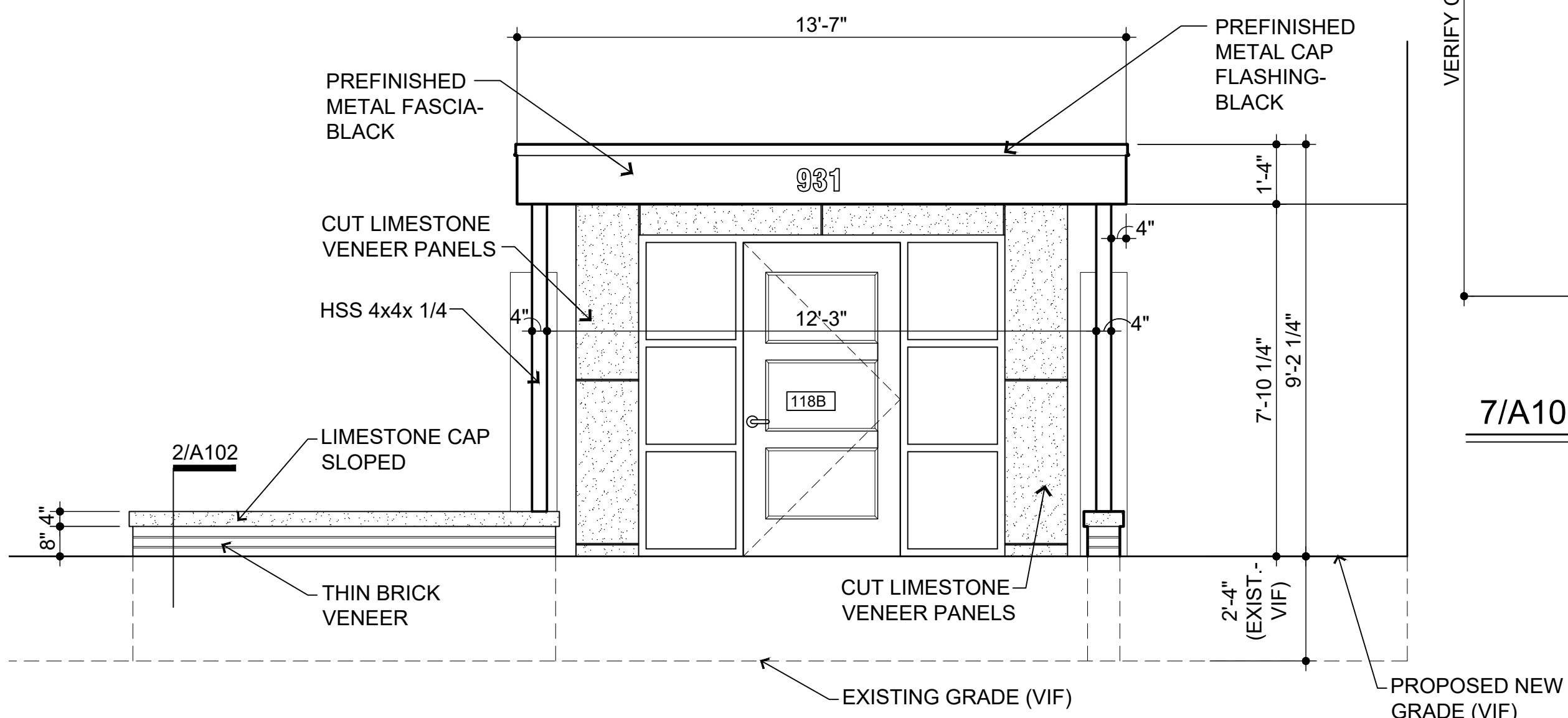
3/A101 southwest elevation

SCALE: 3/8"=1'-0"



7/A101 wall section

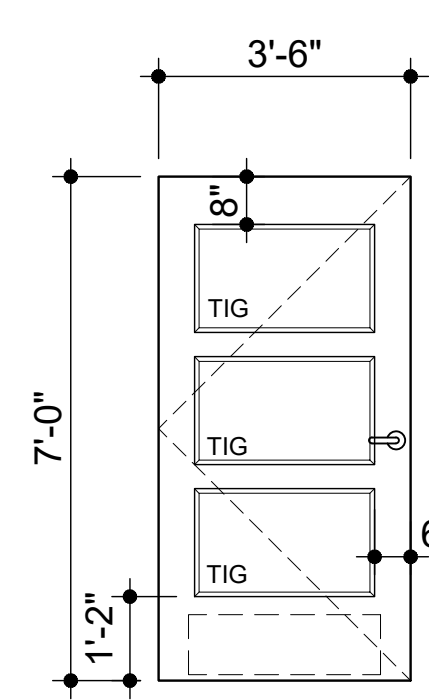
SCALE: 3/4"=1'-0"



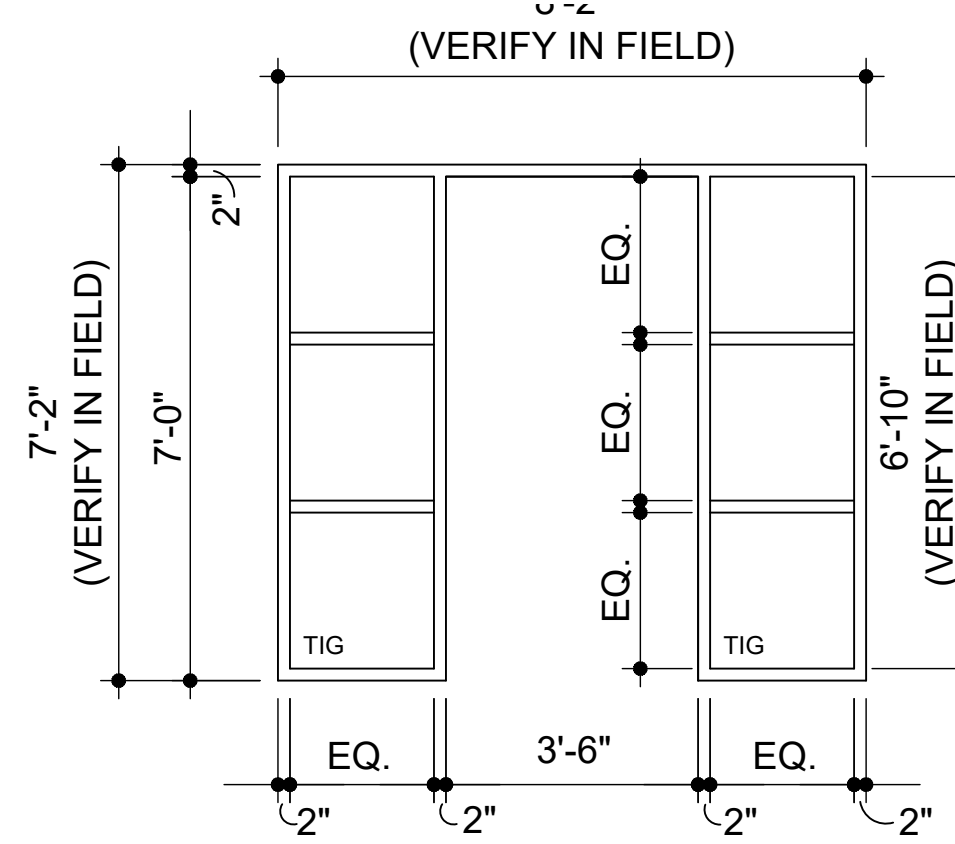
2/A101 northeast elevation

SCALE: 3/8"=1'-0"

DOOR SCHEDULE										
*ROUGH OPENINGS TO BE VERIFIED IN FIELD PRIOR TO INSTALLATION										
NO.	LOCATION	DOOR		FRAME		WIDTH x HEIGHT	THK'NESS	FIRE RATING	HARDWARE SET	REMARKS
		TYPE	MAT'L	TYPE	MAT'L					
118B	LOBBY - 118	1	HOLLOW METAL	A	HOLLOW METAL	3'-6" x 7'-0"	1 3/4"		13	TEMP. INSUL. GLASS, INSUL. CORE



1
INSUL. HOLLOW CORE METAL DOOR w/ 1" TEMP. INSUL. GLASS



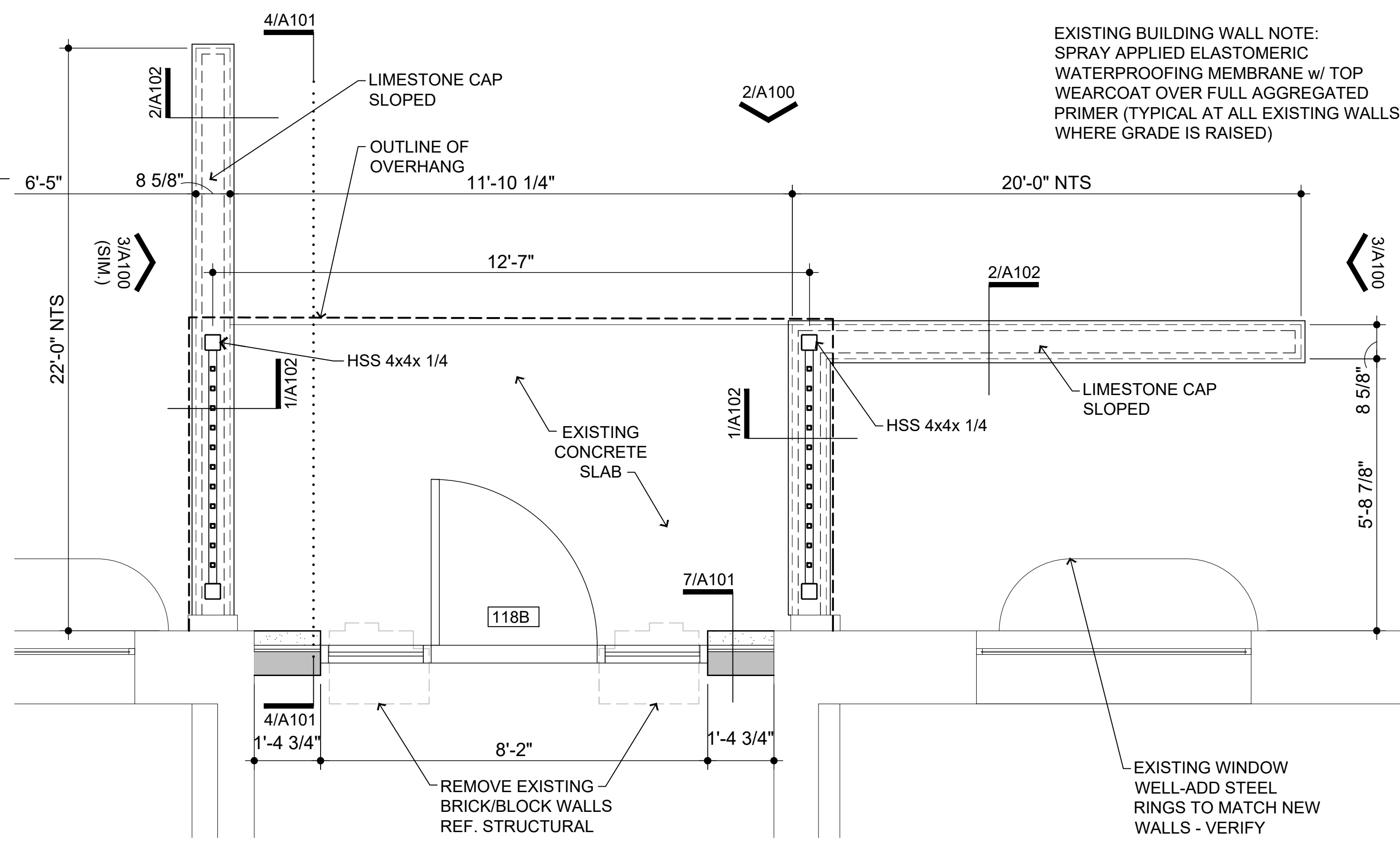
A
HOLLOW METAL w/ 2" HEAD & (2) 1" INSULATED TEMP. GLASS SIDE LITES

HARDWARE SET 13 - PANIC + ELECTRIC STRIKE X PULL TRIM [ACCESS CONTROL] + CLOSER

3 EA.	HINGES 35SSHB 4545 NRP	32D	PDQ
1 EA.	PANIC DEVICE 6201RA (03) (CD)	32D	PDO
1 EA.	RIM CYLINDER I5308 X I5207-1 PDQ2 (03)	26D	PDO
1 EA.	MORTISE CYLINDER I5307 X I5207-1 PDQ2 (CD)	26D	PDO
1 EA.	PULL 1167 X 4 134 MOUNT AT LOOSE ENDS	32D	DON JO
1 EA.	CLOSER 7101BC SCS X DPPA	689	PDQ
1 EA.	KICKPLATE 90 10 X 2" LDW B4E	32D	DON JO
1 EA.	THRESHOLD S205A	AL	REESE
1 EA.	SWEEP 323A -MOUNT PULL SIDE	AL	REESE
1 SET	WEATHERSTRIP 855C (MOUNT PRIOR TO CLOSER SHOE)	AL	REESE
1 EA.	RAIN DRIP 201C	AL	REESE
1 EA.	ACCESS CONTROL MODULE & CARD READER BY SECURITY VENDER	---	SEC VENDER
1 SET	RISER & WIRE DIAGRAM RPIHA080420	---	RPI
1 EA.	POWER SUPPLY 602RF	---	SDC
1 EA.	ELECTRIC STRIKE 4850 24VDC -FAIL SECURE	32D	TRINE

door schedule general notes:

- ALL DOORS SHALL HAVE HANDLES, PULLS LATCHES, AND OPERATING DEVICES WHICH DO NOT REQUIRE TIGHT GRASPING, TIGHT PINCHING OR TWISTING OF THE WRIST TO OPERATE. REFER TO SECTION 404.2.7 OF ICC / ANSI A117.1 - 2009.
- PRIMARY LOCKING AND LATCHING DEVICES ON DOORS SHALL BE MOUNTED A MINIMUM OF 34" TO A MAXIMUM OF 48" ABOVE FINISHED FLOOR HEIGHT. REFER TO SECTION 404.2.6 OF ICC / ANSI A117.1 - 2009.



1/A101 porch plan

SCALE: 1/2"=1'-0"

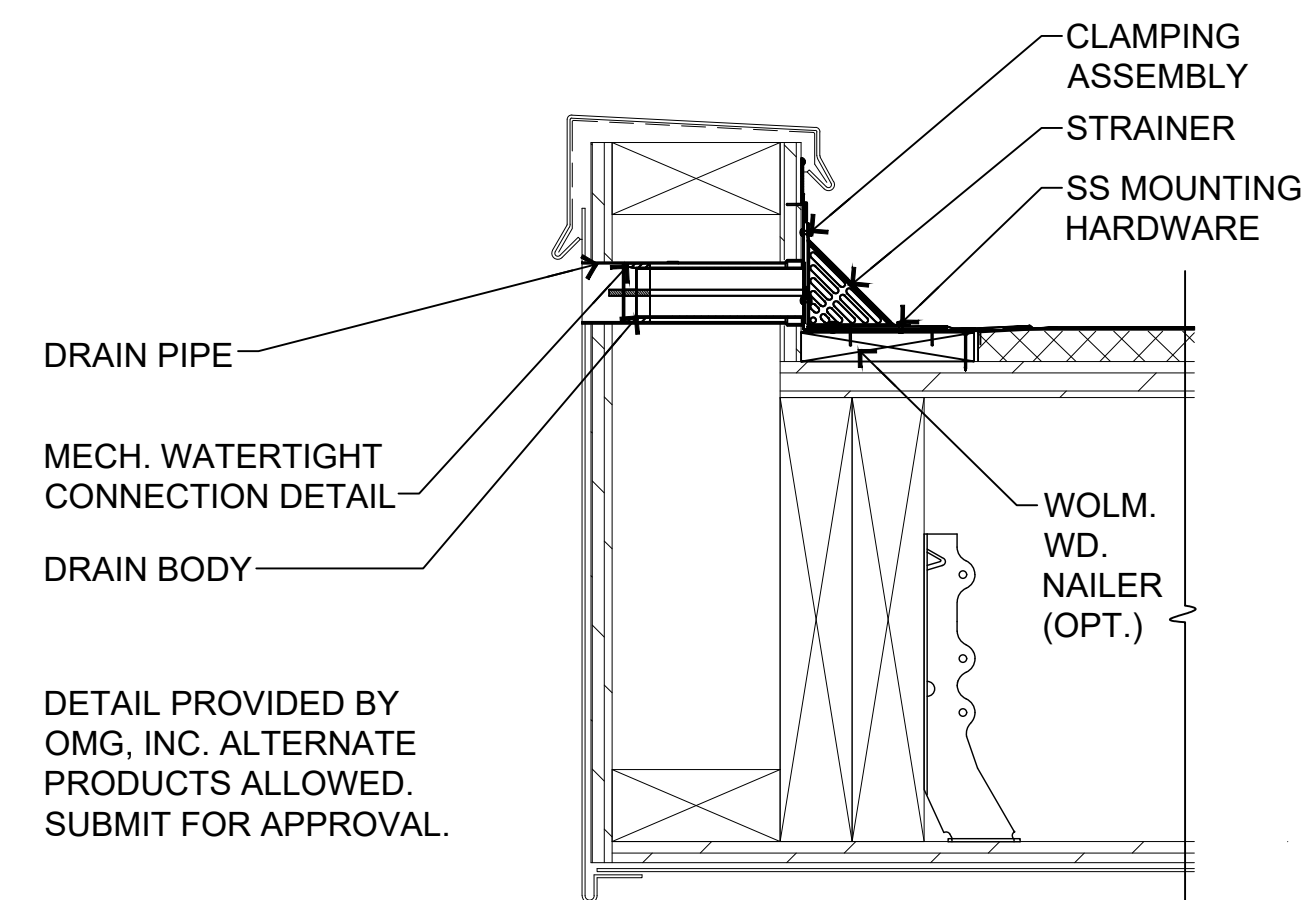
REVISIONS	DATE
05/03/21	
04/20/21	
03/05/21	
08/28/20	
08/13/20	

PROJECT:
Porch / Canopy
885 / 931 Covington Drive
Detroit, MI 48203

CLIENT:
RCI Group
300 Alton Road
Ste. 303
Miami Beach, FL 33139

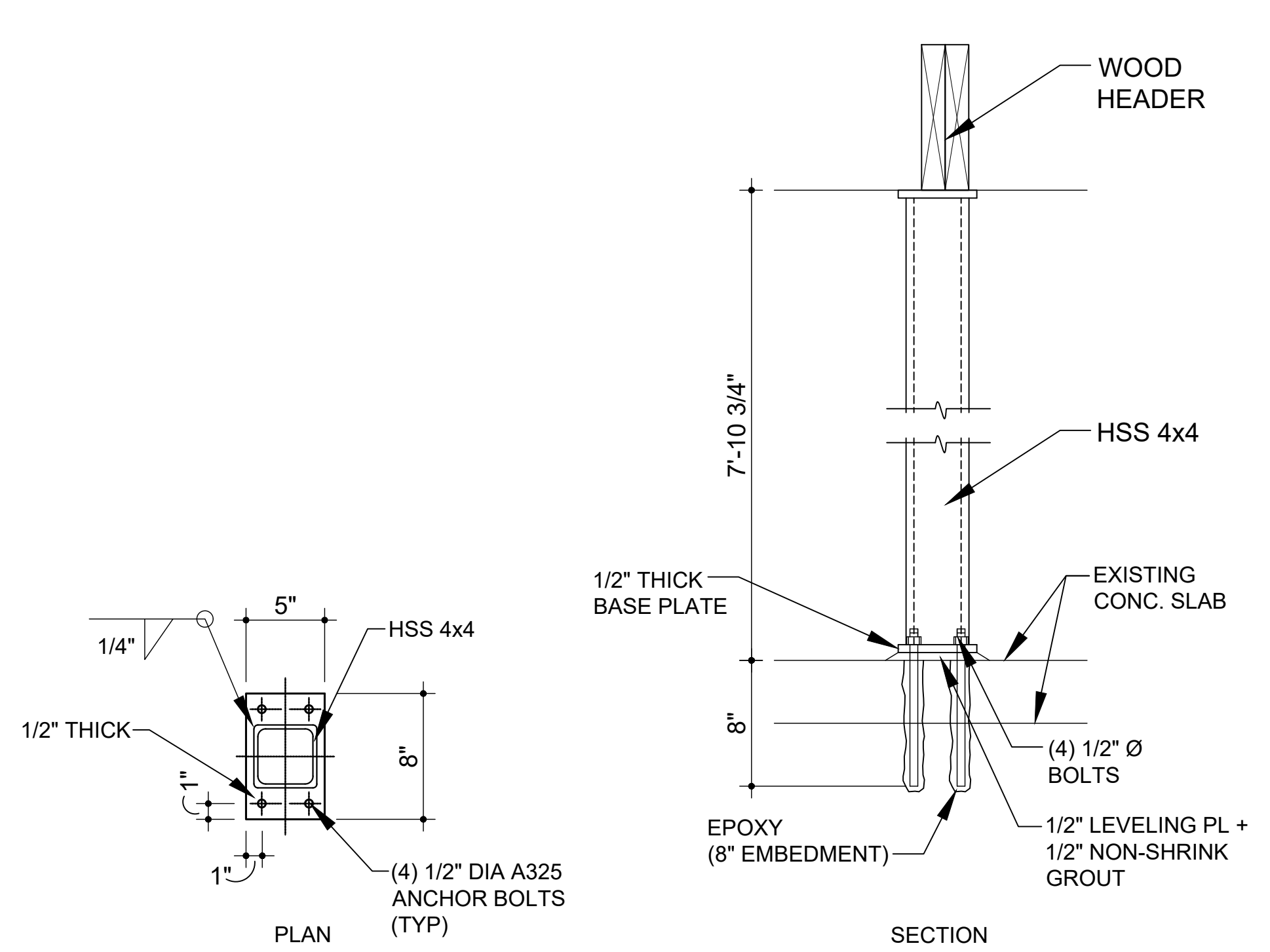
SHEET TITLE:
931 PLAN, ELEVATIONS & DOOR SCHEDULE

SHEET NUMBER:
A101



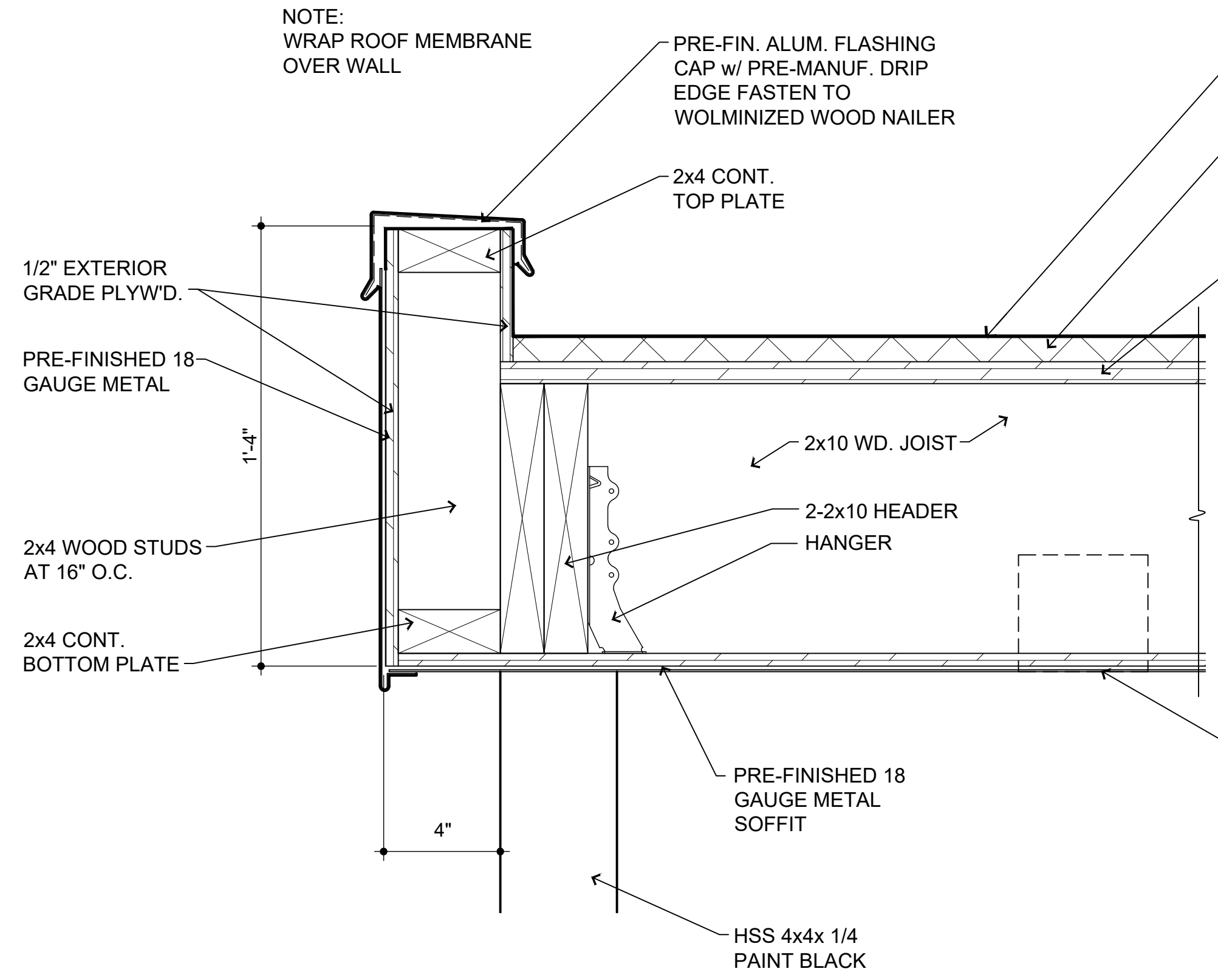
8/A102 scupper detail

SCALE: 3"=1'-0"



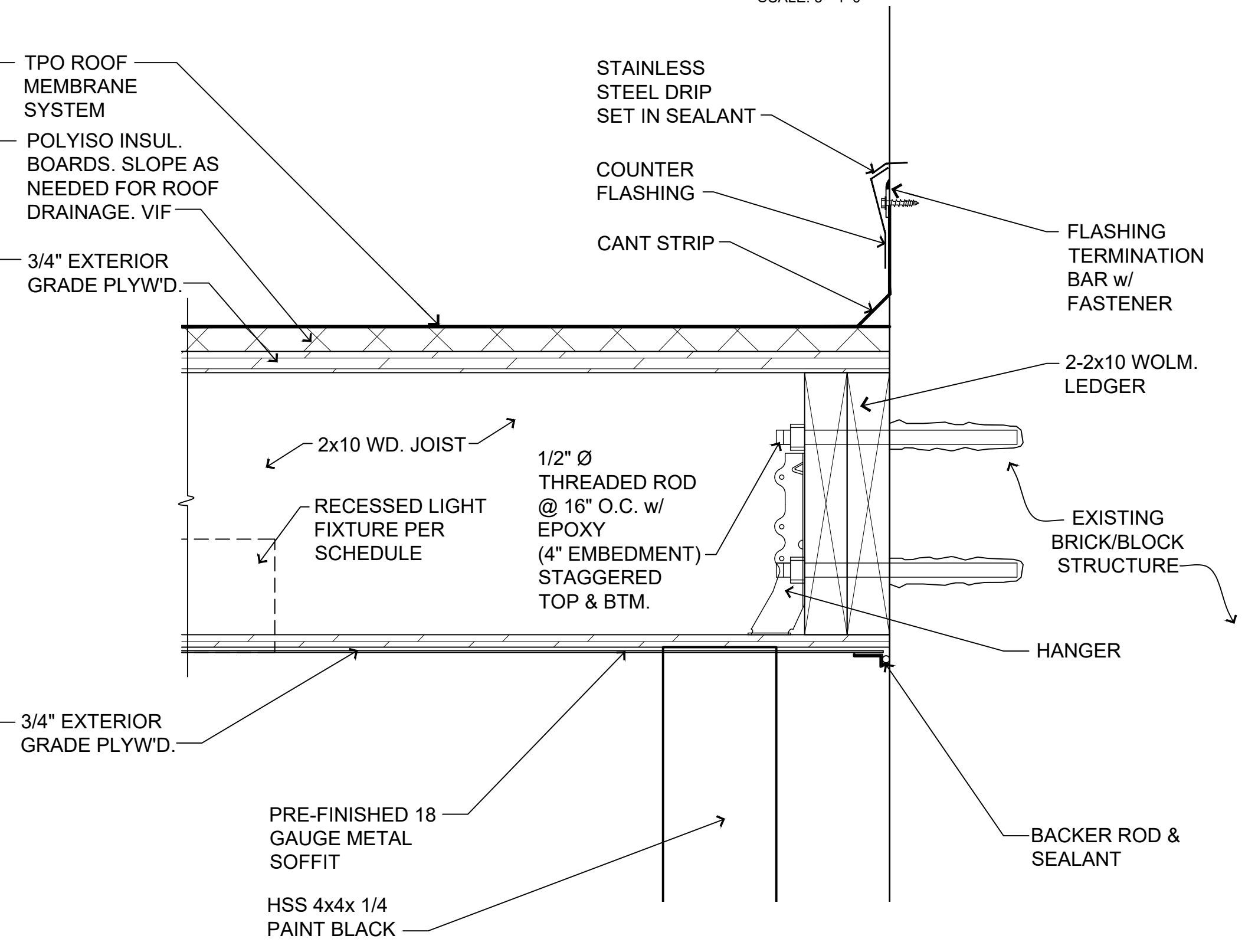
3/A102 steel column details

SCALE: 1 1/2"=1'-0"



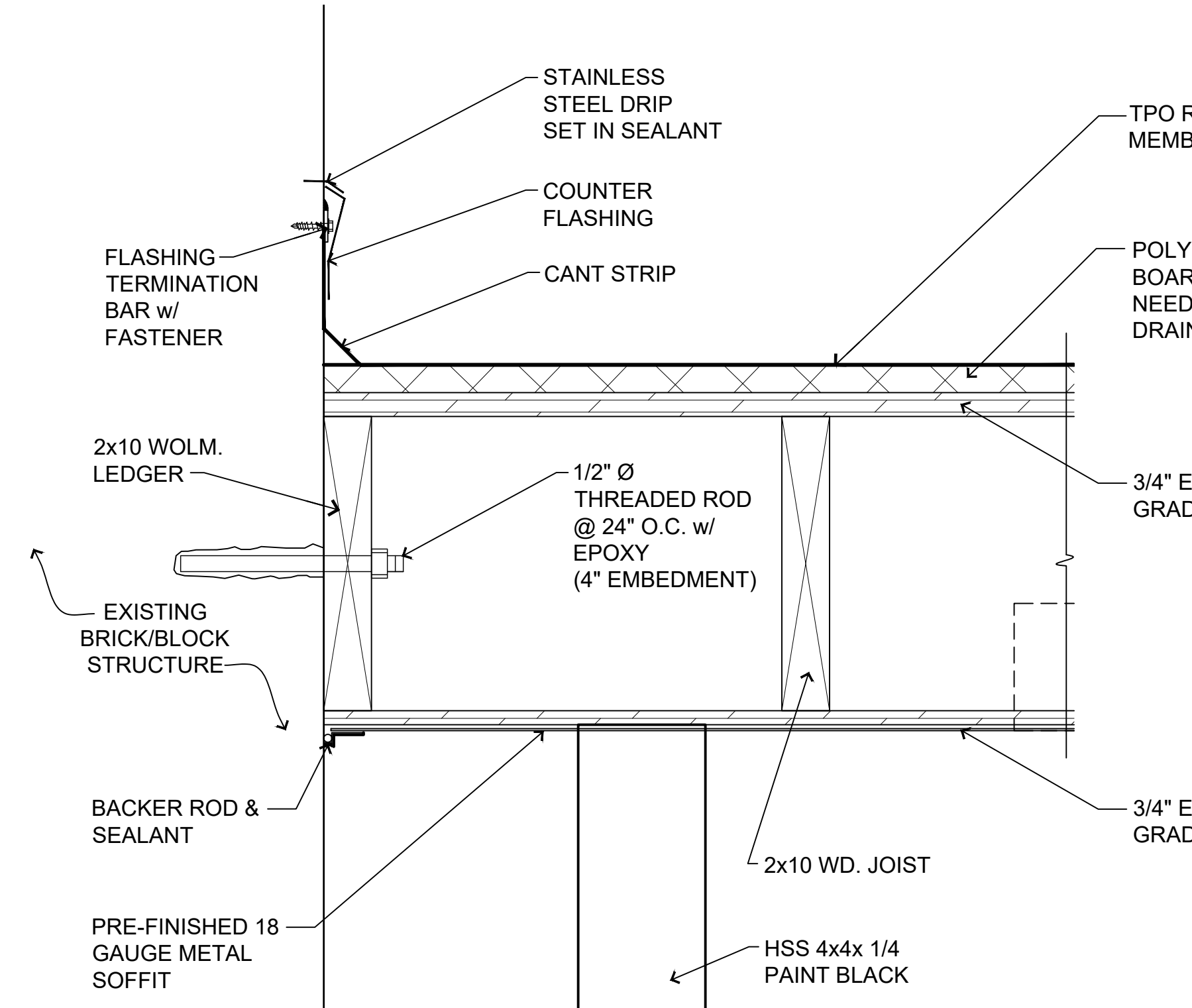
6/A102 detail

SCALE: 3"=1'-0"



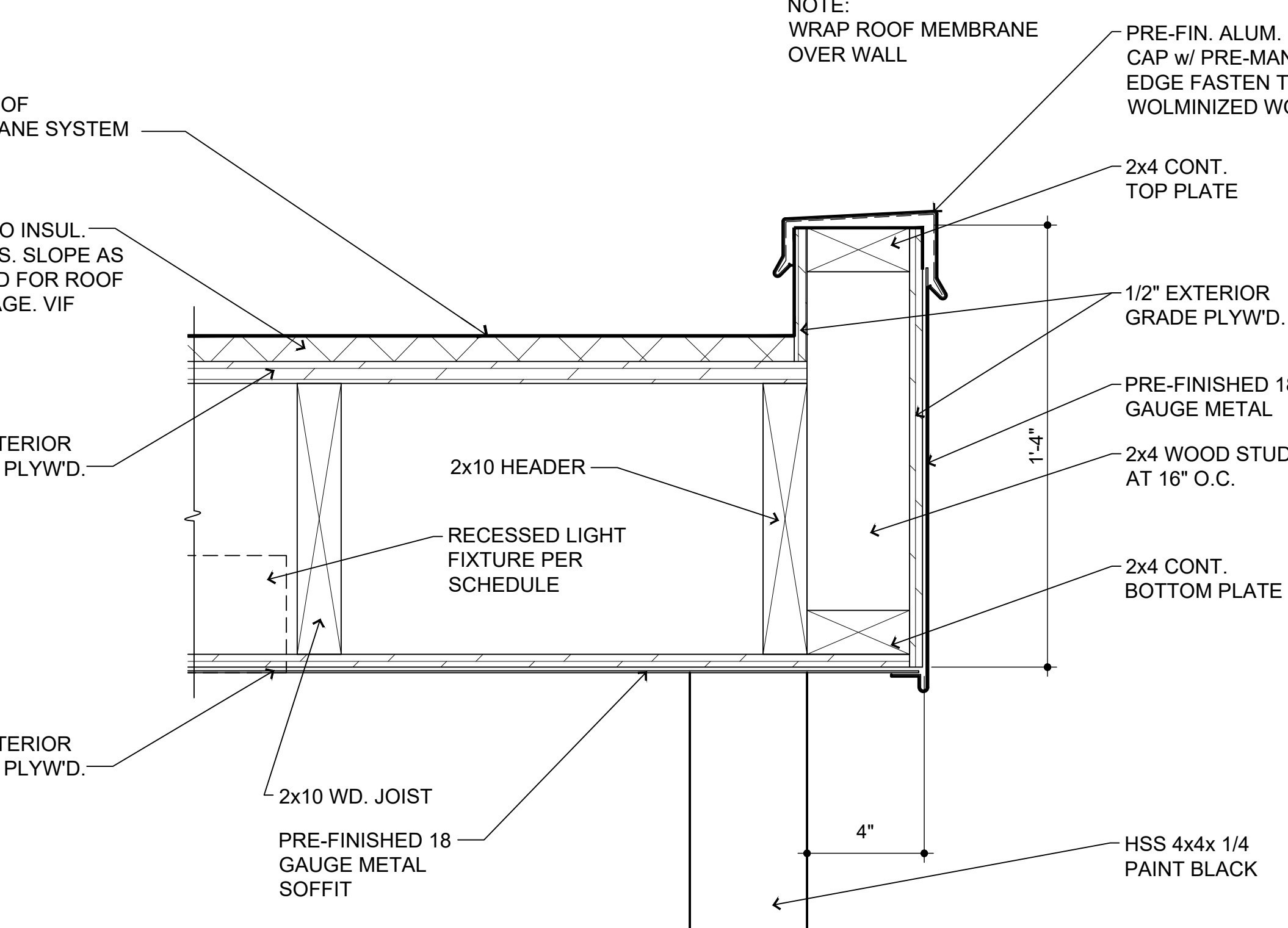
7/A102 detail

SCALE: 3"=1'-0"



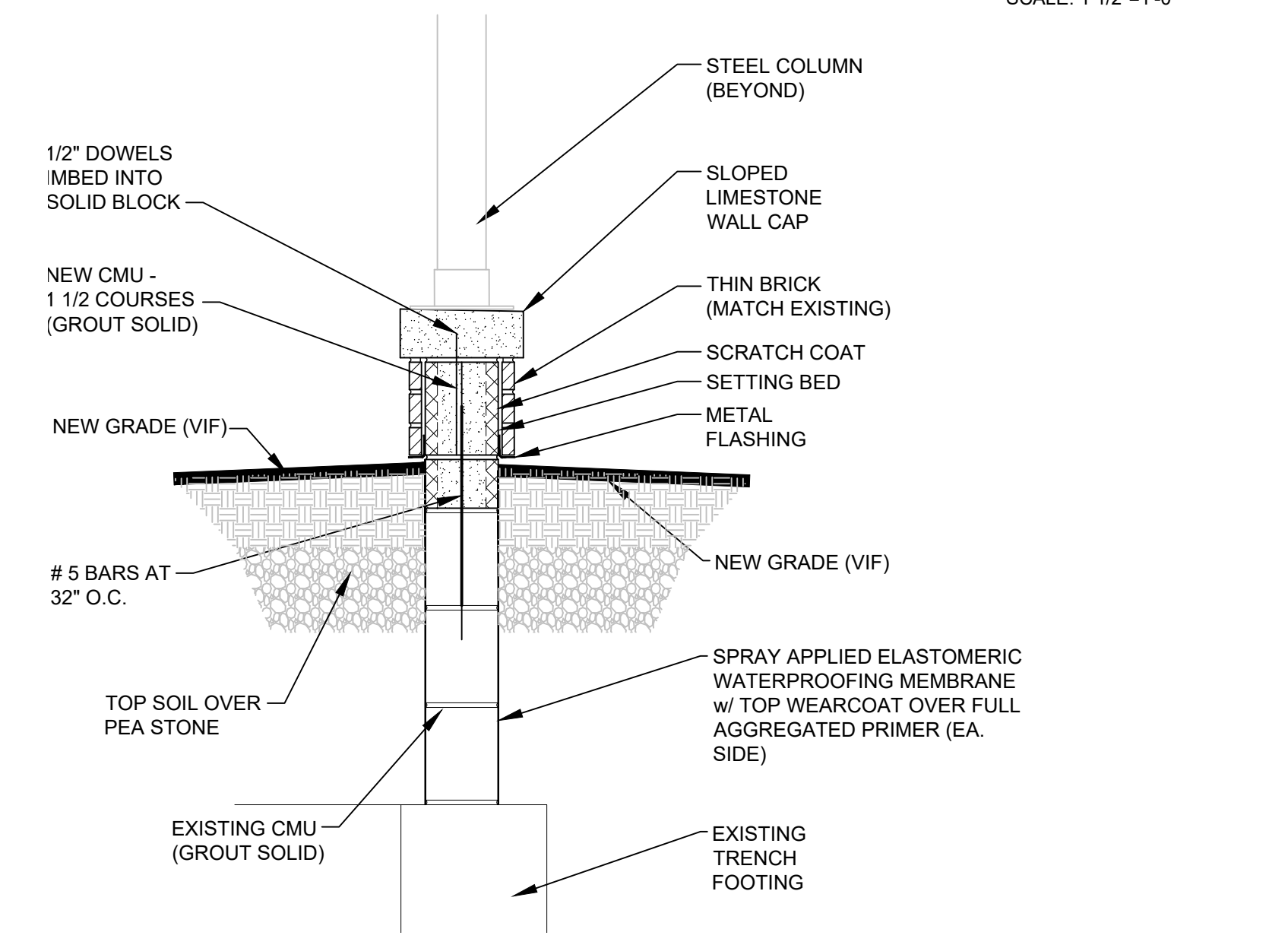
4/A102 detail

SCALE: 3"=1'-0"



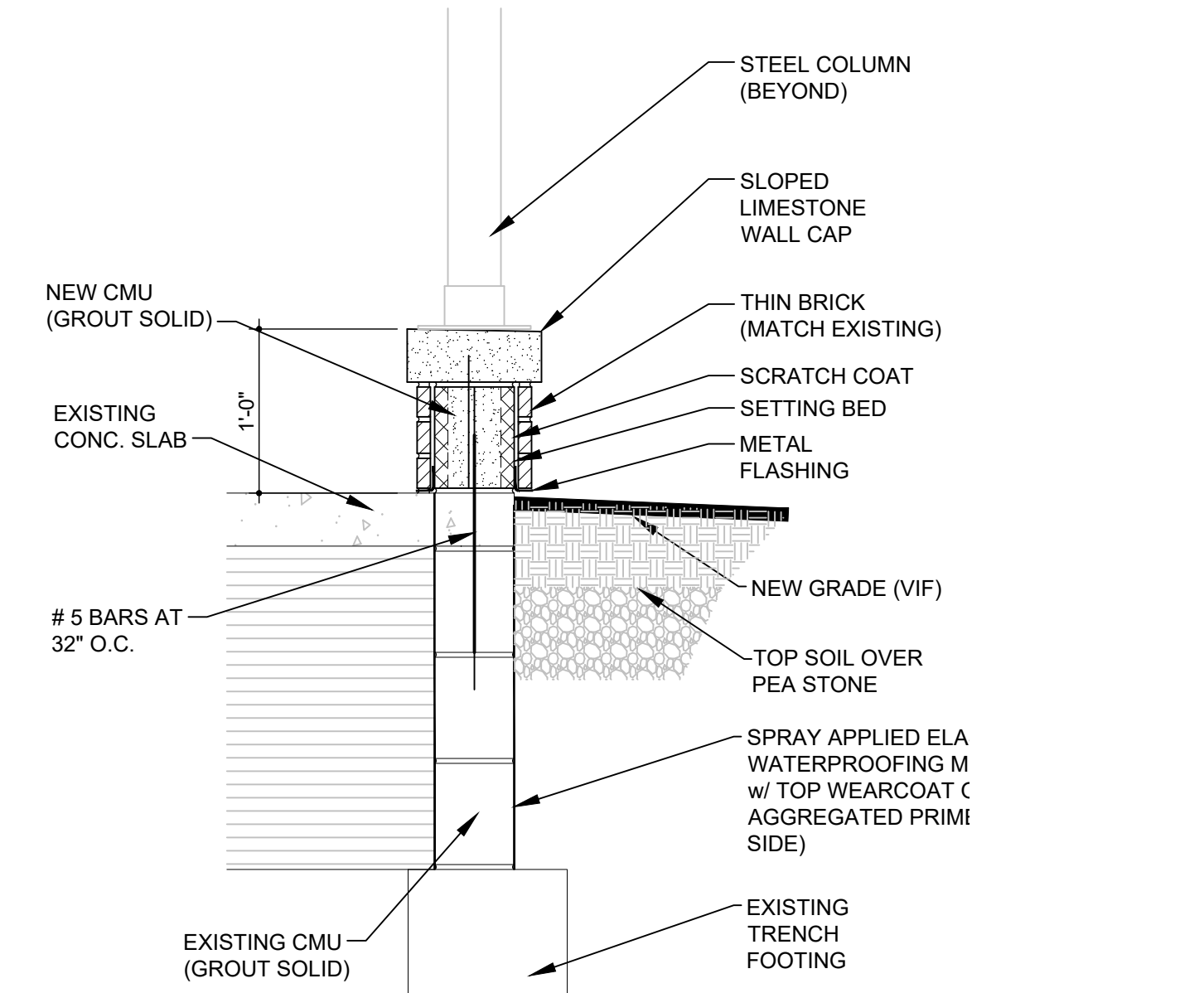
5/A102 detail

SCALE: 3"=1'-0"



2/A102 porch detail

SCALE: 1"=1'-0"



1/A102 porch detail

SCALE: 1"=1'-0"

REV.	SIDE LITES	03/05/21
BID		08/28/20
OWNER REVIEW		08/13/20
DESCRIPTION	DATE	
PROJECT:		
Porch / Canopy		
885 / 931 Covington Drive Detroit, MI 48203		
CLIENT:		
RCI Group 300 Alton Road Ste. 303 Miami Beach, FL 33139		
SHEET TITLE:		
DETAILS		
SHEET NUMBER:		
A102		