

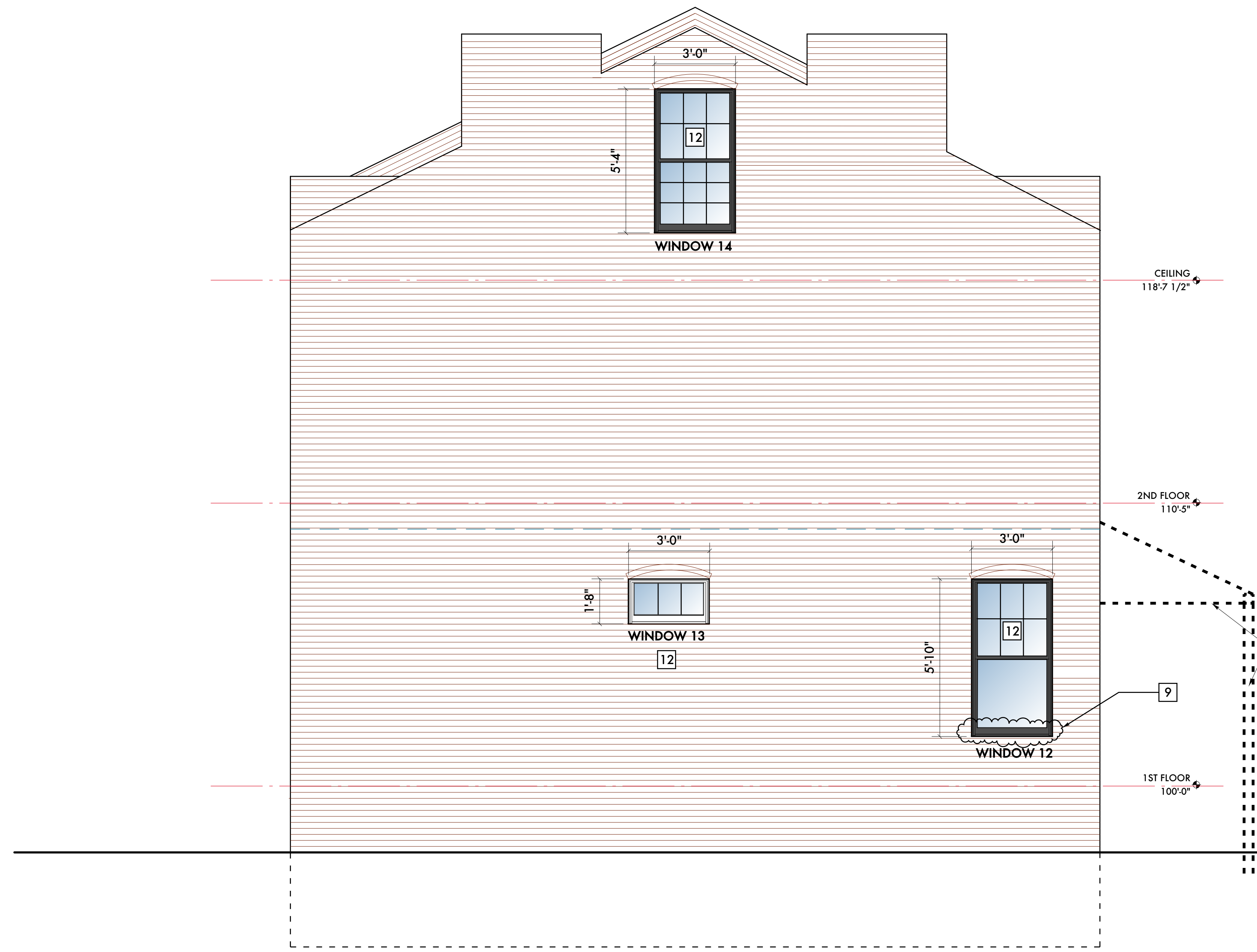
KEYED DEMOLITION & MASONRY REPAIR NOTES:

- 1 REBUILD EXISTING DAMAGED BRICK MASONRY WORK. REMOVE ANY DAMAGED BRICK AND REPLACE W/ SALVAGED BRICK
- 2 TUCK POINT THIS AREA
- 3 MASONRY HAS COLLAPSED IN THIS AREA. REBUILD WALL WHERE REQUIRED & TUCK POINT REMAINING DAMAGED AREAS.
- 4 REMOVE FLASHING EMBEDDED IN BRICK MASONRY, REPAIR AND TUCKPOINT MASONRY AFTER REMOVAL
- 5 EXISTING DOOR AND SURROUND TO REMAIN
- 6 RELOCATE WINDOW OPENING AS SHOWN, REMOVE CAULKING AND FILLER MATERIALS, REMOVE AND RE-TOOTH IN BRICKS TO CREATE THE NEW OPENING SIZE AND LOCATION
- 7 REPAIR CRACKS IN MASONRY, TUCKPOINT ANY CRACKS IN MASONRY JOINTS, REMOVE AND REPLACE DAMAGED BRICKS W/ SALVAGED BRICKS
- 8 WINDOW OPENING MISSING SHELF ANGLE AT WINDOW HEAD
- 9 WOOD WINDOW SILL IS DAMAGED
- 10 REMOVE EXISTING GUTTERS & DOWNSPOUTS
- 11 ACCESS DOOR TO CRAWLSPACE, REMOVE EXISTING FIBERGLASS COVER
- 12 EXISTING WINDOW OPENING TO REMAIN
- 13 REMOVE TEMPORARY STEPS
- 14 REMOVE EXISTING SKYLIGHT
- 15 REMOVE ROTTEN WINDOW SILL
- 16 REMOVE EXISTING SHINGLE ROOF
- 17 CREATE NEW WINDOW IN NEW WINDOW OPENING IN EXISTING MASONRY WALL. PROVIDE 4 X 4 X 1/4 SHELF ANGLE W/ FLASHING AT HEAD OF NEW WINDOW OPENING. TOOTH IN SALVAGED BRICK AND TURN THE CORNER OF THE OPENING W/ BRICK. CREATE A UNIFORM EDGE FOR THE WINDOW OPENING TO RECEIVE THE WINDOW.
- 18 CONSTRUCTION A TEMPORARY WINTER SHELTER FOR MASONRY REPAIRS

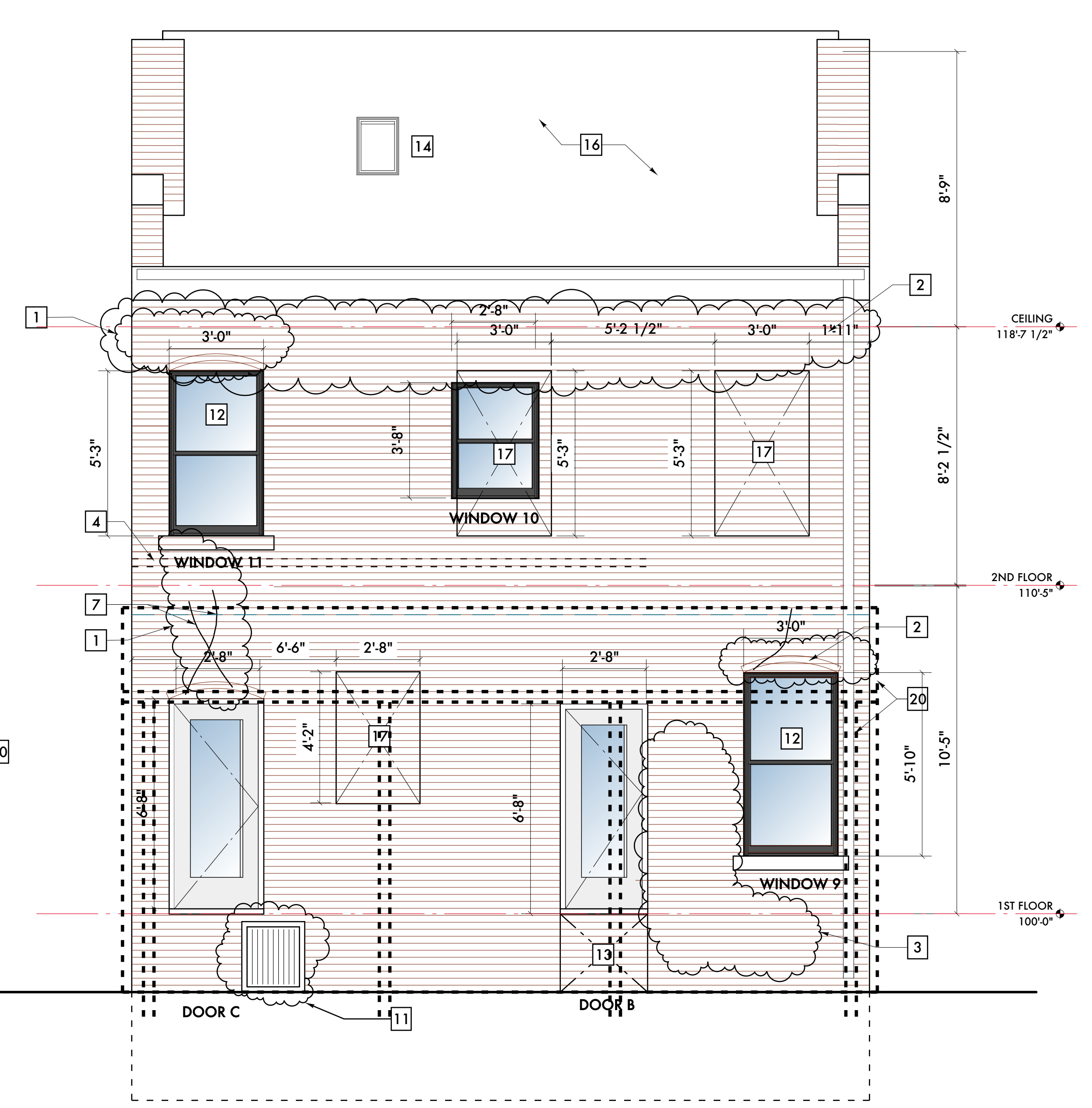
HISTORIC STAFF APPROVAL REQUEST

HISTORIC STAFF APPROVAL REQUEST

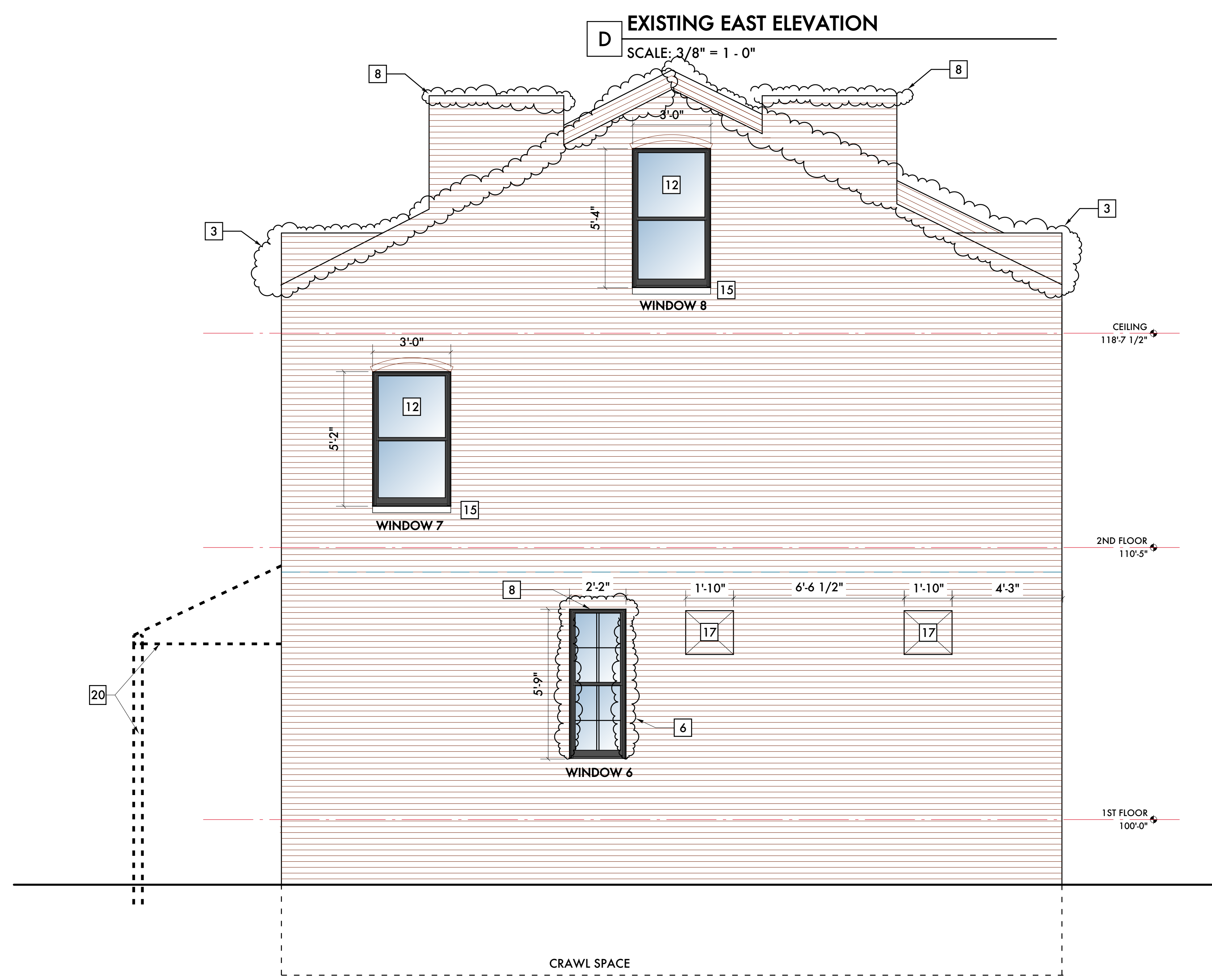
HISTORIC STAFF APPROVAL REQUEST



D EXISTING EAST ELEVATION
SCALE: 3/8" = 1 - 0"



C EXISTING REAR (NORTH) ELEVATION
SCALE: 3/8" = 1 - 0"



B EXISTING WEST ELEVATION
SCALE: 3/8" = 1 - 0"



A EXISTING LABROSSE ELEVATION (SOUTH)
SCALE: 3/8" = 1 - 0"

EXISTING WINDOW INVENTORY	
MARK	DESCRIPTION / NOTES
WINDOW #1	DIFFERENT SIZE SASHES TOP & BOTTOM, SASHES HAVE DIFFERENT SIGHT LINE SHAPES, MISSING MUNTINS, EXTERIOR STORM WINDOW
WINDOW #2	DIFFERENT SIZE SASHES TOP & BOTTOM, SASHES HAVE DIFFERENT SIGHT LINE SHAPES, MISSING MUNTINS, EXTERIOR STORM WINDOW
WINDOW #3	MISSING SASHES & MUNTINS, ONLY EXTERIOR STORM WINDOW
WINDOW #4	MISSING SASHES, ONLY EXTERIOR STORM WINDOW IN OPENING
WINDOW #5	MISSING SASHES, ONLY EXTERIOR STORM WINDOW IN OPENING
WINDOW #6	WINDOW OPENING CREATED AFTER HOUSE WAS BUILT, NOT ORIGINAL WINDOW IN OPENING, SEE MUNTION PROFILES
WINDOW #7	MISSING SASHES COMPLETELY, ONLY EXTERIOR STORM WINDOW
WINDOW #8	MISSING SASHES COMPLETELY, ONLY EXTERIOR STORM WINDOW
WINDOW #9	DIFFERENT SIZE SASHES TOP & BOTTOM, SASHES HAVE DIFFERENT SIGHT LINE SHAPES, MISSING MUNTINS, EXTERIOR STORM WINDOW
WINDOW #10	MISSING BOTTOM SASH, MISSING WINDOW SILL AND MISSING MUNTINS, EXTERIOR STORM WINDOW
WINDOW #11	DIFFERENT SIZE SASHES TOP & BOTTOM, MISSING MUNTINS AT BOTTOM SASH
WINDOW #12	THE ONLY, COMPLETE WINDOW IN THE HOUSE, ORIGINAL TOP & BOTTOM SASHES, BOTTOM SASH MISSING MUNTINS
WINDOW #13	FIXED WINDOW, ORIGINAL SASH & MUNTINS
WINDOW #14	DIFFERENT SIZE TOP & BOTTOM SASHES, BOTTOM SASH MISSING MUNTINS

02/03/22	Historic Commission
01/27/22	Permit - BLD2022-00378
01/10/22	Permit
12/22/21	Historic Commission
12/15/21	Historic Staff
10/07/21	Owner Review
Date:	Issued For:

1356 Labrosse
Historic Renovation

1356 Labrosse
Detroit, Michigan 48226

studiozONE : DETROIT

architectural
urban
interior DESIGN

350 Madison Avenue
4th Floor
Detroit, Michigan 48226
studiozonedetroit.com
313.447.3790 (p)
jpb@warehouse.com

Project Number: 2021 - 15
Sheet Title:



EXISTING & DEMOLITION ELEVATIONS