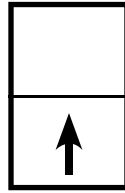




QUAKER
COMMERCIAL WINDOWS AND DOORS



H503 Series
AW-PG50
3 1/4" Frame Depth
Single Hung

H503 SERIES SINGLE HUNG

The Quaker Historical H503 Series Single Hung window is ideal for a variety of applications including - Historical, Landmarks, Institutions, Education, Apartments and Assisted Living.

FEATURES

- ◇ Commercial Framing System
 - 3 1/4" main frame
 - 0.062" wall thickness of interior and exterior walls
- ◇ Thermally Enhanced Design
 - Azon pour and debridge thermal break is 1/2" wide in all main frame and vent rail extrusions
- ◇ Glazing
 - 5/8" insulated glass
- ◇ Hardware
 - Gravity latch
- ◇ Screen
 - Extruded aluminum screen frame with BetterVue™ mesh

BENEFITS

- ◇ The capacity to match exterior colors for unique project facades
- ◇ The ability to facilitate large sizes for taller and wider window openings
- ◇ Historically accurate panning and trim styles to help your project meet Historic Preservation codes

PERFORMANCE

- ◇ Structural & Thermal (test reports and thermal simulations available upon request)

Model	Single Hung
AAMA/WDMA/CSA 101/IS.2/A440-08 Rating	AW-PG50
Structural Load P.S.F.	75.19
Air at 50 MPH (cfm/ft ²)	0.17
Water (No Penetration) P.S.F.	10.03
U-Value (with Low-E and Argon)	0.40 - 0.49
SHGC (with Low-E and Argon)	0.14 - 0.31

Window test size: 60" x 99"

Operating Force: 25.3 lbf (maintain motion), 14 lbf (latches)

OPTIONS

- ◇ Available Configurations
 - Single Hung
 - ~~Oriel single hung~~
- ◇ ~~Muntin Choices~~
 - ~~Internal or simulated divided lites available~~
- ◇ Limited travel hardware
- ◇ Screen
 - Extruded aluminum screen frame with aluminum wire mesh
 - Extruded aluminum screen frame with sunscreen mesh
 - Extruded aluminum screen frame with stainless steel 0.009" thickness mesh
 - Security screen
- ◇ Glazing
 - ~~Capillary tubes~~
 - ~~Argon gas~~
 - Wide variety of glazing, tinting and thickness options
- ◇ Panning & Trim Choices
 - Wide variety of panning, receptor and trim available
- ◇ Mulling
 - Wide variety of structural mulls
- ◇ ~~Specialty~~
 - ~~Attached exterior or interior storm window~~
 - Extension jambs
 - Screen track cut-out
 - Ogee lugs



Our products are tested to the standards of and certified by the American Architectural Manufacturer's Association, the National Fenestration Rating Council and the Window & Door Manufacturers Association.



QUAKER
COMMERCIAL WINDOWS AND DOORS

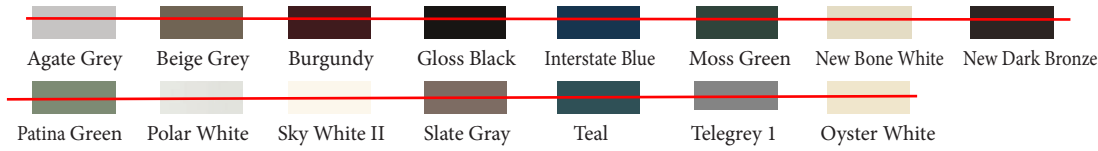
ARCHITECTURAL PAINT COATINGS AND FINISHES

◇ Baked on powder coat finish meets ANSA/AAMA 2604 specs and is available in unlimited colors

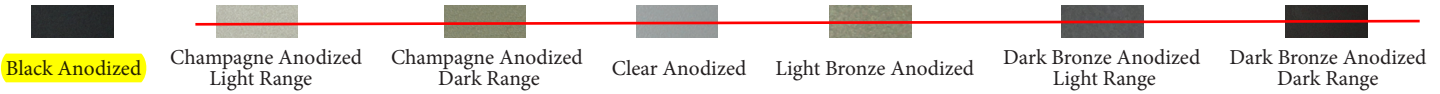
- 11 Popular Colors



- 15 Impressive Colors



- 7 Resemble Colors (painted finish resembling anodized)



- Unlimited Custom Colors

~~◇ ANSA/AAMA 2605 powder coat finishes~~

~~◇ AAMA 611-98 Class I clear and tinted anodized finishes~~

* Printed colors shown here may not accurately depict actual painted colors. Color samples are available upon request.

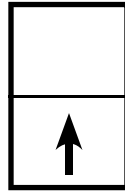
Our products are tested to the standards of and certified by the American Architectural Manufacturer's Association, the National Fenestration Rating Council and the Window & Door Manufacturers Association.



QUAKER
COMMERCIAL WINDOWS AND DOORS



QUAKER
COMMERCIAL WINDOWS AND DOORS

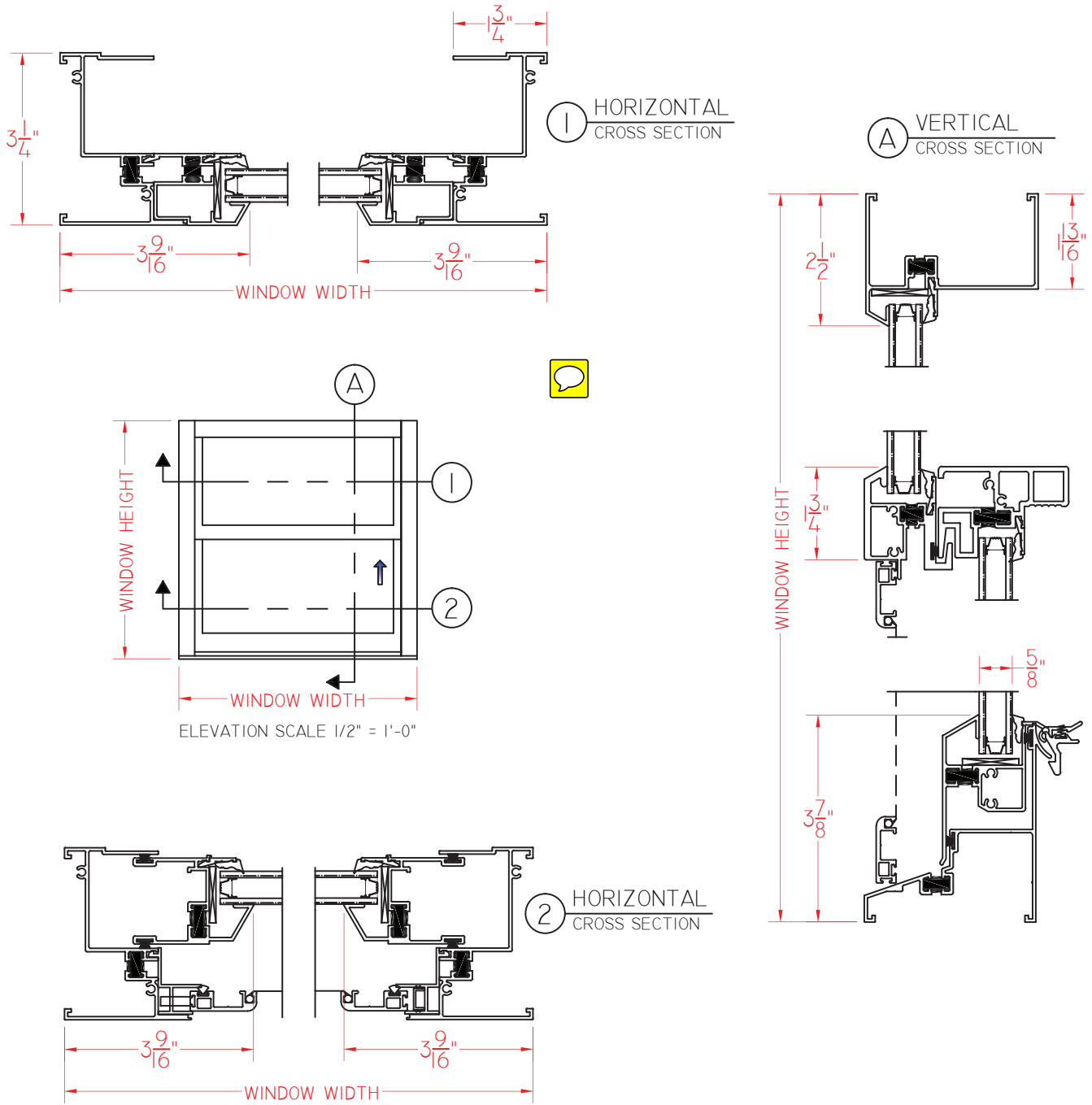


Historical
SERIES

**H503 Series
AW-PG50
3 1/4" Frame Depth
Single Hung**

H503 SERIES SINGLE HUNG

This document contains confidential and proprietary information intended for the private use of Quaker.
© 2016 Quaker Window Products Co., INC. All rights reserved.
Quaker reserves the right to change any/all designs without notice. Due to periodic re-certification requirements, result shown may vary.



Our products are tested to the standards of and certified by the American Architectural Manufacturer's Association, the National Fenestration Rating Council and the Window & Door Manufacturers Association.



QUAKER
COMMERCIAL WINDOWS AND DOORS