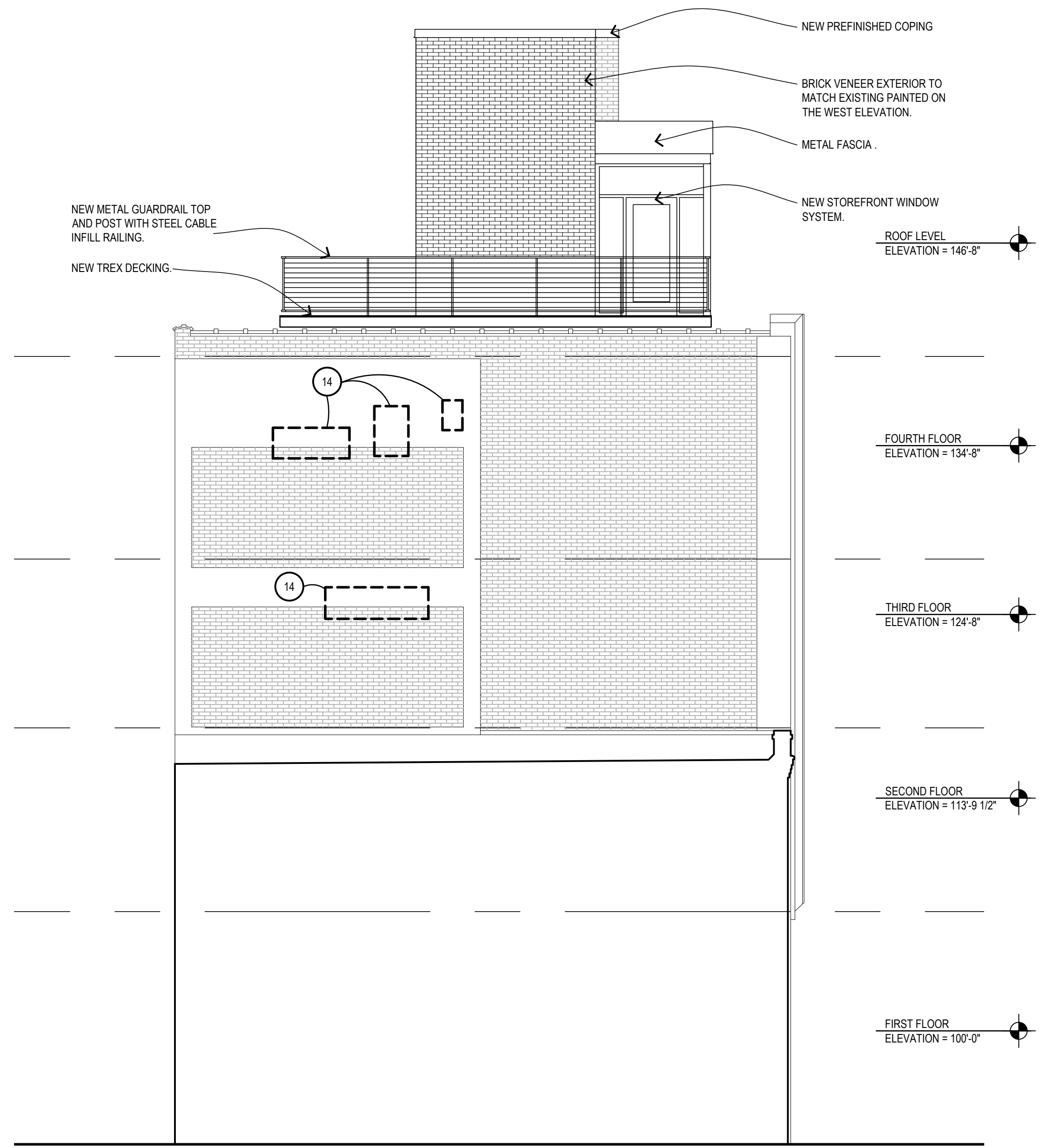


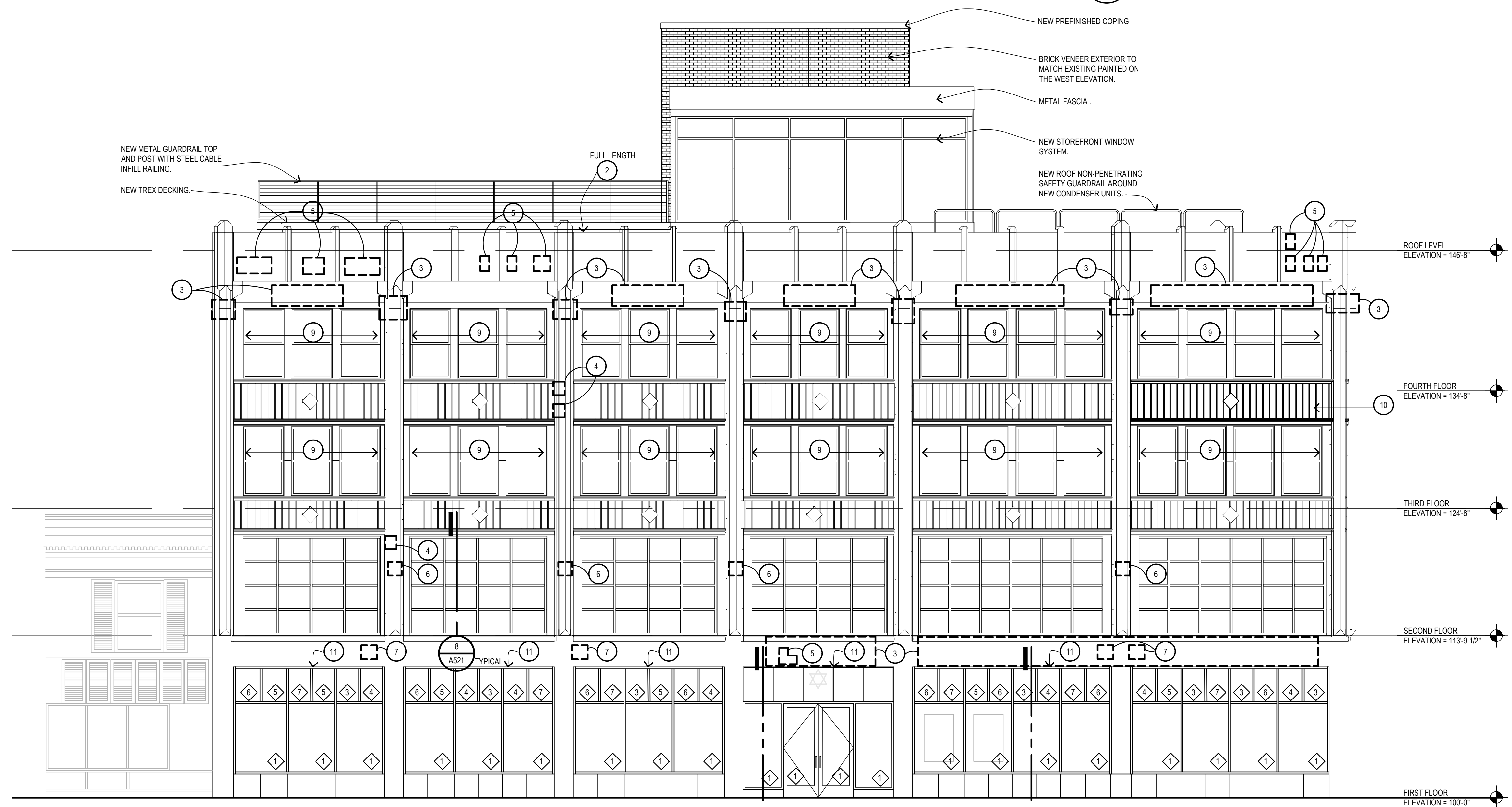


Isaac Agree
Downtown Synagogue
1457 Griswold
Detroit, Michigan



- EXTERIOR ELEVATION RENOVATION KEYNOTES**
- TUCKPOINT ALL JOINTS WITHIN INDICATED AREA.
 - REMOVE TOP PARAPET CAP JOINTS FULL LENGTH OF WALL. INSTALL BACKER RODS AND UV RESISTANT SEALANT.
 - REMOVE LIMESTONE PANELS. CLEAN RUSTED STEEL LINTEL. INSTALL RUST INHIBITIVE PRIMER, THEN EPOXY PAINT AND REINSTALL LIMESTONE PANELS.
 - REMOVE METAL BRACKET AND PATCH STONE.
 - PATCH STONE WITH CATHEDRAL STONE "RESTORATION MORTAR" (OR EQUAL PRODUCT). MATCH COLOR OF STONE.
 - DRAIN PIPE TO REMAIN.
 - INSTALL DUTCHMAN LIMESTONE PATCH AT FORMER ELECTRICAL BOX LOCATION.
 - DEMOLISH FIRST FLOOR BRICK INFILL AND TRANSOM (INCLUDING ENTRANCE) - SEE DEMOLITION ELEVATIONS
 - REHABILITATE DOUBLE HUNG WOOD WINDOWS BY REGLAZING. TIGHTENING/GLUING OF ANY LOOSE JOINTS. INSTALL WEATHERSTRIPPING IN JAMBS. STRIP PAINT. INSTALL NEW SASH CHAINS. PRIME/PAINT. INSTALL EXTERIOR ALUMINUM STORM WINDOWS TO MATCH WINDOW COLOR.
 - INSTALL CUSTOM FIBERGLASS CORRUGATED SPANDREL PANEL TO MATCH ADJACENT EXISTING PANELS.
 - CLEAN EDGE AND LOWER FACE OF RUSTED STEEL LINTEL. APPLY RUST INHIBITIVE PRIMER, EPOXY PAINT.
 - REMOVE ELECTRICAL CONDUIT. PATCH AND ANCHOR HOLES IN STONE.
 - REPLACE DAMAGED BRICK.
 - PATCH CONCRETE BEAM/SPANDREL SURFACE.

2
A400
3/16" = 1'-0"
EXTERIOR ELEVATION RENOVATION - SOUTH



1
A400
3/16" = 1'-0"
EXTERIOR ELEVATION RENOVATION - EAST

GENERAL EXTERIOR ELEVATION NOTES

- REFER TO DOOR SCHEDULES AND DETAILS FOR ADDITIONAL INFORMATION.
- ALL EXTERIOR SEALANT COLORS TO MATCH MATERIAL BEING SEALED AND CONFIRMED WITH THE ARCHITECT PRIOR TO SEALING.
- CONTRACTOR TO COORDINATE LOCATION OF ALL EXHAUST AND INTAKE LOUVERS WITH THE MECHANICAL DOCUMENTS. ALL FRESH AIR INTAKES TO BE 4'-0" MINIMUM ABOVE FINISH GRADE AND 10'-0" MINIMUM FROM EXHAUST OPENINGS.
- SEAL ALL PENETRATIONS, GAPS, SPACES, JOINTS, ETC. FOR ENTIRE EXTERIOR FACE OF THE BUILDING.
- PROVIDE AND INSTALL FLASHING AND WEEP VENTS IN EXTERIOR MASONRY WALLS AT SLOPE ANGLES. LEDGES, WINDOW AND DOOR HEAD AND SILLS @ 24" O.C. AND AT ALL OTHER LOCATIONS INDICATED OR OTHERWISE REQUIRED.
- FORM END DAMS AT HORIZONTAL FLASHING TERMINATIONS TO PREVENT MOISTURE ENTRY INTO THE WALL CAVITY. AT HEAD AND SILLS OF OPENINGS, TURN UP FLASHING NOT LESS THAN 2" TO FORM END DAMS.
- REFER TO THE SPECIFICATIONS MANUAL FOR ADDITIONAL INFORMATION.
- SURFACE MOUNTED BUILDING SIGNAGE SHOWN FOR REFERENCE ONLY. FINAL DESIGN SHALL BE SUBMITTED FOR REVIEW WITH SIGNAGE FABRICATION PACKAGE.
- PROVIDE ADDITIONAL LAYER OF AIR BARRIER AND OVERLAP 2" MINIMUM EACH SIDE BETWEEN CONCRETE, STEEL AND EXTERIOR SHEATHINGS WITH INTEGRAL AIR BARRIER.
- PROVIDE WATER STOP BETWEEN MEMBRANE AND METAL FLASHING. METAL COPING, ETC. IN WHICH THE ROOF MEMBRANE DOES NOT EXTEND UP MORE THAN 1'-0" VERTICALLY.
- PROVIDE CLEANING FOR ALL EXISTING MASONRY TO REMAIN.
- PROVIDE AND ALLOWANCE FOR TUCK POINTING OF MASONRY FOR (X) SQUARE FEET OF MASONRY IN THE BASE BID AND UNIT PRICING PER SQUARE FOOT OF TUCK POINTING BEYOND THE (X) SQUARE FEET.
- REMOVE AND REPLACE ALL EXISTING SEALANT JOINTS ON THE EXISTING BUILDING TO REMAIN. JOINT REPLACEMENT TO INCLUDE BUT IS NOT LIMITED TO MASONRY CONTROL JOINTS/MOVEMENT JOINTS, WINDOW PERIMETER SEALANT, SIDEWALKS TO BUILDING JOINTS, ETC.
- PROVIDE MASONRY SEALER ON ALL EXISTING EXTERIOR MASONRY TO REMAIN AFTER CLEANING. REFER TO PROJECT SPECIFICATIONS.

GLASS TYPE

- ◆ INSULATED GLASS UNIT, BALLISTIC LEVEL 2
- ◆ INSULATED GLASS UNIT
- ◆ INSULATED GLASS UNIT WITH RED COLORED INTERIOR FILM
- ◆ INSULATED GLASS UNIT WITH GREEN COLORED INTERIOR FILM
- ◆ INSULATED GLASS UNIT WITH ORANGE COLORED INTERIOR FILM
- ◆ INSULATED GLASS UNIT WITH YELLOW COLORED INTERIOR FILM
- ◆ INSULATED GLASS UNIT WITH BLUE COLORED INTERIOR FILM

Issued for _____

Preliminary - Not For Construction

06-03-2021 75% DESIGN DEVELOPMENT

Drawn Preliminary
Checked Construction
MK Record
Approved Do not scale
JS Use figured dimensions only
Bidpak Number _____
Job Number **2018085**
Title **EAST AND SOUTH EXTERIOR ELEVATION RENOVATION**
Sheet **A400**