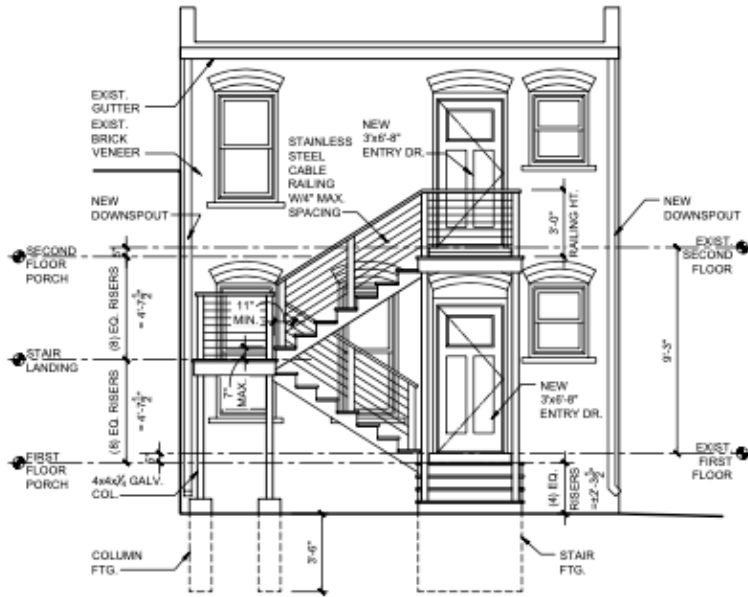
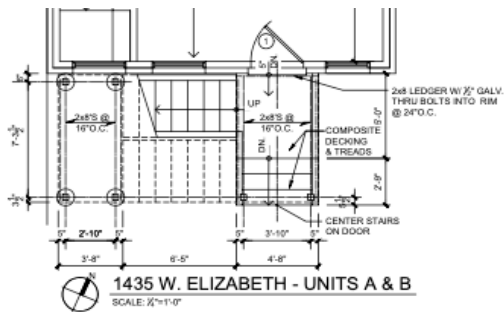
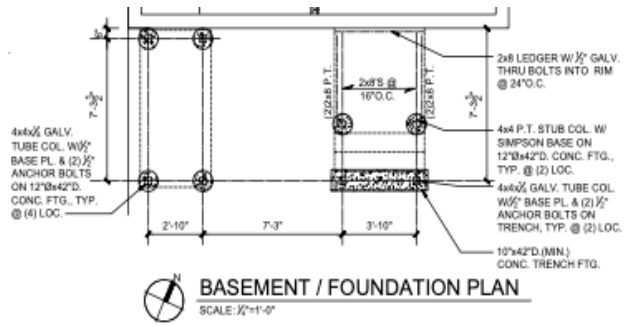
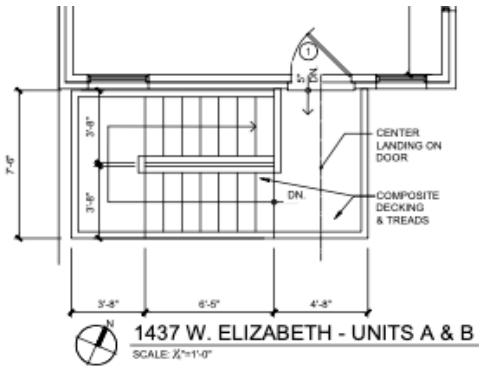


# Exterior Drawings/Scope/Photos



**REAR / STAIR ELEVATION**

SCALE: 1/4"=1'-0"



## Exterior Scope

### New Stairs

- Remove existing 1<sup>st</sup> floor landing/steps
- Remove existing 2<sup>nd</sup> floor balcony
- Install footings for new steel 4x4 posts
  - Use Architectural plans as guide for installation and requirements.
    - Materials-
      - Structural Steel 4x4 Posts - HSS (Hollow Structural Sections)
        - Custom 4" HSS - Painted Bronze
      - Structural Steel hand rail posts - Painted Bronze
      - Stair stringers - Pressure Treated Wood
      - Stair steps - Pressure Treated Wood
      - Railings-
        - Hand Rail - Pressure Treated wood (rounded edge)
        - Remainder of railing system to be made of either Black PVC Coated- Welded Metal Mesh or Stainless Steel Braided Cable System (which is shown in drawings).
      - Seal Wood with clear sealer when dry.

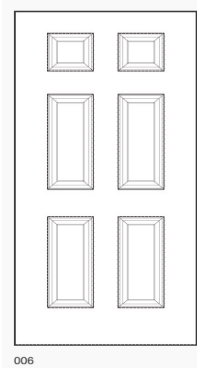
### Exterior Doors/Brick Work

- In order to meet building codes, the rear door entries must be widened. -Code requires 36" minimum opening for entry door.
  - Remove ½ a brick on each side of door to meet requirement. Repair any bricks or areas that are effected by the ½ brick cut-out.
  - Continue existing Arch above rear entry doors to match existing aesthetics of the brick work.
- Door Materials
  - ProVia - Heritage Fiberglass Entry Door
    - Woodgrain Texture
    - 36"
    - Color - PPG1201-7 Lucky Penny
    - Style 006

**Lucky Penny**  
PPG1201-7

### HERITAGE™ FIBERGLASS ENTRY DOOR ADVANTAGES

- A** 1 7/8" Finger-jointed, 2-ply solid oak laminated stiles for both hinge and strike sides are proven to provide increased rigidity and structural integrity.
- B** Polyurethane core reduces energy loss.
- C** Improved definition panel profile creates excellent shadow lines and distinct panel designs.
- D** Lock area is reinforced to provide a solid mounting surface for decorative hardware.
- E** Specially engineered fiberglass door facings will not dent and resist splitting, cracking and warping.
- F** Variable-depth woodgrain texture with hand-applied stain imitates a wood door appearance.
- G** Square-edge design offers an attractive wood door appearance.
- H** A high-performance, composite material is utilized on all Heritage fiberglass bottom rails, giving excellent rot-resistance.



### A/C Units

- Install 4 new a/c condensers on Roof around interior chase.
- Line sets to enter roof at one location to prevent additional holes in roof.
  - Entry must be weather-proofed to prevent any water/debris entry.
- Materials



○

Downspout

- Downspout was already replaced and color was matched to existing gutter (bronze). Original downspout was broken/hanging halfway down the side of the building and swinging in the wind. As this was a safety hazard and also creating a mess with the water, it was removed and replaced with a commercial grade downspout that fit the above gutter.