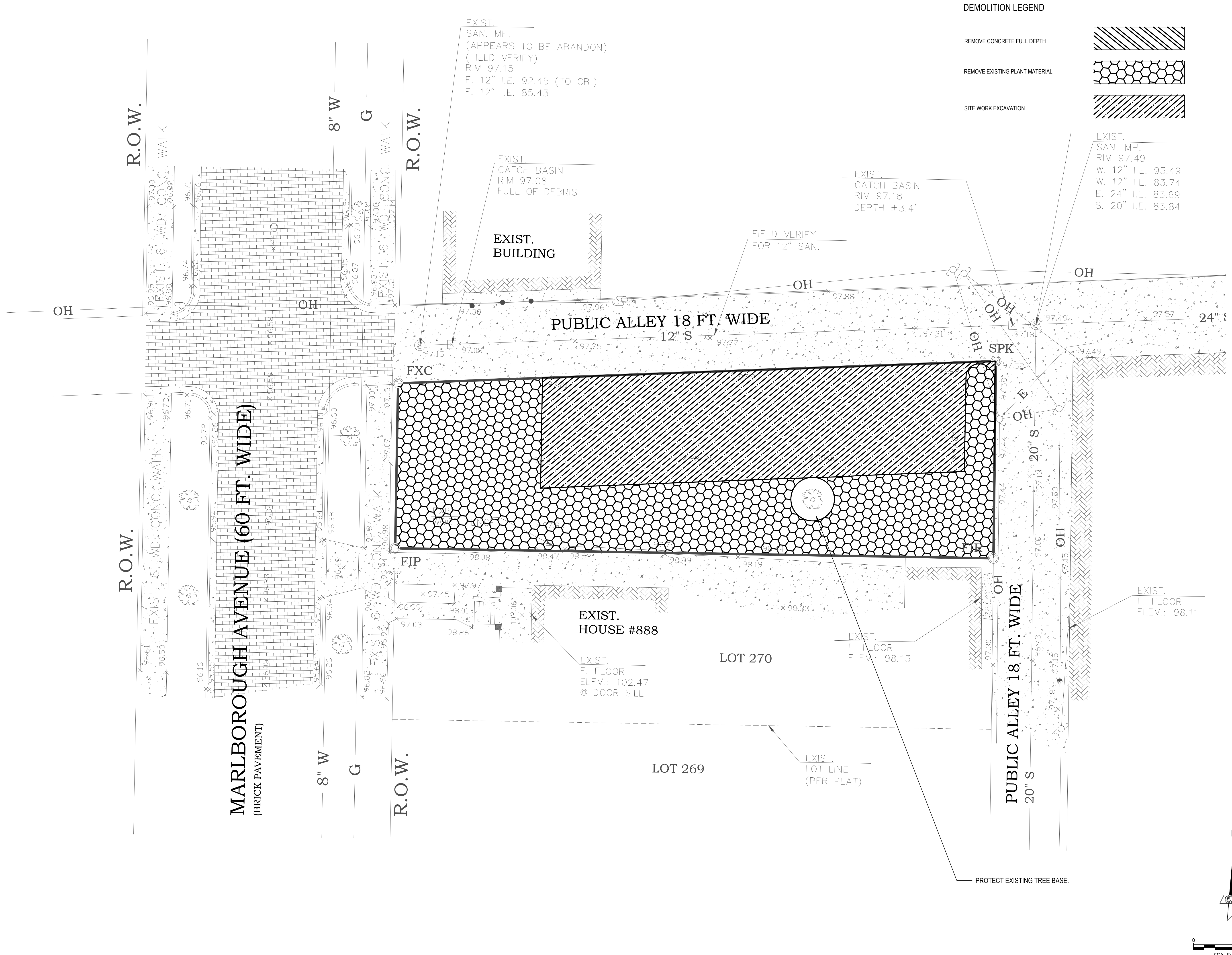


V:\19300-000\_ Jefferson East Parking Lots 2017\Civil Engineering\Plans\4 Construction Documents\CAD\19017-16D Jefferson East Lot 4\C204 Lot 4 Demolition Plan.dwg



**DEMOLITION LEGEND**

REMOVE CONCRETE FULL DEPTH	
REMOVE EXISTING PLANT MATERIAL	
SITE WORK EXCAVATION	

**giffels webster**

Engineers  
Surveyors  
Planners  
Landscape Architects

28 West Adams Road  
Suite 1200  
Detroit, MI 48226  
p (313) 962-4442  
f (313) 962-5068  
www.giffelswebster.com

Executive: STC  
Manager: MGD  
Designer: JPK  
Quality Control: MGD  
Section:

Professional Seal:



DATE	ISSUE
11.14.2017	UPDATE
03.08.2018	UPDATE REVIEW
05.01.2018	CLIENT REVIEW
05.08.2018	HDC SUBMITTAL
08.31.2018	ADDENDUM 2
11.06.2020	ADDENDUM 3

Developed For:  
**Jefferson East Inc.**  
300 River Place Dr. Ste 5250  
Detroit, MI 48215  
P: 313.331.7929  
F: 313.331.0311

**Lot 4  
Demolition Plan**

Jefferson East Parking Lots

City of Detroit  
Wayne County  
MICHIGAN

Date: 10.02.2017  
Scale: 1"=20'  
Sheet: C204  
Project: 19017-16D

