



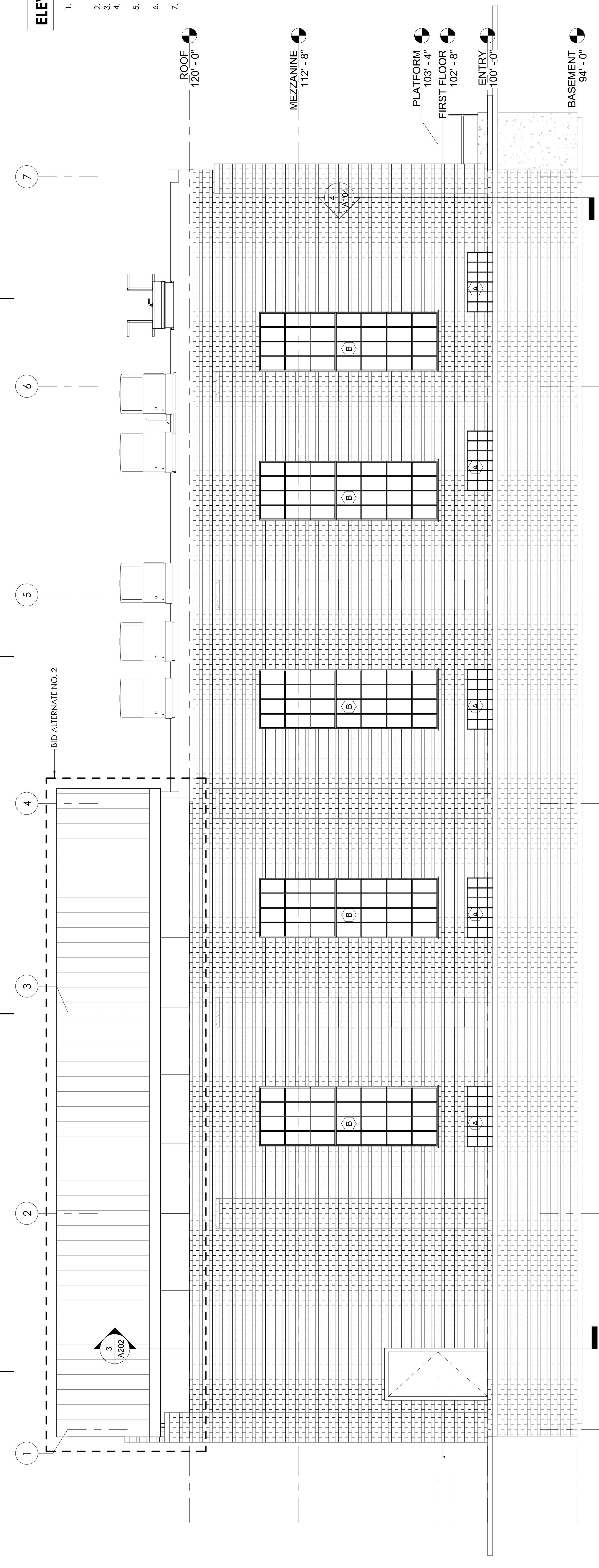
No.	Description	Date
	Revision Schedule <td> </td>	

AMERICAN COMMUNITY DEVELOPERS, INC.
 20250 HARPER AVE.
 HARPER WOODS, MI 48225

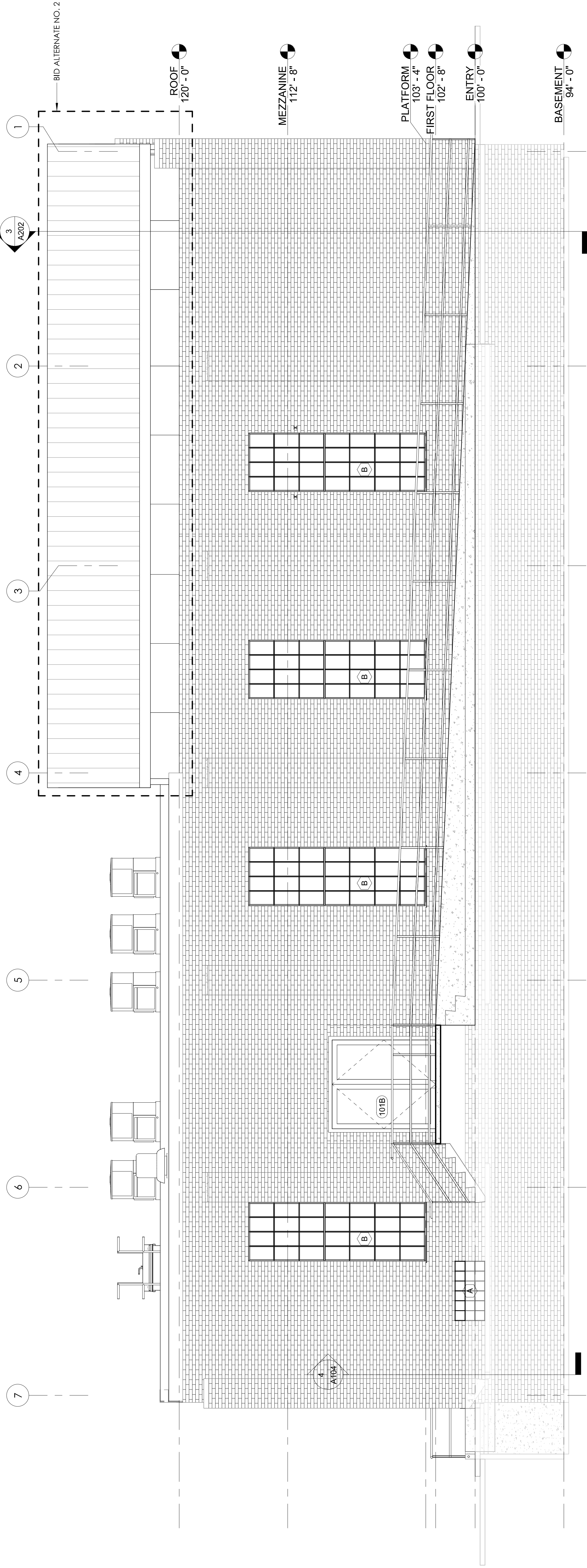


ELEVATION NOTES

1. CLEAN ALL BRICK AND STONE TO REMOVE GRAFFITI AND ORGANIC MATERIAL. DO NOT USE HARSH CHEMICALS OR POWER WASHING EQUIPMENT.
2. TUCK POINT MASONRY JOINTS.
3. REPAIR CRACKS AND DISINTEGRATION TO BE LIGHT ROOM FINISH.
4. REPLACE CUTTERS AND DOWNSPOUTS. ROUTE NEW DOWNSPOUTS BELOW GRADE TO NEAREST CATCH BASIN.
5. REMOVE BRICK WINDOW PICTURE FRAMES FROM LOWER HALF OF TYPE-B WINDOW.
6. METAL ROOFING, CUTTERS, DOWNSPOUTS, SHEET FLASHING TO BE REPAIRED TO ORIGINAL CONDITION.
7. EXTERIOR RAILING SYSTEM TO BE 1/2" FABRICATED STEEL PIPE RAIL TO PANELIZED AND POWDER COATED BLACK. SPACE POSTS AT 6'-0" O.C. MAX AND HORIZONTAL RAILINGS AT 16" O.C. VERTICALLY DOWN FROM 36" HAND RAIL. CONNECT PANELS VIA SLEEVES AND BLIND FASTENERS. DO NOT WELD. SLEEVE CONCRETE AND SET POSTS IN NON-SHINK GROUT.



1 EAST ELEVATION
 A101
 1/4" = 1'-0"



2 WEST ELEVATION
 A101
 1/4" = 1'-0"