

Wrap Wood Fascia and Soffits with Dark Brown Aluminum - Facade



Above: "Before". Areas of soffit and fascia at front entry. ★
Notice profile of front porch gable trim at left.
Wood components were not deteriorated beyond repair.

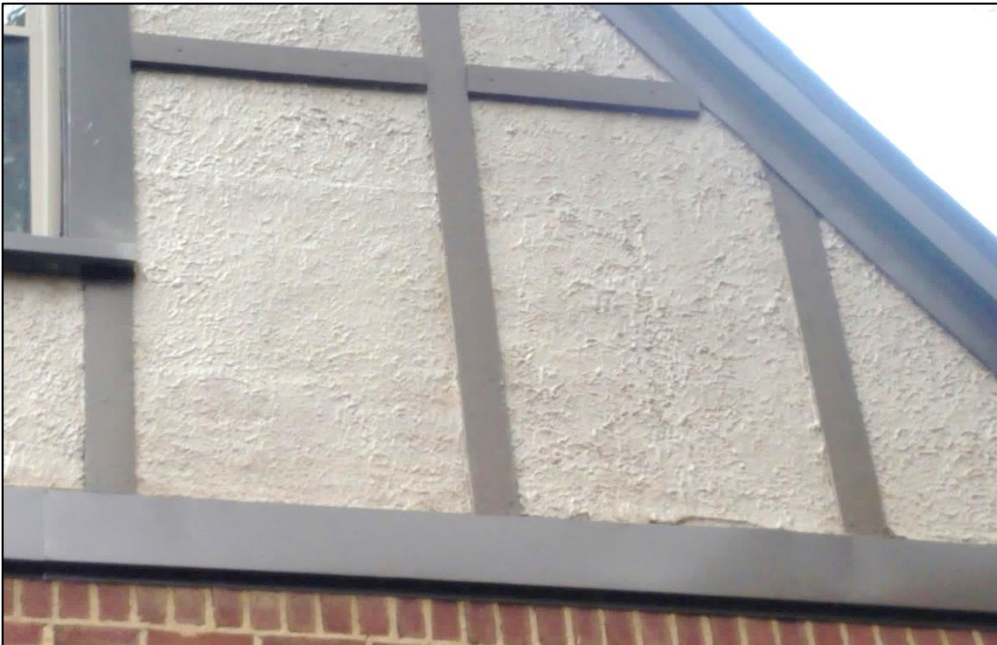
Below: "After".
Highly profiled fascia is gone; sheen of aluminum material is highly visible.
New soffit has a repeating horizontal pattern, which was not part of the original wood soffit.



Wrap Wood Fascia and Soffits, with Dark Brown Aluminum – Gable wall

Similar “before” and “after” comment from the front elevation.

Note also the small, yet important detail of the rakeboard that has been lost.



Rear Railings

Raised patio, rear entry and second floor rear porch railings were replaced. Applicant photos.



36 in. x 69.43 in. Black Powder Coated Aluminum Preassembled Deck Railing

Arja Railing ★★★★★ 40 reviews

[Product Details](#) [Specifications](#) [Questions & Answers](#) [Customer Reviews](#)

Product Details

About This Product

Arja Railing offers an array of convenient and stylish products to meet your deck railing needs. Arja Railing's preassembled deck panel is a stylish and durable solution to enhance the appearance and safety of any outdoor space. The deck panel kit includes the railing panel, top and bottom rail snags, support leg, and mounting hardware to be connected to an Arja Railing post kit. Whether homeowner or contractor, the straightforward, preassembled system enables you to finish your project faster, and cheaper. For added convenience, free project estimates are offered on www.arjarailing.com, helping customers plan and budget effectively. Using durable, powder coated aluminum, Arja Railing is guaranteed to inspire, and backed up by a 20-year limited warranty to ensure that your railing will last for years to come. Arja Railing is also engineered, tested and approved by the ICC to meet residential and commercial building codes under ESR-4224.

Additional Resources

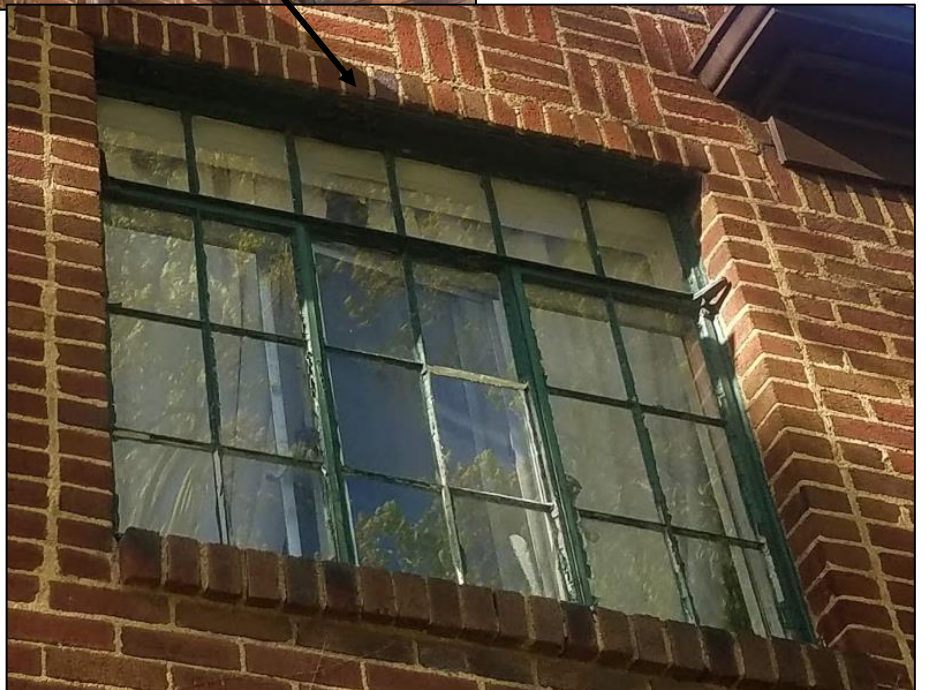
- Shop All Arja Railing
- From the Manufacturer
- Installation Guide
- Return Policy

Removal of Front French door railings.

"Before" photo, Google street view, August 2015. Remaining photos were provided by the applicant.



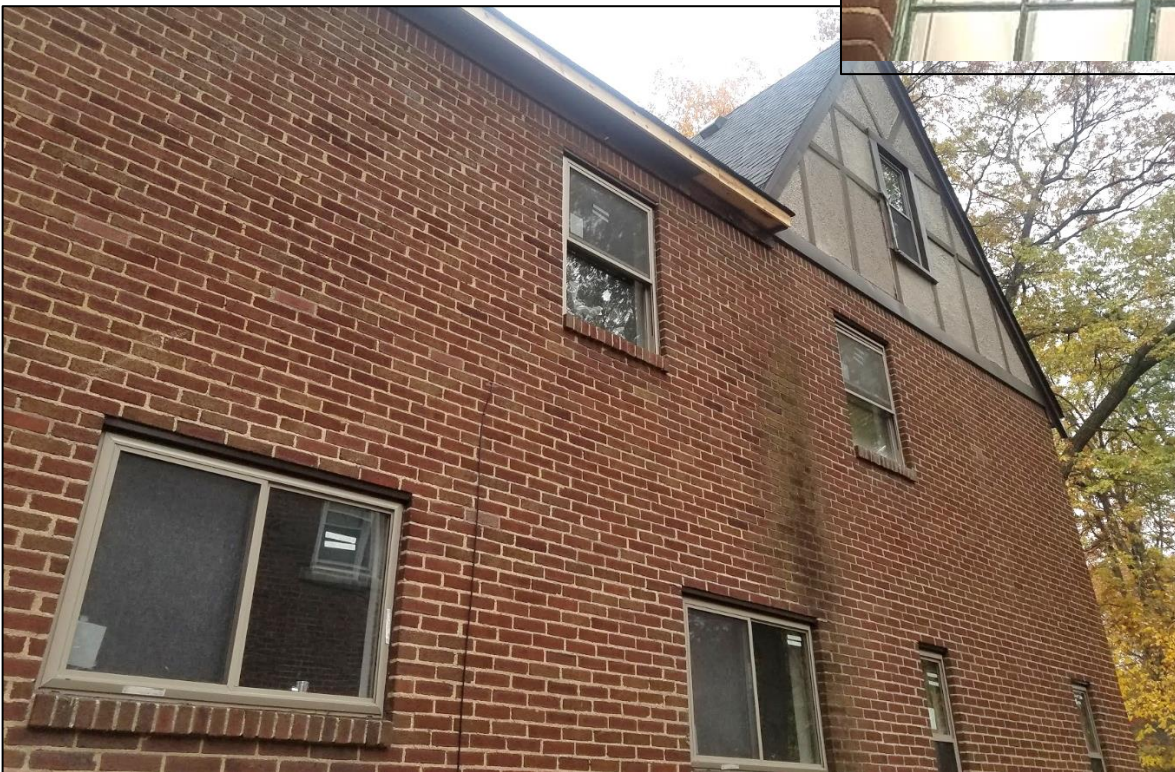
Replacement of steel windows with vinyl windows - Facade



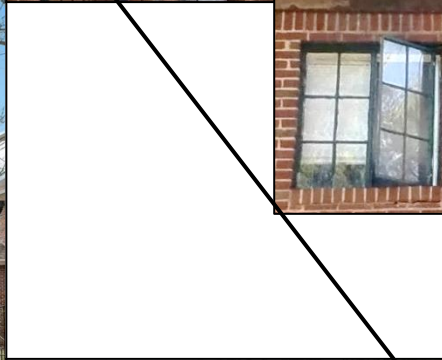
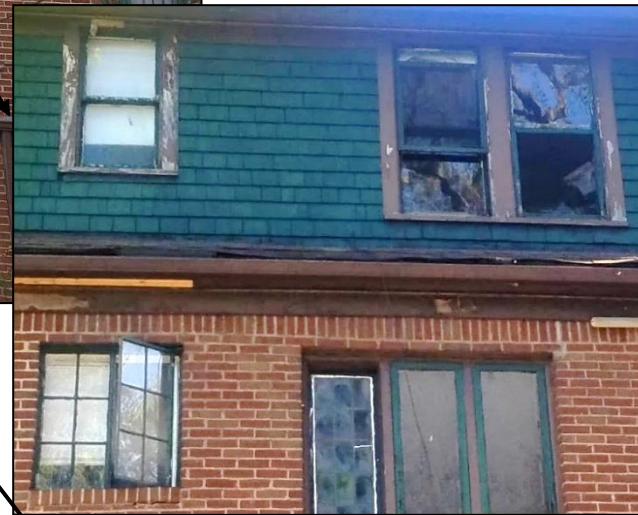
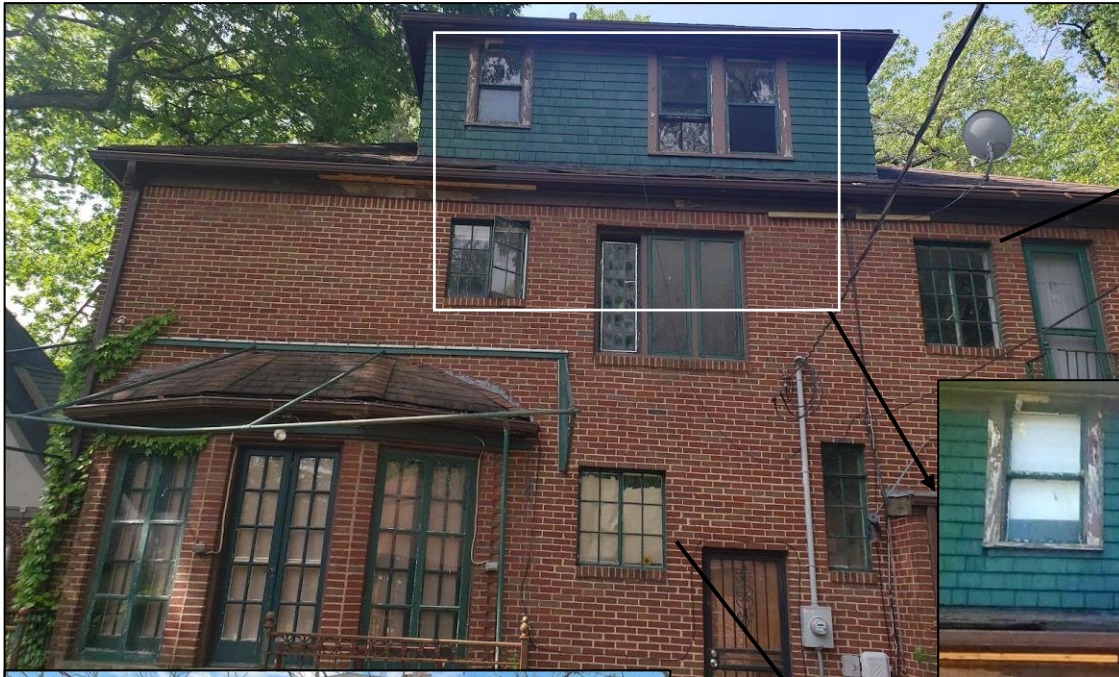
East side wall – Window replacement



West side wall – Window Replacement



Rear Wall – Window Replacement



New exterior doors - Rear

Applicant claims the white doors were in place at time of house purchase. Staff didn't find any previous HDC review for the white steel doors.



East side wall

