

# SKYBRIDGE CONNECTOR

HUNTINGTON PLACE / DETROIT

**PRELIMINARY DESIGN REVIEW**

APRIL 2025

AECOM  
INFORM STUDIO  
BURO HAPPOLD  
GIFFELS WEBSTER

# SKYBRIDGE CONNECTOR VISION

**Detroit built itself as a cradle of American modernist design** and as a global center for prolific designers. The city's convention center, Huntington Place is fast becoming the event industry's choice for **showcasing** events centered around **innovative design** in automotive, electric vehicle design, **manufacturing, automation**, and robotics.

Situated on the majestic Detroit River and an international border with Ontario, Canada, **the surrounding architecture of the city sets the tone for past success and future vision** with post-modern neogothic spires and **art deco skyscrapers**.

*Captured from [huntingtonplacedetroit.com](http://huntingtonplacedetroit.com)*

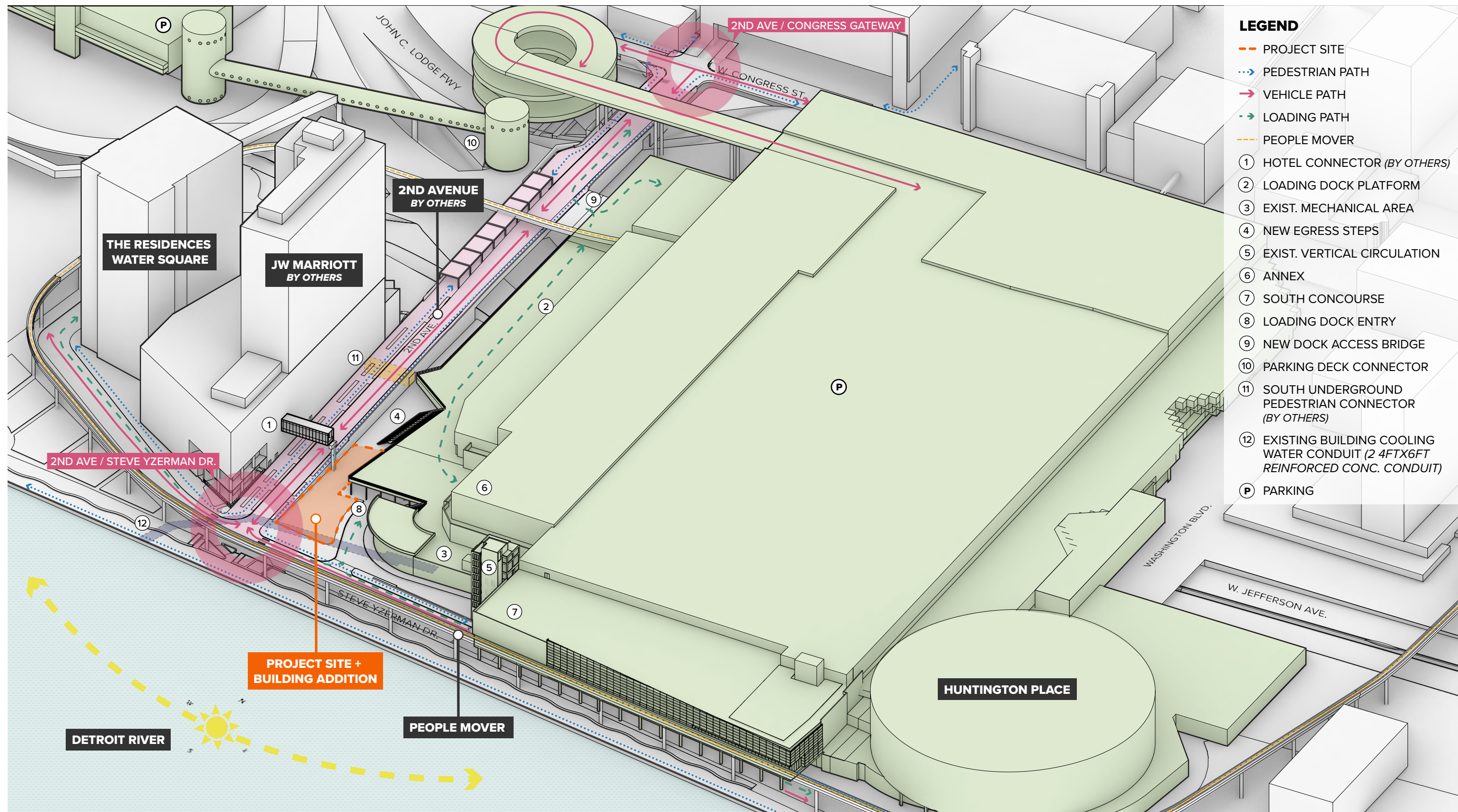


# SKYBRIDGE CONNECTOR NARRATIVE

The **Skybridge Connector** at **Huntington Place** will link the new **JW Marriott Hotel, 2nd Avenue Extension**, and the **Riverwalk** to the convention center, transforming its presence along the Detroit River. More than just a connection, the project aims to become a significant civic destination and urban landmark, introducing valuable public space and reinforcing the center's role in cultural exchange, innovation, and sustainability.

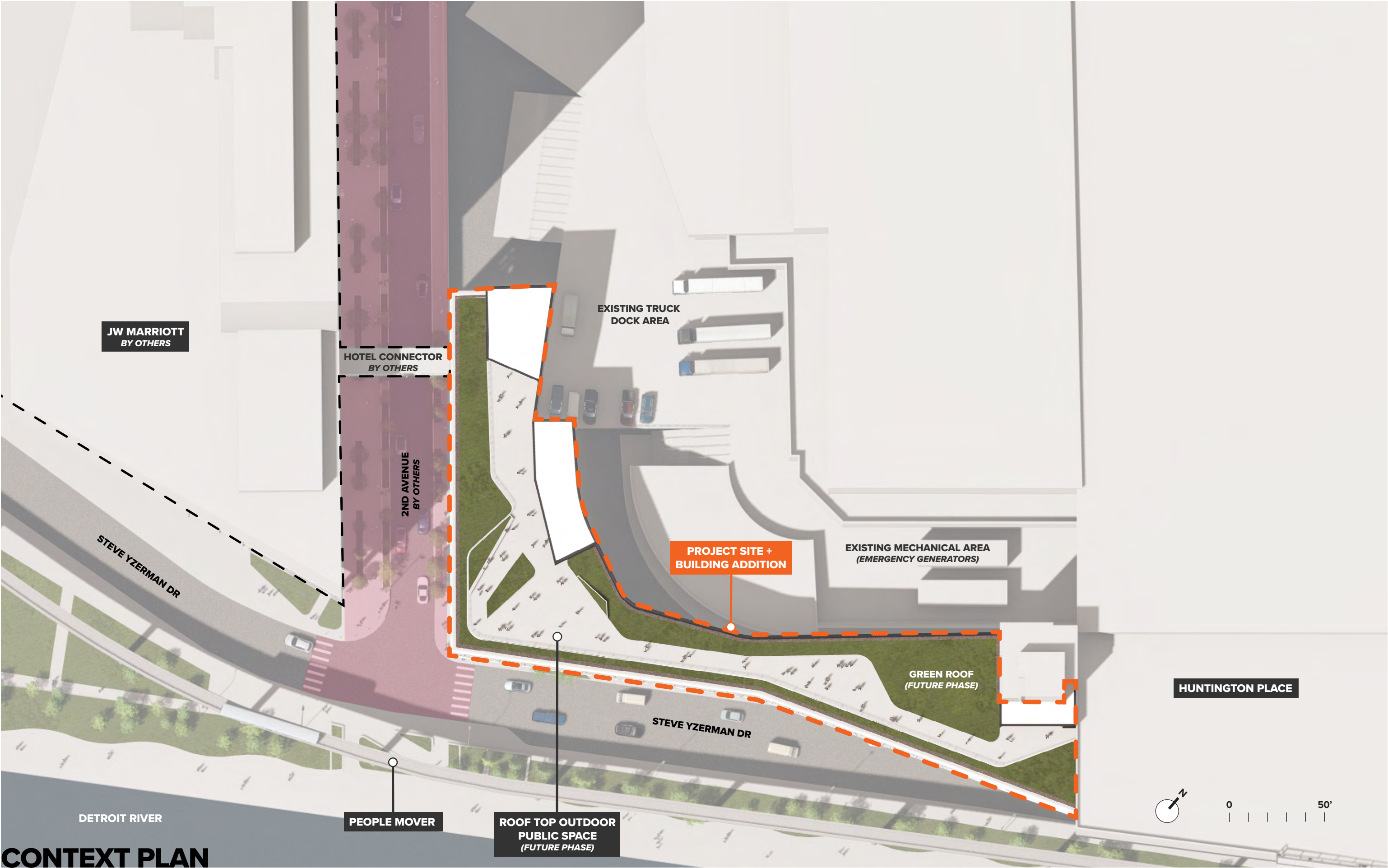
Positioned at the northeast corner of **Steve Yzerman Dr.** and **Second Ave.**, the new building will create a seamless link between the convention center, the riverfront, and the expanding hospitality sector. **Flexible public spaces, event-driven programming, and immersive urban design** will energize the site and improve accessibility to Huntington Place. The **Skybridge Connector** will include indoor and outdoor gathering areas, informal lounges, and pop-up amenities, while its direct connection to the JW Marriott will facilitate business, hospitality, and conference events.

Innovative materials, facade transparency, and dynamic lighting will highlight Huntington Place's energy and ambition, while integrated principles of sustainability and wellness will provide long-term environmental and experiential benefits. The **Skybridge Connector** will deepen the relationship between the convention center and the city, enhancing accessibility and placemaking within the urban landscape and strengthening Detroit's evolving riverfront.



## EXISTING CONTEXT + PROPOSED SKYBRIDGE CONNECTOR





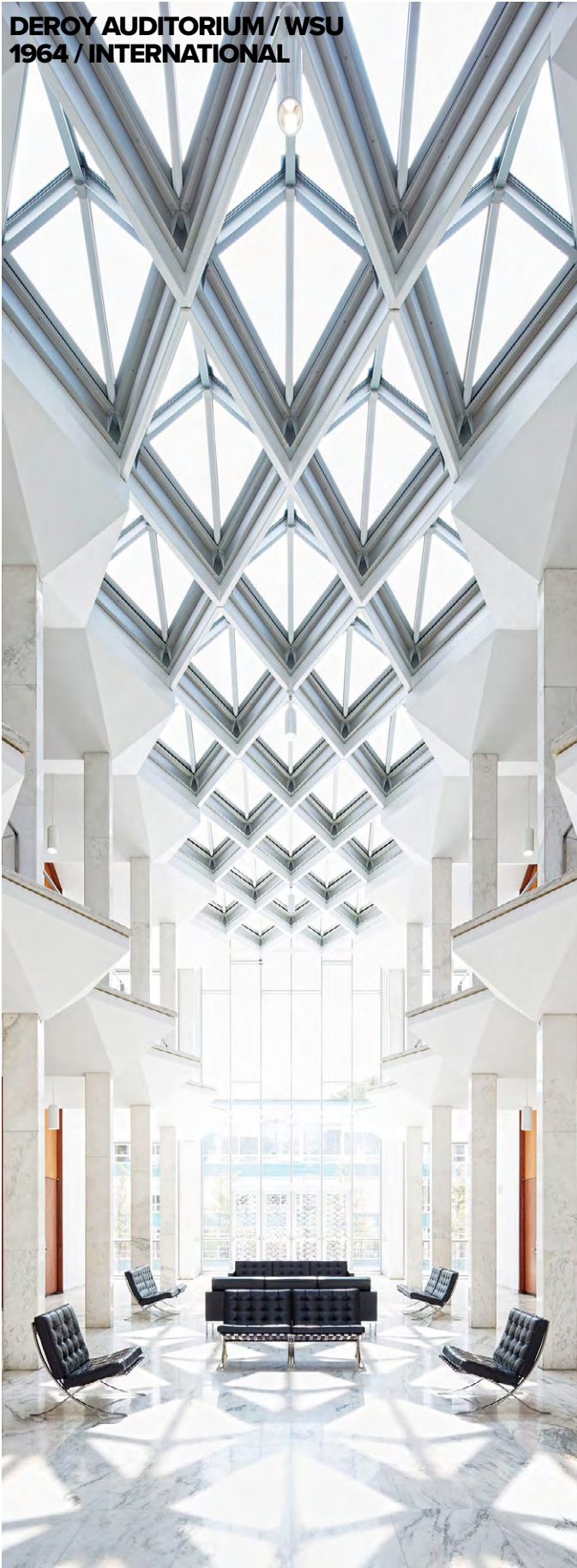
**CONTEXT PLAN**

**HUNTINGTON PLACE  
SKYBRIDGE CONNECTOR**

**FACADE STUDY - MATERIALITY + CONTEXT**



**DEROY AUDITORIUM / WSU**  
**1964 / INTERNATIONAL**



**PENOBSCOT BUILDING**  
**1928 / ART DECO**



**DETROIT FREE PRESS BUILDING**  
**1925 / ART DECO**



**LAFAYETTE TOWERS**  
**1963 / INTERNATIONAL**



**GUARDIAN BUILDING**  
**1929 / ART DECO**



**DAVID STOT BUILDING**  
**1929 / ART DECO**



**ONE WOODWARD AVE**  
**1962 / INTERNATIONAL**

**SKYBRIDGE CONNECTOR / DETROIT MODERN**





**AERIAL VIEW S-W**





**RIVERFRONT VIEW**





**RIVERFRONT VIEW**





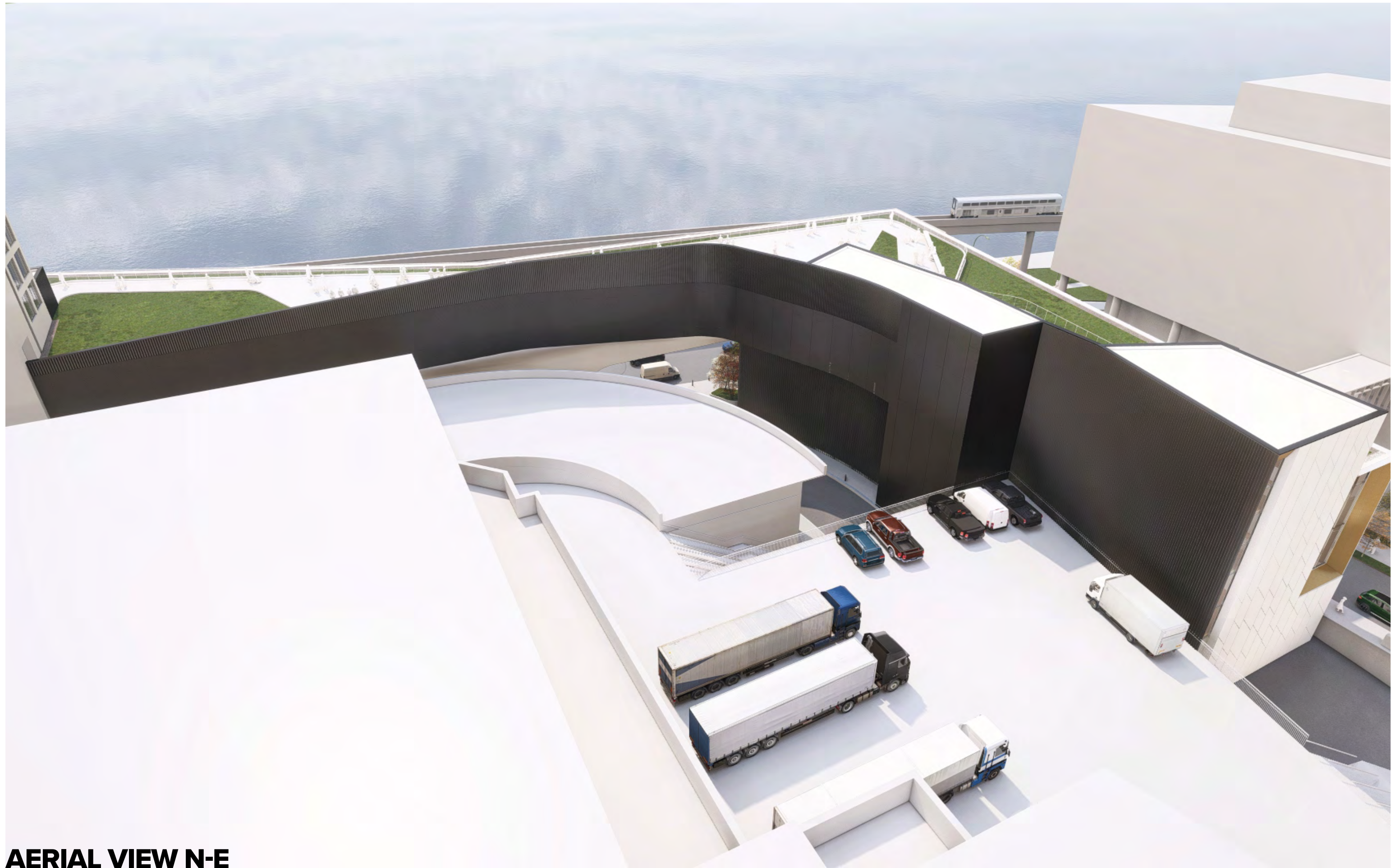
**STEVE YZERMAN DRIVE VIEW**





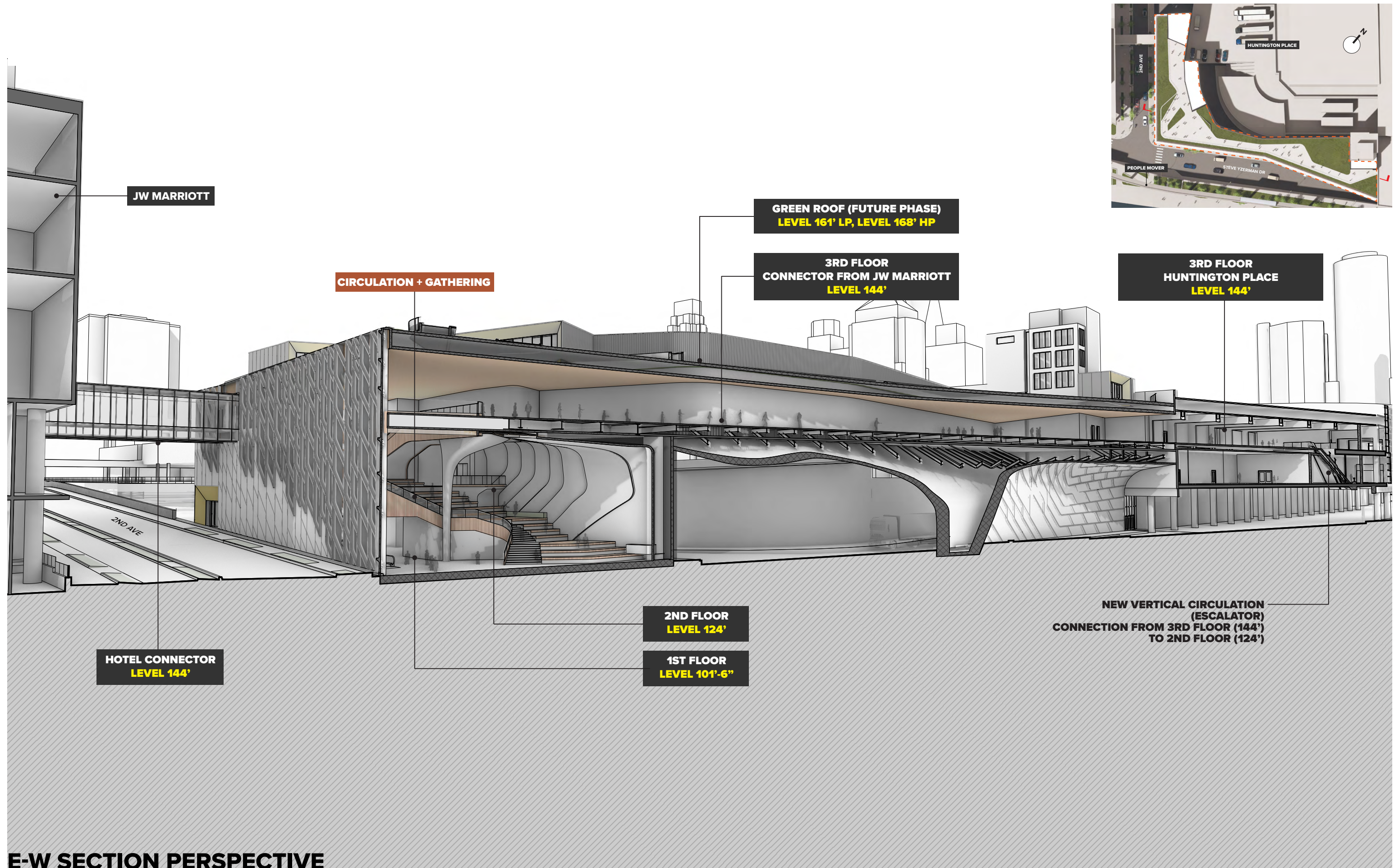
**2ND AVENUE VIEW**



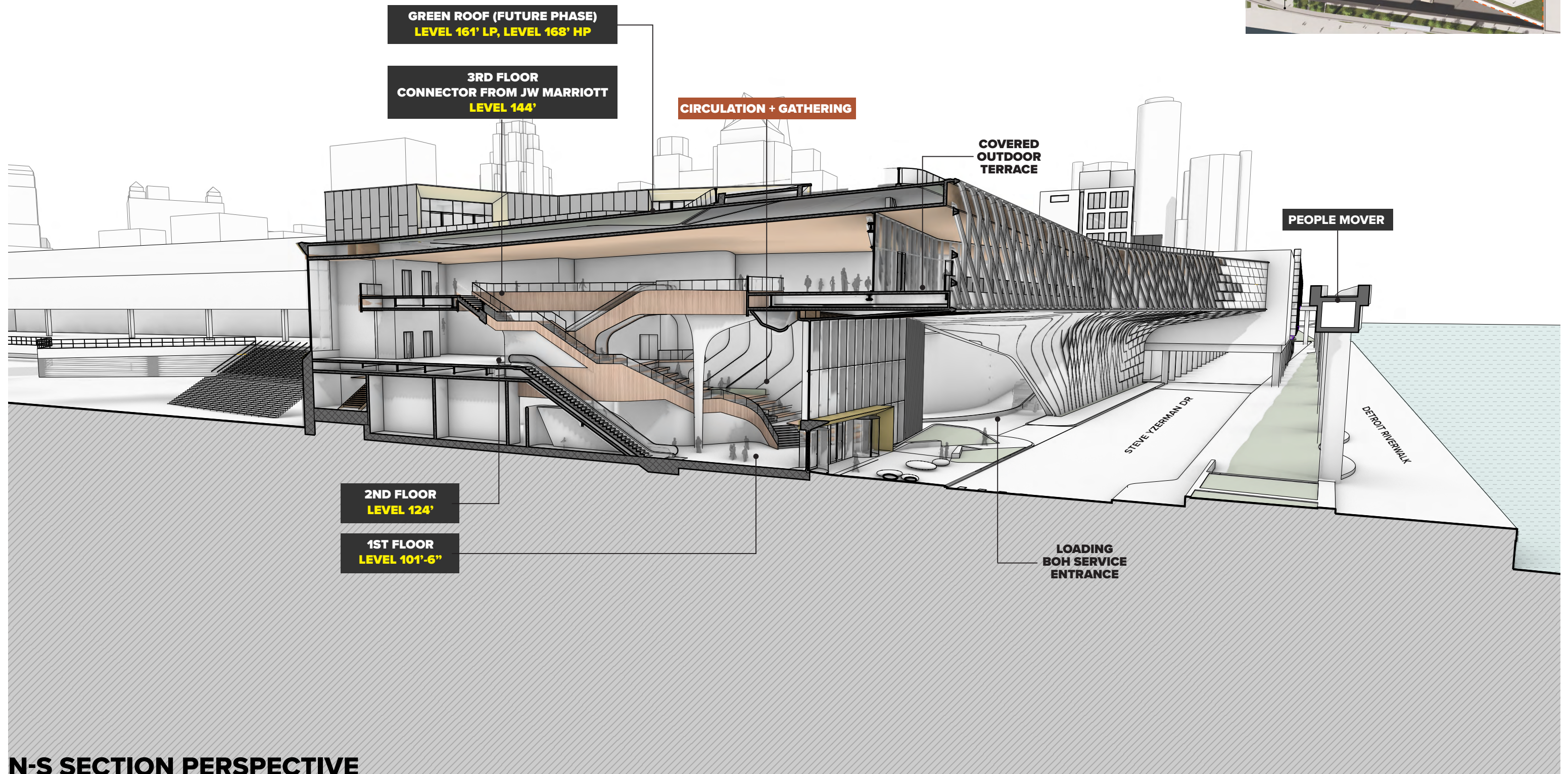
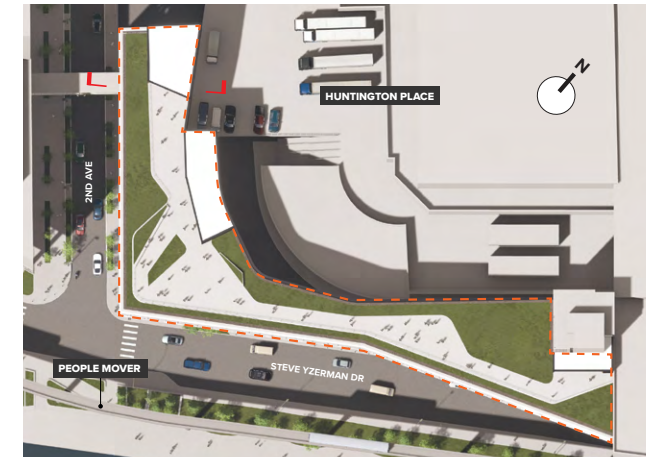


**AERIAL VIEW N-E**





**E-W SECTION PERSPECTIVE**

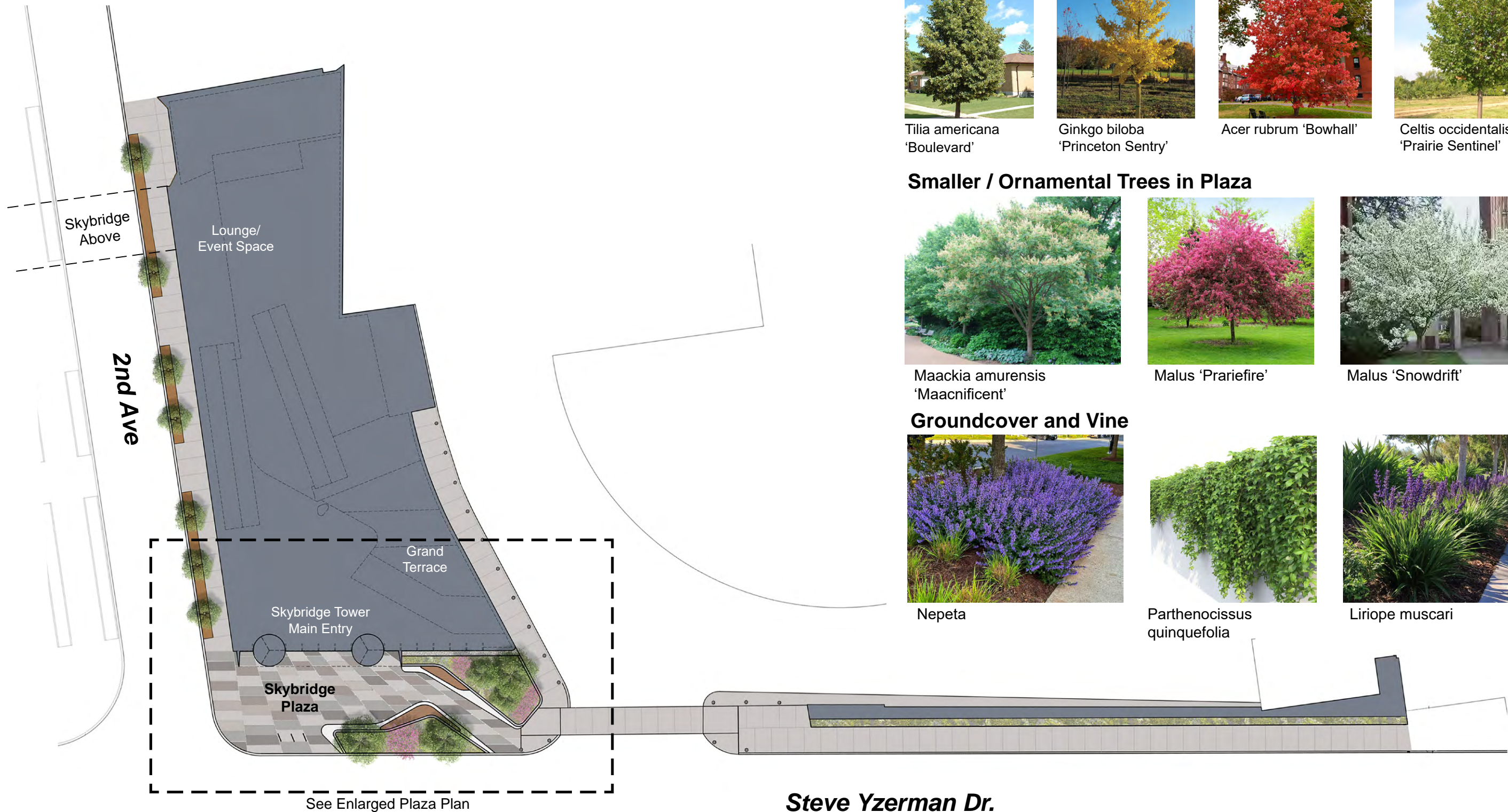


N-S SECTION PERSPECTIVE



**HUNTINGTON PLACE  
SKYBRIDGE CONNECTOR**

**LANDSCAPE/URBAN PLAN - PLANTINGS / SITE FURNISHINGS**



### Street Trees



*Tilia americana*  
'Boulevard'



*Ginkgo biloba*  
'Princeton Sentry'



*Acer rubrum* 'Bowhall'



*Celtis occidentalis*  
'Prairie Sentinel'

### Smaller / Ornamental Trees in Plaza



*Maackia amurensis*  
'Maacnificent'



*Malus* 'Prariefire'



*Malus* 'Snowdrift'

### Groundcover and Vine



*Nepeta*



*Parthenocissus*  
*quinquefolia*



*Liriope muscari*

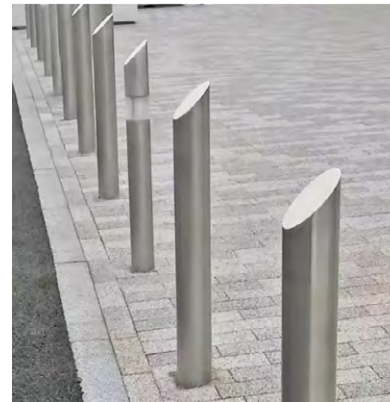
## LANDSCAPE CONCEPT PLAN - PLANTING





8 x 24 x 4 or 6"  
(20 x 60 x 10 or 15cm)

Custom Granite Blend Concrete Unit Paver



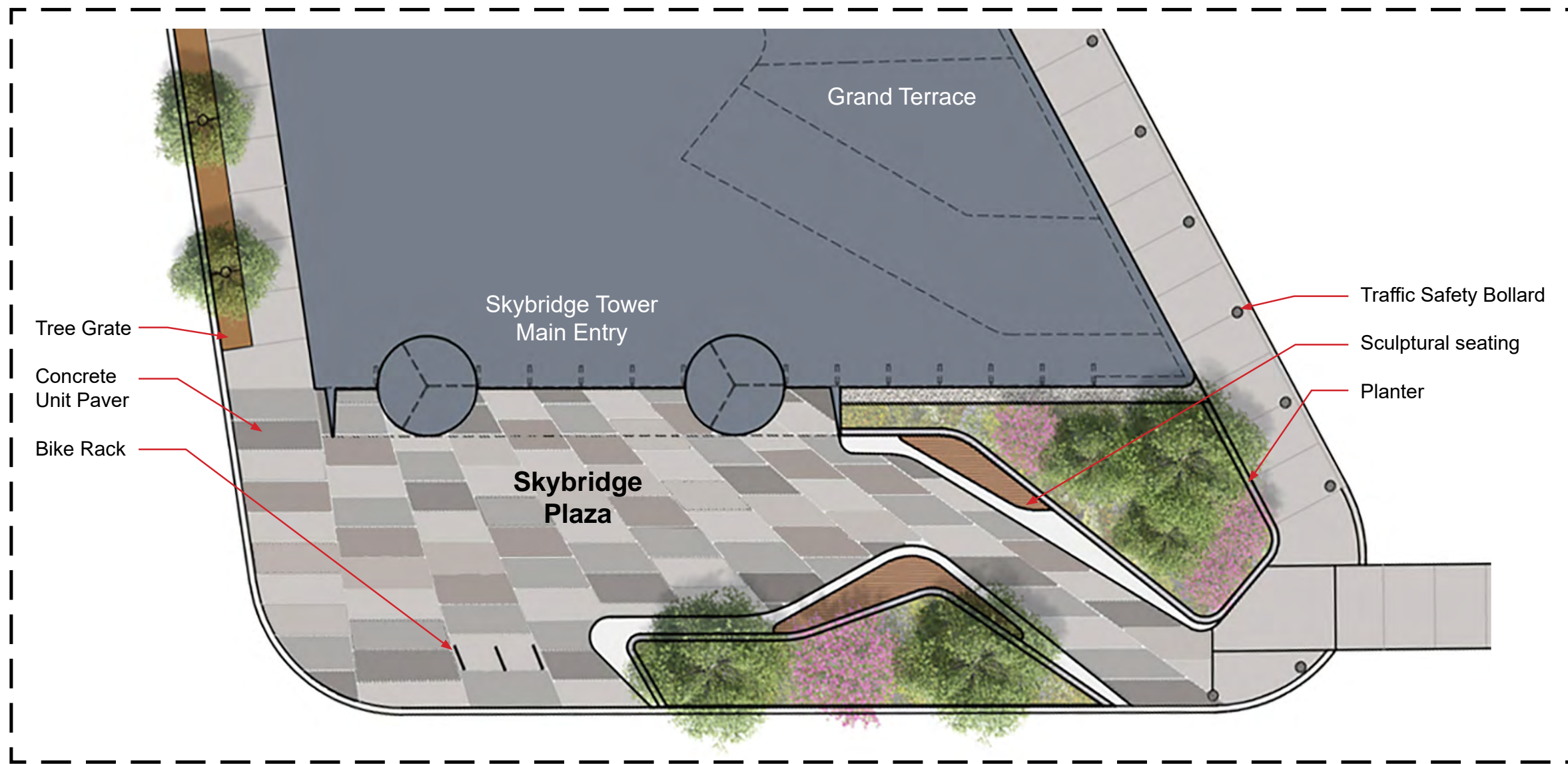
Traffic Safety Bollard



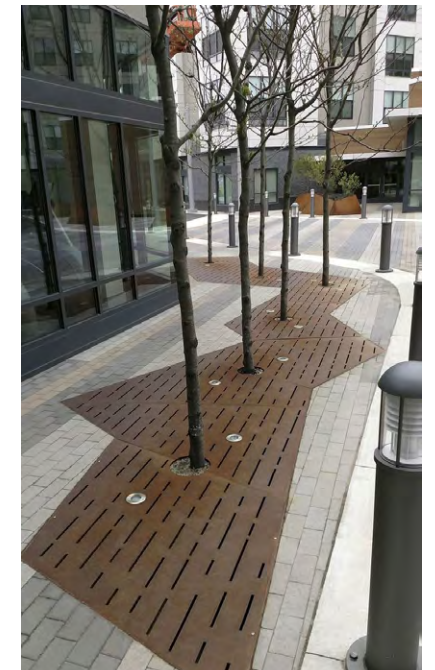
Bike Rack



Sculptural Seating



Enlarged Plaza Plan



Tree Grate



Trash Receptacle

## LANDSCAPE CONCEPT PLAN - PAVING AND SITE FURNISHINGS

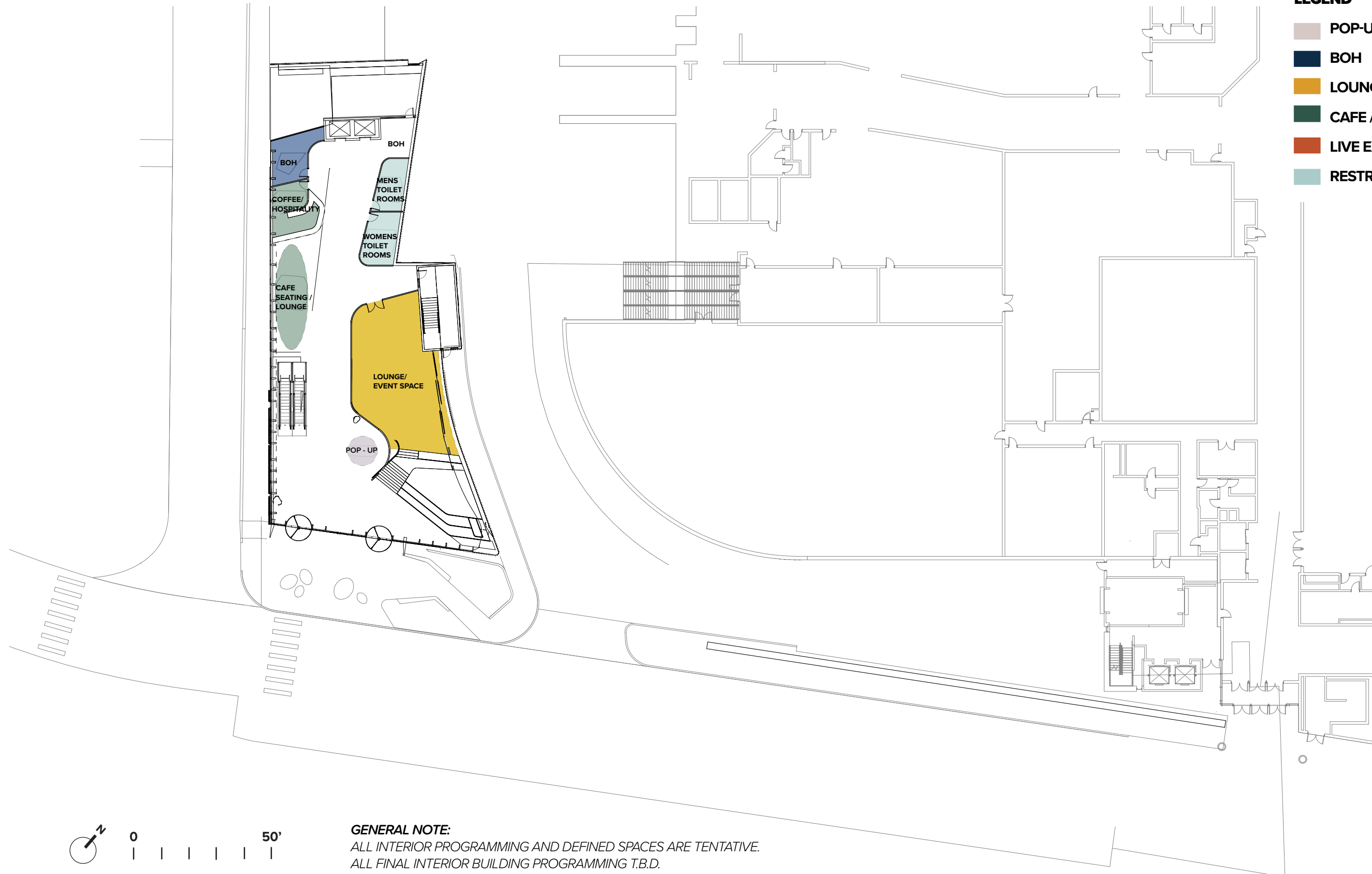


# **HUNTINGTON PLACE SKYBRIDGE CONNECTOR**

## **FLOOR PLANS**

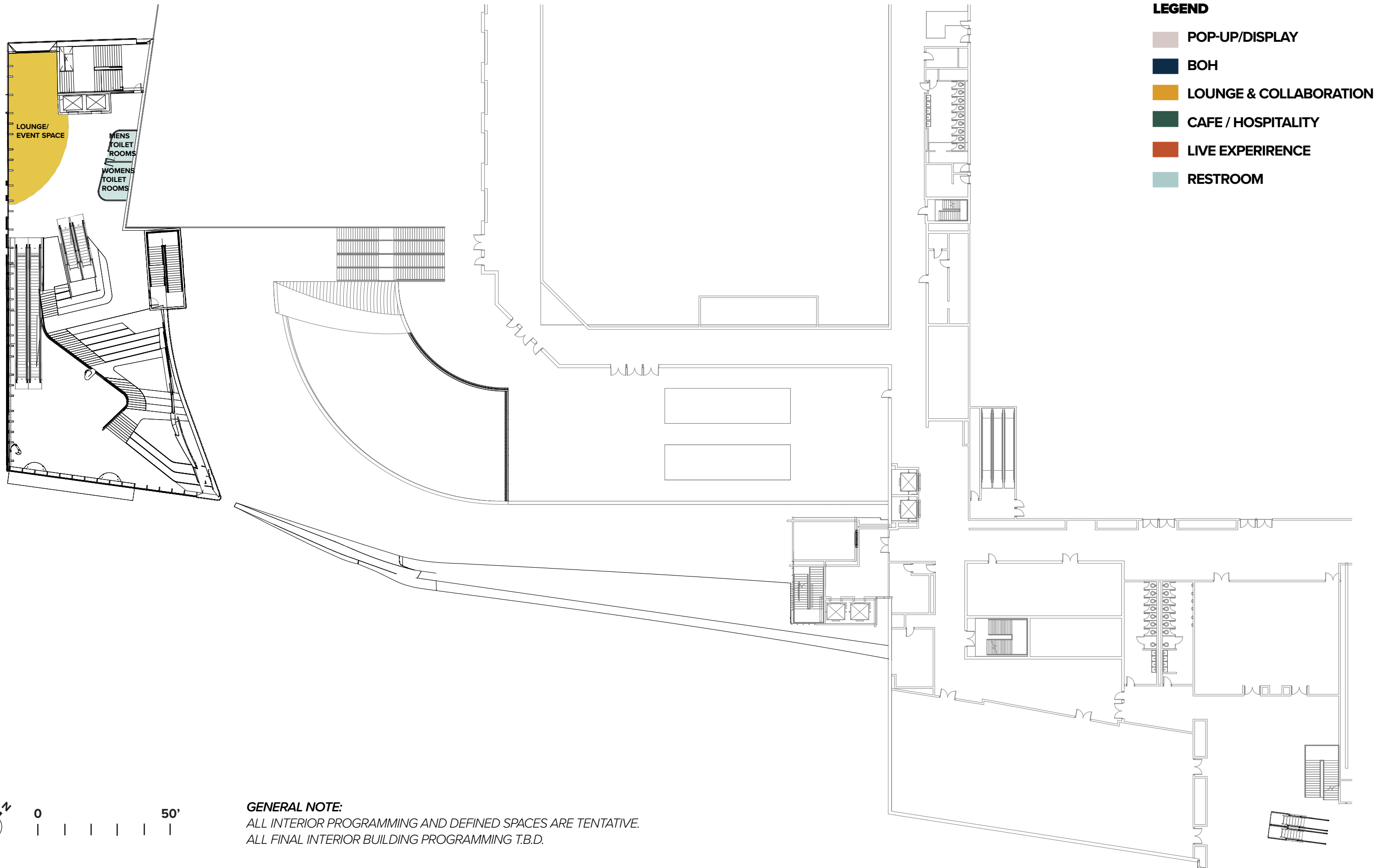
**LEGEND**

- POP-UP/DISPLAY
- BOH
- LOUNGE & COLLABORATION
- CAFE / HOSPITALITY
- LIVE EXPERIENCE
- RESTROOM



**GENERAL NOTE:**  
ALL INTERIOR PROGRAMMING AND DEFINED SPACES ARE TENTATIVE.  
ALL FINAL INTERIOR BUILDING PROGRAMMING T.B.D.

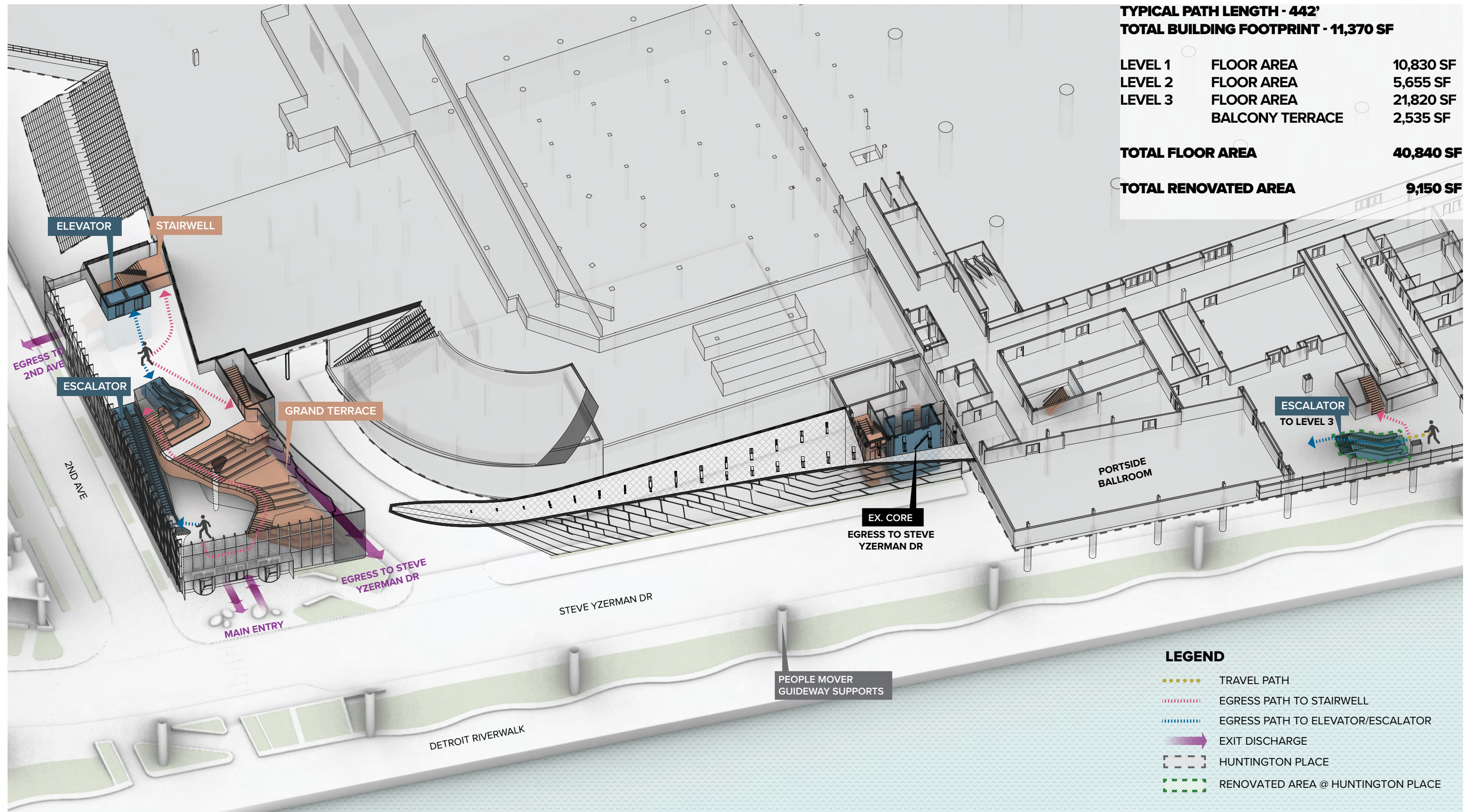
**FLOOR PLAN/ LEVEL 1 (101'-6")**



**FLOOR PLAN/ LEVEL 2 (124')**

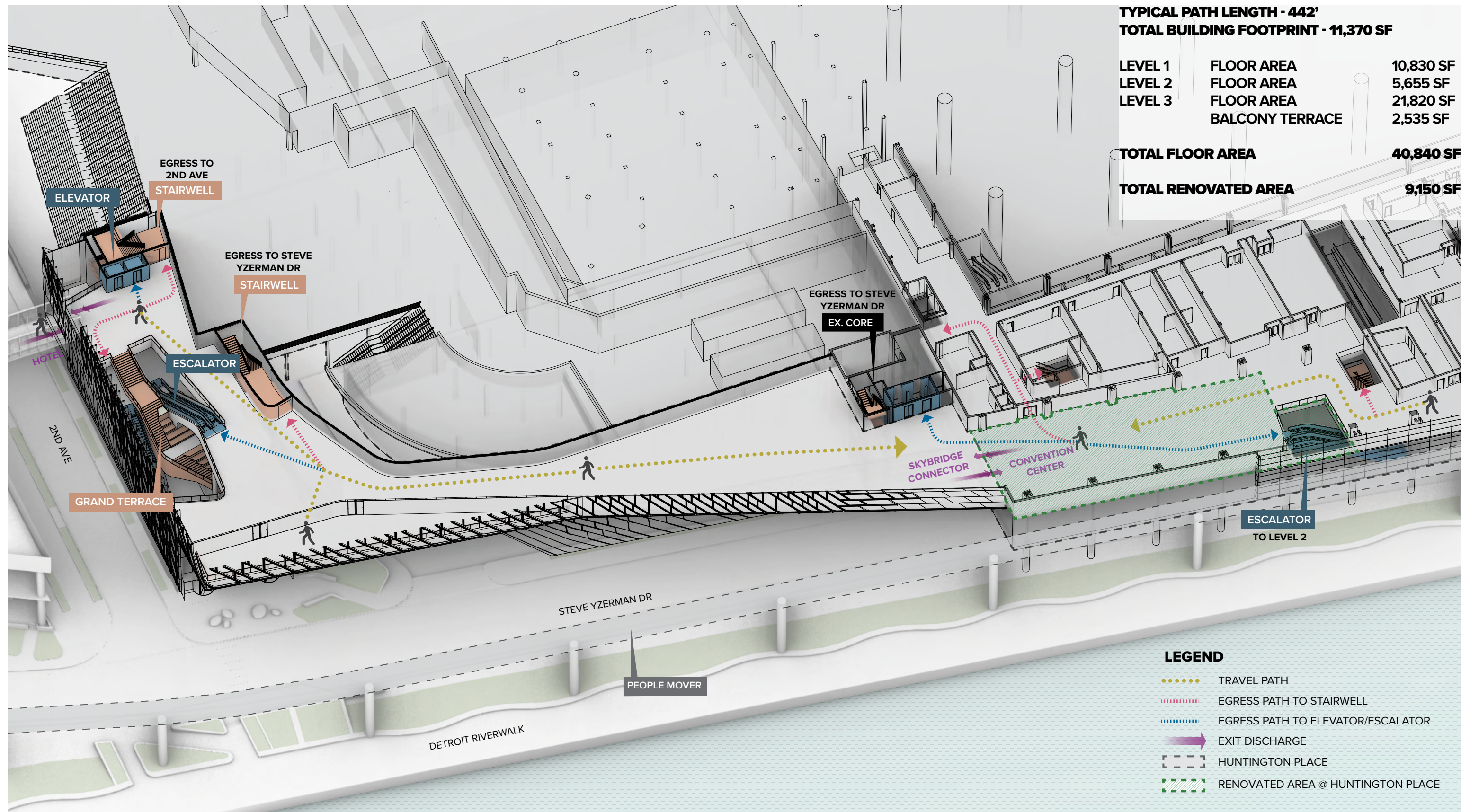






**CIRCULATION DIAGRAM / LEVEL 1 (101'-6") + LEVEL 2 (124')**





**CIRCULATION DIAGRAM / LEVEL 3 (144')**

**HUNTINGTON PLACE  
SKYBRIDGE CONNECTOR**

**EXTERIOR MATERIALITY PALETTE**





**EW-T-01. LOBBY GLAZING SYSTEM**  
**(MAIN ENTRY)**

Steel AESS Framing (Basis-of-Design)  
Insulating Glass Unit Vitro Architectural Glass (Basis-of-Design)  
Exterior Lite: Solarban 72 (2) Starphire (Low-Iron Glass)  
Air Space: 90% Argon + 10% Air  
Inner Lite: Starphire (Low-Iron Glass)

TOTAL AREA = SQFT



**EW-T-02. ALUMINUM-FRAMED GLAZING SYSTEM**  
**(LEVEL 2 SOUTH INTERIOR TERRACE)**

Kawneer 1600 Wall System 2 Curtain Wall (Basis-of-Design)  
Insulating Glass Unit Vitro Architectural Glass (Basis-of-Design)  
Exterior Lite: Solarban 72 (2) Starphire (Low-Iron Glass)  
Air Space: 90% Argon + 10% Air  
Inner Lite: Starphire (Low-Iron Glass)

TOTAL AREA = SQFT



**EW-T-03. DIAGONAL GLAZING WALL**  
**(WEST FAÇADE)**

Unitized Curtain Wall w/ extruded ornamental fin (match EW-T-03A)  
Fin Material: Terracotta (Basis-of-Design)  
System Support: Glazing Façade w/ Vertical Steel Strong Back  
Insulating Glass Unit Vitro Architectural Glass (Basis-of-Design)  
Exterior Lite: Solarban 72 (2) Starphire (Low-Iron Glass)  
Air Space: 90% Argon + 10% Air  
Inner Lite: Starphire (Low-Iron Glass)

TOTAL AREA = SQFT



**EW-T-03A. DIAGONAL SCREEN WALL**  
**(TERRACE)**

Terracotta clad HSS Framing (Basis-of-Design)  
Extruded Profile clipped to HSS  
Material: Terracotta  
Glaze: Custom White (as selected by Architect / Owner)  
Textured: Smooth  
Sheen: Custom Glazed Satin (selected by Architect/ Owner)

TOTAL AREA = SQFT



**CTP-01. CERAMIC TILE PANEL**

Custom Fabricated (3D-Printed) Ceramic Wall Panel  
Open Joint Rainscreen system as fabricated by Bespoke Ceramics (Basis-of-Design)  
Material: Terracotta  
Glaze: Custom White (selected by Architect / Owner)  
Textured: Smooth  
Sheen: Glazed Satin (selected by Architect / Owner)

TOTAL AREA = SQFT



**CTP-02. CERAMIC TILE PANEL**

Fabricated Ceramic Flat Wall Panel  
Open Joint Rainscreen System  
Custom Vertical TerraClad Panels as manufactured by Boston Valley Terra Cotta (Basis-of-Design)  
Material: Terracotta  
Glaze: Custom White (selected by Architect / Owner)  
Textured: Smooth  
Sheen: Glazed Satin (selected by Architect / Owner)

TOTAL AREA = SQFT



**CTP-03. CERAMIC TILE PANEL**

Fabricated Ceramic Curtainwall In-Fill Panel  
Material: Terracotta  
Glaze: Custom White (selected by Architect / Owner)  
Textured: Smooth  
Sheen: Glazed Satin (selected by Architect / Owner)  
Custom Vertical TerraClad Panels as manufactured by Boston Valley Terra Cotta (Basis-of-Design)

TOTAL AREA = SQFT



**EIFS-01. EXTERIOR INSULATION AND FINISH SYSTEM**  
**(FAÇADE SERVICE GRADE LEVEL + SOFFIT)**

StoTherm ci EPS Wall System (Basis-of-Design)  
Continuous Insulation: EPS (3.6 / inch)  
Thickness: 3" (Minimum)  
Attachment: Adhesive  
Mesh: Sto Armor Mat XX Mesh  
Basecoat: Sto BTS Xtra (or as recommended by mfr.)  
Primer: StoPrime UV  
Finish: Sto Architectural Coating  
StoColor Lotusan (Fine Textured)  
Color: Match Terracotta (White)

TOTAL AREA = SQFT

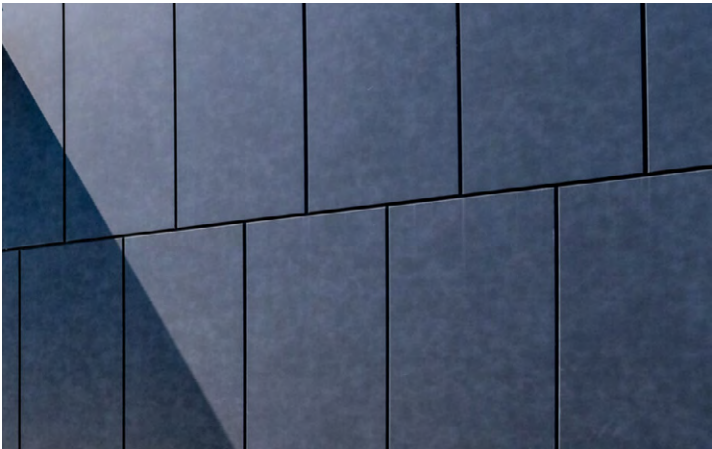




**MTP-01. FORMED METAL WALL PANEL SYSTEM**  
*(ENTRY CANOPY + PORTALS)*

Pressure Equalized Rainscreen System  
Rivetless Dry Joint Plate System  
Aluminum Plate:  
Thickness: 3mm  
Formed Panel Depth: 0.875 inches (Minimum)  
Aluminum extrusions: Mill finish  
Aluminum Color Strip Backer  
Color: Relic

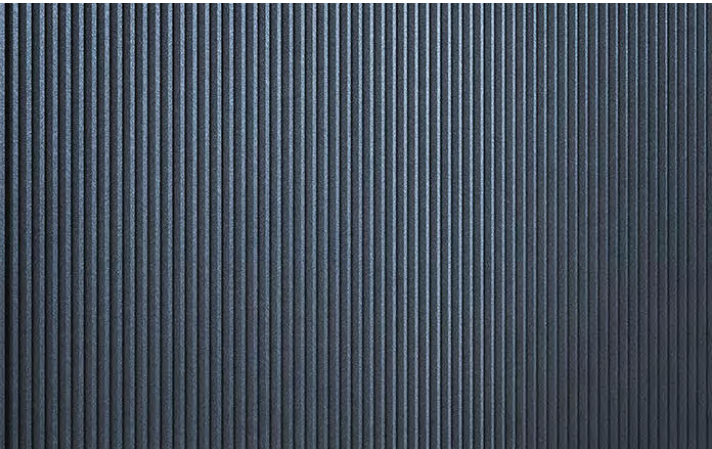
TOTAL AREA = SQFT



**MTP-02. FORMED METAL WALL PANEL SYSTEM**  
*(NORTH + EAST FAÇADE WALL)*

Pressure Equalized Rainscreen System  
Rivetless Dry Joint Plate System  
Aluminum Plate:  
Thickness: 3mm  
Formed Panel Depth: 0.875 inches (Minimum)  
Aluminum extrusions: Mill finish  
Aluminum Color Strip Backer (Dry-Joint)  
Color: Gun Metal

TOTAL AREA = SQFT



**MTP-03. CUSTOM FORMED CORRUGATED METAL WALL PANEL SYSTEM**

Pressure Equalized Rainscreen System  
Factory-formed metal panel  
Material: Aluminum Alloy  
Thickness: 2mm  
Panel Width: 24 inches (maximum)  
Panel Length: 177 inches (maximum)  
Panel Orientation: Vertical  
Concealed Panel Clips: Stainless Steel  
Color: Gun Metal

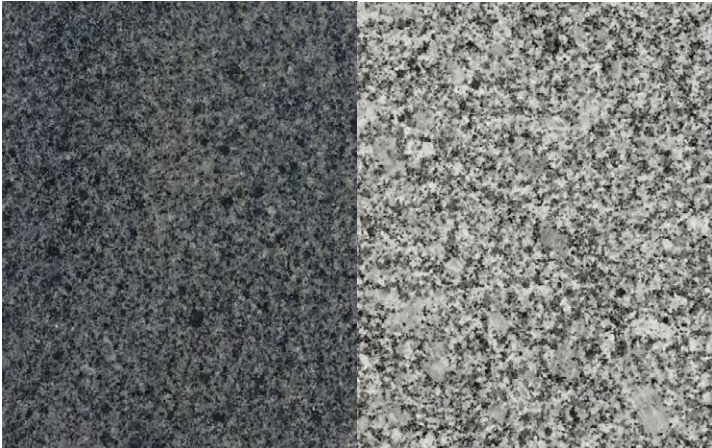
TOTAL AREA = SQFT



**WDP-01. WOOD SOFFIT**

Thermally modified wood cladding  
Thermory Benchmark Pine Cladding (Basis-of-Design)  
Profile: 1x6 C87 V-Groove (JEM)  
Texture: Smooth  
Color: Brown  
Finish: Factory applied UV Protective Oil  
Installation: Concealed stainless steel screws (hidden)

TOTAL AREA = SQFT



**GPT-01. GRANITE PLAZA TILE**

Manufacturer: Coldspring (Basis-of-Design)  
Size: Varies  
Thickness: 1.5” (minimum) Vehicular rated  
Colors: Charcoal Black (50% Mix) + Iridian (50% Mix)  
Finish: Diamond 10 (Anti-slip + fall rating DCOF > 0.55)

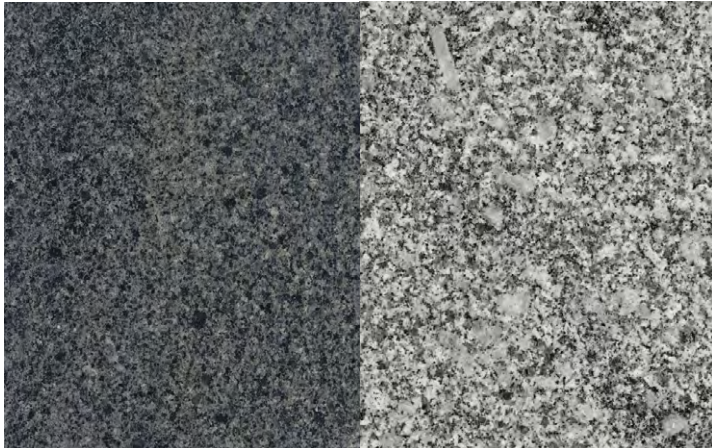
ALTERNATE:  
Concrete Unit Paver  
Size: Varies  
Thickness: 3” (Vehicular rated)  
Colors: Custom Blend (5 Color Types)  
Finish: Tudor

TOTAL AREA = SQFT



**GRA-01. GREEN ROOF ASSEMBLY**  
*(FUTURE PHASE - BID ALTERNATE)*

Hydrotech Extensive Garden Roof Assembly (Basis-of-Design)  
Vegetation: Sedum + Perennials (Climate Zone 5A) as recommended by Vendor  
Depth: 4”-6” LiteTop Growing Media (Maximum)  
System filter geotextile sheet made of non-deteriorating, polypropylene fibers  
Drainage: Gardendrain GR30  
Insulation: Polyiso HD Roof Board (R-30 minimum)  
Tapered Insulation (as required)  
Root Stop HD (30 mil Polyethylene geo-membrane)  
Waterproofing: Hot fluid applied asphalt membrane (MM 6125) with fabric reinforcement assembly  
Substrate: Composite Metal Roof Decking (5” Minimum)

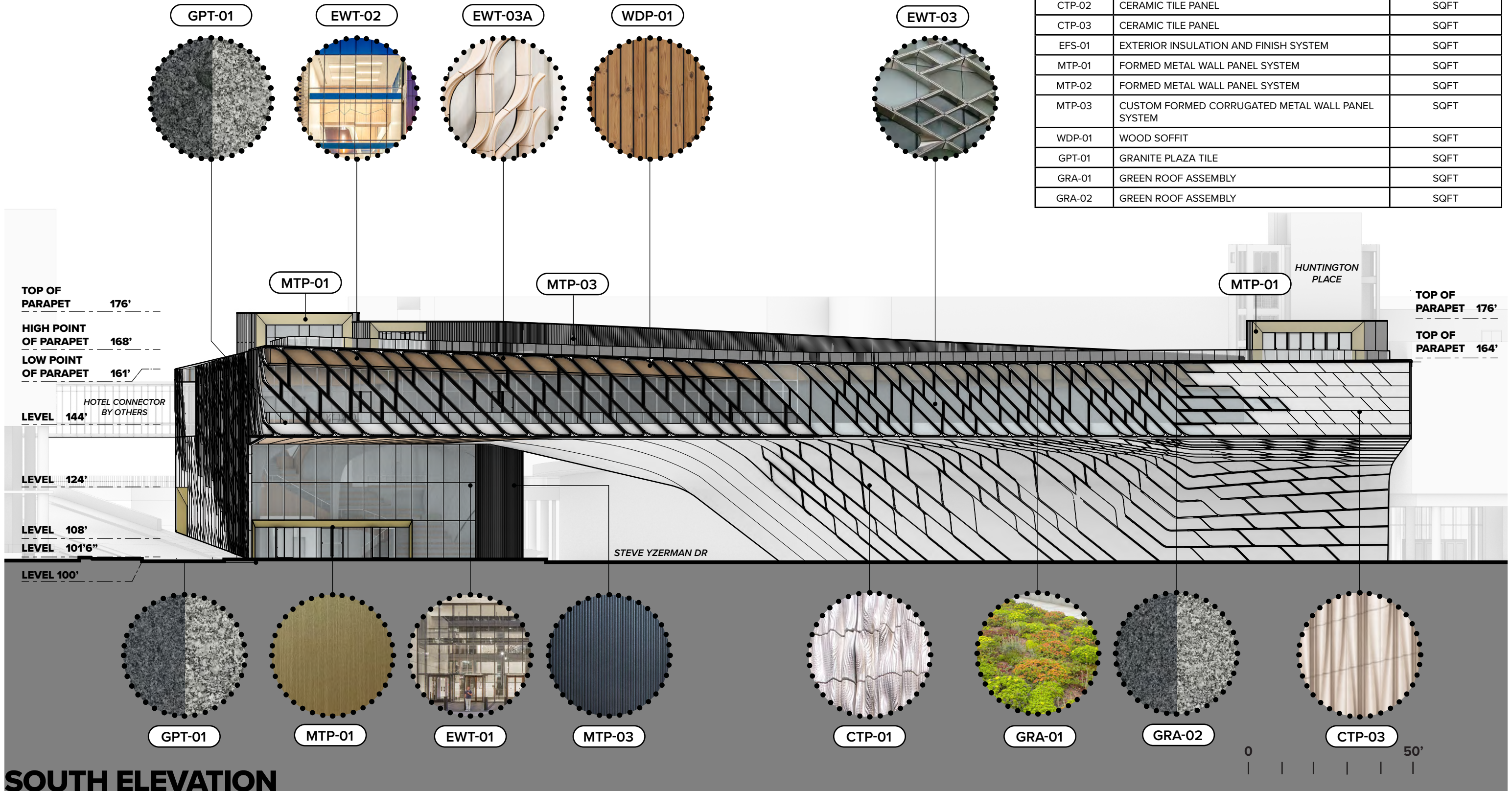


**GRA-02. ULTIMATE ROOF ASSEMBLY**  
*(FUTURE PHASE - BID ALTERNATE)*

Hydrotech Ultimate Assembly (Basis-of-Design)  
Hanover Architectural Prest Pavers  
Size: 18”x36”  
Thickness: 2” (Standard)  
Color: Custom Blend (selected by Architect / Owner)  
Finish: Tudor  
Adjustable Pedestal System  
Insulation: Polyiso HD Roof Board (R-30 minimum)  
Tapered Insulation (as required)  
Waterproofing: Hot fluid applied asphalt membrane (MM 6125) with fabric reinforcement assembly  
Substrate: Composite Metal Roof Decking (5” Minimum)



ELEVATION MATERIAL TAGS		
TAG	MATERIAL DESCRIPTION	TOTAL AREA
EWT-01	LOBBY GLAZING SYSTEM	SQFT
EWT-02	ALUMINUM-FRAMED GLAZING SYSTEM	SQFT
EWT-03	DIAGONAL GLAZING WALL	SQFT
EWT-03A	DIAGONAL SCREEN WALL	SQFT
CTP-01	CERAMIC TILE PANEL	SQFT
CTP-02	CERAMIC TILE PANEL	SQFT
CTP-03	CERAMIC TILE PANEL	SQFT
EFS-01	EXTERIOR INSULATION AND FINISH SYSTEM	SQFT
MTP-01	FORMED METAL WALL PANEL SYSTEM	SQFT
MTP-02	FORMED METAL WALL PANEL SYSTEM	SQFT
MTP-03	CUSTOM FORMED CORRUGATED METAL WALL PANEL SYSTEM	SQFT
WDP-01	WOOD SOFFIT	SQFT
GPT-01	GRANITE PLAZA TILE	SQFT
GRA-01	GREEN ROOF ASSEMBLY	SQFT
GRA-02	GREEN ROOF ASSEMBLY	SQFT





MTP-02

EWT-03A

MTP-03

WDP-01

GRA-01

GRA-02

MTP-01

TOP OF PARAPET 176'

LOW POINT OF PARAPET 161'

LEVEL 144'

LEVEL 124'

LEVEL 108'

TOP OF PARAPET 176'

TOP OF PARAPET 164'

LEVEL 144'

LEVEL 101'6"

LEVEL 100'

2ND AVE

STEVE YZERMAN DR

HUNTINGTON PLACE

HOTEL  
CONNECTOR  
BY OTHERS

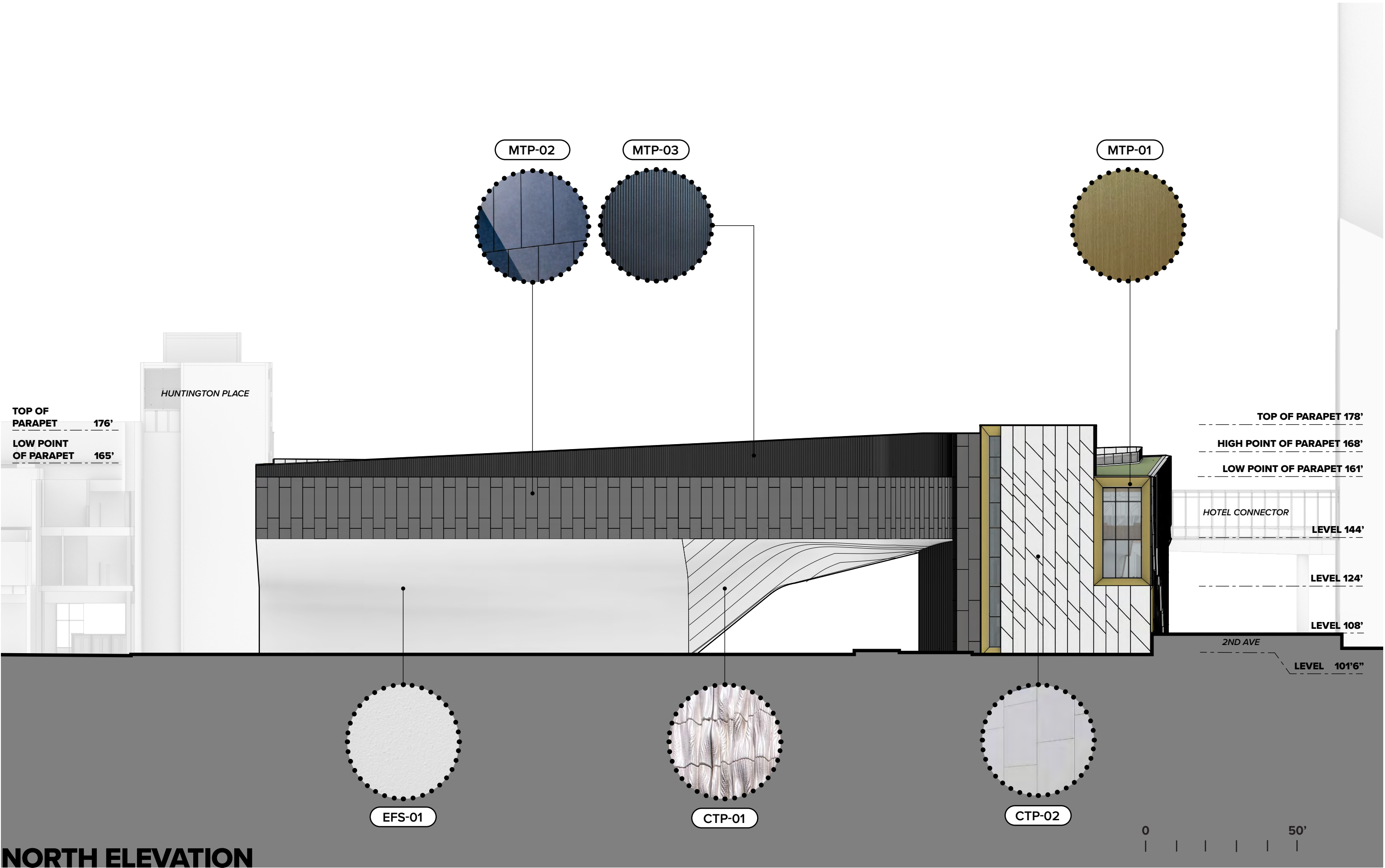
MTP-01

CTP-03

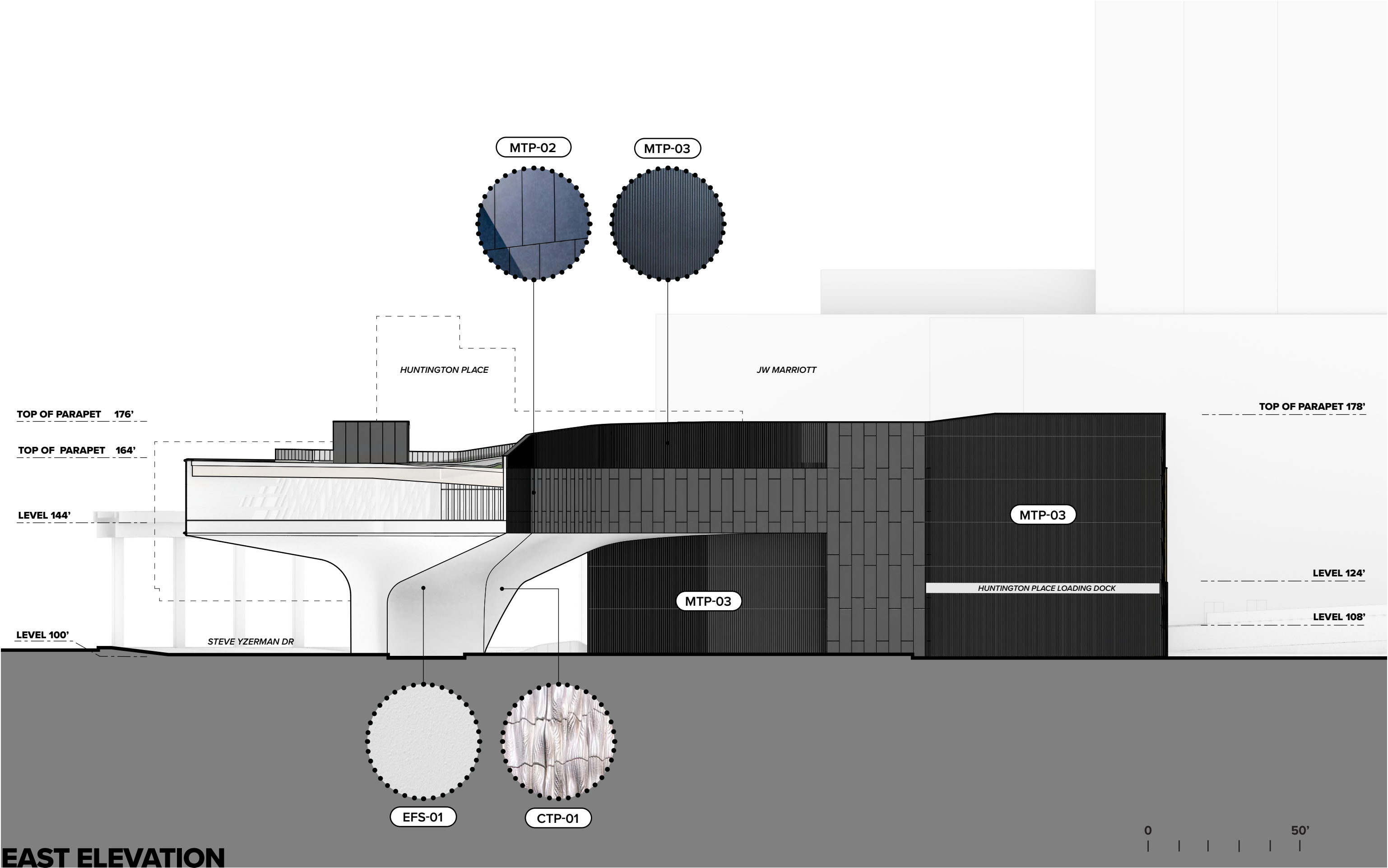
EWT-03

WEST ELEVATION

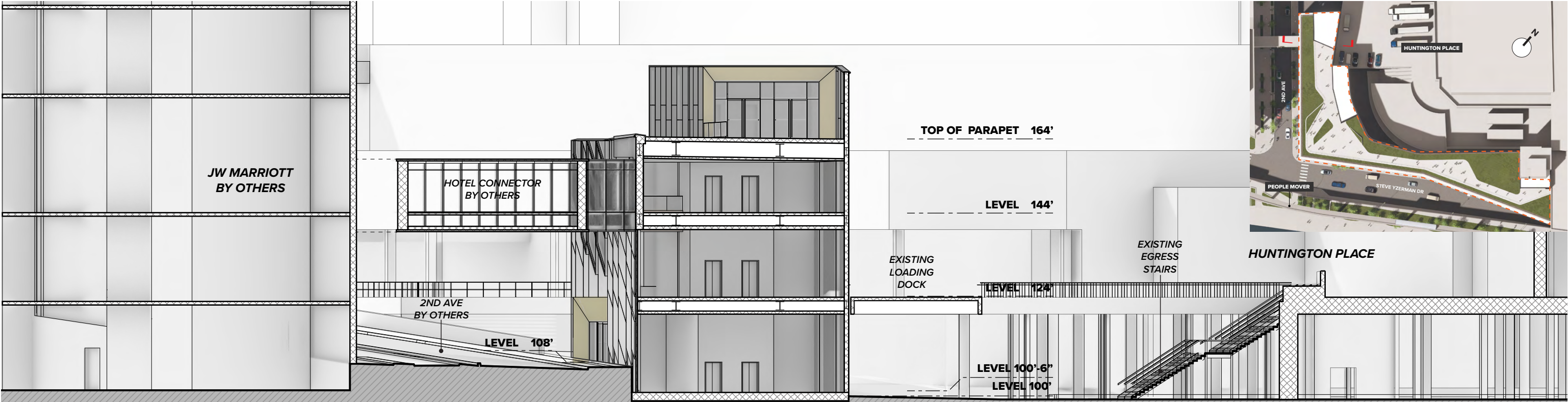
0 50'



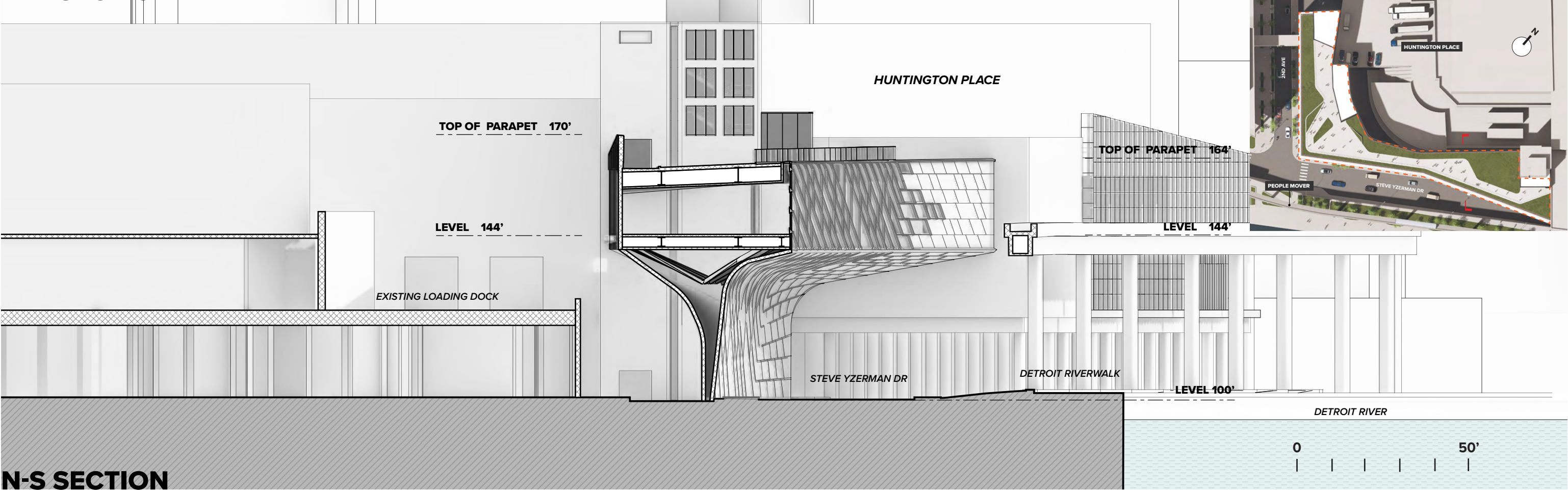




EAST ELEVATION



E-W SECTION



N-S SECTION

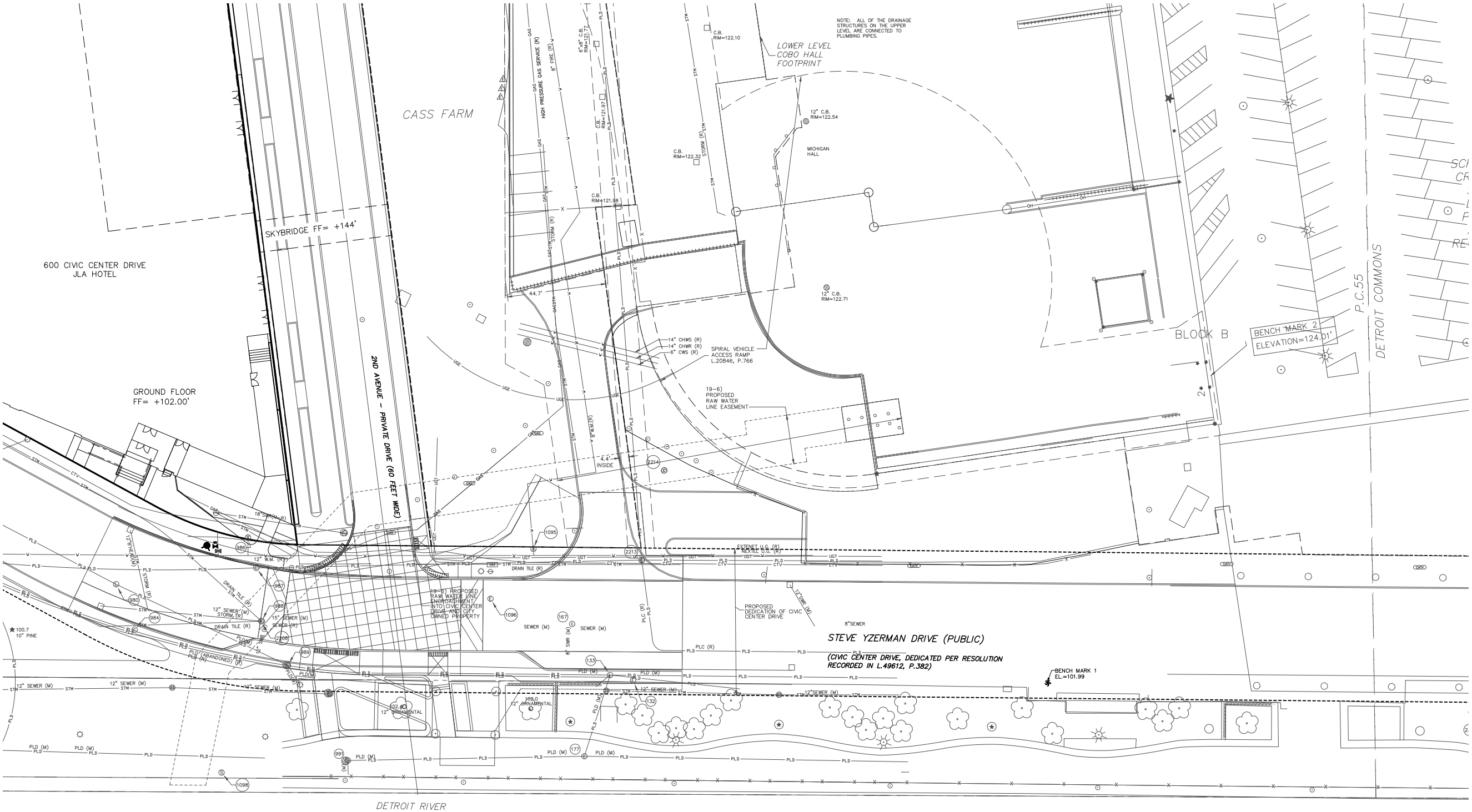
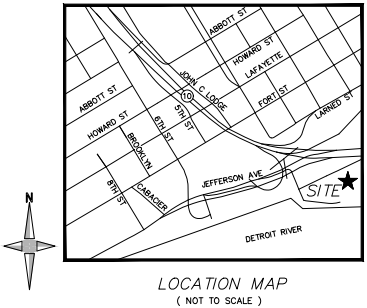
**HUNTINGTON PLACE  
SKYBRIDGE CONNECTOR**

**CONCEPTUAL SITE PLAN + ZONING ANALYSIS**



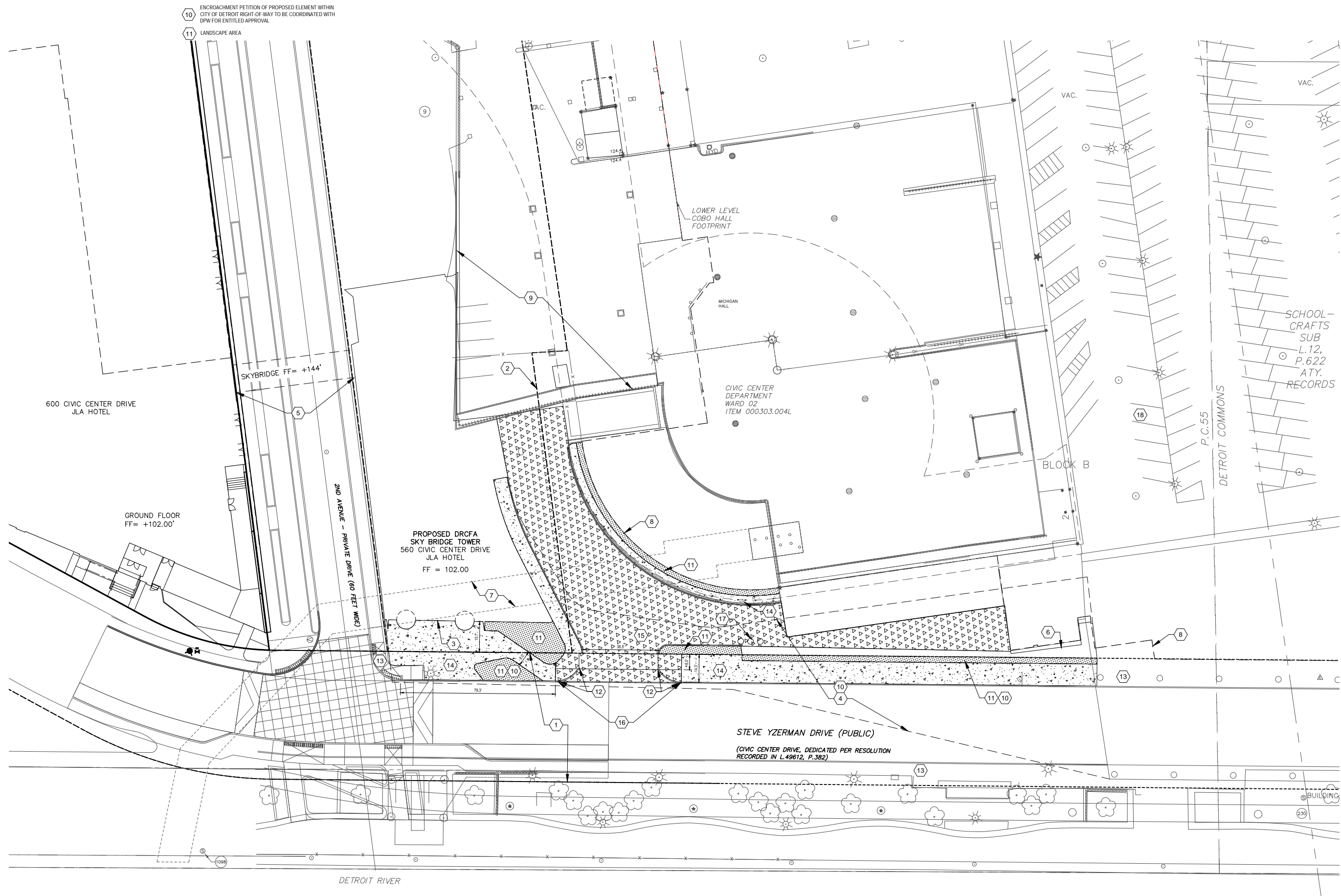
EXISTING BYLAYER

SECTION LINE	SHRUBLINE	○ SAN, MH	○ OVERFLOW/OUTLET STRUCTURE	△ TELE. RISER	○ PARKING METER	ASPH. ASPHALT
E/ PAVEMENT	TREE LINE	○ SAN, CLEAN OUT	○ STORM CLEAN OUT	△ TELE. MH	○ RESIDENTIAL MAIL BOX	CONC. CONCRETE
CURB	WATER EDGE	○ SAN, RISER	○ ROUND CB	△ CABLE CROSS BOX	○ U.S. MAIL BOX	A.C. AIR CONDITIONER
○ GRAVEL	WETLAND LINE	○ SAN, PUMP STATION	○ LIGHT POLE	△ PAY PHONE	○ EXISTING ELEVATION	G.P. GUARD POST
○ ROAD	STORM LINE	○ COMB. MH	○ UTILITY POLE	○ GUY	○ SOIL BORING	C.L.F. CHAIN-LINK FENCE
E/ WALK	SAN. LINE	○ GATE VALVE	○ ELEC. TRANS.	○ MANHOLE	○ MONITORING WELL	D.L. DOOR LEDE
RAILROAD	WATER LINE	○ HYDRANT	○ AIR CONDITIONER	○ SHAW	○ LAWN RR. HEAD	F.F. FINISHED FLOOR
E/ BRICK	GAS LINE	○ WATER VALVE	○ ELEC. MH	○ PHOTO. POST/GUARD POST	○ CENTERLINE R.R. TRACK	O.H. OVERHANG
MISC. LINE	UG GAS LINE	○ UG TELE. LINE	○ ELEC. METER	○ DECIDUOUS TREE	○ MISC. TOPO. SHOT	F.L. FOUND IRON
FENCE	UG TELE. LINE	○ UG CABLE TV LINE	○ ELEC. RISER	○ UTILITY FLAG	○ SURVEY CONTROL POINT	S.I. SET IRON
GUARD RAIL	WALL	○ COMBINED SEWER	○ FDC CONNECTION	○ BLK. CORNER (FIELD LOCATED)	○ FOUND IRON	F.I.P. FOUND IRON PIPE
BLDG. LINE	PLD. LINE	○ STORM MH	○ IRRIGATION CONTROL BOX	○ HANDICAP PARKING	○ FOUND NAIL	M. MEASURED
OVERHEAD WIRES	STEAM	○ CATCH-BASIN	○ PUBLIC LIGHTING MH	○ WETLAND FLAG	○ F. CUT CROSS	R. RECORD
RAILING	TELE	○ EX ROW	○ GAS METER		○ SECTION COR.	F.M. FOUND MONUMENT
OVERHAND LINE			○ GAS RISER		○ FENCE POST	S.M. SET NAIL
T-BANK			○ GAS VALVE		○ BENCHMARK	C.M.P. CORRUGATED METAL PIPE
B/BANK			○ GAS MH		○ FOUND PIPE	R.C.P./C.P. REINFORCED/ NON-REINFORCED CONCRETE PIPE
CL. DITCH/STREAM						



EXISTING CONDITIONS





# OVERALL SITE PLAN