

Item #7-R1

TOTAL SIGN AREA: 15.5 Sq. Ft.

Electronic Message Center
Monument Sign
Double Sided - Qty (1)

Lead #: P21000022

PROJECT: RB Mariners Church-Detroit

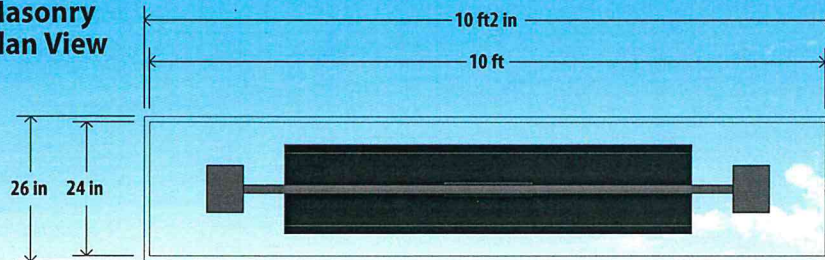
FILE: RB Mariners Church-Detroit-EMC 7-R1

SITE ADDRESS: 170 E Jefferson Ave,
Detroit, Mi. 48226

LEAD: GM	REVISION: CG 9-13-19 CG 1-13-20 KP-3-22-22 CG 12-16-22 DM 3-27-23	REVISION: DM 9-14-23 DM 9-25-23 DM 102-6-23 DM 9-7-23 DM 9-8-23 DM 9-12-23
LAYOUT: CG		
Date: 9-11-19		

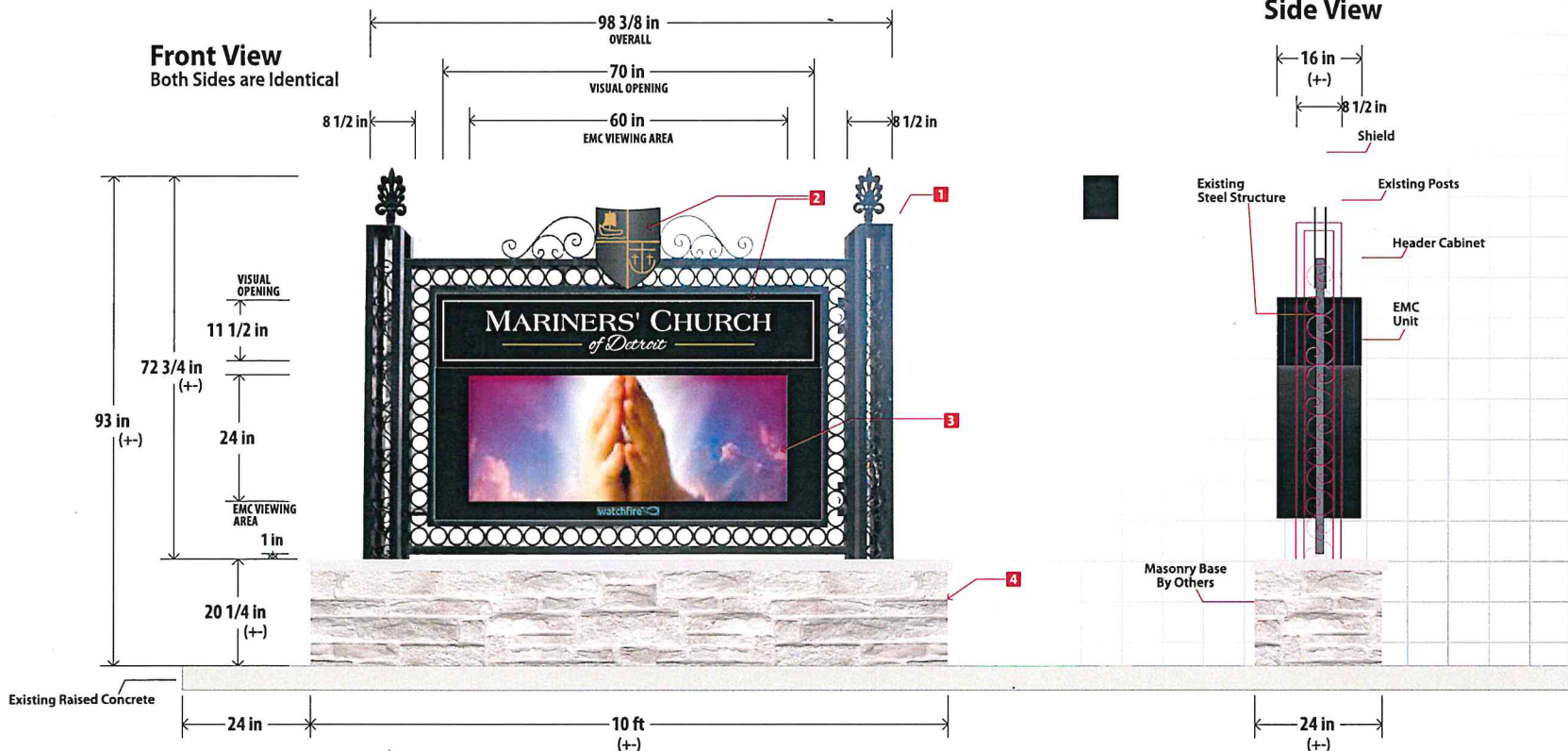
EMC Viewing Area: 24" x 60" = 10 Sq. Ft.
Visual Opening: 11.5" x 70" = 5.5 Sq. Ft.
TOTAL SIGN AREA = 15.5 Sq. Ft.

Masonry Plan View

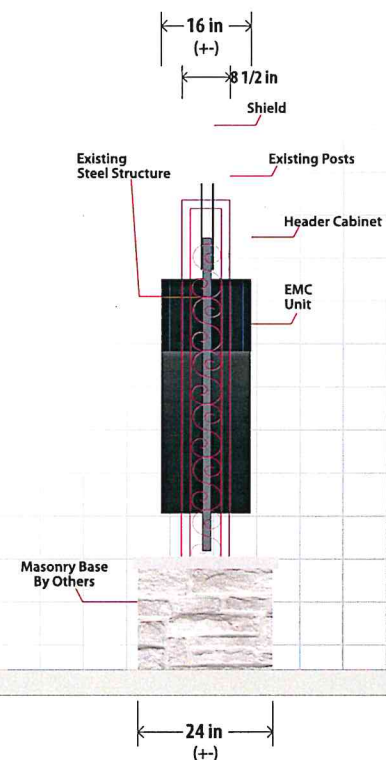


Front View

Both Sides are Identical



Side View



- 1** Existing Structure:
Renovation by Others
- 2** Header Cabinet/ Double Sided
Fabricated aluminum cabinet
and retainers.
Acrylic faces with vinyl
graphics applied.
Internally illuminated with
L.E.D.s
- 3** EMC Unit:
8mm -- WatchFire Series
Electronic Message Center
72 x 180 matrix
Full Color L.E.D. Display
24" x 60" viewing area
(29" x 72.5" cabinet)
- 4** Masonry base by others

Mounting / Footings:
Mounting Plates T.B.D.

Designs, details and plans represented herein are the sole property of Phillips Sign & Lighting, Inc. All or any part of these designs (except registered trademarks) are protected. Attempts to duplicate designs without written consent may result in Legal Repercussions.

phillips SIGN & LIGHTING inc.

Ph: 586.468.7110

*Verify Sign for Mounting in Field
* Verify New Sign Location

visit us at: **phillipssign.com**

Approved: _____ Date: _____

Permit: _____ - _____

40920 Executive Drive
Harrison Twp., MI
48045-1363