



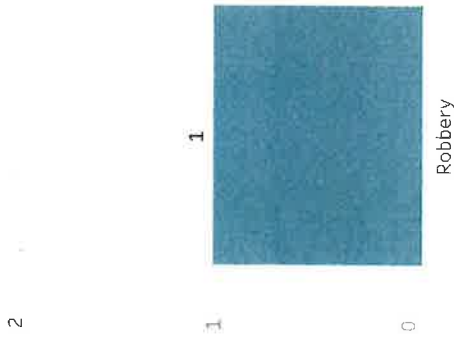
# Detroit Police Department Weekly Report on Facial Recognition

Printed on Tuesday, April 27, 2021

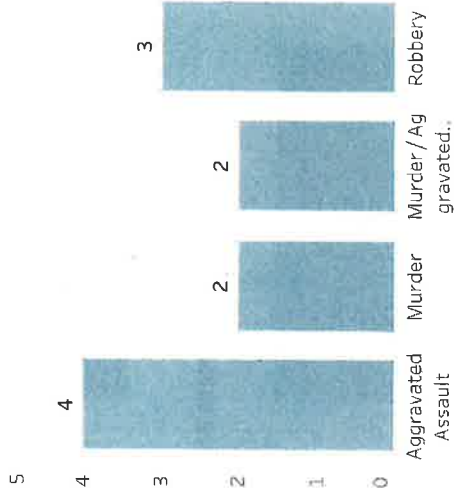
Pursuant to Detroit Police Department Directive 307.5 - 5.1, below are the number of facial recognition requests that were fulfilled, the crimes that the facial recognition requests were attempting to solve, and the number of leads produced from the facial recognition software.

This report includes all requests made from Monday, April 19, 2021 through Sunday, April 25, 2021, as well as Q2 2021 quarter to date (4/1/2021 through 4/25/2021) and 2021 year to date (4/1/2021 through 4/25/2021). 0 searches were performed in violation of policy during the prior week, 0 during the current quarter, and 0 during the current year.

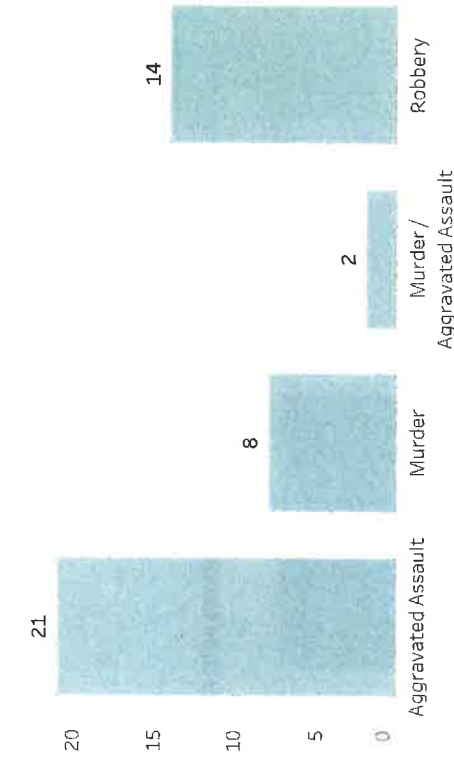
### Prior Week Count of Crimes



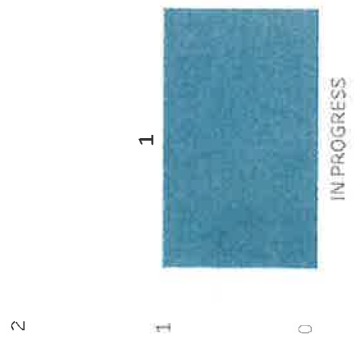
### Quarter to Date Count of Crimes



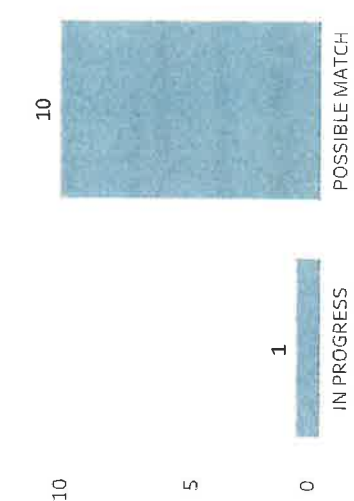
### Year to Date Count of Crimes



### Prior Week Count of Leads



### Quarter to Date Count of Leads



### Year to Date Count of Leads





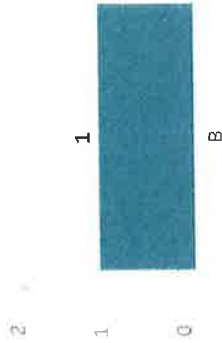
# Detroit Police Department Weekly Report on Facial Recognition

Printed on Tuesday, April 27, 2021

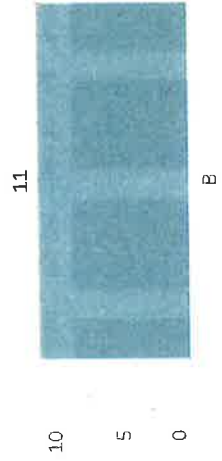
Pursuant to Detroit Police Department Directive 307.5 - 5.1, below are the number of facial recognition requests that were fulfilled, the crimes that the facial recognition requests were attempting to solve, and the number of leads produced from the facial recognition software.

This report includes all requests made from Monday, April 19, 2021 through Sunday, April 25, 2021, as well as Q2 2021 quarter to date (4/1/2021 through 4/25/2021) and 2021 year to date (1/1/2021 through 4/25/2021). 0 searches were performed in violation of policy during the prior week, 0 during the current quarter, and 0 during the current year.

### Prior Week Race of Probe Photo



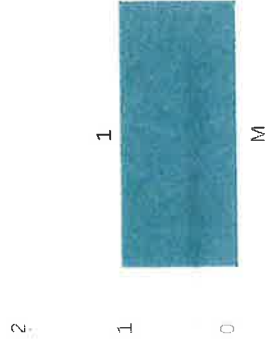
### Quarter to Date Race of Probe Photo



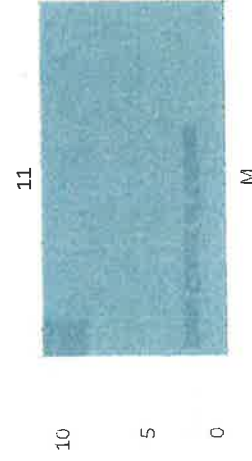
### Year to Date Race of Probe Photo



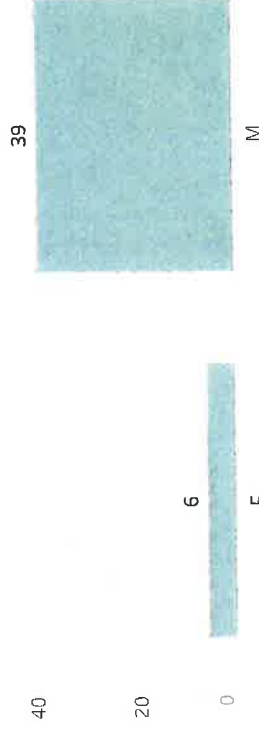
### Prior Week Gender of Probe Photo



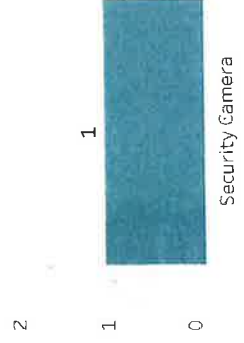
### Quarter to Date Gender of Probe Photo



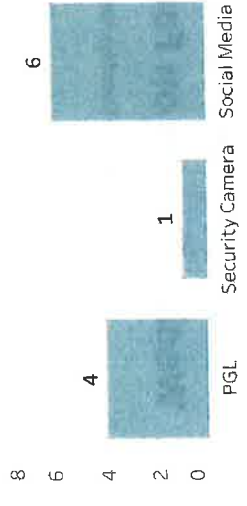
### Year to Date Gender of Probe Photo



### Prior Week Source of Probe Photo



### Quarter to Date Source of Probe Photo



### Year to Date Source of Probe Photo

