



CIVIL RIGHTS USE OF FORCE REPORT

(January 1, 2022 through September 30, 2022)

JAMES E. WHITE
CHIEF OF POLICE

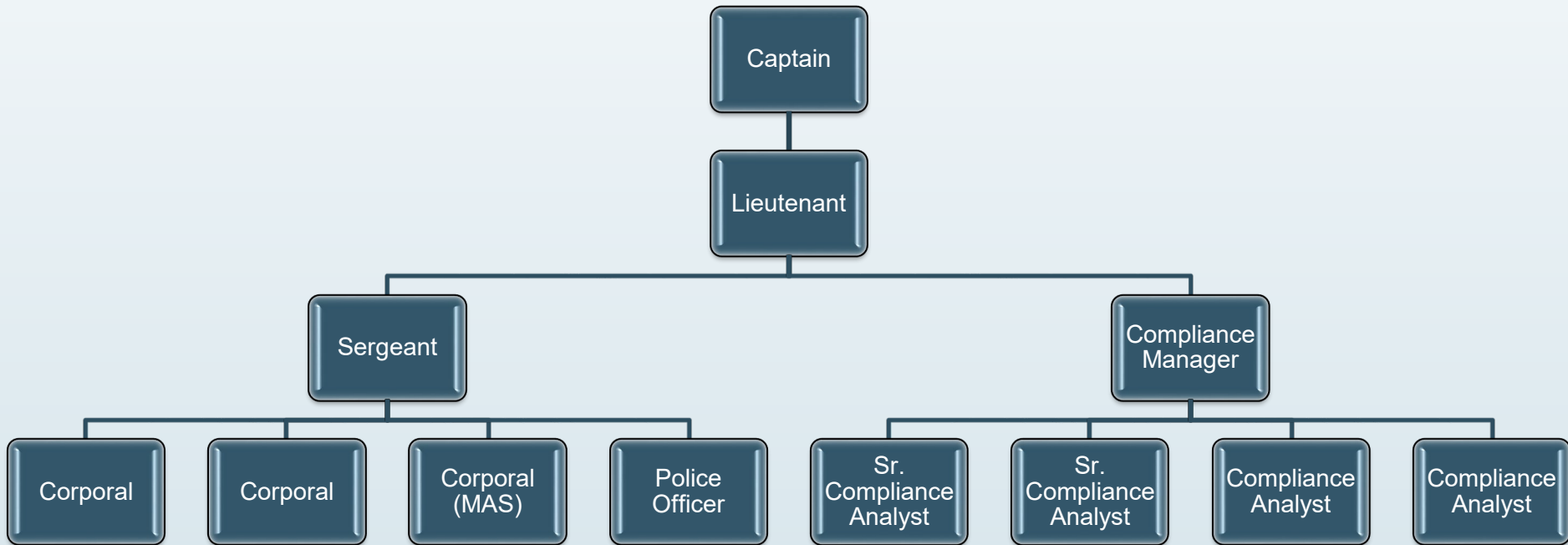


CIVIL RIGHTS DIVISION RESPONSIBILITIES

- **Reviewing Policy and Procedures**
- **Auditing Use of Force Reporting to Ensure Policy Compliance**
- **Collect Statistical Data**
- **Communicating with Department Commands**
- **Recommending Policy Change**



STAFFING & ORGANIZATIONAL CHART





USE OF FORCE STATISTICS

Use of Force 3 rd Quarter YTD Comparison				
	2021 YTD	2022 YTD	Change 2021- 2022	% Change
Category 1	41	32	-9	-22%
Category 2	214	268	54	25%
Category 3	547	450	-97	-18%
Category 4	8	13	5	63%
Acquire Target	110	89	-21	-19%
Total	920	852	-68	-7% ↓



USE OF FORCE / ARREST RATIO

>>>>

• 2022 Arrest = 13,135*

13,135 >

763 =

5.8%



USE OF FORCE CATEGORIES

Category 1*

- 22% Decrease
- Any U of F resulting in serious injury or death
- Discharge of firearm except at animals/range
- U of F resulting in broken bones or hospitalization
- Chemical spray against restrained individual
- DPD Canine bites
- Taser drive stun, probe to a sensitive area, or to a member of a special population

Category 2

- 25% Increase
- Physical Controls
- Intermediate Weapons
- Any incident resulting in **injury or complaint of injury** that does not meet the criteria of Category 1

Category 3

- 18% Decrease
- Any incident where force was used without an injury or complaint thereof
- Taser Discharge that does not make contact with the suspect
- Canine Apprehension



USE OF FORCE CATEGORIES

Category 4

- 63% Increase
- The member, at the request of EMS personnel, physically assists by placing the subject/patient into an ambulance without injury or accusations of injury
- Forcible Handcuffing without any additional use of force

Drawing a Firearm and Acquiring a Target

- 19% Decrease
- The member draws a firearm and acquires a target (person, subject) and there is no further use of force
- The parent command shall investigate these incidents

Destruction of Animal

- 17% Increase
- 2021 = 35
- 2022 = 41
- Authorized when necessary to prevent imminent harm/injury to another person or animal, but without opportunity to retreat
- Whether the animal is hit or missed, the officer's supervisor shall prepare a report



CONDUCTED ENERGY WEAPON COMPARISON

CEW Comparison 2021 to 2022* July 1st through September 30th

	2021 YTD	2022 YTD	Change 2021-2022	% Change
Taser Discharge	103	131	28	27%
Taser Deployment	144	193	49	34%
Accidental Discharge	0	0	0	0
Total	247	324	77	31% ↑




Axon TASER X2 Conducted Energy Weapon (CEW) / 50,000 Volts



SUBJECT CONTROL COMPARISON

Compliance & Physical Controls + Intermediate Weapons Comparison (Categories 2 -4)

January 1st through September 30th

	2021	2022	Change 2021-2022	% Change 2021-2022
Hard Hands	612	556	-56	-9%
Joint Locks	61	66	5	8%
Chemical Spray	6	5	-1	-17%
PR-24	0	1	1	NA
Pressure Points	4	6	2	50%
Total Incidents	683	634	-49	-7% 



USE OF FORCE TRAINING





USE OF FORCE CONTINUUM

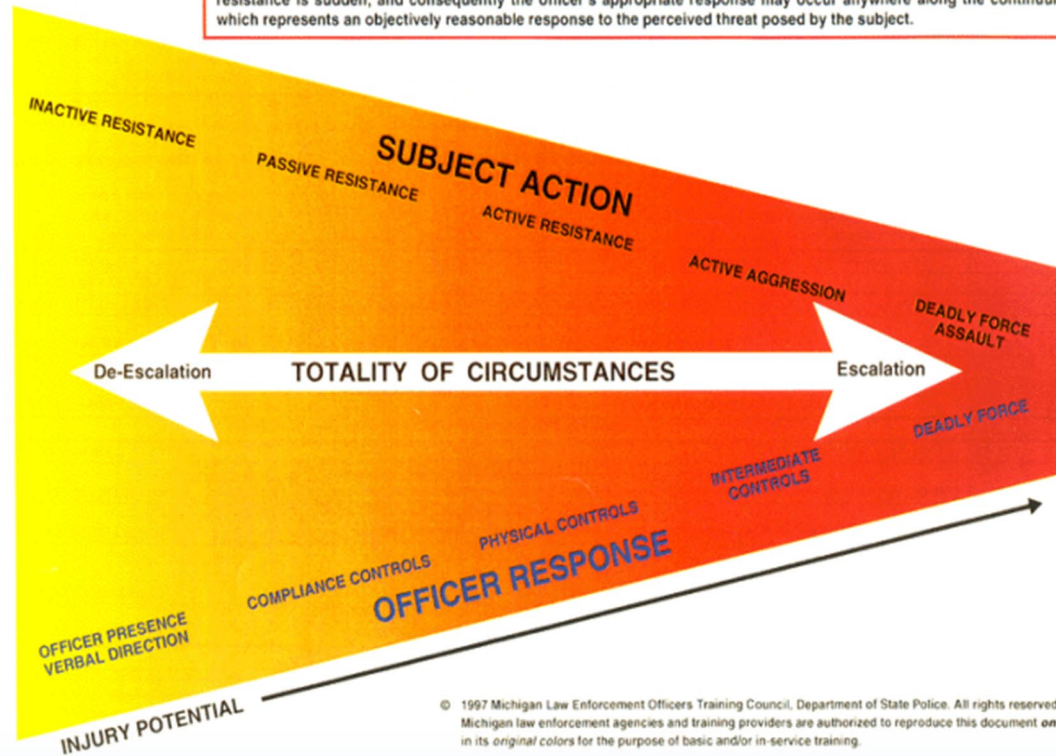


MICHIGAN LAW ENFORCEMENT OFFICER-SUBJECT CONTROL CONTINUUM

A Guide for Escalation and De-Escalation of Subject Control

CAUTION: It is not possible for these Guidelines to cover all of the possible situations that occur within the law enforcement officer's job. Therefore, this continuum is offered only as a general guide to using force in confrontation or arrest situations. The officer must understand that situations occur where the escalation and/or de-escalation of resistance is sudden, and consequently the officer's appropriate response may occur anywhere along the continuum which represents an objectively reasonable response to the perceived threat posed by the subject.

(The Use of Force Continuum)



© 1997 Michigan Law Enforcement Officers Training Council, Department of State Police. All rights reserved. Michigan law enforcement agencies and training providers are authorized to reproduce this document **only** in its original colors for the purpose of basic and/or in-service training.



PRIMARY CONCERNS





Questions?