

Parks and Recreation

# Lighting and Cameras in Detroit's Parks

- Chandler
- Eliza Howell,
- Maheras-Gentry
- Rouge Park "North"



**TAKE PART**  
Opportunity Rising



# Outline

- Cameras & Lighting Overview
- Benefits & Details of Use
- Locations
  - Chandler
  - Eliza Howell
  - Maheras-Gentry
  - Rouge Park North
- Timeline
- Summary
- Q&A

# Cameras & Lighting

## Overview

# Camera & Lighting in Detroit Parks Project

## MEETING NOTICE (Community Outreach Ordinance)

### Admin Summary:

Cameras and lighting will be installed in four Detroit Regional Parks that have a high number of security incidences: Chandler, Eliza Howell, Maheras-Gentry, Rouge North. This project will provide increased security and safety within park areas, and enhances accessibility for park users when there is less daylight during open park hours. Construction will strive to have minimal impact (bored / trenched along the roadway), as well as wildlife will be considered in the light pole design. The number and exact location of light poles and cameras will be determined on a design and build basis.

### Additional Feedback:

A detailed report of the Lighting & Camera project can be found at [detroitmi.gov/parkprojects](https://detroitmi.gov/parkprojects), where feedback can be submitted.

(THIS MEETING FULFILLS THE REQUIREMENTS OF COMMUNITY OUTREACH ORDINANCE)

*With advance notice of seven calendar days, the City of Detroit will provide interpreter services at public meetings, including language translation and reasonable ADA accommodations. Please contact CROP at 313-224-4950, through TTY number 711 or email [crio@detroitmi.gov](mailto:crio@detroitmi.gov) to schedule services.*

## Cameras

- Cameras will be part of the green light system but will not have a green flashing light
- The number and exact locations of the cameras will be determined based on a design-build process
- Monitoring of the cameras will be done primarily by GSD Security

## Lighting

- Light poles are what will be installed
- Light fixtures on the poles will be downward-directed
- Lumens will be a warmer tone that is more wildlife-friendly
- Entries, road and parking areas will be the focus of the project
- Lighting will be LED (not solar powered)
- Brightness will be between 7,000 – 17,000 Lumens



## Benefits & Details of Use

- Cameras & lighting provide increased security and safety within park areas
  - Improves visibility
  - Crime deterrent
  - Incident investigation
- Lighting enhances accessibility for park users that can only attend parks during early or late open times when there is less daylight
- Construction will be done in a way so that impact is minimized (bored / trenched along the roadway)



# Locations of Use

Chandler, Eliza Howell, Maheras-Gentry & Rouge Park



# Chandler Park

(12831 Frankfort St)

Lighting and cameras will be installed along the main access road through the park



# Eliza Howell Park

(23701 Fenkell Ave)

Lighting and cameras  
will be installed along  
the main access loop  
road located within  
the northwest section  
of the park.



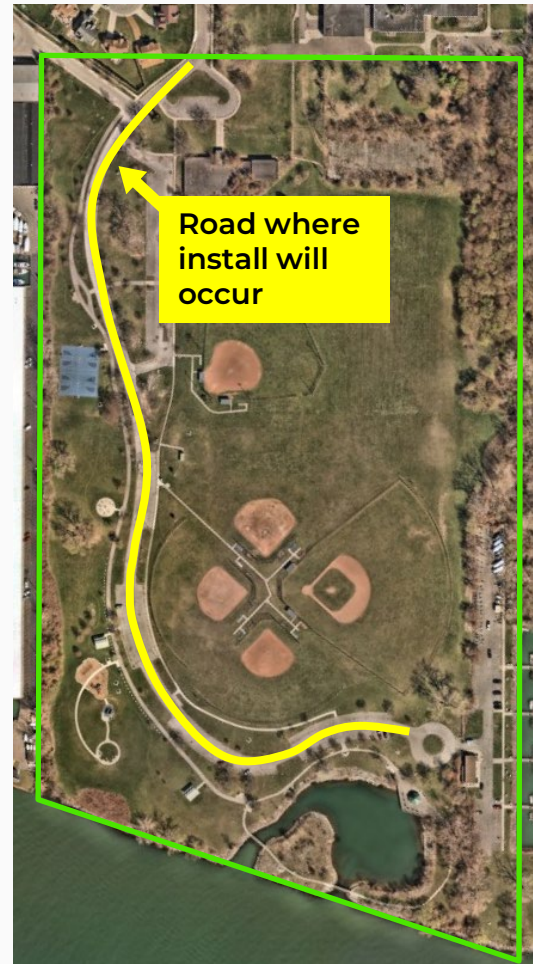
**TAKE PART**  
Opportunity Rising



# Maheras-Gentry Park

(12550 Avondale St)

Lighting and cameras will be installed along the main access road through the park

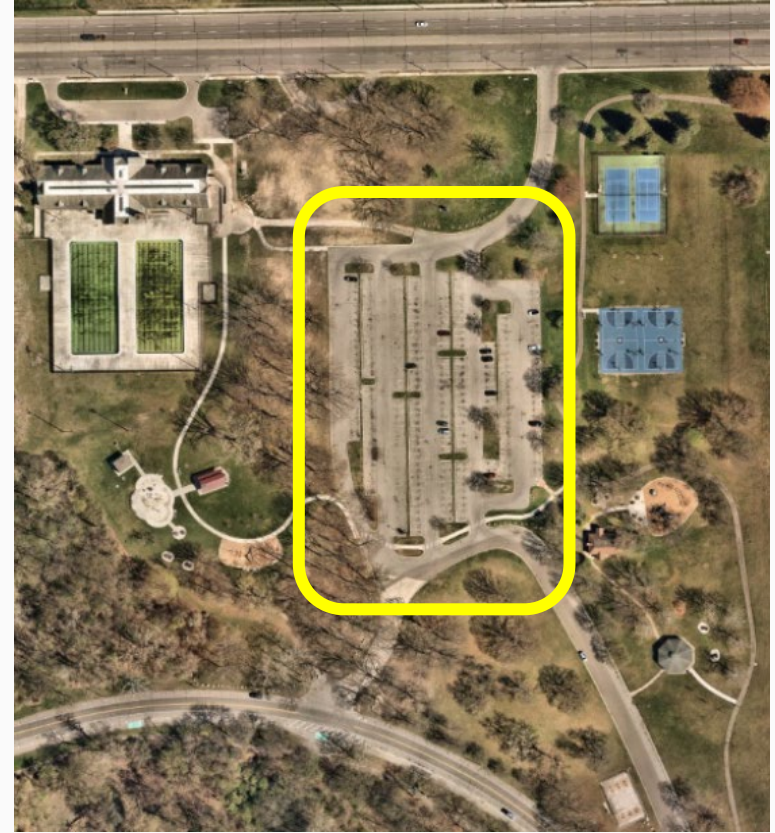


**TAKE PART**  
Opportunity Rising

# Rouge Park

(21800 Joy Rd)

Lighting and cameras will be installed within the Brennan parking lot.



**TAKE PART**  
Opportunity Rising

# Project Timeline

## PLANNING

Fall 2025 - Winter 2026

## INSTALLATION

Spring 2026

# Summary

- Cameras and lighting will be installed in 4 Detroit Regional Parks: Chandler, Eliza Howell, Maheras-Gentry, Rouge
- Lighting will provide increased security and safety within park areas for park users when there is less daylight during open hours
- Cameras will provide increased security and safety within park areas 24/7
- Cameras and lighting will be installed with minimized construction impact during Spring season 2026



# Thank You

Questions?



**TAKE PART**  
**Opportunity Rising**

