

PLAN YOUR PARK

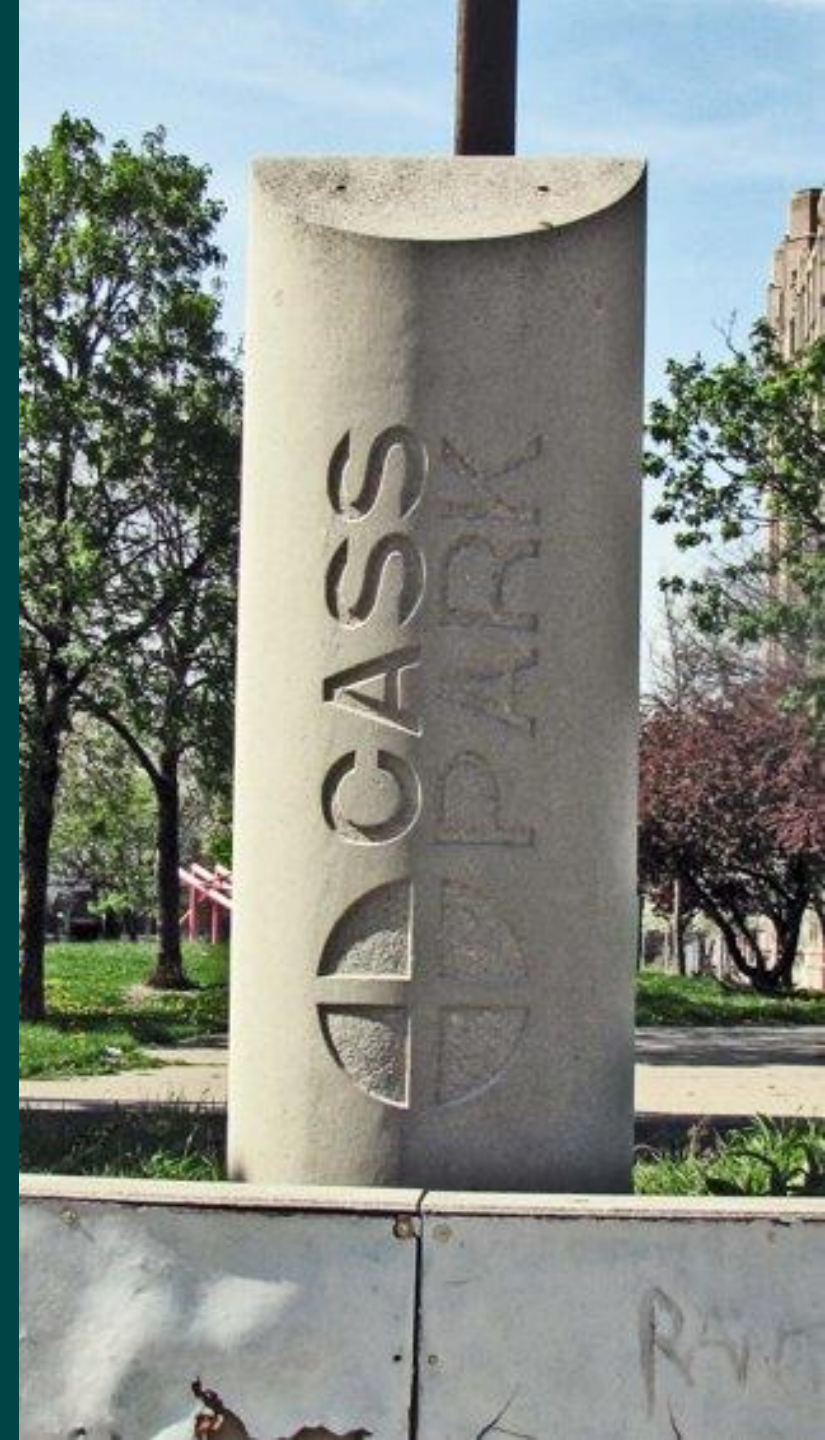
Take part in shaping your
community's park!



Community Meeting
CASS PARK
March 26, 2025

Agenda for Today

- Welcome & Introductions
- Background
- Past Engagement
- Concept & Draft Design
- Feedback
- Next Steps



Project Background

The City of Detroit has a Parks & Recreation Strategic Plan that outlines how to equitably fund improvements across our 300+ park system (more info at detroitmi.gov/parksplan) - and Cass Park is in the current phase for improvement!

The City has \$2.5 million for this project. We anticipate this may be enough for a significant first phase of improvements.

The amenities and design of the park will be determined based on community input.



TIMELINE

PARK IMPROVEMENTS AT CASS PARK



ENGAGEMENT STRATEGY



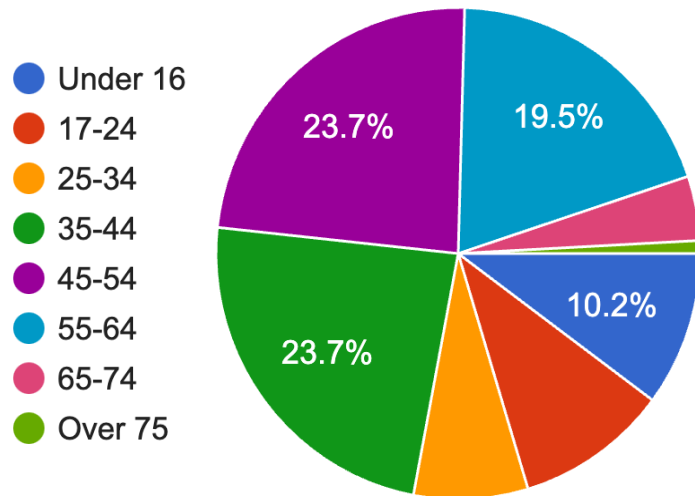
Where we are now:

- 1) **Online survey** – Nov-Dec
- 2) **Community / Stakeholder Meeting** – Nov 14th
- 3) **Targeted Outreach:**
 - Cass Tech PTSO – Mar 20th
 - Robert Burns Club – Jan 29th
 - Food Distribution Group – Mar 17th
- 4) **Public meeting** – Mar. 26th
- 5) **Cass Student Survey** – Mar-Apr

WHAT WE HEARD: Who Responded

SURVEY

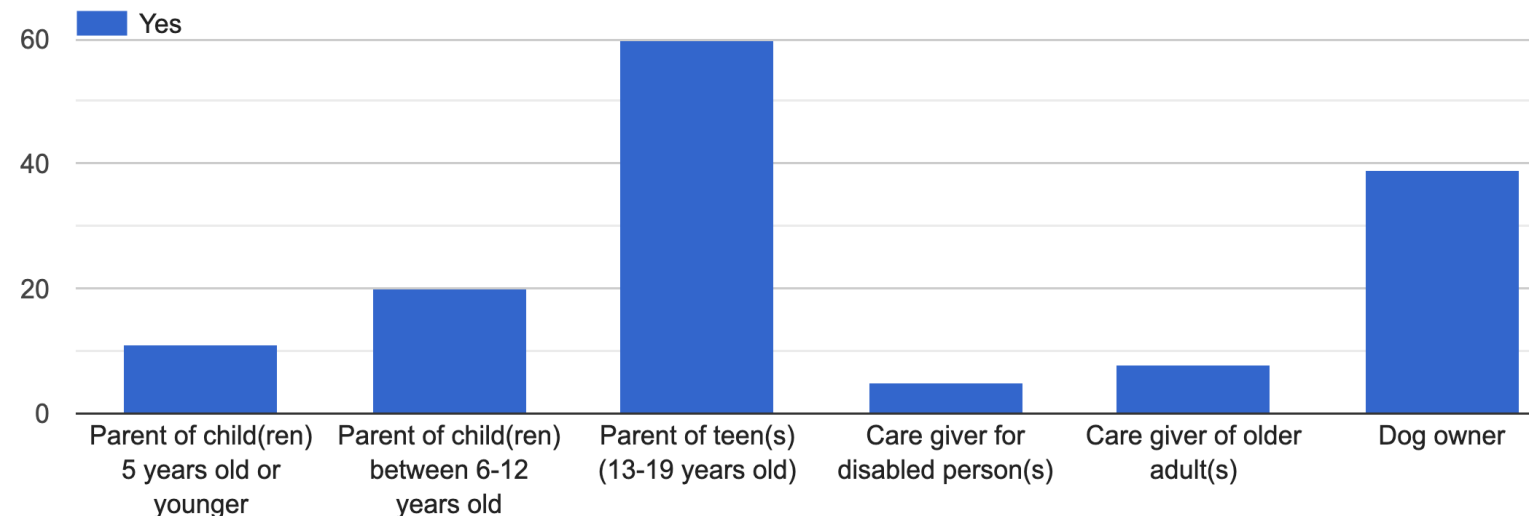
- 124 responses
- Nearly a quarter were youth
- Over half were parents of teens
- Majority (70%) identified as African American



11/14 COMMUNITY MEETING

Attendees representing:

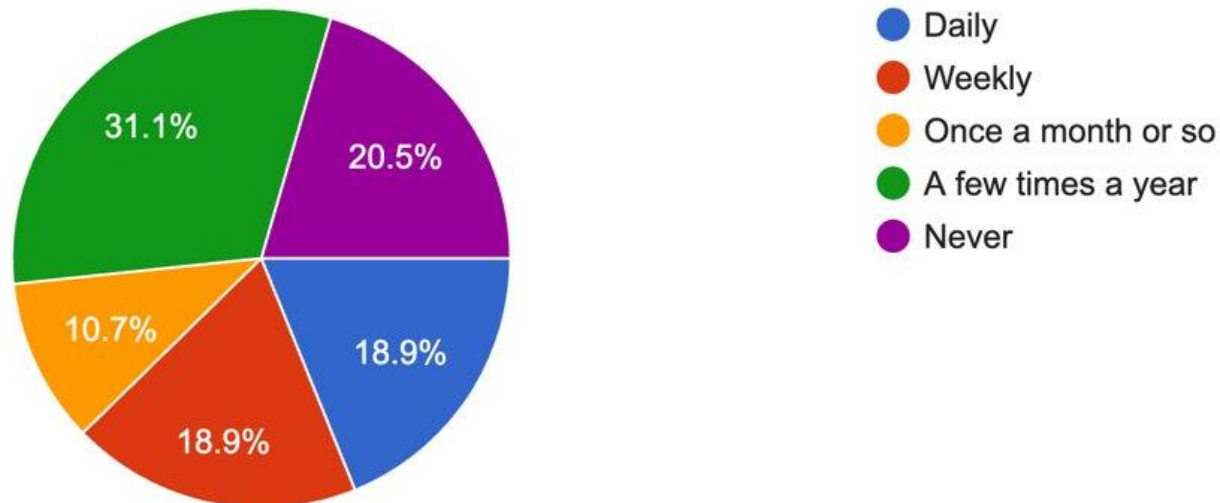
- Cass Tech PTSA
- the Triangle Society
- Olympia Development
- Robert Burns Club
- the Masonic Temple
- the Planning Department
- Chinatown Vision Committee
- Neighborhood residents



WHAT WE HEARD: Survey Results

Park Use:

- Most people **walk (47%)** or **drive (41%)** to the park, only 5% reported biking.
- The main concerns are:
 - #1) **The park does not offer what people want (56%)**
 - #2) **Safety issues (52%)**
- Mix of how often people use the park:



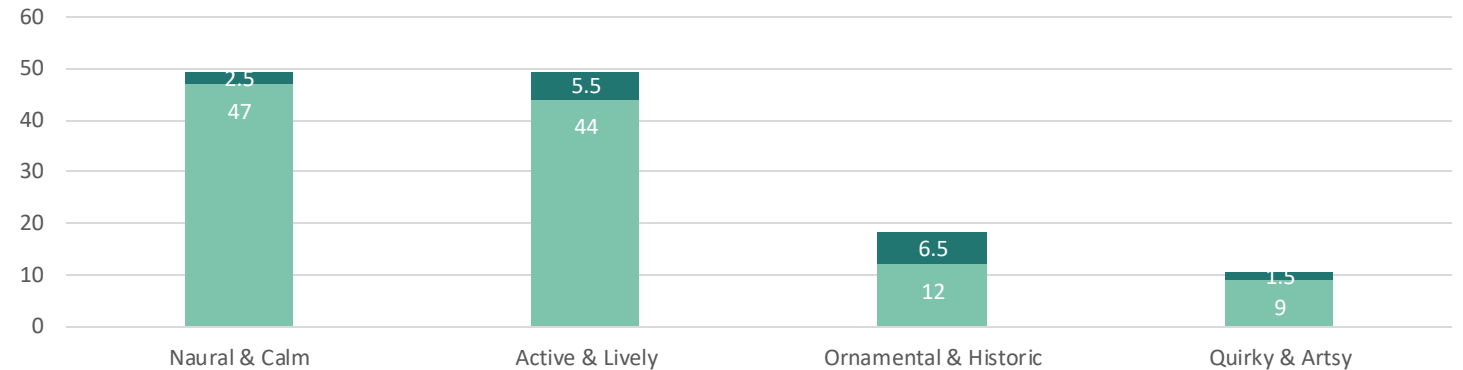
WHAT WE HEARD: All Results

Park Atmosphere:

ATMOSPHERE	Survey	Stakeholders	TOTAL
Natural & Calm	47	2.5	39%
Active & Lively	44	5.5	39%
Ornamental & Historic	12	6.5	14%
Quirky & Artsy	9	1.5	8%

- Evenly split between natural and active
- Stakeholders were more supportive of ornamental/historic
- + 11 write-ins of folks wanting a combination of atmospheres

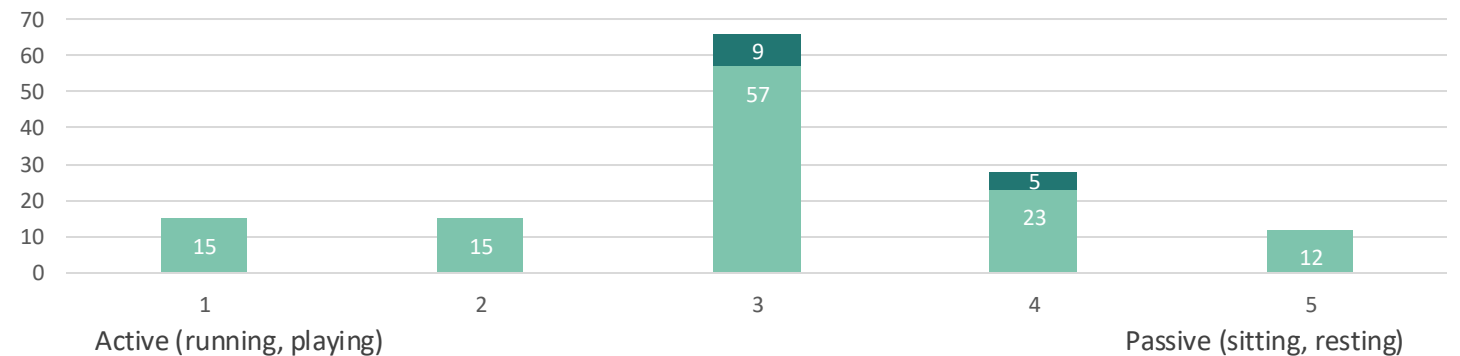
Park Atmosphere



Passive vs Active:

ACTIVE VS PASSIVE	Survey	Stakeholders	TOTAL
1	15		11%
2	15		11%
3	57	9	49%
4	23	5	21%
5	12		9%

Active vs Passive



- Most respondents want a mix of passive and active spaces in the park

WHAT WE HEARD: Community Meeting Summary

What do you like best:

- Trees/shade
- Resting spot
- Historic
- Walkable
- Location (x2)
- Greenspace
- Burns statue

One thing you would change:

- Lighting (x4)
- Trash
- Seating / communal spaces
- Study tables / education area
- Games area
- Tech chargers
- Walkways

Other notes:

- Trash concerns
- Pathway issues
- Add a water feature
- Provide seating
- Historical signage
- Infrastructure to support family-friendly events (farmers market, art fair, festivals, yoga)
- Vendor stage with electric
- Shelter/gazebo
- Education area
- Games area
- Consider solar
- Waiting/hangout area for students
- Open space for student activities (sports, arts, etc.)
- Burns Statue
 - Add interpretive sign
 - Protect it from traffic
 - Holes in base (old light sockets)

WHAT WE HEARD: Survey Results

What would you like to do in Cass Park:

- #1) **Socializing** (76%)
- #2) **Relaxing in nature** (75%)
- #3) **Exercising** (59%)
- #4) **Walking or biking** (58%)
- #5) Playing with kids (40%)
- #6) Cultural programming (39%)
- #7) View art installations (38%)
- #8) Event space (27%)

What are your top priorities for Cass Park?

- #1) **Add gardens/landscaping** (60%)
- #2) **Add lighting** (55%)
- #3) **Fix walkways** (52%)
- #4) **Replace old seating** (46%)
- #5) Create a hangout area (35%)
- #6) Install/repair art (31%)
- #7) Reimagine the historic fountain (31%)
- #8) Create a space for events (21%)
- #9) Add shade/shelters (20%)
- #10) Install educational signs (15%)

WHAT WE HEARD: Community Meeting Results



CASS PARK - EXISTING CONDITIONS



What we know:

- Deteriorated walks
- Scarce amenities
- Dense trees
- Sculptural features ★



CASS PARK – EXISTING FEATURES



ROBERT BURNS STATUE



JAMES LAWTON
"PINK LANDSCAPE – THREE TRUSSES PLUS"



CASS PARK SIGN AND FLAG POLES

CASS PARK – ARBORIST TREE SURVEY



○ Tree, Poor Condition (-59)

○ Tree, Fair Condition (46)

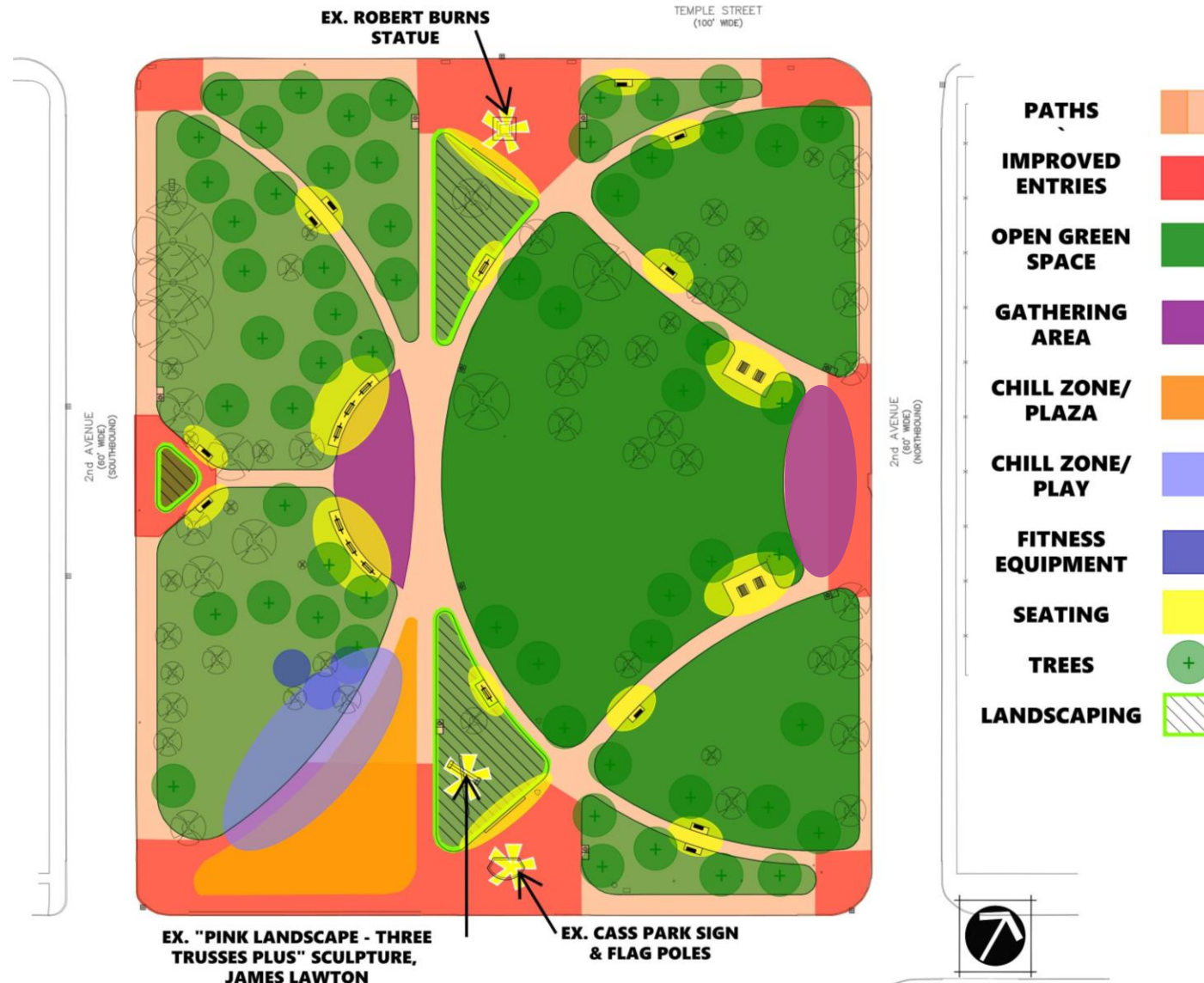
○ Tree, Good Condition (16)

Note: 60 trees remaining + 60 newer trees = 120 trees

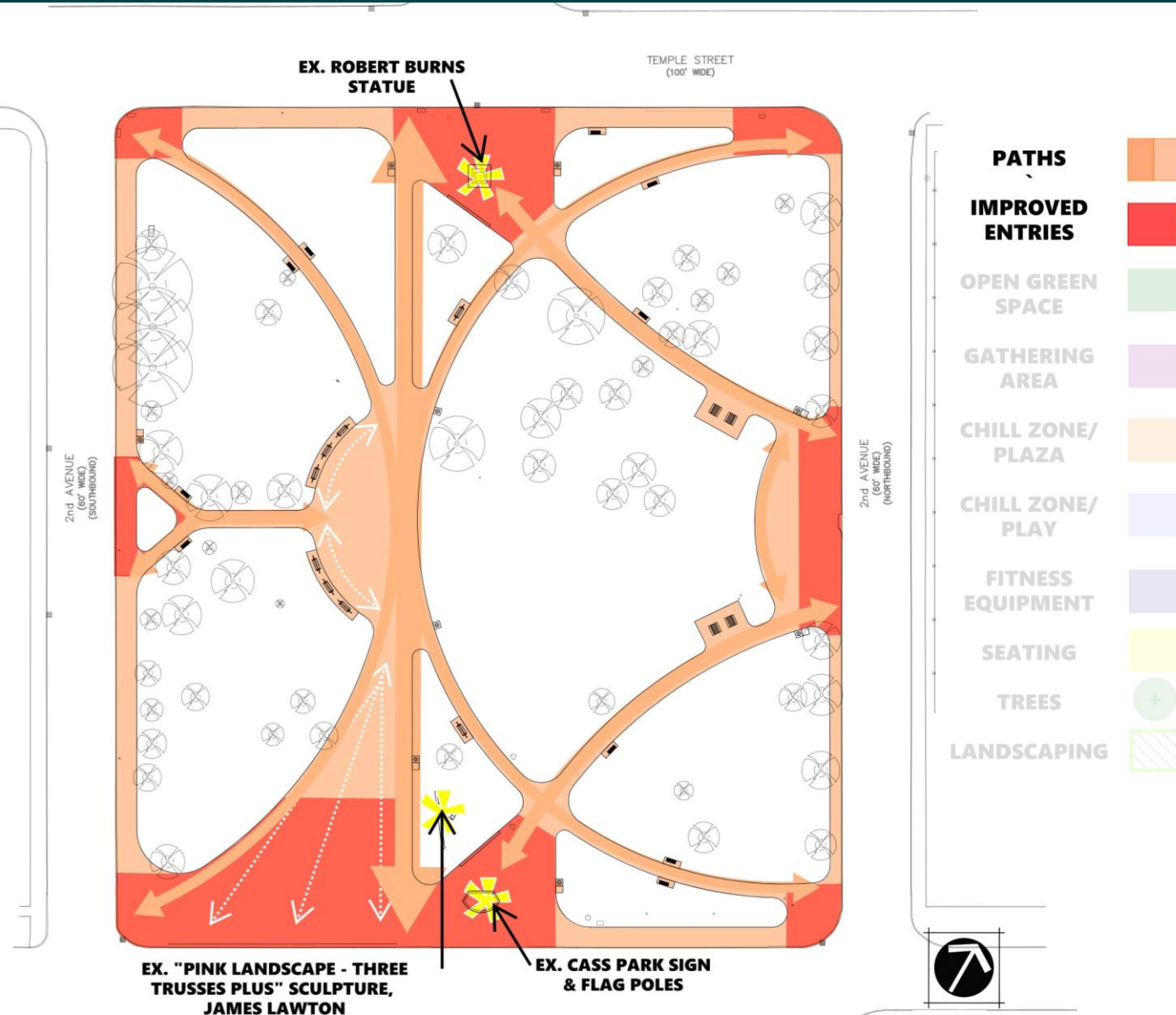


INVASIVE TREE: BRADFORD PEAR

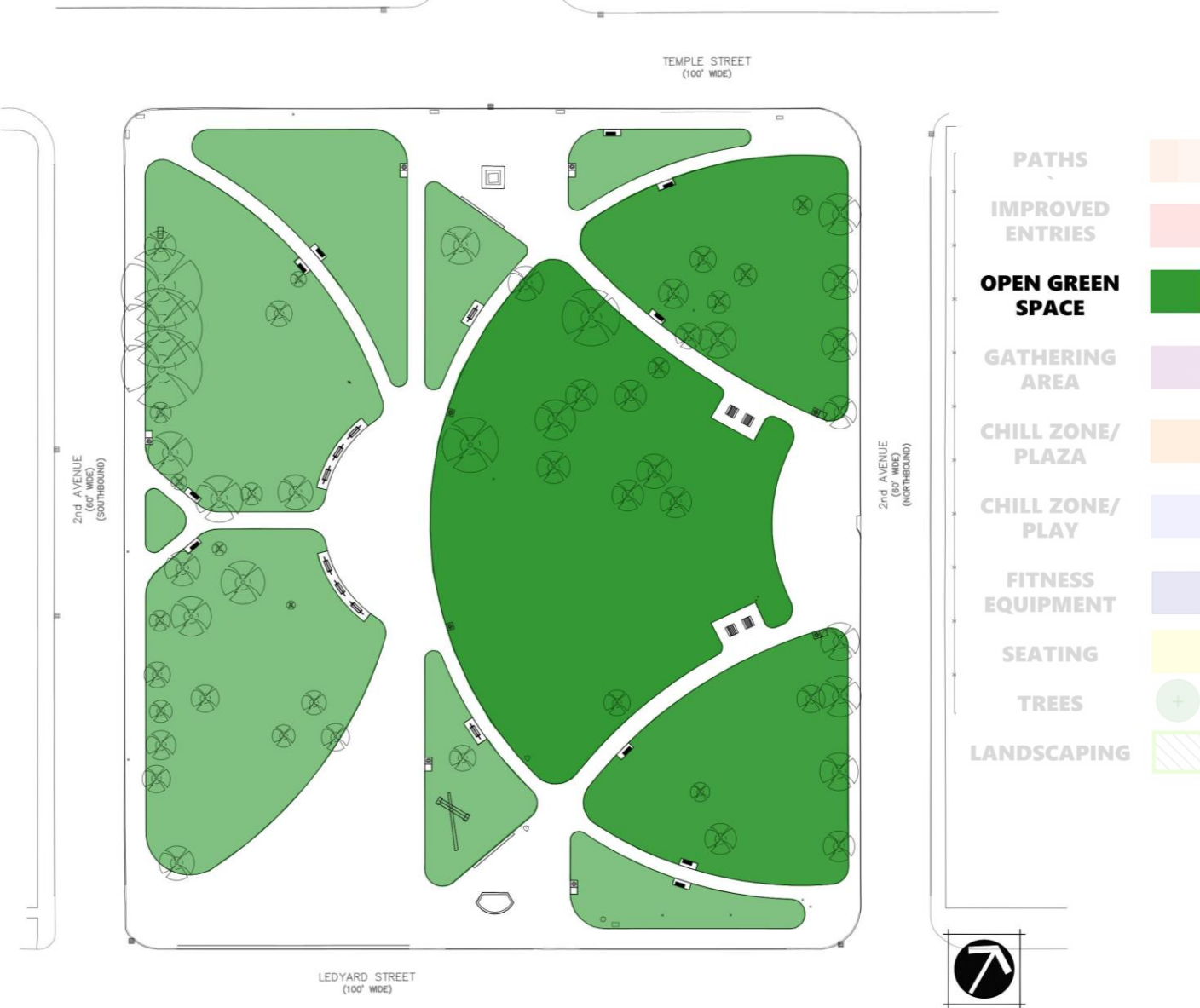
CASS PARK CONCEPT



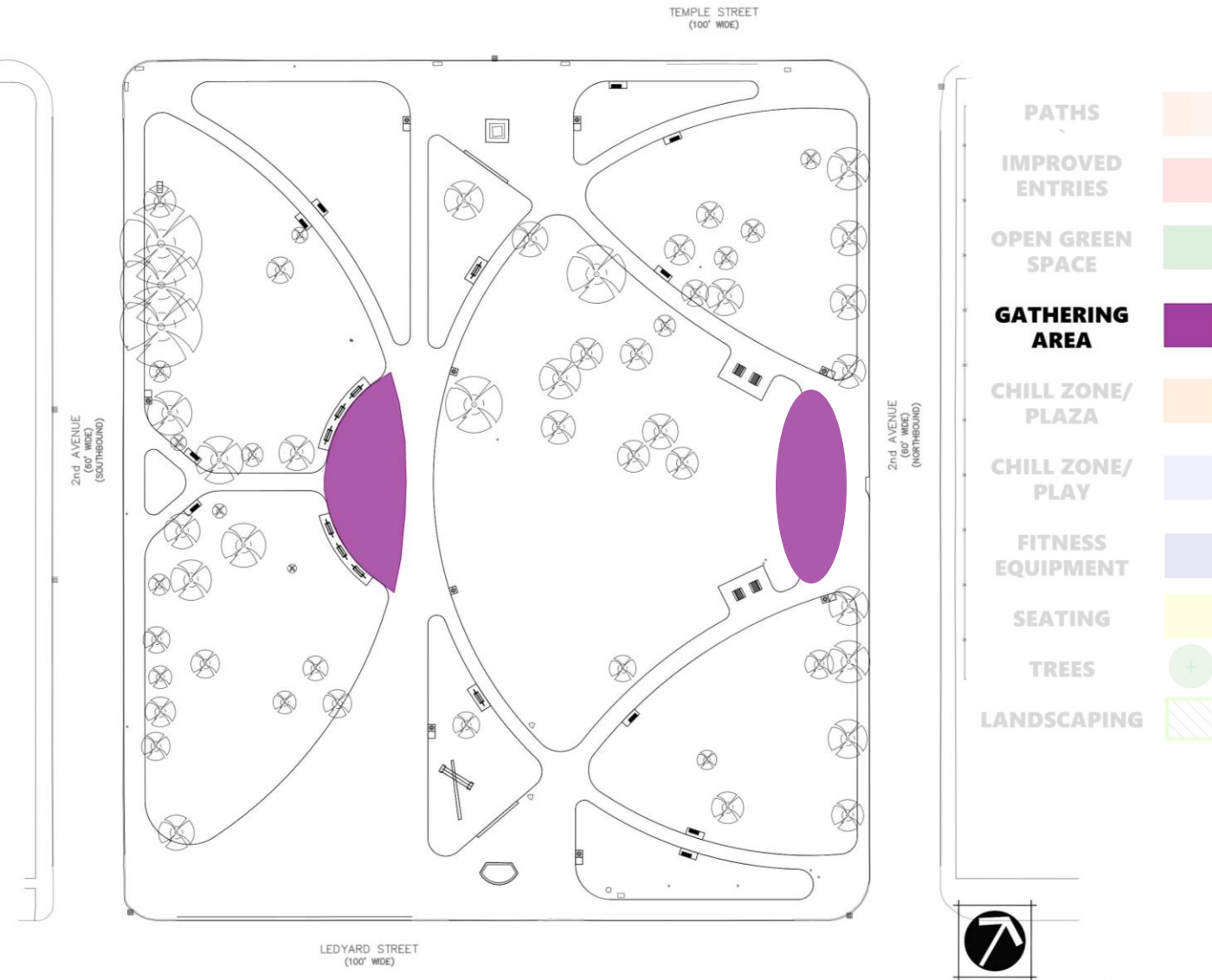
PATHS & ENTRIES



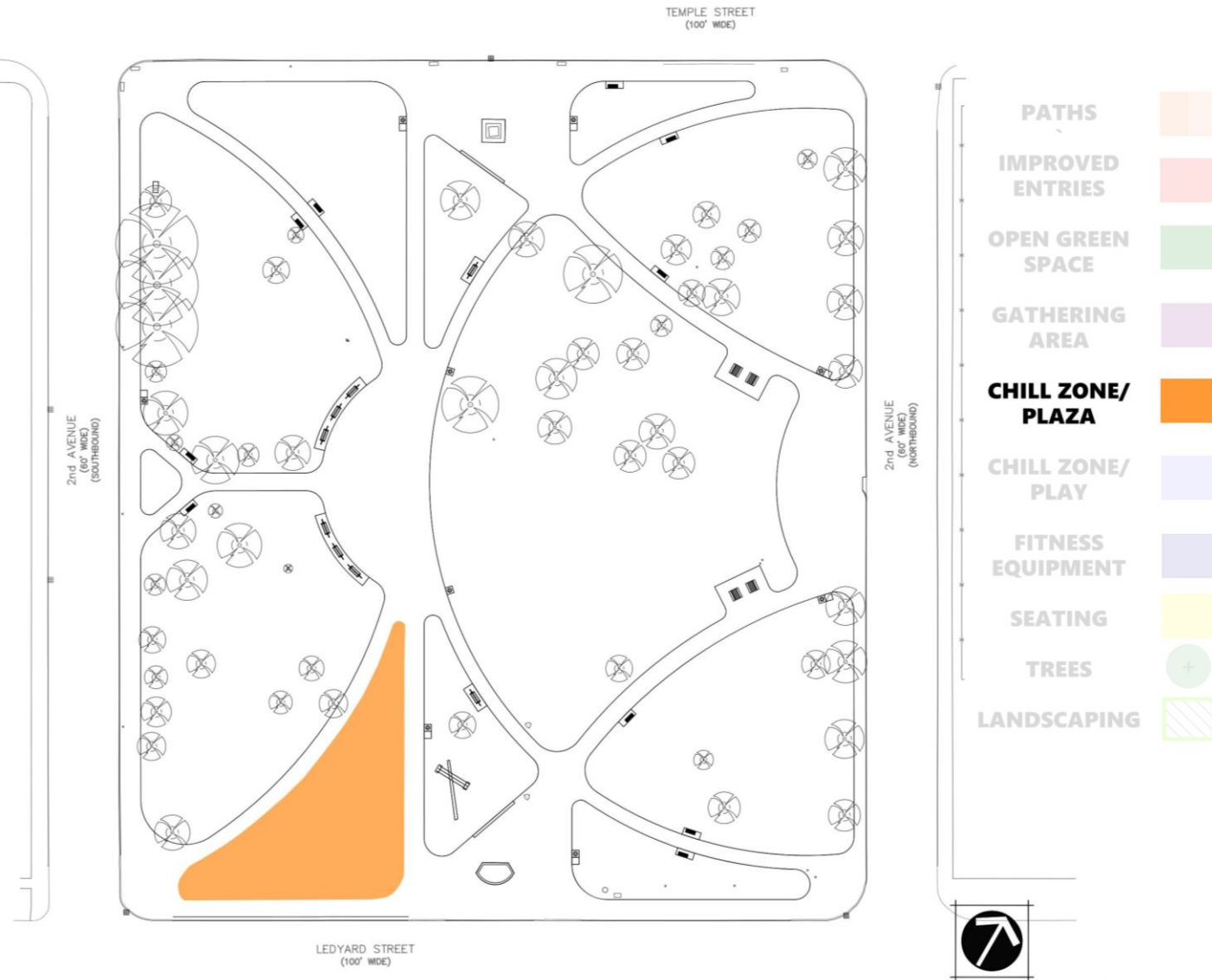
OPEN GREEN SPACE



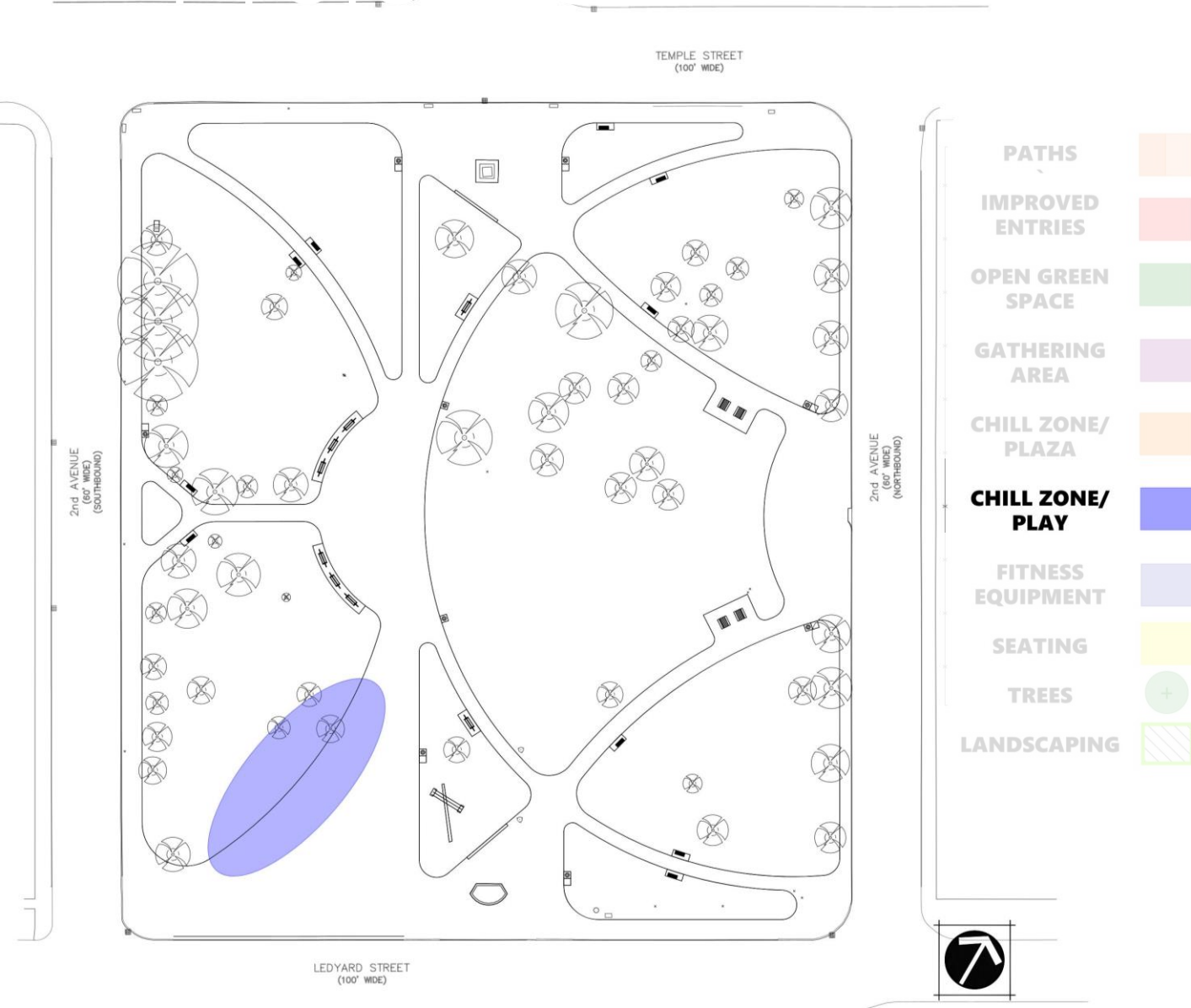
GATHERING AREA



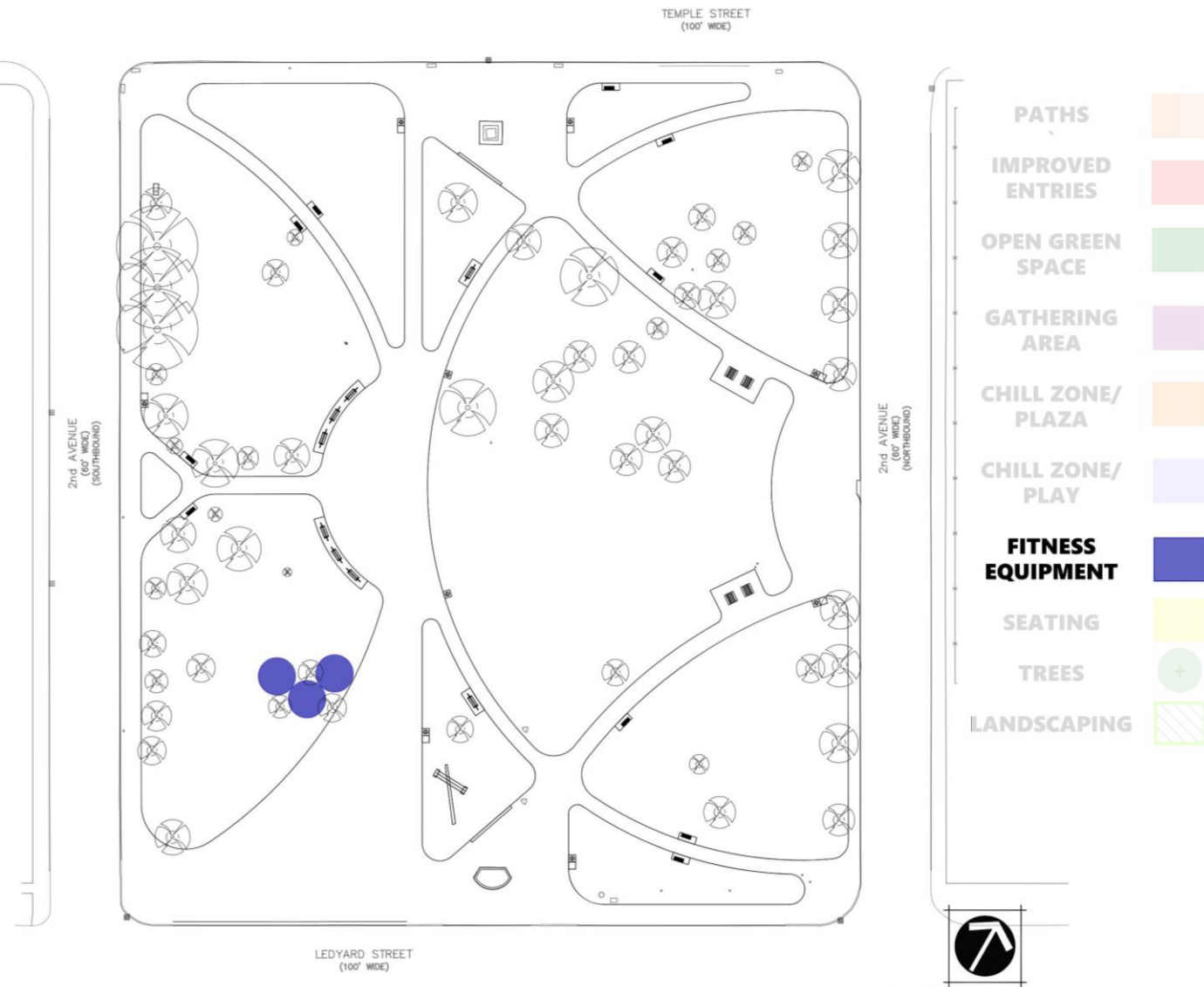
CHILL ZONE/PLAZA



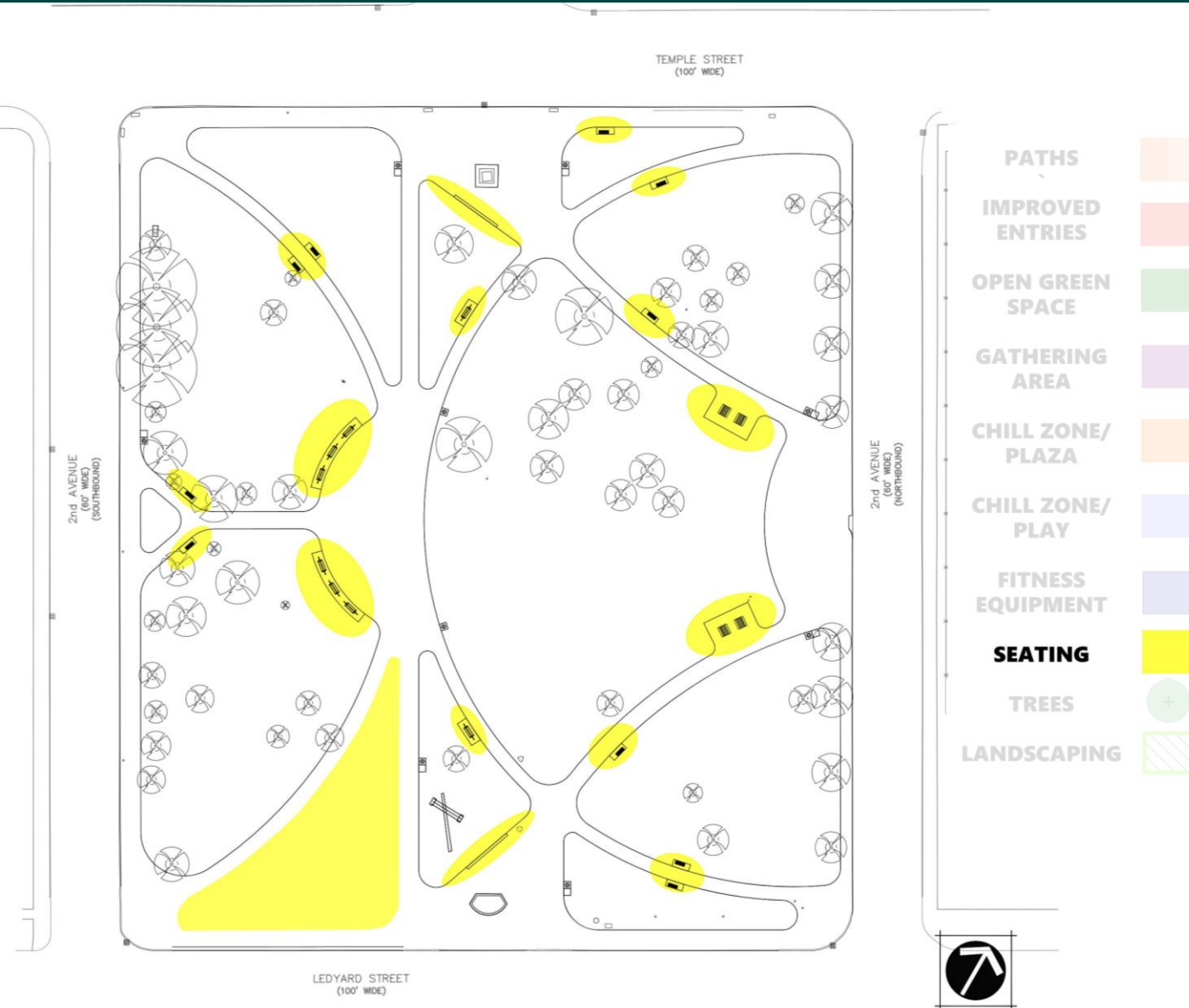
CHILL ZONE & PLAY



FITNESS EQUIPMENT



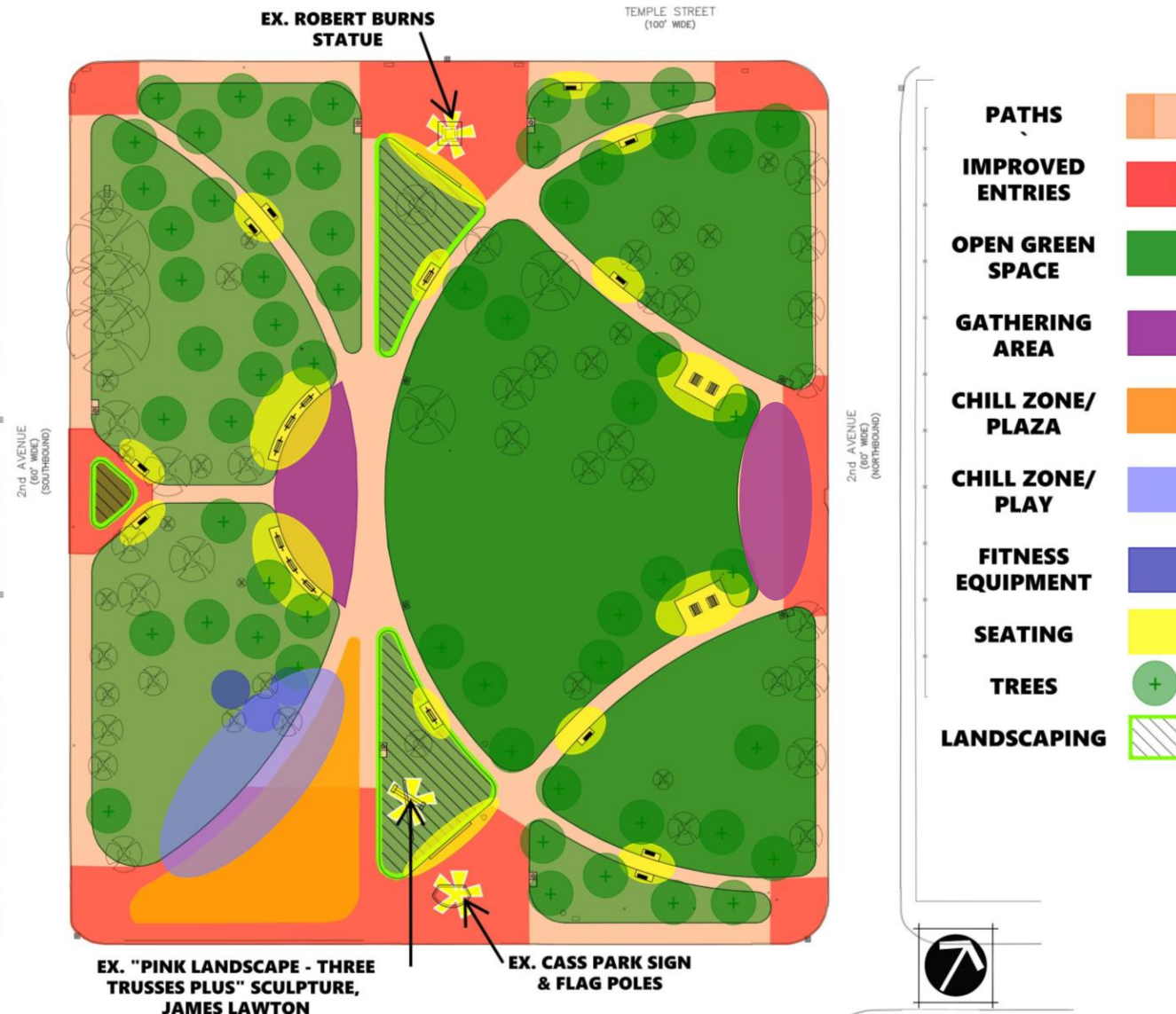
SEATING



TREES & LANDSCAPING



CASS PARK CONCEPT



Group #3 Notes:

additional solar panels/charging stations

Small amphitheater

Older kids wait near temple st

Bike rentals (existing? Removed? Can we add back?)

Like the openness

Opportunities for walking/running; using R.O.W

Lighting needed; south side

Coordinating construction and traffic; plan and

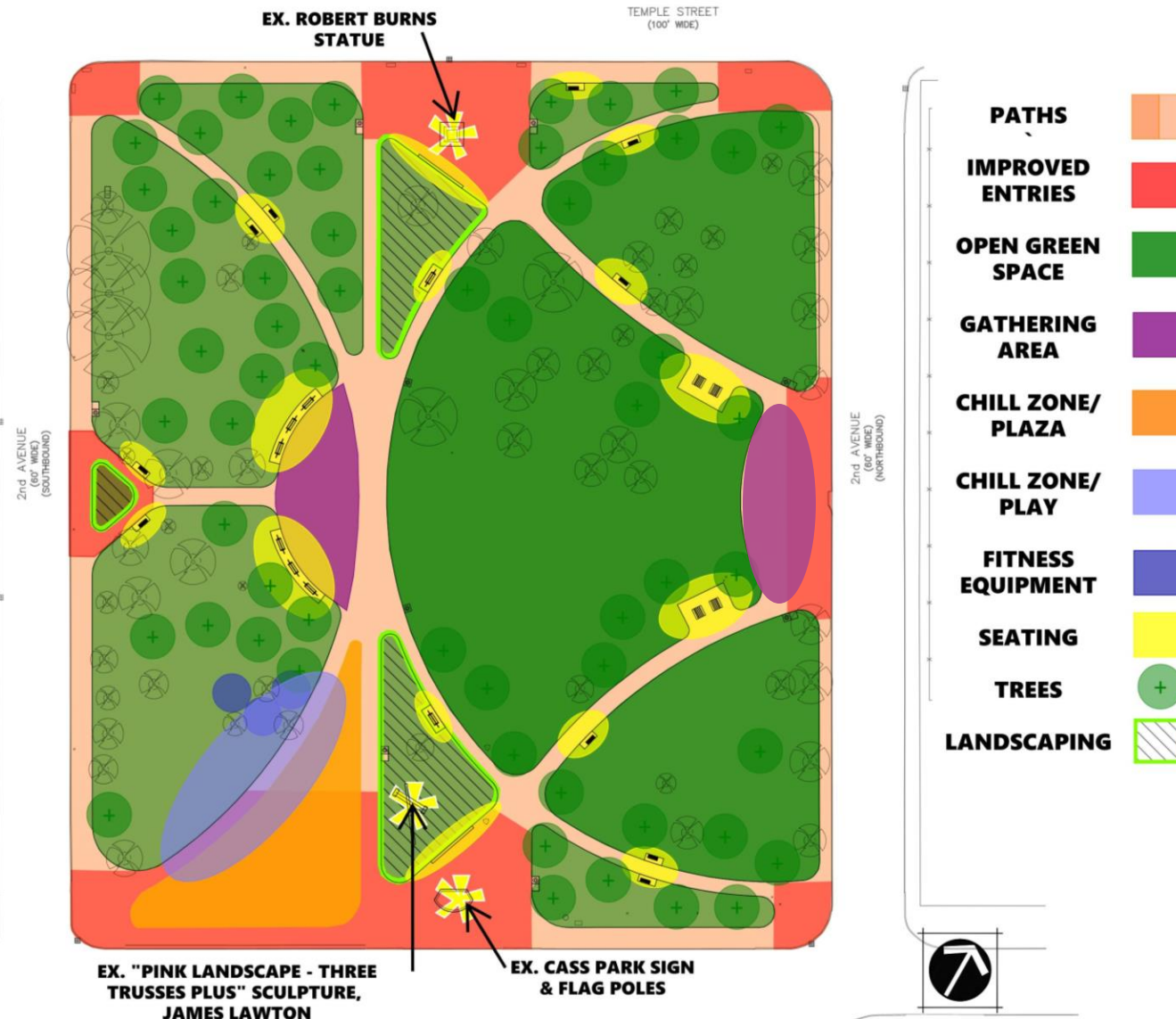
signage

Summer school events (basketball clinics/practice)

CASS PARK CONCEPT

Group #2 Notes:

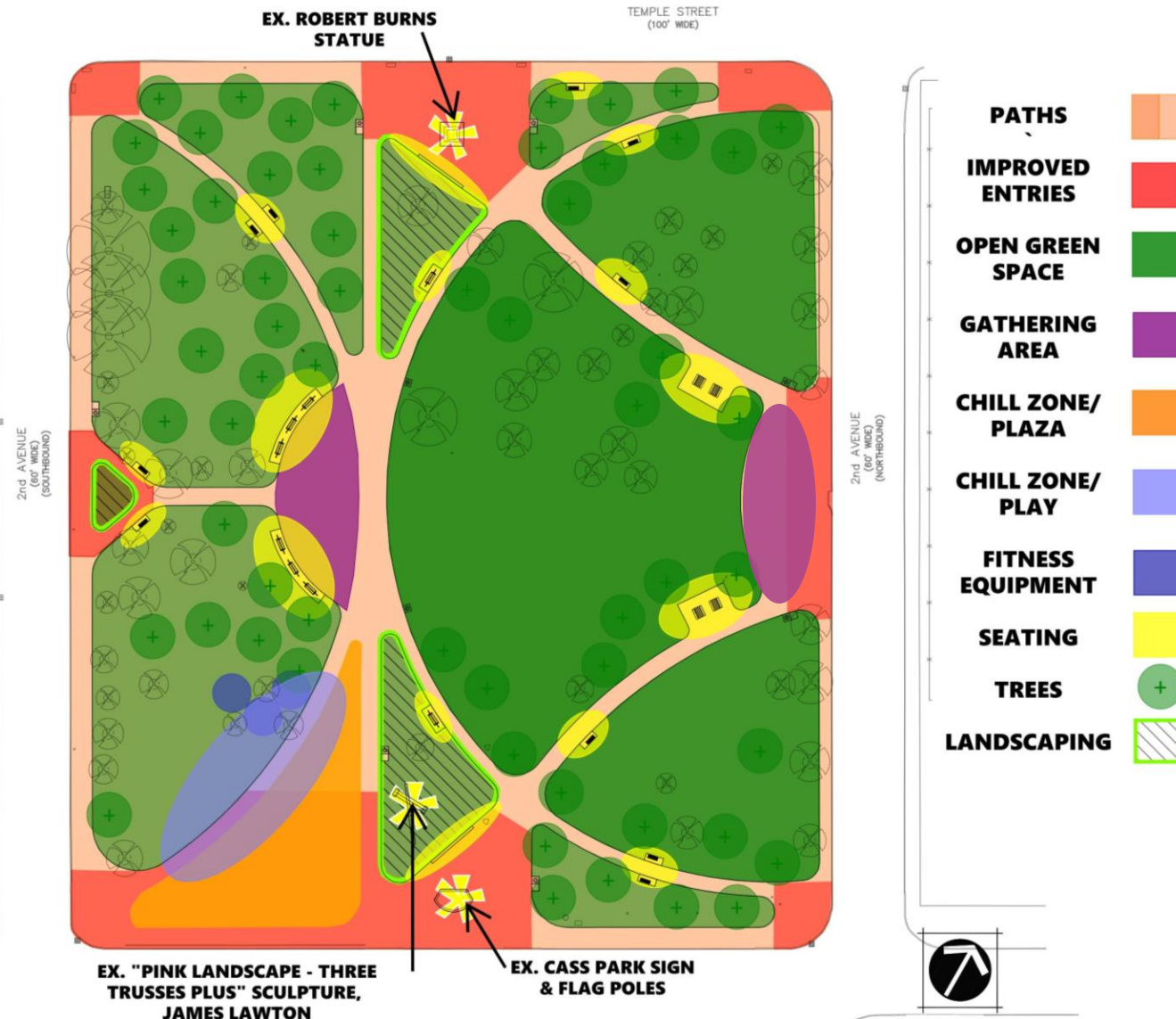
Happy with layout, questions about entrances
 Charging stations, wifi in the park?
 Trash cans (yes!)
 Possible outdoor classroom, covered space for that
 Space for food trucks (gets over 100 kids daily),
 room for more
 Fitness equipment
 Tailgating happens in the park, can we design to
 keep it more orderly/clean?
 Like the open space
 Do not want the bike rentals in the park, takes up
 too much space and can cause issues for residents
 around the park



CASS PARK CONCEPT

Group#1 Notes:

- Overall likes the design, a few questions:
 - Seating areas, will there be outlets?
 - Little library?
- Also liked the design, question about the lighting design, location and style of lighting? (will use standard PLA historic light posts, light standard will be like Roosevelt)
- Sidewalk all the way around the park, what will the materials be within the park?
- Appreciate green space being kept
- Important green space for migrating birds, keep top of mind (lights that are bird-friendly)
- Happy Bradford Pears are coming out, want native trees and shrubs
- Porta potties temporary (yes, for parade)
- Topography? (small mounds, mostly flat)



NEXT STEPS

PARK IMPROVEMENTS AT CASS PARK



THANK YOU!

Stay up to date on the project!

↳ detroitmi.gov/CassPark

Contact us:

Theresa McArleton
Chief Parks Planner
theresa.mcarleton@detroitmi.gov

Juliana Fulton
Deputy Chief Parks Planner
fultonj@detroitmi.gov

