

Instructions:

Abstraction

Gather improved sales data
Identify and exclude outliers
Finalize results

Allocation

Calculate ratio from abstraction method
Convert ratio calculation to rate/sq.ft.
Apply rate in BSA

Abstraction Data

Parcel Number	Street Address	Sale Date	Sale Price	Instr.	Terms of Sale	Adj. Sale \$	Cur. Appraisal	Land + Yard	Bldg. Residual	Cost Man. \$	Est Land Value	LV/sq.ft.	Land/Bldg Ratio	Floor Area	\$/Sq.Ft.	ECF Area	Net Acreage	Land Sq.Ft.	Actual Front	Ave. Depth	Building Style	Use Code	Other Parcels in Sale	Building Deprec.
22124207	20519 GRANDVIEW	05/02/22	\$106,400	WD	03-ARM'S LENGTH	\$106,400	\$55,305	\$1,598	\$104,902	\$101,911	\$4,489	0.75	4.22%	908	\$115.42	1R101	0.137	5,968	45	132	SINGLE FAMILY	SINGLE FAMILY		67
22124395	20541 SALEM	08/31/22	\$121,000	WD	03-ARM'S LENGTH	\$121,000	\$60,436	\$1,599	\$119,401	\$111,645	\$9,355	1.57	7.73%	1,093	\$109.24	1R101	0.137	5,968	45	133	SINGLE FAMILY	SINGLE FAMILY		67
22124212.002L	20421 GRANDVIEW	04/29/22	\$101,000	PTA	03-ARM'S LENGTH	\$101,000	\$50,419	\$1,530	\$99,470	\$92,769	\$8,232	1.38	8.15%	908	\$109.55	1R101	0.137	5,968	45	132	SINGLE FAMILY	SINGLE FAMILY		67
			\$328,400								\$22,076	1.23	6.72%					17,903						
22017606.01	24780 FRISBEE	10/14/22	\$100,000	WD	03-ARM'S LENGTH	\$100,000	\$37,492	\$1,401	\$98,599	\$90,454	\$9,546	0.96	9.55%	1,203	\$81.96	1R102	0.229	9,975	89	112	SINGLE FAMILY	SINGLE FAMILY		52
22119372.032L	22761 CAMBRIDGE	09/20/22	\$165,000	PTA	03-ARM'S LENGTH	\$165,000	\$114,438	\$3,137	\$161,863	\$156,322	\$8,678	0.61	5.26%	1,555	\$104.09	1R103	0.327	14,244	34	419	SINGLE FAMILY	SINGLE FAMILY		67
22113606	19941 LAHSER	09/18/23	\$105,000	PTA	03-ARM'S LENGTH	\$105,000	\$70,342	\$1,846	\$103,154	\$96,202	\$8,798	1.60	8.38%	1,878	\$54.93	1R103	0.126	5,489	50	110	DUPLEX	DUPLEX		36
22018507	23112 NORFOLK	06/06/23	\$150,000	WD	03-ARM'S LENGTH	\$150,000	\$98,676	\$2,248	\$147,752	\$135,433	\$14,567	1.83	9.71%	1,205	\$122.62	1R103	0.183	7,971	60	133	SINGLE FAMILY	SINGLE FAMILY		67
22118498.01	19501 BEAVERLAND	01/27/23	\$145,500	WD	03-ARM'S LENGTH	\$145,500	\$95,183	\$2,148	\$143,352	\$130,667	\$14,833	2.01	10.19%	1,096	\$130.80	1R103	0.169	7,362	50	147	SINGLE FAMILY	SINGLE FAMILY		67
22018421	22597 LEEWIN	12/14/22	\$135,000	WD	03-ARM'S LENGTH	\$135,000	\$85,414	\$2,054	\$132,946	\$117,079	\$17,921	2.71	13.28%	947	\$140.39	1R103	0.152	6,621	50	133	SINGLE FAMILY	SINGLE FAMILY		67
			\$700,500								\$64,798	1.55	9.25%					41,687						
22104237.02	20565 PATTON	09/09/22	\$140,000	WD	03-ARM'S LENGTH	\$140,000	\$101,132	\$2,165	\$137,835	\$134,102	\$5,898	0.83	4.21%	1,164	\$118.41	1R104	0.164	7,144	54	132	SINGLE FAMILY	SINGLE FAMILY		67
22105488.02	20559 BRAILE	09/23/22	\$170,000	WD	03-ARM'S LENGTH	\$170,000	\$122,184	\$2,007	\$167,993	\$162,841	\$7,159	1.17	4.21%	1,324	\$126.88	1R104	0.140	6,098	46	133	SINGLE FAMILY	SINGLE FAMILY		67
22099419	20285 HEYDEN	05/10/22	\$142,000	WD	03-ARM'S LENGTH	\$142,000	\$100,342	\$2,493	\$139,507	\$132,587	\$9,413	1.59	6.63%	1,163	\$119.95	1R104	0.136	5,924	44	135	SINGLE FAMILY	SINGLE FAMILY		67
22098044.02	19959 VAUGHAN	10/11/22	\$120,000	WD	03-ARM'S LENGTH	\$120,000	\$83,595	\$2,507	\$117,493	\$109,875	\$10,125	1.59	8.44%	986	\$119.16	1R104	0.146	6,360	47	135	SINGLE FAMILY	SINGLE FAMILY		67
22112836	19939 GREYDALE	09/15/23	\$125,000	WD	03-ARM'S LENGTH	\$125,000	\$86,266	\$1,838	\$123,162	\$114,401	\$10,599	1.95	8.48%	1,146	\$107.47	1R104	0.125	5,445	40	137	SINGLE FAMILY	SINGLE FAMILY		67
22097996	19916 VAUGHAN	08/17/22	\$122,000	WD	03-ARM'S LENGTH	\$122,000	\$82,683	\$1,905	\$120,095	\$109,455	\$12,545	2.17	10.28%	933	\$128.72	1R104	0.133	5,793	47	123	SINGLE FAMILY	SINGLE FAMILY		67
22109968	20001 WESTBROOK	06/30/23	\$132,000	WD	03-ARM'S LENGTH	\$132,000	\$90,531	\$1,186	\$130,814	\$121,064	\$10,936	2.18	8.29%	1,075	\$121.69	1R104	0.115	5,009	36	139	SINGLE FAMILY	SINGLE FAMILY		67
22104249	20031 PATTON	06/14/22	\$116,000	WD	03-ARM'S LENGTH	\$116,000	\$78,715	\$1,813	\$114,187	\$104,203	\$11,797	2.22	10.17%	1,081	\$105.63	1R104	0.122	5,314	40	133	SINGLE FAMILY	SINGLE FAMILY		67
			\$1,067,000								\$78,472	1.67	7.35%					47,088						
22088584.01	19447 GRANDVILLE	06/30/23	\$130,000	PTA	03-ARM'S LENGTH	\$130,000	\$71,227	\$1,634	\$128,366	\$122,093	\$7,907	1.40	6.08%	868	\$147.89	1R105	0.130	5,663	42	135	SINGLE FAMILY	SINGLE FAMILY		67
22075334	20527 ASHTON	06/14/23	\$106,000	WD	03-ARM'S LENGTH	\$106,000	\$56,072	\$887	\$105,113	\$96,816	\$9,184	1.77	8.66%	973	\$108.03	1R105	0.119	5,184	40	130	SINGLE FAMILY	SINGLE FAMILY		52
			\$236,000								\$17,091	1.58	7.24%					10,846						
22122257.05	19303 DALE	08/24/23	\$135,900	WD	03-ARM'S LENGTH	\$135,900	\$72,429	\$1,387	\$134,513	\$130,832	\$5,068	0.96	3.73%	908	\$148.14	1R106	0.121	5,271	46	115	SINGLE FAMILY	SINGLE FAMILY		67
22015021	22110 CURTIS	09/30/22	\$134,000	WD	03-ARM'S LENGTH	\$134,000	\$75,892	\$1,557	\$132,443	\$128,607	\$5,393	0.92	4.02%	1,118	\$118.46	1R107	0.134	5,837	45	130	SINGLE FAMILY	SINGLE FAMILY		67
22115718	17814 NORTHROP	09/05/23	\$180,000	WD	03-ARM'S LENGTH	\$180,000	\$86,382	\$1,105	\$178,895	\$147,538	\$32,462	4.87	18.03%	1,727	\$103.59	1R107	0.153	6,665	44	152	SINGLE FAMILY	SINGLE FAMILY		52
			\$314,000								\$37,855	3.03	12.06%					12,502						
22108581.002L	17246 TRINITY	05/03/23	\$155,000	PTA	03-ARM'S LENGTH	\$155,000	\$72,289	\$3,075	\$151,925	\$128,890	\$26,110	1.32	16.85%	1,180	\$128.75	1R108	0.455	19,820	66	300	SINGLE FAMILY	SINGLE FAMILY		67
22100331	17650 KENTFIELD	05/08/23	\$78,000	WD	03-ARM'S LENGTH	\$78,000	\$37,782	\$1,888	\$76,112	\$66,842	\$11,158	1.36	14.31%	734	\$103.69	1R108	0.188	8,189	60	136	SINGLE FAMILY	SINGLE FAMILY		52
			\$233,000								\$37,268	1.33	15.99%					28,009						
22094053-4	17646 PLAINVIEW	10/06/22	\$134,000	WD	03-ARM'S LENGTH	\$134,000	\$93,265	\$2,889	\$131,111	\$131,552	\$2,448	0.36	1.83%	1,118	\$117.27	1R109	0.154	6,708	60	112	SINGLE FAMILY	SINGLE FAMILY		67
22087363	18340 SHAFTSBURY	05/02/23	\$110,000	WD	03-ARM'S LENGTH	\$110,000	\$75,833	\$1,774	\$108,226	\$107,801	\$2,199	0.42	2.00%	891	\$121.47	1R109	0.120	5,227	40	130	SINGLE FAMILY	SINGLE FAMILY		67
22093126	17550 WESTMORELAND	08/26/22	\$120,000	WD	03-ARM'S LENGTH	\$120,000	\$80,720	\$1,578	\$118,422	\$115,199	\$4,801	1.05	4.00%	1,008	\$117.48	1R109	0.105	4,574	40	114	SINGLE FAMILY	SINGLE FAMILY		67
22081744	17699 AVON	05/23/23	\$150,000	WD	03-ARM'S LENGTH	\$150,000	\$101,111	\$1,653	\$148,347	\$144,771	\$5,222	1.12	3.49%	1,156	\$128.33	1R109	0.107	4,661	40	116	SINGLE FAMILY	SINGLE FAMILY		67
22015118	19026 CURTIS	03/10/23	\$148,000	WD	03-ARM'S LENGTH	\$148,000	\$99,371	\$2,591	\$145,409	\$140,873	\$7,127	1.17	4.82%	1,126	\$129.14	1R109	0.140	6,098	53	115	SINGLE FAMILY	SINGLE FAMILY		67
22080217	18669 GREENVIEW	06/16/23	\$74,500	WD	03-ARM'S LENGTH	\$74,500	\$49,237	\$2,943	\$71,557	\$67,386	\$7,114	1.31	9.55%	937	\$76.37	1R109	0.125	5,445	45	121	SINGLE FAMILY	SINGLE FAMILY		52
22094035	17400 PLAINVIEW	06/29/22	\$160,000	WD	03-ARM'S LENGTH	\$160,000	\$104,164	\$2,054	\$157,946	\$148,632	\$11,368	1.69	7.11%	1,466	\$107.74	1R109	0.154	6,708	60	112	SINGLE FAMILY	SINGLE FAMILY		67
22125106	8435 W OUTER	08/22/22	\$176,800	WD	03-ARM'S LENGTH	\$176,800	\$117,615	\$1,653	\$175,147	\$168,795	\$8,005	1.72	4.53%	1,506	\$116.30	1R109	0.107	4,661	40	116	SINGLE FAMILY	SINGLE FAMILY		67
22125089	8595 W OUTER	06/28/22	\$185,000	WD	03-ARM'S LENGTH	\$185,000	\$122,359	\$2,497	\$182,503	\$174,472	\$10,528	1.67	5.69%	1,280	\$144.84	1R109	0.129	5,619	45	125	SINGLE FAMILY	SINGLE FAMILY		67
22080053-4	18650 GREENVIEW	11/18/22	\$90,000	WD	03-ARM'S LENGTH	\$90,000	\$54,931	\$1,915	\$88,085	\$77,170	\$12,830	2.15	14.26%	944	\$93.31	1R109	0.137	5,968	44	136	SINGLE FAMILY	SINGLE FAMILY		52
22091054	19025 EDINBOROUGH	05/10/22	\$105,320	WD	03-ARM'S LENGTH	\$105,320	\$67,251	\$1,589	\$103,731	\$95,578	\$9,742	2.17	9.25%	955	\$108.62	1R109	0.103	4,487	40	112	SINGLE FAMILY	SINGLE FAMILY		52
22080236	18401 GREENVIEW	08/19/22	\$67,000	WD	03-ARM'S LENGTH	\$67,000	\$39,153	\$977	\$66,023	\$55,569	\$11,431	2.45	17.06%	689	\$95.82	1R109	0.107	4,661	40	117	SINGLE FAMILY	SINGLE FAMILY		52
22087307	17194 SHAFTSBURY	12/27/22	\$123,000	WD	03-ARM'S LENGTH	\$123,000	\$78,189	\$1,610	\$121,390	\$111,469	\$11,531	2.47	9.38%	920	\$131.95	1R109	0.107	4,661	35	133	SINGLE FAMILY	SINGLE FAMILY		67
22087345	17694 SHAFTSBURY	06/14/22	\$131,000	WD	03-ARM'S LENGTH	\$131,000	\$79,825	\$2,103	\$128,897	\$113,132	\$17,968	2.56	13.64%	1,058	\$121.83	1R109	0.160	6,970	53	133	SINGLE FAMILY	SINGLE FAMILY		67
22075509	17135 ASHTON	05/09/23	\$139,000	WD	03-ARM'S LENGTH	\$139,000	\$86,739	\$1,945	\$137,055	\$123,426	\$15,574	2.65	11.20%	1,114	\$123.03	1R109	0.135	5,881	43	139	SINGLE FAMILY	SINGLE FAMILY		67
22085011	17679 SUNDERLAND	05/26/23	\$147,000	WD	03-ARM'S LENGTH	\$147,000	\$93,111	\$1,673	\$145,327	\$133,098	\$13,902	2.88	9.46%	1,439										

22109307	16545 BLACKSTONE	08/11/23	\$155,000	PTA	03-ARM'S LENGTH	\$155,000	\$68,334	\$3,415	\$151,585	\$135,814	\$19,186	\$	3.17	12.38%	1,660	\$91.32	1R114	0.139	6,055	50	121	SINGLE FAMILY	SINGLE FAMILY	52
22099640	16121 HEYDEN	12/21/23	\$145,000	PTA	03-ARM'S LENGTH	\$145,000	\$63,809	\$3,162	\$141,838	\$126,877	\$18,123	\$	4.25	12.50%	1,215	\$116.74	1R114	0.098	4,269	40	106	SINGLE FAMILY	SINGLE FAMILY	67
						\$300,000					\$37,310	\$	3.61	12.44%					10,324					
22104045-6	16906 PATTON	04/18/22	\$198,000	WD	03-ARM'S LENGTH	\$198,000	\$102,566	\$1,811	\$196,189	\$195,641	\$2,359	\$	0.46	1.19%	1,419	\$138.26	1R115	0.119	5,184	45	115	SINGLE FAMILY	SINGLE FAMILY	80
22100288	16740 KENTFIELD	04/26/22	\$170,000	WD	03-ARM'S LENGTH	\$170,000	\$80,939	\$1,901	\$168,099	\$153,472	\$16,528	\$	2.92	9.72%	1,428	\$117.72	1R115	0.130	5,663	45	126	SINGLE FAMILY	SINGLE FAMILY	67
22105606-7	16905 BRAILE	09/15/22	\$200,000	WD	03-ARM'S LENGTH	\$200,000	\$89,177	\$1,811	\$198,189	\$169,643	\$30,357	\$	5.86	15.18%	1,550	\$127.86	1R115	0.119	5,184	45	115	SINGLE FAMILY	SINGLE FAMILY	67
						\$568,000					\$49,245	\$	3.07	8.67%					16,030					
22081801	16851 AVON	04/29/22	\$165,000	WD	03-ARM'S LENGTH	\$165,000	\$162,534	\$2,893	\$162,107	\$159,322	\$5,678	\$	1.10	3.44%	1,386	\$116.96	1R116	0.119	5,184	40	130	SINGLE FAMILY	SINGLE FAMILY	67
22089531	16554 HUNTINGTON	06/16/22	\$190,000	WD	03-ARM'S LENGTH	\$190,000	\$185,898	\$3,325	\$186,675	\$182,209	\$7,791	\$	1.20	4.10%	1,698	\$109.94	1R116	0.149	6,490	50	130	SINGLE FAMILY	SINGLE FAMILY	27073760
22083148	16534 STAHELIN	10/06/23	\$130,000	WD	03-ARM'S LENGTH	\$130,000	\$126,241	\$2,901	\$127,099	\$123,094	\$6,906	\$	1.28	5.31%	925	\$137.40	1R116	0.124	5,401	40	135	SINGLE FAMILY	SINGLE FAMILY	67
22090880	16614 EDINBOROUGH	09/22/22	\$220,000	WD	03-ARM'S LENGTH	\$220,000	\$207,883	\$3,325	\$216,675	\$204,150	\$15,850	\$	2.44	7.20%	1,613	\$134.33	1R116	0.149	6,490	50	130	SINGLE FAMILY	SINGLE FAMILY	67
22012087	18905 PURITAN	06/17/22	\$240,000	WD	03-ARM'S LENGTH	\$240,000	\$218,463	\$3,415	\$236,585	\$214,619	\$25,381	\$	3.83	10.58%	2,006	\$117.94	1R116	0.152	6,621	50	131	SINGLE FAMILY	SINGLE FAMILY	67
22083473	16845 WESTMORELAND	05/11/22	\$228,000	WD	03-ARM'S LENGTH	\$228,000	\$203,126	\$4,102	\$223,898	\$198,627	\$29,373	\$	4.27	12.88%	1,911	\$117.36	1R116	0.158	6,882	50	138	SINGLE FAMILY	SINGLE FAMILY	67
22084407	16705 PLAINVIEW	12/20/22	\$245,000	WD	03-ARM'S LENGTH	\$245,000	\$212,999	\$3,606	\$241,394	\$208,975	\$36,025	\$	5.04	14.70%	1,662	\$145.24	1R116	0.164	7,144	55	130	SINGLE FAMILY	SINGLE FAMILY	67
22125024	9531 W OUTER	12/02/22	\$259,000	PTA	03-ARM'S LENGTH	\$259,000	\$217,442	\$4,158	\$254,842	\$212,858	\$46,142	\$	5.24	17.82%	2,368	\$107.62	1R116	0.202	8,799	60	147	SINGLE FAMILY	SINGLE FAMILY	67
						\$1,677,000					\$173,147	\$	3.27	10.32%					53,013					
22060398	16755 MURRAY HILL	04/11/22	\$108,000	WD	03-ARM'S LENGTH	\$108,000	\$73,803	\$1,334	\$106,666	\$107,841	\$159	\$	0.04	0.15%	1,034	\$103.16	1R117	0.090	3,920	35	112	SINGLE FAMILY	SINGLE FAMILY	67
22054408	16241 FORRER	05/16/22	\$110,000	WD	03-ARM'S LENGTH	\$110,000	\$75,653	\$1,941	\$108,059	\$109,690	\$310	\$	0.05	0.28%	1,155	\$93.56	1R117	0.142	6,186	40	155	SINGLE FAMILY	SINGLE FAMILY	67
22063279	16734 FERGUSON	06/24/22	\$107,000	WD	03-ARM'S LENGTH	\$107,000	\$73,039	\$1,413	\$105,587	\$106,586	\$414	\$	0.10	0.39%	1,015	\$104.03	1R117	0.095	4,138	40	104	SINGLE FAMILY	SINGLE FAMILY	67
22069807	16734 HARLOW	12/07/22	\$125,000	WD	03-ARM'S LENGTH	\$125,000	\$85,175	\$1,554	\$123,446	\$124,436	\$564	\$	0.12	0.45%	1,208	\$102.19	1R117	0.104	4,530	40	113	SINGLE FAMILY	SINGLE FAMILY	67
22061422	16700 ASBURY	08/14/23	\$135,000	PTA	03-ARM'S LENGTH	\$135,000	\$91,252	\$944	\$134,056	\$134,387	\$613	\$	0.14	0.45%	1,271	\$105.47	1R117	0.101	4,400	39	112	SINGLE FAMILY	SINGLE FAMILY	67
22060018	16124 MURRAY HILL	06/23/23	\$96,000	WD	03-ARM'S LENGTH	\$96,000	\$62,109	\$1,651	\$94,349	\$89,967	\$6,033	\$	1.26	6.28%	1,032	\$91.42	1R117	0.110	4,792	43	112	SINGLE FAMILY	SINGLE FAMILY	52
22063778	16713 FERGUSON	07/22/22	\$110,000	WD	03-ARM'S LENGTH	\$110,000	\$69,720	\$1,460	\$108,540	\$101,577	\$8,423	\$	1.97	7.66%	968	\$112.13	1R117	0.098	4,269	40	107	SINGLE FAMILY	SINGLE FAMILY	67
22067292	16545 LINDSAY	09/23/22	\$125,000	WD	03-ARM'S LENGTH	\$125,000	\$78,269	\$1,840	\$123,160	\$113,734	\$11,266	\$	2.09	9.01%	1,361	\$90.49	1R117	0.124	5,401	40	135	SINGLE FAMILY	SINGLE FAMILY	52
22056038	16544 RUTHERFORD	07/08/22	\$100,000	WD	03-ARM'S LENGTH	\$100,000	\$59,569	\$1,444	\$98,556	\$86,496	\$13,504	\$	3.20	13.50%	771	\$127.83	1R117	0.097	4,225	35	121	SINGLE FAMILY	SINGLE FAMILY	67
22063956	16134 BILTMORE	10/11/22	\$140,000	WD	03-ARM'S LENGTH	\$140,000	\$81,909	\$1,460	\$138,540	\$119,716	\$20,284	\$	4.75	14.49%	1,177	\$117.71	1R117	0.098	4,269	40	107	SINGLE FAMILY	SINGLE FAMILY	67
22069200	16116 OAKFIELD	09/22/22	\$134,000	WD	03-ARM'S LENGTH	\$134,000	\$75,237	\$1,776	\$132,224	\$109,317	\$24,683	\$	4.88	18.42%	1,146	\$115.38	1R117	0.116	5,053	40	127	SINGLE FAMILY	SINGLE FAMILY	52
						\$1,290,000					\$86,253	\$	1.69	6.69%					51,183					
22044160	16225 ROBSON	08/11/23	\$120,000	WD	03-ARM'S LENGTH	\$120,000	\$68,913	\$1,213	\$118,787	\$118,981	\$1,019	\$	0.20	0.85%	939	\$126.50	1R118	0.120	5,227	42	124	SINGLE FAMILY	SINGLE FAMILY	67
22035142	16587 ARDMORE	07/28/22	\$125,000	WD	03-ARM'S LENGTH	\$125,000	\$69,909	\$1,613	\$123,387	\$120,028	\$4,972	\$	1.13	3.98%	1,491	\$82.75	1R118	0.101	4,400	40	110	SINGLE FAMILY	SINGLE FAMILY	52
22040856	16850 MARLOWE	07/05/22	\$160,000	WD	03-ARM'S LENGTH	\$160,000	\$85,262	\$1,800	\$158,200	\$146,682	\$13,318	\$	2.73	8.32%	1,222	\$129.46	1R118	0.112	4,879	40	123	SINGLE FAMILY	SINGLE FAMILY	67
						\$405,000					\$19,309	\$	1.33	4.77%					14,505					
22103090	15515 FIELDING	09/22/22	\$115,000	WD	03-ARM'S LENGTH	\$115,000	\$63,102	\$1,627	\$113,373	\$113,214	\$1,786	\$	0.31	1.55%	1,030	\$110.07	1R119	0.132	5,750	46	125	SINGLE FAMILY	SINGLE FAMILY	67
22103959	15454 PATTON	10/25/23	\$90,000	LCM	03-ARM'S LENGTH	\$90,000	\$48,334	\$1,611	\$88,389	\$86,046	\$3,954	\$	0.70	4.39%	814	\$108.59	1R119	0.130	5,663	45	126	SINGLE FAMILY	SINGLE FAMILY	67
22105277	15480 BRAILE	06/15/22	\$84,900	WD	03-ARM'S LENGTH	\$84,900	\$43,315	\$978	\$83,922	\$79,810	\$5,090	\$	0.90	5.99%	918	\$91.42	1R119	0.130	5,663	45	126	SINGLE FAMILY	SINGLE FAMILY	67
22098263	15755 VAUGHAN	06/05/23	\$132,000	WD	03-ARM'S LENGTH	\$132,000	\$69,033	\$1,840	\$130,160	\$123,744	\$8,256	\$	1.19	6.25%	1,478	\$88.06	1R119	0.159	6,926	60	115	SINGLE FAMILY	SINGLE FAMILY	52
						\$421,900					\$19,086	\$	0.80	4.52%					24,002					
22085106-7	15485 ARTESIAN	04/28/22	\$159,000	WD	03-ARM'S LENGTH	\$159,000	\$100,522	\$2,986	\$156,014	\$145,359	\$13,641	\$	0.91	8.58%	1,382	\$112.89	1R120	0.345	15,028	90	167	SINGLE FAMILY	SINGLE FAMILY	67
22125683	9888 W OUTER	01/31/23	\$185,000	WD	03-ARM'S LENGTH	\$185,000	\$119,998	\$1,417	\$183,583	\$176,723	\$8,277	\$	1.84	4.47%	1,578	\$116.34	1R120	0.103	4,487	44	99	SINGLE FAMILY	SINGLE FAMILY	67
22085109	15465 ARTESIAN	04/18/22	\$239,900	WD	03-ARM'S LENGTH	\$239,900	\$153,750	\$1,783	\$238,117	\$226,478	\$13,422	\$	2.23	5.59%	2,083	\$114.31	1R120	0.138	6,011	50	120	SINGLE FAMILY	SINGLE FAMILY	27061920
22093975	15844 PLAINVIEW	08/25/23	\$154,900	WD	03-ARM'S LENGTH	\$154,900	\$93,085	\$2,002	\$152,898	\$135,742	\$19,158	\$	2.71	12.37%	1,209	\$126.47	1R120	0.162	7,057	50	141	SINGLE FAMILY	SINGLE FAMILY	67
22124996	9909 W OUTER	12/22/22	\$232,000	WD	03-ARM'S LENGTH	\$232,000	\$145,745	\$1,687	\$230,313	\$214,692	\$17,309	\$	3.34	7.46%	1,757	\$131.08	1R120	0.119	5,184	47	110	SINGLE FAMILY	SINGLE FAMILY	67
						\$970,800					\$71,806	\$	1.90	7.40%					37,767					
22052325	15435 WINTHROP	08/22/23	\$150,000	PTA	03-ARM'S LENGTH	\$150,000	\$77,953	\$1,723	\$148,277	\$139,106	\$10,894	\$	1.85	7.26%	1,200	\$123.56	1R121	0.135	5,881	38	157	SINGLE FAMILY	SINGLE FAMILY	67
22063918	15472 BILTMORE	10/19/22	\$168,000	WD	03-ARM'S LENGTH	\$168,000	\$88,445	\$1,485	\$166,515	\$158,686	\$9,314	\$	2.00	5.54%	1,354	\$122.98	1R121	0.107	4,661	44	107	SINGLE FAMILY	SINGLE FAMILY	67
22059971	15354 MURRAY HILL	09/15/23	\$164,900	WD	03-ARM'S LENGTH	\$164,900	\$85,960	\$1,635	\$163,265	\$153,878	\$11,022	\$	2.07	6.68%	1,288	\$126.76	1R121	0.122	5,314	44	121	SINGLE FAMILY	SINGLE FAMILY	67
						\$482,900					\$31,230	\$	1.97	6.47%					15,856					

22041302	14567	MARLOWE	05/27/22	\$113,000	WD	03-ARM'S LENGTH	\$113,000	\$44,538	\$1,408	\$111,592	\$100,536	\$12,464	\$	3.58	11.03%	1,165	\$95.79	1R128	0.080	3,485	35	100	SINGLE FAMILY	SINGLE FAMILY	52	
22120904-5	12701	RIVERDALE	09/30/22	\$114,900	WD	03-ARM'S LENGTH	\$114,900	\$74,882	\$1,749	\$113,151	\$111,653	\$3,247	\$	0.53	2.83%	952	\$118.86	1R129	0.140	6,098	50	122	SINGLE FAMILY	SINGLE FAMILY	67	
22118280	12826	BEAVERLAND	10/04/22	\$130,000	WD	03-ARM'S LENGTH	\$130,000	\$83,109	\$1,613	\$128,387	\$124,421	\$5,579	\$	1.06	4.29%	1,092	\$117.57	1R129	0.121	5,271	50	105	SINGLE FAMILY	SINGLE FAMILY	67	
22119508	12631	WEST PARKWAY	05/20/22	\$125,000	WD	03-ARM'S LENGTH	\$125,000	\$74,667	\$1,602	\$123,398	\$111,550	\$13,450	\$	2.59	10.76%	992	\$124.39	1R129	0.119	5,184	48	108	SINGLE FAMILY	SINGLE FAMILY	67	
				\$369,900								\$22,276	\$	1.35	6.02%					16,553						
22084578	14156	ARTESIAN	06/07/22	\$165,000	PTA	03-ARM'S LENGTH	\$165,000	\$155,739	\$2,758	\$162,242	\$163,967	\$1,033	\$	0.20	0.63%	1,432	\$113.30	1R132	0.121	5,271	45	117	SINGLE FAMILY	SINGLE FAMILY	67	
22084570	14046	ARTESIAN	07/22/22	\$170,000	WD	03-ARM'S LENGTH	\$170,000	\$157,929	\$2,758	\$167,242	\$166,314	\$3,686	\$	0.70	2.17%	1,634	\$102.35	1R132	0.121	5,271	45	117	SINGLE FAMILY	SINGLE FAMILY	67	
22084644	14201	WARWICK	10/28/22	\$137,000	PTA	03-ARM'S LENGTH	\$137,000	\$126,888	\$2,700	\$134,300	\$133,106	\$3,894	\$	0.74	2.84%	1,294	\$103.79	1R132	0.120	5,227	40	131	SINGLE FAMILY	SINGLE FAMILY	67	
22087632	14185	PIEDMONT	05/06/22	\$135,000	WD	03-ARM'S LENGTH	\$135,000	\$121,452	\$2,530	\$132,470	\$127,462	\$7,538	\$	1.57	5.58%	1,044	\$126.89	1R132	0.110	4,792	40	120	SINGLE FAMILY	SINGLE FAMILY	67	
22084558	13940	ARTESIAN	10/11/22	\$160,000	WD	03-ARM'S LENGTH	\$160,000	\$142,767	\$2,758	\$157,242	\$150,063	\$9,937	\$	1.89	6.21%	1,296	\$121.33	1R132	0.121	5,271	45	117	SINGLE FAMILY	SINGLE FAMILY	67	
27230417	14041	WARWICK	12/15/22	\$161,000	WD	03-ARM'S LENGTH	\$161,000	\$138,556	\$633	\$160,367	\$147,827	\$13,173	\$	2.52	8.18%	1,163	\$137.89	1R132	0.120	5,227	40	131	SINGLE FAMILY	NEZ BLDG	67	
22077963	13921	PENROD	05/25/22	\$175,000	WD	03-ARM'S LENGTH	\$175,000	\$149,844	\$2,669	\$172,331	\$157,744	\$17,256	\$	3.44	9.86%	1,382	\$124.70	1R132	0.115	5,009	40	125	SINGLE FAMILY	SINGLE FAMILY	67	
22062811	13975	GLASTONBURY	04/25/22	\$120,000	WD	03-ARM'S LENGTH	\$120,000	\$96,186	\$2,656	\$117,344	\$100,247	\$19,753	\$	3.88	16.46%	1,202	\$97.62	1R132	0.117	5,097	40	127	SINGLE FAMILY	SINGLE FAMILY	52	
22085221	13993	ARTESIAN	07/01/22	\$180,000	WD	03-ARM'S LENGTH	\$180,000	\$148,776	\$2,951	\$177,049	\$156,297	\$23,703	\$	4.06	13.17%	1,382	\$128.11	1R132	0.134	5,837	45	130	SINGLE FAMILY	SINGLE FAMILY	67	
				\$1,403,000								\$99,973	\$	2.13	7.13%					47,001						
22075694-5	13621	ASHTON	03/24/23	\$133,000	WD	03-ARM'S LENGTH	\$133,000	\$48,661	\$1,683	\$131,317	\$118,035	\$14,965	\$	2.44	11.25%	1,110	\$118.30	1R133	0.141	6,142	49	125	SINGLE FAMILY	SINGLE FAMILY	67	
22066247	14164	ABINGTON	10/07/22	\$240,000	WD	03-ARM'S LENGTH	\$240,000	\$208,700	\$2,275	\$237,725	\$238,091	\$1,909	\$	0.21	0.80%	2,242	\$106.03	1R134	0.206	8,973	60	150	SINGLE FAMILY	SINGLE FAMILY	67	
22071171	14024	ARCHDALE	05/27/22	\$180,000	WD	03-ARM'S LENGTH	\$180,000	\$152,288	\$2,223	\$177,777	\$173,085	\$6,915	\$	0.80	3.84%	1,695	\$104.88	1R134	0.198	8,625	50	172	SINGLE FAMILY	SINGLE FAMILY	67	
22066243	14114	ABINGTON	07/07/22	\$205,000	WD	03-ARM'S LENGTH	\$205,000	\$173,578	\$2,281	\$202,719	\$197,574	\$7,426	\$	0.82	3.62%	1,763	\$114.99	1R134	0.207	9,017	60	150	SINGLE FAMILY	SINGLE FAMILY	67	
22070487	14374	LONGACRE	08/12/22	\$210,000	WD	03-ARM'S LENGTH	\$210,000	\$176,139	\$2,055	\$207,945	\$200,789	\$9,211	\$	1.23	4.39%	1,920	\$108.30	1R134	0.172	7,492	50	150	SINGLE FAMILY	SINGLE FAMILY	67	
22071926	14025	ARCHDALE	10/21/22	\$189,000	WD	03-ARM'S LENGTH	\$189,000	\$157,439	\$2,094	\$186,906	\$179,175	\$9,825	\$	1.27	5.20%	1,751	\$106.74	1R134	0.178	7,754	50	155	SINGLE FAMILY	SINGLE FAMILY	67	
22068834	14623	RUTLAND	11/18/22	\$192,500	WD	03-ARM'S LENGTH	\$192,500	\$156,410	\$2,662	\$189,838	\$177,333	\$15,167	\$	1.28	7.88%	1,504	\$126.22	1R134	0.273	11,892	60	198	SINGLE FAMILY	SINGLE FAMILY	67	
22071228	14668	ARCHDALE	10/18/23	\$127,000	WD	03-ARM'S LENGTH	\$127,000	\$102,589	\$1,955	\$125,045	\$116,072	\$10,928	\$	1.59	8.61%	773	\$161.77	1R134	0.158	6,882	40	172	SINGLE FAMILY	SINGLE FAMILY	67	
				\$1,343,500								\$61,380	\$	1.01	4.57%					60,636						
22053077	14160	MONTROSE	06/22/22	\$93,000	WD	03-ARM'S LENGTH	\$93,000	\$48,122	\$1,849	\$91,151	\$89,503	\$3,497	\$	0.79	3.76%	1,075	\$84.79	1R135	0.101	4,400	41	108	SINGLE FAMILY	SINGLE FAMILY	52	
22061324	14394	ASBURY	08/15/22	\$213,500	WD	03-ARM'S LENGTH	\$213,500	\$109,390	\$2,120	\$211,380	\$207,486	\$6,015	\$	1.21	2.82%	1,556	\$135.85	1R135	0.114	4,966	41	121	SINGLE FAMILY	SINGLE FAMILY	80	
22061308	14224	ASBURY	04/13/22	\$160,000	PTA	03-ARM'S LENGTH	\$160,000	\$77,959	\$2,120	\$157,880	\$146,691	\$13,309	\$	2.68	8.32%	1,272	\$124.12	1R135	0.114	4,966	41	121	SINGLE FAMILY	SINGLE FAMILY	67	
				\$466,500								\$22,821	\$	1.59	4.89%					14,331						
22071157	13616	ARCHDALE	12/30/22	\$183,000	WD	03-ARM'S LENGTH	\$183,000	\$114,034	\$1,919	\$181,081	\$180,539	\$2,461	\$	0.46	1.34%	1,484	\$122.02	1R136	0.122	5,314	40	133	SINGLE FAMILY	SINGLE FAMILY	80	
22067707	12886	MEMORIAL	05/23/23	\$128,000	WD	03-ARM'S LENGTH	\$128,000	\$77,462	\$1,893	\$126,107	\$121,689	\$6,311	\$	1.17	4.93%	1,090	\$115.69	1R136	0.124	5,401	40	135	SINGLE FAMILY	SINGLE FAMILY	67	
				\$311,000								\$8,771	\$	0.82	2.82%					10,716						
22037746	13302	STRATHMOOR	07/18/22	\$124,000	WD	03-ARM'S LENGTH	\$124,000	\$25,197	\$2,021	\$121,979	\$99,897	\$24,103	\$	5.82	19.44%	1,467	\$83.15	1R137	0.095	4,138	40	103	SINGLE FAMILY	SINGLE FAMILY	45	
22052103	20211	WINTHROP	04/20/22	\$140,000	WD	03-ARM'S LENGTH	\$140,000	\$91,332	\$1,767	\$138,233	\$139,292	\$708	\$	0.11	0.51%	1,101	\$125.55	2R201	0.144	6,273	40	157	SINGLE FAMILY	SINGLE FAMILY	80	
22061592	19134	ASBURY	07/27/22	\$100,000	PTA	03-ARM'S LENGTH	\$100,000	\$64,833	\$1,271	\$98,729	\$98,852	\$1,148	\$	0.28	1.15%	1,031	\$95.76	2R201	0.093	4,051	37	109	SINGLE FAMILY	SINGLE FAMILY	67	
22072514	20043	FENMORE	10/27/22	\$70,000	WD	03-ARM'S LENGTH	\$70,000	\$45,369	\$1,599	\$68,401	\$68,072	\$1,928	\$	0.37	2.75%	716	\$95.53	2R201	0.120	5,227	40	131	SINGLE FAMILY	SINGLE FAMILY	52	
22061623	19418	ASBURY	04/14/22	\$100,000	PTA	03-ARM'S LENGTH	\$100,000	\$63,578	\$1,183	\$98,817	\$97,307	\$2,963	\$	0.79	2.96%	936	\$105.57	2R201	0.086	3,746	35	109	SINGLE FAMILY	SINGLE FAMILY	67	
22063629-30	19217	FERGUSON	06/29/22	\$80,000	WD	03-ARM'S LENGTH	\$80,000	\$50,205	\$1,418	\$78,582	\$75,874	\$4,126	\$	0.91	5.16%	738	\$106.48	2R201	0.104	4,530	40	113	SINGLE FAMILY	SINGLE FAMILY	67	
22069947	19376	HARLOW	02/17/23	\$100,000	WD	03-ARM'S LENGTH	\$100,000	\$62,231	\$855	\$99,145	\$95,453	\$4,547	\$	1.00	4.55%	853	\$116.23	2R201	0.104	4,530	40	113	SINGLE FAMILY	SINGLE FAMILY	80	
22054213	20115	FORRER	08/31/22	\$172,000	WD	03-ARM'S LENGTH	\$172,000	\$105,380	\$1,865	\$170,135	\$160,988	\$11,012	\$	1.66	6.40%	1,315	\$129.38	2R201	0.152	6,621	41	160	SINGLE FAMILY	SINGLE FAMILY	67	
22069454	20500	OAKFIELD	01/11/23	\$85,000	WD	03-ARM'S LENGTH	\$85,000	\$50,454	\$936	\$84,064	\$77,011	\$7,989	\$	1.67	9.40%	977	\$86.04	2R201	0.110	4,792	37	130	SINGLE FAMILY	SINGLE FAMILY	52	
22064302	19417	BILTMORE	01/25/24	\$84,000	PTA	03-ARM'S LENGTH	\$84,000	\$50,265	\$1,499	\$82,501	\$75,841	\$8,159	\$	1.70	9.71%	732	\$112.71	2R201	0.110	4,792	40	120	SINGLE FAMILY	SINGLE FAMILY	67	
22058769	19208	ST MARYS	09/16/22	\$125,000	WD	03-ARM'S LENGTH	\$125,000	\$76,583	\$1,271	\$123,729	\$117,126	\$7,874	\$	1.94	6.30%	1,237	\$100.02	2R201	0.093	4,051	37	109	SINGLE FAMILY	SINGLE FAMILY	67	
				\$1,056,000								\$50,454	\$	1.04	4.78%					48,613						
22046525	19767	SUSSEX	10/04/22	\$125,000	WD	03-ARM'S LENGTH	\$125,000	\$79,790	\$2,229	\$122,771	\$123,308	\$1,692	\$	0.35	1.35%	1,112	\$110.41	2R202	0.110	4,792	40	120	SINGLE FAMILY	SINGLE FAMILY	80	
22047776	19503	WHITCOMB	07/27/22	\$135,000	WD	03-ARM'S LENGTH	\$135,000	\$74,589	\$1,933	\$133,067	\$115,510	\$19,490	\$	3.24	14.44%	1,066	\$123.63	2R202	0.138	6,011	45	134	SINGLE FAMILY	SINGLE FAMILY	67	
22047686	19420	WHITCOMB	06/02/22	\$135,000	PTA	03-ARM'S LENGTH	\$135,000	\$74,199	\$1																	

16040625	17415 ILENE	04/14/23	\$145,000	WD	03-ARM'S LENGTH	\$145,000	\$103,317	\$1,092	\$143,908	\$139,082	\$5,918	\$	1.31	4.08%	1,003	\$143.48	2R214	0.104	4,530	42	108	SINGLE FAMILY	SINGLE FAMILY	67
16032193	18261 NORTHLAWN	06/17/22	\$245,000	WD	03-ARM'S LENGTH	\$245,000	\$177,334	\$1,745	\$243,255	\$236,897	\$6,103	\$	1.31	2.49%	2,068	\$117.63	2R214	0.107	4,661	40	117	SINGLE FAMILY	SINGLE FAMILY	67
16043054	18424 MENDOTA	04/19/23	\$145,000	WD	03-ARM'S LENGTH	\$145,000	\$104,056	\$1,497	\$143,503	\$139,536	\$5,464	\$	1.38	3.77%	1,204	\$119.19	2R214	0.091	3,964	35	113	SINGLE FAMILY	SINGLE FAMILY	67
16020267	18978 SANTA ROSA	11/30/22	\$160,000	PTA	03-ARM'S LENGTH	\$160,000	\$115,302	\$1,358	\$158,642	\$155,026	\$4,974	\$	1.39	3.11%	1,497	\$105.97	2R214	0.082	3,572	35	103	SINGLE FAMILY	SINGLE FAMILY	67
16042438	17127 BIRWOOD	05/16/23	\$113,000	WD	03-ARM'S LENGTH	\$113,000	\$80,273	\$1,528	\$111,472	\$107,136	\$5,964	\$	1.45	5.19%	1,046	\$106.57	2R214	0.093	4,051	35	116	SINGLE FAMILY	SINGLE FAMILY	52
16020262	18942 SANTA ROSA	12/23/22	\$149,900	DD	03-ARM'S LENGTH	\$149,900	\$107,661	\$1,358	\$148,542	\$144,630	\$5,270	\$	1.48	3.52%	1,366	\$108.74	2R214	0.082	3,572	35	103	SINGLE FAMILY	SINGLE FAMILY	67
22021206	18054 APPOLINE	08/10/22	\$175,000	WD	03-ARM'S LENGTH	\$175,000	\$125,866	\$1,361	\$173,639	\$169,395	\$5,605	\$	1.51	3.20%	1,465	\$118.52	2R214	0.085	3,703	35	106	SINGLE FAMILY	SINGLE FAMILY	67
16029817	18435 GREENLAWN	06/23/22	\$235,000	WD	03-ARM'S LENGTH	\$235,000	\$169,231	\$1,745	\$233,255	\$227,872	\$7,128	\$	1.53	3.03%	1,836	\$127.05	2R214	0.107	4,661	40	117	SINGLE FAMILY	SINGLE FAMILY	67
16033975	19320 OHIO	05/19/23	\$130,000	WD	03-ARM'S LENGTH	\$130,000	\$89,428	\$2,286	\$127,714	\$118,561	\$11,439	\$	1.62	8.80%	1,013	\$126.08	2R214	0.162	7,057	70	101	SINGLE FAMILY	SINGLE FAMILY	67
16040588	18475 ILENE	07/25/22	\$130,000	WD	03-ARM'S LENGTH	\$130,000	\$92,241	\$1,432	\$128,568	\$123,550	\$6,450	\$	1.70	4.96%	1,484	\$86.64	2R214	0.087	3,790	35	108	SINGLE FAMILY	INCOME BUNGALOW	52
16025630	18460 SAN JUAN	01/12/23	\$210,000	WD	03-ARM'S LENGTH	\$210,000	\$149,312	\$1,792	\$208,208	\$200,707	\$9,293	\$	1.94	4.43%	1,886	\$110.40	2R214	0.110	4,792	40	120	SINGLE FAMILY	SINGLE FAMILY	67
16040647	17175 ILENE	05/31/22	\$154,000	WD	03-ARM'S LENGTH	\$154,000	\$109,627	\$2,040	\$151,960	\$146,377	\$7,623	\$	2.01	4.95%	1,053	\$144.31	2R214	0.087	3,790	35	108	SINGLE FAMILY	SINGLE FAMILY	67
16042375	18459 BIRWOOD	06/10/22	\$170,000	WD	03-ARM'S LENGTH	\$170,000	\$119,649	\$1,730	\$168,270	\$160,434	\$9,566	\$	2.07	5.63%	1,432	\$117.51	2R214	0.106	4,617	41	113	SINGLE FAMILY	SINGLE FAMILY	67
27240778	18480 OHIO	05/16/22	\$235,000	WD	03-ARM'S LENGTH	\$235,000	\$165,957	\$6,766	\$234,324	\$224,872	\$10,128	\$	2.33	4.31%	1,824	\$128.47	2R214	0.100	4,356	40	109	SINGLE FAMILY	NEZ BLDG	67
16041270	18466 GRIGGS	09/12/23	\$102,000	WD	03-ARM'S LENGTH	\$102,000	\$69,912	\$1,431	\$100,569	\$83,171	\$8,829	\$	2.33	8.66%	921	\$109.20	2R214	0.087	3,790	35	108	SINGLE FAMILY	SINGLE FAMILY	52
22023879	18453 SORRENTO	01/27/23	\$190,000	WD	03-ARM'S LENGTH	\$190,000	\$132,746	\$1,792	\$188,208	\$178,169	\$11,831	\$	2.47	6.23%	1,590	\$118.37	2R214	0.110	4,792	40	120	SINGLE FAMILY	SINGLE FAMILY	67
16036881	18445 KENTUCKY	12/01/22	\$195,000	WD	03-ARM'S LENGTH	\$195,000	\$136,563	\$1,671	\$193,329	\$183,527	\$11,473	\$	2.58	5.88%	1,568	\$123.30	2R214	0.102	4,443	40	112	SINGLE FAMILY	SINGLE FAMILY	67
16046283	19346 MEYERS	07/01/22	\$55,000	WD	03-ARM'S LENGTH	\$55,000	\$36,113	\$992	\$54,008	\$47,784	\$7,216	\$	2.63	13.12%	800	\$67.51	2R214	0.063	2,744	26	105	1/2 DUPLEX	SINGLE FAMILY	36
16039549	19329 WASHBURN	10/16/23	\$175,000	WD	03-ARM'S LENGTH	\$175,000	\$121,025	\$1,702	\$173,298	\$162,344	\$12,656	\$	2.72	7.23%	1,493	\$116.07	2R214	0.107	4,661	40	117	SINGLE FAMILY	SINGLE FAMILY	67
16043341	17367 MENDOTA	06/26/23	\$124,000	WD	03-ARM'S LENGTH	\$124,000	\$85,018	\$1,420	\$122,580	\$113,739	\$10,261	\$	2.74	8.28%	822	\$149.12	2R214	0.086	3,746	35	108	SINGLE FAMILY	SINGLE FAMILY	67
16032966	18652 CHERRYLAWN	04/08/22	\$140,000	WD	03-ARM'S LENGTH	\$140,000	\$96,116	\$1,501	\$138,499	\$128,728	\$11,272	\$	2.75	8.05%	1,261	\$109.83	2R214	0.094	4,095	35	117	SINGLE FAMILY	SINGLE FAMILY	67
16044205	18025 PINEHURST	02/10/23	\$115,000	WD	03-ARM'S LENGTH	\$115,000	\$77,181	\$1,652	\$113,348	\$102,761	\$12,239	\$	2.78	10.64%	822	\$137.89	2R214	0.101	4,400	35	126	SINGLE FAMILY	SINGLE FAMILY	67
16025674	19178 SAN JUAN	12/22/23	\$219,000	PTA	03-ARM'S LENGTH	\$219,000	\$153,577	\$1,579	\$217,421	\$206,800	\$12,200	\$	2.92	5.57%	1,638	\$132.74	2R214	0.096	4,182	35	129	SINGLE FAMILY	SINGLE FAMILY	67
16042357	18671 BIRWOOD	09/23/22	\$135,000	WD	03-ARM'S LENGTH	\$135,000	\$90,810	\$1,761	\$133,239	\$121,155	\$13,845	\$	2.94	10.26%	885	\$150.55	2R214	0.108	4,704	39	122	SINGLE FAMILY	SINGLE FAMILY	67
22022548	19206 STEEL	07/22/22	\$140,000	WD	03-ARM'S LENGTH	\$140,000	\$95,908	\$3,008	\$136,992	\$126,395	\$13,605	\$	3.12	9.72%	1,376	\$99.56	2R214	0.100	4,356	40	109	SINGLE FAMILY	SINGLE FAMILY	52
16028525.002L	19130 WOODINGHAM	11/01/22	\$210,000	PTA	03-ARM'S LENGTH	\$210,000	\$145,676	\$1,606	\$208,394	\$196,014	\$13,986	\$	3.28	6.66%	1,735	\$120.11	2R214	0.098	4,269	35	123	SINGLE FAMILY	SINGLE FAMILY	67
16032144	18981 NORTHLAWN	06/28/22	\$210,000	WD	03-ARM'S LENGTH	\$210,000	\$145,790	\$1,544	\$208,456	\$196,253	\$13,747	\$	3.36	6.55%	1,420	\$146.80	2R214	0.094	4,095	35	117	SINGLE FAMILY	SINGLE FAMILY	52
16022838	17342 PRAIRIE	03/04/24	\$220,000	PTA	03-ARM'S LENGTH	\$220,000	\$152,703	\$1,716	\$218,284	\$206,424	\$14,576	\$	3.38	6.63%	1,725	\$126.54	2R214	0.099	4,312	39	111	SINGLE FAMILY	SINGLE FAMILY	80
16021659	18301 MONICA	11/28/22	\$180,900	PTA	03-ARM'S LENGTH	\$180,900	\$126,440	\$1,342	\$179,558	\$168,841	\$12,059	\$	3.42	6.67%	1,518	\$118.29	2R214	0.081	3,528	35	101	SINGLE FAMILY	SINGLE FAMILY	67
16030650	18937 ROSELAWN	04/18/22	\$184,000	WD	03-ARM'S LENGTH	\$184,000	\$126,282	\$1,544	\$182,456	\$169,712	\$14,288	\$	3.49	7.77%	1,500	\$121.64	2R214	0.094	4,095	35	117	SINGLE FAMILY	SINGLE FAMILY	67
16045470	19306 MANOR	08/19/22	\$145,000	WD	03-ARM'S LENGTH	\$145,000	\$96,855	\$1,594	\$143,406	\$129,607	\$15,393	\$	3.53	10.62%	1,206	\$118.91	2R214	0.100	4,356	40	109	SINGLE FAMILY	SINGLE FAMILY	67
16035057	18461 WISCONSIN	05/02/22	\$185,000	WD	03-ARM'S LENGTH	\$185,000	\$125,470	\$1,714	\$183,286	\$168,376	\$16,624	\$	3.63	8.99%	1,498	\$122.35	2R214	0.105	4,574	40	114	SINGLE FAMILY	SINGLE FAMILY	67
16030369	17206 ROSELAWN	05/26/23	\$266,500	WD	03-ARM'S LENGTH	\$266,500	\$184,762	\$1,628	\$264,872	\$249,162	\$17,338	\$	3.83	6.51%	2,171	\$122.00	2R214	0.104	4,530	35	130	TWO FAMILY FLAT	TWO FAMILY	67
16040569	18689 ILENE	07/25/22	\$121,000	WD	03-ARM'S LENGTH	\$121,000	\$77,853	\$759	\$120,241	\$104,890	\$16,110	\$	4.25	13.31%	800	\$150.30	2R214	0.087	3,790	35	108	SINGLE FAMILY	SINGLE FAMILY	67
16043304	18087 MENDOTA	04/06/22	\$125,000	WD	03-ARM'S LENGTH	\$125,000	\$79,463	\$988	\$124,132	\$106,932	\$18,068	\$	4.41	14.45%	851	\$145.87	2R214	0.094	4,095	35	117	SINGLE FAMILY	SINGLE FAMILY	67
16020512	18613 SANTA ROSA	08/10/22	\$182,500	WD	03-ARM'S LENGTH	\$182,500	\$123,428	\$1,358	\$181,142	\$166,082	\$16,418	\$	4.60	9.00%	1,568	\$115.52	2R214	0.082	3,572	35	103	SINGLE FAMILY	SINGLE FAMILY	67
16021634	18639 MONICA	12/16/22	\$190,000	WD	03-ARM'S LENGTH	\$190,000	\$128,152	\$1,342	\$188,658	\$172,531	\$17,469	\$	4.95	9.19%	1,409	\$133.89	2R214	0.081	3,528	35	101	SINGLE FAMILY	SINGLE FAMILY	80
16008766	8810 W SEVEN MILE	06/23/22	\$142,000	WD	03-ARM'S LENGTH	\$142,000	\$86,008	\$1,984	\$140,016	\$114,318	\$27,682	\$	4.96	19.49%	1,174	\$119.26	2R214	0.128	5,576	40	139	SINGLE FAMILY	SINGLE FAMILY	52
16032143	18987 NORTHLAWN	09/08/22	\$215,000	WD	03-ARM'S LENGTH	\$215,000	\$144,612	\$1,544	\$213,456	\$194,650	\$20,350	\$	4.97	9.46%	1,694	\$126.01	2R214	0.094	4,095	35	117	SINGLE FAMILY	SINGLE FAMILY	67
16033193	18687 CHERRYLAWN	01/04/23	\$206,000	WD	03-ARM'S LENGTH	\$206,000	\$138,801	\$1,451	\$204,549	\$186,871	\$19,129	\$	4.99	9.29%	1,506	\$135.82	2R214	0.088	3,833	35	110	SINGLE FAMILY	SINGLE FAMILY	80
16041278	18600 GRIGGS	05/09/23	\$184,000	WD	03-ARM'S LENGTH	\$184,000	\$116,305	\$1,350	\$182,650	\$156,401	\$27,599	\$	5.07	15.00%	1,384	\$131.97	2R214	0.125	5,445	50	109	SINGLE FAMILY	SINGLE FAMILY	67
16030429	18508 ROSELAWN	01/20/23	\$268,000	WD	03-ARM'S LENGTH	\$268,000	\$181,272	\$1,745	\$266,255	\$244,254	\$23,746	\$	5.09	8.86%	2,077	\$128.19	2R214	0.107	4,661	40	117	SINGLE FAMILY	SINGLE FAMILY	67
16020511	18619 SANTA ROSA	04/04/23	\$205,000	WD	03-ARM'S LENGTH	\$205,000	\$138,633	\$1,358	\$203,642	\$186,769	\$18,231	\$	5.10	8.89%	1,526	\$133.45	2R214	0.082	3,572	35	103	SINGLE FAMILY	SINGLE FAMILY	80
22021522	18233 APPOLINE	04/15/22	\$177,500	WD	03-ARM'S LENGTH	\$177,500	\$116,313	\$1,575	\$175,925	\$156,106	\$21,394	\$	5.12	12.05%	1,492	\$117.91	2R214	0.096	4,182	35	120	SINGLE FAMILY	SINGLE FAMILY	67
16032198	18221 NORTHLAWN	09/13/23	\$245,500	PTA	03-ARM'S LENGTH	\$245,500	\$164,401	\$1,745	\$243,755	\$221,301	\$24,199	\$	5.19	9.86%	2,148	\$113.48	2R214	0.107	4,661	40	117	SINGLE FAMILY	SINGLE FAMILY	67
16035093	18005 WISCONSIN	06/06/23	\$196,900	WD	03-ARM'S LENGTH	\$196,900	\$129,092	\$1,690	\$193,210	\$173,336	\$23,564	\$	5.25	11.97%	1,556	\$125.46	2R214	0.103	4,487	41	110	SINGLE FAMILY	SINGLE FAMILY	67
16035044	18639 WISCONSIN	10/17/22	\$140,000	WD	03-ARM'S LENGTH	\$140,000	\$90,064	\$1,389	\$138,611	\$120,646	\$19,354	\$	5.29	13.82%	1,504	\$92.16	2R214	0.084	3,659	35	104	SINGLE FAMILY	SINGLE FAMILY	52
16041252	18256 GRIGGS	01/18/23	\$135,000	PTA	03-ARM'S LENGTH	\$135,000	\$85,364	\$1,389	\$133,611	\$114,252	\$20,748	\$	5.47	15.37%	938	\$142.44	2R214	0.087	3,790	35	117	SINGLE FAMILY	SINGLE FAMILY	67
16035741	18610 INDIANA	06/06/23	\$200,000	WD	03-ARM'S LENGTH	\$200,000	\$133,531	\$1,389	\$198,611	\$179,785	\$20,215	\$	5.52	10.11%	1,733	\$114.61	2R214	0.084	3,659	35	104	SINGLE FAMILY	SINGLE FAMILY	67
1603571																								

13017360	18676 LAMONT	07/11/22	\$59,050	WD	03-ARM'S LENGTH	\$59,050	\$15,943	\$459	\$58,591	\$52,311	\$6,739	\$	1.80	11.41%	720	\$81.38	3R313	0.086	3,746	35	107	SINGLE FAMILY	SINGLE FAMILY	67	
						\$243,550					\$21,185	\$	1.72	8.70%					12,284						
17005370	8154 BLISS	09/13/23	\$148,000	WD	03-ARM'S LENGTH	\$148,000	\$55,520	\$1,252	\$146,748	\$118,489	\$29,511	\$	7.70	19.94%	1,310	\$112.02	3R315	0.088	3,833	35	110	SINGLE FAMILY	SINGLE FAMILY	51	
15003676-7	7103 EDGETON	02/19/24	\$103,000	WD	03-ARM'S LENGTH	\$103,000	\$27,219	\$792	\$102,208	\$88,681	\$14,319	\$	3.19	13.90%	862	\$118.57	3R316	0.103	4,487	43	105	SINGLE FAMILY	SINGLE FAMILY	67	
21024130	14030 E STATE FAIR	08/31/22	\$96,000	WD	03-ARM'S LENGTH	\$96,000	\$38,928	\$1,355	\$94,645	\$86,375	\$9,625	\$	2.19	10.03%	1,005	\$94.17	3R319	0.101	4,400	40	110	SINGLE FAMILY	SINGLE FAMILY	52	
21036084	17221 ROWE	08/25/22	\$115,000	WD	03-ARM'S LENGTH	\$115,000	\$45,463	\$1,341	\$113,659	\$95,917	\$19,083	\$	4.56	16.59%	785	\$144.79	3R320	0.096	4,182	35	119	SINGLE FAMILY	SINGLE FAMILY	67	
21033741	18660 HAMBURG	05/12/22	\$109,000	WD	03-ARM'S LENGTH	\$109,000	\$42,555	\$1,230	\$107,770	\$89,837	\$19,163	\$	5.00	17.58%	720	\$149.68	3R320	0.088	3,833	35	109	SINGLE FAMILY	SINGLE FAMILY	67	
						\$224,000					\$38,246	\$	4.77	17.07%					8,015						
21027502	14464 CARLISLE	06/16/23	\$126,100	WD	03-ARM'S LENGTH	\$126,100	\$59,354	\$1,569	\$124,531	\$107,208	\$18,892	\$	4.09	14.98%	972	\$128.12	3R322	0.106	4,617	40	114	SINGLE FAMILY	SINGLE FAMILY	67	
21025093.003L	16690 FAIRMOUNT	09/29/23	\$93,000	PTA	03-ARM'S LENGTH	\$93,000	\$44,728	\$1,200	\$91,800	\$81,361	\$11,639	\$	1.82	12.52%	891	\$103.03	3R323	0.147	6,403	52	123	SINGLE FAMILY	SINGLE FAMILY	52	
21025509.003L	16717 FAIRMOUNT	11/09/23	\$100,000	PTA	03-ARM'S LENGTH	\$100,000	\$48,142	\$1,834	\$98,166	\$86,557	\$13,443	\$	2.04	13.44%	896	\$109.56	3R323	0.151	6,578	50	132	NEZ LAND		27240893	26
						\$193,000					\$25,082	\$	1.93	13.00%					12,961						
21021822	14783 LAPPIN	06/22/22	\$113,000	WD	03-ARM'S LENGTH	\$113,000	\$26,276	\$1,510	\$111,490	\$97,889	\$15,111	\$	2.96	13.37%	1,164	\$95.78	3R324	0.117	5,097	40	127	SINGLE FAMILY	SINGLE FAMILY	52	
21023981	16304 E STATE FAIR	03/27/24	\$75,000	WD	03-ARM'S LENGTH	\$75,000	\$28,589	\$1,303	\$73,697	\$67,207	\$7,793	\$	1.58	10.39%	794	\$92.82	3R325	0.113	4,922	36	134	SINGLE FAMILY	SINGLE FAMILY	52	
21021334	16092 MADDELEIN	09/28/23	\$90,000	WD	03-ARM'S LENGTH	\$90,000	\$33,250	\$1,279	\$88,721	\$78,746	\$11,254	\$	2.44	12.50%	739	\$120.06	3R325	0.106	4,617	40	115	SINGLE FAMILY	SINGLE FAMILY	52	
						\$165,000					\$19,047	\$	2.00	11.54%					9,540						
17001350	8074 WALDEN	06/16/22	\$38,000	WD	03-ARM'S LENGTH	\$38,000	\$10,279	\$1,566	\$36,434	\$32,390	\$5,610	\$	1.42	14.76%	2,550	\$14.29	3R326	0.091	3,964	35	114	TWO FAMILY FLAT	TWO FAMILY	9	
21014222	11032 KENNEBEC	11/21/22	\$99,000	PTA	03-ARM'S LENGTH	\$99,000	\$39,832	\$1,032	\$97,968	\$97,733	\$1,267	\$	0.25	1.28%	1,057	\$92.68	4R401	0.116	5,053	49	104	SINGLE FAMILY	SINGLE FAMILY	52	
21013640	12065 COLLEGE	01/25/23	\$99,000	WD	03-ARM'S LENGTH	\$99,000	\$38,861	\$1,450	\$97,550	\$94,234	\$4,766	\$	1.04	4.81%	808	\$120.73	4R401	0.105	4,574	35	131	SINGLE FAMILY	SINGLE FAMILY	67	
21013440	11733 MINDEN	04/13/22	\$80,000	WD	03-ARM'S LENGTH	\$80,000	\$31,556	\$1,355	\$78,645	\$76,073	\$3,927	\$	0.92	4.91%	1,028	\$76.50	4R401	0.098	4,269	35	122	SINGLE FAMILY	SINGLE FAMILY	52	
21013827	11850 ENGLSIDE	10/28/22	\$91,000	WD	03-ARM'S LENGTH	\$91,000	\$33,969	\$1,599	\$89,401	\$81,537	\$9,463	\$	1.86	10.40%	997	\$89.67	4R401	0.117	5,097	39	131	SINGLE FAMILY	SINGLE FAMILY	52	
						\$369,000					\$19,423	\$	1.02	5.26%					18,992						
21019689	15620 FORDHAM	03/31/23	\$82,500	WD	03-ARM'S LENGTH	\$82,500	\$40,293	\$1,303	\$81,197	\$77,361	\$5,139	\$	1.30	6.23%	819	\$99.14	4R403	0.091	3,964	35	122	SINGLE FAMILY	SINGLE FAMILY	52	
21080008	19205 MCCORMICK	07/07/22	\$97,500	WD	03-ARM'S LENGTH	\$97,500	\$50,614	\$1,524	\$95,976	\$96,067	\$1,433	\$	0.28	1.47%	900	\$106.64	4R404	0.118	5,140	45	114	SINGLE FAMILY	SINGLE FAMILY	67	
21068413	11006 PEERLESS	03/01/24	\$125,000	PTA	03-ARM'S LENGTH	\$125,000	\$66,238	\$1,659	\$123,341	\$123,952	\$1,048	\$	0.19	0.84%	1,020	\$120.92	4R405	0.124	5,401	43	126	SINGLE FAMILY	SINGLE FAMILY	67	
21068151.01	11326 MCKINNEY	04/24/23	\$115,000	WD	03-ARM'S LENGTH	\$115,000	\$60,771	\$1,588	\$113,412	\$113,595	\$1,405	\$	0.27	1.22%	903	\$125.59	4R405	0.120	5,227	42	126	SINGLE FAMILY	SINGLE FAMILY	67	
21068169.01	11325 MCKINNEY	07/07/22	\$105,000	WD	03-ARM'S LENGTH	\$105,000	\$55,111	\$1,588	\$103,412	\$102,731	\$2,269	\$	0.43	2.16%	816	\$126.73	4R405	0.120	5,227	42	126	SINGLE FAMILY	SINGLE FAMILY	67	
21068496.01	10809 MARNE	12/16/22	\$140,600	WD	03-ARM'S LENGTH	\$140,600	\$73,228	\$1,582	\$139,018	\$137,516	\$3,084	\$	0.59	2.19%	1,103	\$126.04	4R405	0.119	5,184	41	126	SINGLE FAMILY	SINGLE FAMILY	67	
21068582	10754 LANARK	07/22/22	\$108,000	WD	03-ARM'S LENGTH	\$108,000	\$56,037	\$1,543	\$106,457	\$104,595	\$3,405	\$	0.69	3.15%	951	\$111.94	4R405	0.114	4,966	43	116	SINGLE FAMILY	SINGLE FAMILY	67	
21064879	11976 LAKEPOINTE	05/08/23	\$35,000	WD	03-ARM'S LENGTH	\$35,000	\$17,011	\$1,677	\$33,323	\$29,432	\$5,568	\$	0.96	15.91%	736	\$45.28	4R405	0.133	5,793	43	136	SINGLE FAMILY	SINGLE FAMILY	36	
						\$628,600					\$16,779	\$	0.53	2.67%					31,799						
21063645	11696 WAYBURN	08/26/22	\$15,500	PTA	03-ARM'S LENGTH	\$15,500	\$9,014	\$1,806	\$13,694	\$13,862	\$1,638	\$	0.32	10.57%	945	\$14.49	4R406	0.116	5,053	39	130	SINGLE FAMILY	SINGLE FAMILY	9	
21057757	11814 DUCHESS	10/14/22	\$70,000	WD	03-ARM'S LENGTH	\$70,000	\$35,806	\$1,516	\$68,484	\$65,942	\$4,058	\$	0.93	5.80%	880	\$77.82	4R406	0.100	4,356	35	125	SINGLE FAMILY	SINGLE FAMILY	52	
21067293	10992 SOMERSET	04/28/22	\$105,000	WD	03-ARM'S LENGTH	\$105,000	\$53,686	\$1,797	\$103,203	\$99,787	\$5,213	\$	1.00	4.97%	958	\$107.73	4R406	0.120	5,227	40	131	SINGLE FAMILY	SINGLE FAMILY	67	
21058887	11406 ROXBURY	06/23/23	\$110,000	PTA	03-ARM'S LENGTH	\$110,000	\$54,752	\$1,808	\$108,192	\$101,815	\$8,185	\$	1.55	7.44%	1,315	\$82.28	4R406	0.121	5,271	40	132.139999	SINGLE FAMILY	SINGLE FAMILY	52	
21064846	11364 LAKEPOINTE	06/03/22	\$60,000	PTA	03-ARM'S LENGTH	\$60,000	\$27,438	\$1,239	\$58,761	\$50,383	\$9,617	\$	1.82	16.03%	824	\$71.31	4R406	0.121	5,271	40	131	SINGLE FAMILY	SINGLE FAMILY	36	
						\$360,500					\$28,712	\$	1.14	7.96%					25,178						
21078582	5000 LAFONTAINE	07/19/22	\$100,000	WD	03-ARM'S LENGTH	\$100,000	\$64,710	\$1,627	\$98,373	\$99,187	\$813	\$	0.15	0.81%	916	\$107.39	4R410	0.124	5,401	45	120	SINGLE FAMILY	SINGLE FAMILY	67	
21075538.01	6210 BLUEHILL	07/27/23	\$125,000	WD	03-ARM'S LENGTH	\$125,000	\$80,525	\$1,542	\$123,458	\$124,187	\$813	\$	0.17	0.85%	960	\$128.60	4R410	0.113	4,922	45	108	SINGLE FAMILY	SINGLE FAMILY	67	
21078877	4994 HILLCREST	07/26/22	\$185,000	WD	03-ARM'S LENGTH	\$185,000	\$118,167	\$1,568	\$183,432	\$183,332	\$1,668	\$	0.33	0.90%	1,387	\$132.25	4R410	0.115	5,009	40	135	SINGLE FAMILY	SINGLE FAMILY	80	
21078848	5245 LANNOO	01/19/23	\$150,000	WD	03-ARM'S LENGTH	\$150,000	\$95,795	\$1,673	\$148,327	\$147,991	\$2,009	\$	0.35	1.34%	1,236	\$120.01	4R410	0.131	5,706	40	143	SINGLE FAMILY	SINGLE FAMILY	67	
21077880	6201 LODIEWYCK	02/09/23	\$138,000	WD	03-ARM'S LENGTH	\$138,000	\$87,950	\$1,308	\$136,692	\$136,230	\$1,770	\$	0.41	1.28%	1,106	\$123.59	4R410	0.098	4,269	41	103	SINGLE FAMILY	SINGLE FAMILY	80	
21078239	6188 NEFF	06/08/22	\$130,000	WD	03-ARM'S LENGTH	\$130,000	\$81,660	\$1,898	\$128,102	\$125,412	\$4,588	\$	0.64	3.53%	964	\$132.89	4R410	0.165	7,187	46	156	SINGLE FAMILY	SINGLE FAMILY	67	
21078893	5278 HILLCREST	01/24/24	\$191,000	PTA	03-ARM'S LENGTH	\$191,000	\$120,693	\$1,540	\$189,460	\$187,347	\$3,653	\$	0.74	1.91%	1,672	\$113.31	4R410	0.113	4,922	40	133	SINGLE FAMILY	SINGLE FAMILY	67	
21079741-3	18980 MALLINA	08/18/23	\$116,000	WD	03-ARM'S LENGTH	\$116,000	\$71,577	\$1,780	\$114,220	\$109,744	\$6,256	\$	0.93	5.39%	959	\$119.10	4R410	0.154	6,708	132	51	SINGLE FAMILY	SINGLE FAMILY	67	
21003637-8	19165 CHESHIRE	10/31/22	\$160,000	WD	03-ARM'S LENGTH	\$160,000	\$98,738	\$1,627	\$158,273	\$152,690	\$7,310	\$	1.24	4.57%	1,266	\$125.10	4R410	0.135	5,881	53	121	SINGLE FAMILY	SINGLE FAMILY	67	
21077305	3965 HEREFORD	08/30/22	\$140,000	WD	03-ARM'S LENGTH	\$140,000	\$85,044	\$3,592	\$136,408	\$128,069	\$11,931	\$	1.44	8.52%	1,147	\$118.93	4R410	0.190	8,276	50	174	SINGLE FAMILY	SINGLE FAMILY	67	
21075842	5924 WOODHALL	09/18/23	\$120,000	WD	03-ARM'S LENGTH	\$120,000	\$72,232	\$1,693	\$118,307	\$110,910	\$9,090	\$	1.56	7.57%	1,200	\$98.59	4R410</								

21003623	19152 CHESHIRE	06/28/23	\$156,000	WD	03-ARM'S LENGTH	\$156,000	\$91,717	\$1,775	\$154,225	\$141,418	\$14,582	\$	3.52	9.35%	1,179	\$130.81	4R410	0.095	4,138	38	110	SINGLE FAMILY	SINGLE FAMILY	67
21078917	5984 HILLCREST	01/04/23	\$187,000	WD	03-ARM'S LENGTH	\$187,000	\$108,993	\$2,714	\$184,286	\$167,105	\$19,895	\$	3.71	10.64%	1,612	\$114.32	4R410	0.123	5,358	40	134	SINGLE FAMILY	SINGLE FAMILY	67
21077310.01	4162 UNIVERSITY	08/03/22	\$135,000	WD	03-ARM'S LENGTH	\$135,000	\$73,062	\$1,673	\$133,327	\$112,247	\$22,753	\$	3.99	16.85%	1,285	\$103.76	4R410	0.131	5,706	42	135	SINGLE FAMILY	SINGLE FAMILY	52
						\$3,768,000					\$246,981	\$	1.79	6.55%					137,824					
21059423	5574 MARLBOROUGH	07/08/22	\$17,000	WD	03-ARM'S LENGTH	\$17,000	\$5,424	\$1,244	\$15,756	\$16,855	\$145	\$	0.04	0.85%	1,110	\$14.19	4R412	0.085	3,703	35	106	SINGLE FAMILY	SINGLE FAMILY	9
21071244	5541 THREE MILE	07/01/22	\$194,900	WD	03-ARM'S LENGTH	\$194,900	\$91,072	\$1,732	\$193,168	\$190,897	\$4,003	\$	0.85	2.05%	1,876	\$102.97	4R413	0.108	4,704	39	120	SINGLE FAMILY	SINGLE FAMILY	67
21069206	5298 BERSHIRE	07/20/22	\$190,000	WD	03-ARM'S LENGTH	\$190,000	\$87,265	\$1,647	\$188,355	\$182,944	\$7,056	\$	1.57	3.71%	1,658	\$113.60	4R413	0.103	4,487	40	113	SINGLE FAMILY	SINGLE FAMILY	67
21071527	5926 COURVILLE	09/12/23	\$180,000	WD	03-ARM'S LENGTH	\$180,000	\$81,485	\$1,731	\$178,269	\$170,415	\$9,585	\$	2.04	5.33%	1,497	\$119.08	4R413	0.108	4,704	40	118	SINGLE FAMILY	SINGLE FAMILY	67
21071913	5540 AUDUBON	04/22/22	\$156,000	WD	03-ARM'S LENGTH	\$156,000	\$67,416	\$1,970	\$154,030	\$139,842	\$16,158	\$	2.88	10.36%	1,570	\$98.11	4R413	0.129	5,619	39	144	SINGLE FAMILY	SINGLE FAMILY	52
21069760	5742 BUCKINGHAM	09/05/23	\$160,000	WD	03-ARM'S LENGTH	\$160,000	\$69,241	\$1,681	\$158,319	\$144,359	\$15,641	\$	3.42	9.78%	1,090	\$145.25	4R413	0.105	4,574	40	114	SINGLE FAMILY	SINGLE FAMILY	67
21071192	5526 THREE MILE	06/22/23	\$177,000	WD	03-ARM'S LENGTH	\$177,000	\$77,243	\$2,319	\$174,681	\$160,094	\$16,906	\$	3.63	9.55%	1,356	\$128.82	4R413	0.107	4,661	39	120	SINGLE FAMILY	SINGLE FAMILY	67
21068735	5607 BALFOUR	09/20/23	\$150,000	WD	03-ARM'S LENGTH	\$150,000	\$62,545	\$1,874	\$148,126	\$129,639	\$20,361	\$	3.96	13.57%	1,050	\$141.07	4R413	0.118	5,140	35	146	SINGLE FAMILY	SINGLE FAMILY	67
21071659	5783 COURVILLE	05/22/23	\$172,500	WD	03-ARM'S LENGTH	\$172,500	\$73,506	\$1,714	\$170,786	\$153,402	\$19,098	\$	4.10	11.07%	1,732	\$98.61	4R413	0.107	4,661	39	120	SINGLE FAMILY	SINGLE FAMILY	52
						\$1,380,400					\$108,808	\$	2.82	7.88%					38,551					
21074004	5502 GRAYTON	07/22/22	\$167,000	WD	03-ARM'S LENGTH	\$167,000	\$115,149	\$1,712	\$165,288	\$165,844	\$1,156	\$	0.21	0.69%	1,230	\$134.38	4R414	0.124	5,401	36	150	SINGLE FAMILY	SINGLE FAMILY	80
21072829	5520 KENSINGTON	12/08/22	\$166,000	PTA	03-ARM'S LENGTH	\$166,000	\$114,214	\$1,726	\$164,274	\$164,456	\$1,544	\$	0.28	0.93%	1,456	\$112.83	4R414	0.126	5,489	39	140	SINGLE FAMILY	SINGLE FAMILY	67
21073341	5797 YORKSHIRE	03/10/23	\$198,000	PTA	03-ARM'S LENGTH	\$198,000	\$131,566	\$1,726	\$196,274	\$189,825	\$8,175	\$	1.49	4.13%	2,202	\$89.13	4R414	0.126	5,489	39	140	TWO FAMILY FLAT	TWO FAMILY	50
21073577	5274 BISHOP	11/30/22	\$210,900	WD	03-ARM'S LENGTH	\$210,900	\$140,354	\$1,523	\$209,377	\$202,969	\$7,931	\$	1.72	3.76%	1,518	\$137.93	4R414	0.106	4,617	40	116	SINGLE FAMILY	SINGLE FAMILY	80
21009248	16932 CHANDLER PARK	02/16/24	\$160,000	PTA	03-ARM'S LENGTH	\$160,000	\$105,038	\$807	\$159,193	\$152,385	\$7,616	\$	1.78	4.76%	1,230	\$129.43	4R414	0.098	4,269	38	114	SINGLE FAMILY	SINGLE FAMILY	67
21073231	5920 YORKSHIRE	10/04/22	\$160,000	MLC	03-ARM'S LENGTH	\$160,000	\$104,532	\$1,607	\$158,393	\$150,475	\$9,525	\$	1.95	5.95%	1,366	\$115.95	4R414	0.112	4,879	40	122	SINGLE FAMILY	SINGLE FAMILY	67
21073190	5100 YORKSHIRE	10/04/22	\$112,500	WD	03-ARM'S LENGTH	\$112,500	\$70,691	\$1,635	\$110,865	\$100,959	\$11,541	\$	2.32	10.26%	1,672	\$66.31	4R414	0.114	4,966	40	124	SINGLE FAMILY	SINGLE FAMILY	36
21074203	5269 GRAYTON	07/26/22	\$185,400	WD	03-ARM'S LENGTH	\$185,400	\$118,093	\$1,769	\$183,631	\$170,064	\$15,336	\$	2.67	8.27%	1,001	\$183.45	4R414	0.132	5,750	40	144	SINGLE FAMILY	SINGLE FAMILY	27220185
21009251	16910 CHANDLER PARK	10/11/23	\$195,500	WD	03-ARM'S LENGTH	\$195,500	\$125,318	\$1,412	\$194,088	\$181,149	\$14,351	\$	3.36	7.34%	1,765	\$109.96	4R414	0.098	4,269	38	114	SINGLE FAMILY	SINGLE FAMILY	67
21074026	5900 GRAYTON	04/20/23	\$185,000	PTA	03-ARM'S LENGTH	\$185,000	\$104,065	\$1,207	\$183,793	\$150,377	\$34,623	\$	5.76	18.72%	1,230	\$149.43	4R414	0.138	6,011	40	150	SINGLE FAMILY	SINGLE FAMILY	67
21073758	5229 BISHOP	01/24/24	\$215,000	PTA	03-ARM'S LENGTH	\$215,000	\$126,139	\$1,634	\$213,366	\$182,025	\$32,975	\$	6.64	15.34%	1,570	\$135.90	4R414	0.114	4,966	40	124	SINGLE FAMILY	SINGLE FAMILY	67
21073619	6014 BISHOP	12/22/22	\$220,000	WD	03-ARM'S LENGTH	\$220,000	\$129,695	\$875	\$219,125	\$188,333	\$13,667	\$	6.73	14.39%	1,696	\$129.20	4R414	0.108	4,704	40	114	SINGLE FAMILY	SINGLE FAMILY	67
						\$2,175,300					\$176,439	\$	2.90	8.11%					60,810					
21075385	3607 CADIEUX	09/08/22	\$190,000	WD	03-ARM'S LENGTH	\$190,000	\$166,468	\$2,017	\$187,983	\$179,141	\$10,859	\$	1.43	5.72%	1,433	\$131.18	4R415	0.174	7,579	68	113	SINGLE FAMILY	SINGLE FAMILY	67
21073866	3487 BISHOP	01/31/24	\$218,000	WD	03-ARM'S LENGTH	\$218,000	\$188,692	\$1,512	\$216,488	\$203,900	\$14,100	\$	2.92	6.47%	1,594	\$135.81	4R415	0.111	4,835	40	121	SINGLE FAMILY	SINGLE FAMILY	67
21073087	3472 YORKSHIRE	10/05/22	\$179,900	WD	03-ARM'S LENGTH	\$179,900	\$151,704	\$1,555	\$178,345	\$163,561	\$16,339	\$	3.38	9.08%	1,590	\$112.17	4R415	0.111	4,835	40	121	SINGLE FAMILY	SINGLE FAMILY	67
21080494	12477 E OUTER	06/01/22	\$182,000	WD	03-ARM'S LENGTH	\$182,000	\$143,560	\$1,555	\$180,445	\$154,690	\$27,310	\$	5.65	15.01%	1,255	\$143.78	4R415	0.111	4,835	40	121	SINGLE FAMILY	SINGLE FAMILY	67
21074666	4359 HARVARD	05/03/22	\$195,000	WD	03-ARM'S LENGTH	\$195,000	\$151,587	\$1,585	\$193,415	\$163,401	\$31,599	\$	6.15	16.20%	1,372	\$140.97	4R415	0.118	5,140	40	129	SINGLE FAMILY	SINGLE FAMILY	67
21074309	3855 GRAYTON	04/29/22	\$165,000	WD	03-ARM'S LENGTH	\$165,000	\$124,046	\$1,596	\$163,404	\$133,388	\$31,612	\$	6.37	19.16%	1,164	\$140.38	4R415	0.114	4,966	35	141	SINGLE FAMILY	SINGLE FAMILY	67
21074728	3445 HARVARD	11/01/22	\$190,000	MLC	03-ARM'S LENGTH	\$190,000	\$145,910	\$1,628	\$188,372	\$157,170	\$32,830	\$	6.39	17.28%	1,360	\$138.51	4R415	0.118	5,140	40	129	SINGLE FAMILY	SINGLE FAMILY	67
						\$1,319,900					\$164,651	\$	4.41	12.47%					37,331					
21054831	4115 LAKEWOOD	09/11/23	\$230,000	WD	03-ARM'S LENGTH	\$230,000	\$48,227	\$2,224	\$227,776	\$212,977	\$17,023	\$	2.59	7.40%	2,152	\$105.84	4R416	0.151	6,578	50	132	SINGLE FAMILY	SINGLE FAMILY	67
21071726	4645 COURVILLE	06/14/23	\$120,000	WD	03-ARM'S LENGTH	\$120,000	\$59,885	\$1,686	\$118,314	\$117,812	\$2,188	\$	0.46	1.82%	1,094	\$108.15	4R417	0.110	4,792	40	120	SINGLE FAMILY	SINGLE FAMILY	67
21071079	3632 THREE MILE	10/05/22	\$93,000	WD	03-ARM'S LENGTH	\$93,000	\$45,805	\$1,686	\$91,314	\$89,310	\$3,690	\$	0.77	3.97%	1,092	\$83.62	4R417	0.110	4,792	40	120	SINGLE FAMILY	SINGLE FAMILY	52
21071318	4215 THREE MILE	05/19/23	\$170,000	WD	03-ARM'S LENGTH	\$170,000	\$82,963	\$1,729	\$168,271	\$164,441	\$5,559	\$	1.16	3.27%	1,613	\$104.32	4R417	0.110	4,792	40	120	SINGLE FAMILY	SINGLE FAMILY	67
21071153	4828 THREE MILE	05/28/22	\$159,000	WD	03-ARM'S LENGTH	\$159,000	\$75,405	\$1,658	\$149,285	\$149,285	\$9,715	\$	2.03	6.11%	1,230	\$127.92	4R417	0.110	4,792	40	120	SINGLE FAMILY	SINGLE FAMILY	67
21069932	3487 BUCKINGHAM	08/25/22	\$178,500	WD	03-ARM'S LENGTH	\$178,500	\$84,964	\$1,648	\$176,852	\$168,656	\$9,844	\$	2.15	5.51%	1,651	\$107.12	4R417	0.105	4,574	40	114	SINGLE FAMILY	SINGLE FAMILY	67
21070015	4628 HAVERHILL	09/07/23	\$172,000	WD	03-ARM'S LENGTH	\$172,000	\$81,582	\$1,648	\$170,352	\$161,810	\$10,190	\$	2.23	5.92%	1,436	\$118.63	4R417	0.105	4,574	40	114	SINGLE FAMILY	SINGLE FAMILY	67
21069888	4185 BUCKINGHAM	07/01/22	\$134,500	WD	03-ARM'S LENGTH	\$134,500	\$62,619	\$1,648	\$132,852	\$123,423	\$11,077	\$	2.42	8.24%	1,152	\$115.32	4R417	0.105	4,574	40	114	SINGLE FAMILY	SINGLE FAMILY	67
						\$1,027,000					\$52,263	\$	1.59	5.09%					32,888					
21045712-3	474 TENNESSEE	09/15/23	\$110,000	PTA	03-ARM'S LENGTH	\$110,000	\$21,853	\$2,333	\$107,667	\$90,370	\$19,630	\$	2.62	17.85%	897	\$120.03	4R418	0.172	7,492	75	100	SINGLE FAMILY	SINGLE FAMILY	67
21062625.002L	272 ALTER	06/30/23	\$135,000	PTA	03-ARM'S LENGTH	\$135,000	\$68,876	\$2,279	\$132,721	\$132,400	\$2,600	\$	0.78	1.93%	1,088	\$121.99	4R422	0.077	3,354	25	135	1/2 DUPLEX	DUPLEX	67
21053535	317 EASTLAWN																							

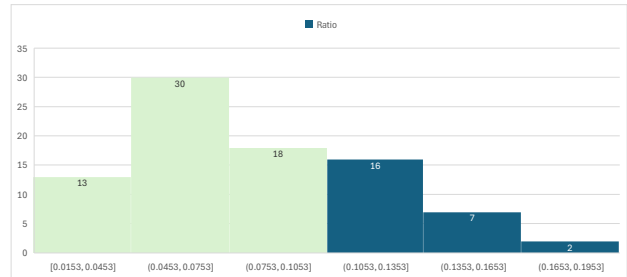
1000852	8521 LASALLE	09/07/22	\$250,000	WD	03-ARM'S LENGTH	\$250,000	\$174,023	\$3,652	\$246,348	\$237,948	\$12,052	\$	2.29	4.82%	1,637	\$150.49	5R506	0.121	5,271	45	117	SINGLE FAMILY	SINGLE FAMILY	67	
04002618.	932 EDISON	06/16/22	\$125,000	WD	03-ARM'S LENGTH	\$125,000	\$93,942	\$10,503	\$114,497	\$111,252	\$13,748	\$	2.59	11.00%	1,929	\$59.36	5R509	0.122	5,314	40	134	SINGLE FAMILY	SINGLE FAMILY	36	
04002670.	834 LONGFELLOW	09/02/22	\$215,000	WD	03-ARM'S LENGTH	\$215,000	\$149,250	\$7,264	\$207,736	\$189,315	\$25,685	\$	4.79	11.95%	2,221	\$93.53	5R509	0.123	5,358	40	134	SINGLE FAMILY	SINGLE FAMILY	52	
02001495.	140 LONGFELLOW	10/20/23	\$620,000	WD	03-ARM'S LENGTH	\$620,000	\$419,335	\$8,730	\$611,270	\$547,473	\$72,527	\$	10.88	11.70%	3,193	\$191.44	5R509	0.153	6,665	50	134	SINGLE FAMILY	SINGLE FAMILY	67	
04002601.	849 EDISON	05/31/22	\$340,000	WD	03-ARM'S LENGTH	\$340,000	\$212,044	\$6,665	\$333,335	\$273,839	\$66,161	\$	12.35	19.46%	1,947	\$171.20	5R509	0.123	5,358	40	134	SINGLE FAMILY	SINGLE FAMILY	67	
						\$1,300,000					\$178,121	\$	7.85	13.70%									22,695		
08002387.	1668 BLAINE	03/15/24	\$25,000	PTA	03-ARM'S LENGTH	\$25,000	\$8,801	\$522	\$24,478	\$23,928	\$1,072	\$	0.31	4.29%	1,926	\$12.71	5R510	0.080	3,485	35	100	TWO FAMILY FLAT	TWO FAMILY	9	
06001947.	1497 W PHILADELPHIA	06/14/23	\$195,000	WD	03-ARM'S LENGTH	\$195,000	\$58,588	\$366	\$194,634	\$168,272	\$26,728	\$	9.16	13.71%	1,484	\$131.15	5R510	0.067	2,919	30	97	SINGLE FAMILY	SINGLE FAMILY	80	
02001264.	135 W PHILADELPHIA	04/08/22	\$95,000	WD	03-ARM'S LENGTH	\$95,000	\$62,358	\$4,400	\$90,600	\$84,703	\$297	\$	0.07	0.31%	1,830	\$49.51	5R511	0.095	4,138	34	122	SINGLE FAMILY	SINGLE FAMILY	36	
4002080.001	609 PINGREE	10/11/22	\$145,000	PTA	03-ARM'S LENGTH	\$145,000	\$89,966	\$3,556	\$141,444	\$141,193	\$3,807	\$	0.98	2.63%	1,488	\$95.06	5R511	0.089	3,877	31	122	1/2 DUPLEX	ROW HOUSE	23002002.47	
02001374.	146 HAZELWOOD	12/30/22	\$285,000	WD	03-ARM'S LENGTH	\$285,000	\$171,916	\$4,508	\$280,492	\$273,542	\$11,458	\$	2.29	4.02%	2,422	\$115.61	5R511	0.115	5,009	40	125	SINGLE FAMILY	SINGLE FAMILY	80	
04002371.	639 TAYLOR	05/18/22	\$361,000	WD	03-ARM'S LENGTH	\$361,000	\$211,769	\$5,840	\$355,160	\$336,485	\$24,515	\$	3.83	6.79%	2,158	\$164.58	5R511	0.147	6,403	50	128	SINGLE FAMILY	SINGLE FAMILY	80	
						\$886,000					\$40,077	\$	2.06	4.52%									19,428		
01003223.	362 BELMONT	06/24/22	\$520,000	WD	03-ARM'S LENGTH	\$520,000	\$319,504	\$992	\$519,008	\$442,993	\$77,007	\$	14.98	14.81%	5,746	\$90.33	5R512	0.118	5,140	40	128	SINGLE FAMILY	FOUR FAMILY	67	
01002453.	96 MELBOURNE	05/02/22	\$245,000	WD	03-ARM'S LENGTH	\$245,000	\$148,809	\$969	\$244,031	\$212,719	\$32,281	\$	7.34	13.18%	2,414	\$101.09	5R514	0.101	4,400	40	110	SINGLE FAMILY	SINGLE FAMILY	67	
01001973.	402 HORTON	04/01/22	\$339,000	WD	03-ARM'S LENGTH	\$339,000	\$189,757	\$478	\$338,522	\$272,344	\$66,656	\$	22.18	19.66%	2,412	\$140.35	5R514	0.069	3,006	30	100	SINGLE FAMILY	SINGLE FAMILY	80	
08001981.	1701 VIRGINIA PARK	08/16/22	\$240,000	WD	03-ARM'S LENGTH	\$240,000	\$95,503	\$7,575	\$232,425	\$214,459	\$25,541	\$	3.66	10.64%	3,074	\$75.61	5R515	0.160	6,970	40	174	TWO FAMILY FLAT	TWO FAMILY	52	
08001970.	1613 VIRGINIA PARK	04/21/23	\$235,000	WD	03-ARM'S LENGTH	\$235,000	\$91,850	\$7,041	\$227,959	\$206,851	\$28,149	\$	4.04	11.98%	2,794	\$81.59	5R515	0.160	6,970	40	174	TWO FAMILY FLAT	SINGLE FAMILY	52	
						\$475,000					\$53,690	\$	3.85	11.30%									13,939		
08005588.	7425 POE	07/26/22	\$195,000	WD	03-ARM'S LENGTH	\$195,000	\$153,861	\$5,876	\$189,124	\$193,444	\$1,556	\$	0.30	0.80%	1,807	\$104.66	5R517	0.121	5,271	40	132	SINGLE FAMILY	SINGLE FAMILY	67	
04001764-6	739 DELAWARE	10/05/22	\$353,000	WD	03-ARM'S LENGTH	\$353,000	\$323,667	\$8,305	\$344,695	\$323,448	\$29,552	\$	5.38	8.37%	2,536	\$135.92	5R519	0.126	5,489	51	107	SINGLE FAMILY	SINGLE FAMILY	80	
08008012.	6185 ROSA PARKS	07/14/22	\$45,000	WD	03-ARM'S LENGTH	\$45,000	\$11,511	\$1,072	\$43,928	\$39,692	\$5,308	\$	0.66	11.80%	3,458	\$12.70	5R521	0.185	8,059	60	134	LARGE FLATS	FOUR FAMILY	9	
11001175-6	2706 CHARLEVOIX	06/17/22	\$194,000	OTH	03-ARM'S LENGTH	\$194,000	\$52,157	\$1,567	\$192,433	\$189,476	\$4,524	\$	0.72	2.33%	2,100	\$91.63	5R523	0.145	6,316	64	105	SINGLE FAMILY	SINGLE FAMILY	67	
17011205	3450 BALDWIN	08/15/22	\$130,000	WD	03-ARM'S LENGTH	\$130,000	\$76,015	\$3,077	\$126,923	\$126,190	\$3,810	\$	1.27	2.93%	1,294	\$98.09	5R529	0.069	3,006	30	100	SINGLE FAMILY	SINGLE FAMILY	67	
17000073.002L	7850 VAN DYKE	07/11/23	\$305,000	PTA	03-ARM'S LENGTH	\$305,000	\$431,863	\$10,526	\$294,474	\$280,331	\$24,669	\$	3.54	8.09%	2,682	\$109.80	5R530	0.160	6,970	35	197	1/2 DUPLEX	TWO FAMILY	67	
17011752	1081 BALDWIN	09/15/22	\$175,000	WD	03-ARM'S LENGTH	\$175,000	\$94,594	\$3,293	\$171,707	\$157,960	\$17,040	\$	5.29	9.74%	1,572	\$109.23	5R529	0.074	3,223	30	107	SINGLE FAMILY	SINGLE FAMILY	80	
15007453	2133 FIELD	08/11/23	\$355,000	PTA	03-ARM'S LENGTH	\$355,000	\$180,246	\$7,492	\$347,508	\$298,882	\$56,118	\$	7.49	15.81%	2,949	\$117.84	5R529	0.172	7,492	50	150	DUPLEX	SINGLE FAMILY	67	
						\$965,000					\$101,636	\$	4.91	10.53%									20,691		
17006213	3788 BURNS	01/27/23	\$160,000	WD	03-ARM'S LENGTH	\$160,000	\$49,783	\$667	\$159,333	\$152,062	\$7,938	\$	2.37	4.96%	1,524	\$104.55	5R531	0.077	3,354	30	111	SINGLE FAMILY	SINGLE FAMILY	67	
17007070	3828 IROQUOIS	06/03/22	\$175,000	WD	03-ARM'S LENGTH	\$175,000	\$55,264	\$2,424	\$172,576	\$163,591	\$11,409	\$	2.47	6.52%	1,584	\$108.95	5R531	0.106	4,617	42	110	SINGLE FAMILY	SINGLE FAMILY	67	
						\$335,000					\$19,347	\$	2.43	5.78%									7,971		
17007046	3418 IROQUOIS	07/22/22	\$549,900	WD	03-ARM'S LENGTH	\$549,900	\$554,891	\$19,984	\$529,916	\$507,502	\$42,398	\$	4.94	7.71%	2,850	\$185.94	5R532	0.197	8,581	50	171			27140185	33
19006289	474 FISKE	01/05/23	\$389,000	WD	03-ARM'S LENGTH	\$389,000	\$368,765	\$12,506	\$376,494	\$377,393	\$11,607	\$	1.29	2.98%	2,819	\$133.56	5R535	0.207	9,017	75	120	SINGLE FAMILY	SINGLE FAMILY	67	
18013692	7263 AMERICAN	05/16/23	\$155,000	WD	03-ARM'S LENGTH	\$155,000	\$32,357	\$1,340	\$153,660	\$149,841	\$5,159	\$	1.22	3.33%	1,430	\$107.45	6R602	0.097	4,225	33	128	SINGLE FAMILY	SINGLE FAMILY	67	
16002672	5301 OREGON	04/06/22	\$125,000	WD	03-ARM'S LENGTH	\$125,000	\$20,464	\$589	\$124,411	\$108,607	\$16,393	\$	4.28	13.11%	1,430	\$87.00	6R603	0.088	3,833	30	128	SINGLE FAMILY	SINGLE FAMILY	52	
14009015	5323 VINEWOOD	10/23/23	\$265,000	PTA	03-ARM'S LENGTH	\$265,000	\$137,412	\$730	\$264,270	\$231,664	\$33,336	\$	11.09	12.58%	2,479	\$106.60	6R607	0.069	3,006	30	100	TWO FAMILY FLAT	TWO FAMILY	67	
08005921.	3125 TRUMBULL	06/15/22	\$290,000	WD	03-ARM'S LENGTH	\$290,000	\$141,309	\$1,502	\$288,498	\$236,961	\$53,039	\$	8.17	18.29%	3,194	\$90.32	6R607	0.149	6,490	50	130	SINGLE FAMILY	SINGLE FAMILY	52	
						\$555,000					\$86,375	\$	9.10	15.56%									9,496		
20007346	2586 NORMAN	06/30/22	\$129,900	WD	03-ARM'S LENGTH	\$129,900	\$59,895	\$608	\$129,292	\$118,102	\$11,798	\$	3.93	9.08%	1,054	\$122.67	6R611	0.069	3,006	30	100	SINGLE FAMILY	SINGLE FAMILY	67	
20003591	8803 MASON	06/30/23	\$105,000	LCM	03-ARM'S LENGTH	\$105,000	\$46,312	\$1,087	\$103,913	\$90,090	\$14,910	\$	4.03	14.20%	1,188	\$87.47	6R611	0.085	3,703	30	123	SINGLE FAMILY	SINGLE FAMILY	52	
20006054	1330 LAWDALE	06/23/22	\$121,500	WD	03-ARM'S LENGTH	\$121,500	\$54,285	\$2,074	\$119,426	\$104,006	\$17,494	\$	4.84	14.40%	1,440	\$82.93	6R611	0.083	3,615	30	120	SINGLE FAMILY	SINGLE FAMILY	52	
						\$356,400					\$44,203	\$	4.28	12.40%									10,324		
12009624	1989 25TH	07/19/23	\$115,000	WD	03-ARM'S LENGTH	\$115,000	\$54,909	\$1,347	\$113,653	\$107,339	\$7,661	\$	1.71	6.66%	941	\$120.78	6R613	0.103	4,487	30	149	SINGLE FAMILY	SINGLE FAMILY	67	
16012885	2020 JUNCTION	07/14/23	\$145,000	PTA	03-ARM'S LENGTH	\$145,000	\$67,707	\$686	\$144,314	\$134,311	\$10,689	\$	2.58	7.37%	1,131	\$127.60	6R613	0.095	4,138	30	139	SINGLE FAMILY	SINGLE FAMILY	67	
						\$260,000					\$18,351	\$	2.13	7.06%									8,625		
08000445.	1628 LEVERETTE	12/08/23	\$142,000	PTA	03-ARM'S LENGTH	\$142,000	\$252,112	\$10,851	\$131,149	\$140,677	\$1,323	\$	0.31	0.93%	1,739	\$75.42	6R614	0.099	4,312	33	131	SINGLE FAMILY	SINGLE FAMILY	52	
18000681	7002 ARMY	09/28/22	\$400,000	WD	03-ARM'S LENGTH	\$400,000	\$192,941	\$1,265	\$398,735	\$382,587	\$17,413	\$	3.22	4.35%	4,584	\$86.98	6R615	0.124	5,401	45	120	MULTI DWELLING	FOUR FAMILY	67	

16009976	1484 FERDINAND	10/12/23	\$165,000	WD	03-ARM'S LENGTH	\$165,000	\$75,023	\$955	\$164,045	\$147,840	\$17,160	\$	4.10	10.40%	1,277	\$128.46	6R615	0.096	4,182	30	140	SINGLE FAMILY	SINGLE FAMILY	80
						\$674,000					\$43,649	\$	3.59						12,153					
20016451	232 HEIDT	08/26/22	\$237,000	WD	03-ARM'S LENGTH	\$237,000	\$67,478	\$1,645	\$235,355	\$198,292	\$38,708	\$	4.38	16.33%	2,240	\$105.07	6R619	0.203	8,843	150	61	SINGLE FAMILY	SINGLE FAMILY	67
20014268	1500 LIEBOLD	07/15/22	\$86,500	WD	03-ARM'S LENGTH	\$86,500	\$26,726	\$332	\$86,168	\$81,212	\$5,288	\$	1.43	6.11%	974	\$88.47	6R620	0.085	3,703	35	105	SINGLE FAMILY	SINGLE FAMILY	67
20013758.01	1671 LIEBOLD	03/22/24	\$91,650	PTA	03-ARM'S LENGTH	\$91,650	\$27,183	\$976	\$90,674	\$80,637	\$11,013	\$	2.11	12.02%	752	\$120.58	6R620	0.120	5,227	42	124	SINGLE FAMILY	SINGLE FAMILY	67
20013758	1621 LIEBOLD	01/16/24	\$111,750	WD	03-ARM'S LENGTH	\$111,750	\$32,354	\$976	\$110,774	\$96,548	\$15,202	\$	2.91	13.60%	935	\$118.47	6R620	0.120	5,227	42	124	SINGLE FAMILY	SINGLE FAMILY	67
						\$289,900					\$31,503	\$	2.23						14,157					
22118726	11401 BEAVERLAND	10/31/22	\$157,500	WD	03-ARM'S LENGTH	\$157,500	\$120,592	\$1,083	\$156,417	\$155,005	\$2,495	\$	0.48	1.58%	1,153	\$135.66	7R701	0.119	5,184	40	130	SINGLE FAMILY	SINGLE FAMILY	80
22118249	11404 BEAVERLAND	01/20/23	\$125,000	WD	03-ARM'S LENGTH	\$125,000	\$96,175	\$1,587	\$123,413	\$122,682	\$2,318	\$	0.49	1.85%	1,204	\$102.50	7R701	0.108	4,704	38	126	SINGLE FAMILY	SINGLE FAMILY	67
22117960	9999 BRAMELL	09/30/22	\$125,000	WD	03-ARM'S LENGTH	\$125,000	\$91,152	\$1,580	\$123,420	\$116,176	\$8,824	\$	1.88	7.06%	871	\$141.70	7R701	0.108	4,704	35	135	SINGLE FAMILY	SINGLE FAMILY	80
22117516-7	9900 BRAMELL	07/25/22	\$135,000	PTA	03-ARM'S LENGTH	\$135,000	\$87,933	\$2,263	\$132,737	\$111,115	\$23,885	\$	2.87	17.69%	966	\$137.41	7R701	0.191	8,320	70	119	SINGLE FAMILY	SINGLE FAMILY	67
						\$542,500					\$37,521	\$	1.64						22,913					
22119775-8	7677 WEST PARKWAY	11/21/22	\$240,000	WD	03-ARM'S LENGTH	\$240,000	\$166,386	\$2,190	\$237,810	\$229,324	\$10,676	\$	1.19	4.45%	2,262	\$105.13	7R702	0.206	8,973	80	112	SINGLE FAMILY	SINGLE FAMILY	67
22118124	7492 BEAVERLAND	03/21/24	\$100,000	PTA	03-ARM'S LENGTH	\$100,000	\$68,589	\$1,558	\$98,442	\$93,619	\$6,381	\$	1.26	6.38%	862	\$114.20	7R702	0.116	5,053	40	134	SINGLE FAMILY	SINGLE FAMILY	67
22115200	7251 DOLPHIN	08/25/22	\$100,500	LC	03-ARM'S LENGTH	\$100,500	\$68,649	\$1,609	\$98,991	\$93,631	\$6,869	\$	1.28	6.83%	723	\$136.78	7R702	0.123	5,358	40	134	SINGLE FAMILY	SINGLE FAMILY	67
22116085	7434 LAMPHERE	01/03/23	\$106,000	PTA	03-ARM'S LENGTH	\$106,000	\$70,892	\$1,609	\$104,391	\$96,485	\$9,515	\$	1.78	8.98%	880	\$118.63	7R702	0.123	5,358	40	134	SINGLE FAMILY	SINGLE FAMILY	67
22119797-8	7557 WEST PARKWAY	03/29/23	\$110,000	WD	03-ARM'S LENGTH	\$110,000	\$72,572	\$1,559	\$108,441	\$99,180	\$10,820	\$	2.14	9.84%	908	\$119.43	7R702	0.116	5,053	45	112	SINGLE FAMILY	SINGLE FAMILY	67
22114587	7297 ROCKDALE	10/02/23	\$139,900	WD	03-ARM'S LENGTH	\$139,900	\$91,561	\$1,995	\$138,305	\$125,651	\$14,249	\$	2.84	10.19%	909	\$152.15	7R702	0.115	5,009	40	134	SINGLE FAMILY	SINGLE FAMILY	80
22116600	7661 LAMPHERE	06/01/22	\$90,000	MLC	03-ARM'S LENGTH	\$90,000	\$53,796	\$1,609	\$88,391	\$72,887	\$17,113	\$	3.19	19.01%	1,028	\$85.98	7R702	0.123	5,358	40	134	SINGLE FAMILY	SINGLE FAMILY	52
22116777	8066 CHATHAM	05/19/22	\$135,000	WD	03-ARM'S LENGTH	\$135,000	\$85,958	\$2,317	\$132,683	\$116,817	\$18,183	\$	3.39	13.47%	979	\$135.53	7R702	0.123	5,358	40	134	SINGLE FAMILY	SINGLE FAMILY	67
22116610	7541 LAMPHERE	05/13/22	\$120,000	WD	03-ARM'S LENGTH	\$120,000	\$72,746	\$1,609	\$118,391	\$99,353	\$20,647	\$	3.85	17.21%	975	\$121.43	7R702	0.123	5,358	40	134	SINGLE FAMILY	SINGLE FAMILY	67
22116718	7240 CHATHAM	07/28/23	\$117,000	WD	03-ARM'S LENGTH	\$117,000	\$70,044	\$1,609	\$115,391	\$95,580	\$21,420	\$	4.00	18.31%	725	\$159.16	7R702	0.123	5,358	40	134	SINGLE FAMILY	SINGLE FAMILY	67
22119755-6	7765 WEST PARKWAY	07/22/22	\$125,000	WD	03-ARM'S LENGTH	\$125,000	\$76,995	\$1,405	\$123,595	\$105,573	\$15,501	\$	2.56	11.23%	946	\$130.65	7R702	0.103	4,487	40	112	SINGLE FAMILY	SINGLE FAMILY	67
						\$1,383,400					\$155,301	\$	2.56						60,723					
22101963	12145 STOUT	07/22/22	\$89,900	WD	03-ARM'S LENGTH	\$89,900	\$50,082	\$1,189	\$88,711	\$89,548	\$352	\$	0.08	0.39%	846	\$104.86	7R703	0.106	4,617	35	128	SINGLE FAMILY	SINGLE FAMILY	67
22087094	10000 PIEDMONT	03/13/23	\$73,500	WD	03-ARM'S LENGTH	\$73,500	\$41,474	\$2,052	\$71,448	\$71,676	\$1,824	\$	0.30	2.48%	861	\$82.98	7R704	0.140	6,098	46	133	SINGLE FAMILY	SINGLE FAMILY	52
22101710	9355 PIERSON	09/14/22	\$89,900	WD	03-ARM'S LENGTH	\$89,900	\$49,939	\$1,440	\$88,460	\$88,180	\$1,720	\$	0.30	1.91%	743	\$119.06	7R704	0.131	5,706	45	126	SINGLE FAMILY	SINGLE FAMILY	67
22105938	9317 BRAILE	02/29/24	\$80,000	PTA	03-ARM'S LENGTH	\$80,000	\$43,985	\$1,484	\$78,516	\$77,275	\$2,725	\$	0.41	3.41%	973	\$80.69	7R704	0.152	6,621	50	132	SINGLE FAMILY	SINGLE FAMILY	52
22077634	8838 PENROD	03/08/24	\$55,000	PTA	03-ARM'S LENGTH	\$55,000	\$30,171	\$1,360	\$53,640	\$52,384	\$2,616	\$	0.52	4.76%	876	\$61.23	7R704	0.116	5,053	41	123	SINGLE FAMILY	SINGLE FAMILY	36
22107168	9375 PIERSON	04/05/22	\$83,900	PTA	03-ARM'S LENGTH	\$83,900	\$46,292	\$2,339	\$81,561	\$79,915	\$3,985	\$	0.70	4.75%	998	\$81.72	7R704	0.130	5,663	45	126	SINGLE FAMILY	SINGLE FAMILY	52
22086523	11361 WARWICK	08/15/23	\$85,000	WD	03-ARM'S LENGTH	\$85,000	\$44,755	\$1,457	\$83,543	\$78,724	\$6,276	\$	1.08	7.38%	840	\$99.46	7R704	0.134	5,837	40	145	SINGLE FAMILY	SINGLE FAMILY	52
22004169-70	19330 CHICAGO	07/06/23	\$80,000	WD	03-ARM'S LENGTH	\$80,000	\$41,143	\$1,211	\$78,789	\$72,604	\$7,396	\$	1.68	9.25%	909	\$86.68	7R704	0.101	4,400	40	110	SINGLE FAMILY	SINGLE FAMILY	52
						\$547,300					\$26,544	\$	0.67						39,378					
22088103	7408 GRANDVILLE	10/04/22	\$70,000	WD	03-ARM'S LENGTH	\$70,000	\$37,240	\$1,466	\$68,534	\$68,929	\$1,071	\$	0.19	1.53%	734	\$93.37	7R705	0.128	5,576	40	139	SINGLE FAMILY	SINGLE FAMILY	52
22075905	7691 ASHTON	02/29/24	\$81,000	PTA	03-ARM'S LENGTH	\$81,000	\$42,552	\$1,411	\$79,589	\$79,270	\$1,730	\$	0.34	2.14%	931	\$85.49	7R705	0.118	5,140	40	128	SINGLE FAMILY	SINGLE FAMILY	52
22093512	6044 PLAINVIEW	12/14/22	\$42,000	PTA	03-ARM'S LENGTH	\$42,000	\$21,678	\$1,268	\$40,732	\$39,326	\$2,674	\$	0.57	6.37%	688	\$59.20	7R705	0.107	4,661	35	133	SINGLE FAMILY	SINGLE FAMILY	36
22076099	6738 ROSEMONT	09/22/22	\$73,000	WD	03-ARM'S LENGTH	\$73,000	\$37,570	\$1,407	\$71,593	\$69,678	\$3,322	\$	0.65	4.55%	1,038	\$68.97	7R705	0.117	5,097	40	128	SINGLE FAMILY	SINGLE FAMILY	52
22001772-3	18600 TIREMAN	07/28/22	\$99,000	WD	03-ARM'S LENGTH	\$99,000	\$51,504	\$1,913	\$97,087	\$95,551	\$3,449	\$	0.75	3.44%	766	\$126.75	7R705	0.106	4,617	43	107	SINGLE FAMILY	SINGLE FAMILY	67
22077409	6125 ROSEMONT	08/05/22	\$75,000	WD	03-ARM'S LENGTH	\$75,000	\$38,247	\$1,439	\$73,561	\$70,921	\$4,079	\$	0.76	3.48%	732	\$100.49	7R705	0.123	5,358	42	128	SINGLE FAMILY	SINGLE FAMILY	52
22084226	7332 ARTESIAN	04/06/22	\$21,000	WD	03-ARM'S LENGTH	\$21,000	\$10,246	\$1,427	\$19,573	\$16,992	\$4,008	\$	0.81	19.08%	1,094	\$17.89	7R705	0.114	4,966	35	142	SINGLE FAMILY	SINGLE FAMILY	9
22092935	7707 AUBURN	10/12/22	\$85,000	WD	03-ARM'S LENGTH	\$85,000	\$42,854	\$1,308	\$83,692	\$80,050	\$4,950	\$	1.06	5.82%	1,096	\$76.36	7R705	0.107	4,661	35	133	SINGLE FAMILY	SINGLE FAMILY	52
22089205	6880 WESTWOOD	04/01/22	\$110,000	LC	03-ARM'S LENGTH	\$110,000	\$55,914	\$1,209	\$108,791	\$105,405	\$4,595	\$	1.08	4.18%	1,059	\$102.73	7R705	0.098	4,269	35	122	SINGLE FAMILY	SINGLE FAMILY	67
22090572	8290 MINOCK	12/18/23	\$103,000	WD	03-ARM'S LENGTH	\$103,000	\$51,748	\$1,478	\$101,522	\$96,859	\$6,141	\$	1.08	5.96%	1,005	\$101.02	7R705	0.130	5,663	45	126	SINGLE FAMILY	SINGLE FAMILY	67
22086899	6856 PIEDMONT	07/21/23	\$109,000	WD	03-ARM'S LENGTH	\$109,000	\$54,905	\$1,417	\$107,583	\$103,060	\$5,940	\$	1.15	5.45%	954	\$112.77	7R705	0.119	5,184	40	130	SINGLE FAMILY	SINGLE FAMILY	67
22106114	7248 PIERSON	06/29/22	\$115,000	WD	03-ARM'S LENGTH	\$115,000	\$58,417	\$1,827	\$113,173	\$109,037	\$5,963	\$	1.33	5.19%	1,028	\$110.09	7R705	0.103	4,487	35	128	SINGLE FAMILY	SINGLE FAMILY	67
22085521.007L	6861 ARTESIAN	04/10/22	\$131,000	PTA	03-ARM'S LENGTH	\$131,000	\$64,436	\$1,656	\$129,344	\$120,963	\$10,037	\$	1.42	7.66%	1,032	\$125.33	7R705	0.162	7,057	55	128	SINGLE FAMILY	SINGLE FAMILY	67
22089044	6549 GRANDVILLE	03/08/24	\$85,000	PTA	03-ARM'S LENGTH	\$85,000	\$40,701	\$646	\$84,354	\$77,177	\$7,823	\$	1.83	9.20%	813	\$103.76	7R705	0.098	4,269	35	122	SINGLE FAMILY		

22045996	9924 SUSSEX	05/13/22	\$105,000	WD	03-ARM'S LENGTH	\$105,000	\$40,850	\$1,379	\$103,621	\$86,559	\$18,441	\$	4.87	17.56%	800	\$129.53	7R711	0.087	3,790	35	108	SINGLE FAMILY	SINGLE FAMILY	67
22040481	8876 MARLOWE	04/01/22	\$105,000	WD	03-ARM'S LENGTH	\$105,000	\$45,698	\$2,025	\$102,975	\$99,938	\$5,062	\$	1.11	4.82%	1,062	\$96.96	7R712	0.105	4,574	40	115	SINGLE FAMILY	SINGLE FAMILY	67
22038662-3	8131 STRATHMOOR	03/10/23	\$82,000	WD	03-ARM'S LENGTH	\$82,000	\$42,103	\$1,636	\$80,364	\$78,273	\$3,727	\$	0.67	4.55%	722	\$111.31	7R713	0.127	5,532	40	148	SINGLE FAMILY	SINGLE FAMILY	67
22034531	14044 ARDMORE	01/15/24	\$105,000	MLC	03-ARM'S LENGTH	\$105,000	\$26,312	\$1,368	\$103,632	\$85,718	\$19,282	\$	4.26	18.36%	1,296	\$79.96	7R714	0.104	4,530	40	113	SINGLE FAMILY	SINGLE FAMILY	52
16041005	13120 GRIGGS	01/10/24	\$120,000	WD	03-ARM'S LENGTH	\$120,000	\$22,602	\$1,004	\$118,996	\$100,925	\$19,075	\$	4.71	15.90%	1,300	\$91.54	7R717	0.093	4,051	40	101	SINGLE FAMILY	SINGLE FAMILY	52
22024637	11366 WARD	08/08/22	\$91,000	WD	03-ARM'S LENGTH	\$91,000	\$28,897	\$1,637	\$89,363	\$89,085	\$1,915	\$	0.38	2.10%	942	\$94.87	7R718	0.115	5,009	40	125	SINGLE FAMILY	SINGLE FAMILY	52
22029396	9903 HARTWELL	09/22/22	\$109,000	WD	03-ARM'S LENGTH	\$109,000	\$32,185	\$1,032	\$107,968	\$101,807	\$7,193	\$	1.44	6.60%	1,181	\$91.42	7R718	0.115	5,009	40	125	SINGLE FAMILY	SINGLE FAMILY	52
			\$200,000								\$9,108	\$	0.91	4.55%									10,019	
18016583-4	8144 MORROW	06/29/23	\$135,000	WD	03-ARM'S LENGTH	\$135,000	\$74,093	\$3,398	\$131,612	\$132,159	\$2,841	\$	0.30	2.10%	1,085	\$121.30	7R719	0.220	9,583	80	120	SINGLE FAMILY	SINGLE FAMILY	67
22021940	9111 APPOLINE	11/30/22	\$132,900	PTA	03-ARM'S LENGTH	\$132,900	\$70,980	\$1,740	\$131,160	\$129,421	\$3,479	\$	0.77	2.62%	1,230	\$106.63	7R719	0.104	4,530	35	130	SINGLE FAMILY	SINGLE FAMILY	67
18014640	9044 NORTHLAWN	12/30/22	\$100,000	QCD	03-ARM'S LENGTH	\$100,000	\$52,534	\$1,643	\$98,357	\$95,123	\$4,877	\$	1.11	4.88%	843	\$116.67	7R719	0.101	4,400	40	110	SINGLE FAMILY	SINGLE FAMILY	67
22027659	8299 BINGHAM	08/12/22	\$120,000	PTA	03-ARM'S LENGTH	\$120,000	\$62,037	\$1,806	\$118,194	\$112,581	\$7,419	\$	1.55	6.18%	946	\$124.94	7R719	0.110	4,792	40	120	SINGLE FAMILY	SINGLE FAMILY	67
18016616	8219 MORROW	12/19/22	\$120,000	PTA	03-ARM'S LENGTH	\$120,000	\$61,372	\$1,806	\$118,194	\$111,338	\$8,662	\$	1.81	7.22%	1,331	\$88.80	7R719	0.110	4,792	40	120	SINGLE FAMILY	SINGLE FAMILY	52
22020785-6	8880 APPOLINE	09/05/23	\$157,000	WD	03-ARM'S LENGTH	\$157,000	\$79,010	\$3,816	\$153,184	\$140,550	\$16,450	\$	1.87	10.48%	1,250	\$122.55	7R719	0.202	8,799	70	125	INCOME BUNGALOW	INCOME BUNGALOW	67
			\$764,900								\$43,728	\$	1.19	5.72%									36,895	
16025219	3303 OAKMAN	11/29/22	\$210,000	WD	03-ARM'S LENGTH	\$210,000	\$106,060	\$2,089	\$207,911	\$202,673	\$7,327	\$	1.41	3.49%	1,770	\$117.46	7R721	0.119	5,184	45	115	SINGLE FAMILY	SINGLE FAMILY	67
16021055	12672 MONICA	07/06/22	\$73,900	WD	03-ARM'S LENGTH	\$73,900	\$18,339	\$828	\$73,072	\$62,989	\$10,911	\$	2.88	14.76%	1,948	\$37.51	7R722	0.087	3,790	35	108	TWO FAMILY FLAT	TWO FAMILY	52
14012164	13120 BROADSTREET	10/09/23	\$275,000	WD	03-ARM'S LENGTH	\$275,000	\$113,708	\$2,773	\$272,227	\$267,959	\$7,041	\$	1.06	2.56%	1,686	\$161.46	7R723	0.152	6,621	48	138	SINGLE FAMILY	SINGLE FAMILY	67
14004821	4269 FULLERTON	06/06/23	\$205,000	WD	03-ARM'S LENGTH	\$205,000	\$82,030	\$2,233	\$202,767	\$192,746	\$12,254	\$	2.36	5.98%	1,736	\$116.80	7R723	0.119	5,184	40	130	SINGLE FAMILY	SINGLE FAMILY	67
14004863	4260 FULLERTON	07/14/22	\$286,000	WD	03-ARM'S LENGTH	\$286,000	\$113,083	\$2,233	\$283,767	\$267,754	\$18,246	\$	3.52	6.38%	2,298	\$123.48	7R723	0.119	5,184	40	130	SINGLE FAMILY	SINGLE FAMILY	67
			\$766,000								\$37,541	\$	2.21	4.90%									16,988	
16018333	11359 NARDIN	06/14/22	\$125,000	WD	03-ARM'S LENGTH	\$125,000	\$23,204	\$1,542	\$123,458	\$112,238	\$12,762	\$	2.66	10.21%	1,104	\$111.83	7R724	0.110	4,792	40	120	SINGLE FAMILY	SINGLE FAMILY	67
14012084	11404 BROADSTREET	10/31/22	\$89,900	WD	03-ARM'S LENGTH	\$89,900	\$15,810	\$1,815	\$88,085	\$72,513	\$17,387	\$	2.64	19.34%	934	\$94.31	7R724	0.151	6,578	53	125	SINGLE FAMILY	SINGLE FAMILY	52
			\$214,900								\$30,149	\$	2.65	14.03%									11,369	

Allocation Analysis

ECF	Neighborhood	# sales	\$/sqft	Ratio	SP/sq.ft.
5R529	5R529-ISLANDVIEW A.B.(3141A)	4	\$ 4.91	1.53%	\$ 57.00
1R112	1R112-SOUTH OF SIX-GROUP A (8012A)	4	\$ 0.31	2.42%	\$ 55.45
4R405	4R405-MOROSS-MORANG-GROUP A (2085A)	6	\$ 0.53	2.67%	\$ 57.67
1R136	1R136-SCHOOLCRAFT-196 DIST9-GROUP B (9031B)	2	\$ 0.82	2.82%	\$ 67.44
2R220	2R220-HARMONY VILLAGE-GROUP D (9042D)	2	\$ 1.08	2.86%	\$ 58.10
2R204	2R204-SCHULZE-GROUP D (0040D)	3	\$ 0.91	2.92%	\$ 71.29
7R710	7R710-WARREN AVE COMMUNITY-GROUP B (7185B)	2	\$ 0.90	3.59%	\$ 50.91
1R126	1R126-ROSEDALE PARK-GROUP A (8025A)	4	\$ 1.25	3.59%	\$ 125.42 x
3R307	3R307-BUTLER - PERSHING (1036A)	4	\$ 0.74	4.08%	\$ 47.07
2R213	2R213-WINSHIP-GROUP A (9035A)	7	\$ 1.11	4.13%	\$ 77.09
2R203	2R203-SCHAEFER-TRI-POINT-GREENWICH (0033A)	19	\$ 1.10	4.23%	\$ 88.56
1R119	1R119-BRIGHTMOOR-GROUP A (8015A)	4	\$ 0.80	4.52%	\$ 60.10
5R511	5R511-PIETY HILL-GROUP A (4107A)	4	\$ 2.06	4.52%	\$ 67.14
1R134	1R134-GRANDMONT-GROUP A (9028A)	7	\$ 1.01	4.57%	\$ 97.50
1R118	1R118-HUBBELL-PURITAN-GROUP A (9020A)	3	\$ 1.33	4.77%	\$ 62.01
2R201	2R201-GREENFIELD-GROUP A (9032A)	10	\$ 1.04	4.78%	\$ 65.14
2R222	2R222-HARMONY VILLAGE GROUP A (9042A)	5	\$ 1.09	4.85%	\$ 51.67
7R704	7R704-FRANKLIN PARK-GROUP A (7180A)	7	\$ 0.67	4.85%	\$ 57.62
7R723	7R723-RUSSELL WOODS-GROUP A (6200A)	3	\$ 2.21	4.90%	\$ 49.71
1R135	1R135-GREENFIELD-GRANDRIVER-GROUP A (9029A)	3	\$ 1.59	4.90%	\$ 54.12
4R417	4R417-MORNINGSIDE-GROUP B (3096B)	7	\$ 1.59	5.09%	\$ 51.20
4R401	4R401-LASALLE - GRATIOT (2081A)	5	\$ 1.02	5.26%	\$ 43.36
7R719	7R719-AVIATION SUB-GROUP A (7192A)	6	\$ 1.19	5.72%	\$ 56.35
5R531	5R531-PINGREE PARK-GROUP A (3140A)	2	\$ 2.43	5.78%	\$ 33.07
1R129	1R129-CASTLE ROUGE-GROUP A (8017A)	3	\$ 1.35	6.02%	\$ 75.22
1R125	1R125-WESTWOOD PARK-GROUP B (8026B)	4	\$ 1.98	6.16%	\$ 71.64
5R501	5R501-DEXTER-LINWOOD (6100A)	4	\$ 2.83	6.25%	\$ 23.53
4R423	4R423-VICTORIA PARK (3100A)	4	\$ 2.83	6.25%	\$ 140.33 x
2R223	2R223-FITZGERALD GROUP C.D.(0043C)	14	\$ 1.84	6.44%	\$ 55.33
1R121	1R121-CRARY/ST MARYS-GROUP B (9019B)	3	\$ 1.97	6.47%	\$ 59.97
6R615	6R615-SOUTHWEST DETROIT-GROUP A (5158A)	3	\$ 3.59	6.48%	\$ 46.29
4R410	4R410-CORNERSTONE VILLAGE-GROUP A (3098A)	26	\$ 1.79	6.55%	\$ 68.30
1R117	1R117-CRARY/ST MARYS-GROUP A (9019A)	11	\$ 1.69	6.69%	\$ 70.85
1R101	1R101-FIVE POINTS-GROUP A (8001A)	3	\$ 1.23	6.72%	\$ 59.79
7R701	7R701-WEST OUTER DRIVE-GROUP A (7175A)	4	\$ 1.64	6.92%	\$ 84.57
6R613	6R613-SOUTHWEST DETROIT-GROUP F (5158F)	2	\$ 2.13	7.06%	\$ 49.93
1R132	1R132-GRANDMONT #1-GROUP A (8027A)	9	\$ 2.13	7.13%	\$ 109.64
4R422	4R422-JEFFERSON CHALMERS-GROUP A (3099A)	4	\$ 2.59	7.15%	\$ 53.44
2R215	2R215-UNIVERSITY DISTRICT-GROUP A (0049A)	5	\$ 4.19	7.19%	\$ 150.36 x
1R105	1R105-OHAIR PARK-GROUP A (8005A)	2	\$ 1.58	7.24%	\$ 64.93
1R104	1R104-EVERGREEN LAHSER 7/8-GROUP A (8004A)	8	\$ 1.67	7.35%	\$ 79.26
1R120	1R120-MINOCK PARK-GROUP A (8024A)	5	\$ 1.90	7.40%	\$ 75.43
5R504	5R504-BOSTON EDISON-GROUP A (6102A)	5	\$ 4.04	7.52%	\$ 126.29 x
2R207	2R207-PEMBROKE-GROUP C (0039C)	3	\$ 1.28	7.54%	\$ 79.49
2R214	2R214-SCHULZE - BAGLEY A.B.(0040A)	63	\$ 3.01	7.68%	\$ 87.14
7R708	7R708-JOY COMMUNITY-GROUP A (7182A)	4	\$ 1.41	7.75%	\$ 45.71
1R109	1R109-EVERGREEN-OUTER DRIVE-GROUP A (8009A)	19	\$ 1.95	7.75%	\$ 76.89
4R413	4R413-MORNINGSIDE-GROUP A (3096A)	8	\$ 2.82	7.88%	\$ 46.81
4R406	4R406-DENBY - YORKSHIRE (2086A)	5	\$ 1.14	7.96%	\$ 55.77
2R205	2R205-PEMBROKE-GROUP A (0039A)	15	\$ 1.67	8.01%	\$ 58.40
7R705	7R705-WARRENDALE-GROUP A (7183A)	21	\$ 1.47	8.03%	\$ 53.55
4R414	4R414-EAST ENGLISH VILLAGE-GROUP B (3097B)	12	\$ 2.90	8.11%	\$ 78.27
1R110	1R110-THE EYE-GROUP A (8010A)	6	\$ 1.40	8.53%	\$ 74.14
2R221	2R221-FITZGERALD-GROUP A (0043A)	6	\$ 3.23	8.61%	\$ 56.93
1R115	1R115-MILLER GROVE-GROUP A (8014A)	3	\$ 3.07	8.67%	\$ 59.36
3R313	3R313-KRAINZ WOODS-GROUP A (1067A)	3	\$ 1.72	8.70%	\$ 30.06
1R122	1R122-BELMONT-GROUP A (9021A)	4	\$ 1.82	8.99%	\$ 50.09
1R103	1R103-BERG-LAHSER-GROUP A (8003A)	5	\$ 1.55	9.25%	\$ 73.03
3R310	3R310-BUFFALO-GROUP A (1069A)	16	\$ 2.70	9.68%	\$ 52.41
2R212	2R212-COLLEGE PARK-GROUP A (9034A)	17	\$ 2.49	10.00%	\$ 72.54
1R116	1R116-NORTH ROSEDALE PARK-GROUP A (8018A)	8	\$ 3.27	10.32%	\$ 114.94 x
3R306	3R306-CAMPALU/BANGLATOWN-GROUP A (1062A)	4	\$ 4.88	10.55%	\$ 35.52
6R620	6R620-BOYNTON GROUP A.C.D (5174A)	3	\$ 2.33	10.87%	\$ 34.28
7R702	7R702-FAR WEST DETROIT-GROUP A (7176A)	11	\$ 2.56	11.23%	\$ 79.54
5R515	5R515-WEST VIRGINIA PARK-GROUP A (6110A)	2	\$ 3.85	11.30%	\$ 34.71
3R325	3R325-REGENT PARK-GROUP B (2079B)	2	\$ 2.00	11.54%	\$ 41.94
1R107	1R107-MELVERN HILL-GROUP A (8006A)	2	\$ 3.03	12.06%	\$ 66.24
2R208	2R208-GREEN ACRES-GROUP A (0044A)	6	\$ 4.72	12.19%	\$ 130.72 x
6R611	6R611-SPRINGWELLS-GROUP A (5157A)	4	\$ 4.28	12.40%	\$ 45.93
2R225	2R225-MARTIN - PILGRIM - DEXTER (0053A)	7	\$ 4.63	12.40%	\$ 48.50
1R114	1R114-RIVERDALE-GROUP B (8013B)	2	\$ 3.61	12.44%	\$ 51.01
4R415	4R415-EAST ENGLISH VILLAGE-GROUP A (3097A)	7	\$ 4.41	12.47%	\$ 114.61 x
2R202	2R202-GREENFIELD-GROUP B (9032B)	4	\$ 3.42	12.55%	\$ 69.55
5R510	5R510-HERMAN - LASALLE (6106A)	2	\$ 4.34	12.64%	\$ 27.27
7R706	7R706-SOUTHFIELD PLYMOUTH-GROUP A (7179A)	2	\$ 1.72	12.91%	\$ 58.56
3R323	3R323-REGENT PARK-GROUP A (2079A)	2	\$ 1.93	13.00%	\$ 59.55
7R709	7R709-WARREN AVE COMMUNITY-GROUP A (7185A)	2	\$ 2.75	13.23%	\$ 51.43
5R509	5R509-GATEWAY COMMUNITY-GROUP C (4101C)	4	\$ 7.85	13.70%	\$ 102.98 x
2R209	2R209-SHERWOOD FOREST-GROUP A (0045A)	2	\$ 8.34	13.89%	\$ 174.39 x
7R724	7R724-NARDIN PARK AC (6201A)	2	\$ 2.65	14.03%	\$ 17.18
3R311	3R311-FARWELL-GROUP C (1065C)	2	\$ 3.44	14.38%	\$ 48.98
5R502	5R502-PETOSKEY - JAMISON - H. KIEFER (6104A)	2	\$ 4.85	14.63%	\$ 24.24
6R607	6R607-CORE CITY - NORTH CORKTOWN (5156A)	2	\$ 9.10	15.56%	\$ 43.43
1R108	1R108-BENTLER-PICKFORD-GROUP A (8008A)	2	\$ 1.33	15.99%	\$ 57.09
5R514	5R514-NORTH - MILWAUKEE - MEDBURY (4120A)	2	\$ 13.36	16.94%	\$ 73.85
3R320	3R320-MOUNT OLIVET (2076A)	2	\$ 4.77	17.07%	\$ 48.46



2025 RESIDENTIAL LAND RATIOS CALCULATIONS

ECF Neighborhood		CURRENT: Improved Parcels					5% RATIO				
		2024 TCV	Land Size	Land TCV	Ratio	TCV/sq.ft.	2024 TCV	Land Size	Land TCV	Ratio	TCV/sq.ft.
1R101	1R101-FIVE POINTS-GROUP A (8001A)	\$ 29,915,024	3,173,963	\$ 495,204	0.02	\$ 0.16	\$ 29,915,024	3,173,963	\$ 1,495,751	0.05	\$ 0.47
1R102	1R102-FIVE POINTS GROUP B.C.(8001B)	\$ 19,922,191	4,270,632	\$ 313,525	0.02	\$ 0.07	\$ 19,922,191	4,270,632	\$ 996,110	0.05	\$ 0.23
1R103	1R103-BERG-LAHSER-GROUP A (8003A)	\$ 125,956,546	9,529,582	\$ 1,857,916	0.01	\$ 0.19	\$ 125,956,546	9,529,582	\$ 6,297,827	0.05	\$ 0.66
1R104	1R104-EVERGREEN LAHSER 7/8-GROUP A (8004A)	\$ 243,423,589	15,691,200	\$ 3,409,424	0.01	\$ 0.22	\$ 243,423,589	15,691,200	\$ 12,171,179	0.05	\$ 0.78
1R105	1R105-OHAIR PARK-GROUP A (8005A)	\$ 125,715,278	10,574,726	\$ 1,776,543	0.01	\$ 0.17	\$ 125,715,278	10,574,726	\$ 6,285,764	0.05	\$ 0.59
1R106	1R106-SEVEN MILE-ROUGE-GROUP A (8002A)	\$ 40,415,511	3,648,712	\$ 477,573	0.01	\$ 0.13	\$ 40,415,511	3,648,712	\$ 2,020,776	0.05	\$ 0.55
1R107	1R107-MELVERN HILL-GROUP A (8006A)	\$ 28,612,441	2,610,084	\$ 376,455	0.01	\$ 0.14	\$ 28,612,441	2,610,084	\$ 1,430,622	0.05	\$ 0.55
1R108	1R108-BENTLER-PICKFORD-GROUP A (8008A)	\$ 107,220,899	11,975,378	\$ 1,764,482	0.02	\$ 0.15	\$ 107,220,899	11,975,378	\$ 5,361,045	0.05	\$ 0.45
1R109	1R109-EVERGREEN-OUTER DRIVE-GROUP A (8009A)	\$ 222,164,263	13,153,483	\$ 2,766,152	0.01	\$ 0.21	\$ 222,164,263	13,153,483	\$ 11,108,213	0.05	\$ 0.84
1R110	1R110-THE EYE-GROUP A (8010A)	\$ 66,633,008	6,335,902	\$ 761,587	0.01	\$ 0.12	\$ 66,633,008	6,335,902	\$ 3,331,650	0.05	\$ 0.53
1R111	1R111-OAK GROVE-GROUP A (8011A)	\$ 11,432,657	1,411,829	\$ 125,394	0.01	\$ 0.09	\$ 11,432,657	1,411,829	\$ 571,633	0.05	\$ 0.40
1R112	1R112-SOUTH OF SIX-GROUP A (8012A)	\$ 29,011,901	4,077,530	\$ 430,979	0.01	\$ 0.11	\$ 29,011,901	4,077,530	\$ 1,450,595	0.05	\$ 0.36
1R113	1R113-RIVERDALE-GROUP A (8013A)	\$ 26,991,237	5,261,567	\$ 605,202	0.02	\$ 0.12	\$ 26,991,237	5,261,567	\$ 1,349,562	0.05	\$ 0.26
1R114	1R114-RIVERDALE-GROUP B (8013B)	\$ 43,814,303	3,840,178	\$ 2,153,160	0.05	\$ 0.56	\$ 43,814,303	3,840,178	\$ 2,190,715	0.05	\$ 0.57
1R115	1R115-MILLER GROVE-GROUP A (8014A)	\$ 38,258,678	2,278,074	\$ 462,091	0.01	\$ 0.20	\$ 38,258,678	2,278,074	\$ 1,912,934	0.05	\$ 0.84
1R116	1R116-NORTH ROSEDALE PARK-GROUP A (8018A)	\$ 273,945,817	8,881,864	\$ 3,633,686	0.01	\$ 0.41	\$ 273,945,817	8,881,864	\$ 13,697,291	0.05	\$ 1.54
1R117	1R117-CRARY/ST MARYS-GROUP A (9019A)	\$ 139,621,919	8,010,762	\$ 1,614,359	0.01	\$ 0.20	\$ 139,621,919	8,010,762	\$ 6,981,096	0.05	\$ 0.87
1R118	1R118-HUBBELL-PURITAN-GROUP A (9020A)	\$ 92,261,778	5,669,731	\$ 1,219,349	0.01	\$ 0.22	\$ 92,261,778	5,669,731	\$ 4,613,089	0.05	\$ 0.81
1R119	1R119-BRIGHTMOOR-GROUP A (8015A)	\$ 96,681,304	9,120,485	\$ 1,492,925	0.02	\$ 0.16	\$ 96,681,304	9,120,485	\$ 4,834,065	0.05	\$ 0.53
1R120	1R120-MINOCK PARK-GROUP A (8024A)	\$ 54,563,590	3,209,430	\$ 601,647	0.01	\$ 0.19	\$ 54,563,590	3,209,430	\$ 2,728,180	0.05	\$ 0.85
1R121	1R121-CRARY/ST MARYS-GROUP B (9019B)	\$ 114,040,659	8,551,884	\$ 1,457,367	0.01	\$ 0.17	\$ 114,040,659	8,551,884	\$ 5,702,033	0.05	\$ 0.67
1R122	1R122-BELMONT-GROUP A (9021A)	\$ 66,957,896	5,388,545	\$ 1,037,584	0.02	\$ 0.19	\$ 66,957,896	5,388,545	\$ 3,347,895	0.05	\$ 0.62
1R123	1R123-ELIZA HOWELL-GROUP A (8016A)	\$ 44,759,700	5,005,760	\$ 582,758	0.01	\$ 0.12	\$ 44,759,700	5,005,760	\$ 2,237,985	0.05	\$ 0.45
1R124	1R124-BRIGHTMOOR-GROUP D.E. (8015D)	\$ 27,680,453	4,876,324	\$ 772,218	0.03	\$ 0.16	\$ 27,680,453	4,876,324	\$ 1,384,023	0.05	\$ 0.28
1R125	1R125-WESTWOOD PARK-GROUP B (8026B)	\$ 34,542,511	1,960,605	\$ 535,995	0.02	\$ 0.27	\$ 34,542,511	1,960,605	\$ 1,727,126	0.05	\$ 0.88
1R126	1R126-ROSEDALE PARK-GROUP A (8025A)	\$ 234,184,205	7,294,156	\$ 2,793,784	0.01	\$ 0.38	\$ 234,184,205	7,294,156	\$ 11,709,210	0.05	\$ 1.61
1R127	1R127-GRAND RIVER-ST MARYS-GROUP A (9022A)	\$ 58,173,930	4,282,755	\$ 767,835	0.01	\$ 0.18	\$ 58,173,930	4,282,755	\$ 2,908,697	0.05	\$ 0.68
1R128	1R128-HUBBELL-LYNDON-GROUP A (9023A)	\$ 91,407,489	7,420,355	\$ 1,582,533	0.02	\$ 0.21	\$ 91,407,489	7,420,355	\$ 4,570,374	0.05	\$ 0.62
1R129	1R129-CASTLE ROUGE-GROUP A (8017A)	\$ 60,383,315	4,305,347	\$ 784,761	0.01	\$ 0.18	\$ 60,383,315	4,305,347	\$ 3,019,166	0.05	\$ 0.70
1R130	1R130-BRIGHTMOOR-GROUP H (8015H)	\$ 7,600,703	1,363,114	\$ 174,214	0.02	\$ 0.13	\$ 7,600,703	1,363,114	\$ 380,035	0.05	\$ 0.28
1R131	1R131-WESTWOOD PARK-GROUP A (8026A)	\$ 9,221,151	1,304,661	\$ 153,834	0.02	\$ 0.12	\$ 9,221,151	1,304,661	\$ 461,058	0.05	\$ 0.35
1R132	1R132-GRANDMONT #1-GROUP A (8027A)	\$ 88,896,208	3,291,809	\$ 1,276,810	0.01	\$ 0.39	\$ 88,896,208	3,291,809	\$ 4,444,810	0.05	\$ 1.35
1R133	1R133-SCHOOLCRAFT-I96 DIST8-GROUP A (8202A)	\$ 14,017,362	1,671,566	\$ 262,020	0.02	\$ 0.16	\$ 14,017,362	1,671,566	\$ 700,868	0.05	\$ 0.42
1R134	1R134-GRANDMONT-GROUP A (9028A)	\$ 139,078,101	6,603,332	\$ 1,186,323	0.01	\$ 0.18	\$ 139,078,101	6,603,332	\$ 6,953,905	0.05	\$ 1.05
1R135	1R135-GREENFIELD-GRANDRIVER-GROUP A (9029A)	\$ 77,398,101	4,226,595	\$ 1,161,901	0.02	\$ 0.27	\$ 77,398,101	4,226,595	\$ 3,869,905	0.05	\$ 0.92
1R136	1R136-SCHOOLCRAFT-I96 DIST9-GROUP B (9031B)	\$ 95,253,691	6,026,266	\$ 1,389,410	0.01	\$ 0.23	\$ 95,253,691	6,026,266	\$ 4,762,685	0.05	\$ 0.79
1R137	1R137-CADILLAC COMMUNITY-GROUP A (9030A)	\$ 28,470,912	4,681,398	\$ 883,681	0.03	\$ 0.19	\$ 28,470,912	4,681,398	\$ 1,423,546	0.05	\$ 0.30

2R201	2R201-GREENFIELD-GROUP A (9032A)	\$	184,422,199	14,124,093	\$	2,471,881	0.01	\$	0.18	\$	184,422,199	14,124,093	\$	9,221,110	0.05	\$	0.65
2R202	2R202-GREENFIELD-GROUP B (9032B)	\$	61,005,841	3,880,236	\$	824,326	0.01	\$	0.21	\$	61,005,841	3,880,236	\$	3,050,292	0.05	\$	0.79
2R203	2R203-SCHAEFER-TRI-POINT-GREENWICH (0033A)	\$	345,199,385	15,688,287	\$	2,920,279	0.01	\$	0.19	\$	345,199,385	15,688,287	\$	17,259,969	0.05	\$	1.10
2R204	2R204-SCHULZE-GROUP D (0040D)	\$	37,403,937	2,051,938	\$	405,587	0.01	\$	0.20	\$	37,403,937	2,051,938	\$	1,870,197	0.05	\$	0.91
2R205	2R205-PEMBROKE-GROUP A (0039A)	\$	125,440,009	10,781,672	\$	1,300,994	0.01	\$	0.12	\$	125,440,009	10,781,672	\$	6,272,000	0.05	\$	0.58
2R206	2R206-PEMBROKE-GROUP F (0039F)	\$	12,491,094	573,294	\$	167,982	0.01	\$	0.29	\$	12,491,094	573,294	\$	624,555	0.05	\$	1.09
2R207	2R207-PEMBROKE-GROUP C (0039C)	\$	28,427,332	2,066,093	\$	256,439	0.01	\$	0.12	\$	28,427,332	2,066,093	\$	1,421,367	0.05	\$	0.69
2R208	2R208-GREEN ACRES-GROUP A (0044A)	\$	166,157,449	3,438,536	\$	6,877,072	0.04	\$	2.00	\$	166,157,449	3,438,536	\$	8,307,872	0.05	\$	2.42
2R209	2R209-SHERWOOD FOREST-GROUP A (0045A)	\$	135,943,472	2,592,489	\$	3,888,797	0.03	\$	1.50	\$	135,943,472	2,592,489	\$	6,797,174	0.05	\$	2.62
2R210	2R210-PALMER WOODS-GROUP A (0046A)	\$	108,512,219	3,097,758	\$	4,646,673	0.04	\$	1.50	\$	108,512,219	3,097,758	\$	5,425,611	0.05	\$	1.75
2R211	2R211-PENROSE-GROUP A (1048A)	\$	5,129,166	1,076,370	\$	127,832	0.02	\$	0.12	\$	5,129,166	1,076,370	\$	256,458	0.05	\$	0.24
2R212	2R212-COLLEGE PARK-GROUP A (9034A)	\$	199,750,402	13,430,549	\$	2,427,029	0.01	\$	0.18	\$	199,750,402	13,430,549	\$	9,987,520	0.05	\$	0.74
2R213	2R213-WINSHIP-GROUP A (9035A)	\$	233,248,405	11,912,883	\$	2,974,103	0.01	\$	0.25	\$	233,248,405	11,912,883	\$	11,662,420	0.05	\$	0.98
2R214	2R214-SCHULZE - BAGLEY A.B.(0040A)	\$	880,057,972	28,733,507	\$	6,286,168	0.01	\$	0.22	\$	880,057,972	28,733,507	\$	44,002,899	0.05	\$	1.53
2R215	2R215-UNIVERSITY DISTRICT-GROUP A (0049A)	\$	290,327,240	5,289,781	\$	10,579,562	0.04	\$	2.00	\$	290,327,240	5,289,781	\$	14,516,362	0.05	\$	2.74
2R216	2R216-DETROIT GOLF-GROUP A (0050A)	\$	60,781,036	1,888,863	\$	2,849,068	0.05	\$	1.51	\$	60,781,036	1,888,863	\$	3,039,052	0.05	\$	1.61
2R217	2R217-PALMER PARK-GROUP A (0051A)	\$	2,650,561	253,794	\$	153,584	0.06	\$	0.61	\$	2,650,561	253,794	\$	132,528	0.05	\$	0.52
2R218	2R218-GRIXDALE FARMS-GROUP A (1052A)	\$	34,845,907	3,792,796	\$	608,341	0.02	\$	0.16	\$	34,845,907	3,792,796	\$	1,742,295	0.05	\$	0.46
2R219	2R219-UNIVERSITY DISTRICT-GROUP B (0049B)	\$	15,514,711	605,287	\$	726,357	0.05	\$	1.20	\$	15,514,711	605,287	\$	775,736	0.05	\$	1.28
2R220	2R220-HARMONY VILLAGE-GROUP D (9042D)	\$	94,064,159	5,144,034	\$	1,202,504	0.01	\$	0.23	\$	94,064,159	5,144,034	\$	4,703,208	0.05	\$	0.91
2R221	2R221-FITZGERALD-GROUP A (0043A)	\$	149,092,713	7,655,022	\$	1,686,101	0.01	\$	0.22	\$	149,092,713	7,655,022	\$	7,454,636	0.05	\$	0.97
2R222	2R222-HARMONY VILLAGE GROUP A (9042A)	\$	120,172,633	7,395,802	\$	1,860,245	0.02	\$	0.25	\$	120,172,633	7,695,802	\$	6,008,632	0.05	\$	0.78
2R223	2R223-FITZGERALD GROUP C.D.(0043C)	\$	127,727,087	8,161,992	\$	1,888,768	0.01	\$	0.23	\$	127,727,087	8,161,992	\$	6,386,354	0.05	\$	0.78
2R224	2R224-HARMONY VILLAGE GROUP B.E. (9042B)	\$	69,705,926	6,247,070	\$	1,202,102	0.02	\$	0.19	\$	69,705,926	6,247,070	\$	3,485,296	0.05	\$	0.56
2R225	2R225-MARTIN - PILGRIM - DEXTER (0053A)	\$	187,737,557	11,254,972	\$	2,062,985	0.01	\$	0.18	\$	187,737,557	11,254,972	\$	9,386,878	0.05	\$	0.83
2R226	2R226-OAKMAN BLVD COMMUNITY-GROUP F (6199F)	\$	9,077,257	1,030,161	\$	331,222	0.04	\$	0.32	\$	9,077,257	1,030,161	\$	453,863	0.05	\$	0.44
2R227	2R227-OAKMAN BLVD COMMUNITY-GROUP E (6199E)	\$	17,008,244	890,049	\$	231,945	0.01	\$	0.26	\$	17,008,244	890,049	\$	850,412	0.05	\$	0.96
2R228	2R228-DEXTER-LINWOOD (6100A)	\$	17,088,529	1,354,090	\$	301,851	0.02	\$	0.22	\$	17,088,529	1,354,090	\$	854,426	0.05	\$	0.63
2R229	2R229-OAKMAN BLVD COMMUNITY-GROUP A (6199A)	\$	17,283,034	1,704,866	\$	372,160	0.02	\$	0.22	\$	17,283,034	1,704,866	\$	864,152	0.05	\$	0.51
2R230	2R230-DEXTER-LINWOOD (6100A)	\$	4,663,213	487,366	\$	107,966	0.02	\$	0.22	\$	4,663,213	487,366	\$	233,161	0.05	\$	0.48
3R301	3R301-NOLAN-GROUP A (1056A)	\$	19,049,978	3,662,460	\$	503,492	0.03	\$	0.14	\$	19,049,978	3,662,460	\$	952,499	0.05	\$	0.26
3R302	3R302-GRIXDALE FARMS-GROUP A (1052A)	\$	7,183,797	1,024,624	\$	127,032	0.02	\$	0.12	\$	7,183,797	1,024,624	\$	359,190	0.05	\$	0.35
3R303	3R303-NOLAN-GROUP B (1056B)	\$	135,026,924	16,794,428	\$	2,247,071	0.02	\$	0.13	\$	135,026,924	16,794,428	\$	6,751,346	0.05	\$	0.40
3R304	3R304-CADILLAC HEIGHTS-GROUP A (1060A)	\$	25,855,623	4,863,415	\$	736,675	0.03	\$	0.15	\$	25,855,623	4,863,415	\$	1,292,781	0.05	\$	0.27
3R305	3R305-NORTH CAMPAU-GROUP A (1061A)	\$	5,587,779	1,543,453	\$	217,307	0.04	\$	0.14	\$	5,587,779	1,543,453	\$	279,389	0.05	\$	0.18
3R306	3R306-CAMPAU/BANGLATOWN-GROUP A (1062A)	\$	43,226,932	3,399,761	\$	626,995	0.01	\$	0.18	\$	43,226,932	3,399,761	\$	2,161,347	0.05	\$	0.64
3R307	3R307-BUTLER - PERSHING (1036A)	\$	128,234,924	12,295,117	\$	2,032,758	0.02	\$	0.17	\$	128,234,924	12,295,117	\$	6,411,746	0.05	\$	0.52
3R308	3R308-NOLAN GROUP B (1056B)	\$	14,244,499	1,999,046	\$	264,491	0.02	\$	0.13	\$	14,244,499	1,999,046	\$	712,225	0.05	\$	0.36
3R309	3R309-DAVISON-GROUP A (1068A)	\$	18,847,147	3,184,202	\$	542,959	0.03	\$	0.17	\$	18,847,147	3,184,202	\$	942,357	0.05	\$	0.30
3R310	3R310-BUFFALO-GROUP A (1069A)	\$	101,951,770	6,295,353	\$	1,459,173	0.01	\$	0.23	\$	101,951,770	6,295,353	\$	5,097,589	0.05	\$	0.81
3R311	3R311-FARWELL-GROUP C (1065C)	\$	23,865,725	2,356,651	\$	320,227	0.01	\$	0.14	\$	23,865,725	2,356,651	\$	1,193,286	0.05	\$	0.51

3R312	3R312-FARWELL-GROUP A (1065A)	\$	49,445,025	7,056,641	\$	869,762	0.02	\$	0.12	\$	49,445,025	7,056,641	\$	2,472,251	0.05	\$	0.35
3R313	3R313-KRAINZ WOODS-GROUP A (1067A)	\$	40,331,452	5,564,891	\$	730,906	0.02	\$	0.13	\$	40,331,452	5,564,891	\$	2,016,573	0.05	\$	0.36
3R314	3R314-SHERWOOD A.B. (1071A)	\$	39,543,382	3,413,020	\$	577,621	0.01	\$	0.17	\$	39,543,382	3,413,020	\$	1,977,169	0.05	\$	0.58
3R315	3R315-NORTOWN-GROUP A (1072A)	\$	70,488,069	5,422,223	\$	898,255	0.01	\$	0.17	\$	70,488,069	5,422,223	\$	3,524,403	0.05	\$	0.65
3R316	3R316-GRANT-GROUP A (1070A)	\$	40,784,137	5,625,727	\$	863,339	0.02	\$	0.15	\$	40,784,137	5,625,727	\$	2,039,207	0.05	\$	0.36
3R317	3R317-AIRPORT SUB-GROUP C (1080C)	\$	9,720,319	2,137,331	\$	439,508	0.05	\$	0.21	\$	9,720,319	2,137,331	\$	486,016	0.05	\$	0.23
3R318	3R318-CONNER CREEK-GROUP A (2073A)	\$	8,163,763	798,922	\$	131,208	0.02	\$	0.16	\$	8,163,763	798,922	\$	408,188	0.05	\$	0.51
3R319	3R319-PULASKI-GROUP A (2047A)	\$	157,922,324	16,849,760	\$	2,829,119	0.02	\$	0.17	\$	157,922,324	16,849,760	\$	7,896,116	0.05	\$	0.47
3R320	3R320-MOUNT OLIVET (2076A)	\$	109,221,135	9,831,150	\$	1,765,253	0.02	\$	0.18	\$	109,221,135	9,831,150	\$	5,461,057	0.05	\$	0.56
3R321	3R321-VON STEUBEN-GROUP B (2077B)	\$	28,281,145	4,897,886	\$	835,347	0.03	\$	0.17	\$	28,281,145	4,897,886	\$	1,414,057	0.05	\$	0.29
3R322	3R322-MOHICAN REGENT-GROUP A (2075A)	\$	74,644,019	5,333,480	\$	1,095,568	0.01	\$	0.21	\$	74,644,019	5,333,480	\$	3,732,201	0.05	\$	0.70
3R323	3R323-REGENT PARK-GROUP A (2079A)	\$	122,983,608	9,866,392	\$	1,711,222	0.01	\$	0.17	\$	122,983,608	9,866,392	\$	6,149,180	0.05	\$	0.62
3R324	3R324-REGENT PARK-GROUP C (2079C)	\$	12,500,940	2,573,176	\$	368,481	0.03	\$	0.14	\$	12,500,940	2,573,176	\$	625,047	0.05	\$	0.24
3R325	3R325-REGENT PARK-GROUP B (2079B)	\$	32,387,540	4,856,916	\$	654,709	0.02	\$	0.13	\$	32,387,540	4,856,916	\$	1,619,377	0.05	\$	0.33
3R326	3R326-AIRPORT SUB-GROUP A (1080A)	\$	46,453,101	5,866,803	\$	1,169,177	0.03	\$	0.20	\$	46,453,101	5,866,803	\$	2,322,655	0.05	\$	0.40
4R401	4R401-LASALLE - GRATIOT (2081A)	\$	107,024,274	10,176,564	\$	1,771,171	0.02	\$	0.17	\$	107,024,274	10,176,564	\$	5,351,214	0.05	\$	0.53
4R402	4R402-MAPLERIDGE-GROUP A (2084A)	\$	31,034,236	5,990,282	\$	681,458	0.02	\$	0.11	\$	31,034,236	5,990,282	\$	1,551,712	0.05	\$	0.26
4R403	4R403-MAPLERIDGE-GROUP C (2084C)	\$	60,663,090	4,859,705	\$	985,433	0.02	\$	0.20	\$	60,663,090	4,859,705	\$	3,033,155	0.05	\$	0.62
4R404	4R404-MOROSS-MORANG-GROUP B (2085B)	\$	35,080,177	3,128,594	\$	475,805	0.01	\$	0.15	\$	35,080,177	3,128,594	\$	1,754,009	0.05	\$	0.56
4R405	4R405-MOROSS-MORANG-GROUP A (2085A)	\$	114,112,348	9,973,710	\$	1,787,216	0.02	\$	0.18	\$	114,112,348	9,973,710	\$	5,705,617	0.05	\$	0.57
4R406	4R406-DENBY - YORKSHIRE (2086A)	\$	118,863,225	9,073,764	\$	1,928,280	0.02	\$	0.21	\$	118,863,225	9,073,764	\$	5,943,161	0.05	\$	0.65
4R407	4R407-EDEN GARDENS-GROUP A (2083A)	\$	61,063,558	6,959,882	\$	1,090,108	0.02	\$	0.16	\$	61,063,558	6,959,882	\$	3,053,178	0.05	\$	0.44
4R408	4R408-OUTER DRIVE-HAYES-GROUP A (2088A)	\$	82,244,952	7,503,355	\$	1,239,770	0.02	\$	0.17	\$	82,244,952	7,503,355	\$	4,112,248	0.05	\$	0.55
4R409	4R409-YORKSHIRE WOODS-GROUP B (2087B)	\$	31,886,210	2,717,429	\$	409,833	0.01	\$	0.15	\$	31,886,210	2,717,429	\$	1,594,311	0.05	\$	0.59
4R410	4R410-CORNERSTONE VILLAGE-GROUP A (3098A)	\$	229,764,891	17,132,775	\$	2,866,429	0.01	\$	0.17	\$	229,764,891	17,132,775	\$	11,488,245	0.05	\$	0.67
4R411	4R411-OUTER - WADE (2088C)	\$	117,628,629	14,986,686	\$	2,280,257	0.02	\$	0.15	\$	117,628,629	14,986,686	\$	5,881,431	0.05	\$	0.39
4R412	4R412-CHANDLER PARK-GROUP A (3093A)	\$	40,553,370	5,085,754	\$	763,156	0.02	\$	0.15	\$	40,553,370	5,085,754	\$	2,027,669	0.05	\$	0.40
4R413	4R413-MORNINGSIDE-GROUP A (3096A)	\$	110,138,679	7,811,275	\$	1,729,291	0.02	\$	0.22	\$	110,138,679	7,811,275	\$	5,506,934	0.05	\$	0.70
4R414	4R414-EAST ENGLISH VILLAGE-GROUP B (3097B)	\$	93,271,501	4,189,790	\$	786,744	0.01	\$	0.19	\$	93,271,501	4,189,790	\$	4,663,575	0.05	\$	1.11
4R415	4R415-EAST ENGLISH VILLAGE-GROUP A (3097A)	\$	128,850,242	4,526,550	\$	811,887	0.01	\$	0.18	\$	128,850,242	4,526,550	\$	6,442,512	0.05	\$	1.42
4R416	4R416-FOX CREEK-GROUP A (3095A)	\$	24,150,373	4,083,647	\$	855,979	0.04	\$	0.21	\$	24,150,373	4,083,647	\$	1,207,519	0.05	\$	0.30
4R417	4R417-MORNINGSIDE-GROUP B (3096B)	\$	168,081,954	10,494,169	\$	2,238,530	0.01	\$	0.21	\$	168,081,954	10,494,169	\$	8,404,098	0.05	\$	0.80
4R418	4R418-FOX CREEK-GROUP B (3095B)	\$	30,410,923	3,705,332	\$	1,189,818	0.04	\$	0.32	\$	30,410,923	3,705,332	\$	1,520,546	0.05	\$	0.41
4R419	4R419-GRATIOT - EAST - MACK (3091A)	\$	50,897,147	7,095,542	\$	1,949,053	0.04	\$	0.27	\$	50,897,147	7,095,542	\$	2,544,857	0.05	\$	0.36
4R421	4R421-CONNER - JEFFERSON - MARINA GROUP (3092A)	\$	10,359,120	1,512,501	\$	364,685	0.04	\$	0.24	\$	10,359,120	1,512,501	\$	517,956	0.05	\$	0.34
4R422	4R422-JEFFERSON CHALMERS-GROUP A (3099A)	\$	106,123,204	6,993,306	\$	3,127,887	0.03	\$	0.45	\$	106,123,204	6,993,306	\$	5,306,160	0.05	\$	0.76
4R423	4R423-VICTORIA PARK (3100A)	\$	2,422,214	67,939	\$	135,909	0.06	\$	2.00	\$	2,422,214	67,939	\$	121,111	0.05	\$	1.78
5R501	5R501-DEXTER-LINWOOD (6100A)	\$	141,681,763	13,085,925	\$	2,795,304	0.02	\$	0.21	\$	141,681,763	13,085,925	\$	7,084,088	0.05	\$	0.54
5R502	5R502-PETOSKEY - JAMISON - H. KIEFER (6104A)	\$	117,217,310	11,391,060	\$	1,737,906	0.01	\$	0.15	\$	117,217,310	11,391,060	\$	5,860,866	0.05	\$	0.51
5R503	5R503-BOSTON EDISON-GROUP B (6102B)	\$	72,584,701	1,592,940	\$	3,185,880	0.04	\$	2.00	\$	72,584,701	1,592,940	\$	3,629,235	0.05	\$	2.28
5R504	5R504-BOSTON EDISON-GROUP A (6102A)	\$	119,013,386	2,434,693	\$	4,869,386	0.04	\$	2.00	\$	119,013,386	2,434,693	\$	5,950,669	0.05	\$	2.44

5R505	5R505-HISTORIC ATKINSON-GROUP B (6103B)	\$	17,052,753	320,518	\$	109,372	0.01	\$	0.34	\$	17,052,753	320,518	\$	852,638	0.05	\$	2.66
5R506	5R506-HERMAN KIEFER-GROUP E (6106E)	\$	32,133,609	906,408	\$	192,787	0.01	\$	0.21	\$	32,133,609	906,408	\$	1,606,680	0.05	\$	1.77
5R507	5R507-GATEWAY COMMUNITY-GROUP A (4101A)	\$	30,148,149	2,523,164	\$	439,165	0.01	\$	0.17	\$	30,148,149	2,523,164	\$	1,507,407	0.05	\$	0.60
5R508	5R508-GATEWAY COMMUNITY-GROUP B (4101B)	\$	42,106,387	1,148,255	\$	1,019,619	0.02	\$	0.89	\$	42,106,387	1,148,255	\$	2,105,319	0.05	\$	1.83
5R509	5R509-GATEWAY COMMUNITY-GROUP C (4101C)	\$	45,311,040	1,100,699	\$	1,283,452	0.03	\$	1.17	\$	45,311,040	1,100,699	\$	2,265,552	0.05	\$	2.06
5R510	5R510-HERMAN - LASALLE (6106A)	\$	36,293,333	2,500,752	\$	410,266	0.01	\$	0.16	\$	36,293,333	2,500,752	\$	1,814,667	0.05	\$	0.73
5R511	5R511-PIETY HILL-GROUP A (4107A)	\$	50,599,223	2,008,541	\$	1,807,697	0.04	\$	0.90	\$	50,599,223	2,008,541	\$	2,529,961	0.05	\$	1.26
5R512	5R512-NORTHEND NEIGHBORHOOD-GROUP A (4118A)	\$	48,811,747	2,017,979	\$	305,182	0.01	\$	0.15	\$	48,811,747	2,017,979	\$	2,440,587	0.05	\$	1.21
5R513	5R513-ARDEN PARK-GROUP A (4119A)	\$	33,041,284	1,030,575	\$	339,877	0.01	\$	0.33	\$	33,041,284	1,030,575	\$	1,652,064	0.05	\$	1.60
5R514	5R514-NORTH - MILWAUKEE - MEDBURY (4120A)	\$	120,724,982	4,665,367	\$	994,032	0.01	\$	0.21	\$	120,724,982	4,665,367	\$	6,036,249	0.05	\$	1.29
5R515	5R515-WEST VIRGINIA PARK-GROUP A (6110A)	\$	8,904,795	590,237	\$	590,237	0.07	\$	1.00	\$	8,904,795	590,237	\$	445,240	0.05	\$	0.75
5R516	5R516-VIRGINIA PARK (6114A)	\$	1,260,429	80,897	\$	11,272	0.01	\$	0.14	\$	1,260,429	80,897	\$	63,021	0.05	\$	0.78
5R517	5R517-HENRY FORD AC (5112A)	\$	25,180,899	886,823	\$	886,823	0.04	\$	1.00	\$	25,180,899	886,823	\$	1,259,045	0.05	\$	1.42
5R518	5R518-VIRGINIA PARK-GROUP A (4111A)	\$	16,667,074	399,059	\$	170,704	0.01	\$	0.43	\$	16,667,074	399,059	\$	833,354	0.05	\$	2.09
5R519	5R519-NEW CENTER COMMONS-GROUP A (4113A)	\$	14,331,402	286,601	\$	429,911	0.03	\$	1.50	\$	14,331,402	286,601	\$	716,570	0.05	\$	2.50
5R520	5R520-TECH TOWN-GROUP A (4117A)	\$	3,728,526	72,173	\$	27,651	0.01	\$	0.38	\$	3,728,526	72,173	\$	186,426	0.05	\$	2.58
5R521	5R521-NW GOLDBERG - ELIJAH (6115A)	\$	15,225,818	1,943,966	\$	400,770	0.03	\$	0.21	\$	15,225,818	1,943,966	\$	761,291	0.05	\$	0.39
5R522	5R522-CULTURAL CENTER-GROUP A (4124A)	\$	5,807,660	248,718	\$	61,052	0.01	\$	0.25	\$	5,807,660	248,718	\$	290,383	0.05	\$	1.17
5R523	5R523-POLETOWN EAST-GROUP A (4125A)	\$	45,916,256	4,916,658	\$	663,528	0.01	\$	0.13	\$	45,916,256	4,916,658	\$	2,295,813	0.05	\$	0.47
5R526	5R526-LAFAYETTE PARK-GROUP A (4136A)	\$	6,583,557	38,894	\$	94,106	0.01	\$	2.42	\$	6,583,557	38,894	\$	329,178	0.05	\$	8.46
5R528	5R528-GRATIOT - GRAND (3192A)	\$	82,159,216	6,579,327	\$	1,986,742	0.02	\$	0.30	\$	82,159,216	6,579,327	\$	4,107,961	0.05	\$	0.62
5R529	5R529-ISLANDVIEW A.B.(3141A)	\$	118,731,605	4,760,016	\$	4,760,017	0.04	\$	1.00	\$	118,731,605	4,760,016	\$	5,936,580	0.05	\$	1.25
5R530	5R530-WEST VILLAGE-GROUP A (3142A)	\$	77,259,473	1,184,423	\$	1,776,539	0.02	\$	1.50	\$	77,259,473	1,184,423	\$	3,862,974	0.05	\$	3.26
5R531	5R531-PINGREE PARK-GROUP A (3140A)	\$	36,334,836	2,498,349	\$	453,423	0.01	\$	0.18	\$	36,334,836	2,498,349	\$	1,816,742	0.05	\$	0.73
5R532	5R532-INDIAN VILLAGE-GROUP A (3143A)	\$	138,669,664	2,358,925	\$	4,717,850	0.03	\$	2.00	\$	138,669,664	2,358,925	\$	6,933,483	0.05	\$	2.94
5R533	5R533-GRATIOT - EAST - MACK (3091A)	\$	25,928,329	3,326,624	\$	896,310	0.03	\$	0.27	\$	25,928,329	3,326,624	\$	1,296,416	0.05	\$	0.39
5R534	5R534-GRATIOT - EAST - MACK (3091A)	\$	44,300,291	4,537,798	\$	1,297,556	0.03	\$	0.29	\$	44,300,291	4,537,798	\$	2,215,015	0.05	\$	0.49
5R535	5R535-JOSEPH BERRY SUB-GROUP A (3148A)	\$	27,396,446	746,250	\$	820,884	0.03	\$	1.10	\$	27,396,446	746,250	\$	1,369,822	0.05	\$	1.84
5R536	5R536-CONNER - JEFFERSON - MARINA GROUP (3092A)	\$	1,864,829	189,587	\$	33,154	0.02	\$	0.17	\$	1,864,829	189,587	\$	93,241	0.05	\$	0.49
5R537	5R537-ELMWOOD PARK (3147A)						0.00	\$	-				\$	-			
5R538	5R538-MIDWEST GROUP A.D. (6152A)	\$	8,536,412	1,729,949	\$	238,657	0.03	\$	0.14	\$	8,536,412	1,729,949	\$	426,821	0.05	\$	0.25
5R539	5R539-AIRPORT SUB-GROUP A (1080A)	\$	11,644,319	1,298,373	\$	256,850	0.02	\$	0.20	\$	11,644,319	1,298,373	\$	582,216	0.05	\$	0.45
6R601	6R601-MIDWEST-GROUP C (6152C)	\$	30,166,131	4,112,136	\$	727,865	0.02	\$	0.18	\$	30,166,131	4,112,136	\$	1,508,307	0.05	\$	0.37
6R602	6R602-MIDWEST-GROUP B (6152B)	\$	36,782,105	6,395,539	\$	899,167	0.02	\$	0.14	\$	36,782,105	6,395,539	\$	1,839,105	0.05	\$	0.29
6R603	6R603-MIDWEST-GROUP A (6152A)	\$	44,767,586	7,711,586	\$	1,064,120	0.02	\$	0.14	\$	44,767,586	7,711,586	\$	2,238,379	0.05	\$	0.29
6R604	6R604-CLAYTOWN-GROUP B (5153B)	\$	139,154,716	9,740,932	\$	2,337,993	0.02	\$	0.24	\$	139,154,716	9,740,932	\$	6,957,736	0.05	\$	0.71
6R605	6R605-CLAYTOWN-GROUP A (5153A)	\$	108,864,372	7,402,233	\$	1,401,238	0.01	\$	0.19	\$	108,864,372	7,402,233	\$	5,443,219	0.05	\$	0.74
6R606	6R606-CHADSEY CONDON GROUP A (5155A)	\$	33,351,584	4,179,748	\$	456,788	0.01	\$	0.11	\$	33,351,584	4,179,748	\$	1,667,579	0.05	\$	0.40
6R607	6R607-CORE CITY - NORTH CORKTOWN (5156A)	\$	83,718,236	4,501,191	\$	1,030,647	0.01	\$	0.23	\$	83,718,236	4,501,191	\$	4,185,912	0.05	\$	0.93
6R608	6R608-WOODBRIDGE - JEFFRIES (6161A)	\$	105,111,961	1,609,220	\$	2,413,897	0.02	\$	1.50	\$	105,111,961	1,609,220	\$	5,255,598	0.05	\$	3.27
6R611	6R611-SPRINGWELLS-GROUP A (5157A)	\$	198,247,045	11,290,641	\$	2,827,720	0.01	\$	0.25	\$	198,247,045	11,290,641	\$	9,912,352	0.05	\$	0.88

6R612	6R612-MICH - MARTIN -SW (5154A)	\$	49,405,045	3,830,693	\$	426,413	0.01	\$	0.11	\$	49,405,045	3,830,693	\$	2,470,252	0.05	\$	0.64				
6R613	6R613-SOUTHWEST DETROIT-GROUP F (5158F)	\$	73,633,842	4,278,213	\$	615,194	0.01	\$	0.14	\$	73,633,842	4,278,213	\$	3,681,692	0.05	\$	0.86				
6R614	6R614-CORKTOWN-GROUP A (5166A)	\$	66,602,369	866,637	\$	2,166,638	0.03	\$	2.50	\$	66,602,369	866,637	\$	3,330,118	0.05	\$	3.84				
6R615	6R615-SOUTHWEST DETROIT-GROUP A (5158A)	\$	149,046,088	8,852,711	\$	1,854,222	0.01	\$	0.21	\$	149,046,088	8,852,711	\$	7,452,304	0.05	\$	0.84				
6R616	6R616-HUBBARD - MEXICANTOWN (5169A)	\$	41,426,958	1,748,194	\$	258,704	0.01	\$	0.15	\$	41,426,958	1,748,194	\$	2,071,348	0.05	\$	1.18				
6R617	6R617-WEST SIDE INDUSTRIAL-GROUP A (5168A)	\$	23,694,990	701,935	\$	129,776	0.01	\$	0.18	\$	23,694,990	701,935	\$	1,184,750	0.05	\$	1.69				
6R618	6R618-DELRAY- CARBON WORKS (5171A)	\$	24,214,179	2,489,996	\$	278,079	0.01	\$	0.11	\$	24,214,179	2,489,996	\$	1,210,709	0.05	\$	0.49				
6R619	6R619-OAKWOOD HEIGHTS-GROUP A (5173A)	\$	1,684,931	146,035	\$	22,070	0.01	\$	0.15	\$	1,684,931	146,035	\$	84,247	0.05	\$	0.58				
6R620	6R620-BOYNTON GROUP A.C.D (5174A)	\$	100,423,298	13,379,237	\$	897,632	0.01	\$	0.07	\$	100,423,298	13,379,237	\$	5,021,165	0.05	\$	0.38				
7R701	7R701-WEST OUTER DRIVE-GROUP A (7175A)	\$	57,862,044	3,539,901	\$	699,489	0.01	\$	0.20	\$	57,862,044	3,539,901	\$	2,893,102	0.05	\$	0.82				
7R702	7R702-FAR WEST DETROIT-GROUP A (7176A)	\$	90,866,068	6,193,268	\$	1,111,107	0.01	\$	0.18	\$	90,866,068	6,193,268	\$	4,543,303	0.05	\$	0.73				
7R703	7R703-WEATHERBY-GROUP A (7178A)	\$	32,416,114	3,439,346	\$	424,283	0.01	\$	0.12	\$	32,416,114	3,439,346	\$	1,620,806	0.05	\$	0.47				
7R704	7R704-FRANKLIN PARK-GROUP A (7180A)	\$	206,742,759	18,762,105	\$	2,603,905	0.01	\$	0.14	\$	206,742,759	18,762,105	\$	10,337,138	0.05	\$	0.55				
7R705	7R705-WARRENDALE-GROUP A (7183A)	\$	353,323,245	34,900,433	\$	5,088,929	0.01	\$	0.15	\$	353,323,245	34,900,433	\$	17,666,162	0.05	\$	0.51				
7R706	7R706-SOUTHFIELD PLYMOUTH-GROUP A (7179A)	\$	28,460,485	2,351,465	\$	364,806	0.01	\$	0.16	\$	28,460,485	2,351,465	\$	1,423,024	0.05	\$	0.61				
7R707	7R707-PLYMOUTH-I96-GROUP A (7181A)	\$	17,625,179	2,516,493	\$	297,335	0.02	\$	0.12	\$	17,625,179	2,516,493	\$	881,259	0.05	\$	0.35				
7R708	7R708-JOY COMMUNITY-GROUP A (7182A)	\$	79,484,809	8,593,811	\$	3,079,422	0.04	\$	0.36	\$	79,484,809	8,593,811	\$	3,974,240	0.05	\$	0.46				
7R709	7R709-WARREN AVE COMMUNITY-GROUP A (7185A)	\$	73,127,338	7,342,205	\$	1,068,532	0.01	\$	0.15	\$	73,127,338	7,342,205	\$	3,656,367	0.05	\$	0.50				
7R710	7R710-WARREN AVE COMMUNITY-GROUP B (7185B)	\$	94,868,544	7,947,571	\$	1,269,012	0.01	\$	0.16	\$	94,868,544	7,947,571	\$	4,743,427	0.05	\$	0.60				
7R711	7R711-PLYMOUTH-HUBBELL-GROUP A (7186A)	\$	86,212,400	6,848,157	\$	1,553,954	0.02	\$	0.23	\$	86,212,400	6,848,157	\$	4,310,620	0.05	\$	0.63				
7R712	7R712-WE CARE COMMUNITY-GROUP A (7189A)	\$	27,053,344	2,462,129	\$	667,168	0.02	\$	0.27	\$	27,053,344	2,462,129	\$	1,352,667	0.05	\$	0.55				
7R713	7R713-FISKHORN-GROUP A (7190A)	\$	52,979,474	4,002,335	\$	626,092	0.01	\$	0.16	\$	52,979,474	4,002,335	\$	2,648,974	0.05	\$	0.66				
7R714	7R714-HAPPY HOMES-GROUP B (7195B)	\$	3,080,889	517,240	\$	80,096	0.03	\$	0.15	\$	3,080,889	517,240	\$	154,044	0.05	\$	0.30				
7R715	7R715-HARMONY VILLAGE GROUP B.E. (9024B)	\$	26,141,782	3,308,627	\$	624,731	0.02	\$	0.19	\$	26,141,782	3,308,627	\$	1,307,089	0.05	\$	0.40				
7R716	7R716-NORTHWEST COMMUNITY-GROUP A (9196A)	\$	30,710,944	5,678,757	\$	776,001	0.03	\$	0.14	\$	30,710,944	5,678,757	\$	1,535,547	0.05	\$	0.27				
7R717	7R717-HAPPY HOMES-GROUP A (7195A)	\$	49,644,713	7,473,180	\$	728,098	0.01	\$	0.10	\$	49,644,713	7,473,180	\$	2,482,236	0.05	\$	0.33				
7R718	7R718-PAVEWAY - PRIDE - BARTON (7187A)	\$	95,462,835	12,892,736	\$	2,274,831	0.02	\$	0.18	\$	95,462,835	12,892,736	\$	4,773,142	0.05	\$	0.37				
7R719	7R719-AVIATION SUB-GROUP A (7192A)	\$	298,546,270	19,401,048	\$	4,448,940	0.01	\$	0.23	\$	298,546,270	19,401,048	\$	14,927,314	0.05	\$	0.77				
7R720	7R720-OAKMAN BLVD COMMUNITY-GROUP F (6199F)	\$	9,431,990	1,211,270	\$	215,907	0.02	\$	0.18	\$	9,431,990	1,211,270	\$	471,600	0.05	\$	0.39				
7R721	7R721-OAKMAN BLVD COMMUNITY-GROUP E (6199E)	\$	17,079,128	855,728	\$	220,734	0.01	\$	0.26	\$	17,079,128	855,728	\$	853,956	0.05	\$	1.00				
7R722	7R722-OAKMAN BLVD COMMUNITY-GROUP A (6199A)	\$	39,529,818	3,081,679	\$	699,790	0.02	\$	0.23	\$	39,529,818	3,081,679	\$	1,976,491	0.05	\$	0.64				
7R723	7R723-RUSSELL WOODS-GROUP A (6200A)	\$	78,416,830	3,924,663	\$	1,100,260	0.01	\$	0.28	\$	78,416,830	3,924,663	\$	3,920,842	0.05	\$	1.00				
7R724	7R724-NARDIN PARK AC (6201A)	\$	37,599,268	6,507,410	\$	973,168	0.03	\$	0.15	\$	37,599,268	6,507,410	\$	1,879,963	0.05	\$	0.29				
									\$	0.35										\$	0.87