



### help decide the future of your neighborhood!

visit [ewcplan.com/survey](http://ewcplan.com/survey)

text "EWC ADD ME" to 313-466-2046

The East Warren/Cadieux Neighborhood Framework Plan is a **plan of action** for guiding **growth** and **investment** in **Morningside, East English Village, and Cornerstone Village**. It is **co-crafted** by **neighborhood residents** and the **City of Detroit**.

## Planning **Focus Areas**

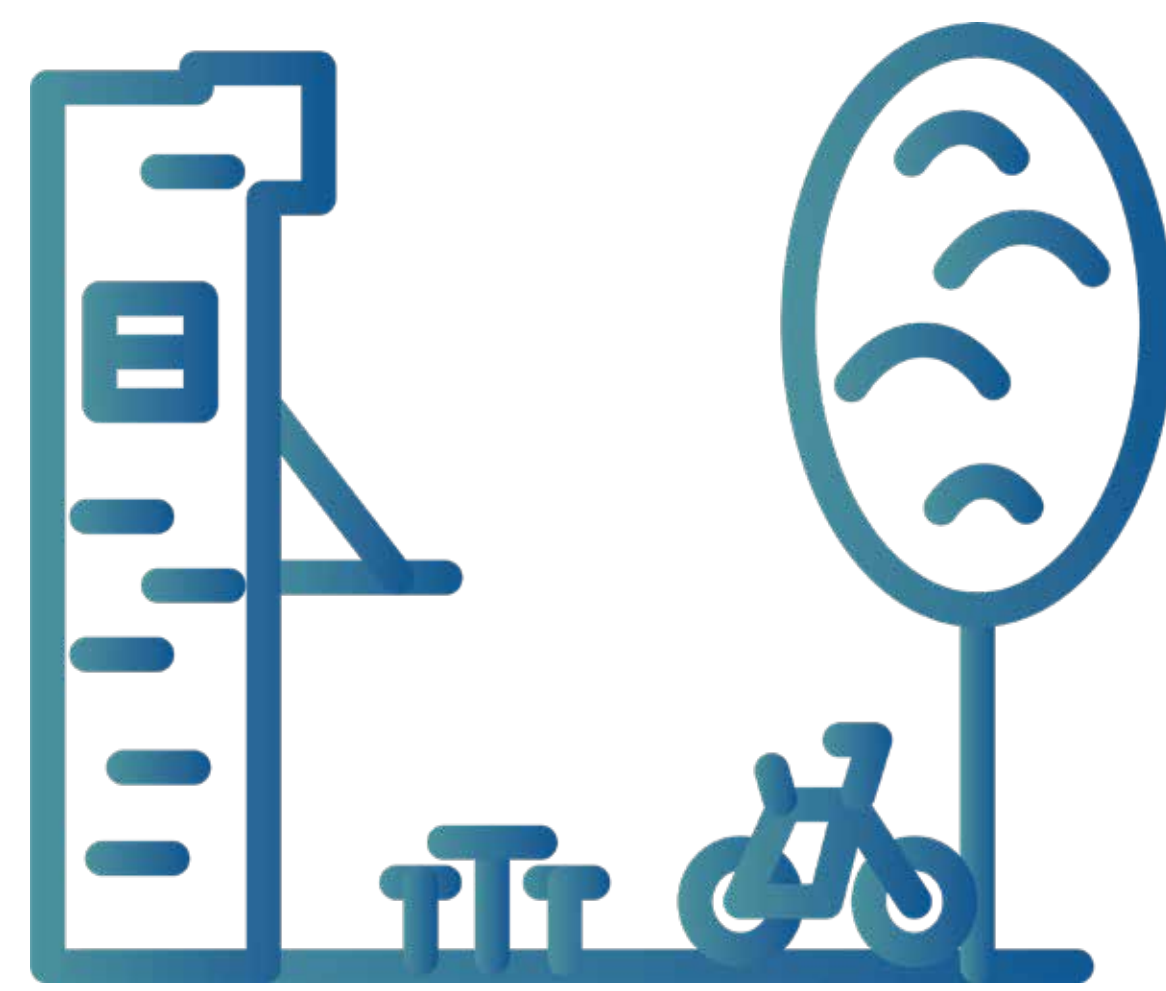
Strategies for each of the topics below will be developed as part of the E. Warren/Cadieux Neighborhood Plan.

### Neighborhood Stabilization



- Blight Reduction
- Home Rehabilitation

### Renovating East Warren



- Balance the needs of all street users
- Safe and comfortable sidewalks

### Commercial & Mixed-Use Development



- New shops and businesses
- Subsidized and market rate housing

### Improvements to Parks



- Investment in Balduck Park
- Other park amenities

In order to keep our community safe during the COVID-19 pandemic, we're bringing the information to you. Help improve the plan by completing the survey and sending us comments.

learn more at



[facebook.com/ewcplan](https://facebook.com/ewcplan)



[ewcplan.com](http://ewcplan.com)



# EAST WARREN / CADIEUX

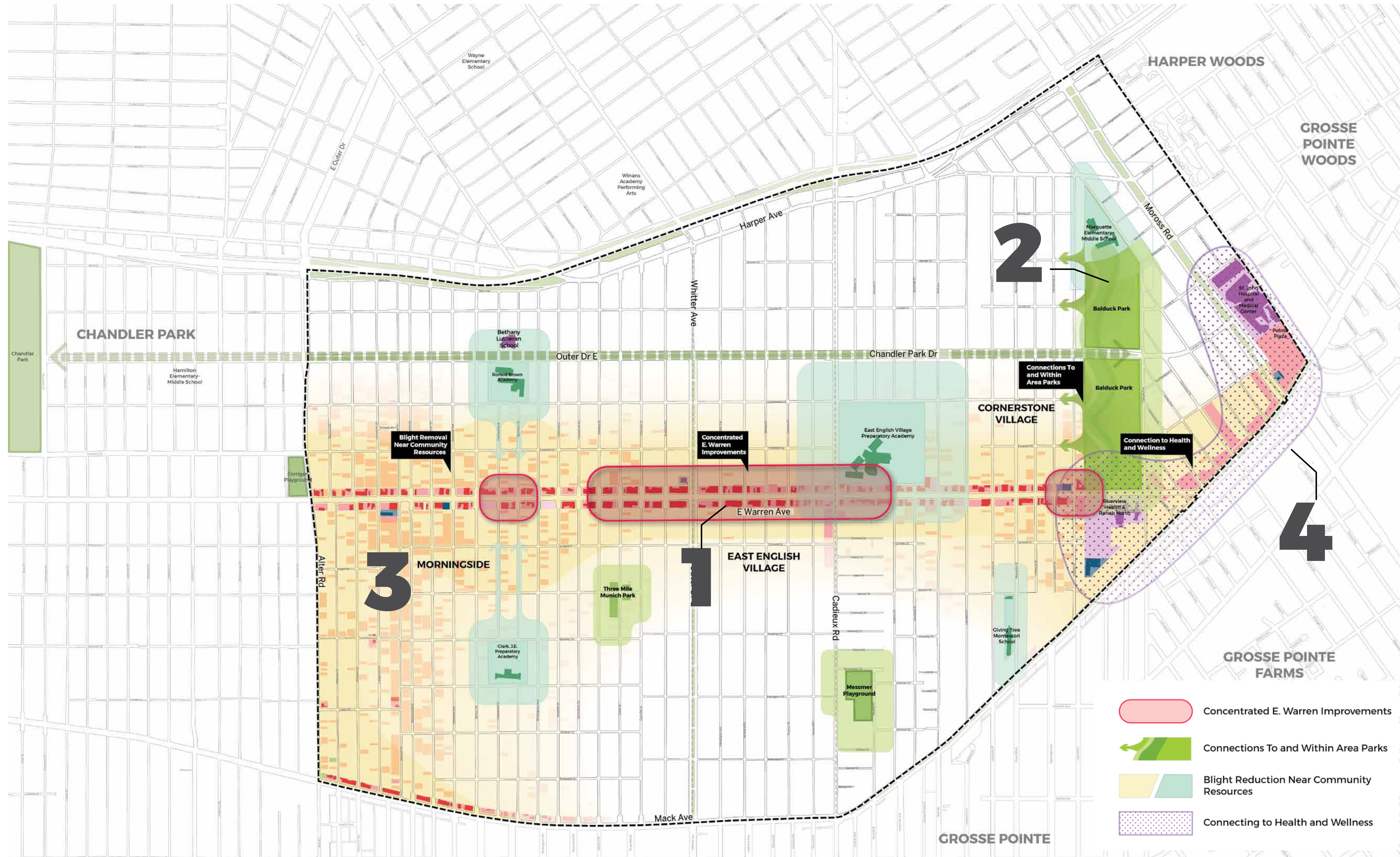
## NEIGHBORHOOD FRAMEWORK PLAN

### help decide the future of your neighborhood!

visit [ewcplan.com/survey](http://ewcplan.com/survey)

text "EWC ADD ME" to 313-466-2046

By combining **community input** and **professional analysis**, we have identified **specific locations** for **public investment**, to **maximize the benefit** to the **neighborhood**.



### 1. Concentrated E. Warren Improvements

Street renovations and commercial investment should be located together in the location that will best support new businesses.

### 2. Connections To and Within Area Parks

Adding new entry points and connecting Balduck and Chandler Parks will help deliver recreation benefits to the community.

### 3. Blight Reduction Near Community Resources

Blight reduction should be focused near E. Warren and around amenities like schools and libraries to maximize public investment.

### 4. Connecting to Health and Wellness

St. John Hospital can help attract healthcare and medical businesses to E. Warren and help activate the corridor.

In order to keep our community safe during the COVID-19 pandemic, we're bringing the information to you. Help improve the plan by completing the survey and sending us comments.

learn more at

[facebook.com/ewcplan](https://facebook.com/ewcplan)

[ewcplan.com](http://ewcplan.com)



# Help Decide the **Future of Your Neighborhood!**

In order to keep our community safe during the COVID-19 pandemic, we're bringing the information to you. Use the tools below to submit your thoughts about the plan so far.

## Take the **Survey**

### Online Survey



Point your **smartphone's camera** here to take our **survey** or at [ewcplan.com/survey](http://ewcplan.com/survey).



### Paper Survey



Fill out a **paper survey** and **leave** it in the **box**.

## Send Us **Comments**



Email comments to [info@ewcplan.com](mailto:info@ewcplan.com)



Send **text** comments to **313-466-2046**

learn more at



[facebook.com/ewcplan](https://facebook.com/ewcplan)



[ewcplan.com](http://ewcplan.com)

### tell us what you think!

[www.ewcplan.com/comments](http://www.ewcplan.com/comments)

[facebook.com/ewcplan](https://facebook.com/ewcplan)

[info@ewcplan.com](mailto:info@ewcplan.com)

text "EWC ADD ME" to 313-466-2046



# share your vision for balduck park!



visit [ewcplan.com/survey](https://ewcplan.com/survey)



text **“EWC ADD ME”** to **313-466-2046**



email [info@ewcplan.com](mailto:info@ewcplan.com)



visit [facebook.com/ewcplan](https://facebook.com/ewcplan)



# share your vision for east warren!



visit [ewcplan.com/survey](https://ewcplan.com/survey)



text **“EWC ADD ME”** to **313-466-2046**



email [info@ewcplan.com](mailto:info@ewcplan.com)



visit [facebook.com/ewcplan](https://facebook.com/ewcplan)



# share your vision for your block!



visit [ewcplan.com/survey](https://ewcplan.com/survey)



text **“EWC ADD ME”** to **313-466-2046**



email [info@ewcplan.com](mailto:info@ewcplan.com)



visit [facebook.com/ewcplan](https://facebook.com/ewcplan)



# what should this block look like in the future?



visit [ewcplan.com/survey](https://ewcplan.com/survey)



text “**EWC ADD ME**” to **313-466-2046**



email [info@ewcplan.com](mailto:info@ewcplan.com)



visit [facebook.com/ewcplan](https://facebook.com/ewcplan)

The East Warren/Cadieux Neighborhood Framework Plan is a **plan of action** for guiding **growth** and **investment** in **MorningSide, East English Village, and Cornerstone Village**. It is **co-crafted** by **neighborhood residents** and the **City of Detroit**.

Through the **first half of the Plan**, we have identified **specific locations** for **public investment**, to **maximize the benefit** to the **neighborhood**.

### 1. Coordinated E. Warren Improvements



Street renovations and business investment should be concentrated together in the area best suited for new retail.

### 2. Open and Connect the Area Parks



Adding access points and connecting Balduck and Chandler Parks will help deliver recreation benefits to the community.

### 3. Blight Reduction and Building on Community Assets



Blight reduction should be concentrated near E. Warren Ave. and around community assets to maximize public investment.

### 4. Connecting to Health and Wellness



Health and wellness are a key opportunity to build sustainability and resiliency into local businesses.

**tell us what you think!**

scan me to take the survey!



[www.ewcplan.com/comments](http://www.ewcplan.com/comments)

[facebook.com/ewcplan](https://facebook.com/ewcplan)

text "EWC ADD ME" to 313-466-2046