

## Notice of Public Outreach

The Virginia Park Road Reconstruction project is a curb-to-curb reconstruction of the historic 30-foot-wide road from The Lodge Freeway to Woodward Ave. The road itself is characterized by its original brick paver surface and stone curbs which will be replaced. Additional improvements of strategically target areas could include repair of worn concrete sidewalk and driveway approaches that front the street, replacement of several noncompliant ADA crosswalk ramps, new shade street trees, and minimal upgrades to existing site furnishings. The estimated construction cost for the project is \$5,278,100 with construction starting Summer 2025 to be completed Summer 2026.

## CITY OF DETROIT Notice of Public Outreach

You are invited to give input on the following proposal.

### PROPOSAL

#### Virginia Park Brick Road Reconstruction Project

### OUTREACH DETAILS

Community Meeting  
Tuesday, January 21, 2025, 6:00 p.m. - 8:00 p.m.  
Joseph Walker Williams Center  
8431 Rosa Parks Blvd., Detroit, MI 48206  
Join City Staff for a meeting at 6:00 p.m. Presentation starts at 6:15 p.m.

### ADMINISTRATIVE SUMMARY

The Virginia Park Road Reconstruction project is a curb-to-curb reconstruction of the historic 30-foot-wide road from The Lodge Freeway to Woodward Ave. The road itself is characterized by its original brick paver surface and stone curbs which will be replaced.

Additional improvements of strategically target areas could include repair of worn concrete sidewalk and driveway approaches that front the street, replacement of several noncompliant ADA crosswalk ramps, new shade street trees, and minimal upgrades to existing site furnishings.

The estimated construction cost for the project is \$5,278,100 with construction starting Summer 2025 to be completed Summer 2026.

### ONLINE FEEDBACK

Send feedback to:  
Jay Biernat, Project Manager, Department of Public Works  
biernatj@detroitmi.gov



With advance notice of seven calendar days, the City of Detroit will provide interpreter services at public meetings, including language translation and reasonable ADA accommodations. Please contact the Civil Rights, Inclusion and Opportunity Department at (313) 224-4950, through the TTY number 711, or email [crlo@detroitmi.gov](mailto:crlo@detroitmi.gov) to schedule these services.

# **Virginia Park Paver Road Reconstruction Project**

---

**January 21<sup>st</sup> 2025 – 6:00 pm**

**City of Detroit Department of Public Works**

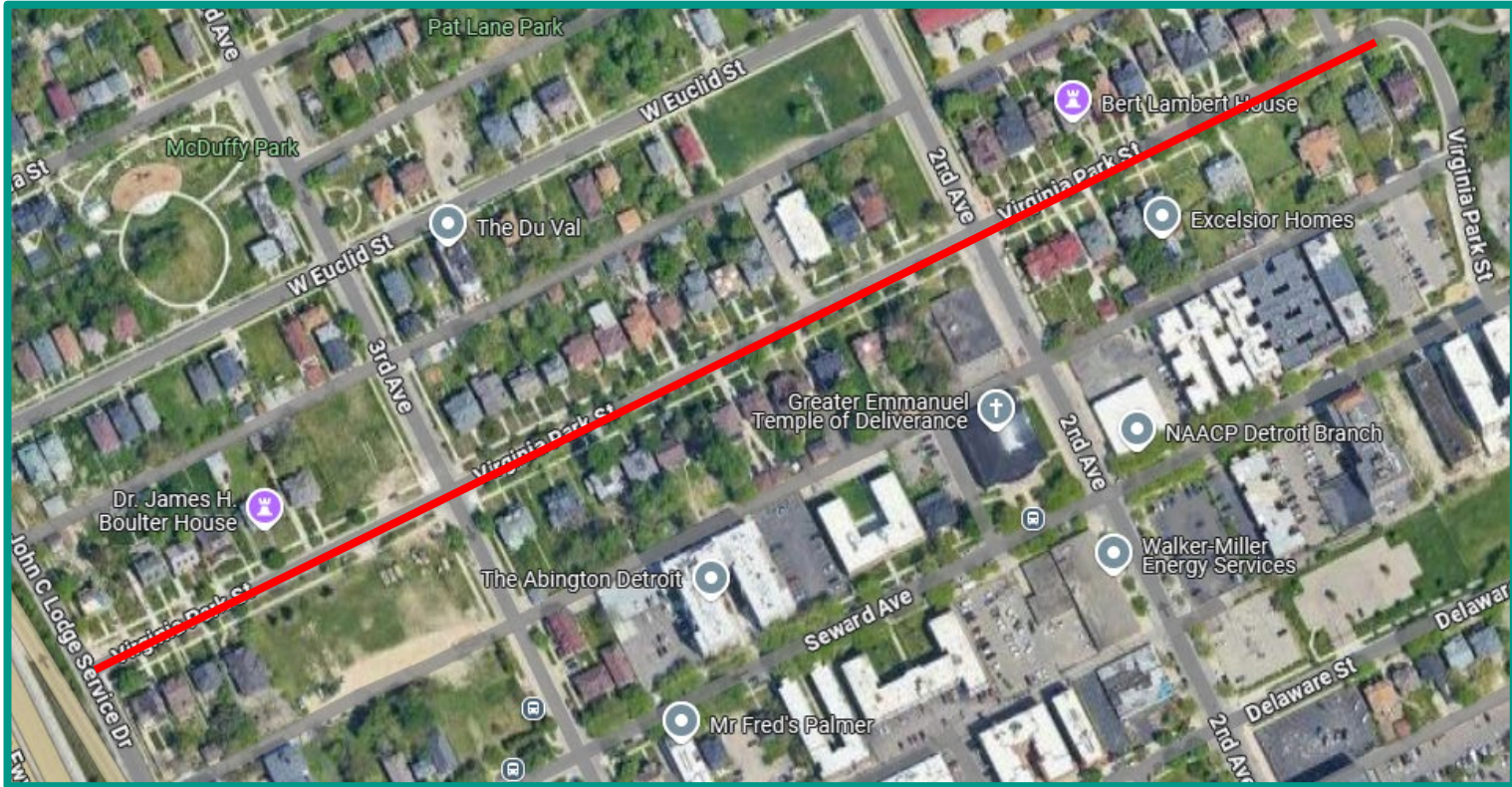
# Agenda

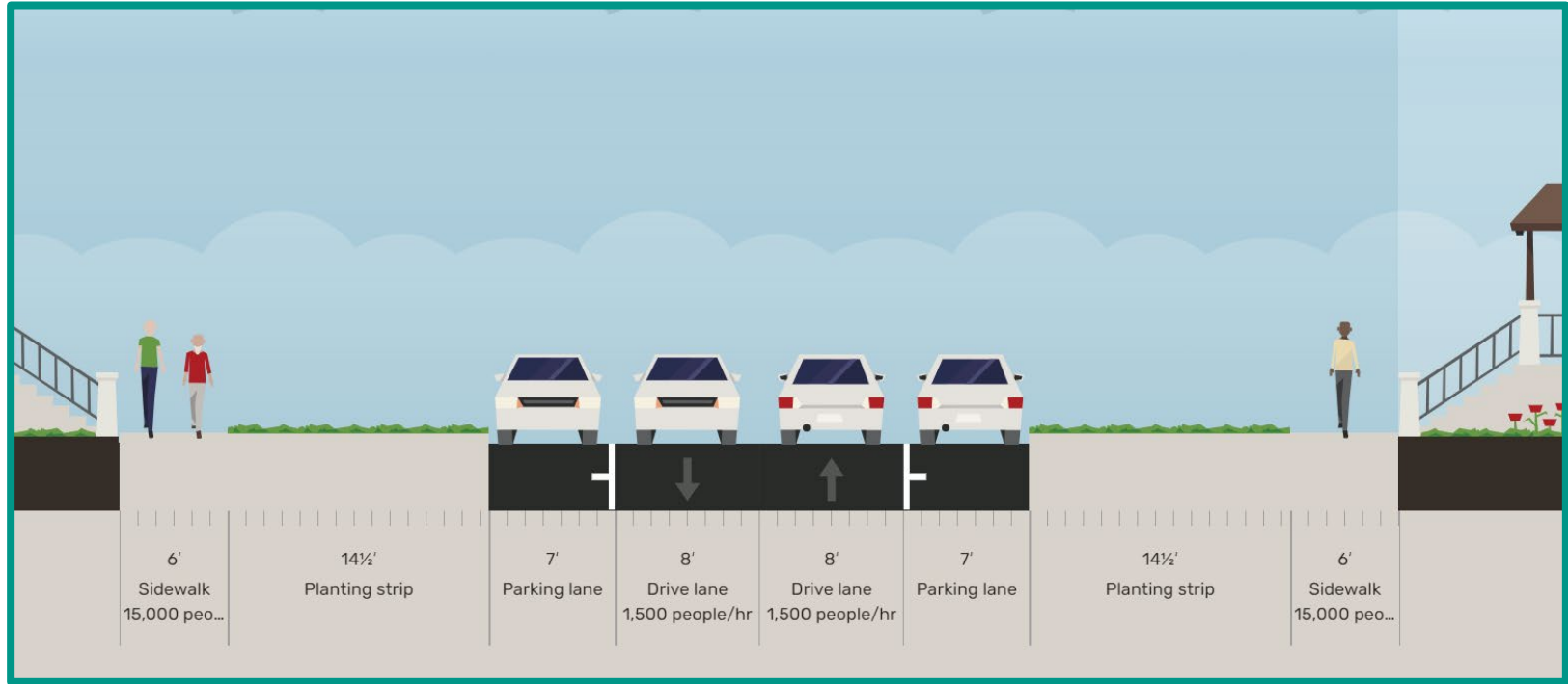
---

- Introductions
- Project Update
- Design Discussion
- Community Feedback



# Virginia Park M-10 to Woodward





# Virginia Park Road Configuration

30 Ft. paver right of way with sandstone curbs

# Project Update

---

- Design Update
  - Exploring historic references with Commission and will present to the larger committee for plan approval
  - Currently at 60% design
  - Materials discussion
    - Survey of stockpiled and on the ground materials complete
    - Currently sourcing pavers and sandstone curbs and analyzing quantities



# Project Scope

---

- The Reconstruction to include:
  - New and salvaged pavers
  - New and salvaged curbs
  - Possible tree spot replacement by contract or others
  - Driveway approach repair/replacement where needed



# Construction Considerations

---

- **Historic Preservation**
  - Replacing materials where they are from within tolerance
- **Michigan TAP (Transportation Alternatives Program) Grant**
- **Construction phasing to consider the needs of the community**
- **Design is being mindful to balance the history of the road**
- **Parking needs and coordination**



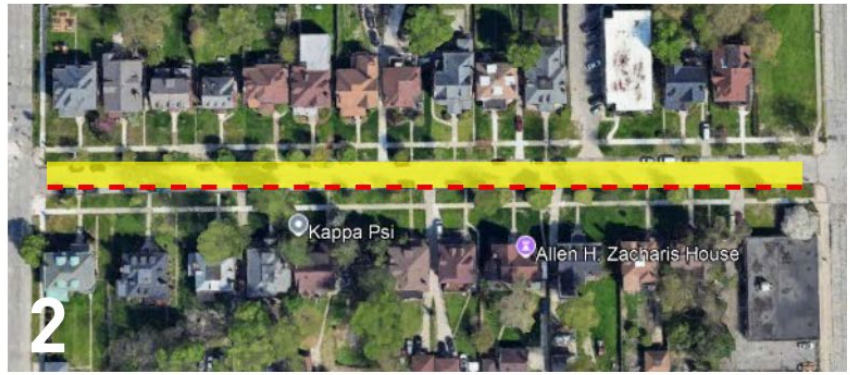




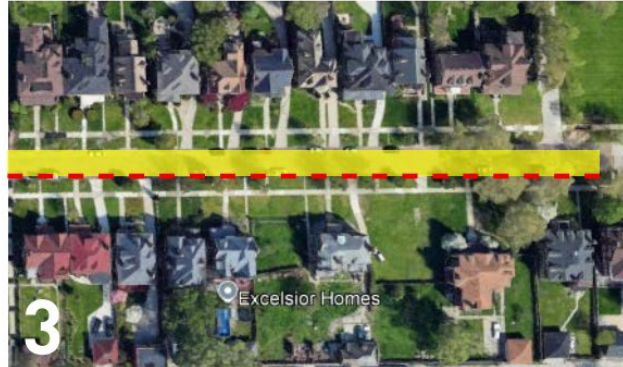
- **Paver rating strategy**
- **1-10 Scale**
- **Bricks below 5 aren't reused**



1  
EST. 16,000 SF OF BRICK  
EST. 560 LF OF CURB ON ONE SIDE



2  
EST. 28,000 SF OF BRICK  
EST. 800 LF OF CURB ON ONE SIDE



3  
EST. 18,000 SF OF BRICK  
EST. 650 LF OF CURB ON ONE SIDE

<b>TOTAL BRICK: 62,000 SF</b>	STONE CURB - GOOD CONDITION [>70%]	+/- 1,413 lf
<b>TOTAL CURB: 4,000 LF</b>	STONE CURB - MODERATE CONDITION [+/-50%]	+/- 1,439 lf
	STONE CURB - POOR CONDITION [<30%]	+/- 351 lf
80% = 49,600 SF, 3,200 LF	CONCRETE CURB	+/- 172 lf
50% = 31,000 SF, 2,000 LF	BRICK PAVERS - GOOD CONDITION	+/- 49,001 sf
20% = 12,400 SF, 800 LF	BRICK PAVERS - POOR CONDITION	+/- 12,901 sf
	PROVIDED BY SMITHGROUP	

## Survey Estimates

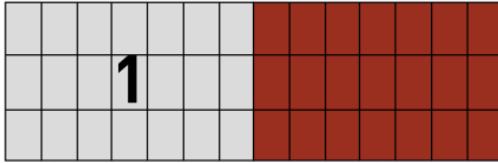


# DISCOVERIES

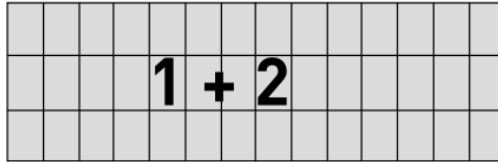
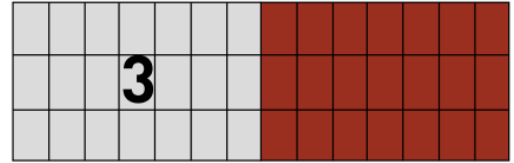
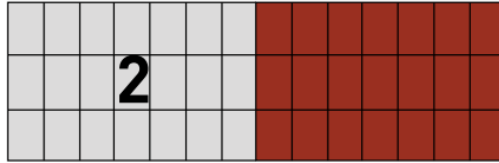


Width	Length	Depth
① 3 1/8"	① 9 1/4"	① 4"
② 3 1/4"	② 9"	② 4"
③ 3 5/8"	③ 8.5"	③ 4"

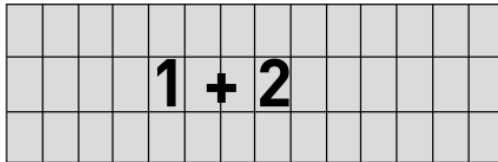
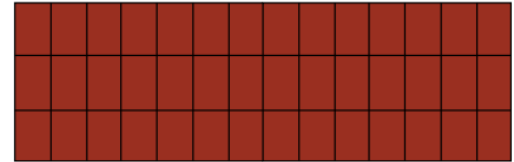
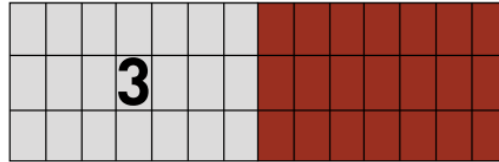
# WHAT WE CAN DO



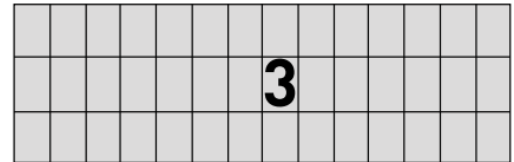
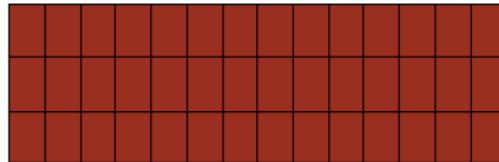
Old (bricks remain in same block) and New



Block 1 and 2, Block 3 and New, New



Block 1 and 2, New, Block 3



## Other Historic Stories

- Community decided to not commemorate tank tracks from 1967 in build.
- Have reached out to historical society to coordinate possible exhibit with materials



# Next Steps

---

- Currently figuring out what replacement pavers to use:
  - Reclaimed, New, Stockpiled.
- 90% design delivered
- Final design/materials to be approved by Historic Commission
- Construction will begin in Summer of 2025



# Let's connect!

**Christina Peltier**

*Deputy Director , Complete Streets*

[peltierc@detroitmi.gov](mailto:peltierc@detroitmi.gov)

**Dolin Diaz**

*Planner, Complete Streets*

[dolin.diaz@detroitmi.gov](mailto:dolin.diaz@detroitmi.gov)



**TAKE PART**  
**Opportunity Rising**

