

COO Public Meeting Dec. 4

OUTREACH DETAILS

Wednesday, December 4, 2024

5:00 - 7:00 p.m.

The Gaelic League of Detroit -

2068 Michigan Ave., Detroit, MI, 48216

ADMINISTRATIVE SUMMARY

The City of Detroit Department of Public Works is making improvements to Michigan Avenue between Cass and Woodward. The streetscape could include lighting, sidewalk improvements, traffic calming, utility work, landscaping, signage, pavement markings and site furnishings. The total estimated design and construction costs of this project are \$6.6 million. DPW anticipates construction to begin in the Winter of 2026 and to be completed in the Fall of 2026.

Please join City staff to discuss options for the roadway between Cass Avenue and Woodward.

The meeting will be held in partnership with MDOT and its roadway segment.

CITY OF DETROIT

Notice of Public Outreach

You are invited to give input on the following proposal.

PROPOSAL

**Michigan Ave. Streetscape
Cass to Woodward**

OUTREACH DETAILS

Community Meeting
Wednesday, December 4, 2024
5:00 pm - 7:00 pm
The Gaelic League of Detroit
2068 Michigan Ave, Detroit, MI 48216

ADMINISTRATIVE SUMMARY

The City of Detroit Department of Public Works is making improvements to Michigan Avenue between Cass and Woodward. The streetscape could include lighting, sidewalk improvements, traffic calming, utility work, landscaping, signage, pavement markings and site furnishings. The total estimated design and construction costs of this project is \$6.6 million. DPW anticipates construction to begin in Winter 2026 and to be completed in Fall 2026.

Please join City staff to discuss options for the roadway between Cass Avenue and Woodward.

ONLINE FEEDBACK

Send feedback to:
Jay Biernat, Project Manager, Department of Public Works
biernatj@detroitmi.gov



With advance notice of seven calendar days, the City of Detroit will provide interpreter services at public meetings, including language translation and reasonable ADA accommodations. Please contact the Civil Rights, Inclusion and Opportunity Department at (313) 224-4950, through the TTY number 711, or email crio@detroitmi.gov to schedule these services.

② Early Concepts

GRISWOLD INTERSECTION EXISTING

- Four (4) lanes on Michigan Avenue
- Large intersection at Griswold with long pedestrian crossings
- Parallel on-street parking throughout
- Two-way traffic on Lafayette
- One-way traffic on Shelby



2 Early Concepts

GRISWOLD INTERSECTION CONCEPT #1

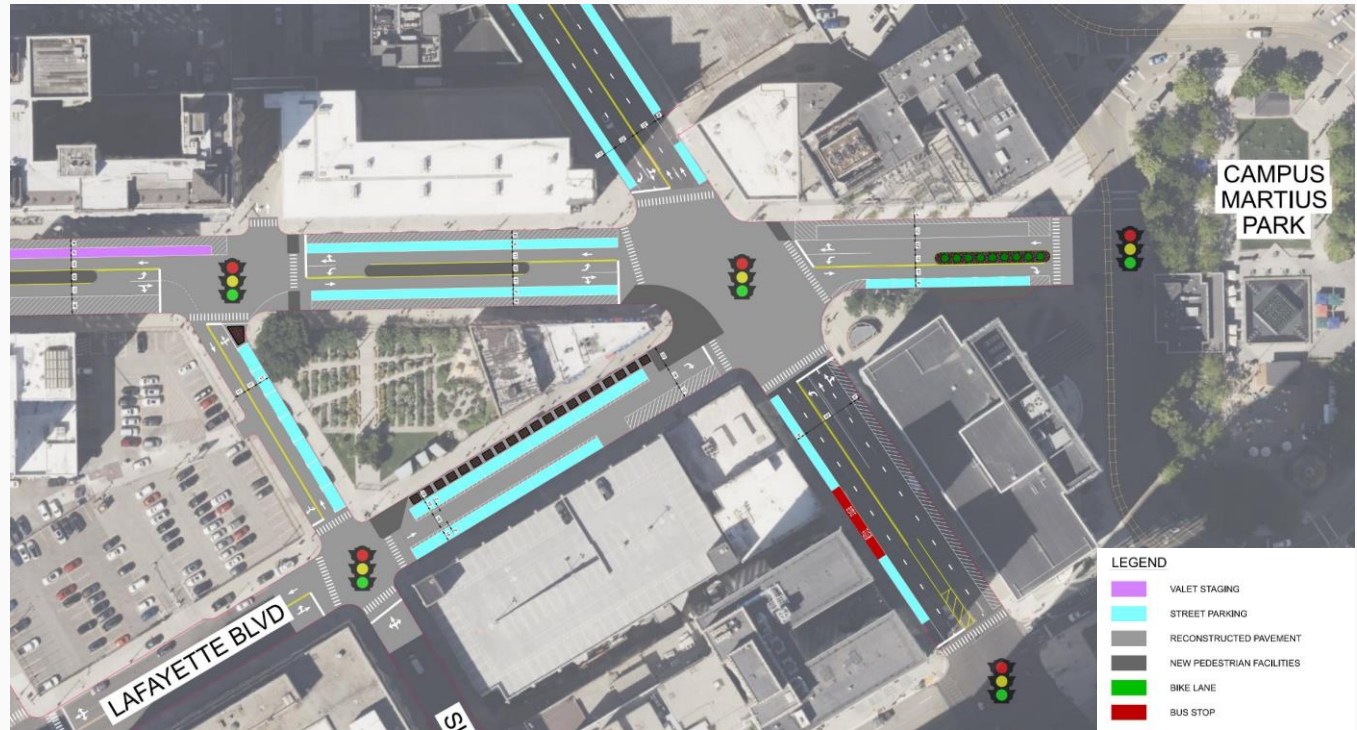
- Four (4) lanes on Michigan Avenue
- Modified intersection at Griswold with shorter pedestrian crossings
- Space for amenities and landscaping
- Parallel on-street parking throughout
- One-way traffic on Lafayette
- Two-way traffic on Shelby



2 Early Concepts

GRISWOLD INTERSECTION CONCEPT #2

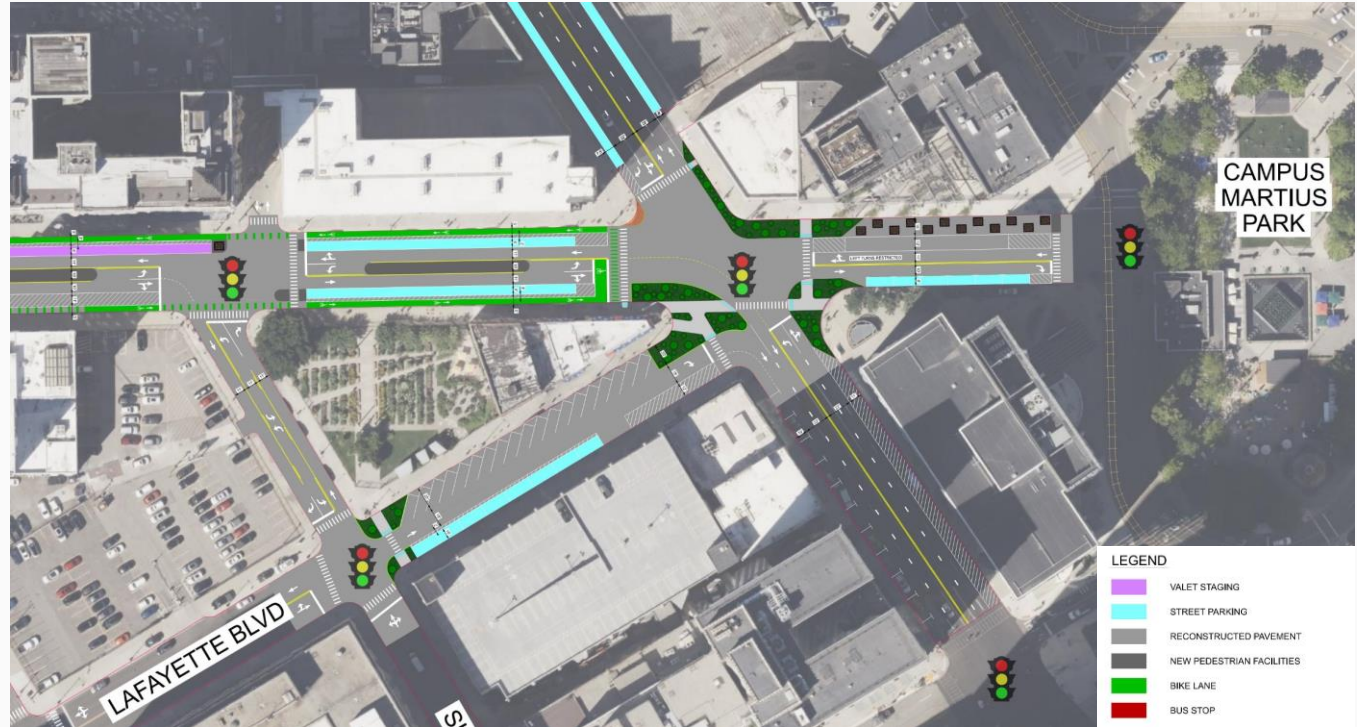
- Three (3) lanes on Michigan Avenue
- Modified intersection at Griswold with shorter pedestrian crossings
- Space for amenities and landscaping
- Parallel on-street parking throughout
- One-way traffic on Lafayette
- Two-way traffic on Shelby



2 Early Concepts

GRISWOLD INTERSECTION CONCEPT #3

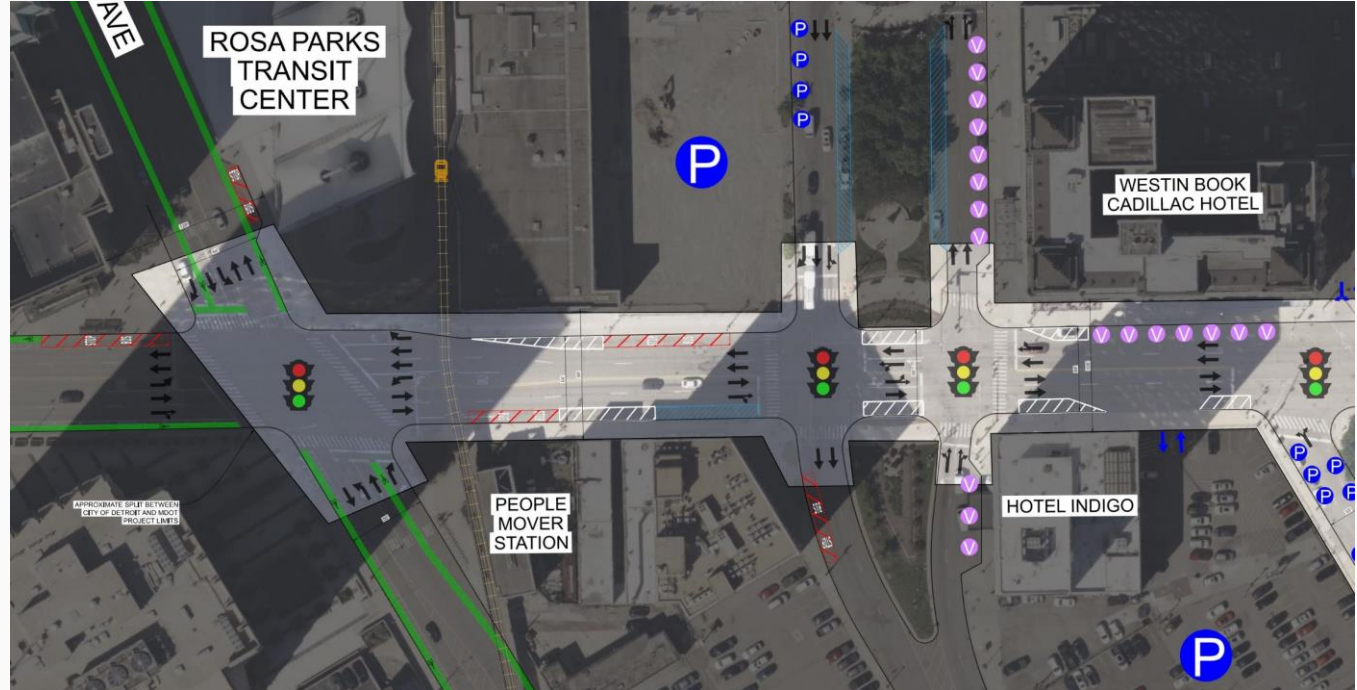
- Three (3) lanes on Michigan Avenue
- Protected intersection at Griswold with shortest pedestrian crossings
- Rain gardens introduced to add landscape features and manage stormwater
- Angled parking on Lafayette, parallel on-street parking throughout
- Bike lanes extend to Griswold
- One-way traffic on Lafayette
- Two-way traffic on Shelby



2 Early Concepts

CASS > WASHINGTON EXISTING

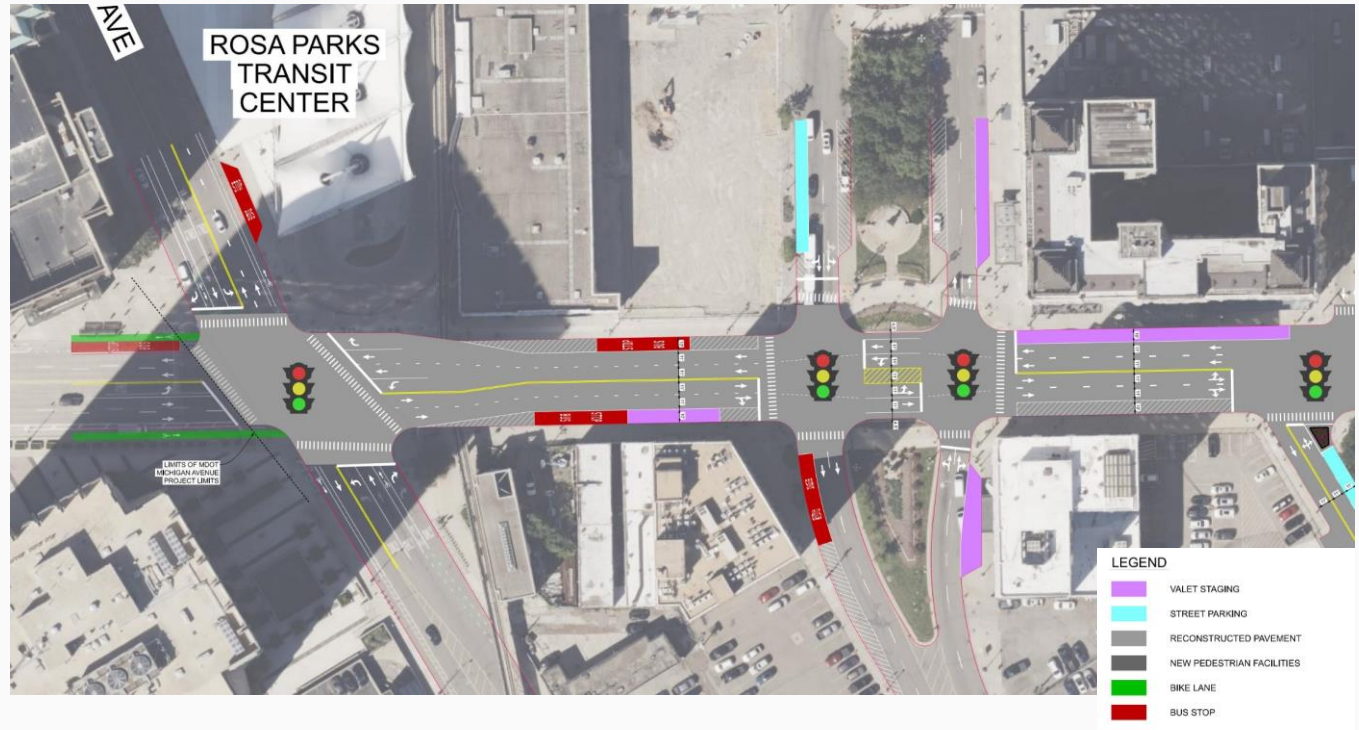
- Four (4) lanes on Michigan Avenue
- Valet staging on Michigan and Washington
- Large intersection at Cass with long pedestrian crossings
- Challenging operations/left-turns at Washington
- Heavy bus traffic on Michigan Avenue and at RPTC



2 Early Concepts

CASS > WASHINGTON CONCEPT #1

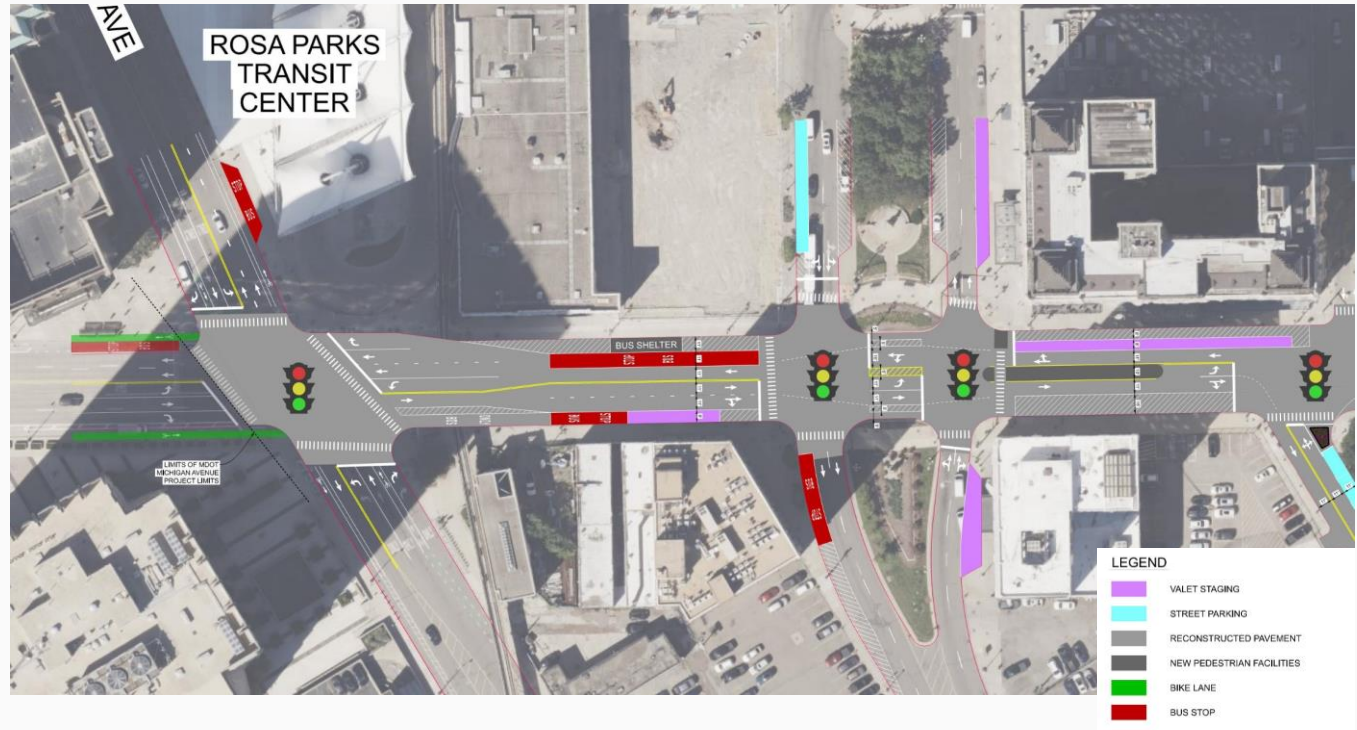
- Four (4) lanes on Michigan Avenue
- Modified intersections with shorter pedestrian crossings
- All valet staging and on-street parking maintained
- Additional space for buses at Washington and at stop locations



2 Early Concepts

CASS > WASHINGTON CONCEPT #2

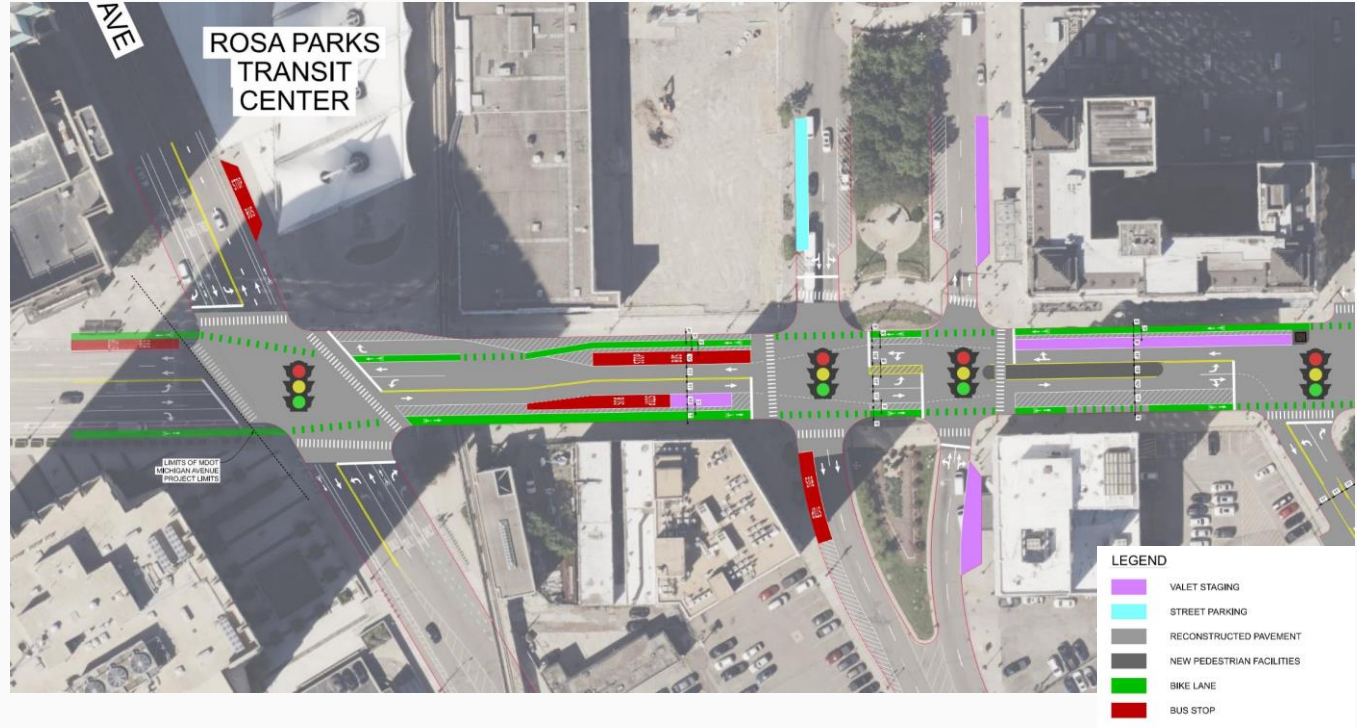
- Three (3) lanes on Michigan Avenue
- Transition from four (4) to three (3) lanes at Washington
- Modified intersections with shorter pedestrian crossings
- All valet staging and on-street parking maintained
- Additional space for buses at Washington and at stop locations



2 Early Concepts

CASS > WASHINGTON CONCEPT #3

- Three (3) lanes on Michigan Avenue
- Transition from four (4) to three (3) lanes at Washington
- Modified intersections with shorter pedestrian crossings
- All valet staging and on-street parking maintained
- Additional space for buses at Washington and at stop locations
- Bike lanes extend to Griswold



② Your Needs

THESE CONCEPTS ATTEMPT TO...

- Make Michigan Avenue safer for people driving, walking, and biking
- Avoid impacts to your parking, deliveries, valet, and access
- Create spaces for landscaping, amenities, and other elements to beautify Michigan Avenue
- Create a smooth transition from the MDOT segment

BUT...

- What did we miss? What should we consider moving forward?
- What is most important to your businesses, properties, etc.?
- What would you like to see on Michigan Avenue that doesn't exist today?

3 Next Steps

	2024								2025									
	MAY	JUN	JUL	AUG	SEP	OCT	NOV	DEC	JAN	FEB	MAR	APR	MAY	JUN	JUL	AUG	SEP	OCT
Data Collection																		
Design Concept Development																		
Final Design																		
Stakeholder Engagement																		

- Continue stakeholder engagement to refine concepts
- Continue coordination with MDOT to ensure smooth transition at Cass Avenue
- Begin final design process in early 2025
- Continue coordination with MDOT on possible joint construction for a more efficient and less disruptive project